

# W B B M

**World's Best Broadcast Medium**

226 METERS

1500 WATTS CLASS B

**CHICAGO**

**U. S. A.**

Wishes to thank you for your report on our Broadcast  
We are on the following afternoon and evening schedule:

Mon.	Tues.	Wed.	Thurs.	Fri.	Sat.	Sun.
4 - 6	4 - 6	4 - 6	4 - 6	4 - 6	4 - 6	12:30 - 2
6 - 7	8 - 12	8 - 10	8 - 12	8 - 10	8 - 2:30	*4 - 6
		12 - 2:30				8 - 10
						*12 - 3

Time is Central Standard Time

\*Featuring Sunday Afternoon Tea Dance and Sunday Night "Nut Club"

We are always glad to hear from you and to fill your requests.

335



523

THIS SIDE OF CARD IS FOR ADDRESS

David F. Thomas,  
Proctorville, Ohio.

# W B C N

CHICAGO

730 W. 65<sup>th</sup> ST.  
Phone - ENGLEwood 1400

RADIOCAST STATION of the  
**Southtown Economist**

"WORLD'S BEST COMMUNITY NEWSPAPER"

FOSTER & McDONNELL - Publishers

SCHEDULE: CENTRAL STANDARD TIME

Sunday—

10:30 to 12:15, Church Services  
4:00 to 5:00, Organ and Vocal Recital  
7:00 to 8:00, Classical Concert  
8:00 to 10:00, Popular Concert

Monday—(Silent Night)

6:00 to 7:00, Juvenile

Tuesday, Thursday and Saturday—

6:00 to 7:00, Juvenile  
7:00 to 8:00, Classical Concert  
8:00 to 12:00, Popular Concert and  
Talks and Stories  
12:00 to 1:00, Pirate Ship Club

Wednesday and  
Friday—

6:00 to 7:00,  
Juvenile  
7:00 to 10:00,  
Classical and  
Popular Con-  
certs

We are pleased to verify reception of our programs as you state  
in your communication of Dec. 7<sup>th</sup>.

Please do not hesitate to comment, criticise or suggest. It is our  
aim to entertain you, and we are glad to do anything possible to at-  
tain that end.

Requests will be noted and complied with wherever possible.

Wave Length 266 Meters (1,128 Kilo-  
cycles). Class B. Power, 500 Watts.

R3-F&M

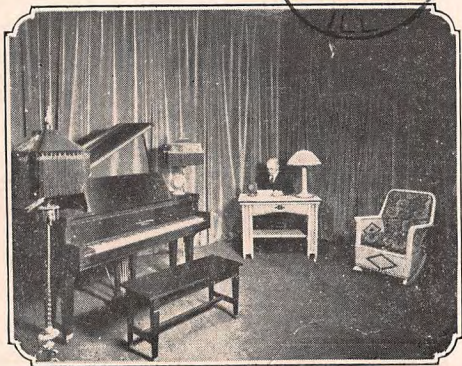
Per *James M. C. Donnell*  
WBCN

169.

169

CHICAGO  
DEC 1  
8 PM  
1924  
POST CARD

7



A Corner of the WBCN Studio at the Southtown Economist Radiocast Station

David F. Thomas,  
Proctorville, Ohio



"Iron Knuckle" Dougherty, first mate, dangerously near losing his head. However, Capt. "Bloody Bill" McDonnell (at extreme right), relents, due to the pleading of the Princesses Kazooza Hoyt and Goo Goo Downs. "Terrible Terry" Yagle is the figure about to wield the cutlass as per the Skipper's orders.

**This Is to Certify That**

*David F. Thomas*

having been duly shanghaied,

**Has Been Officially Appointed**

*Rum Runner*

of the

# PIRATE CREW of WPCN

Southtown Economist Station 500 WATTS  
266 METERS

Signature of Pirate

*Bloody Bill McDonnell*

Captain

*Iron Knuckle Dougherty*

First Mate

*Terrible Terry Yagle*

Second Mate

*Shoony Gus Foster*

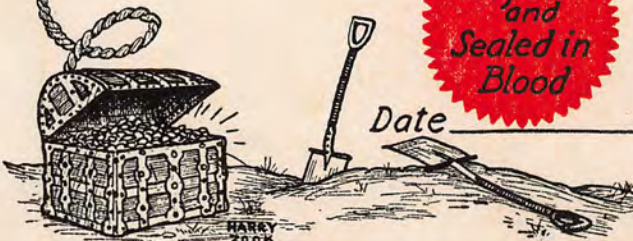
Third Mate

*One-Eyed Zook*

Boatswain



Date \_\_\_\_\_



11.

RADIOPHONE STATION

WBCN

730 WEST 65TH STREET  
CHICAGO, ILL.



574



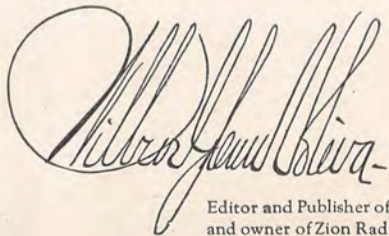
Mr. D. Thomas,  
Twenty-sixth Street Ferry Co.,  
Proctorville, O.

# SPECIAL NOTICE

A Special RADIO NUMBER of LEAVES OF HEALING is now being prepared for publication.

This Issue will present many pictures, together with descriptive articles, of Radiophone Broadcasting Station WCBD, located at Zion, Illinois. Among other pictures will be a large picture, printed in four colors, of the principal studio of the main Radio Building.

Requests from listeners to Station WCBD for this Special Number will be given special and prompt attention.

A large, stylized handwritten signature in black ink, which appears to read "Albert J. Blair". The signature is written in a cursive style with large, sweeping loops.

Editor and Publisher of "Leaves of Healing"  
and owner of Zion Radiophone Broadcasting  
Station W C B D, Zion, Illinois.

# SCHEDULE

## Zion Radiophone Broadcasting Station

W C B D - Zion, Illinois

Wave Length 870 Kilocycles—345 Meters

Owned and Operated by Wilbur Glenn Voliva

### STATION SLOGAN

“Where God Rules Man Prospers”

### CLOSING SALUTATION

“Peace Be Unto You”

*All Broadcasting done on Central Standard Time*

**J. H. DEPEW**  
Manager  
Chief Announcer  
Publicity Director

**JOHN D. THOMAS**  
Program Director  
Conductor of  
Zion White-robed  
Choir

**P. B. NEWCOMER**  
Conductor of  
Zion Band

**L. J. HIRE**  
Conductor of  
Zion Orchestra

**FRED FAASSEN**  
Organist  
Shiloh Tabernacle

*Broadcast from Shiloh Tabernacle:*

**EVERY LORD'S DAY (SUNDAY):**

Bible School from 9:00 to 10:45 a. m.

Zion Orchestra plays from 9:00 to 9:30 a. m.

Principal Service of the Entire Week, from 2:30 to 6:00 p. m. Special music by Zion Band or Organ, and Zion White-robed Choir.

Address by Wilbur Glenn Voliva, General Overseer of the Christian Catholic Apostolic Church in Zion.

*Broadcast from the Studio:*

**CONCERTS:** Every Monday and Thursday evening, 8:00 to 10:15.

**EVERY THURSDAY:**

From 2:30 to 3:45 p. m., Sacred Solos and Duets.

Address either by Wilbur Glenn Voliva, General Overseer of the Christian Catholic Apostolic Church in Zion, or one of his representatives.

Special sacred concerts every Second and Fourth Lord's Day (Sunday) evenings in the month, 8:00 to 10:15.





RADIO STATION W C B D is located on the Temple Site, near Shiloh Tabernacle, at Zion, Illinois. Zion is located midway between Chicago and Milwaukee on Lake Michigan. The Chicago and Northwestern Railway and the Chicago North Shore and Milwaukee Electric Railway run through the City. This station is in plain sight of Sheridan Road (the main automobile thoroughfare between Chicago and Milwaukee) which becomes Elijah Avenue in Zion.

Station W C B D is of Class B Type and was erected by the Western Electric Company of Chicago, the equipment being the standard Western Electric 500-Watt Radio Telephone Set, using Heising constant current method of modulation. It has one 50-watt amplifying tube, two modulating tubes of 250 watts each, and two oscillating tubes of 250 watts each. The steel towers are 150 feet high and stand at an elevation of 80 feet above Lake Michigan. The aerial is 95 feet in horizontal length, 4-wire, T-type, and is at an elevation of 125 feet.

Visitors are welcome at both Station W C B D and Shiloh Tabernacle.

Information regarding the City of Zion, The Christian Catholic Apostolic Church in Zion, Zion Educational Institutions, and Zion Institutions and Industries (Wilbur Glenn Voliva) is supplied by two weekly publications—LEAVES OF HEALING and THE THEOCRAT.

Sample copies of these papers will be sent on request, free of cost.

LEAVES OF HEALING for 1 year — \$2.00;

Trial Subscription for LEAVES OF HEALING—10 weeks for 25c;

THE THEOCRAT for 1 year — \$1.00.

Trial Subscription for THE THEOCRAT — 10 weeks for 15c.

Trial Subscription for both papers — 10 weeks 40c.

# ZION Radiophone Broadcasting Station

W C B D  
ZION, ILLINOIS  
TELEPHONE 98

STATION SLOGAN

“Where God Rules Man Prospers”

RETURN AFTER 5 DAYS TO  
RADIO BROADCASTING STATION  
W C B D  
ZION, ILLINOIS



Mr. David Thomas,  
Proctorville, O H I O .

# Zion Radiocasting Station

## WCBD

OWNED AND OPERATED BY WILBUR GLENN VOLIVA

**Station Slogan**  
"Where God rules man prospers"

CLOSING SALUTATION  
"Peace be unto you"

ADMINISTRATION BUILDING  
ZION, ILLINOIS



STUDIO TELEPHONE 98  
OFFICE TELEPHONE 20

November 14, 1935

Dear Radio Friend:

We were glad to receive your communication and learn that you are a listener to Radio Station WCBD.

It was thoughtful of you to write us, and we assure you that it gives us great pleasure to acknowledge your reception and number you among our multitude of friends.

Enclosed is our schedule which describes our new 5000-watt station.

Station WCBD stands beside Shiloh Tabernacle on the Temple Site in Shiloh Park, in the center of the city of Zion. Our friends are always welcome and you are heartily invited to visit us whenever it is convenient.

With kindest regards and assuring you that we will be glad to hear from you at any time, we are

Faithfully yours,

RADIO STATION WCBD

*J. H. DePew*  
Chief Announcer.

JHD.es

# SCHEDULE

## Zion Radiophone Station

### W C B D - Zion, Illinois

Telephones Zion 98 and 99

Wave Length 345 Meters—870 Kilocycles

Owned and Operated by Wilbur Glenn Voliva

STATION SLOGAN

"Where God Rules Man Prospers"

CLOSING SALUTATION

"Peace Be Unto You"

*All Broadcasting done on Central Standard Time*

#### J. H. DEPEW

Manager  
Chief Announcer  
Publicity Director

#### JOHN D. THOMAS

Program Director  
Conductor of  
Zion White-robed  
Choir

#### P. B. NEWCOMER

Conductor of  
Zion Band

#### L. J. HIRE

Conductor of  
Zion Orchestra

#### FRED FAASSEN

Organist  
Shiloh Tabernacle

#### *Broadcast from Shiloh Tabernacle:*

##### EVERY LORD'S DAY (SUNDAY):

Bible School from 9:00 to 10:45 a. m.

Zion Orchestra plays from 9:00 to 9:30 a. m.

Principal Service of the Entire Week, from 2:30 to 6:00 p. m.

Special Music by Zion Band or Organ, and Zion White-robed Choir.

Address by Wilbur Glenn Voliva, General Overseer of the Christian Catholic Apostolic Church in Zion.

##### EVERY WEDNESDAY:

Organ Concert from 12:30 to 1:00 p. m.

#### *Broadcast from the Studio:*

CONCERTS: Every Tuesday and Thursday Evening, 8:00 to 10:30.

Special Sacred concerts every Lord's Day (Sunday) evening, 8:00 to 10:30.

##### EVERY THURSDAY:

Service from 2:30 to 3:45 p. m., Sacred Solos and Duets.

Address either by Wilbur Glenn Voliva, General Overseer of the Christian Catholic Apostolic Church in Zion, or by one of his representatives.



**R**ADIO STATION W C B D is located on the Temple Site, near Shiloh Tabernacle, at Zion, Illinois. Zion is located midway between Chicago and Milwaukee on Lake Michigan. The Chicago and Northwestern Railway and the Chicago North Shore and Milwaukee Electric Railway run through the City. This station is in plain sight of Sheridan Road (the main automobile thoroughfare between Chicago and Milwaukee) which becomes Elijah Avenue in Zion.

Station W C B D is of Class B Type and was erected by the Western Electric Company of Chicago, the equipment being the standard Western Electric 5000-Watt Radio Telephone Set, using Heising constant current method of modulation. The modulated carrier is fed into two high-frequency amplifiers connected in multiple. These high-frequency amplifier tubes are water-cooled, as are also the three 10,000-volt rectifier tubes. The aerial is a squirrel cage "T" type supported by a messenger cable on steel towers 200 feet high and standing 420 feet apart. These towers are at an elevation of 80 feet above Lake Michigan.

Visitors are welcome at both the Radio Station and Shiloh Tabernacle.

Information regarding the City of Zion, The Christian Catholic Apostolic Church in Zion, Zion Educational Institutions, and Zion Institutions and Industries (Wilbur Glenn Voliva) is supplied by two weekly publications—LEAVES OF HEALING and THE THEOCRAT.

Sample copies of these papers will be sent on request, free of cost.

LEAVES OF HEALING for 1 year — \$2.00.

THE THEOCRAT for 1 year — \$1.00.

Trial Subscription for LEAVES OF HEALING—10 weeks for 25c.

Trial Subscription for THE THEOCRAT — 10 weeks for 15c.

Trial Subscription for both papers — 10 weeks 40c.

# ZION Radiophone Station

**W C B D**  
ZION, ILLINOIS

Telephones: Zion 98  
Zion 99  
Office, Zion 20

STATION SLOGAN

"Where God Rules Man Prospers"

326

Return after 5 days to

Zion Broadcasting Station  
WCBD

Zion - Illinois



514

Mr. David F. Thomas,  
Proctorville, Ohio.

CHARLENE STATION WCEE  
ELGIN, ILLINOIS

275 METERS

**"WE CALL EVERY EVENING"**

THIS IS TO VERIFY YOUR RECEPTION OF STATION WCEE. IF YOU ARE SAVING "EKKO" VERIFICATION STAMPS, SEND US ONE DIME, (NOT IN POSTAGE STAMPS) WITH A RECORD OF YOUR LATEST RECEPTION OF THIS STATION AND WE WILL MAIL YOU A STAMP FOR YOUR ALBUM

On the air from 10:30 to 12 P.M.  
every evening except Sunday and  
Thursday.



147.

33c

CHICAGO STUDIO

VILLA OLIVIA  
RADIOPHONE STATION

W. T. A. S.

SUITE 728 KIMBALL BLDG.  
CHICAGO, ILL.



LET  
CITIZENS  
TRAINING

WCEE.

David Thomas  
Proctorville, Ohio.

# WCFL Inc.

T H E V O I C E O F L A B O R

666 LAKE SHORE DRIVE, CHICAGO • TELEPHONE SUPERIOR 5300

January 5th,  
1942.

Dear Friend:

Your communication of recent date has been received.

During the War-time emergency, WCFL is not confirming or denying reports of verification. Your letter is placed on file, but no effort has been made to determine whether or not the program you logged came from this Station.

Cordially yours,



Maynard F. Marquardt  
General Manager and Technical  
Supervisor - WCFL

b1



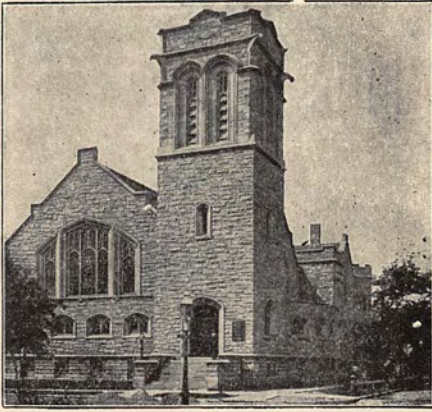
THE VOICE  
OF LABOR

WCFL Inc.

666 LAKE SHORE DRIVE, CHICAGO



Mr. David F. Thomas  
Proctorville, Ohio



# NORTH SHORE CONGREGATIONAL CHURCH

WILSON AVENUE AND SHERIDAN ROAD  
CHICAGO

JOHN C. O'HAIR, PASTOR  
MAURICE M. JOHNSON, ASSISTANT PASTOR

G. T. PUSHMAN  
PRES. BOARD OF TRUSTEES

I. D. KAY, TREASURER

GEORGE L. SHAW  
TREASURER BENEVOLENCES

DR. L. C. HIBBARD  
CHURCH CLERK

A. G. MELVILLE  
SUPT. BIBLE SCHOOL

JOHN R. LONG, HEAD USHER

---

BROADCASTING STATION W.D.B.Y. THE GOSPEL BY RADIO

---

CHURCH PHONE:  
EDGEWATER 1248

Nov. 26, 1924.

Mr. David F. Thomas,  
Proctorville, Ohio.

Dear Mr. Thomas,

In reply to your letter of the 24th, let me say that the wave length of our station is 258 meters, and the power 500 Watts. We broadcast three times on Sunday, our Morning Church service at 11 A.M., an afternoon studio service at 3:30 P.M., and our regular evening church service at 7:45 P.M. Then on Wednesday night at 7 P.M., Mr. O'Hair teaches his radio Bible Class. On Thursday night at 7 P.M., we broadcast a musical service.

We are glad you are receiving our evening services so well, and that you enjoy them. We trust that the Message will bring a real blessing into your home, and into your own soul, that you may in turn give out of the Riches of His Grace that you receive. We are grateful to God for this means of getting out the Gospel to so many and are confident that His Word will not return unto Him void.

May the Lord richly bless you and use you for His glory.

Very sincerely,

*Frances H. Fredrickson*

151

North Shore Congregational Church

Pastor's Study

1011 WILSON AVENUE  
CHICAGO



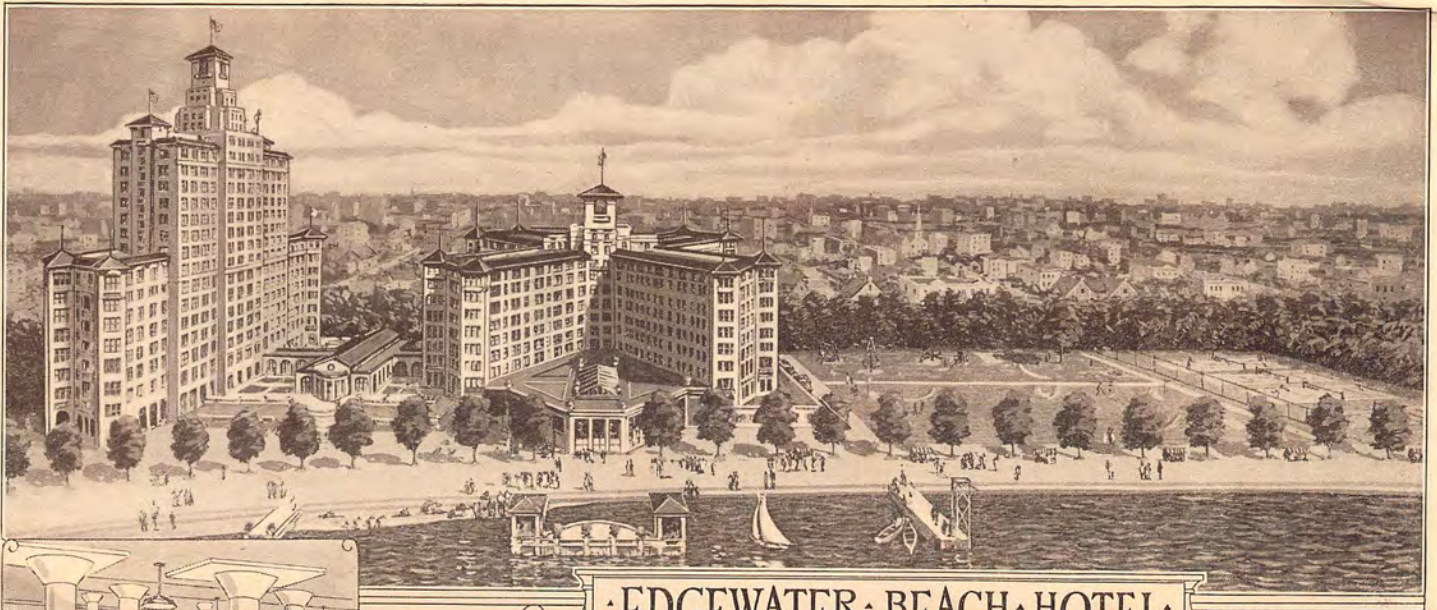
151.



10

WDBY

Mr. David F. Thomas,  
26th St. Ferry Co.,  
Proctorville, Ohio.



Telephone  
Edgewater 6000  
Cable Address  
Edgebeach

EDGEWATER BEACH HOTEL  
5300 BLOCK SHERIDAN ROAD  
Chicago

W. M. Dewey  
General Manager  
Geo. A. Beesley  
Asst. General Manager

EUROPEAN PLAN  
*The Only Hotel In Chicago With a  
Garage In Direct Connection.*

1924

Dear Friend:

We are glad to know that you have heard the programs broadcast from our Crystal Studio and Marine Dining Room, Station WEBH, Edgewater Beach Hotel—Chicago Evening Post Broadcasting Station.

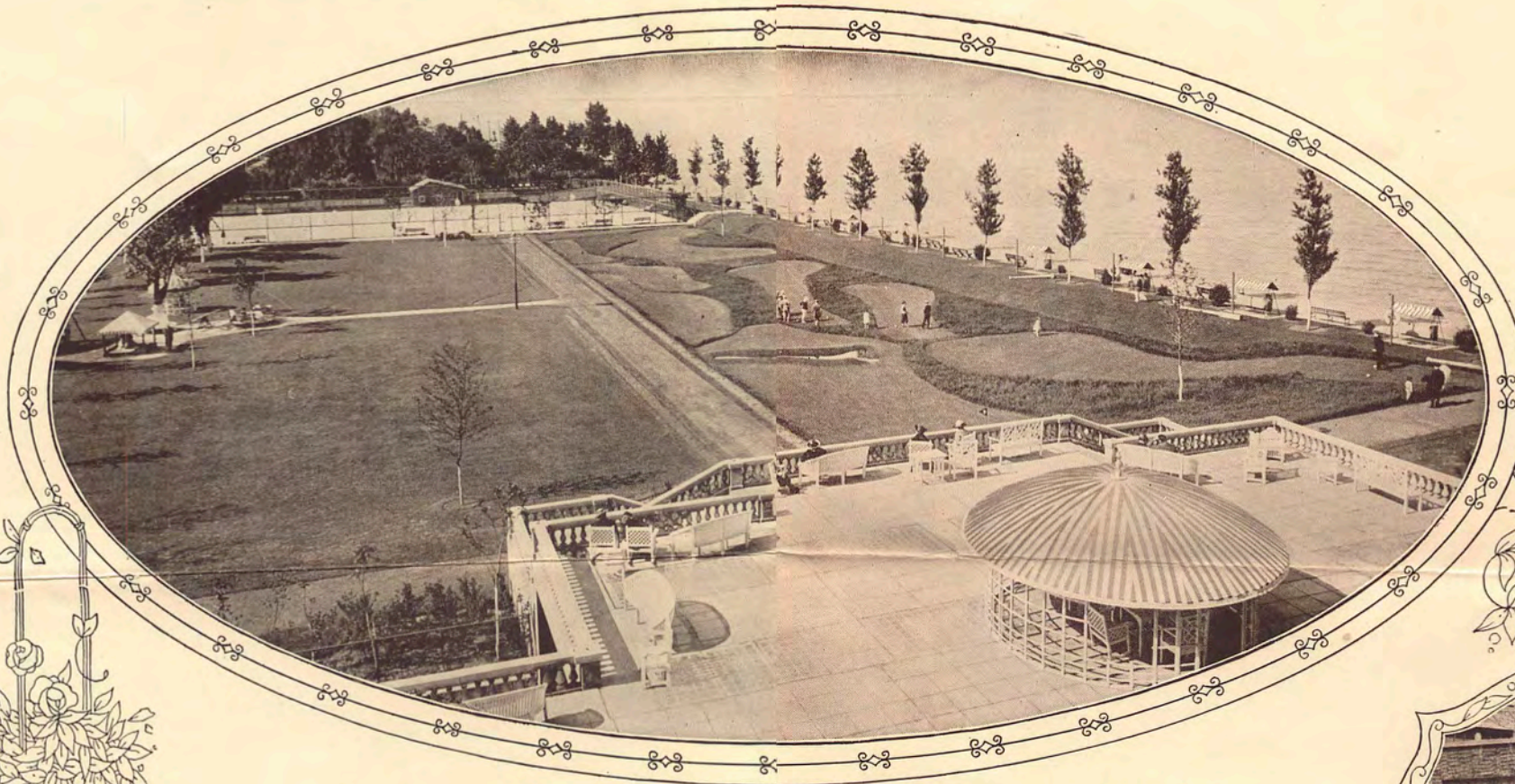
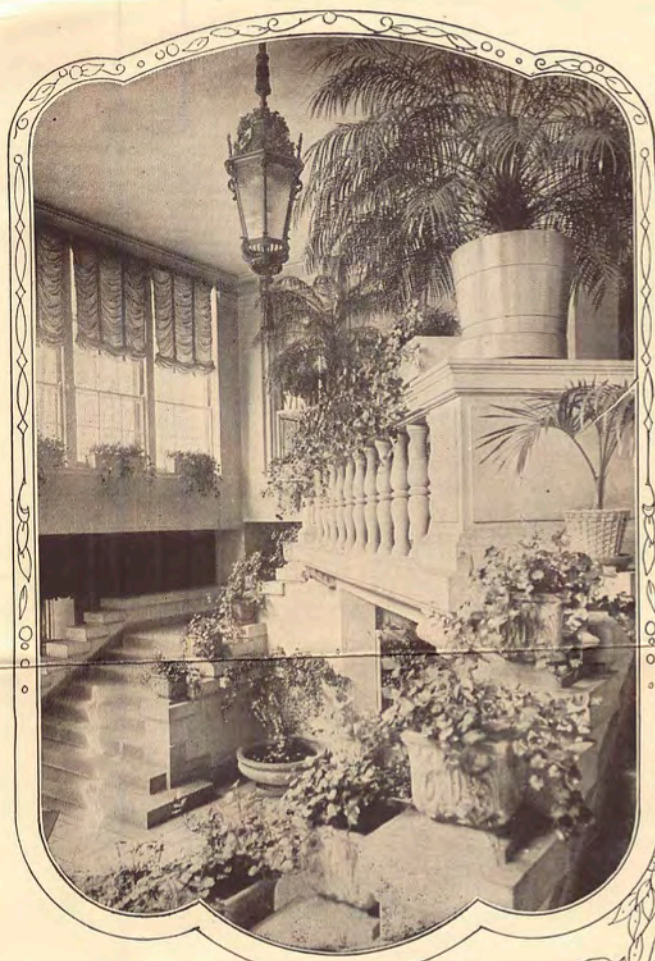
Thank you for writing us.

Yours very truly,

Manager  
EDGEWATER BEACH HOTEL

General Manager  
CHICAGO EVENING POST





### Distinctive Features of the Edgewater Beach Hotel

1000 rooms, each with bath and outside exposure and view of Lake Michigan, beautiful lawns and gardens in the most exclusive residential district of Chicago

The advantages and atmosphere of an exclusive club.  
 Music and entertainment of the highest order.  
 Indoor and outdoor dancing.  
 Extensive lawns and gardens with Beach Promenade.  
 Private Bathing Beach.  
 Regulation Tennis Court.

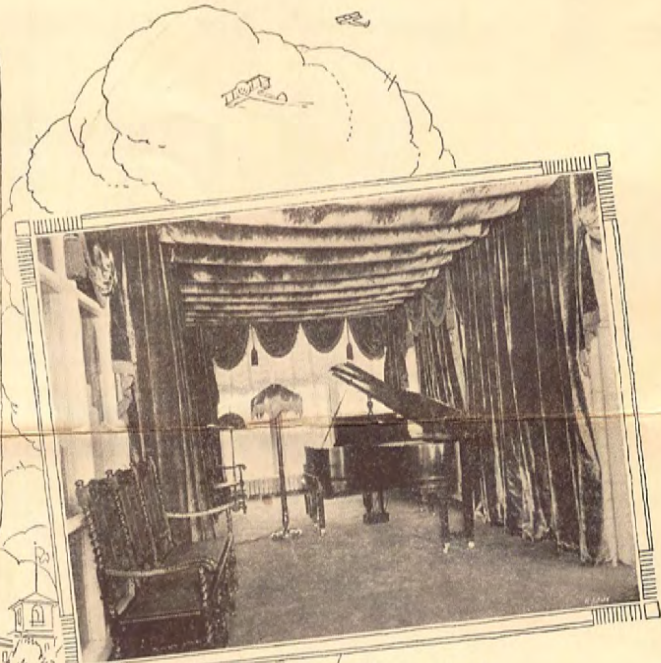
Nine-hole miniature golf course.  
 Children's Playground.  
 A powerful Radio Broadcasting Station.  
 Private motor coaches to business, shopping and theatre districts.  
 A Garage accommodating 200 cars (exclusively for hotel guests) in direct connection with the hotel.

"THE MOTORITS' MECCA"

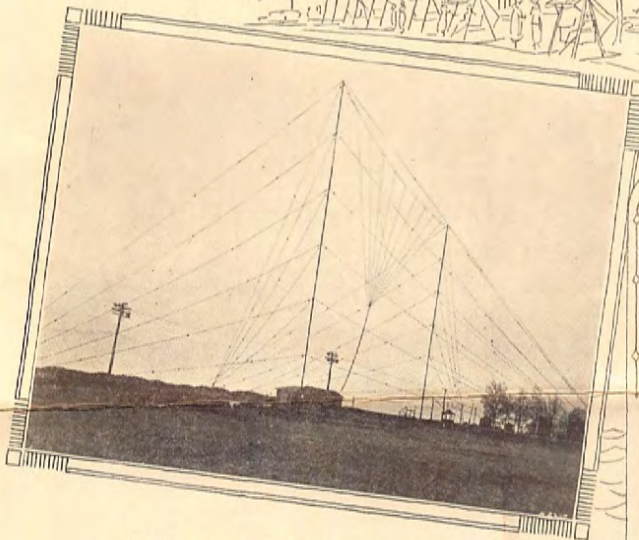




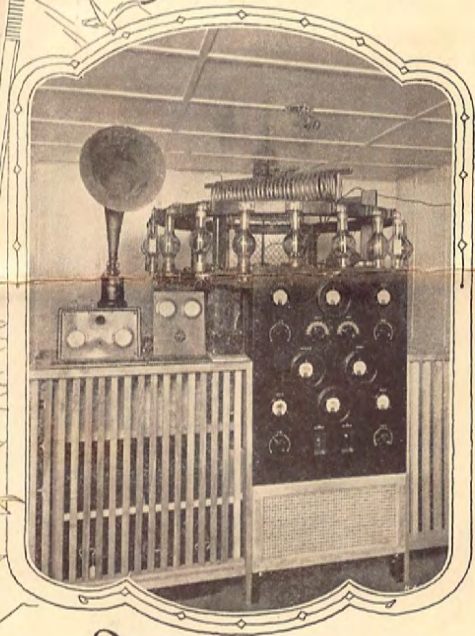
*Operating Room*



*Crystal Studio*



*Antenna System*



*Transmitter*



RETURN IN 10 DAYS TO

**EDGEWATER BEACH HOTEL**

ON THE LAKE, 5300 BLOCK SHERIDAN ROAD.

CHICAGO, ILLINOIS



47



*Mr. David F. Thomas,  
Proctorville,  
Ohio*

RADIO STATION



266 METERS 1130 KILOCYCLES

Owned and Operated by the  
**ALL-AMERICAN RADIO CORPORATION**  
4201 Belmont Avenue - Chicago

Mr. Donald F. Thomas,  
Proctorville, O.

Dear Sir:

Thank you for your recent letter regarding our Station.

We are pleased to note your interest in us and are enclosing our broadcasting schedule.

On the 6 to 7 P.M. dinner hour concert, we feature the RAULAND-LYRIC TRIO, consisting of piano, violin and cello, playing a strictly classical program. Mr. Russell Hendrickson of the Chicago Symphony Orchestra contributes cello solos. Mr. George Unger, violinist, and Mr. Frank Westphal, pianist, are other celebrated artists broadcasting at this hour.

On the 8 to 10 P.M. program we have the RAULAND-LYRIC TRIO, classical numbers, the ALL-AMERICAN PIONEERS, our own studio dance orchestra, playing popular hits of the day, and artists such as James Beaumont, banjo soloist, Hal Lage, saxophone soloist, as well as concertina numbers, Hawaiian guitar solos and duets, and other colorful selections.

The 12 to 2 A.M. programs are strictly of a popular nature, featuring the ALL-AMERICAN PIONEERS, Miss Marie Tully, Frank Westphal and other assisting artists.

Trusting that you will continue to listen in on our programs and keep in touch with us as to how we are "coming in", we remain

Broadcastingly yours,

RADIOCAST STATION W.E.N.R.

Frank Westphal, Director.



369

557

RADIO STATION



266 METERS 1130 KILOCYCLES

Owned and Operated by the  
**ALL-AMERICAN RADIO CORPORATION**  
4201 Belmont Avenue · Chicago



Mr. Donald. F. Thomas,  
Proctorville, O.

H. C. LEWIS, PRESIDENT

# Coyne ELECTRICAL School

INC.

America's  
Greatest  
School of  
Practical  
Electricity



Individual  
Instruction  
Day and Eve.  
start anytime  
always open

PHONES MONROE { 6780  
6781  
6729

1300-10 W. HARRISON STREET  
CHICAGO, ILL.  
STATION W G E S  
250 - - - METERS

May 7, 1925.

Dear Mr. Thomas:

Just a brief line to thank you for your  
little note of appreciation for our W G E S programs.

I hope you will always find our programs  
enjoyable and it'll be a real pleasure to me if you'll con-  
tinue to tune in - - and your friends are invited too.

Very sincerely yours,

A large, cursive handwritten signature that reads 'H.C. Lewis'. The signature is written in dark ink and is positioned above the typed name and title.

H.C. LEWIS, President  
Owning and Operating W G E S

HCL:FK

ONE THOUSAND DOLLARS  
IN CASH PRIZES AWARDED IN  
BIG CONTEST  
DURING MONTH OF MAY  
ED. PINAUD MONTH

Cash prizes will be awarded for best letters about ED. PINAUD PRODUCTS and why they are such favorites with the public.

Tell which item you like best and why.

Every man, woman and child may enter this contest, except those in the employ of PARFUMERIE ED. PINAUD.

CONTEST BEGINS MAY 1st and will close May 31st.

Cash Prizes are as follows:

1st PRIZE	\$200.00
2nd PRIZE	\$100.00
3rd and 4th PRIZES	\$50.00 each
FIVE PRIZES	\$25.00 each
TWENTY PRIZES	\$10.00 each
FIFTY FIVE PRIZES	\$5.00 each

List of prize winners will be published in newspapers during month of June.

MAIL YOUR CONTEST LETTERS TO:  
PARFUMERIE ED. PINAUD  
DEPT. D

1310 North American Building  
CHICAGO, ILLINOIS

IN ALL UNIVERSAL WORLD'S EXPOSITIONS, THE HIGHEST AWARDS WERE OBTAINED BY PARFUMERIE ED. PINAUD

ONE THOUSAND DOLLARS

\$1000.00

IN

CASH PRIZES

OFFERED BY

ED. PINAUD

DURING THE MONTH OF MAY



THE MONTH OF MAY IS LILAC MONTH  
THEREFORE  
MAY IS ED. PINAUD MONTH

PARFUMERIE ED. PINAUD

1310 NORTH AMERICAN BUILDING

CHICAGO, ILL.



# ED. PINAUD

TELLS

## HOW TO BEGIN THE DAY RIGHT

ED. PINAUD  
PRESENTS  
AN  
ALL STAR  
PERFORMANCE



ED. PINAUD'S  
LILAC BATH SALTS



ED. PINAUD'S  
ELIXIR SHAMPOO



ED. PINAUD'S  
LILAS DE FRANCE



ED. PINAUD'S  
LILAC TALC

What a delight to step into  
a bath perfumed with  
**ED. PINAUD'S  
LILAC BATH SALTS**

And during the bath  
to shampoo the hair  
with the best and most  
fragrant shampoo  
**ED. PINAUD'S  
ELIXIR SHAMPOO**

After the bath a rubdown with  
the unexcelled lilac vegetal  
perfume (men appreciate the  
luxury of Lilas de France  
after shaving)

**ED. PINAUD'S  
LILAS DE FRANCE**

Now a sprinkle of talc  
so smooth and refreshing  
**ED. PINAUD'S  
LILAC TALC**



ED. PINAUD'S  
EAU DE QUININE  
HAIR TONIC



ED. PINAUD'S  
BRILLANTINE



ED. PINAUD'S  
AROMATIC  
DENTAL CREAM



ED. PINAUD'S  
SHAVING CREAM

CENSORED  
AND  
APPROVED  
BY  
DISCRIMINATING  
PEOPLE  
ALL OVER  
THE WORLD  
FOR GENERATIONS

**ED. PINAUD  
ALWAYS MEANS  
QUALITY  
DEPENDABILITY**

An application of hair  
tonic which gives luster  
to the hair and imparts  
a scent that spells  
refinement

**ED. PINAUD'S  
HAIR TONIC**

To lend just a little more  
brilliancy to the hair  
and to keep it in place

**ED. PINAUD'S  
BRILLANTINE**

No toilette is complete  
without the use of the  
dental cream, superior  
in quality and different  
from domestic tooth pastes

**ED. PINAUD'S  
AROMATIC DENTAL CREAM**

**GENTLEMEN!**  
Of special interest to you  
the incomparable  
**ED. PINAUD'S  
SHAVING CREAM**

Refreshed, invigorated and  
satisfied with  
your appearance you begin  
the day with  
something pleasant  
always lingering about you  
What is it?

**ED. PINAUD'S!**

Do not accept imitations!  
Insist always on the genuine  
ED. PINAUD PRODUCTS, else  
your day might be spoiled  
by a spurious imitation

151

839

PRIVATE OFFICE OF  
THE PRESIDENT  
1300 W. HARRISON STREET  
CHICAGO, ILL.  
STATION W G E S

CHICAGO  
MAY 7  
1130PM  
ILL.

CHICAGO  
MAY 7  
1925

36  
1925

CHICAGO  
MAY 7  
1130PM  
ILL.



Mr. Laird F. Thomas  
Proctorville Ohio

C. L. BEARDSLEY, MGR.

JOE COYLE, DIRECTOR

DICK WELLS, OPERATOR

# RADIO STATION WHBF

222 METERS

1350 KILOCYCLES

OWNED AND OPERATED BY  
BEARDSLEY RADIO AND SPECIALTY CO.  
ROCK ISLAND, ILLINOIS

January 27th, 1927

Mr. David F. Thomas  
62 South Washington,  
Delaware, Ohio

Dear Sir:

We have your kind favor advising that you heard a program from our radio station and we appreciate your comments very much, especially as you are quite a distance from this city, and we are only using 100 watts power. We are inclosing one of our cards showing our schedule and we trust that you will succeed in hearing us continually and we will always endeavor to broadcast programs that we believe you will enjoy.

Trusting we shall hear from you again in the very near future, and thanking you, indeed, for writing us, we are,

Yours very truly,

RADIO STATION WHBF.

*C. L. Beardsley.*  
Mgr. *H.S.*

CLB:HS



# RADIO BROADCASTING STATION

# W H B F

OWNED AND OPERATED BY

## BEARDSLEY RADIO & SPECIALTY CO.

217 - 18th Street,

ROCK ISLAND, ILLINOIS

DATE \_\_\_\_\_

THANK YOU \_\_\_\_\_

for your kindness in reporting our program on \_\_\_\_\_ We are using  
100 Watts and operating on a wave length of 222 meters and endeavor to furnish the highest class programs. You  
are cordially invited to visit our Studio when you find it convenient and we trust you will report our future programs.

### SCHEDULES

MONDAY . . . . . 7 to 9 P. M.  
WEDNESDAY . . . . . 7 to 9 P. M.  
SATURDAY . . . . . 2 to 4 P. M. & 7 to 9 P. M.

YOURS VERY TRULY

## BEARDSLEY RADIO & SPECIALTY CO.

MAIN OFFICE  
**BEARDSLEY'S**  
SPECIALTIES

217 Eighteenth Street  
ROCK ISLAND, ILL.

W H B F



Mr. David F. Thomas  
62 South Washington,  
Delaware, Ohio

# GREETINGS FROM STATION "WHBM"

(THE VOICE OF EGYPT)

East St. Louis, Illinois.

We Thank You:—

Telephone

We wish to acknowledge your Letter acknowledgement of your reception  
Wire

of our radio broadcasting program and we thank you for the interest shown.

We hope that you will listen in on our programs regularly at (5 to 6) each evening with special concerts each Sunday. also 8 p.m. every eve

Write us often and come down at your convenience and see the station in operation.

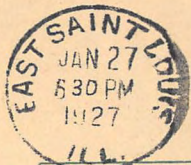
The wave length is 215.7 meters and our power is 100 Watts. Telephone number is East 3700, give us a ring.

Sincerely,

CHAMBER OF COMMERCE,

L. H. Forman, Manager.

616



THIS SIDE OF CARD IS FOR ADDRESS

Mr. David E. Thomas  
63 S. Washington  
Delaware,  
Ohio.

Buckingham 0316  
825 Barry Avenue



Station W H T  
Chicago, Illinois

JESUS SAITH UNTO HIM  
'I AM THE WAY-THE TRUTH-THE LIFE:  
NO MAN COMETH UNTO THE FATHER BUT BY ME.'  
JOHN 14:6

Paul Rader, Chaplain

November 20, 1925.

Mr. David F. Thomas,  
Proctorville, ,  
Ohio.

My dear Mr. Thomas:

Thank you very much for your expression of appreciation of last Sunday's program of the NATIONAL RADIO CHAPEL over "WHT". We are glad, indeed, to know that you "tuned in" on us, and hope that you will do so often.

We have prepared a small booklet for our friends on the air, giving detailed information of our plans and programs. If you desire this, write in and we will be glad to send you a copy. There is no charge, except two cents for postage.

Every Sunday program of station WHT is broadcasted by the NATIONAL RADIO CHAPEL under the direction of Paul Rader, America's famous evangelist. We are enclosing a schedule of the day for your convenience.

Be sure to let us hear from you again.

Yours sincerely,

THE NATIONAL RADIO CHAPEL

*Fance B. Fatham*

Secretary

LBL:W

Regular Sunday Program of  
THE NATIONAL RADIO CHAPEL  
Paul Rader, Chaplain  
W H T - Chicago - 400

- 12-12:45 Sunday Dinner Sacred Concert  
Special request numbers on the Kilgen Organ in the WHT Studio, by R. W. Oliver. Vocal soloists.
- 12:45-1:15 Sunshine hour  
For those who are shut-ins; for patients in hospitals; for those in far-away places. From the Chapel Studio.
- 1:15-1:30 Shepherd Time  
For the kiddies, featuring the Shepherd Scroll.
- 1:30-1:45 Aerial Girls  
Something new for girls, from 12 to 17.
- 1:45-2 Radio Rangers  
For wide-awake boys, from 12 to 17.
- 2-2:05 The Radio Colporteur  
Five minutes review of the finest Gospel literature, featuring some of the books you ought to have in your library.
- 2:05-2:15 Missionary Hour  
Returned missionaries will tell of their experiences and fields.
- 2:15-2:50 Fellowship Program  
Sacred music by visiting choirs and artists, by invitation. Our purpose in this hour is to fellowship with musical organizations from every evangelical denomination.
- 2:50-3:45 Afternoon Service  
Program by children and young people of the Tabernacle, in radio sing-song led by R.J.Oliver. Sermon by Paul Rader, Dr. R. E. Neighbour, or visiting speakers.
- 5:30-5:45 Vesper Concert  
Radio Choir and vocal soloists of the National Radio Chapel.
- 5:45-6:30 Young Women's Council  
Under the leadership of Mrs. A.M. Johnson, Director of Chicago Business Women's Council.
- 6:30-9:15 Evening Service of the Chicago Gospel Tabernacle  
Concert by Tabernacle Band, and Choir. Sermon by Paul Rader.
- 9:15-10:30 Request Program  
Requests which have come in during the week will be answered at this hour.
- 10:30-11:30 Back Home Hour  
Paul Rader and the National Radio Chapel Staff.

All Programs broadcast on Central Standard Time

**9th**  
*Annual*  
**Service**  
**FOR MEN ONLY**  
at  
**ORCHESTRA HALL**  
or  
**THANKSGIVING**  
**MORNING** · Nov. 26  
10:30 A.M. to 12 A.M.  
**Paul Rader Speaks**  
"WHAT WILL STOP THE CRIME WAVE?"  
MUSICAL PROGRAM BY  
NATIONAL RADIO CHAPEL  
STAFF AND BROADCAST  
OVER STATION  
**WHT**  
(over)



**WHY**  
**NOT**  
**GO**  
to the  
**THANKSGIVING**  
**EVENING**  
**CONCERT**  
and hear  
**BAND CHOIR ORCHESTRA**  
**AND OTHER MUSICAL FEATURES**  
directed by  
**RICHARD J. OLIVER,**  
of the  
**CHICAGO GOSPEL TABERNACLE**  
Clark - Halsted - Barry  
**ALL SEATS FREE**  
BROADCAST  
THROUGH STATION  
**WHT**  
(OVER)

331

WHT

519



825 BARRY AVENUE  
 CHICAGO



Mr. David D. Thomas,  
 Proctorville,  
 Ohio.





# WB



RADIO STATION  
6310 -12 BROADWAY  
CHICAGO ILL.  
U. S. A.

HARRY GEISE  
DIRECTOR AND ANNOUNCER

September 3, 1925.

David F. Thomas,  
Proctorville, Ohio.

Dear Mr. Thomas;

In reply to your communication of August 30th., we wish to advise that we do issue Ekko Stamps, and upon receipt of ten cents we will be glad to furnish you with one, providing you forward verification of our program.

Write us again at any time, we are always pleased to hear from our listeners.

Yours very truly,

RADIO STATION WB,OB,

By:

*Harry Geise*

KA/HG

## CORRECT FOOD

Insures Better Health

Correct food is the basis of Good Health. Consider, if you will, the importance of Breads as a food—then weigh the serious importance of Correct Bread. For many years we have specialized in compounding and baking only Special Health Breads, each for a definite purpose; to aid and restore health, comfort and vitality. Thousands of people young and old are suffering today from lack of proper bread foods.

**In All Good Stores You Will Find  
Carl Sulzer's Special Health Breads**

**JACK SPRAT BREAD**—Safely and naturally combats overweight.

**WHOLE WHEAT BREAD**—100% Whole Wheat. Full of nourishments, fine in flavor and texture.

**BRAN BREAD**—A high quality Bran Bread, a combination of whole wheat and bran. A sure aid to correct constipation.

**RAISIN BRAN BREAD**—A combination of Raisins and Bran and Whole Wheat that makes a delightful bran-food.

**GLUTEN BREAD**—For Diabetes and diabetic conditions. Uniform in analysis and quality.

**CARL SULZER & COMPANY**

*Bakers of Special Health Breads*

114 W. Huron St.

Tel. Dearborn 6317

## Weekly Program Schedule

Jack Sprat Concert Trio

Broadcasting from

**W 1 B D**



RADIO STATION  
6310 12 BROADWAY  
CHICAGO ILL.  
U. S. A.



*Owned and Operated by*

**NELSON BROTHERS**

Bond & Mortgage Co.

**DAN RUSSO**

*and*

**TED FIORITO**

WAVE LENGTH

*226 Meters*

POWER

*500 Watts*

**HARRY GEISE**

*Director and Announcer*

**PHILLIP LATIN**

*Radio Engineer*

## WEEKLY PROGRAMS



Daily Except  
Sunday - - 2:00 P. M. to 4:00 P. M.  
*Popular Afternoon Program for Shut Ins*



Daily Except Sunday  
& Monday - 6:00 P. M. to 8:00 P. M.  
*Classical Dinner Concert, Vocal and  
Instrumental  
Jack Sprat Concert Trio*



Wednesday - 10:00 P. M. to 12:00 M.  
*Varied Program*



Friday - - 10:00 P. M. to 2:00 A. M.  
*Varied Program*



Tuesday &  
Thursday - - Midnight to 3:00 A. M.  
*Popular Midnight Jamboree*

Featuring Dan Russo, Ted Fiorito, Harry Geise  
and other popular artists.

(Chicago Daylight Saving Time)

## SUNDAY PROGRAMS



10:15 A. M. - Services of the Edgewater  
Presbyterian Church.—  
Sermon by Rev. Asa J.  
Ferry.



2:00 P. M. to 4:00 P. M.  
Sunday afternoon Concert.



6:00 P. M. to 8:00 P. M.  
Sunday Evening Concert  
*Jack Sprat Concert Trio*



10:00 P. M. to 12:00 M.  
Varied Program

(Chicago Daylight Saving Time)

### JACK SPRAT CONCERT TRIO

*Featuring*

CARL LINNER	-	-	-	Piano
NATHAN ZIMMERHOFF	-	-	-	Cello
FRED GLEICHMAN	-	-	-	Violin

*Presented by*

CARL SULZER & CO.

278



**WB 1 B 10**

RADIO STATION  
6310 -12 BROADWAY  
CHICAGO ILL.  
U.S.A.




466



David F. Thomas,  
Proctorville, Ohio.

# W J A Z

WAVE LENGTH 322.4 METERS

 **ZENITH BROADCASTING STATION**  
STRAUS BUILDING  
CHICAGO

Mr. David Thomas,  
Proctorville,  
Ohio.

November 25th, 1925.

Dear Mr. Thomas:-

Thank you very much for your kindness in sending us acknowledgment of our program of last week.

We broadcast regularly every Thursday evening between the hours of 10:00 and 12:00 P. M., Central Standard Time, on a wave length of 322.4 meters. If you own one of the selective SUPER-ZENITH sets, "WJAZ" will come in at about 47 on your left hand dial.

"WJAZ" is one of the strong stations of the country, and we have perfected modulation to a point that is unexcelled. Our "Spanish Garden" studio is an inspiration in acoustics and appearance, and we broadcast nothing but the best music and artists. We would welcome a visit from you at any time.

Hoping that you will continue to listen for and enjoy what we have to offer and again thanking you for taking the trouble to write and tell us how we were received, we remain

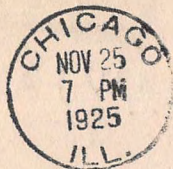
Cordially and sincerely yours,

ZENITH RADIO CORPORATION

*R. V. Goss*  
Station WJAZ

337

6 RD



RED CROSS  
ROLL CALL  
JOIN



Mr. David Thomas,  
Proctorville,  
Ohio.

**ZENITH**

**WJAZ**  
STRAUS BUILDING  
CHICAGO

# AMERICAN PASSION PLAY

DELMAR D. DARRAH  
PRODUCER & DIRECTOR



April 16  
April 23  
April 30  
May 7



Deluxe Presentation  
Sunday May 14

16TH ANNUAL SEASON

## Scottish Rite Temple

Tickets on Sale at Scottish Rite Temple  
and United Photo Shop

May 13  
May 14  
May 21  
May 28



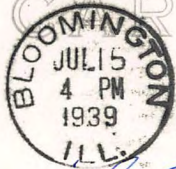
This Verifies Your Reception of  
**THE AMERICAN PASSION PLAY**

**May 10<sup>th</sup> 1939**  
**OVER WJBC and WAAO**  
and Dedicated to the **IDA**



POST CARD

CORRESPONDENCE

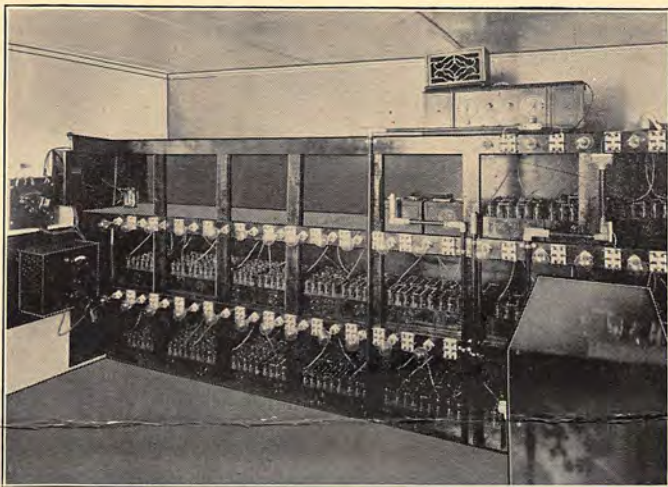


ADDRESS



Mr. David F. Thomas  
Proctorville;  
Ohio

## FACTS ABOUT RADIO STATION WJBL



There are no moving parts in the operating room of Radio Station WJBL. The Willard batteries shown above furnish all the power. The battery installation includes 1250 glass jars or "cells", each of which delivers 2 of the 2500 volts required.

### Interesting Facts

—Station WJBL was assembled in Decatur by two Decatur men, Mark L. Spies and Herbert Rickards. Mr. Rickards is now the station announcer, and Mr. Spies is the station operator.

—The steel towers, from which the aerial is suspended, are among the first things noticed by visitors to Decatur. They rise 96 feet above the roof of the Gushard building and 192 feet above the level of the street.

—More than a mile of enamel covered copper wire was used in the aerial and in the net work of wires which spread out over the building to fashion the "counter-poise" or ground.

—The station broadcasts on a wave length of 270 meters, or 1111 kilocycles, and its nominal range is one thousand miles, but reports of clear reception have been received from radio listeners living more than fifteen hundred miles away.

### On Air Three Nights Each Week

—At present, station WJBL broadcasts three nights each week

—Monday, Wednesday and Saturday, from 9:30 until 11:00 o'clock. The programs, which are varied in character, usually include many musical numbers, popular and classical, instrumental and vocal, played or sung by popular artists and organizations of Decatur and its vicinity. Special requests are always welcomed, and complied with if possible.

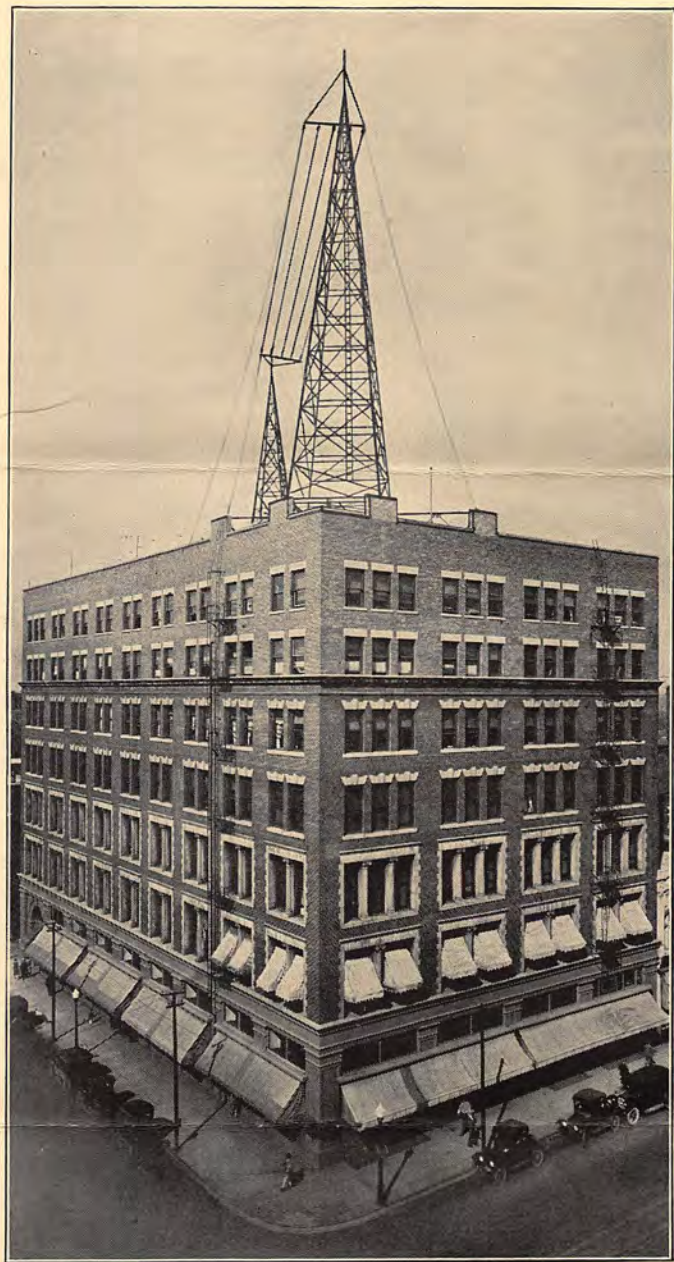
### Tune in on the Millikin

### "Hour of Music" Every Wednesday Night

—One of the most interesting and enjoyable weekly features of Station WJBL is the Millikin "Hour of Music" broadcast every Wednesday night from 9:30 to 11:00, with vocalists and instrumentalists from the James Millikin University Conservatory of Music in diversified programs that prove entertaining to all listeners who like popular and classic music.

STATION WJBL IS OWNED AND OPERATED BY

**WILLIAM GUSHARD COMPANY**  
"DECATUR'S GREATEST STORE"



This view, taken from the southeast, pictures the seven-story Gushard building at Water and William Streets, with the twin towers or "masts" of steel from which the aerial wires of Radio Station WJBL are suspended. They rise 96 feet above the building and 192 feet above the street. The five-strand aerial swings in the air between them.

FROM STUDIO TO LOUD SPEAKER, VIA  
**RADIO STATION WJBL**  
OWNED AND OPERATED BY  
**WILLIAM GUSHARD COMPANY**  
"DECATUR'S GREATEST STORE"



*The Studio, Radio Station WJBL, with announcer Rickards at the control desk and Earl Voyles at the Baldwin grand piano. Two microphones are used, one for announcements, the other for programs. The picture shows the draperies and the ceiling canopy which make the room sound-proof.*

### *From Studio to Loud Speaker*

**A**N extremely busy place when the station is "on the air", is the studio of WJBL, high up on the top floor of the Gushard building. To reach it one must go through a reception room, fitted with chairs, a desk, and several telephones, which seem to be in constant use receiving requests for popular numbers. From this room one may look through a long window of plate glass, thick and almost entirely sound proof, into the studio proper.

A thick grey carpet covers the studio floor, the walls are covered by heavy draperies of blue velvet, and a canopy of heavy cloth hides the ceiling. The room is reverberation proof and acoustically "dead". A grand piano occupies one end of the room; at the other end is the announcer's desk and microphone and the microphone control switch. The program microphone stands upon a mahogany pedestal which may be moved to any desired point.

Now let us suppose that the station is "on the air", with the announcer at his desk and Earl Voyles at the piano, and follow the sound from the moment it is made until it reaches the aerial and goes out into the ether.

STATION WJBL IS OWNED AND OPERATED BY  
**WILLIAM GUSHARD COMPANY**  
"DECATUR'S GREATEST STORE"



*This interesting picture shows part of the WJBL operating room on top of the Gushard building, with the station in operation. Operator Mark L. Spies is shown "listening in" with a pair of head-phones. The sensitive controller set with its several dials is in front of the operator.*

### *The Novel Journey of a Sound*

**T**HE station operator has opened the station, and the announcer, having announced the station, the player, and the first number, shuts off his own microphone, switches the power to the program microphone, signals to the pianist, and the sound of music suddenly fills the studio.

The sensitive microphone catches every sound, and conveys it, through solid copper wire placed in special conduits, to the speech amplifier, in the operating room on the roof, which magnifies it 100,000 times before sending it on to the power amplifier, where it is further increased to 250,000 times its original volume. It then goes through the four 250 watt tubes of the powerful transmitter to the aerial wires high above the ground, there to start on its mysterious journey through the air in "waves" of a length determined by the power of the sending station, which must always broadcast on the exact wave length allotted by the government radio bureau.

Once "on the air", the sound which started in the studio travels with the speed of light, to be caught and reproduced by the receiving sets of listeners far and near.

STATION WJBL IS OWNED AND OPERATED BY  
**WILLIAM GUSHARD COMPANY**  
"DECATUR'S GREATEST STORE"

339.

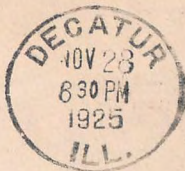
WJBL

529.7

RETURN IN 5 DAYS TO

**WM. GUSHARD**  
**DRY GOODS COMPANY**

DECATUR, ILLINOIS.



David F. Thomas,

Proctorville, Ohio.

# W J B T — CHICAGO, U. S. A.

389.4 METERS

500-5000 WATTS

770 KC.

Your letter, commenting on our program has been received, and your report checks with our broadcast of that date. We sincerely thank you for writing and assure you that we appreciate the interest you have shown in our station. The W J B T program policy is based on the comments from our listeners. Write in so that you may be influential in determining the programs that we present.

## REGULAR **W J B T** SCHEDULE

*DAILY (Except Sunday)*

11 a. m.-11:30 a. m.

3-4 p. m.

5-7 p. m.

11 p. m.-12 m.

*MIDNIGHT PROGRAMS*

Tuesday and Thursday, 12-2

*SUNDAY*

10:30 a. m.-12:30 p. m.

2 p. m.-12 m.



637

LET'S GO  
CITIZENS' MILITARY  
TRAINING CAMPS



THIS SIDE OF CARD IS FOR ADDRESS

Mr. David F. Thomas

Proctorville, Ohio.

**Supreme Dictator**  
WILLARD A. MARAKLE  
Rochester, N. Y.

**Past Supreme Dictator**  
FRANK J. MONAHAN  
San Francisco, Calif.

**General Dictator**  
GEORGE N. WARDE  
Mooseheart, Ill.

**Supreme Vice Dictator**  
J. ALBERT CASSEY  
Baltimore, Md.

**Supreme Prelate**  
NORMAN G. HEYD  
Toronto, Canada

**Supreme Treasurer**  
HARRY W. MACE  
Philadelphia, Pa.

**Supreme Sergeant-at-Arms**  
WILLIAM H. NAST  
Long Island City, N. Y.

**Supreme Inner Guard**  
WM. F. TANNHAUSER  
Milwaukee, Wis.

**Supreme Outer Guard**  
HAROLD H. PARSONS  
Gloucester, Mass.

**Supreme Trustees**  
A. L. RAFTER Toledo, Ohio  
AL. J. SARTORI Spokane, Wash.  
DR. J. C. IRVINE Denver, Colo.

Director-General, JAMES J. DAVIS, P.S.D., Pittsburgh, Pa.  
Chairman Board of Mooseheart Governors

**SUPREME LODGE OF THE WORLD**  
**LOYAL ORDER OF MOOSE**  
PURITY - AID - PROGRESS

**Executive Committee**

JOHN W. FORD, P.S.D., Chairman, Philadelphia, Pa. E. J. HENNING, P.S.D., San Diego, Calif.  
RALPH W. E. DONGES, P.S.D., Camden, N. J.

**Mooseheart Governors**

JOHN J. LENTZ  
Columbus, Ohio  
RALPH W. E. DONGES, P.S.D.  
Camden, N. J.  
JOHN W. FORD, P.S.D.  
Philadelphia, Pa.  
ARTHUR CAPPER  
Topeka, Kans.



**Mooseheart Governors**

ALBERT BUSHNELL HART  
Cambridge, Mass.  
E. J. HENNING, P.S.D.  
San Diego, Calif.  
RODNEY H. BRANDON, P.S.D.  
Secretary  
Mooseheart, Ill.  
MATTHEW P. ADAMS, Supt.  
Mooseheart, Ill.

**OFFICE OF**

**RODNEY H. BRANDON**  
**SUPREME SECRETARY**  
**MOOSEHEART, ILL.**

File No. ....

**Supreme Secretary**  
RODNEY H. BRANDON  
P.S.D. Mooseheart, Ill.

**Supreme Council**  
JOSEPH G. ARMSTRONG  
P.S.D. Pittsburgh, Pa.  
WM. F. BROENING  
P.S.D. Baltimore, Md.  
C. A. A. McGEE, P.S.D.  
Oakland, Calif.  
DARTUS A. BROWN  
P.S.D. Kansas City, Mo.  
JOHN W. FORD P.S.D.  
Philadelphia, Pa.  
W. A. MCGOWAN  
Kansas City, Mo.  
ANTONIO P. ENTENZA  
Detroit, Mich.  
E. M. STAFFORD  
New Orleans, La.

**Supreme Forum**  
Chief Justice  
ALBERT H. LADNER, JR.  
Philadelphia, Pa.  
Associate Justices  
EDWARD L. BRADLEY  
Omaha, Neb.  
CLAUDE GRAYSON  
Mobile, Ala.  
J. EDWARD KEATING  
San Diego, Calif.  
ROY WILLIAMS  
Sandusky, Ohio

**Supreme Lecturer**  
WM. TRICKETT GILES  
Baltimore, Md.

October 23, 1924

Dear Sir:

We certainly appreciate your courtesy in writing us concerning your reception of our broadcasting the other night. Inasmuch as we are just beginning our career on the air, letters like yours are greatly appreciated and a great help to us.

We are glad to say that our tests brought in a large quantity of mail but regret that it is necessary to acknowledge communications by this form letter. We would like to answer each letter personally, but the volume of the correspondence will not permit it.

We appreciate your writing us and hope that you will feel free to offer any suggestions concerning our programs any time you hear our 500 watt station which is operating on 278 meters.

We are planning a folder containing complete information concerning the station and will be pleased to send you one when it is issued.

Thank you again.

Yours truly,

*Jack Nelson*  
DIRECTOR OF STATION W J J D

JN:JS

RETURN AFTER FIVE DAYS TO



RODNEY H. BRANDON  
SUPREME SECRETARY  
LOYAL ORDER OF MOOSE  
MOOSEHEART, ILL.



110



David F. Thomas  
Proctorville, Ohio





SEARS - ROEBUCK  
AGRICULTURAL FOUNDATION  
CHICAGO

June 11, 1924.

Mr. David F. Thomas,  
Proctorville,  
Ohio.

Dear Mr. Thomas:

We appreciate your good report relative to our radio programs, as we are always glad to hear from our large and rapidly growing family of listeners.

If, at any time, you have any ideas or suggestions for the improvement of W-L-S programs, we shall be glad to have you write us.

W-L-S is a 500-watt station, operating on 345 meter wave length. We have two studios - one located in the Sherman Hotel and the other in our tower. The transmitting apparatus is also in the Sears-Roebuck tower.

Thanking you for the interest shown.

Very truly yours,

Sears-Roebuck  
RADIO STATION W-L-S

*Edgar L. Bill*  
Edgar L. Bill - Director.

32



Mr. David F. Thomas,  
Proctorville,  
Ohio.

SEARS-ROEBUCK  
AGRICULTURAL FOUNDATION  
CHICAGO



Sears  
Roebuck  
Agricultural  
Foundation  
Chicago

Dec. 17,  
1925

Mr. David F. Thomas,  
Proctorville,  
Ohio.

Dear Mr. Thomas:

Your letter of appreciation of our programs received and very welcome indeed.

Glad you enjoyed the Bohemian Orphanage Band and their selections as they have been a source of great pleasure to us as well as our listeners and we hope to have them with us again.

Thank you for your kind words and hope to hear from you again.

Gratefully yours,

Sears-Roebuck  
RADIO STATION W-L-S

*E. L. Bill*  
Edgar E. Bill-Director

ELB/MP

361

*WLS*

BROADCASTING STATION  
SEARS, ROEBUCK AND CO.

*Chicago*

E9120



549



Mr. David F. Thomas,  
Proctorville,  
Ohio.

THE  
CHICAGO DAILY NEWS  
EDITORIAL ROOMS

FORM 1675

July 28, 1925

Mr. David F. Thomas,  
Proctorville, Ohio.

Dear Mr. Thomas:

We do send EKKO stamps and upon receipt of ten cents and proof that you heard our station (mention a definite number and time) we will be glad to send you one.

Very truly yours,

*Judith C. Waller*

Director W M A Q.

SB -

EB

239  
THE CHICAGO DAILY NEWS.



Mr. David F. Thomas,  
Proctorville, Ohio.

ADDRESS  
YOUR WANT-AD  
TO  
THE DAILY NEWS  
15 N. WELLS ST.

THE DAILY NEWS  
IS CHICAGO'S  
WANT-AD  
DIRECTORY

BROADCASTING STATION

J. BODEWALT LAMPE  
DIRECTOR  
CLYDE HAGER  
ANNOUNCER-MANAGER



OPERATED IN CONJUNCTION  
WITH THE AMERICAN BOND  
AND MORTGAGE COMPANY

**TRIANON**  
THE WORLDS MOST BEAUTIFUL BALLROOM  
COTTAGE GROVE AVENUE  
AT SIXTY SECOND STREET  
CHICAGO

April 27, 1925

Mr. David F. Thomas,  
Proctorville,  
Ohio.

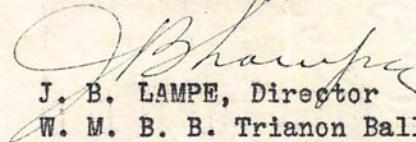
Dear Friend:

We were delighted to receive your message expressing your appreciation of our program and hope that we may deserve your further approval.

We are just beginning and we will say that you will find our programs improve as we go along. We are endeavoring to send out popular music and entertainment of the highest class by exclusive artists. It is our aim to satisfy and please the radio public with a diversified and carefully selected program and it is gratifying to receive letters indicating that our efforts are being met with utmost approval by all those who listen in on Station W.M.B.B.

Thanking you for your very kind message, we remain

Yours sincerely,

  
J. B. LAMPE, Director  
W. M. B. B. Trianon Ballroom

M



143

331

BROADCASTING STATION

**WM**  **BB**

**TRIANON**

THE WORLDS MOST BEAUTIFUL BALLROOM  
COTTAGE GROVE AVENUE  
AT SIXTY SECOND STREET  
CHICAGO



LET'S GO  
CITIZENS' MILITARY  
TRAINING CAMPS



Mr. David F. Thomas,  
Proctorville,  
Ohio.

RADIOCASTING STATION

J. BODEWALT LAMPE  
DIRECTOR

MIDWAY 2420



TRIANON

THE WORLDS MOST BEAUTIFUL BALLROOM  
COTTAGE GROVE AVENUE  
AT SIXTY SECOND STREET  
CHICAGO

Oct. 27, 1927.

Mr. D.F. Thomas,  
1527 W. 1st Ave.,  
Columbus, Ohio.

Dear Mr. Thomas:-

Your card of the 23rd at hand commenting on the music by the Trianon Ensemble and Cello Solo "Moonlight and Roses" and wish to thank you very much for same and for your information.

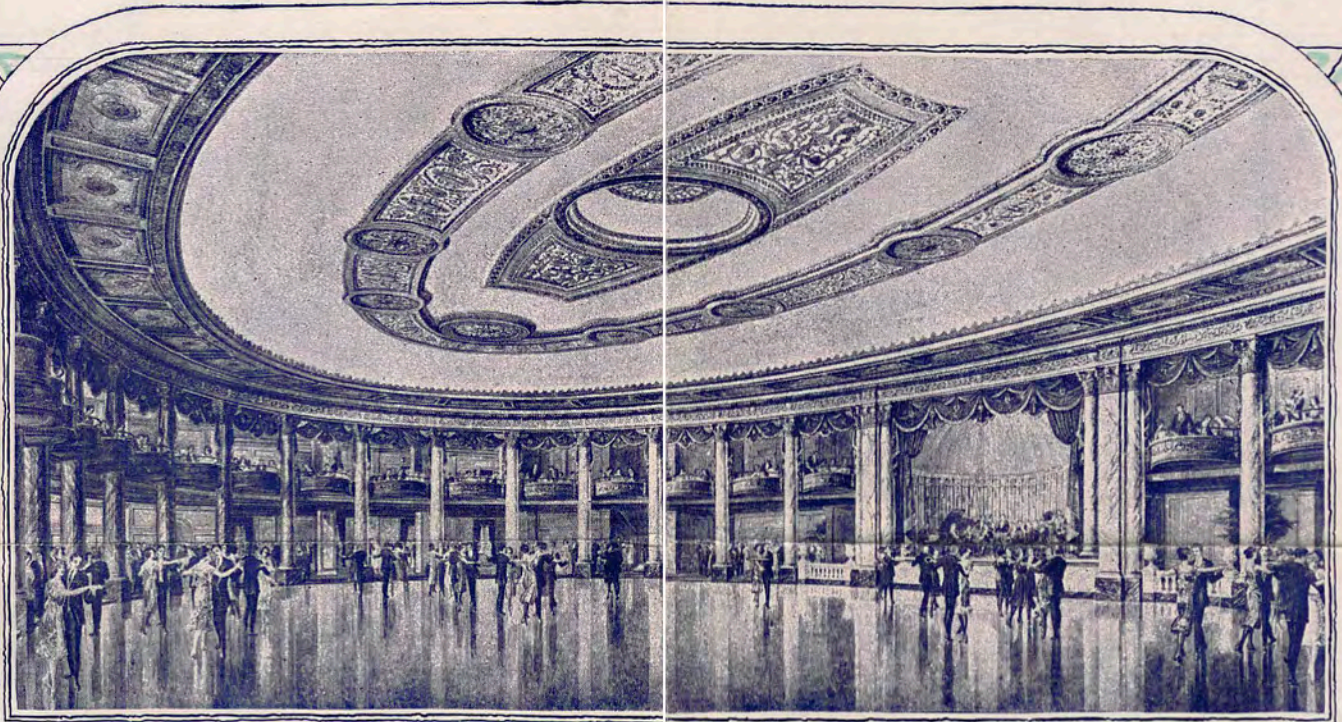
Our hours are as follows: 6.00 to 9.30 every evening, except Monday. From 9.30 to 12.30 P.M. we share time with our sister station W.O.K.

Please listen in often and let us hear from you again.

Yours very truly, .

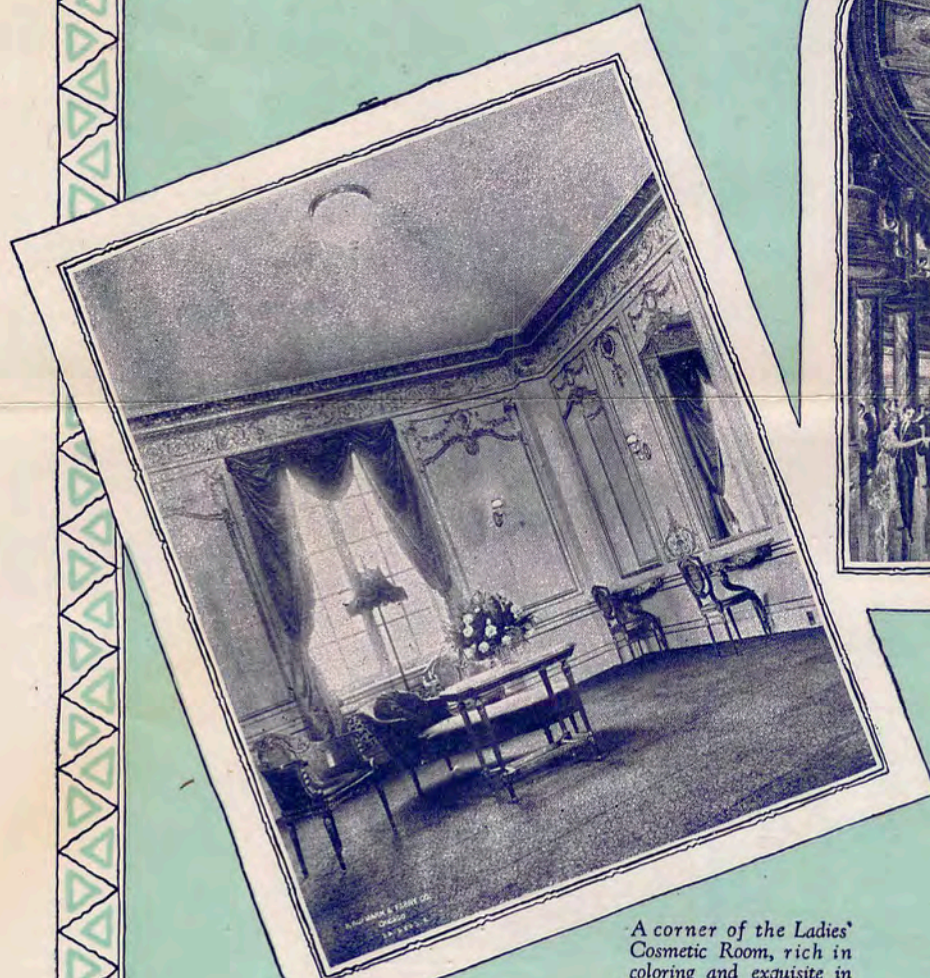
PG/EM

  
PRESTON GRAVES, Manager

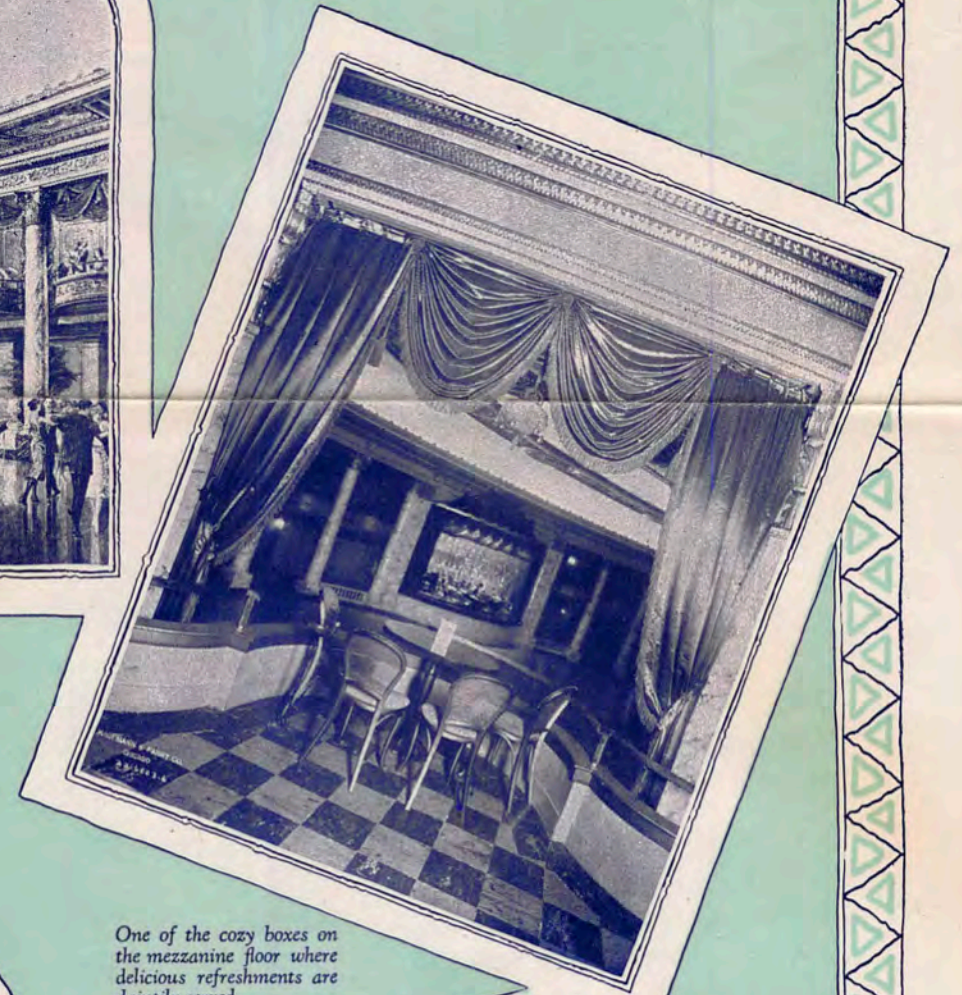


**“TRIANON”**

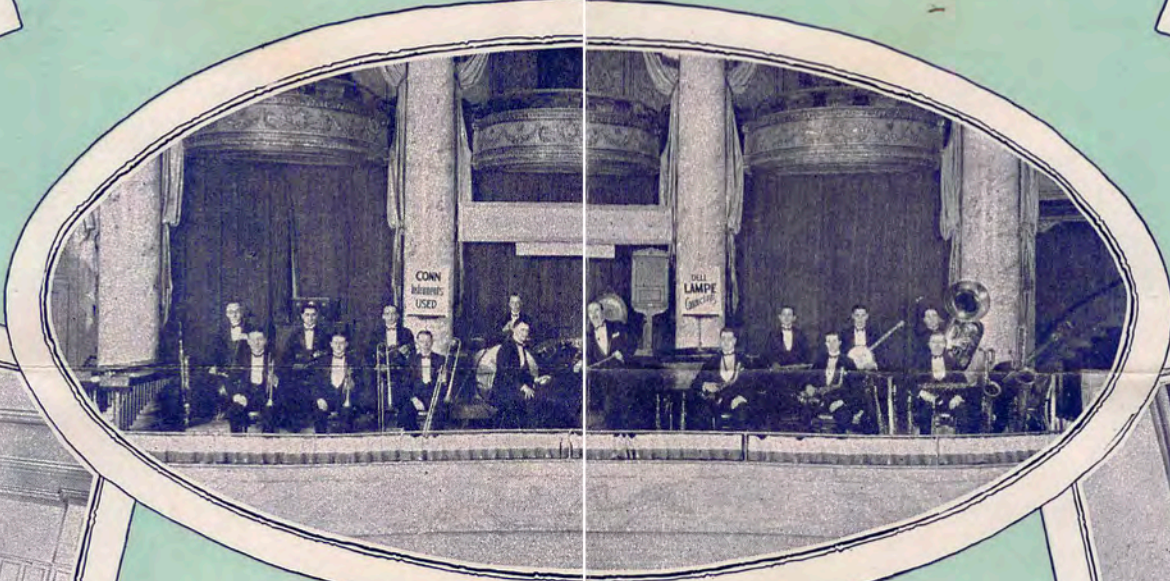
Truly the “World’s Most Beautiful Ballroom,” a million dollar palace devoted exclusively to lovers of refined dance atmosphere. Accommodates comfortably over three thousand couples.



A corner of the Ladies’ Cosmetic Room, rich in coloring and exquisite in furnishings.



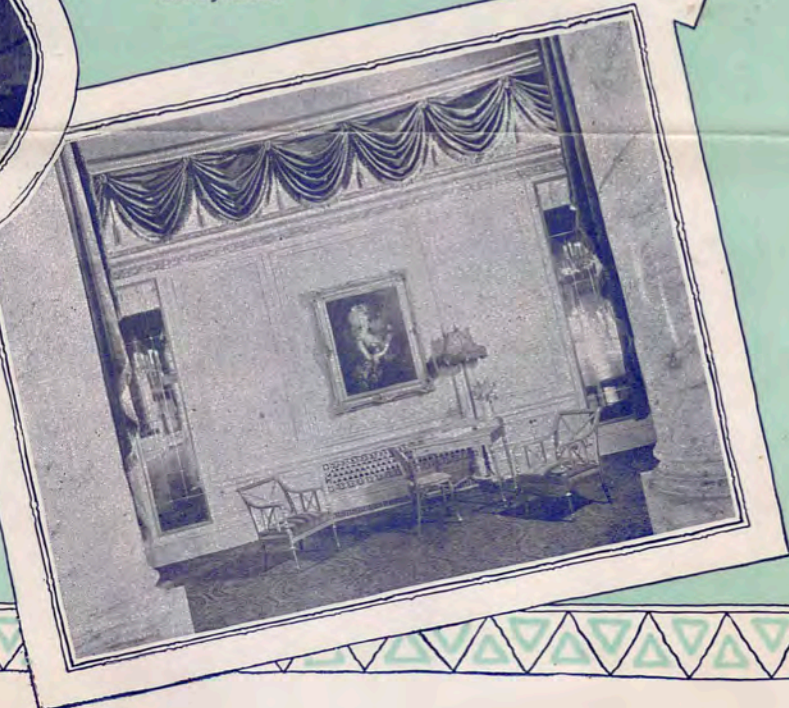
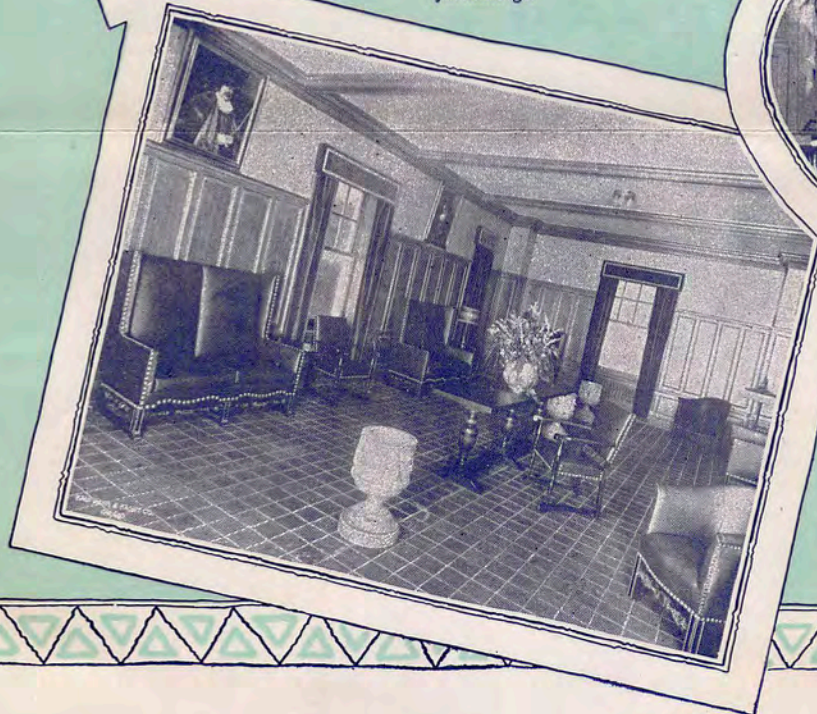
One of the cozy boxes on the mezzanine floor where delicious refreshments are daintily served.

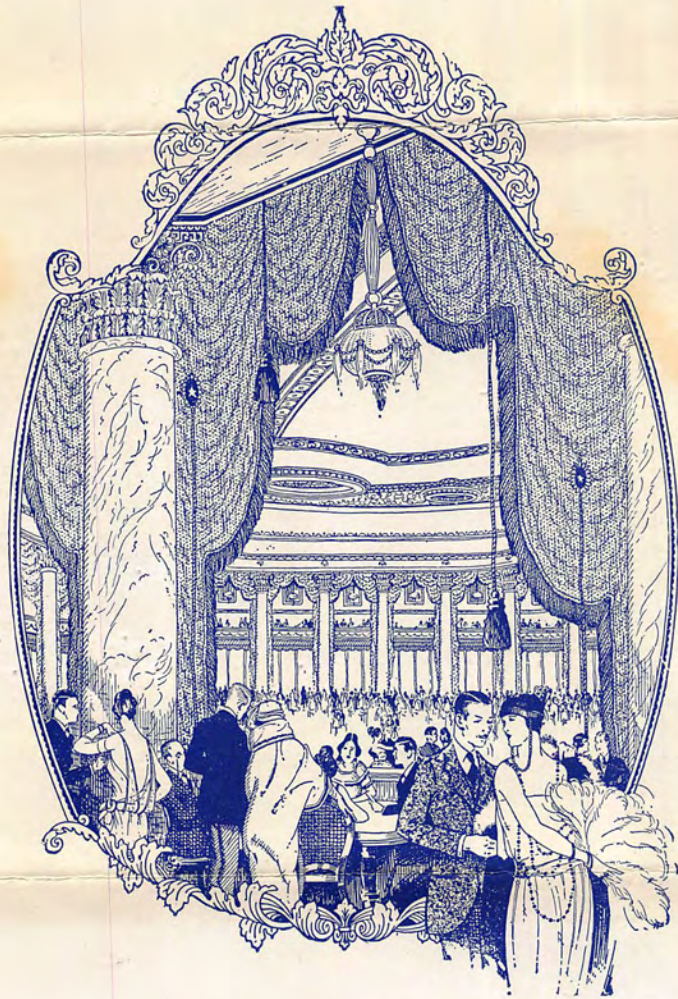


**“America’s Finest Dance Music”**  
**TRIANON ORCHESTRA**  
 J. BODEWALT LAMPE, DIRECTOR  
 DELL LAMPE, CONDUCTOR

Comfortable chairs and sofas make the Men’s Smoking Lounge an alluring spot for the in-between moments.

A view of the colonnade and hostess desk where a gracious hostess will always be found at your service.





**WM**  **BB**

TRIANON

THE WORLD'S MOST BEAUTIFUL BALLROOM

COTTAGE GROVE AVENUE  
AT SIXTY SECOND STREET

CHICAGO



Mr. D.F. Thomas,

1527 W. 1st Ave.,

Columbus, Ohio

STUDIOS { ADAMS MUSIC HOUSE  
MAYER HOTEL

TRANSMITTING STATION  
GRAND VIEW DRIVE

RADIO STATION

WORLD'S MOST BEAUTIFUL DRIVE  
**W M B D**

GENERAL OFFICES:  
116 So. Adams St.  
Phone 4-6900

CHAS. C. ADAMS, Lessee

AT  
PEORIA, ILLINOIS

February 8th, 1929.

David F. Thomas,  
Proctorville,  
Ohio.

Dear Mr. Thomas:

Please accept our thanks for your favor of the 3rd. We are glad to be able to verify the hour and program you heard broadcast from this station on February 2nd.

We are on the air afternoons from four to seven o'clock and evenings eight thirty to eleven o'clock, with a Midnight Frolic on each Saturday running to one or two o'clock Sunday morning (Central Standard time).

Please feel at liberty to inform us at any time how our program is coming through and do not hesitate to offer any suggestions for improvement.

Yours very truly,  
STATION W. M. B. D.

FH:JR

*A. Hayslip*  
Director of Station.

P.S. - Please listen in about 12:30 A.M. (C.S.T.) Feb. 17th when we will announce your letter.

WE MULTIPLY BUYER DEMAND

RADIO STATION

**W M B D**  
WORLD'S MOST BEAUTIFUL RIVER

AT  
PEORIA, ILLINOIS



652  
SOUTH ADAMS  
STREET STATION



David F. Thomas,  
Proctorville,  
Ohio.

# Neutrowound Radio Mfg. Co.

Radio Division of

Advance Automobile Accessories Corp.

MANUFACTURERS



TEXTILE MILL - EAST ROCHESTER

EXECUTIVE OFFICES  
1721 PRAIRIE AVENUE  
CHICAGO

ALL CORRESPONDENCE AND TELEGRAMS  
1721 PRAIRIE AVENUE, CHICAGO  
ALL SHIPMENTS - PARCEL POST, EXPRESS AND FREIGHT  
HOMWOOD, ILL.



METAL PARTS PLANT - HOMEWOOD

Dave F. Thomas  
Proctorville, Ohio

Dear Sir;

We very much appreciate your communication of recent date telling us of your reception of W O K.


It is a pleasure to us to know that our programs are affording you enjoyment. Any criticisms or suggestions you may care to offer for their improvement will be gratefully received, as our aim is to provide entertainment which will thoroughly please our steadily growing group of "regular listeners".

We are on the air regularly from 12 o'clock noon to 2 P.M., from 5:30 to 7 P.M., and from 10 P.M. to 1 A.M., except Sunday and Monday. Sunday schedule: 1 A.M. to 2 A.M., and 6:30 to 8:30 P.M., Monday schedule: 12 noon to 2 P.M., and 6 P.M. to 1 A.M. All schedules are central standard time.

We are sending under separate cover, our souvenir booklet, giving you, in detail, all the facts about W O K. We hope you enjoy reading it, and again thank you for your courtesy in writing us.

Very truly yours,

Broadcasting Station W O K

  
Director and Chief Announcer

GWA\*D



# Instructions for Using "Proof of Reception" Card

Remember that the station must be convinced that you have actually heard their broadcasting. Comments of the Announcer or the mention of some particular identifying incident that occurred during the number are, perhaps, the best proof of this. The exact time that a particular number began or ended or the sequence of numbers are other proofs.

Fill out all the blanks on the card and take care that your name and address are plainly written where they belong and that a dime is inserted. Then put the card in an envelope addressed to the broadcasting station you heard. A list of addresses of broadcasting stations is included in your **ekko** stamp album.

---

My Name

---

City

---

State

---

Street and Number

On \_\_\_\_\_ at \_\_\_\_\_ I heard your station \_\_\_\_\_  
*Date (Day and Month)*      *Time (A. M. or P. M.)*      *Call letters*

broadcasting the following: \_\_\_\_\_  
\_\_\_\_\_  
\_\_\_\_\_  
\_\_\_\_\_  
\_\_\_\_\_

Please send me one **ekko** stamp of your station. Enclosed find ten cents to cover cost of mailing and verifying.

Be sure your name and address are PLAINLY marked above.

At what hours do you use  
your radio most?

- \_\_\_\_\_
- Orchestra classical
- Orchestra jazz
- Songs classical
- Songs popular

- \_\_\_\_\_
- Lectures
- Politics
- Sports
- Theatrical Productions

The broadcasting station will appreciate your filling in the above as well as listing, in the order in which you prefer them the following kinds of broadcasting:

My set is:  Crystal  
 Tube  
(No. of Tubes)

Type of Circuit \_\_\_\_\_

Name of Mfr. \_\_\_\_\_

## Proof of Reception Card

This card is supplied for your convenience in communicating with the broadcasting station to procure an **ekko** stamp supplied by that station.

It is necessary that definite information, other than that appearing in public print, be given to determine the authenticity of your claim.

## Neutrowound-Straight Line Frequency-Variable Condensers

Three Variable condensers are employed in the Neutrowound Receiver, for the purpose of tuning the receiving circuit, to any desired wave length or station—or from one station to another. These condensers are of the low-loss type, which insures sharper tuning and greater receiving efficiency. But the big and important feature of the Neutrowound Straight Line Frequency Variable Condenser is that it is a new idea in variable condenser construction. It is designed especially to give a similar change in frequency, in relation to the dial movement, throughout its entire scale. Therefore, with the new Neutrowound Straight Line Frequency Variable Condenser, all stations as tuned on the dials, are an equal distance apart, throughout the entire scale.

There is no crowding of stations on the lower range with this method, and it is possible to tune right on down to 200 meters, with ideal tuning conditions.

There is at least one station to be found, every one and one-quarter degrees on the dials. The separation is the same throughout—and there are no stations in between. *Therefore, you hear them all—but just one at a time.*

## A Year in Advance

In the Neutrowound you will find that perfect balance between selectivity and volume, which is necessary to meet the various radio conditions—extreme selectivity, to enable to you to “cut through” powerful local stations, for the distant ones, or to separate two distant stations using nearly the same wave-length—and volume, from distant stations—perfect audition, under absolute control—the subdued, sweet music of an orchestra far away—or concert volume, loud enough so that your family and friends can all enjoy the programmes broadcast from distant stations. Voice or violin, organ, piano or orchestra, eloquent oratory, bedtime stories and the swelling chorus of famous choirs in distant cities are all reproduced faithfully and naturally, by the responsive Neutrowound Radio Receiving Set.

You can hear the world's greatest men speak, as clearly as if you stood before them. Famous musicians entertain you with tones so clear and true that you feel as if you were listening near them. In your own home—you can “tune in” and listen to the greatest orators, singers, musicians and orchestras in the United States.

## It Prevents and Controls Oscillations

The absolute peak of amplification in any radio-frequency amplifier, *occurs only, and always*, just before it enters an oscillating condition—just before the set starts to “whistle.” The distant signals always come in loudest, as the radio-frequency rheostat is tuned up to a point, just before the set starts to “whistle.” Therefore the only ideal receiving set is one that can be made to oscillate on all waves, and yet have the tendency to oscillate under such perfect control, that the entire receiving circuit may be brought—steadily and slowly—to the condition just below that where it oscillates. Then you have the peak of radio-frequency amplification in a stable, distance getting condition.

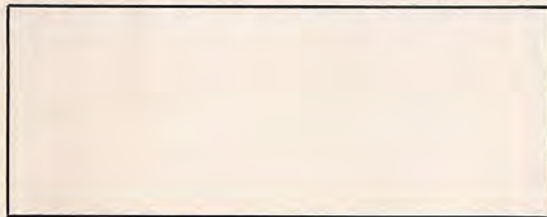
The method of control perfected in the Neutrowound Radio Receiver, differs radically from all others.

First:—It is not a “Losser.” It is a quiet, practical, slowly progressive, advancing control of the amount of energy in the plate circuit of the two radio-frequency stages. Instead of permitting the energy in the plate circuits to build up to an excessive condition—the Neutrowound method prevents it from ever being generated, at any of the various waves, to such an extent as to create oscillations, but rather makes it possible to operate the receiving set, under ideal conditions—just below the oscillation point. Thus you secure the very peak of radio-frequency amplification—at all wave lengths—without shrill noises or distortions.

## NEUTROWOUND RADIO MFG. CO.

1721 Prairie Avenue

Chicago, Illinois



# The Greatest Advance Ever Made In Radio



## A New Principle That Has Revolutionized Radio

The discovery—at our laboratory in Chicago—of the entirely new Neutrowound principle, created a sensation among Radio Engineers throughout the world.

The application of this new principle makes it possible to obtain perfect reproduction of voice or music, without the slightest howl, noise or distortion.

This new principle—incorporated in the Neutrowound Radio Receiving Set provides maximum selectivity with no sacrifice of volume—enabling the operator to “tune in” distant stations as easily as those nearby—with the same volume, richness of tone—and with entire freedom from the usual howls and squeals, thus assuring consistent reception of distant stations the year round. The accomplishment of this result has been the goal of all radio engineers, ever since the inception of tuned radio frequency amplification.

The Neutrowound principle is entirely new, and has never before been applied in the construction of any radio receiving set. It eliminates the necessity of making adjustments for capacity couplings—no neutralization—no tedious corrections for tube capacity—no critical points on filament controls.

## All Metal Case Shields Against Outside Interference

The Neutrowound is the first receiving set ever made with an all-metal case. Radio engineers have endeavored to apply the shielding principle without obtaining satisfactory results. Our engineers have developed and perfected this principle, so that the all-metal case not only serves as a sturdy protection for the vital parts of the receiving set, but also acts as an electro-magnetic shielding against outside interference.

## Concert Volume on Distant Stations

Comparative tests in New York and Chicago demonstrated that the Neutrowound brought in distant stations—with concert volume and perfect reproduction—that could not be reached by other receiving sets which cost several times as much. Similar tests have been made in other sections of the country and in every case, the Neutrowound has demonstrated its superiority in every comparative test of efficiency.

## It Is Extremely Selective

The Neutrowound was perfected in our own laboratory in Chicago, and for many months—distant stations have been tuned in—*right through the 14 powerful Chicago Stations*—without any interference. The Neutrowound will give the Radio Fan everything that he wants—from the softest, sweetest music to the loudest volume, with extreme selectivity.

## The Neutrostat

The Neutrostat—recently perfected in our laboratory—and used exclusively in the Neutrowound Radio Receiving Set—actually makes it possible to “build up” the strength of any signal, having sufficient intensity to be detected, to such proportions as to equal that of local reception.

The Neutrostat marks one of the greatest advances that has ever been made in radio engineering. This unit—varies the effective plate potential which governs the output energy, and makes it possible to obtain the ultimate radio amplification—consistent distant reception—unusual selectivity—clarity and volume—all far beyond anything that has ever been obtained heretofore, by any receiving instrument.

## Neutrowound-Audio-Frequency-Amplifiers

Three stages of audio-amplification are successfully employed in the Neutrowound Receiving Set to give absolutely perfect, solid, audio volume—a volume that makes the very air vibrate in a full toned, resonant manner. There is volume to spare on most all reception—yet it can be modulated to a whisper.

## It Is Easy to Operate

Just set the three Tuning Dials—at the station you want—and *there it is*. Distant stations come in with concert volume. Those who have never operated a Radio before have tuned in distant stations, the first night that the set was installed in their homes. Our engineers have simplified and perfected the Neutrowound Receiving Set, and have produced a precision instrument—of the finest quality—which is so easy to operate, that anyone who reads the simple instructions, can “listen in” to broadcasting stations from far or near—at will.

## Only One Model

The Neutrowound Radio Receiving Set is furnished in but one model—a precision instrument of the finest quality, handsomely finished in crystalline black and nickel. In this one model is contained *all* the “Radio” it is possible to buy at *any* price. There are, today, radio sets on the market selling for five times the price of the Neutrowound—and yet, the Neutrowound, in an evening’s time, will “tune” just as many stations, just as “distant” stations, and “tune” those stations just as loudly, and with just as beautiful tone qualities, as the most expensive set available today.

## Specifications

The Neutrowound employs six tubes—two as radio-frequency amplifiers providing “distance” and sharpness of tuning—one as a detector—and three as audio amplifiers, thereby insuring reserve volume at all times.

The circuit is neither the ordinary nor reflex type, but is a unique and practical innovation in radio engineering, as applied to balanced, tuned radio-frequency amplification.

The battery connections are simplified by the provision of a tracer cable.

The Neutrowound Radio Receiving Set is 34 inches long, by 9 inches wide, by 6 inches high. Net weight 23 pounds, shipping weight 36 pounds. Complete instructions come with each set.

**LIST PRICE, \$85.00 (Without tubes, batteries, etc.)**  
**West of Rockies, \$90.00                      In Canada, \$115.00**

# Neutrowound Model

OFF.

## Ionized Radio

Price . . . **\$85**

Without tubes, batteries, etc

West of Rockies, \$90.00

In Canada, \$115



Neutrowound Radio Receiving Sets are manufactured under our own patents and under a Reciprocal License from the Navy Department of the United States Government.

Station WOK

on 217.3 Meters

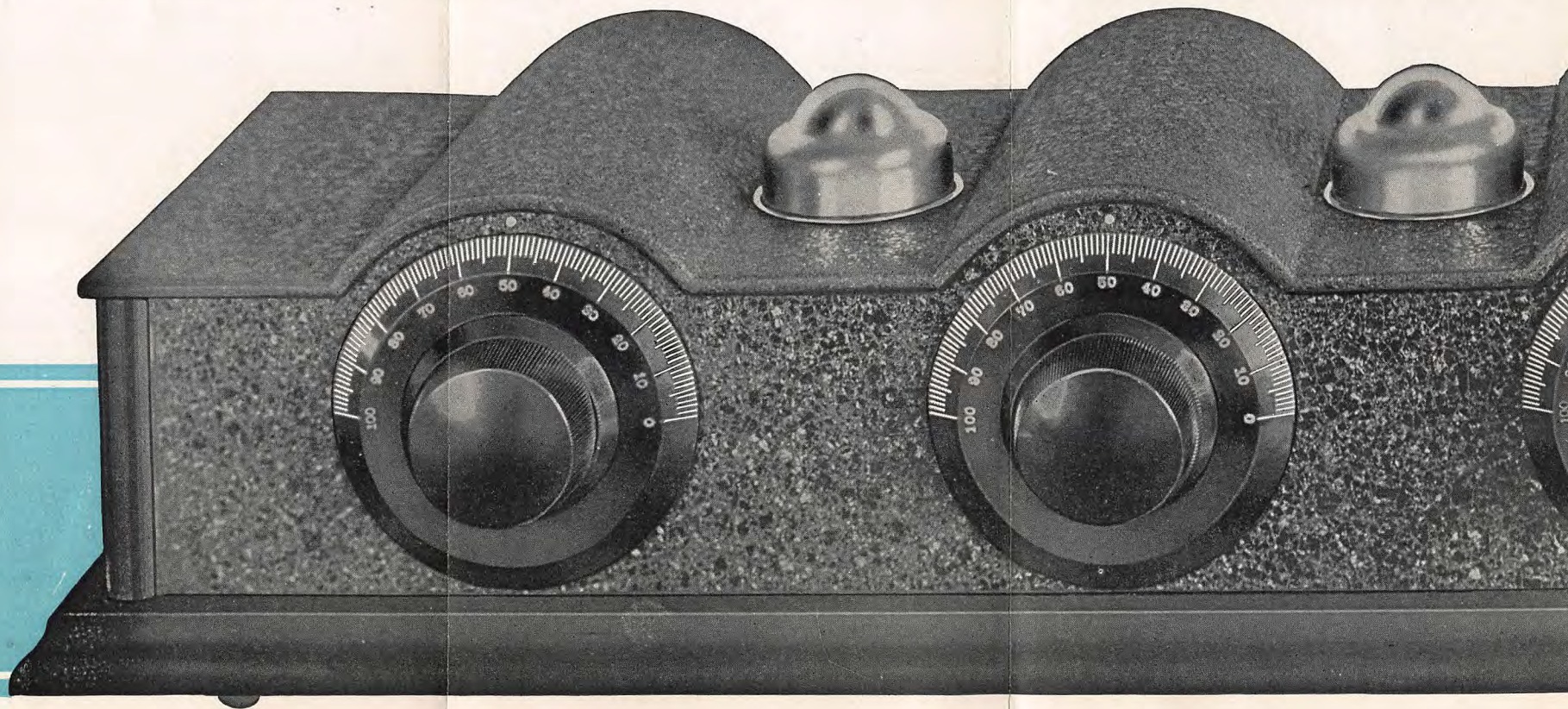
is owned and operated by Neutrowound Radio  
Mfg. Co. and is now broadcasting one of the  
best programs from Chicago.

1926

**Neutrowound**

REG. U.S. PAT.

*Has Revolutionary*



325

Broadcasting Station W O K  
Neutrowound Radio Manufacturing Co.  
Terrace Garden Studio, Morrison Hotel  
CHICAGO, U. S. A.

513



Dave F. Thomas  
Proco trville, Ohio

**D**EAR FRIEND: It is a pleasure to know that you have heard the radio broadcasting from Station WORD. Your response is appreciated by those who took part in the program.

Station WORD, broadcasting for the International Bible Students Association, is located at Batavia, Illinois. It is operated on a wave length of 275 meters, with a power of 500 watts.

We desire to keep in touch with the radio audience, and hope you will write us again. Friendly criticism and suggestions are welcomed.

---

WATCHTOWER  
Station WORD

---

*Programs*

Sunday	7.00 to 9.00
Monday	8.00 to 9.00
Tuesday	8.00 to 9.00 <sup>500w</sup>
Thursday	8.00 to 9.00

*Central Time*

---

*Official Address*

WEBSTER HOTEL  
CHICAGO, ILLINOIS

---



30.

218.



THIS SIDE OF CARD IS FOR ADDRESS

David F. Thomas  
Proctorville Ohio.

UNIVERSITY OF ILLINOIS  
ATHLETIC ASSOCIATION  
URBANA, ILLINOIS

L. M. TOBIN  
Editor *News Service*  
Room 200  
Men's Gymnasium

February 2, 1925.

Mr. David F. Thomas,  
Proctorville, Ohio.

Dear Mr. Thomas:

Thank you very much for your kind card of the 25. We certainly appreciate hearing from our listeners, and am glad you were able to get the game so plain and that you enjoyed it.

The following are the remaining home basketball games which we will broadcast:

February 12 - Illinois-Northwestern  
February 14 - Illinois-Chicago  
February 21 - Illinois-Wisconsin  
March 6 - Illinois-Purdue

February 28, we will broadcast the Illinois Relay Carnival results from our big armory.

All basketball games begin at 7:30 promptly, and the introduction begins at 7:15.

Again thanking you,

Sincerely,

WRM- University of Illinois  
Broadcasting Station,  
273 meters.

JHR.

44

WRM

*Return in 5 days to*

UNIVERSITY OF ILLINOIS  
ATHLETIC ASSOCIATION  
MEN'S GYMNASIUM  
URBANA  
ILL



232.



Mr. David F. Thomas,  
Proctorville,  
Ohio.

*Acknowledgement*  
*of Your Letter* \_\_\_\_\_

To Broadcasting Station

**WSBC Chicago**

**210 METERS**

*Thanks for the attention given our Station*

**World Battery Company**

Regular Broadcasting Hours 6:30 to 8:30 P.M. and 10:00 P.M. to 1:00 A.M. Daily

**World**  
STORAGE BATTERIES  
KDKA-WEAF-WGN-WJS-KHJ

# The Last Word

In Radio

# WORLD

## STORAGE-B-BATTERIES



12 Cells, 24 Volt Unit

Outside Measurements: 13 in. x 4 1/2 in. x 5 1/2 in.

Equipped with a SOLID RUBBER CASE

PRICE ..... \$ 3.50

96 Volt Unit..... 13.00

Old ideas of dry cell "B" Batteries are now swept aside by this new and superior WORLD Storage "B" Radio Battery. It is far more economical than dry cell batteries, may be recharged any number of times and will last indefinitely. To ten million homes with Radio Sets—and to countless millions of prospective buyers—this Storage "B" Radio Battery brings a new conception of battery economy and performance.

In fixing our price on this battery we have kept constantly in mind policies which have done so much to make the already famous WORLD Storage "A" Battery for Radio universally popular. By combining very carefully worked out production costs with the elimination of expensive credit systems we have been able to set our prices within reach of all WITHOUT SACRIFICING QUALITY! There is not another manufacturer in the country selling as high a quality storage battery at as low a figure.

WORLD Storage "B" Radio Batteries are Superior because:

Rubber Container prevents acid leakage.

Glass Jars prevent leakage of current and permit ready observation.

High milli ampere rating means infrequent recharging.

They hold charge and constant voltage even though left idle.

Their constant voltage means better results at all times and no deterioration.

Heavy rugged plates insuring long life and true performance.

### SPECIFICATIONS:

Built in units of 24 volts, which can be connected in series to get the voltage required by the set. Ordinarily four or five of these units are used. The individual units are a big advantage because the batteries can be arranged to fit in any cabinet. Four units in series will put 96 volts on the plates of the tubes and this potential is maintained at all times. The fact that the voltage is constant means better results from the set.

BATTERIES ARE SHIPPED DRY. When received, simply fill cells with Electrolyte—1,250 Specific Gravity Storage Battery Sulphuric Acid (H<sub>2</sub>SO<sub>4</sub>)—temperature not over 70 degrees F., so that the acid level is 1/4" below the lower edge of Rubber Cover. It is essential that 1,250 Specific Gravity Sulphuric Acid ONLY be used. Sufficient acid or Electrolyte of this gravity should be obtained to fill all cells. Slightly less than three pints are required for twelve cells. This Electrolyte may be secured at any Storage Battery Station.

YOU SAVE 50%—BUY A WORLD BATTERY NOW

WORLD Storage "B" Batteries have been tested and approved by the following leading authorities, in their own Engineering Laboratories, and have issued to us, under their Seal, Certificates of Approval:

Popular Radio Laboratories, Popular Science Institute of Standards, Radio News Laboratories, Lefax, Inc., Radio Broadcast Laboratories.

All of these representative institutions have pronounced the battery as mechanically perfect in every detail.

## World Battery Company

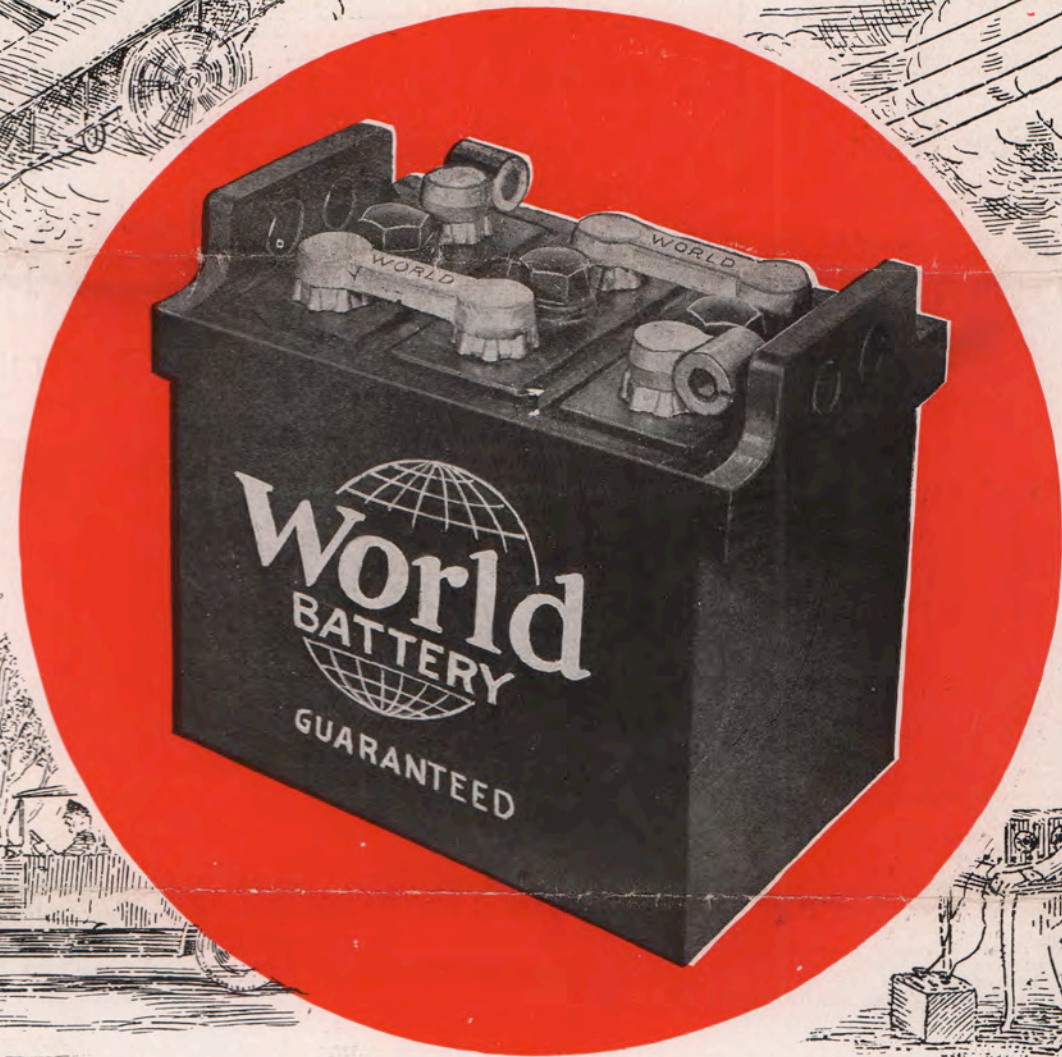
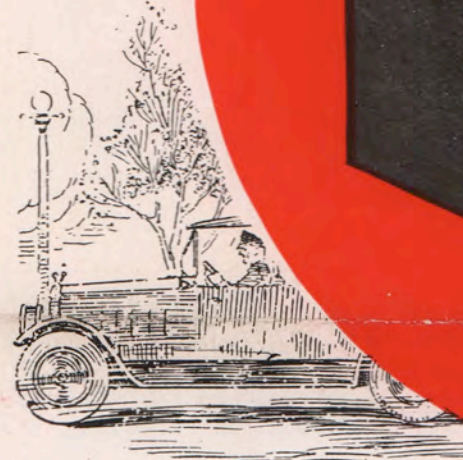
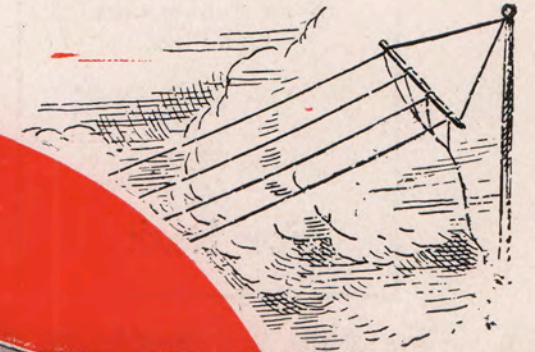
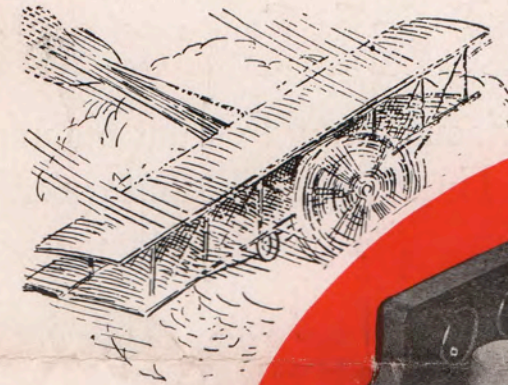
1219 S. Wabash Avenue

Chicago, Illinois

**World**  
STORAGE BATTERIES  
KDKA-WEAF-WGN-WJS-KHJ

**World**  
STORAGE BATTERIES  
KDKA-WEAF-WGN-WJS-KHJ

**World**  
STORAGE BATTERIES  
KDKA-WEAF-WGN-WJS-KHJ



## WORLD STORAGE BATTERIES SOLID RUBBERIZED CASE

—ONE PIECE—

The manufacturing and sales methods of the World Battery Company constitute the greatest forward step that has been made in the battery building business during the last ten years.

Through our experience with two retail stores and our plant in Chicago, we learned that it was possible to occupy space where overhead and rent were low and, through worth of product and judicious advertising, do a big volume of business at an extremely low cost.

Our production has grown so large in the last two years that we are now able to extend this service to you. Remember, when you buy World Batteries, every dollar that you spend goes into the battery—not for expensive sales offices and salesmen.

**WORLD BATTERY CO.**

1219 SOUTH WABASH AVENUE  
CHICAGO - - ILLINOIS

**READ THE NEXT PAGE! IT MEANS \$ TO YOU**

**6 Volts 100 Amps**  
Solid Rubber Case  
One Piece  
**\$12<sup>25</sup>**  
For Radio

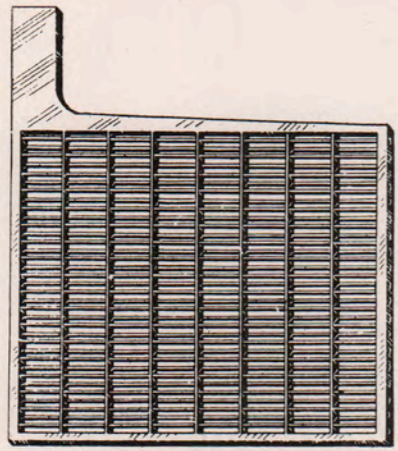
**THE WORLD**  
**Solid Rubber Case Battery** The Last Word in Battery Construction

**6 Volt-11 Plate**  
Solid Rubber Case  
One Piece  
**\$12<sup>25</sup>**  
For Fords

The most convincing proof that our manufacturing and sales methods accomplish all that we claim for them is to be found in our price list and specifications. There is not another manufacturer in the country selling as high a quality, guaranteed storage battery at as low a figure! They cannot do it! Their extravagant sales methods prohibit it.

**WORLD AUTO and RADIO A STORAGE BATTERIES ARE GUARANTEED FOR Two Years**

[Unconditionally]



Every battery sold by us is unconditionally guaranteed in writing for two years. This unusually liberal guarantee is made possible by using only the very highest quality materials and correct design.

**World Batteries Are Specially Designed**

For radio work, the problem of battery design is entirely different from that in automobile starting and lighting. Our Radio Batteries are designed for radio work, and our Automobile Batteries for lighting and starting. They both perform efficiently the work which they are designed to do—they are guaranteed to do it. Our SOLID RUBBER CASE PREVENTS LEAKAGE and can be used with utmost safety on your finest rugs without danger of acid burns.

**GENERAL SPECIFICATIONS**

The General Specifications of the World Radio and Automobile Batteries are very similar. For that reason we have listed them together. Remember, however, that every battery is Specially Designed. Special Oversize World Battery Plates are part of the equipment of every World Battery. They are built to stand the strains of long service. They are extremely hard and extra heavy, but sufficiently porous to permit a free flow of electric current through the plates. Another World Battery feature is the Gasket Type hard rubber covers, heavy plate straps and connectors. The space between the jar cover and connector is ample to permit lifting battery from box by grasping the connector. Every solid rubber case is given a rigid inspection and tested in our factory before it is permitted to be taken to the retail Type (see cut and description). Our SOLID RUBBER CASES are of extra heavy thickness and are full moulded from the finest grade of Para rubber compounded so as to make them acid proof and leak proof. They are indestructible, but still permit of expansion. The handles are built as part of the box, eliminating the chances of broken handles.

**OUR INDESTRUCTIBLE SOLID ONE PIECE RUBBERIZED CASE**

insures your battery against breakage of either case or jars. Result! No more leakers or corrosion.

The case is of one piece construction and is partitioned to give the proper number of cells and at the same time these partitions act as a support, giving in effect an indestructible combination of case and jars.

Rough handling or vibration will not effect the life of a World Battery.

Your order will be shipped C. O. D. same day as received, subject to your examination and approval at the express office.

Five per cent cash discount allowed when check or money order in full accompanies order.

The vital element in every storage battery is the plate, composed of the grid, into which is pressed a composition called "active material." The grid, being the foundation of the plate, is actually the foundation of the battery, so a weak grid that will buckle or warp naturally means a weak, uncertain battery. In "active material" surface and strength of grid is where the World Battery Plates are demonstrably better.



The World Genuine Port Orford White Cedar Separator, resawed vertical grain, is used in all World Batteries. This is a hardwood separator, giving longer service than any other type and, due to the method of cutting and treating, offers very little resistance to the passage of current, thus giving plenty of "pep" and power.

**AUTOMOBILE PRICES**

<b>6 Volt, 11 Plate</b> .....	<b>\$12.25</b>
<small>Auburn, all models; Buick, 1917-18; Chevrolet 490; Cleveland, all 20-21; Ford, all models; Grant, 1919; Hupmobile, 1918-19-20-21-22; King, 1916-17-18; Liberty, 1920; Mitchell, 1918-19-20-21; Oakland, 1918-19-20; Oldsmobile, 1917-18-19; Overland, 1920-21; Saxon, all models; Scripps-Booth, 1917-18-19; Stephens, all models; Studebaker, 1921.</small>	
<b>6 Volt, 13 Plate</b> .....	<b>14.25</b>
<small>Buick, all models; Briscoe, all models; Chevrolet Baby Grand; Cole, all models; Columbia, all models; Elgin, all models; Essex, all models; Jeffery, all models; Jordan, all models; King, all models; Liberty, all models; Maxwell, all models; Mitchell, all models; Moon, all models; Nash, all models; National, all models; Oakland, all models; Oldsmobile, all models; Overland, all models; Paige, all models; Reo, all models; Scripps-Booth, all models; Studebaker, all models.</small>	
<b>12 Volt, 7 Plate</b> .....	<b>17.00</b>
<small>Briscoe, 1915-16; Dodge, all models; Franklin, 1917-18-19-20; Maxwell, 1916-17-18-19.</small>	
<b>Same 50% saving on all cars. Give make of car.</b>	
<small>Guaranteed 2 Years in Writing</small>	



**Radio Batteries**

Dependable amperage is the one essential point that every user appreciates.

World products are known for their staying quality and can be depended upon to give their service according to their rating.

**RADIO PRICES**

Solid One Piece Rubberized Case

<b>6 Volt, 100 Amps</b> .....	<b>12.25</b>
<b>6 Volt, 120 Amps</b> .....	<b>14.25</b>
<b>6 Volt, 140 Amps</b> .....	<b>\$16.00</b>
<b>Guaranteed for Two Years</b>	

**WORLD BATTERY CO., 1219 S. Wabash Ave., Chicago, Ill.**

344

532



---

# WORLD BATTERY COMPANY

---

1219 So. Wabash Ave.  
CHICAGO



David F. Thomas,  
Proctorville, Ohio.

ADDRESS  
ALL COMMUNICATIONS  
TO THE  
CHICAGO STUDIO  
SUITE 728, 306 SO. WABASH AVE.  
TELEPHONE HARRISON 5127

CHARLES E. ERBSTEIN  
OWNER

CARL J. MEYERS  
DIRECTOR

VILLA OLIVIA  
RADIOPHONE STATION

W T A S

WILLIE TOMMY ANNIE SAMMY

ELGIN, ILLINOIS

Dec. 1st, 1924.

Mr. David F. Thomas,  
Twenty-Sixth St. Ferry Co.,  
Proctorville, Ohio.

Dear Mr. Thomas:

In reply to your  
letter of Nov. 27th, we wish to  
advise that the following is an  
outline of our broadcasting hours.

6 P.M. to 12:30 A.M. Every night  
2 P.M. to 5 P.M.  
12:30 P.M. to 1:30 A.M. Thursday  
and Friday

Thanking you for  
your letter, we remain

Yours very truly,

*John Fairbairn*

Manager.

GH



CHICAGO STUDIO  
VILLA OLIVIA RADIOPHONE STATION

WTAS

KIMBALL HALL, CHICAGO, ILL.

161



161

Mr. David F. Thomas,  
Twenty-Sixth St. Ferry Co.,  
Proctorville, Ohio.

# STATION WTAY

OAK PARK, ILLINOIS

Dear Radio Fan:

Your comment on our program is very much appreciated. We hope to hear from you again.

Oak Leaves Station.

---

Operated by the Oak Leaves Broadcasting Station, Inc., in conjunction with the Oak Park Arms Hotel, Oak Park, Ill.

Oak Leaves is a weekly newspaper published in and for Oak Park and River Forest, Incorporated Municipalities, residential in their character, and located near Chicago.

Oak Leaves is unique in that it is published in magazine form and deals only in local affairs, ignores all scandal and failures among mankind. It is now in its 43rd year.

DESCRIPTION OF STATION

Located at the Oak Park Arms Hotel, the studios, announcing room, reception room are all located on the main floor; the transmitting equipment is located on the roof and connected with the studio by special cables. The antenna has a height of 200 feet and consists of a flat top aerial of 6 cables 100 feet in length. A fan type counterpoise is used, consisting of 2,000 feet of copper cables directly beneath the antenna wires. The transmitter has a rated power output of 500 watts and is operated on a wavelength of 283 meters daily between the hours of 6:15 p. m. and 8:15 p. m., central standard time, except Sunday and Monday.



*David Thomas*

*Proctorville*

*Ohio*

L. J. CROWLEY, PRES.

TELEPHONE 222

# Central Garage

ILLINOIS GARAGE CO., INC.

Expert Repairing \* Fireproof Storage

512 CASS STREET

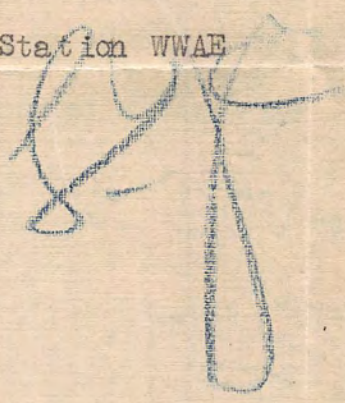
Joliet, Illinois

Station WWAE

On air Mon nites from 7-9  
Wed Sat & Sun nites from 9-12

750 Watt Station; 242 wave meters.

Station WWAE



# Instructions for Using "Proof of Reception" Card

Remember, the station must be convinced that you have actually heard the broadcasting. Comments of the Announcer or the mention of a particular identifying incident that occurred during the broadcast, perhaps, the best proof of this. The exact time that a particular number began or ended or the sequence of numbers are other proofs.

Fill out all the blanks on the card and take care that your name and address are plainly written where they belong and that a dime is inserted. Then put the card in an envelope addressed to the broadcasting station you heard. A list of addresses of broadcasting stations is included in your **ekko** stamp album.

\_\_\_\_\_

My Name

\_\_\_\_\_

City

\_\_\_\_\_

State

\_\_\_\_\_

Street and Number

On \_\_\_\_\_

Date (Day and Month)

at \_\_\_\_\_

Time (A. M. or P. M.)

I heard your station \_\_\_\_\_

Call letters

broadcasting the following: \_\_\_\_\_

\_\_\_\_\_

\_\_\_\_\_

\_\_\_\_\_

\_\_\_\_\_

Please send me one **ekko** stamp of your station. Enclosed find ten cents to cover cost of mailing and verifying.

Be sure your name and address are PLAINLY marked above.

At what hours do you use  
your radio most?

- \_\_\_\_\_
- Songs popular
- Songs classical
- Orchestra jazz
- Orchestra classical

- \_\_\_\_\_
- Theatrical Productions
- Sports
- Politics
- Lectures

The broadcasting station will appreciate your filling in the above as well as listing, in the order in which you prefer them, the following kinds of broadcasting:

My set is:  Tube  
Crystal  
(No. of Tubes)

Type of Circuit \_\_\_\_\_

Name of Mfr. \_\_\_\_\_

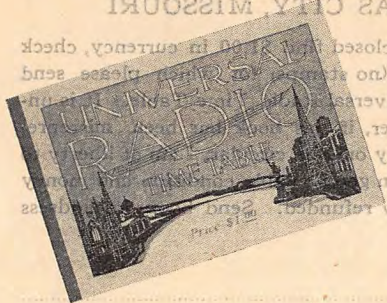
## Proof of Reception Card

This card is supplied for your convenience in communicating with the broadcasting station to procure an **ekko** stamp supplied by that station.

It is necessary that definite information, other than that appearing in public print, be given to determine the authenticity of your claim.

**86 pages!**  
**2nd Edition**

## **No Radio Complete without this Valuable CALL BOOK!**



How many broadcasting stations do you know? What wave length does WRC use? When does WRC broadcast? Who is WRC? With the **UNIVERSAL RADIO TIME TABLE** you can acquaint yourself with such information in 15 seconds.

How often have you invited friends to your home to enjoy your radio, and you spend practically the whole evening frantically trying to get WRR, OLO, etc. and get nothing satisfactory except 7% oil, while your friends sit in silence and impatience, and return home utterly bored.

The **UNIVERSAL RADIO TIME TABLE** would have made your evening a success. This book will show you instantly cities broadcasting, the hour and day, giving call letters wave lengths, watts and kilowatts. You can log your dial locations for future reference, making it a simple matter to pick up any station immediately at any time.

This book makes it possible for you and your family to enjoy your radio all the time. You don't know the joy of radio without it, and you will never be without it again.

This book consists of 86 pages of radio time tables, listing 584 broadcasting stations including Market Quotations for the farmer and business man, Churches, Dance Music, Night broadcasting, Foreign Stations and Colleges. Printed on high grade book paper, durably bound, cover wire stitched and taped. Will stand plenty of use and abuse.

The biggest value you ever received. Makes your radio as simple to operate as a Victrola. Order your copy now and if it isn't satisfactory return same within five days and get your money. That is as fair as we can put it. If your neighbors or friends want a copy, **HIDE YOURS** and write us.

**Sent Postpaid anywhere  
in America**

**for ONLY \$1.00**

**See other side. Order Now!**

**Read What Others  
Say Then Mail Your  
Order Right Away!**

"I consider your book indispensable to complete radio joy. It makes the air give up its wealth of radio treasure."

John M. Tutt,  
Christian Science Lecturer

"You are the only publication that has given our program correct. We appreciate it"

The Los Angeles Times  
James S. Doggett, Radio Dept.

"A concise, helpful call book which contains information that any radio fan is anxious to get."

Ford Motor Company  
R. R. Donalson, Radio Dept.

"It is with great pleasure that we recommend the Universal Radio Time Table. It is by far one of the best books of this nature I have seen.

L. F. Chadeayne,  
Mgr. Adv. and Publicity Dept.  
Radio Corporation of America

**UNIVERSAL RADIO TIME TABLE**

2504 EAST 15TH STREET

**KANSAS CITY, MISSOURI**

Gentlemen:—Enclosed find \$1.00 in currency, check or money order (no stamps) for which please send One Copy of Universal Radio Time Table. It is understood, however, if this book has been misrepresented in any way on this circular, I am at liberty to return the book in good salable condition and money will be cheerfully refunded. Send books to address below.

Mr.....

Street.....

City..... State.....

**You Are Ordering From the 2nd Edition, Just Off of the Press!**

*Station W W A E*



175

WWAE



175



David F. Thomas  
Proctorville, Ohio

Station WWAE, Joliet, Ills.

