

THE DIALIST

DEC.

OFFICIAL PUBLICATION
OF THE
NEWARK NEWS RADIO CLUB

1934



¢

10

A COPY

BROADCASTING STATIONS BY FREQUENCIES
AND CALL LETTERS
WHAT IS A DX STATION?
SHORT WAVE LOG
NEWS OF RADIO STARS

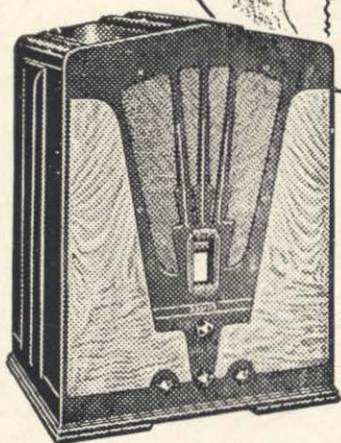
BUY YOUR RADIO AT BAKER BROS.

"Your Membership Card will be Recognized"

Round the World

WITH THIS NEW 1935

PHILCO



1935 PHILCO 16B

Combined here are features no other Baby Grand has ever possessed. Five Tuning Bands, Super Class "A" Audio System, Over-size Electro-Dynamic Speaker, Bass Compensation, Four-Point Tone Control, Automatic Volume Control, Shadow Tuning, PHILCO High-Efficiency Tubes, etc. Newly designed cabinet of Butt Walnut and old ivory trim. Hand-rubbed finish.

This superb PHILCO brings in short-wave foreign and American broadcasts, plus standard American programs. You'll find a new thrill when you listen to programs from London, Paris, Berlin, Rome, Madrid, Buenos Aires and countless other stations.

Foreign Broadcast PHILCOS

as low as \$ **39.95**

EASIEST TERMS

PHILCOS that tune-in the world may be had in a wide variety of prices and models, to suit your purse and purpose. Come in and look them over!

Trade-in your present radio

49 NEW 1935
PHILCOS

for your selection

\$20.00 up

CALL US FOR RELIABLE AND HONEST SERVICE

BAKER BROS.

ESTABLISHED 1914

Member of Newark News Radio Club

481 CLINTON AVENUE

at Bergen Street

NEWARK, N. J.

Open Evenings

— Tel. Bigelow 3-2632-2633



E. H. SCOTT
designer and custom-builder of
Super-powered Radio Receivers
since 1924

I INVITE THE RADIO INDUSTRY TO A COMPETITIVE TEST

Let's cut out the "bunk" in radio selling
..HERE'S MY PROPOSITION

It's no wonder that you are confused by all the hue and cry of various all-wave manufacturers. Obviously, there can be but one "Best!" How are you to know which one? My suggestion to you—and my challenge to the radio industry—is that you be allowed to find out for yourself by actual trial in your own home. I have sufficient confidence in the superiority of the SCOTT ALL-WAVE XV—above any other all-wave receiver on the market today—to willingly abide by your findings.

YOU Make This Test..In Your Own Home..You to be the Final Judge!

Get a SCOTT ALL-WAVE XV—direct from the Laboratory where it is custom-built—install it in your home and test it side by side with any other all-wave receiver in the world. If, at the end of thirty days' competitive trial, you are not entirely satisfied that the SCOTT ALL-WAVE XV brings in more stations, from greater distances, with more volume and better tone, on both the short waves and the broadcast band than any other all-wave receiver built, you can return it without question.

Don't Be "Sold" a Radio—Buy it on Facts

Disregard all claims—remember that adjectives and fancy phrases can be used by anyone. Your investment in an all-wave receiver is a sizeable one, and deserves serious consideration. Make the receiver you finally select prove itself in actual operation over a long enough period of time to be conclusive.

You Can't Buy Custom-built Quality for \$39.50 or \$59.50

Radio receivers can be built only by the "production line" system—where sets are turned out cheaply in great volume—or by the custom-building system—where exquisite care and micrometrically exact technical handicraft goes into the slow and painstaking construction of each individual receiver. Probably the SCOTT ALL-WAVE XV is the only all-wave receiver on the market today that is truly "custom-built." It is the only one entirely designed, built with scientific precision, and sold in its manufacturer's own technical laboratories. Your own judgment tells you that such construction can't be accomplished at a selling price of \$39.50, \$59.50, or \$79.50—particularly when to manufacturing costs must be added liberal profit to jobbers and dealers.

Dollar for Dollar—the SCOTT ALL-WAVE XV Is the Biggest Value in All-Wave Radio Today

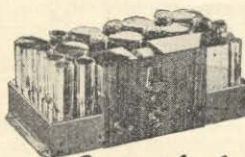
If you could look at the "insides" of other all-wave receivers in comparison you would immediately see why the SCOTT ALL-WAVE XV is such a big value, even if you knew absolutely nothing about radio construction. You would find oversize and over-strength construction everywhere, and innumerable points of superiority that would instantly explain to you why this is the only all-wave receiver given a five-year warranty by a responsible manufacturer. Why not take advantage of the opportunity of making an actual, convincing test yourself through side-by-side comparison of any other all-wave receiver during a 30-day trial period.

E. H. SCOTT RADIO LABORATORIES, INC.

4422 Ravenswood Ave. Dept. 16W4 Chicago, Ill.

Why I Dare Make This Bold Offer

The SCOTT ALL-WAVE XV is built with greater care and technical exactness... Hold most authenticated records for distance reception... Tested on most accurate and delicate measuring devices where each must show perfection... All-wave receivers exclusively for nearly six years... The prospective all-wave radio buyer deserves a square deal.



Custom-built
**SCOTT
ALL-WAVE
XV**

**MAIL
THIS
COUPON**

E. H. SCOTT RADIO LABORATORIES, INC.
4422 Ravenswood Ave., Dept. 16W4 Chicago, Ill.

Send me at once all particulars regarding the SCOTT ALL-WAVE XV, and of your 30-day trial offer for competitive test.

Name.....

Address.....

City..... State.....

The Dialist

CONTENTS

| | |
|---|----|
| FRONTISPIECE—Muriel (Honey) Dean | |
| EDITORIAL | 3 |
| TRANS-ATLANTIC RECEPTION | 3 |
| STUDIO GOSSIP | 4 |
| THE DXERS' CORNER | 6 |
| DEFINING A DX STATION | 8 |
| MONTHLY FREQUENCY TESTS | 9 |
| CANADIAN FREQUENCY TESTS | 11 |
| AUSTRALIAN AND NEW ZEALAND STATIONS..... | 11 |
| THE MONTH'S CHANGES | 11 |
| MICRO CHATS | 12 |
| BROADCASTING STATIONS (By Frequencies) | 14 |
| BROADCASTING STATIONS (By Call Letters) | 28 |
| NNRC HAM NOTES | 34 |
| SHORT WAVE NOTES | 35 |
| PRINCIPAL SHORT WAVE STATIONS OF THE WORLD | 36 |
| INTERESTING RADIO CALLS | 39 |

EDITOR

IRVING R. POTTS

ASSOCIATE EDITORS

ALFRED W. OPPEL

HERMAN A. WITTENBERG

Published monthly by The Newark News Radio Club, 215 Market
Street, Newark, N. J. Subscription price \$1.00 per year.

EDITORIAL

IN presenting the third issue of The Dialist its editors have endeavored to include information and items of interest to all classes of radio listeners. It will be noted that the log of broadcasting stations which heretofore has appeared in frequency arrangement, has been augmented by an alphabetical list which will serve as a further reference to quickly locate stations.

We consider these logs and the lists of frequency tests, both by stations in the United States and Canada, to be most up-to-date and it is hoped that the columns devoted to short wave activities will meet with the approval of listeners interested in that phase of reception. The short wave log has been compiled by one of the country's foremost authorities, Captain Horace L. Hall.

It is the intention to make The Dialist even still better in subsequent issues and in that direction suggestions and constructive criticism are welcomed from both readers and NNRC members.

The editors take this opportunity to extend holiday greetings to readers of The Dialist, to the officials of The Newark Evening News, to the National Broadcasting Co., the Columbia and American Broadcasting Systems and to all those whose excellent co-operation has made this publication possible.

TRANS-ATLANTIC RECEPTION

The present DX season has been unusual in that listeners along the Atlantic Coast and even in sections farther inland have been hearing consistently, a number of European broadcasters, including Poste Parisien, 959 kilocycles, Paris and Radio Toulouse, 914 kilocycles, Toulouse, all in France, during the late afternoon.

Last year Poste Parisien and Radio Normandie, 1458 kcs., Fecamps, France, were logged on early morning programs by thousands of DXers. It will be remembered that the former rebroadcast Australian cricket matches received by telegraph direct from "down under". Here and there reports of reception of European stations were received but these were confined chiefly to the New England States and Maritime Provinces of Canada.

The 1934-35 season had hardly gotten under way when headquarters of The Newark News Radio Club was deluged with listeners' mail and in almost every instance the writers were amazed at the

signal strength and clarity of the signals of our friends across the Atlantic.

Among the regulars this year are Poste Parisien, Radio Normandie, Radio Toulouse and Radio Strasbourg, all in France. The latter is assigned to 859 kcs.



Rosemary (left) and Priscilla Lane, with Fred Waring's program, are probably the only sisters in radio heard as individual soloists and not as a harmony team.

The Germans too, are frequent visitors to these shores. Best bets in that country are Cologne, 660 kcs.; Munich, 745; Leipzig, 785; Hamburg, 904, and Frankfurt, 1195 kcs.

HAL, 545 kcs. Budapest, Hungary, is also being reported although not as regularly as the others. Another infrequent one is Radio Beromunster, 555 kcs., Switzerland.

Copenhagen, Denmark, 1178 kcs., has been logged on various occasions while IITO, Turin, Italy, 1140, and Trieste, also in Italy, and on 1223 kcs., might be classed with the regulars.

The scarcity of reports of European reception from DXers in the middle and far West is causing quite some comment as to the eccentricities of Trans-Atlantic reception inasmuch as the signal strength of stations in Europe

(Continued on Page 34)

STUDIO GOSSIP

Fire Chief Ed Wynn has a fan note from the "Last of the Carrs," in response to a letter signed by "Caboose," which he read on the air recently.

Arthur Allen, NBC character actor, in his early days trouped with a repertoire company. Invariably, he was cast as an English butler. After exclaiming "Yes, me Lord," something like 10,000 times Allen sickened of stock acting and got himself a radio job.

Wendell Hall, the Red Headed Music Maker, who is heard over an NBC-WEAF network each Sunday at 7:45 P. M., EST, is, measure for measure, probably the highest paid composer on record. He received more than \$6,000 per bar for writing "It Ain't Gonna Rain No Mo" because the whole song contained only eight bars of music. The rest was repetition and the song netted Wendell more than \$50,000 while it was selling two million copies of sheet music.

JOEY'S DIFFERENT

Joey Nash, the tenor who sings with Richard Himber and his Champions over an NBC network Monday evening at 8 works so hard crooning love songs and learning new ones that he hasn't time left to make them a personal interest.

Some singers believe they find inspiration in singing to some loved one, but Joey thinks differently. "In order to give a song its proper interpretation and do it justice," he says, "you have to concentrate on it alone. You can't do that while singing the number and thinking of someone or something else."

Joey is so busy learning such songs as "I'll Never Forget You," "Will You Remember Me?" "To Hold You and Enfold You" and "I Love You," that he hasn't had a chance to find out what "This Thing Called Love" really is. Sometime in the future he intends to investigate for himself.

Those Amos 'N' Andy episodes you hear nightly, except Saturday and Sunday, are written only a few hours before they are broadcast. There's none of this getting ahead in scripts with Freeman F. Gosden (Amos) and Charles J. Correll (Andy). They write every script the day it is broadcast. They've done so for several years, because they find they can work better that way. For one thing, the episode is fresh in their minds when it is broadcast only a short while after it is written. This is especially important in



Frank Luther, has appeared on many NBC network programs as soloist and with quartets and trios. A composer, his arrangements of favorite cowboy and hill billy songs are always in demand.

view of the fact that Amos 'n' Andy never rehearse their program. They write it together, Correll typing one original and one carbon copy, single spaced, and then he puts both copies in his hip pocket, where they remain until he produces them in the studio during the playing of the theme song. But that is not the only reason Amos 'n' Andy work so close to their broadcast schedule. Several years ago, when they sometimes wrote several episodes ahead of schedule, they found they wasted more time getting started on their job of writing than they did on the writing itself, because they knew it didn't have to be done that day. It could be postponed. Now, when they know that an episode must be written before evening they settle down to work without preliminaries.

Many persons marvel that they can keep producing daily episodes after so many years on the air. But it's simple, according to Gosden and Correll. "We've written more than 1,900 Amos 'n' Andy episodes already," they explain. "And every time the job seems difficult, we tell each other that if we've written 1,900 of them we ought to be able to do just one more. And we do!"

The twelfth anniversary of one of radio's pioneer features was celebrated Sunday morning, Nov. 18, when the 624th consecutive weekly program emanated from the Capitol Theatre in New York over an NBC network. The Capitol program first went on the air to crystal and peanut tube set listeners November 19, 1922. It immediately established itself as top rank radio entertainment, a position it has maintained through the many years despite the increasing competition of many other fine programs. During the 624 Sundays on which it has been broadcast, the Capitol Theatre program has brought to millions of listeners scores of entertainers who have achieved national radio popularity.

Major Edward Bowes, manager of the big Broadway screen house, inaugurated the now famous Capitol Family series in July, 1925. With only a few absences, most of them due to illness, the Major appeared each Sunday as the genial master of ceremonies in the widely-heard program, and his readings of appropriately topical and inspirational verse have become a feature looked forward to by millions of listeners from coast to coast.

ALLENS BUSY

Weekends aren't holidays for Fred Allen. The impresario of the Mighty Allen Art Players and star of the Town Hall Tonight broadcasts spends Saturday and Sunday working on next week's script. The script must be ready at 9 A. M. Monday, when preparation for the Wednesday program begins and very often Allen works until six or seven Monday morning before he is satisfied with the result. His right hand assistant in these long sessions is none other than Portland (Peek-a-boo) Hoffa, herself a Town Hall Tonight star and Mrs. Allen outside the studios. Weekend for the Allens actually comes in the middle of the week. They begin at 1 Thursday morning, when Town Hall Tonight signs off its repeat broadcast for Pacific coast listeners; it lasts until the cycle starts again on Saturday morning.

When Harry Richman steps up to the microphone listeners to his comic and vocal presentations may forget his other capabilities. Besides being the star of an NBC program Wednesday nights at 10.30, EST, he is a successful composer of songs. One of his early compositions was that astronomical hit "There Ought to be a Moonlight Saving Time." "Walking My Baby Back Home," and "Roll-Roll-Rolling Along," are two more that gained national recognition. Richman is tall and athletic

and has had a varied career. In turn he has been pianist for Mae West and later the Dolly Sisters; a side-show spieler, a cowboy, Atlantic City lifesaver, a dress salesman, one of America's foremost night club entertainers and a gob in the United States Navy. Richman is one of radio's pioneers and attributes the greater part of his present popularity to his air programs. His chief hobbies are yachting and gun collecting. Between programs he takes out parties of friends to cruise in nearby waters. He is aided on his programs by the music of Jack Denny and the commentator, John B. Kennedy.

Gladys Swarthout, celebrated Metropolitan Opera mezzo-soprano, will be soloist with William Daly's symphonic orchestra in the new Winter series.

WFBR TO DX

Elaborate preparations are being made by WFBR, Baltimore, for their second annual DX broadcast in conjunction with The Newark News Radio Club December 23. A new antenna has been erected since their DX program last Winter and it should materially increase WFBR's signal strength and gain many new listeners in all parts of the country.

The new voice of WFBR's transmitter is a Blaw Knox self-supporting vertical steel radiator and engineers report that its efficiency corresponds to more than double the present power. The signal is sharper, clearer and miles have been added to the station's coverage. This vertical radiator is a single tower soaring 227 feet into the air; it is the loftiest radio tower in Maryland. It has a specially designed ground system utilizing 12,000 feet of copper wire and strip. With twenty-seven tons of steel in this tower radiating the full volume of speech throughout its entire length, WFBR now has the newest and most effective broadcasting equipment.

Thus, WFBR has added another chapter to its fast moving story of success. Maryland's pioneer broadcast station first went on the air back in 1922 on a frequency of 1270 kilocycles. In 1931 they joined the NRC red network.

WFBR's NNRC program will start at 1.30 A. M., EST, immediately after the close of a sponsored three-hour dance program on the red network the night of December 22.

THE DXER'S CORNER

Henry T. Tyndall, Jr., 285 North Street, Burlington, Vt., writes: "The only catches in November were W1XBS, KYW, (in Philly); XEAF, XEK, and COA. COA was plenty tough as there was plenty of interference and a high noise level; was able however, to get his announcements and a number of selections for verification. XEK was fairly good but XEAF was weak and not on 990. I found him to be nearer 1005 kcs., and he was pretty close to KYW. Only new veries are from WLLH, WTCN and the short waver, ORK. Tuned in COH at 5.15 P. M., November 21; he came in very well."

Identifying the mystery station on 1015 kcs., as XEJ, Albert J. Bartholomew, Bradford, N. Y., adds that the Mexican is on every morning until 1.30, EST, or later, with a program of American dance music. Announcements are in English and Spanish with the selection "Sophisticated Lady," as their sign-off number. Al says: "I am hearing WAAW nearly every morning at 7, EST, when they come on the air but so far have been unable to identify any musical numbers to verify. Announcements are usually clear. Caught WABY, CKCD and CJKL Sunday morning, November 25."

Harold Gordon, 98 Second Street, Newark, N. J., informs us that while tuning in with his RCA-Victor the night of November 21 he logged KGMB, Hawaii, requesting listeners to send in reports of reception.

Says Ralph Metzger, 95 Eastern Parkway, Brooklyn, N. Y.: "When things pick up I intend to join the NNRC. I have 416 verifications at present. Do you know which station was operating on .570 kilocycles November 17 from 4 to 6 A. M.?" Our guess is TGW, 565 kcs., Guatemala City, Guatemala. Ralph also heard another foreign station on 680 that morning about 5.20 but was unable to get its call. He wonders if someone can help him identify it.

LIKES THE LS

Admitting he is keenly interested in South American stations, William Goerbig, 515 Orlinda Avenue, Scotia, N. Y.,

says he listened to LR5's NNRC broadcast November 4 and enjoyed every bit of it. School work has curtailed "The Scotia DXer's" radio activities this season but he expects to devote more time to his log from now on. We will be expecting a good DX report from that quarter before long.

Walter H. Kniffin, 7335 Ingleside avenue, Chicago, heard TGW's special program for The Newark News Radio Club November 25, and it prompted him to request membership information and an application. Mr. Kniffin adds: "I have often heard your club mentioned in connection with DX broadcasts."

Orville Brown, 419 Eighth Street, Devils Lake, N. D., believes the present DX season will be a bumper one. So far he has added TGW, LR5 and CMBC, his first stations outside of the United States, Canada and Mexico. Other new ones are CKBI and CKCH. Orville's log now includes 335 stations and 221 veries. He is determined to boost the latter number past the 300 mark before next Spring or "bust" in the attempt.

CMBC TO DX

John Clarke, 387 Fourteenth street, Buffalo, is in receipt of a verification from CMBC, 1030 kcs., Havana, whose DX announcer, Ovidio Fernandez, writes that they will transmit a special program for the NNRC December 18 from 1 to 2 A. M., EST.

DXers who might wish to obtain information concerning European BC stations can do so by writing to Hartley Phillips, R. F. D. No. 2, Flemington, N. J., enclosing return postage. Hartley has devoted considerable time and effort to the broadcasters across the Atlantic and as the result, his compilations are valuable for reference purposes.

Reporting verifications from CJLS, CKBI, WGPC, WDNC, and WAGF, William Benz, 4717 Morganford Road, St. Louis, advises he heard TGX, Guatemala City, recently, testing on about 595 megacycles. They announced they were the only short wave station in Guatemala and gave their schedule as follows: 8 A. M., to 9 A. M.; 1 to 2 P. M., and 8 P. M., to midnight, EST. To date, Mr. Benz has acquired 666 confirmations of reception.

Carl Forestieri, (The Bronx Owl) 463 East 185th Street, New York City, added three new ones to his log the morning of November 25—WABY, testing

on 1370 kcs., from Albany, N. Y.; CJKL and KTRB. Says Carl: "The Europeans and trans-Pacifics seem to go up a side street when they reach this neighborhood and VOGY eluded me Honor certificates and hope to be able you see I have my eyes on one of those once more November 25."

WANTS HONOR CERTIFICATE

"From now on I am going to spend all the time I possibly can at my radio; to obtain one before the end of the present season," writes Harry M. Emerrick, Shanksville, Pa. "I need forty-five veries, fifteen of which must be 2,000 milers, in order to qualify. So far this Fall, I have only been able to add twenty-five new stations to my log, increasing it to 774. My best verifications this season are KOTN, KWYO, KIDO, KPAC, (completing Texas); CHWC, WHEF, CJGX, and CJLS for a total of 755."

Submitting a resume of his DXing activities, Lloyd S. Hahn, 2810 Laurens Street, Baltimore, states he has added thirty-three new ones this season including YVIRC, LS2, TGW, CKBI, CKGX, XEMO and KFKU. Lloyd's log now contains 790 stations of which 650 are verified and 105 are 1,900 milers. Eighty-one of the latter have confirmed his reception.

James Dunigan, (The Knight of the Burning Candle) 194 North Street, New Britain, Conn., has received 692 stations and 268 verifications, thirty-four of which are in the 2,000-mile category. Jimmy's new catches are CKCK, CMBC, COX, CJKL, KOB, KADA, WKZO, WBRE, WNEL, WNBH, WTAQ, WBAA, W1XBS, VONF, XEBC, XEK and YVIRC. His only SW addition is COA, Havana, Cuba. Confirmations have come in from CJLS, KTSA, KTM, KFKA, KGA, KVOB, KFBB, WHJB, WPRO, WPTF, WMBI, WOV, WEDC, WHBI, WIBA, WNBH, WSJS, WADC, WLLH, WAGM, WLAP, WOKO, WMBQ and XEAW. Jimmy is having difficulty procuring verifications from WMEX, Chelsea, Mass., and WIP, Philadelphia. The return postal card scheme has worked with WMEX but we are at a loss to understand WIP's laxity. Perhaps some other DXer can give Jimmy the combination of that one.

Andrew Hill, (The Night Owl) 14 Worthley Street, Red Bank, N. J., has boosted his log a few notches higher through the acquisition of CRCS and CHNC, both 100 watt Canadians. He



Loretta Lee, torch singer, featured with George Hall's orchestra and on her own broadcast every Thursday at 5 P. M., E.S.T., over CBS.

now has 562 BC stations. Those of you dial twisters who would like to correspond with Andy will find it worthwhile. He'll come right back at you and nine times out of ten you will find his letters contain some good DX tips.

LORD CLOSE TO 900

DXing, according to Carleton Lord, 637 North Highland Avenue, Akron, O., has been spotty for some time now. Carl says he found September and the early part of October most favorable with everything pointing to a good old-fashioned season. However, static and local interference have increased tremendously the last month and his chances of hearing a few Aussies and Zedders were null and void. Despite the QRM, Carl has added thirty-four new ones since September to bring his log total to 891. Best catches were XEXX, 2BL, XEJ, XEK, and XEAF.

On its initial broadcast of a series of Newark News Radio Club programs, November 4, LR5, Buenos Aires, was received with excellent signal strength up in Portland, Ore., by Chester H. Monnich. Commenting about his reception, Chester says: "LR5 was perfect and I sure was glad to be able to

(Continued on Page 39)

DEFINING A DX STATION

We are asked: "What is a DX station?" many times during the course of a season by the uninitiated. Some want to know if distance, power, or lack of power are requisites to classify a station as a DX catch. We therefore mention the circumstances, or combination of circumstances, whereby any broadcasting station may be in that category, depending upon your geographical location.

For example: KFI, 640 kcs., Los Angeles, only a few years back used 5,000 watts and was then considered a good catch. Now that it has 50,000 watts, few listeners on this continent consider it as such but in South America, Europe, Asia, Australia or New Zealand, it still is alluring to the dial twister.

Another example: In Omaha, Nebr., is located station WAAW which operates on 660 kilocycles with 500 watts. To listeners in the western section of this country WAAW is perhaps an ordinary catch but in those other sections covered by WEEF, assigned to the same frequency, WAAW is very desirable and until several months ago it was missing from many a DXer's log. The reason? WAAW signs on and signs off while WEEF is operating with its 50,000 watts. Ordinarily, a 500 watt station, on a clear channel and on a fairly decent DX night can be heard in almost every part of the northern hemisphere but not when it is blanketed by another with 100 times greater power. It will now be understood why the announcement that WAAW would broadcast a series of special early morning programs was hailed with glee by the DXing fraternity.

DAYTIMERS RARE

Daytime stations, outside of their normal coverage area, are usually considered to be good DX catches. Stations that rarely transmit special, early morning programs, and especially those on crowded channels are also good catches. For instance: KGGC,

San Francisco, a 100 watt on 1420 kilocycles has always been and still is considered to be a desirable addition to DXers' lists, not alone because of its distance from other parts of the country but primarily because it has seldom been on the air during the early morning hours. Stations with inferior transmitting equipment and with transmitters located in sections where they do not operate with a maximum of efficiency, may also be included in the seldom heard category.

Summed up, the situation is this: When a station is assigned to day-time operation only and with low power, its coverage is limited to but a few hundred miles; such a station's effectiveness is further reduced when it is

assigned to a frequency with other stations of equal or greater power. Those assigned to such frequencies as 1200, 1210, 1310, 1370 or 1420 kcs., with partial time on the air, may also be classed as hard to get outside of their immediate areas. Poor transmitter locations and broadcasting equipment are the reasons why some stations are classed as DXes. Finally, the distance of a station from the point of reception is a factor in determining its classification; in other words, a broadcaster 2,000 miles or more away and operating with low power falls into that category.



Whispering Jack Smith, who claims to have originated the low, intimate type of vocalizing, is a veteran radio and recording artist.

Many stations have been rarities among the dial twisters until they were persuaded by the courtesy programs committees of the various clubs to transmit DX programs or a series of programs. As a consequence, they have become better known and their verifications part of the records of the great majority of DXers.

In the final analysis we can answer our questioners who ask: "Is such and such a station a DX catch?" by saying: "It depends upon where you live."

MONTHLY FREQUENCY TESTS

(Time is A.M., Eastern Standard; Frequencies in Kilocycles)

FIRST MONDAY

| | |
|--------------|--------------------------------|
| 2.00 to 2.20 | 1500—WCNW, Brooklyn, N. Y. |
| | 1310—WJAC, Johnstown, Pa. |
| 2.10 to 2.30 | 1210—WFAS, White Plains, N. Y. |
| | 1370—WRAK, Williamsport, Pa. |
| 2.20 to 2.40 | 1500—WNBK, Binghamton, N. Y. |
| | 580—WCHS, Charleston, W. Va. |
| 2.30 to 2.50 | 1420—WAGM, Presque Isle, Me. |
| | 1370—WBTM, Danville, Va. |
| 2.40 to 3.00 | 1200—WLVA, Lynchburg, Va. |
| 2.50 to 3.10 | 1420—WHDL, Olean, N. Y. |
| | 1310—WHAT, Philadelphia, Pa. |
| 3.00 to 3.20 | 1200—WCAX, Burlington, Vt. |
| 3.10 to 3.30 | 1500—WSYB, Rutland, Vt. |
| | 1310—WTEL, Philadelphia, Pa. |
| 3.20 to 3.40 | 1200—WIBX, Utica, N. Y. |
| 3.30 to 3.50 | 1370—WQDM, St. Albans, Vt. |
| | 1210—WKOK, Sunbury, Pa. |
| 3.40 to 4.00 | 1310—WMBO, Auburn, N. Y. |
| 3.50 to 4.10 | 1370—WABY, Albany, N. Y. |
| | 1210—WBAX, Wilkes-Barre, Pa. |
| 4.00 to 4.20 | 1220—WCAD, Canton, N. Y. |
| | 1200—KOOS, Marshfield, Ore. |
| 4.10 to 4.30 | 1210—WBBL, Richmond, Va. |
| | 900—KGBU, Ketchikan, Alaska. |
| 4.20 to 4.40 | 1290—WNBZ, Saranac Lake, N. Y. |
| | 1310—WBRE, Wilkes-Barre, Pa. |
| | 1200—KGVO, Missoula, Mont. |
| 4.30 to 4.50 | 1200—WNBO, Washington, Pa. |
| | 1500—KPQ, Wenatchee, Wash. |
| 4.40 to 5.00 | 1310—WRAW, Reading, Pa. |
| | 1210—KGY, Olympia, Wash. |
| 4.50 to 5.10 | 940—WAAT, Jersey City, N. J. |
| | 1370—KRKO, Everett, Wash. |
| 5.00 to 5.20 | 570—WSYR-WSYU, Syracuse, N.Y. |
| | 1200—KFXD, Nampa, Idaho. |
| 5.10 to 5.30 | 600—WCAC, Storrs, Conn. |
| | 1370—KVL, Seattle, Wash. |
| 5.20 to 5.40 | 1310—KGEZ, Kallispell, Mont. |
| 5.30 to 5.50 | 1370—KUJ, Walla Walla, Wash. |
| 5.40 to 6.00 | 1310—KGCX, Wolf Point, Mont. |
| 5.50 to 6.10 | 780—KFQD, Anchorage, Alaska. |
| 6.00 to 6.20 | 880—KSEI, Pocatello, Idaho. |
| 6.10 to 6.30 | 1200—KVOS, Bellingham, Wash. |
| 6.20 to 6.40 | 1310—KIT, Yakima, Wash. |
| 6.30 to 6.50 | 1120—KRSC, Seattle, Wash. |
| 6.40 to 7.00 | 1310—KXRO, Aberdeen, Wash. |
| 6.50 to 7.10 | 1120—KFIO, Spokane, Wash. |
| 7.00 to 7.20 | 1210—KFJI, Klamath Falls, Ore. |
| 7.10 to 7.30 | 1310—KMED, Medford, Ore. |
| 7.20 to 7.40 | 1420—KORE, Eugene, Ore. |

FIRST TUESDAY

| | |
|--------------|---------------------------------|
| 2.00 to 2.20 | 1210—WPAX, Thomasville, Ga. |
| 2.10 to 2.30 | 1200—WBHS, Huntsville, Ala. |
| 2.20 to 2.40 | 1370—WHBQ, Memphis, Tenn. |
| 2.30 to 2.50 | 1420—WEED, Rocky Mount, N. C. |
| 2.40 to 3.00 | 1500—WOPI, Bristol, Tenn. |
| 2.50 to 3.10 | 1320—WSMB, New Orleans, La. |
| 3.00 to 3.20 | 1370—WMBR, Jacksonville, Fla. |
| 3.10 to 3.30 | 1420—WNRA, Muscle Shoals, Ala. |
| 3.20 to 3.40 | 1310—WSJS, Winston-Salem, N. C. |
| 3.30 to 3.50 | 1500—WHEF, Koscusko, Miss. |
| 3.40 to 4.00 | 1200—KMLB, Monroe, La. |
| 3.50 to 4.10 | 1370—WAGE, Dothan, Ala. |

| | |
|--------------|--------------------------------|
| 4.00 to 4.20 | 1200—KWG, Stockton, Calif. |
| | 1290—WNEI, San Juan, P. R. |
| 4.10 to 4.30 | 1310—WTJS, Jackson, Tenn. |
| | 1500—KPJM, Prescott, Ariz. |
| 4.20 to 4.40 | 1370—WFFB, Hattiesburg, Miss. |
| | 1370—KERN, Bakersfield, Calif. |
| 4.30 to 4.50 | 1420—WGPC, Albany, Ga. |
| | 1500—KXO, El Centro, Calif. |
| 4.40 to 5.00 | 1200—WBNO, New Orleans, La. |
| | 1210—KIEM, Eureka, Calif. |
| 4.50 to 5.10 | 1310—WROL, Knoxville, Tenn. |
| | 1440—KLS, Oakland, Calif. |
| 5.00 to 5.20 | 1500—WDNC, Durham, N. C. |
| | 1420—KGIX, Las Vegas, Nev. |
| 5.10 to 5.30 | 1200—WJBW, New Orleans, La. |
| | 1320—KGMB, Honolulu, Hawaii. |
| 5.20 to 5.40 | 1310—WAML, Laurel, Miss. |
| | 1370—KRE, Berkeley, Calif. |
| 5.30 to 5.50 | 1210—WSIX, Springfield, Tenn. |
| | 750—KGU, Honolulu, Hawaii. |
| 5.40 to 6.00 | 1370—KGR, Tucson, Ariz. |
| 5.50 to 6.10 | 1310—KCRJ, Jerome, Ariz. |
| 6.00 to 6.20 | 1100—KGD, Stockton, Calif. |
| 6.10 to 6.30 | 1200—KSUN, Lowell, Ariz. |
| 6.20 to 6.40 | 740—KTRB, Modesto, Calif. |

FIRST WEDNESDAY

| | |
|--------------|--------------------------------|
| 2.00 to 2.20 | 1310—WEBR, Buffalo, N. Y. |
| 2.10 to 2.30 | 920—WFEN, Philadelphia, Pa. |
| 2.20 to 2.40 | 1310—WSAJ, Grove City, Pa. |
| 2.30 to 2.50 | 1410—WHIS, Bluefield, West Va. |
| 2.40 to 3.00 | 1310—WFBG, Altoona, Pa. |
| 2.50 to 3.10 | 880—WPHR, Petersburg, Va. |
| 3.00 to 3.20 | 1370—WDAS, Philadelphia, Pa. |
| | 1500—WKBB, East Dubuque, Ill. |
| 3.10 to 3.30 | 1410—WRBX, Roanoke, Va. |
| | 1200—WHBC, Canton, O. |
| | 1420—KGIW, Trinidad, Colo. |
| 3.20 to 3.40 | 1210—WMBG, Richmond, Va. |
| | 1310—WTRC, Elkhart, Ind. |
| | 1370—KICA, Clovis, N. M. |
| 3.30 to 3.50 | 1370—WSVS, Buffalo, N. Y. |
| | 1410—WBCM, Bay City, Mich. |
| | 1200—KGHI, Little Rock, Ark. |
| 3.40 to 4.00 | 1310—WGH, Newport News, Va. |
| | 630—WGBF, Evansville, Ind. |
| | 1420—KIDW, Lamar, Colo. |
| 3.50 to 4.10 | 1210—WOCL, Jamestown, N. Y. |
| | 1410—WROK, Rockford, Ill. |
| | 1200—KBTM, Jonesboro, Ark. |
| 4.00 to 4.20 | 880—WQAN, Scranton, Pa. |
| | 1310—WBOW, Terre Haute, Ind. |
| | 1280—KFBB, Great Falls, Mont. |
| 4.10 to 4.30 | 1430—WHEC, Rochester, N. Y. |
| | 570—WOSU, Columbus, Ohio. |
| | 1370—KGFL, Roswell, N. M. |
| 4.20 to 4.40 | 1190—WSAZ, Huntington, W. Va. |
| | 1310—WBEO, Marquette, Mich. |
| 4.30 to 4.50 | 1500—WGAL, Lancaster, Pa. |
| | 570—WKB, Youngstown, Ohio. |
| | 1250—WCAL, Northfield, Minn. |
| 4.40 to 5.00 | 1070—WCAZ, Carthage, Ill. |
| | 1200—KFJB, Marshalltown, Ia. |
| 4.50 to 5.10 | 1400—WKBF, Indianapolis, Ind. |
| | 1420—WACO, Waco, Tex. |

5.00 to 5.20 1070—WDZ, Tuscola, Ill.
 1200—KGDE, Fergus, Falls, Minn.
 5.10 to 5.30 900—WLBL, Stevens Point, Wis.
 1250—WLB, Minneapolis, Minn.
 5.20 to 5.40 890—WBAA, West Lafayette, Ind.
 1200—WIL, St. Louis, Mo.
 5.30 to 5.50 1440—WTAD, Quincy, Ill.
 1320—KGHF, Pueblo, Colo.
 5.40 to 6.00 1240—WXYZ, Detroit, Mich.

FIRST THURSDAY

2.00 to 2.20 1210—WSOC, Charlotte, N. C.
 2.10 to 2.30 920—WSPA, Spartanburg, S. C.
 2.30 to 2.50 1310—WSGN, Birmingham, Ala.
 2.40 to 3.00 1420—WJBO, Baton Rouge, La.
 2.50 to 3.10 1210—WGCM, Gulfport, Miss.
 3.00 to 3.20 1500—WRDW, Augusta, Ga.
 1200—WHBY, Green Bay, Wis.
 1310—WDAH, El Paso, Tex.
 3.10 to 3.30 1240—WKAQ, San Juan, P. R.
 1420—WJMS, Ironwood, Mich.
 1370—KLUF, Galveston, Tex.
 3.20 to 3.40 1360—WCSC, Charleston, S. C.
 1210—WEDC, Chicago, Ill.
 1310—KTSN, El Paso, Tex.
 3.30 to 3.50 1440—WBIG, Greensboro, N. C.
 1370—KGKL, San Angelo, Tex.
 3.40 to 4.00 1340—WCOA, Pensacola, Fla.
 1210—WSBC, Chicago, Ill.
 1310—KPPM, Greenville, Tex.
 3.50 to 4.10 1360—WQBC, Vicksburg, Miss.
 1420—KFIZ, Fond du Lac, Wis.
 1370—KMAC, San Antonio, Tex.
 4.00 to 4.20 580—WDBO, Orlando, Fla.
 1210—WEBQ, Harrisburg, Ill.
 1310—KFYO, Lubbock, Tex.
 4.10 to 4.30 1430—WNBR, Memphis, Tenn.
 1200—WMPC, Lapeer, Mich.
 1370—KONO, San Antonio, Tex.
 4.20 to 4.40 560—WQAM, Miami, Fla.
 1210—WHBF, Rock Island, Ill.
 4.30 to 4.50 1220—WDAE, Tampa, Fla.
 1500—WKBB, Muskegon, Mich.
 1370—KFJM, Grand Forks, N. D.
 4.40 to 5.00 1210—WCBS, Springfield, Ill.
 4.50 to 5.10 880—WCOC, Meridian, Miss.
 1500—WKBV, Richmond, Ind.
 5.00 to 5.20 1300—WIOD, Miami, Fla.
 1210—WTAX, Springfield, Ill.
 1230—KGBX, Springfield, Mo.
 5.10 to 5.30 1260—WTOC, Savannah, Ga.
 1370—WHBD, Mt. Orab, O.
 1420—KCMC, Texarkana, Ark.
 5.20 to 5.40 1210—WHBU, Anderson, Ind.
 5.30 to 5.50 1370—WIBM, Jackson, Mich.
 1420—KGFF, Shawnee, Okla.
 5.40 to 6.00 1210—WOMT, Manitowoc, Wis.
 1500—KNOW, Austin, Tex.

FIRST FRIDAY

3.00 to 3.20 1210—WJW, Akron, O.
 1310—KRMD, Shreveport, La.
 3.10 to 3.30 1420—WPAD, Paducah, Ky.
 1500—KOTN, Pine Bluff, Ark.
 3.20 to 3.40 1210—WCOL, Columbus, O.
 1310—KFXR, Oklahoma City, Okla.

3.30 to 3.50 1420—WELL, Battle Creek, Mich.
 1200—KGEK, Sterling, Colo.
 3.40 to 4.00 1210—WALK, Zanesville, O.
 1310—KFPL, Dublin, Tex.
 3.50 to 4.10 1420—WMBC, Detroit, Mich.
 1200—WCAT, Rapid City, S. D.
 4.00 to 4.20 1310—WDFD, Flint, Mich.
 1240—KGCU, Mandan, N. D.
 4.10 to 4.30 1200—WTFB, Cincinnati, O.
 1370—KWYO, Sheridan, Wyo.
 4.20 to 4.40 1450—WGAR, Cleveland, O.
 1240—KLPM, Minot, N. D.
 4.30 to 4.50 1200—WCLO, Janesville, Wis.
 1370—KGFG, Oklahoma City, Okla.
 4.40 to 5.00 1310—WCLS, Joliet, Ill.
 1420—KABC, San Antonio, Tex.
 4.50 to 5.10 1200—WJBL, Decatur, Ill.
 1370—KFJZ, Fort Worth, Tex.
 5.00 to 5.20 1500—WJBK, Detroit, Mich.
 1430—KWCR, Des Moines, Ia.
 5.10 to 5.30 1210—WIBU, Poynette, Wis.
 1500—KGFI, Corpus Christi, Tex.
 5.20 to 5.40 1370—WHDF, Calumet, Mich.
 1420—WLBK, Kansas City, Kan.
 5.30 to 5.50 1210—WCRW, Chicago, Ill.
 1500—KGKB, Tyler, Tex.
 5.40 to 6.00 1330—WTAQ, Eau Claire, Wis.
 1420—WMBH, Joplin, Mo.
 5.50 to 6.10 1210—WJIM, Lansing, Mich.

FIRST SATURDAY

2.10 to 2.30 1210—WBRB, Red Bank, N. J.
 2.20 to 2.40 1500—WWRL, Woodside, N. Y.
 2.30 to 2.50 1210—WGNV, Chester Twp. N. Y.
 2.40 to 3.00 1500—WMBQ, Brooklyn, N. Y.
 2.50 to 3.10 1210—WGBB, Freeport, N. Y.
 3.00 to 3.20 1430—WOKO, Albany, N. Y.
 1200—WJBC, Bloomington, Ill.
 1290—KTRH, Houston, Tex.
 3.10 to 3.30 1370—WGL, Fort Wayne, Ind.
 1210—KFPW, Fort Smith, Ark.
 3.20 to 3.40 810—WNYC, New York City.
 1200—WWAE, Hammond, Ind.
 1120—WTAW, College Station, Tex.
 3.30 to 3.50 1130—WVOV, New York City.
 1310—WLBC, Muncie, Ind.
 1210—KASA, Elk City, Okla.
 3.40 to 4.00 1180—WINS, New York City.
 1200—WFAM, South Bend, Ind.
 1270—KWLC, Decorah, Ia.
 3.50 to 4.10 1280—WCAP, Asbury Park, N. J.
 4.00 to 4.20 610—WJAY, Cleveland, O.
 1270—KGA, Decorah, Ia.
 4.10 to 4.30 1280—WTNJ, Trenton, N. J.
 1430—WBNS, Columbus, O.
 1210—KFVS, Cape Girardeau, Mo.
 4.20 to 4.40 920—WWJ, Detroit, Mich.
 780—KGHL, Billings, Mont.
 4.30 to 4.50 1380—KQV, Pittsburgh, Pa.
 1210—KDLR, Devils Lake, N. D.
 4.40 to 5.00 1420—WLA, Lexington, Ky.
 4.50 to 5.10 1380—WSMK, Dayton, O.
 1200—KFJX, Grand Junction, Colo.
 5.00 to 5.20 940—WAVE, Louisville, Ky.
 560—KFDM, Beaumont, Tex.
 5.10 to 5.30 1320—WADC, Akron, O.
 1210—KWTN, Watertown, S. D.

5.20 to 5.40 1340—WSPD, Toledo, O.
760—WEW, St. Louis, Mo.
5.30 to 5.50 1210—KWEA, Shreveport, La.
5.40 to 6.00 880—WSUI, Iowa City, Ia.
5.50 to 6.10 1230—KGGM, Albuquerque, N. M.

FIRST SUNDAY

3.00 to 3.20 1290—KLCN, Blytheville, Ark.
3.30 to 3.50 1440—KXYZ, Houston, Tex.
3.50 to 4.10 1400—KTUL, Tulsa, Okla.
4.00 to 4.20 1260—KPAC, Port Arthur, Tex.
4.10 to 4.30 1340—KGDY, Huron, S. D.
4.20 to 4.40 1260—KRGV, Weslaco, Tex.
4.50 to 5.10 890—KARK, Little Rock, Ark.
5.00 to 5.20 570—KGGK, Wichita, Falls, Tex.
5.20 to 5.40 1010—WNAD, Norman, Okla.
5.40 to 6.00 1260—KUOA, Fayetteville, Ark

CANADIAN FREQUENCY CHECKS

Following is a list of eastern Canadian stations required to transmit special test programs the 19th and 20th of each month for the CRC monitor at Ottawa. Time is A. M., and Eastern Standard:

1.11 to 1.19 CHNS, 930 kes., Halifax Nova Scotia.
1.21 to 1.29 CFCY, 630 kes., Charlottetown, P. E. I.
1.31 to 1.39 CJLS, 1310 kes., Yarmouth, Nova Scotia.
1.41 to 1.49 CRCS, 950 kes., Chicoutimi, Quebec.
1.51 to 1.59 CHSJ, 1120 kes., St. John, N. B.
2.01 to 2.09 CFNB, 550 kes., Fredericton, N. B.
2.11 to 2.19 CHRC, 580 kes., Quebec City, Quebec.
2.21 to 2.29 CFCH, 930 kes., North Bay, Ontario.
2.31 to 2.39 CFPL, 730 kes., London, Ontario.
2.41 to 2.49 CJKL, 1310 kes., Kirkland Lake, Ontario.
2.51 to 2.59 CKCL, 580 kes., Toronto, Ontario.
3.01 to 3.09 CKTB, 1200 kes., Port Dalhousie, Ontario.
3.11 to 3.19 CHNC, 1210 kes., New Carlisle, Quebec.
3.21 to 3.29 CKNC, 1410 kes., Toronto, Ontario.
3.31 to 3.39 CFCO, 600 kes., Chatham, Ontario.

THE MONTH'S CHANGES

DELETIONS

1210 WKFI Greenville, Miss.

FREQUENCIES

560 WIS, Columbia, S. C., from 1010
920 CMX, Havana, Cuba, from 900
910 XENT, Nuevo Laredo, Tamps. from 1110
1230 KGBX, Springfield, Mo., from 1310
1290 KTRH, Houston, Tex., from 1330
1375 CMCU, Havana, Cuba, from 1220
1410 CKGB, Timmins, Ont., from 1420
1410 CKNC, Toronto, Ont., from 1420
1435 CHGS, Summerside, P. E. I., from 1500
1450 COK, Havana, Cuba, from 1370

POWER

630 CFCY, Charlottetown, P. E. I., from 500 to 1000
920 WPEN, Phila., Pa., from 100 to 250
930 CHNS, Halifax, N. S., from 500 to 1000
990 XEAF, Nogales, Son., from 750 to 500
1320 KSO, Des Moines, Ia., from 250 to 500
1450 CFCT, Victoria, B. C., from 50 to 75

LOCATION

1020 KYW, to Philadelphia, Pa.
1430 KWCR, to Des Moines, Ia.
1500 WKEU, to Griffin, Ga.

NEW STATIONS AND CALLS

900 WMFI, New Haven, Conn.
1120 CKX, Brandon, Man.
1120 WMFH, Boston, Mass.
1210 WMFG, Hibbing, Minn.
1210 WPAX, Thomasville, Ga., (from WQDX)
1260 CFRN, Edmonton, Alta. (from CFTP).
1280 XEG, Ensenada, B. C., Mex.
1310 KIUF, Santa Fe, N. Mex.
1310 WMFF, Plattsburg, N. Y.
1370 KFRO, Longview, Tex.
1370 WMFD, Wilmington, N. C.
1380 WMFE, New Britain, Conn.
1420 KABR, Aberdeen, S. D.

OWNERSHIP

1210—WPAX, Thomasville, Ga., (was WQDX) to H. Wimpy.

AUSTRALIAN AND NEW ZEALAND STATIONS

| CALL | LOCATION | POWER | KCS. | CALL | LOCATION | POWER | KCS. |
|------|----------------------|-------|------|------|----------------------|-------|------|
| 2CO | Corowa, Aust. | 7500 | 560 | 3LO | Melbourne, Aust. | 4500 | 800 |
| 2YA | Wellington, N. Z. | 5000 | 570 | 2BL | Sydney, Aust. | 4000 | 855 |
| 7ZL | Hobart, Aust. | 3000 | 580 | 6PR | Perth, Aust. | 500 | 880 |
| 3AR | Melbourne, Aust. | 4500 | 610 | 4RK | Rockhampton, Aust. | 5000 | 910 |
| 4ZP | Invercargill, N. Z. | 500 | 620 | 3UZ | Melbourne, Aust. | 500 | 930 |
| 5CK | Crystal Brook, Aust. | 7500 | 630 | 2GB | Sydney, Aust. | 3000 | 949 |
| 1YA | Auckland, N. Z. | 500 | 650 | 2UE | Sydney, Aust. | 3000 | 1025 |
| 2FC | Sydney, Aust. | 4000 | 665 | 5PI | Crystal Brook, Aust. | 2000 | 1041 |
| 6WF | Perth, Aust. | 5000 | 690 | 2CA | Canberra, Aust. | 500 | 1050 |
| 3YA | Christchurch, N. Z. | 2500 | 720 | 2KY | Sydney, Aust. | 1000 | 1070 |
| 5CL | Adelaide, Aust. | 5000 | 730 | 6AM | Northam, Aust. | 500 | 1090 |
| 4QG | Brisbane, Aust. | 5000 | 760 | 2HD | Newcastle, Aust. | 500 | 1110 |
| 4YA | Dunedin, N. Z. | 2500 | 790 | | | | |

MICRO CHATS

Twenty-one years ago a runaway boy from New York dodged the hook long enough to make fifty cents in an amateur night show at the old Bowdoin Square theatre in Boston. The fifty cents looked big because Phil Baker was hungry and broke. Now, the famous jester is back in Boston to star in Lew Browne's musical revue, "Calling All Stars," which opened recently, and to continue his weekly broadcasts over NBC networks from that city. After that night twenty-one years ago, newsboy Phil went back to New York. Eventually he became secretary to Carl Laemmle at the old IMP film studios where Mary and Lottie Pickford and King Baggot were the reigning stars. He spent leisure hours at a movie house around the corner. One night the pianist was taken ill and Phil stepped in to pinch hit. That was his real start in the show business. Then into vaudeville with a chap named Ben Bernie changing over from piano to accordion. From that time his path led straight and sure through musical comedy, night clubs and movies to his present starring program.

Ralph Kirberry, (The Dream Singer) whose baritone solos are heard during the Treasure Chest broadcasts on the NBC-WEAF network Sundays at 2 P. M., EST, and each Thursday at noon, EST, may soon be singing on the other side of the Atlantic. Several English managers are negotiating with Kirberry for a London music hall engagement. They were attracted by his voice on phonograph recordings and discovering his radio and stage popularity in this country, decided to try to present him to their audiences.

Two elaborate three-hour radio shows, star-studded with operatic, movie, theatrical and literary figures, will be presented over the nationwide WABC-Columbia network as Christmas and New Year gifts to the radio listeners of the country by a leading automobile manufacturer. It is expected that 100 stations will carry these marathon revues to loud speakers in the homes of the nation. Lionel Barrymore, distinguished actor of stage and screen, will make his microphone debut as "Scrooge" in a condensed version of "A Christmas Carol" in the Christmas Day show. The addition of the three-hour period on New Year's day will constitute radio's greatest combination of concentrated time, talent and coverage

ever attempted by a single sponsor. This heralding of 1935, with entertainment galore, will come from New York, Chicago and Hollywood.



Tony Wons, friendly host of "The House by the Side of the Road" program on NBC-WEAF network every Sunday afternoon at 5:30, E.S.T.

Plans of the American Broadcasting System-WMCA network to broadcast a ghost story from what was said to be a haunted house went awry when the occupants of the place in Astoria, Long Island, denied it was overrun with ghosts. There had been reported the presence of a poltergeist and the spirit of a murdered woman and an investigator was sent out by the network to seek permission to make the broadcast. It is a rooming house and the landlady declared someone in the neighborhood was trying to ruin her business by circulating rumors of apparitions and strange happenings in her house. The investigator admits, however, that he wouldn't want to spend a night there.

Ben Bernie is one of the few entertainers who ad libs on the air. His monologue specialties, before, during and after song numbers are extemporaneous. Dialogue, with others participating in the NBC broadcasts, is first reduced to writing and then rehearsed,

but when the old maestro is alone at the mike he speaks as his fancy dictates.

Intended directly for listeners who are afflicted or confined to their beds, a new program called the "Shut-In Hour" is on the ABS-WMCA network every Monday, Wednesday and Friday from 1:30 to 1:45 P. M., EST.

An entirely new note in radio showmanship was successfully executed recently when Enoch Light and his orchestra, heard regularly over the Columbia network, abandoned all accepted audition methods, substituted originality, and won the most coveted winter engagement of the year at the Roney-Plaza, Miami Beach, Fla. He devised a plan after thirty-seven bands had auditioned and been turned down. Light figured the right time for his idea had arrived. First, instead of showing up at the studios in ordinary mufti like other bandsmen, Light appeared in full dress. Secondly, a half hour before the audition was scheduled to start, he roamed through Columbia's offices and studios recruiting young people to dance to his music. In other words, he had an idea that if he could create a ball-room illusion, with people actually dancing to and enjoying his music and with his band appearing just as they would on an important engagement, he would have a good chance of succeeding. He was right.

When Jane Froman, radio and Ziegfeld star, now being featured over the NBC-WEAF network each Sunday at 10:30 P. M., EST, comes to check up on her living expenses for the current year, there will be quite an item for long distance telephone calls. And the calls will all have been made to one destination, Columbia, Mo., for before Jane sings a single song on her program, she calls her mother at Columbia and sings the song over the telephone to her. Jane's mother makes suggestions and corrections and then, and only then, is Jane ready to sing that song on the air. Her mother was Anna Barcafer, a famed vocal teacher and coach, and it was she who started Jane singing when the young soprano was only six years old.

Behind those smooth and apparently effortless rhythms of Guy Lombardo's Royal Canadians during their Wednesday night NBC broadcasts is the story of hours of painstaking rehearsal. Every number must bear the stamp of the distinctive Lombardo style before it receives its final approval of Guy. This approval comes only after prolonged

experiment in placing the instruments in relation to the microphone after conferences with the studio engineer and after Guy himself has laid aside the baton and heard the tune in the studio monitoring room exactly as the listener will hear it. Back in the days when the Lombardo organization was being formed, even before Guy and his three brothers left their native Ontario, Canada, he found a tempo that appealed to him and all through the "hot" music years he held to it. Now it is the same style, so peculiarly his own, that distinguishes the Royal Canadians from other orchestras.

Wayne King, the waltz king of America, will reign for another year on NBC as his contract has been renewed. The renewal marks the fourth year on NBC networks under the same sponsor. He went on the air for the sponsor September 27, 1931, with one program and proved such a tremendous success that other broadcasts soon were added.



Gina Vanna, young operatic soprano, is featured soloist of "The House By the Side of the Road" program.

Elaine Melchior, the Ardala of "Buck Rogers in the 25th Century," was married to Leon F. Anspacher, New York business man, November 15, thereby proving that the villainess can win her man, too.

BROADCASTING STATIONS

(BY FREQUENCIES)

HEARD VERIFIED

540 Kilocycles 555.2 Meters

| | | | | | |
|--------------------------|--------------------------|------|-----------------------------|------------|------------------------------|
| <input type="checkbox"/> | <input type="checkbox"/> | CJRM | Moose Jaw, Sask. | 1000 | Jas. Richardson & Sons, Ltd. |
| <input type="checkbox"/> | <input type="checkbox"/> | HAL | Budapest, No. 1, Hungary | 546 120000 | |

550 Kilocycles 545.1 Meters

| | | | | | |
|--------------------------|--------------------------|------|----------------------|------------|------------------------------|
| <input type="checkbox"/> | <input type="checkbox"/> | CFNB | Fredericton, N. B. | 500 | Jas. S. Neill & Sons, Ltd. |
| <input type="checkbox"/> | <input type="checkbox"/> | KFUO | St. Louis, Mo. | 500 | Evangelical Lutheran Church. |
| <input type="checkbox"/> | <input type="checkbox"/> | KFYR | Bismarck, N. D. | 1000 | Mayer Broadcasting Co. |
| <input type="checkbox"/> | <input type="checkbox"/> | KOAC | Corvallis, Ore. | 1000 | Oregon State Agr. College. |
| <input type="checkbox"/> | <input type="checkbox"/> | KSD | St. Louis, Mo. | 500 | Pu'ttzer Publishing Co. |
| <input type="checkbox"/> | <input type="checkbox"/> | KTSA | San Antonio, Tex. | 1000 | Southwest Broadcasting Co. |
| <input type="checkbox"/> | <input type="checkbox"/> | TISO | San Jose, Costa Rica | 250 | P. F. Saborio. |
| <input type="checkbox"/> | <input type="checkbox"/> | WDEV | Waterbury, Vt. | 500 | Harry C. Whitehill. |
| <input type="checkbox"/> | <input type="checkbox"/> | WGR | Buffalo, N. Y. | 1000 | Buffalo Broadcasting Corp. |
| <input type="checkbox"/> | <input type="checkbox"/> | WKRC | Cincinnati, Ohio | 1000 | WKRC, Inc. |
| <input type="checkbox"/> | <input type="checkbox"/> | WSVA | Staunton, Va. | 500 | Marion K. Gilliam. |
| <input type="checkbox"/> | <input type="checkbox"/> | | Beromunster, Switz. | 556 120000 | |

560 Kilocycles 535.4 Meters

| | | | | | |
|--------------------------|--------------------------|------|----------------------|-------|-------------------------------------|
| <input type="checkbox"/> | <input type="checkbox"/> | KFDM | Beaumont, Texas | 500 | Sabine Broadcasting Co. |
| <input type="checkbox"/> | <input type="checkbox"/> | KLZ | Denver, Colo. | 1000 | Reynolds Radio Co., Inc. |
| <input type="checkbox"/> | <input type="checkbox"/> | KTAB | San Francisco, Cal. | 1000 | Associated Broadcasters, Ltd. |
| <input type="checkbox"/> | <input type="checkbox"/> | KWTO | Springfield, Mo. | 1000 | KGBX, Inc. |
| <input type="checkbox"/> | <input type="checkbox"/> | TGW | Guatemala City, Gua. | 10000 | Radio Nacional de Guatemala |
| <input type="checkbox"/> | <input type="checkbox"/> | WEI | Philadelphia, Pa. | 500 | WFI Broadcasting Co. |
| <input type="checkbox"/> | <input type="checkbox"/> | WIND | Gary, Ind. | 1000 | Johnson-Kennedy Broadcasting Corp. |
| <input type="checkbox"/> | <input type="checkbox"/> | WIS | Columbia, S. C. | 1000 | WIS, Inc. |
| <input type="checkbox"/> | <input type="checkbox"/> | WLIT | Philadelphia, Pa. | 500 | Lit Bros. Broadcasting System, Inc. |
| <input type="checkbox"/> | <input type="checkbox"/> | WNOX | Knoxville, Tenn. | 1000 | WNOX, Inc. |
| <input type="checkbox"/> | <input type="checkbox"/> | WQAM | Miami, Fla. | 1000 | Miami Broadcasting Co., Inc. |
| <input type="checkbox"/> | <input type="checkbox"/> | XEAO | Mexicali, Baja Cal. | 250 | Luis L. Castro. |

570 Kilocycles 526.0 Meters

| | | | | | |
|--------------------------|--------------------------|------|----------------------|------------|-------------------------------------|
| <input type="checkbox"/> | <input type="checkbox"/> | KGKO | Wichita Falls, Texas | 250 | Wichita Falls Broadcasting Co. |
| <input type="checkbox"/> | <input type="checkbox"/> | KMTR | Hollywood, Cal. | 1000 | KMTR Radio Corp. |
| <input type="checkbox"/> | <input type="checkbox"/> | KVI | Tacoma, Wash. | 1000 | Puget Sound Broadcasting Co. |
| <input type="checkbox"/> | <input type="checkbox"/> | WKBN | Youngstown, Ohio | 500 | WKBN Broadcasting Corp. |
| <input type="checkbox"/> | <input type="checkbox"/> | WMCA | New York, N. Y. | 500 | Federal Broadcasting Corp. |
| <input type="checkbox"/> | <input type="checkbox"/> | WNAX | Yankton, S. D. | 1000 | The House of Gurney, Inc. |
| <input type="checkbox"/> | <input type="checkbox"/> | WOSU | Columbus, Ohio | 750 | Ohio State University |
| <input type="checkbox"/> | <input type="checkbox"/> | WSYR | Syracuse, N. Y. | 250 | Central New York Broadcasting Corp. |
| <input type="checkbox"/> | <input type="checkbox"/> | WSYU | Syracuse, N. Y. | 250 | Syracuse University |
| <input type="checkbox"/> | <input type="checkbox"/> | WWNC | Asheville, N. C. | 1000 | Citizen Broadcasting Co., Inc. |
| <input type="checkbox"/> | <input type="checkbox"/> | 2YA | Wellington, N. Z. | 20000 | New Zealand Broadcasting Board. |
| <input type="checkbox"/> | <input type="checkbox"/> | | Stuttgart, Germany | 574 100000 | Rundfunk Stuttgart. |

580 Kilocycles 516.9 Meters

| | | | | | |
|--------------------------|--------------------------|------|--------------------|------|---------------------------------|
| <input type="checkbox"/> | <input type="checkbox"/> | CHRC | Quebec, Que. | 100 | CHRC, Ltd. |
| <input type="checkbox"/> | <input type="checkbox"/> | CKCL | Toronto, Ont. | 100 | Dominion Battery Co., Ltd. |
| <input type="checkbox"/> | <input type="checkbox"/> | CKUA | Edmonton, Alta. | 500 | University of Alberta. |
| <input type="checkbox"/> | <input type="checkbox"/> | KMJ | Fresno, Cal. | 500 | James McClatchy Co. |
| <input type="checkbox"/> | <input type="checkbox"/> | KSAC | Manhattan, Kans. | 500 | State College of Agriculture. |
| <input type="checkbox"/> | <input type="checkbox"/> | WCHS | Charleston, W. Va. | 500 | Charleston Broadcasting Corp. |
| <input type="checkbox"/> | <input type="checkbox"/> | WDBO | Orlando, Fla. | 250 | Orlando Broadcasting Co., Inc. |
| <input type="checkbox"/> | <input type="checkbox"/> | WIBW | Topeka, Kans. | 1000 | Topeka Broadcasting Assn., Inc. |
| <input type="checkbox"/> | <input type="checkbox"/> | WTAG | Worcester, Mass. | 500 | Worcester Telegram Pub. Co. |

590 Kilocycles 508.2 Meters

| | | | | | |
|--------------------------|--------------------------|------|-----------------------|-------|----------------------------------|
| <input type="checkbox"/> | <input type="checkbox"/> | KHQ | Spokane, Wash. | 1000 | Louis Wasmer, Inc. |
| <input type="checkbox"/> | <input type="checkbox"/> | LS10 | Buenos Aires, Arg. | 3500 | Casa America. |
| <input type="checkbox"/> | <input type="checkbox"/> | WEI | Boston, Mass. | 1000 | Edison Electric Illuminating Co. |
| <input type="checkbox"/> | <input type="checkbox"/> | WKZO | Kalamazoo, Mich. | 1000 | John E. Fetzer. |
| <input type="checkbox"/> | <input type="checkbox"/> | WOW | Omaha, Neb. | 1000 | Woodmen of the World. |
| <input type="checkbox"/> | <input type="checkbox"/> | XEPN | Piedras Negras, Coah. | 50000 | Piedras Negras Broadcasting Co. |

600 Kilocycles 499.7 Meters

| | | | | | |
|--------------------------|--------------------------|------|-------------------|------|---|
| <input type="checkbox"/> | <input type="checkbox"/> | CFCF | Montreal, Que. | 500 | Canadian Marconi Co. |
| <input type="checkbox"/> | <input type="checkbox"/> | CFCO | Chatham, Ont. | 100 | John Beardsall. |
| <input type="checkbox"/> | <input type="checkbox"/> | CJOR | Vancouver, B. C. | 500 | G. C. Chandler. |
| <input type="checkbox"/> | <input type="checkbox"/> | KFSD | San Diego, Cal. | 1000 | Airfan Radio Corp., Ltd. |
| <input type="checkbox"/> | <input type="checkbox"/> | WCAC | Storrs, Conn. | 500 | Connecticut State College. |
| <input type="checkbox"/> | <input type="checkbox"/> | WCAO | Baltimore, Md. | 500 | Monumental Radio Co. |
| <input type="checkbox"/> | <input type="checkbox"/> | WICC | Bridgeport, Conn. | 500 | Southern Connecticut Broadcasting Corp. |
| <input type="checkbox"/> | <input type="checkbox"/> | WMT | Waterloo, Iowa | 1000 | Waterloo Broadcasting Co. |
| <input type="checkbox"/> | <input type="checkbox"/> | WREC | Memphis, Tenn. | 1000 | WREC, Inc. |

610 Kilocycles 491.5 Meters

| | | |
|---|------|--------------------------|
| □ | CMCF | Havana, Cuba |
| □ | CX4 | Montevideo, Uruguay |
| □ | FQN | St. Pierre, Miquelon Is. |
| □ | KERC | San Francisco, Cal. |
| □ | KZRM | Manila, P. I. |
| □ | WDAF | Kansas City, Mo. |
| □ | WIP | Philadelphia, Pa. |
| □ | WJAY | Cleveland, Ohio |
| □ | XFX | Mexico City, D. F. |
| □ | 3AR | Melbourne, Australia |

| | |
|-------|------------------------------------|
| 250 | Raoul Karman. |
| 1000 | St. Pierre Radio Club. |
| 250 | Don Lee, Inc. |
| 1000 | Kansas City Star Co. |
| 50000 | Pennsylvania Broadcasting Co. |
| 1000 | Cleveland Radio Broadcasting Corp. |
| 500 | Secretaria de Educacion Publica. |
| 500 | National Broadcasting Service. |

620 Kilocycles 483.6 Meters

| | | |
|---|------|----------------------|
| □ | KGW | Portland, Ore. |
| □ | KTAR | Phoenix, Ariz. |
| □ | WFLA | Clearwater, Fla. |
| □ | WHJB | Greensburg, Pa. |
| □ | WLHZ | Bangor, Me. |
| □ | WSUN | St. Petersburg, Fla. |
| □ | WTMJ | Milwaukee, Wisc. |

| | |
|------|-------------------------------------|
| 1000 | Oregonian Publishing Co. |
| 1000 | KTAR Broadcasting Co. |
| 1000 | Florida West Coast Broadcasting Co. |
| 250 | Pennsylvania Radio Supply House |
| 500 | Maine Broadcasting Co., Inc. |
| 1000 | Florida West Coast Broadcasting Co. |
| 1000 | The Journal Co. |

630 Kilocycles 475.9 Meters

| | | |
|---|------|-------------------------|
| □ | CFCY | Charlottetown, P. E. I. |
| □ | CJGX | Yorkton, Sask. |
| □ | CKOV | Kelowna, B. C. |
| □ | CMBY | Havana, Cuba |
| □ | KFRU | Columbia, Mo. |
| □ | KGFX | Pierre, S. D. |
| □ | LS3 | Buenos Aires, Arg. |
| □ | WGBF | Evansville, Ind. |
| □ | WMAL | Washington, D. C. |
| □ | WOS | Jefferson City, Mo. |
| □ | WPRO | Providence, R. I. |
| □ | 5CK | Crystal Brook, Aus. |

| | |
|------|---------------------------------------|
| 1000 | Island Radio Broadcasting Co. |
| 500 | Dawson, Richardson Publications, Ltd. |
| 100 | Okanagan Broadcasters, Ltd. |
| 250 | Callajas-Estafani |
| 500 | KFRU, Inc. |
| 200 | Dana McNeil. |
| 4500 | "Mayo". |
| 500 | Evansville On The Air, Inc. |
| 250 | National Broadcasting Co., Inc. |
| 500 | State Highway Control. |
| 250 | Cherry & Webb Broadcasting Co. |
| 7500 | National Broadcasting Service. |

640 Kilocycles 468.2 Meters

| | | |
|---|------|-------------------|
| □ | KFI | Los Angeles, Cal. |
| □ | WAIU | Columbus, Ohio |
| □ | WOI | Ames, Iowa |
| □ | XEOX | Saltillo, Coah. |

| | |
|-------|-------------------------------|
| 50000 | Earle C. Anthony, Inc. |
| 500 | Associated Broadcasting Corp. |
| 5000 | Iowa State College. |
| 250 | |

650 Kilocycles 461.3 Meters

| | | |
|---|-----|---------------------|
| □ | CX5 | Montevideo, Uruguay |
| □ | WSM | Nashville, Tenn. |
| □ | 1YA | Auckland, N. Z. |

| | |
|-------|--|
| 5000 | Ministerio Instruccion Publica. |
| 50000 | National Life & Accident Insurance Co. |
| 500 | N. Z. Broadcasting Board. |

660 Kilocycles 454.3 Meters

| | | |
|---|------|--------------------|
| □ | WAAW | Omaha, Neb. |
| □ | WEAF | New York, N. Y. |
| □ | XEAL | Mexico City, D. F. |
| □ | | Cologne, Germany |

| | |
|--------|---------------------------------|
| 500 | Omaha Grain Exchange. |
| 50000 | National Broadcasting Co., Inc. |
| 1000 | Pan American Radio Co. |
| 100000 | Rundfunk Cologne |

670 Kilocycles 447.5 Meters

| | | |
|---|------|--------------------|
| □ | LS4 | Buenos Aires, Arg. |
| □ | WMAQ | Chicago, Ill. |

| | |
|-------|---------------------------------|
| 6000 | Juan G. Gonzales Speroni. |
| 50000 | National Broadcasting Co., Inc. |

680 Kilocycles 440.9 Meters

| | | |
|---|------|---------------------|
| □ | CMAF | Havana, Cuba |
| □ | CMCQ | Havana, Cuba |
| □ | HJN | Bogota, Colombia |
| □ | KFEQ | St. Joseph, Mo. |
| □ | KPO | San Francisco, Cal. |
| □ | RDN | San Salvador, E. S. |
| □ | VAS | Glace Bay, N. S. |
| □ | VOWR | St. John's, Nfd. |
| □ | WPTF | Raleigh, N. C. |

| | |
|-------|---------------------------------|
| 1000 | International Broadcasting Co. |
| 1000 | Andres Martinez. |
| 500 | Ministry of Posts. |
| 2500 | Scroggin & Co. Bank. |
| 50000 | National Broadcasting Co., Inc. |
| 500 | Republic of El Salvador. |
| 2000 | Canadian Marconi Co., Ltd. |
| 500 | Wesley United Church. |
| 1000 | Durham Life Insurance Co. |

690 Kilocycles 434.5 Meters

| | | |
|---|------|------------------|
| □ | CFRB | Toronto, Ont. |
| □ | CJCJ | Calgary, Alta. |
| □ | NAA | Arlington, Va. |
| □ | XET | Monterrey, N. L. |

| | |
|-------|--------------------------------------|
| 10000 | Rogers Majestic Co., Ltd. |
| 100 | Albertan Publishing Co., Ltd. |
| 1000 | United States Navy. |
| 500 | Cadena Radiodifusora Mexicana, S. A. |

700 Kilocycles 428.3 Meters

| | | |
|---|-----|------------------|
| □ | WLW | Cincinnati, Ohio |
|---|-----|------------------|

| | |
|--------|---------------------|
| 500000 | Crosley Radio Corp. |
|--------|---------------------|

HEARD VERIFIED

710 Kilocycles 422.3 Meters

| | | | |
|--------------------------|--------------------------|------|---------------------|
| <input type="checkbox"/> | <input type="checkbox"/> | KMPC | Beverly Hills, Cal. |
| <input type="checkbox"/> | <input type="checkbox"/> | KPCB | Seattle, Wash. |
| <input type="checkbox"/> | <input type="checkbox"/> | LS1 | Buenos Aires, Arg. |
| <input type="checkbox"/> | <input type="checkbox"/> | WOR | Newark, N. J. |
| <input type="checkbox"/> | <input type="checkbox"/> | XEN | Mexico City, D. F. |

| | |
|------|--------------------------------------|
| 500 | Beverly Hills Broadcasting Corp. |
| 250 | Queen City Broadcasting Co. |
| 5000 | Municipalidad de Buenos Aires. |
| 5000 | Bamberger Broadcasting Service, Inc. |
| 1000 | Cerveceria Modelo, S. A. |

720 Kilocycles 416.4 Meters

| | | | |
|--------------------------|--------------------------|------|---------------------|
| <input type="checkbox"/> | <input type="checkbox"/> | KZEG | Manila, P. I. |
| <input type="checkbox"/> | <input type="checkbox"/> | WGN | Chicago, Ill. |
| <input type="checkbox"/> | <input type="checkbox"/> | 3YA | Christchurch, N. Z. |

| | |
|-------|----------------------------|
| 1000 | Erlanger & Galingier, Inc. |
| 50000 | WGN, Inc. |
| 2500 | N. Z. Broadcasting Board. |

730 Kilocycles 410.7 Meters

| | | | |
|--------------------------|--------------------------|------|---------------------|
| <input type="checkbox"/> | <input type="checkbox"/> | CFPL | London, Ont. |
| <input type="checkbox"/> | <input type="checkbox"/> | CJCA | Edmonton, Alta. |
| <input type="checkbox"/> | <input type="checkbox"/> | CKAC | Montreal, Que. |
| <input type="checkbox"/> | <input type="checkbox"/> | CMK | Havana, Cuba |
| <input type="checkbox"/> | <input type="checkbox"/> | 5CL | Adelaide, Australia |

| | |
|------|-----------------------------------|
| 100 | Free Press & Printing Co. |
| 500 | Taylor & Pearson, Ltd. |
| 5000 | La Presse Publishing Co., Ltd. |
| 3150 | National Broadcasting Co. of Cuba |
| 5000 | National Broadcasting Service. |

740 Kilocycles 405.2 Meters

| | | | |
|--------------------------|--------------------------|------|-------------------|
| <input type="checkbox"/> | <input type="checkbox"/> | KMMJ | Clay Center, Neb. |
| <input type="checkbox"/> | <input type="checkbox"/> | KTRB | Modesto, Cal. |
| <input type="checkbox"/> | <input type="checkbox"/> | WHEB | Portsmouth, N. H. |
| <input type="checkbox"/> | <input type="checkbox"/> | WSB | Atlanta, Ga. |
| <input type="checkbox"/> | <input type="checkbox"/> | | Munich, Germany |

| | |
|------------|------------------------------------|
| 1000 | M. M. Johnson Co. |
| 250 | T. R. McTammany & W. H. Bates, Jr. |
| 250 | Granite State Broadcasting Corp. |
| 50000 | Atlanta Journal. |
| 745 100000 | Rundfunk Munich. |

750 Kilocycles 399.8 Meters

| | | | |
|--------------------------|--------------------------|------|---------------------|
| <input type="checkbox"/> | <input type="checkbox"/> | CMCW | Havana, Cuba |
| <input type="checkbox"/> | <input type="checkbox"/> | KGU | Honolulu, Hawaii |
| <input type="checkbox"/> | <input type="checkbox"/> | WJR | Detroit, Mich. |
| <input type="checkbox"/> | <input type="checkbox"/> | XEAM | Nuevo Laredo, Tams. |

| | |
|-------|---------------------------|
| 150 | Vilarino y Cervantes |
| 2500 | Advertiser Publishing Co. |
| 10000 | WJR, Inc. |
| 50 | Edificio Banco Longoria |

760 Kilocycles 394.5 Meters

| | | | |
|--------------------------|--------------------------|------|----------------------|
| <input type="checkbox"/> | <input type="checkbox"/> | KXA | Seattle, Wash. |
| <input type="checkbox"/> | <input type="checkbox"/> | WBAL | Baltimore, Md. |
| <input type="checkbox"/> | <input type="checkbox"/> | WEW | St. Louis, Mo. |
| <input type="checkbox"/> | <input type="checkbox"/> | WJZ | New York, N. Y. |
| <input type="checkbox"/> | <input type="checkbox"/> | XEBC | Agua Caliente, B. C. |
| <input type="checkbox"/> | <input type="checkbox"/> | 4QG | Brisbane, Australia |

| | |
|-------|-------------------------------------|
| 250 | American Radio Telephone Co. |
| 10000 | WBAL Broadcasting Co. |
| 1000 | St. Louis University |
| 50000 | National Broadcasting Co., Inc. |
| 5000 | Agua Caliente Broadcasting Station. |
| 5000 | National Broadcasting Service. |

770 Kilocycles 389.4 Meters

| | | | |
|--------------------------|--------------------------|------|---------------|
| <input type="checkbox"/> | <input type="checkbox"/> | KFAB | Lincoln, Neb. |
| <input type="checkbox"/> | <input type="checkbox"/> | WBBM | Chicago, Ill. |

| | |
|-------|-------------------------|
| 5000 | KFAB Broadcasting Co. |
| 25000 | WBBM Broadcasting Corp. |

780 Kilocycles 384.4 Meters

| | | | |
|--------------------------|--------------------------|-------|-------------------|
| <input type="checkbox"/> | <input type="checkbox"/> | CHWIK | Chilliwack, B. C. |
| <input type="checkbox"/> | <input type="checkbox"/> | CMBS | Havana, Cuba |
| <input type="checkbox"/> | <input type="checkbox"/> | KELW | Burling, Cal. |
| <input type="checkbox"/> | <input type="checkbox"/> | KFDY | Brookings, S. D. |
| <input type="checkbox"/> | <input type="checkbox"/> | KFQD | Anchorage, Alaska |
| <input type="checkbox"/> | <input type="checkbox"/> | KGHL | Billings, Mont. |
| <input type="checkbox"/> | <input type="checkbox"/> | KTM | Los Angeles, Cal. |
| <input type="checkbox"/> | <input type="checkbox"/> | WEAN | Providence, R. I. |
| <input type="checkbox"/> | <input type="checkbox"/> | WMC | Memphis, Tenn. |
| <input type="checkbox"/> | <input type="checkbox"/> | WTAR | Norfolk, Va. |
| <input type="checkbox"/> | <input type="checkbox"/> | XEYZ | Mexico, D. F. |
| <input type="checkbox"/> | <input type="checkbox"/> | | Leipzig, Germany |

| | |
|------------|------------------------------------|
| 100 | Chilliwack Broadcasting Co., Ltd. |
| 150 | Enrique Artalajo |
| 500 | Evening Herald Publishing Co. |
| 1000 | South Dakota State College. |
| 250 | Anchorage Radio Club, Inc. |
| 1000 | N. W. Auto Supply Co. |
| 500 | Evening Herald Publishing Co. |
| 500 | Shepard Broadcasting Service, Inc. |
| 1000 | WMC, Inc. |
| 500 | WTAR Radio Corp. |
| 10000 | Angel M. Diez. |
| 785 120000 | Rundfunk Leipzig. |

790 Kilocycles 379.5 Meters

| | | | |
|--------------------------|--------------------------|------|---------------------|
| <input type="checkbox"/> | <input type="checkbox"/> | CMJK | Camaguey, Cuba |
| <input type="checkbox"/> | <input type="checkbox"/> | KGO | San Francisco, Cal. |
| <input type="checkbox"/> | <input type="checkbox"/> | LR10 | Buenos Aires, Arg. |
| <input type="checkbox"/> | <input type="checkbox"/> | WGY | Schenectady, N. Y. |

| | |
|-------|---------------------------------|
| 150 | Comp. Cubana Nacl. de Radio. |
| 7500 | National Broadcasting Co., Inc. |
| 8000 | "Cultura." |
| 50000 | National Broadcasting Co., Inc. |

800 Kilocycles 374.8 Meters

| | | | |
|--------------------------|--------------------------|------|----------------------|
| <input type="checkbox"/> | <input type="checkbox"/> | TIGP | San Jose, Costa Rica |
| <input type="checkbox"/> | <input type="checkbox"/> | WBAP | Fort Worth, Texas |
| <input type="checkbox"/> | <input type="checkbox"/> | WFAA | Dallas, Texas |
| <input type="checkbox"/> | <input type="checkbox"/> | WTBO | Cumberland, Md. |
| <input type="checkbox"/> | <input type="checkbox"/> | 3LO | Melbourne, Australia |

| | |
|-------|--------------------------------|
| 75 | Gonzalo Pinto. |
| 50000 | Carter Publications, Inc. |
| 50000 | Morning News and Journal. |
| 250 | Associated Broadcast Corp. |
| 4500 | National Broadcasting Service. |

810 Kilocycles 370.2 Meters

| | | | |
|--------------------------|--------------------------|------|----------------------|
| <input type="checkbox"/> | <input type="checkbox"/> | WCCO | Minneapolis, Minn. |
| <input type="checkbox"/> | <input type="checkbox"/> | WNYC | New York, N. Y. |
| <input type="checkbox"/> | <input type="checkbox"/> | XFC | Aguascalientes, Ags. |

| | |
|-------|--------------------------|
| 50000 | N. W. Broadcasting, Inc. |
| 1000 | City of New York. |
| 350 | |

820 Kilocycles 365.6 Meters

| | | | |
|--------------------------|--------------------------|------|-----------------|
| <input type="checkbox"/> | <input type="checkbox"/> | WHAS | Louisville, Ky. |
| <input type="checkbox"/> | <input type="checkbox"/> | XEP | Mexico, D. F. |
| <input type="checkbox"/> | <input type="checkbox"/> | XETW | Mexico, D. F. |

| | |
|-------|-------------------------------|
| 50000 | Courier Journal. |
| 500 | Cia Difusora de Mexico, S. A. |
| 500 | Rafael M. Pena. |

HEARD VERIFIED

830 Kilocycles 361.2 Meters

| | | | |
|---|---|------|--------------------|
| □ | □ | CMC | Havana, Cuba. |
| □ | □ | KOA | Denver, Colo. |
| □ | □ | LR5 | Buenos Aires, Arg. |
| □ | □ | WEEU | Reading, Pa. |
| □ | □ | WHDH | Boston, Mass. |
| □ | □ | WRUF | Gainesville, Fla. |

| | |
|-------|------------------------|
| 500 | Radio Corp. of Cuba. |
| 50000 | General Electric Co. |
| 27000 | A. B. Dougall. |
| 1000 | Berks Broadcasting Co. |
| 1000 | Matheson Radio Co. |
| 5000 | State University. |

840 Kilocycles 356.9 Meters

| | | | |
|---|---|------|------------------|
| □ | □ | CFQC | Saskatoon, Sask. |
| □ | □ | CMQ | Havana, Cuba |
| □ | □ | CRCT | Toronto, Ont. |
| □ | □ | VOGY | St. John's, Nfd. |

| | |
|------|----------------------------------|
| 1000 | Electric Shop, Ltd. |
| 5000 | Jose Fernandez. |
| 5000 | Canadian Radio Broadcasting Com. |
| 400 | Newfoundland Broadcasting Co. |

850 Kilocycles 352.7 Meters

| | | | |
|---|---|------|-------------------|
| □ | □ | KIEV | Glendale, Cal. |
| □ | □ | WWL | New Orleans, La. |
| □ | □ | WWPA | Clarion, Pa. |
| □ | □ | XEXX | Mexico, D. F. |
| □ | □ | 2BL | Sydney, Australia |

| | |
|-------|--------------------------------|
| 250 | Cannon System, Ltd. |
| 10000 | Loyola University. |
| 250 | Clarion Broadcasting Co. |
| 500 | |
| 5000 | National Broadcasting Service. |

860 Kilocycles 348.6 Meters

| | | | |
|---|---|------|------------------|
| □ | □ | CMCX | Havana, Cuba |
| □ | □ | WABC | New York, N. Y. |
| □ | □ | WBOQ | New York, N. Y. |
| □ | □ | WHB | Kansas City, Mo. |
| □ | □ | XEMO | Tijuana, B. C. |

| | |
|-------|-----------------------------|
| 150 | New Station. |
| 50000 | Atlantic Broadcasting Corp. |
| 50000 | Atlantic Broadcasting Co. |
| 500 | WHB Broadcasting Co. |
| 2500 | Radio Station XEMO. |

870 Kilocycles 344.6 Meters

| | | | |
|---|---|------|---------------|
| □ | □ | WENR | Chicago, Ill. |
| □ | □ | WLS | Chicago, Ill. |

| | |
|-------|-------------------------------|
| 50000 | Great Lakes Broadcasting Co. |
| 50000 | Agricultural Broadcasting Co. |

880 Kilocycles 340.7 Meters

| | | | |
|---|---|-------|--------------------|
| □ | □ | CFJC | Kamloops, B. C. |
| □ | □ | CRCO | Ottawa, Ont. |
| □ | □ | KFKA | Greeley, Colo. |
| □ | □ | KLX | Oakland, Cal. |
| □ | □ | KPOF | Denver, Colo. |
| □ | □ | WCOC | Meridian, Miss. |
| □ | □ | WGBI | Scranton, Pa. |
| □ | □ | WPHR | Petersburg, Va. |
| □ | □ | WQAN | Scranton, Pa. |
| □ | □ | WSUI | Iowa City, Iowa |
| □ | □ | YV2RC | Caracas, Venezuela |

| | |
|------|------------------------------------|
| 100 | Review Publishing Co., Ltd. |
| 1000 | Canadian Radio Com. |
| 500 | Mid-Western Radio Corp. |
| 1000 | Tribune Publishing Co. |
| 500 | Pillar of Fire. |
| 500 | Mississippi Broadcasting Co., Inc. |
| 500 | Scranton Broadcasters, Inc. |
| 500 | WLBG, Inc. |
| 250 | Scranton Times. |
| 500 | State University of Iowa. |
| 100 | |

890 Kilocycles 336.9 Meters

| | | | |
|---|---|------|----------------------|
| □ | □ | CJIC | S. Ste. Marie, Ont. |
| □ | □ | KARK | Little Rock, Ark. |
| □ | □ | KFNF | Shenandoah, Iowa |
| □ | □ | KUSD | Vermillion, S. D. |
| □ | □ | WBAA | West Lafayette, Ind. |
| □ | □ | WGST | Atlanta, Ga. |
| □ | □ | WILL | Urbana, Ill. |
| □ | □ | WJAR | Providence, R. I. |
| □ | □ | WMMN | Fairmont, W. Va. |
| □ | □ | XEW | Mexico City, D. F. |

| | |
|-------|--------------------------------|
| 100 | J. G. Hyland & J. C. Whitby. |
| 250 | Arkansas Radio & Equipment Co. |
| 500 | Henry Field Co. |
| 500 | University of South Dakota. |
| 1000 | Purdue University. |
| 500 | Georgia School of Technology. |
| 250 | University of Illinois. |
| 500 | Outlet Co. |
| 250 | A. M. Rowe, Inc. |
| 50000 | Cadena Radiodifusora Mexicana. |

900 Kilocycles 333.1 Meters

| | | | |
|---|---|------|----------------------|
| □ | □ | KGA | Spokane, Wash. |
| □ | □ | KGBU | Ketchikan, Alaska |
| □ | □ | KHJ | Los Angeles, Cal. |
| □ | □ | KSEI | Pocatello, Idaho |
| □ | □ | WBEN | Buffalo, N. Y. |
| □ | □ | WJAX | Jacksonville, Fla. |
| □ | □ | WKY | Oklahoma City, Okla. |
| □ | □ | WLBL | Stevens Point, Wisc. |
| □ | □ | WMFI | New Haven, Conn. |
| □ | □ | | Hamburg, Germany |

| | |
|--------|---|
| 5000 | N. W. Broadcasting Co., Inc. |
| 500 | Alaska Radio & Service Corp. |
| 1000 | Don Lee Broadcasting System. |
| 250 | Radio Service Corp. |
| 1000 | Buffalo Evening News. |
| 1000 | City of Jacksonville. |
| 1000 | Oklahoma Publishing Co. |
| 2500 | Wisconsin Dept. of Agriculture & Markets. |
| 500 | Patrick H. Goode. |
| 100000 | Nordischer Rundfunk. |

910 Kilocycles 329.6 Meters

| | | | |
|---|---|------|----------------------|
| □ | □ | CJAT | Trill, B. C. |
| □ | □ | CMHW | Cienfuegos, Cuba |
| □ | □ | CRCM | Montreal, Que. |
| □ | □ | LR2 | Buenos Aires, Arg. |
| □ | □ | TICR | San Jose, Costa Rica |
| □ | □ | XENT | Nuevo Laredo, Tamps. |
| □ | □ | 4RK | Rockhampton, Aus. |
| □ | □ | | Toulouse, France |

| | |
|-------|---------------------------------|
| 250 | Kootenay Broadcasting Co., Ltd. |
| 100 | |
| 5000 | Canadian Radio Com. |
| 8500 | Alfredo Schroeder. |
| 75 | Government of Costa Rica. |
| 70000 | Cia Industrial Universal, S. A. |
| 5000 | National Broadcasting Service. |
| 60000 | "Radio Toulouse" |

HEARD VERIFIED

920 Kilocycles 325.9 Meters

| | | |
|---|------|-----------------------|
| □ | CMX | Havana, Cuba |
| □ | HHK | Port-au-Prince, Haiti |
| □ | KFEL | Denver, Colo. |
| □ | KOMO | Seattle, Wash. |
| □ | KPRC | Houston, Texas |
| □ | KYOD | Denver, Colo. |
| □ | WAAF | Chicago, Ill. |
| □ | WBSO | Boston, Mass. |
| □ | WPEN | Philadelphia, Pa. |
| □ | WRAX | Philadelphia, Pa. |
| □ | WSPA | Spartanburg, S. C. |
| □ | WWJ | Detroit, Mich. |
| □ | XEAA | Mexicali, B. C. |
| □ | XEKL | Leon, Guan. |

| | |
|------|------------------------------------|
| 1000 | Casa "Lavin." |
| 1000 | Haitian Government. |
| 500 | Eugene O'Fallon. |
| 1000 | Fishers Blend Station. |
| 1000 | Houston Printing Co. |
| 500 | Colorado Radio Corp. |
| 500 | Drovers Journal. |
| 500 | Broadcasting Service Organization. |
| 250 | Wm. Penn Broadcasting Co. |
| 250 | WRAX Broadcasting Co. |
| 1000 | Virgil V. Evans. |
| 1000 | Evening News Association. |
| 200 | |
| 500 | |

930 Kilocycles 322.4 Meters

| | | |
|---|------|--------------------|
| □ | CFAC | Calgary, Alta. |
| □ | CFCH | North Bay, Ont. |
| □ | CFLC | Prescott, Ont. |
| □ | CHNS | Halifax, N. S. |
| □ | CKPC | Brantford, Ont. |
| □ | CKPR | Fort William, Ont. |
| □ | CMJF | Camaguey, Cuba |
| □ | CMW | Havana, Cuba |
| □ | KGBZ | York, Neb. |
| □ | KMA | Sherandoah, Iowa |
| □ | KROW | Oakland, Cal. |
| □ | WBRC | Birmingham, Ala. |
| □ | WDBJ | Roanoke, Va. |

| | |
|------|-----------------------------------|
| 100 | Calgary Herald. |
| 100 | Northern Broadcasting Co., Ltd. |
| 100 | Radio Association of Prescott. |
| 1000 | Maritime Broadcasting Co., Ltd. |
| 100 | Telephone City Broadcast, Ltd. |
| 50 | Dougall Motor Co., Ltd. |
| 200 | John L. Stowers. |
| 1400 | Troncosa y Gil. |
| 1000 | KGBZ Broadcasting Corp. |
| 1000 | Earl E. May Seed Co. |
| 500 | Educational Broadcasting Corp. |
| 1000 | Birmingham Broadcasting Co., Inc. |
| 1000 | Times World Corp. |

940 Kilocycles 319.0 Meters

| | | |
|---|------|--------------------|
| □ | CMKM | Manzanillo, Cuba |
| □ | KOIN | Portland, Ore. |
| □ | VOAS | St. John's, Nfld. |
| □ | WAAT | Jersey City, N. J. |
| □ | WAVE | Louisville, Ky. |
| □ | WCSH | Portland, Me. |
| □ | WDAY | Fargo, N. D. |
| □ | WHA | Madison, Wisc. |
| □ | XEFO | Mexico City, D. F. |

| | |
|------|--------------------------------------|
| 100 | Jesus Armeste, Merchant y Figuerado. |
| 1000 | KOIN, Inc. |
| 100 | Ayre & Sons, Ltd. |
| 500 | Bremer Broadcasting Corp. |
| 1000 | WAVE, Inc. |
| 1000 | Congress Square Hotel Co. |
| 1000 | WDAY, Inc. |
| 1000 | University of Wisconsin. |
| 5000 | Partido Nael. Revolucionario. |

950 Kilocycles 315.6 Meters

| | | |
|---|------|--------------------|
| □ | CMCD | Havana, Cuba |
| □ | CMHD | Calbarica, Cuba |
| □ | CRCS | Chileontimi, Que. |
| □ | KFWB | Hollywood, Cal. |
| □ | KMBC | Kansas City, Mo. |
| □ | LB3 | Buenos Aires, Arg. |
| □ | VONF | St. John's Nfd. |
| □ | WRC | Washington, D. C. |
| □ | | Breslau, Germany |

| | |
|-------|---------------------------------|
| 250 | |
| 250 | Manuel Alvarez. |
| 100 | Canadian Radio Commission. |
| 1000 | Warner Bros. |
| 1000 | Midland Broadcasting Co. |
| 12000 | "Nacional." |
| 5000 | Dominion Broadcasting Co., Ltd. |
| 500 | National Broadcasting Co., Inc. |
| 60000 | Schlessische Funkstude, A. G. |

960 Kilocycles 312.3 Meters

| | | |
|---|-------|-----------------|
| □ | OKY | Winnipeg, Man. |
| □ | CMJL | Camaguey, Cuba |
| □ | XEAW | Reynosa, Tamps. |
| □ | YVIRO | Caracas, Venez. |
| □ | | Paris, France |

| | |
|--------|---------------------------------------|
| 15000 | Manitoba Telephone System. |
| 50 | Enrique Artime. |
| 10000 | International Broadcasting Co., S. A. |
| 5000 | Cia Ama Almacen Americana. |
| 100000 | Poste Parisien. |

970 Kilocycles 309.1 Meters

| | | |
|---|------|----------------|
| □ | CMGF | Matanzas, Cuba |
| □ | KJR | Seattle, Wash. |
| □ | WCFL | Chicago, Ill. |
| □ | WIBG | Glenside, Pa. |
| □ | XES | Tampico, Tams. |

| | |
|------|------------------------------|
| 100 | Bernabe R. de la Torre. |
| 5000 | Fishers Blend Station, Inc. |
| 1500 | Chicago Federation of Labor. |
| 100 | WIBG, Inc. |
| 250 | Fernando Sada. |

980 Kilocycles 305.9 Meters

| | | |
|---|------|------------------|
| □ | KDKA | Pittsburgh, Pa. |
| □ | XEAE | Mexicali, B. C. |
| □ | XEU | Veraacruz, Vera. |

| | |
|-------|----------------------------------|
| 50000 | Westinghouse Electric & Mfg. Co. |
| 200 | |
| 250 | Fernando Pazos Sosa. |

990 Kilocycles 302.8 Meters

| | | |
|---|------|--------------------|
| □ | LB4 | Buenos Aires, Arg. |
| □ | WBZ | Boston, Mass. |
| □ | WBZA | Springfield, Mass. |
| □ | XEAF | Nogales, Son. |
| □ | XER | Mexico City, D. F. |

| | |
|-------|----------------------------------|
| 20000 | "Radio Splendid." |
| 50000 | Westinghouse Electric & Mfg. Co. |
| 1000 | Westinghouse Electric & Mfg. Co. |
| 500 | Francisco G. Elias. |
| 100 | Arturo Martinez. |

HEARD VERIFIED

1000 Kilocycles 299.8 Meters

| | | | | | |
|---|---|------|-------------------|-------|--------------------------|
| □ | □ | CMBZ | Havana, Cuba | 100 | Manuel y G. Salas |
| □ | □ | KFVD | Los Angeles, Cal. | 250 | E. L. Cord. |
| □ | □ | WHO | Des Moines, Iowa | 50000 | Central Broadcasting Co. |

1010 Kilocycles 296.9 Meters

| | | | | | |
|---|---|------|----------------------|------|----------------------------------|
| □ | □ | CHML | Hamilton, Ont. | 50 | Maple Leaf Radio Co., Ltd. |
| □ | □ | CHWC | Regina, Sask. | 500 | R. H. Williams & Sons, Ltd. |
| □ | □ | CKCD | Vancouver, B. C. | 100 | Vancouver Daily Province. |
| □ | □ | CKCK | Regina, Sask. | 500 | Leader-Post, Ltd. |
| □ | □ | CKCO | Ottawa, Ont. | 100 | Dr. G. M. Geldert. |
| □ | □ | CKIC | Wolfville, N. S. | 50 | Acadia University. |
| □ | □ | CKWX | Vancouver, B. C. | 100 | Western Broadcasting Co., Ltd. |
| □ | □ | CMJO | Ciego de Avila, Cuba | 50 | Jose M. Rey. |
| □ | □ | KGGF | Coffeyville, Kans. | 1000 | H. J. Powell & Stanley Platz. |
| □ | □ | KQW | San Jose, Cal. | 1000 | Pacific Agricultural Foundation. |
| □ | □ | WHN | New York, N. Y. | 1000 | Marcus Loew Booking Agency. |
| □ | □ | WNAD | Norman, Okla. | 1000 | University of Oklahoma. |

1020 Kilocycles 293.9 Meters

| | | | | | |
|---|---|-----|-------------------|-------|----------------------------------|
| □ | □ | KYW | Philadelphia, Pa. | 10000 | Westinghouse Electric & Mfg. Co. |
| □ | □ | XEJ | Juarez, Chih. | 250 | Juan G. Buttner. |

1030 Kilocycles 291.1 Meters

| | | | | | |
|---|---|------|--------------------|-------|-------------------------------------|
| □ | □ | CFCN | Calgary, Alta. | 10000 | W. W. Grant & H. G. Love. |
| □ | □ | CKLW | Windsor, Ont. | 5000 | Western Ont. Broadcasting Co., Ltd. |
| □ | □ | CMBC | Havana, Cuba | 150 | Domingo Fernandez. |
| □ | □ | CMHI | Santa Clara, Cuba | 150 | Lavis y Paz. |
| □ | □ | CMKC | Santiago, Cuba | 150 | Pinol Batlle y Cia. |
| □ | □ | LR9 | Buenos Aires, Arg. | 5000 | Gregorio Echaverria. |
| □ | □ | XEB | Mexico City, D. F. | 10000 | El Buen Tono, S. A. |
| □ | □ | | Hellsburg, Germany | 60000 | Deutsche Stunde in Bayern. |

1040 Kilocycles 288.3 Meters

| | | | | | |
|---|---|------|---------------------|--------|---------------------------------|
| □ | □ | CMGH | Matanzas, Cuba | 15 | Octavui y Julio Alvarez. |
| □ | □ | KRLD | Dallas, Tex. | 10000 | KRLD Radio Corp. |
| □ | □ | KWJJ | Portland, Ore. | 500 | KWJJ Broadcast Co. |
| □ | □ | WKAR | East Lansing, Mich. | 1000 | Michigan State College. |
| □ | □ | WTIC | Hartford, Conn. | 50000 | Travelers Broadcasting Service. |
| □ | □ | | Rennes, France | 120000 | PTT. |

1050 Kilocycles 285.5 Meters

| | | | | | |
|---|---|------|---------------------|-------|--------------------------------------|
| □ | □ | CMJG | Camaguey, Cuba | 50 | Jose Antonio Lefran. |
| □ | □ | CRCK | Quebec, P. of Q. | 1000 | Canadian Radio Commission. |
| □ | □ | CX26 | Montevideo, Uruguay | 2000 | Figuera, Canepa y Cia. |
| □ | □ | KFBI | Abilene, Kans. | 5000 | Farmers & Bankers Life Insurance Co. |
| □ | □ | KNX | Hollywood, Cal. | 50000 | Western Broadcast Co., Inc. |

1060 Kilocycles 282.8 Meters

| | | | | | |
|---|---|------|-------------------|-------|------------------------|
| □ | □ | CMCB | Havana, Cuba | 150 | Metropolitan Building. |
| □ | □ | KTHS | Hot Springs, Ark. | 10000 | Chamber of Commerce. |
| □ | □ | WBAL | Baltimore, Md. | 10000 | WBAL Broadcasting Co. |
| □ | □ | WJAG | Norfolk, Neb. | 1000 | Norfolk Daily News. |
| □ | □ | XEA | Guadalajara, Jal. | 125 | Alberto Palos Souza. |

1070 Kilocycles 280.2 Meters

| | | | | | |
|---|---|------|---------------------|-------|--------------------------------|
| □ | □ | KJBS | San Francisco, Cal. | 100 | Julius Brunton & Sons Co. |
| □ | □ | WCAZ | Carthage, Ill. | 100 | Superior Broadcasting Service. |
| □ | □ | WDZ | Tuscola, Ill. | 100 | James L. Bush. |
| □ | □ | WTAM | Cleveland, Ohio | 50000 | National Broadcasting Co. |

1080 Kilocycles 277.6 Meters

| | | | | | |
|---|---|------|------------------|-------|------------------------|
| □ | □ | WBT | Charlotte, N. C. | 50000 | Station WBT, Inc. |
| □ | □ | WGBD | Waukegan, Ill. | 5000 | Wilbur Glenn Voliva. |
| □ | □ | WMBI | Chicago, Ill. | 5000 | Moody Bible Institute. |
| □ | □ | XEMA | Tampico, Tams. | 50 | Manuel M. Pier |

1090 Kilocycles 275.1 Meters

| | | | | | |
|---|---|------|---------------------|-------|------------------------------|
| □ | □ | CMGI | Colon, Cuba | 30 | Armando Linanza. |
| □ | □ | CX28 | Montevideo, Uruguay | 2000 | Miquel Biere. |
| □ | □ | KMOX | St. Louis, Mo. | 50000 | The Voice of St. Louis, Inc. |
| □ | □ | WESG | Elmira, N. Y. | 1000 | Elmira Star Gazette, Inc. |

HEARD VERIFIED

1100 Kilocycles 272.6 Meters

| | | | |
|-------|-----------------------|-------|----------------------------------|
| CMCY | Havana, Cuba | 500 | M. D. Autran. |
| CMHA | Sagua la Grande, Cuba | 50 | Abelardo Menocal. |
| CRCV | Vancouver, B. C. | 1000 | Canadian Radio Com. |
| KGDM | Stockton, Cal. | 250 | E. F. Pepper. |
| KWKH | Shreveport, La. | 10000 | International Broadcasting Corp. |
| TIRCA | San Jose, Costa Rica | 500 | Perry Girton. |
| WLWL | New York, N. Y. | 5000 | Society of St. Paul. |
| WPG | Atlantic City, N. J. | 5000 | Columbia Broadcasting System. |
| XEFG | Mexico City, D. F. | 250 | Ricardo Gonzales Montero. |

1110 Kilocycles 270.1 Meters

| | | | |
|------|--------------------|------|---------------------------------------|
| KSOO | Sioux Falls, S. D. | 1000 | Sioux Falls Broadcasting Association. |
| LS5 | Buenos Aires, Arg. | 5000 | Rafael Diaz. |
| WRVA | Richmond, Va. | 5000 | Larus & Bro. Co., Inc. |

1120 Kilocycles 267.7 Meters

| | | | |
|------|------------------------|-----|----------------------------------|
| CHLP | Montreal, Que. | 100 | La Patrie Publishing Co., Ltd. |
| CHSJ | St. John, N. B. | 100 | N. B. Broadcasting Corp., Ltd. |
| CKOC | Hamilton, Ont. | 500 | Wentworth Radio Broadcasting Co. |
| CKX | Brandon, Man. | 100 | |
| CMCG | Havana, Cuba | 150 | E. Pareda. |
| CMHJ | Cienfuegos, Cuba | 60 | Victorino Lopez Hontanon. |
| KFIO | Spokane, Wash. | 100 | Spokane Broadcasting Co. |
| KFSG | Los Angeles, Cal. | 500 | Echo Park Evang. Assn. |
| KRKC | Los Angeles, Cal. | 500 | Radio Broadcasters, Inc. |
| KRSC | Seattle, Wash. | 100 | Radio Sales Corp. |
| WDEL | Wilmington, Del. | 250 | WDEL, Inc. |
| WISN | Milwaukee, Wisc. | 250 | American Radio News Corp. |
| WMFH | Boston, Mass. | 500 | Joseph M. Kirby. |
| WTAW | College Station, Texas | 500 | Agric. & Mech. College. |

1130 Kilocycles 265.3 Meters

| | | | |
|------|----------------------|-------|----------------------------------|
| KSL | Salt Lake City, Utah | 50000 | Radio Service Corp. of Utah. |
| WJJD | Chicago, Ill. | 20000 | WJJD, Inc. |
| WOV | New York, N. Y. | 1000 | International Broadcasting Corp. |
| SBH | Horby, Sweden | 10000 | Royal Board of Telegraphs. |

1140 Kilocycles 263.0 Meters

| | | | |
|------|------------------|-------|--------------------------|
| KVOO | Tulsa, Okla. | 25000 | Southwestern Sales Corp. |
| WAPI | Birmingham, Ala. | 5000 | WAPI Broadcasting Corp. |
| IITO | Turin, Italy | 7000 | E. I. A. R. |

1150 Kilocycles 260.7 Meters

| | | | |
|------|-----------------------|-------|---------------------------------|
| CMBG | Havana, Cuba | 225 | John L. Stowers. |
| CMJH | Ciego de Avilla, Cuba | 50 | Luis Marauri Mendosa. |
| LR8 | Buenos Aires, Arg. | 5000 | C. R. Sherrer y Cia. |
| WHAM | Rochester, N. Y. | 50000 | Stromberg-Carlson Tel. Mfg. Co. |
| XEH | Monterrey, N. L. | 250 | Tarnava y Cia. |
| XEWZ | Mexico, D. F. | 100 | Medellin e Insurgentes. |

1160 Kilocycles 258.5 Meters

| | | | |
|------|-------------------|-------|--|
| WOWO | Fort Wayne, Ind. | 10000 | Main Auto Supply Co. |
| WWVA | Wheeling, W. Va. | 5000 | W. Va. Broadcasting Corp. |
| XED | Guadalajara, Jal. | 500 | Radiofonografica de Guadalajara, S. A. |

1170 Kilocycles 256.3 Meters

| | | | |
|------|-------------------|-------|-----------------------|
| CMJE | Camaguey, Cuba | 50 | Manuel Fernandez. |
| COA | Havana, Cuba | 500 | New Station. |
| WCAU | Philadelphia, Pa. | 50000 | WCAU Broadcasting Co. |

1180 Kilocycles 254.1 Meters

| | | | |
|------|--------------------|-------|-------------------------------|
| KEX | Portland, Ore. | 5000 | Western Broadcasting Co. |
| KOB | Albuquerque, N. M. | 10000 | Albuquerque Journal. |
| WDGY | Minneapolis, Minn. | 1000 | Dr. Geo. W. Young. |
| WINS | New York, N. Y. | 1000 | Am. Radio News Corp. |
| WMAZ | Macon, Ga. | 1000 | Southeastern Broadcasting Co. |
| XEFA | Mexico, D. F. | 500 | Eduardo Limon Segui. |

1190 Kilocycles 252.0 Meters

| | | | |
|-------|-------------------------|-------|---------------------------|
| LS2 | Buenos Aires, Arg. | 50000 | Radio Prieto. |
| VE9EK | Montmagny, Que. | 10 | J. A. Marquis. |
| WATR | Waterbury, Conn. | 100 | The WATR Co., Inc. |
| WOAI | San Antonio, Texas | 50000 | Southern Industries, Inc. |
| WSAZ | Huntington, W. Va. | 1000 | WSAZ, Inc. |
| | Frankfurt-am-Main, Ger. | 17000 | |

1200 Kilocycles 249.9 Meters

| | | | | |
|--|-------|-----------------------|-----|------------------------------------|
| | CHAB | Moose Jaw, Sask. | 100 | Moose Jaw Radio Assn. |
| | CKTB | St. Catharines, Ont. | 100 | E. T. Sandell. |
| | CMCJ | Havana, Cuba | 500 | Rafael Rodriguez |
| | KADA | Ada, Okla. | 100 | C. C. Morris. |
| | KBTM | Jonesboro, Ark. | 100 | J. P. Beard. |
| | KFJB | Marshalltown, Iowa | 100 | Marshall Electric Co. |
| | KFXD | Nampa, Idaho | 100 | Frank E. Hurt. |
| | KFXJ | Grand Junction, Colo. | 100 | Western Slope Broadcasting Co. |
| | KGDE | Fergus Falls, Minn. | 100 | C. L. Jaren. |
| | KGEK | Sterling, Colo. | 100 | Elmer G. Beehler. |
| | KGEJ | Los Angeles, Cal. | 100 | Ben S. McGlashan. |
| | KGHI | Little Rock, Ark. | 100 | Lloyd Judd Co. |
| | KGVO | Missoula, Mont. | 100 | Mosby's Inc. |
| | KMLB | Monroe, La. | 100 | Liner's Broadcasting Station, Inc. |
| | KOOS | Marshfield, Ore. | 100 | H. H. Hanseth |
| | KSUN | Lowell, Ariz. | 100 | Copper Electric Co., Inc |
| | KVOS | Bellingham, Wash. | 100 | KVOS, Inc. |
| | KWVG | Stockton, Cal. | 100 | McClatchy Newspapers, Inc. |
| | WABI | Bangor, Me. | 100 | 1st Universalist Society. |
| | WBBZ | Ponca City, Okla. | 100 | Estate of C. L. Carrell, deceased. |
| | WBHS | Huntsville, Ala. | 100 | Radio Station WBHS, Inc. |
| | WBNO | New Orleans, La. | 100 | Samuel D. Reeks. |
| | WCAT | Rapid City, S. D. | 100 | State School of Mines. |
| | WCAX | Burlington, Vt. | 100 | Burlington Daily News, Inc. |
| | WCLO | Janesville, Wisc. | 100 | Gazette Printing Co., Inc. |
| | WFAM | South Bend, Ind. | 100 | South Bend Tribune. |
| | WFBE | Cincinnati, Ohio | 100 | WFBE, Inc. |
| | WHBC | Canton, Ohio | 100 | Edw. P. Graham. |
| | WHBY | Green Bay, Wisc. | 100 | WHBY, Inc. |
| | WIBX | Utica, N. Y. | 100 | WIBX, Inc. |
| | WIL | St. Louis, Mo. | 100 | Missouri Broadcasting Corp. |
| | WJBC | Bloomington, Ill. | 100 | |
| | WJBL | Decatur, Ill. | 100 | Commodore Broadcasting, Inc. |
| | WJBW | New Orleans, La. | 100 | C. C. Carlson. |
| | WKBO | Harrisburg, Pa. | 100 | Keystone Broadcasting Corp. |
| | WKJC | Lancaster, Pa. | 100 | Lancaster Broadcasting Service. |
| | WLVA | Lynchburg, Va. | 100 | Lynchburg Broadcasting Corp. |
| | WMPC | Lapeer, Mich. | 100 | 1st Methodist Protestant Church. |
| | WNBO | Washington, Pa. | 100 | J. B. Spriggs. |
| | WRBL | Columbus, Ga. | 100 | WRBL Radio Station, Inc. |
| | WVAE | Hammond, Ind. | 100 | Hammond Calumet Broadcasting Corp. |
| | YV3RC | Caracas, Venez. | 100 | Degwitz & Siblesz |
| | 10AK | Stratford, Ont. | 15 | M. I. Higgins. |
| | 10BP | Wingham, Ont. | 25 | W. T. Cruickshank. |
| | 10BQ | Brantford, Ont. | 15 | |
| | 10BU | Canora, Sask. | 50 | Canora Radio Assoc. |

1210 Kilocycles 247.8 Meters

| | | | | |
|--|------|----------------------|-----|----------------------------------|
| | CHNC | New Carlisle, Que. | 100 | Gaspesian Broadcasting Co. |
| | CKBI | Prince Albert, Sask. | 100 | Prince Albert Radio Club. |
| | CKCH | Hull, Que. | 100 | Radio Broadcasting of Hull, Ltd. |
| | CKMC | Cobalt, Ont. | 50 | R. L. MacAdam. |
| | CMJI | Ciego de Avila | 150 | Gilberto Gessa Lopez. |
| | KASA | Elk City, Okla. | 100 | E. M. Woody. |
| | KDLR | Devils Lake, N. D. | 100 | KDLR, Inc. |
| | KFJI | Klamath Falls, Ore. | 100 | KFJI Broadcasters, Inc. |
| | KFOR | Lincoln, Neb. | 100 | Howard Shuman. |
| | KFPW | Fort Smith, Ark. | 100 | Southwestern Hotel Co. |
| | KFVS | Cape Girardeau, Mo. | 100 | Oscar C. Hirsch. |
| | KFXM | San Bernardino, Cal. | 100 | Lee Bros. Broadcasting Co. |
| | KGy | Olympia, Wash. | 100 | KGy, Inc. |
| | KIEM | Eureka, Cal. | 100 | H. H. Hanseth. |
| | KPPC | Pasadena, Cal. | 100 | Pasadena Presbyt. Church. |
| | KWEA | Shreveport, La. | 100 | International Broadcasting Corp. |
| | KWTV | Hilo, T. H. | 100 | Hilo Broadcasting Co., Ltd. |
| | KWTN | Watertown, S. D. | 100 | Greater Kampeska Radio Corp. |
| | WALR | Zanesville, Ohio | 100 | WALR Broadcasting Corp. |
| | WBAX | Wilkes-Barre, Pa. | 100 | John H. Stenger, Jr. |
| | WBBL | Richmond, Va. | 100 | Grace Covenant Presby. Church. |
| | WBRB | Red Bank, N. J. | 100 | Monmouth Broadcasting Co., Inc. |
| | WCBS | Springfield, Ill. | 100 | WCBS, Inc. |
| | WCOL | Columbus, Ohio | 100 | WCOL, Inc. |
| | WCRW | Chicago, Ill. | 100 | Clinton R. White. |
| | WEBG | Harrisburg, Ill. | 100 | Harrisburg Broadcasting Co. |
| | WEDC | Chicago, Ill. | 100 | Emil Denmark. |
| | WFAS | White Plains, N. Y. | 100 | Westchester Broadcasting Corp. |
| | WGBB | Freeport, N. Y. | 100 | H. H. Carman. |
| | WGCM | Gulfport, Miss. | 100 | Great Southern Land Co. |
| | WGNV | Chester, N. Y. | 100 | Peter Goelet. |
| | WHBF | Rock Island, Ill. | 100 | Rock Island Broadcasting Co. |
| | WHBU | Anderson, Ind. | 100 | Anderson Broadcasting Corp. |
| | WIBU | Poynette, Wisc. | 100 | Wm. C. Forrest. |

HEARD VERIFIED

| | | | |
|--|--|------|--------------------|
| | | WJBY | Gadsden, Ala. |
| | | WJEJ | Hagerstown, Md. |
| | | WJIM | Lansing, Mich. |
| | | WJW | Akron, Ohio |
| | | WKOK | Sunbury, Pa. |
| | | WMBG | Richmond, Va. |
| | | WMFG | Hibbing, Minn. |
| | | WOCL | Jamestown, N. Y. |
| | | WOMT | Manitowoc, Wisc. |
| | | WPAX | Thomasville, Ga. |
| | | WSBC | Chicago, Ill. |
| | | WSIX | Springfield, Tenn. |
| | | WSOC | Charlotte, N. C. |
| | | WTAX | Springfield, Ill. |
| | | XEC | Toluca, D. F. |
| | | XEE | Durango, Dgo. |
| | | XEFJ | Monterrey, N. L. |
| | | XEFV | Juarez, Chih. |
| | | XEMZ | Tijuana, B. C. |
| | | XETH | Puebla, Pue. |

| | |
|-----|-----------------------------------|
| 100 | Gadsden Broadcasting Co. |
| 100 | Hagerstown Broadcasting Co., Inc. |
| 100 | Capitol City Broadcasting Co. |
| 100 | WJW, Inc. |
| 100 | Sunbury Broadcasting Co. |
| 100 | Havens & Martin, Inc. |
| 100 | Head of Lakes Broadcasting Co. |
| 100 | A. E. Newton. |
| 100 | Francis M. Kadow. |
| 100 | H. Wimpy. |
| 100 | Gene T. Dyer. |
| 100 | 638 Tire & Vulcanizing Co. |
| 100 | WSOC, Inc. |
| 100 | WTAX, Inc. |
| 50 | |
| 50 | |
| 100 | R. Junco de la Vega |
| 100 | J. Onfre Meza. |
| 30 | Adolfo Labsatida, Jr. |
| 100 | Ramon Huertag. |

1220 Kilocycles 245.8 Meters

| | | | |
|--|--|------|-----------------|
| | | CMHK | Cruces, Cuba |
| | | KTKU | Lawrence, Kans. |
| | | KTW | Seattle, Wash. |
| | | KWSC | Pullman, Wash. |
| | | WCAD | Canton, N. Y. |
| | | WCAE | Pittsburgh, Pa. |
| | | WDAE | Tampa, Fla. |
| | | WREN | Lawrence, Kans. |
| | | ITTR | Trieste, Italy |

| | |
|-------|-------------------------------|
| 50 | Virgilio Villaeuva Fernandez. |
| 1000 | University of Kansas. |
| 1000 | First Presbyterian Church. |
| 1000 | State College of Wash. |
| 500 | St. Lawrence University. |
| 1000 | WCAE, Inc. |
| 1000 | Tampa Times Co. |
| 1000 | Jenny Wren Co. |
| 10000 | E. I. A. R. |

1230 Kilocycles 243.8 Meters

| | | | |
|--|--|------|---------------------|
| | | CJOC | Lethbridge, Alta. |
| | | CMCA | Havana, Cuba |
| | | KGBX | Springfield, Mo. |
| | | KGBM | Albuquerque, N. M. |
| | | KYA | San Francisco, Cal. |
| | | LS8 | Buenos Aires, Arg. |
| | | WFBM | Indianapolis, Ind. |
| | | WNAC | Boston, Mass. |

| | |
|-------|------------------------------------|
| 100 | H. R. Carson, Ltd. |
| 150 | J. M. Gonzales. |
| 500 | KGBX, Inc. |
| 250 | New Mex. Broadcasting Co. |
| 1000 | Pacific Broadcasting Corp. |
| 20000 | Confed. Esperitista Arg. |
| 1000 | Indianapolis Pow. & Lt. Co. |
| 1000 | Shepard Broadcasting Service, Inc. |

1240 Kilocycles 241.8 Meters

| | | | |
|--|--|------|--------------------|
| | | CJCB | Sydney, N. S. |
| | | CMHB | San Spiritus, Cuba |
| | | KGCU | Mandan, N. D. |
| | | KLPM | Minot, N. D. |
| | | KTAT | Fort Worth, Texas |
| | | KTFI | Twin Falls, Idaho |
| | | WKAQ | San Juan, P. R. |
| | | WXYZ | Detroit, Mich. |
| | | XEAI | Mexico, D. F. |

| | |
|------|-----------------------------------|
| 1000 | N. Nathanson. |
| 30 | |
| 250 | Mandan Radio Assn. |
| 250 | John B. Cooley. |
| 1000 | Southwest Broadcasting Co. |
| 1000 | Radio Broadcasting Corp. |
| 1000 | Radio Corp. of P. R. |
| 1000 | Kunsky-Trendle Broadcasting Corp. |
| 100 | Carlos Gonzales Caballero. |

1250 Kilocycles 239.9 Meters

| | | | |
|--|--|------|--------------------|
| | | KFOX | Long Beach, Cal. |
| | | WCAL | Northfield, Minn. |
| | | WDSU | New Orleans, La. |
| | | WHBI | Newark, N. J. |
| | | WLB | Minneapolis, Minn. |
| | | WNEW | Newark, N. J. |
| | | WTCN | Minneapolis, Minn. |

| | |
|------|------------------------------|
| 1000 | Nicholas & Warinner, Inc. |
| 1000 | St. Olaf College. |
| 1000 | Jos. H. Uhalt. |
| 1000 | Hoyt Bros., Inc. |
| 1000 | Univ. of Minnesota. |
| 1000 | WODAAM Corp. |
| 1000 | Minnesota Broadcasting Corp. |

1260 Kilocycles 238.0 Meters

| | | | |
|--|--|------|----------------------|
| | | CFRN | Edmonton, Alta. |
| | | KOIL | Council Bluffs, Iowa |
| | | KPAC | Port Arthur, Tex. |
| | | KRGV | Weslaco, Texas |
| | | KUOA | Fayetteville, Ark. |
| | | KVOA | Tucson, Ariz. |
| | | WLBW | Eric, Pa. |
| | | WNBX | Springfield, Vt. |
| | | WTOC | Savannah, Ga. |

| | |
|------|-------------------------------------|
| 100 | G. R. A. Rice. |
| 1000 | Mona Motor Oil Co. |
| 500 | Port Arthur College. |
| 500 | KRGV, Inc. |
| 1000 | KUOA, Inc. |
| 500 | Arizona Broadcasting Co. |
| 1000 | The Miami Valley Broadcasting Corp. |
| 1000 | WNBX Broadcasting Corp. |
| 500 | Savannah Broadcasting Co., Inc. |

1270 Kilocycles 236.1 Meters

| | | | |
|--|--|------|------------------------|
| | | HIX | Santo Domingo, D. R. |
| | | KGCA | Decorah, Iowa |
| | | KOL | Seattle, Wash. |
| | | KVOR | Colorado Springs, Col. |

| | |
|------|---|
| 1000 | Dominican Republic, J. R. Saladin, Dir. |
| 100 | Chas. W. Greenley. |
| 1000 | Seattle Broadcasting Co. |
| 1000 | S. H. Patterson. |

HEARD VERIFIED

| | | | |
|--|--|------|---------------------|
| | | KWLC | Decorah, Iowa |
| | | LS9 | Buenos Aires, Arg. |
| | | WASH | Grand Rapids, Mich. |
| | | WFBR | Baltimore, Md. |
| | | WJDX | Jackson, Miss. |
| | | WOOD | Grand Rapids, Mich. |
| | | XFB | Jalapa, Ver. |

| | |
|------|-----------------------------------|
| 100 | Luther College. |
| 5000 | Tagliaferro, Raffo y Cia. |
| 500 | Kunsky-Trendle Broadcasting Corp. |
| 500 | Baltimore Radio Show, Inc. |
| 1000 | Lamar Life Ins. Co. |
| 500 | Kunsky-Trendle Broadcasting Corp. |
| 1000 | Gobierno Estado de Veracruz. |

1280 Kilocycles 234.2 Meters

| | | | |
|--|--|------|--------------------|
| | | CMCO | Havana, Cuba |
| | | KFBB | Great Falls, Mont. |
| | | LU7 | Bahia Blanca, Arg. |
| | | WCAM | Camden, N. J. |
| | | WCAP | Asbury Park, N. J. |
| | | WDOD | Chattanooga, Tenn. |
| | | WIBA | Madison, Wisc. |
| | | WORC | Worcester, Mass. |
| | | WRR | Dallas, Texas |
| | | WTNJ | Trenton, N. J. |
| | | XEG | Ensenada, B. C. |

| | |
|------|-----------------------------------|
| 150 | Assn. Dctes Del Comercio. |
| 1000 | Buttre Broadcasting Co. |
| 5000 | |
| 500 | City of Camden. |
| 500 | Radio Industries Broadcasting Co. |
| 1000 | WDOD Broadcasting Corp. |
| 500 | Badger Broadcasting Co., Inc. |
| 500 | A. F. Kleindienst. |
| 500 | City of Dallas. |
| 500 | WOAX, Inc. |
| 250 | |

1290 Kilocycles 232.4 Meters

| | | | |
|--|--|------|----------------------|
| | | KDYL | Salt Lake City, Utah |
| | | KLCN | Blytheville, Ark. |
| | | KTRH | Houston, Texas |
| | | WEBC | Superior, Wisc. |
| | | WJAS | Pittsburgh, Pa. |
| | | WNBZ | Saranac Lake, N. Y. |
| | | WNEL | San Juan, P. R. |

| | |
|------|----------------------------------|
| 1000 | Intermountain Broadcasting Corp. |
| 100 | C. L. Lintzenich. |
| 500 | KTRH Broadcasting Co. |
| 1000 | Head of Lakes Broadcasting Co. |
| 1000 | Pitts. Radio Supply House. |
| 50 | Smith & Mace. |
| 500 | Juan Piza. |

1300 Kilocycles 230.6 Meters

| | | | |
|--|--|------|-------------------|
| | | CMKJ | Guantanamo, Cuba |
| | | KALE | Portland, Ore. |
| | | KFAC | Los Angeles, Cal. |
| | | KFH | Wichita, Kans. |
| | | KFJR | Portland, Ore. |
| | | VOAC | St. John's, Nfd. |
| | | WBBR | Brooklyn, N. Y. |
| | | WEVD | New York, N. Y. |
| | | WFAB | New York, N. Y. |
| | | WEBC | Greenville, S. C. |
| | | WHAZ | Troy, N. Y. |
| | | WIOD | Miami, Fla. |

| | |
|------|------------------------------------|
| 20 | Luis Morlote. |
| 500 | KALE, Inc. |
| 1000 | Los Angeles Broadcasting Co., Inc. |
| 1000 | Radio Station KFJ Co. |
| 500 | Ashley C. Dixon. |
| 40 | |
| 1000 | Peoples Pulpit Assn. |
| 1000 | Jewish Daily Forward. |
| 1000 | 5th Ave. Broadcasting Corp. |
| 1000 | Greenville News-Piedmont Co. |
| 500 | Rensselaer Poly. Inst. |
| 1000 | Isle of Dreams Broadcasting Corp. |

1310 Kilocycles 228.9 Meters

| | | | |
|--|--|------|-------------------------|
| | | CHCK | Charlottetown, P. E. I. |
| | | CJKL | Kirkland Lake, Ont. |
| | | CJLS | Yarmouth, N. S. |
| | | KCCV | Quebec, Que. |
| | | KCRJ | Jerome, Ariz. |
| | | KFBK | Sacramento, Cal. |
| | | KFPL | Dublin, Texas |
| | | KFFM | Greenville, Texas |
| | | KFXR | Oklahoma City, Okla. |
| | | KFYO | Lubbock, Texas |
| | | KGCX | Wolf Point, Mont. |
| | | KGEZ | Kalispell, Mont. |
| | | KGFV | Kearney, Neb. |
| | | KIT | Yakima, Wash. |
| | | KIUJ | Santa Fe, N. Mex. |
| | | KMED | Medford, Ore. |
| | | KRMD | Shreveport, La. |
| | | KTSM | El Paso, Texas |
| | | KXRO | Aberdeen, Wash. |
| | | WAML | Laurel, Miss. |
| | | WBEO | Marquette, Mich. |
| | | WBOW | Terre Haute, Ind. |
| | | WBRE | Wilkes-Barre, Pa. |
| | | WCLS | Joliet, Ill. |
| | | WDAH | El Paso, Texas |
| | | WEBR | Buffalo, N. Y. |
| | | WEXL | Royal Oak, Mich. |
| | | WFBG | Altoona, Pa. |
| | | WFDF | Flint, Mich. |
| | | WGH | Newport News, Va. |
| | | WHAT | Philadelphia, Pa. |
| | | WJAC | Johnstown, Pa. |
| | | WLBC | Muncie, Ind. |
| | | WLNH | Laconia, N. H. |
| | | WMBO | Auburn, N. Y. |
| | | WMFF | Plattsburg, N. Y. |

| | |
|-----|--------------------------------------|
| 50 | W. E. Burke & J. A. Gesner. |
| 100 | Northern Broadcasting Co., Ltd. |
| 100 | Laurie L. Smith |
| 50 | Vandry, Inc. |
| 100 | Chas. C. Robinson. |
| 100 | Jas. McCatchy Pub. Co. |
| 100 | C. C. Baxter. |
| 15 | New Furniture Co. |
| 100 | Exchange Ave. Baptist Church. |
| 100 | Kirksey Bros. |
| 100 | E. E. Krebsbach. |
| 100 | Donald C. Treloar. |
| 100 | Cent. Neb. Broadcasting Corp. |
| 100 | Valley Broadcasters, Inc. |
| 100 | J. H. Speck. |
| 100 | Mrs. W. J. Virgin. |
| 100 | Radio Station KRMD, Inc. |
| 100 | Tri-State Broadcasting Co., Inc. |
| 100 | KXRO, Inc. |
| 100 | Southland Radio Corp. |
| 100 | Lake Superior Broadcasting Co., Inc. |
| 100 | Banks of Wabash, Inc. |
| 100 | Louis G. Baltimore. |
| 100 | WCLS, Inc. |
| 100 | Tri-State Broadcasting Co., Inc. |
| 500 | Howell Broadcasting Co., Inc. |
| 50 | Royal Oak Broadcasting Co. |
| 100 | Gable Broadcasting Co. |
| 100 | Flint Broadcasting Co. |
| 100 | Hampton Rds. Broadcasting Corp. |
| 100 | Curtis-Martin Newspapers, Inc. |
| 100 | WJAC, Inc. |
| 50 | D. A. Burton. |
| 100 | Northern Broadcasting Co., Inc. |
| 100 | WMBO, Inc. |
| 100 | Plattsburg Broadcasting Corp. |

HEARD VERIFIED

| | | | |
|--|--|------|----------------------|
| | | WNBH | New Bedford, Mass. |
| | | WOL | Washington, D. C. |
| | | WRAW | Reading, Pa. |
| | | WROL | Knoxville, Tenn. |
| | | WSAJ | Grove City, Pa. |
| | | WSGN | Birmingham, Ala. |
| | | WSJS | Winston-Salem, N. C. |
| | | WTEL | Philadelphia, Pa. |
| | | WTJS | Jackson, Tenn. |
| | | WTRC | Elkhart, Ind. |
| | | XECW | Mexico City, D. F. |
| | | XEFC | Merida, Yuc. |
| | | XEFW | Tampico, Tamps. |
| | | XETB | Torreón, Coah. |
| | | XEX | Monterrey, N. L. |
| | | XFA | Aguascalientes, Ags. |

| | |
|-----|-------------------------------|
| 100 | E. Anthony & Sons, Inc. |
| 100 | American Broadcasting Co. |
| 100 | Reading Broadcasting Co. |
| 100 | Stuart Broadcasting Corp. |
| 100 | Grove City College. |
| 100 | R. B. Broyles. |
| 100 | Winston-Salem Journal. |
| 100 | Foultree Radio Eng. Co., Inc. |
| 100 | Sun Publishing Co. |
| 50 | Truth Radio Corp. |
| 10 | María Elena Bravo de Cardero. |
| 100 | J. Molina. |
| 70 | J. Expedito Martinez. |
| 125 | Jose A. Berumen. |
| 125 | L. F. Petit Jean. |
| 5 | |

1320 Kilocycles 227.1 Meters

| | | | |
|--|--|------|--------------------|
| | | CMBD | Havana, Cuba |
| | | COX | Havana, Cuba |
| | | KGHB | Pueblo, Colo. |
| | | KGMB | Honolulu, T. H. |
| | | KID | Idaho Falls, Idaho |
| | | KSO | Des Moines, Iowa |
| | | WADC | Akron, Ohio |
| | | WORK | York, Pa. |
| | | WSMB | New Orleans, La. |

| | |
|------|----------------------------|
| 150 | Luis Perez Garcia |
| 200 | New Station. |
| 500 | C. P. Ritchie. |
| 250 | Honolulu Broadcasting Co. |
| 250 | KID Broadcasting Co., Inc. |
| 500 | Des Moines Register. |
| 1000 | Allen T. Simmons. |
| 1000 | York Broadcasting Co. |
| 500 | WSMB, Inc. |

1330 Kilocycles 225.4 Meters

| | | | |
|--|--|------|-------------------|
| | | KGB | San Diego, Cal. |
| | | KMO | Tacoma, Wash. |
| | | KSCJ | Sioux City, Iowa |
| | | WDRG | Hartford, Conn. |
| | | WSAI | Cincinnati, Ohio |
| | | WTAQ | Eau Claire, Wisc. |

| | |
|------|---------------------|
| 1000 | Don Lee Inc. |
| 250 | KMO, Inc. |
| 1000 | Perkins Bros. Co. |
| 1000 | WDRG, Inc. |
| 1000 | Crosley Radio Corp. |
| 1000 | Gillette Rubber Co. |

1340 Kilocycles 223.7 Meters

| | | | |
|--|--|------|---------------------|
| | | KFPY | Spokane, Wash. |
| | | KGDY | Huron, S. D. |
| | | KGNO | Dodge City, Kans. |
| | | WCOA | Pensacola, Fla. |
| | | WFEA | Manchester, N. H. |
| | | WSPD | Toledo, Ohio |
| | | XFD | Orizaba, Ver. |
| | | | Montpellier, France |

| | |
|-------|--------------------------------|
| 1000 | Symons Broadcasting Corp. |
| 250 | Voice of So. Dakota, Inc. |
| 250 | KGNO Broadcasting Station. |
| 500 | Pensacola Broadcasting Co. |
| 500 | New Hampshire Broadcasting Co. |
| 1000 | Toledo Broadcasting Co. |
| 250 | Gobierno Estado de Veracruz. |
| 30000 | PTT |

1350 Kilocycles 222.1 Meters

| | | | |
|--|--|------|------------------|
| | | KIDO | Boise, Idaho |
| | | KWK | St. Louis, Mo. |
| | | WAWZ | Zarephath, N. J. |
| | | WBNX | New York, N. Y. |

| | |
|------|------------------------------|
| 1000 | C. G. Phillips & F. L. Hill. |
| 1000 | Thomas Patrick, Inc. |
| 250 | Pillar of Fire. |
| 250 | Standard Cahill Co. |

1360 Kilocycles 220.4 Meters

| | | | |
|--|--|------|-------------------|
| | | CMJP | Moron, Cuba |
| | | CMKF | Holquin, Cuba |
| | | KGER | Long Beach, Cal. |
| | | KGIR | Butte, Mont. |
| | | WCSC | Charleston, S. C. |
| | | WEFL | Syracuse, N. Y. |
| | | WGES | Chicago, Ill. |
| | | WQBC | Vicksburg, Miss. |
| | | WSBT | South Bend, Ind. |

| | |
|------|---------------------------------------|
| 75 | Cesar Canail. |
| 30 | Libertad Esq. Arias |
| 1000 | Consolidated Broadcasting Co. |
| 1000 | KGIR, Inc. |
| 500 | So. Car. Broadcasting Co., Inc. |
| 1000 | Onondaga Radio Broadcasting Corp. |
| 500 | Oak Leaves Broadcasting Station, Inc. |
| 500 | Delta Broadcasting Co. |
| 500 | S. B. Tribune. |

1370 Kilocycles 218.8 Meters

| | | | |
|--|--|------|----------------------|
| | | CKCW | Moncton, N. B. |
| | | CMCU | Havana, Cuba |
| | | CMGE | Cardenas, Cuba |
| | | KCRC | Enid, Okla. |
| | | KERN | Bakersfield, Cal. |
| | | KFGQ | Boone, Iowa |
| | | KFJM | Grand Forks, N. D. |
| | | KFJZ | Fort Worth, Texas |
| | | KFRO | Longview, Texas |
| | | KGAR | Tucson, Ariz. |
| | | KGFG | Oklahoma City, Okla. |

| | |
|-----|----------------------------------|
| 100 | Moncton Broadcasting Co., Ltd. |
| 150 | Jorge Garcia Serra. |
| 30 | Genaro Sebatier. |
| 100 | Enid Radiophone Co. |
| 100 | Bee Bakersfield Broadcasting Co. |
| 100 | Boone Biblical College. |
| 100 | Univ. of No. Dakota. |
| 100 | Ft. Worth Broadcasters, Inc. |
| 100 | Voice of Longview. |
| 100 | Tucson Motor Service Co. |
| 100 | Oklahoma Broadcasting Co. |

HEARD VERIFIED

| | | | |
|--|--|------|-----------------------|
| | | KGFL | Roswell, N. M. |
| | | KGKL | San Angelo, Texas |
| | | KICA | Clovis, N. M. |
| | | KLUF | Galveston, Texas |
| | | KMAC | San Antonio, Texas |
| | | KONO | San Antonio, Texas |
| | | KKE | Berkeley, Cal. |
| | | KRKO | Everett, Wash. |
| | | KSLM | Salem, Ore. |
| | | KUJ | Walla Walla, Wash. |
| | | KVL | Seattle, Wash. |
| | | KWKC | Kansas City, Mo. |
| | | KWYO | Sheridan, Wyo. |
| | | WABY | Albany, N. Y. |
| | | WAGF | Dothan, Ala. |
| | | WBTM | Danville, Va. |
| | | WCBM | Baltimore, Md. |
| | | WDAS | Philadelphia, Pa. |
| | | WGL | Fort Wayne, Ind. |
| | | WHBD | Mt. Orab, Ohio |
| | | WHBQ | Memphis, Tenn. |
| | | WHDF | Calumet, Mich. |
| | | WIBM | Jackson, Mich. |
| | | WJTL | Atlanta, Ga. |
| | | WLLH | Lowell, Mass. |
| | | WMBR | Jacksonville, Fla. |
| | | WMFD | Wilmington, N. C. |
| | | WOC | Davenport, Ia. |
| | | WPEB | Hattiesburg, Miss. |
| | | WQDM | St. Albans, Vt. |
| | | WRAK | Williamsport, Pa. |
| | | WRDO | Augusta, Me. |
| | | WRJN | Racine, Wisc. |
| | | WSVS | Buffalo, N. Y. |
| | | XEFE | Nuevo Laredo, Tamps. |
| | | XEFZ | Mexico City, D. F. |
| | | XEI | Morelia, Meh. |
| | | XEZZ | San Luis Potosi, Slp. |

| | |
|-----|----------------------------------|
| 100 | KGFL, Inc. |
| 100 | KGKL, Inc. |
| 100 | Southwest Broadcasting Co. |
| 100 | George R. Clough. |
| 100 | W. W. McAllister. |
| 100 | Mission Broadcasting Co. |
| 100 | 1st Congregational Church. |
| 50 | Lee E. Mudgett. |
| 100 | Oregon Radio, Inc. |
| 100 | KUJ, Inc. |
| 100 | KVL, Inc. |
| 100 | Wilson Duncan Broadcasting Co. |
| 100 | Big Horn Broadcasting Co. |
| 100 | WOKO, Inc. |
| 100 | Dothan Broadcasting Corp. |
| 100 | Piedmont Broadcasting Corp. |
| 100 | Baltimore Broadcasting Corp. |
| 100 | WDAS Broadcasting Co., Inc. |
| 100 | F. C. Zieg. |
| 100 | Veebee Corp. |
| 100 | Broadcasting Station WHBQ, Inc. |
| 100 | Upper Mich. Broadcasting Co. |
| 100 | WIBM, Inc. |
| 100 | Oglethorpe University. |
| 100 | Albert S. Moffat. |
| 100 | F. J. Reynolds. |
| 100 | Richard A. Dunlea. |
| 100 | Palmer School of Chiropractic. |
| 100 | Otis Perry Cure. |
| 100 | A. J. St. Antoine & E. J. Regan. |
| 100 | WRAK, Inc. |
| 100 | WRDO, Inc. |
| 100 | Racine Broadcasting Corp. |
| 50 | Seneca Voca. High School. |
| 100 | R. T. Carranza. |
| 100 | Manuel Zetina. |
| 125 | Carlos Gutierrez. |
| 100 | Emilio Delgado. |

1380 Kilocycles 217.3 Meters

| | | | |
|--|--|------|--------------------|
| | | CMJC | Camaguey, Cuba |
| | | KOH | Reno, Nev. |
| | | KQV | Pittsburgh, Pa. |
| | | WALA | Mobile, Ala. |
| | | WKBH | La Crosse, Wisc. |
| | | WMFE | New Britain, Conn. |
| | | WSMK | Dayton, Ohio |

| | |
|------|-------------------------|
| 150 | Feliciano Isaac. |
| 500 | The Bee, Inc. |
| 500 | KQV Broadcasting Co. |
| 500 | Pape Broadcasting Corp. |
| 1000 | WKBH, Inc. |
| 250 | William J. Sanders. |
| 200 | WSMK, Inc. |

1390 Kilocycles 215.7 Meters

| | | | |
|--|--|------|---------------------------|
| | | CJRC | Winnipeg, Man. |
| | | HHH | S. Pedro de Macoris, D.R. |
| | | KLRA | Little Rock, Ark. |
| | | KOY | Phoenix, Ariz. |
| | | WHK | Cleveland, Ohio |

| | |
|------|-------------------------------|
| 100 | Jas. Richardson & Sons, Ltd. |
| 15 | Domingo Dominguez. |
| 1000 | Arkansas Broadcasting Co. |
| 500 | Nielson Radio, Sptg. Gds. Co. |
| 1000 | Radio Air Service Corp. |

1400 Kilocycles 214.2 Meters

| | | | |
|--|--|------|----------------------|
| | | CMCR | Havana, Cuba |
| | | KLO | Ogden, Utah |
| | | KTUL | Tulsa, Okla. |
| | | TGX | Guatemala City, Gua. |
| | | WARD | Brooklyn, N. Y. |
| | | WBBC | Brooklyn, N. Y. |
| | | WKBF | Indianapolis, Ind. |
| | | WLTH | Brooklyn, N. Y. |
| | | WVFW | Brooklyn, N. Y. |

| | |
|-----|---------------------------------|
| 150 | Antonio Ginard. |
| 500 | Interstate Broadcasting Co. |
| 250 | Tulsa Broadcasting Co., Inc. |
| 150 | |
| 500 | U. S. Broadcasting Corp. |
| 500 | Brooklyn Broadcasting Corp. |
| 500 | Indianapolis Broadcasting, Inc. |
| 500 | Voice of Brooklyn, N. Y. |
| 500 | Paramount Broadcasting Corp. |

1410 Kilocycles 212.6 Meters

| | | | |
|--|--|------|-------------------|
| | | CKGB | Timmins, Ont. |
| | | CKFC | Vancouver, B. C. |
| | | CKNC | Toronto, Ont. |
| | | CKMO | Vancouver, B. C. |
| | | KGRS | Amarillo, Texas |
| | | WAAB | Boston, Mass. |
| | | WBCM | Bay City, Mich. |
| | | WDAG | Amarillo, Texas |
| | | WHBL | Sheboygan, Wisc. |
| | | WHIS | Bluefield, W. Va. |
| | | WRBX | Roanoke, Va. |
| | | WROK | Rockford, Ill. |
| | | WSFA | Montgomery, Ala. |

| | |
|------|-----------------------------------|
| 100 | Northern Broadcasting Co., Ltd. |
| 50 | United Church of Canada. |
| 100 | Canadian National Carbon, Ltd. |
| 100 | Sprott-Shaw Radio Co. |
| 1000 | E. B. Gish. |
| 500 | Bay State Broadcasting Corp. |
| 500 | James E. Davidson. |
| 1000 | Natl. Radio & Broadcasting Corp. |
| 500 | Press Publishing Co. |
| 250 | Daily Telegraph Printing Co. |
| 250 | Richmond Development Corp. |
| 500 | Rockford Broadcasters, Ltd. |
| 500 | Montgomery Broadcasting Co., Inc. |

HEARD VERIFIED

1420 Kilocycles 211.1 Meters

| | | | | |
|--|------|----------------------|-----|-------------------------------------|
| | CMBX | Havana, Cuba | 150 | Alberto Alvarez. |
| | KABC | San Antonio, Texas | 100 | Alamo Broadcasting Co., Inc. |
| | KABR | Aberdeen, Wash. | 100 | Aberdeen Broadcasting Co. |
| | KBPS | Portland, Ore. | 100 | Benson Polytech. School. |
| | KCMC | Texarkana, Ark. | 100 | M. P. Mims. |
| | KFTZ | Fond du Lac, Wis. | 100 | Reporter Printing Co. |
| | KGFF | Shawnee, Okla. | 100 | KGFF Broadcasting Co., Inc. |
| | KGGC | San Francisco, Cal. | 100 | Golden Gate Broadcasting Co. |
| | KGIW | Alamosa, Colo. | 100 | Leonard E. Wilson. |
| | KGIX | Las Vegas, Nev. | 100 | J. M. Heaton. |
| | KIDW | Lamar, Colo. | 100 | Lamar Broadcasting Co. |
| | KORE | Eugene, Ore. | 100 | C. G. Phillips & F. L. Hill. |
| | KUMA | Yuma, Ariz. | 100 | Dr. A. H. Schermann. |
| | KXL | Portland, Ore. | 100 | KXL Broadcasters. |
| | | Daytona Beach, Fla. | 100 | W. W. Esch. |
| | WACO | Waco, Texas | 100 | Southwest Broadcasting Co. |
| | WAGM | Presque Isle, Me. | 100 | Aroostook Broadcasting Corp. |
| | WAZL | Hazelton, Pa. | 100 | Hazelton Broadcasting Service, Inc. |
| | WEED | Rocky Point, N. C. | 100 | Wm. Avera Wynne. |
| | WEUC | Charlottesville, Va. | 100 | Community Broadcasting Corp. |
| | WEHS | Cicero, Ill. | 100 | WEHS, Inc. |
| | WELL | Battle Creek, Mich. | 50 | Enquirer News Co. |
| | WGPC | Albany, Ga. | 100 | Americus Broadcasting Corp. |
| | WHDL | Olean, N. Y. | 100 | Tupper Lake Broadcasting Co. |
| | WHFC | Cicero, Ill. | 100 | WHFC, Inc. |
| | WILM | Wilmington, Del. | 100 | Delaware Broadcasting Co., Inc. |
| | WJBO | Baton Rouge, La. | 100 | Baton Rouge Broadcasting Co., Inc. |
| | WJMS | Ironwood, Mich. | 100 | WJMS, Inc. |
| | WKBI | Cicero, Ill. | 100 | WKBI, Inc. |
| | WLAP | Lexington, Ky. | 100 | Amer. Broadcasting Corp. of Ky. |
| | WLBF | Kansas City, Kans. | 100 | WLBF Broadcasting Co. |
| | WLEU | Erie, Pa. | 100 | Leo J. Omellan. |
| | WMAS | Springfield, Mass. | 100 | WMAS, Inc. |
| | WMBC | Detroit, Mich. | 100 | Michigan Broadcasting Co. |
| | WMBH | Joplin, Mo. | 100 | W. M. Robertson. |
| | WNRA | Muscle Shoals, Ala. | 100 | Muscle Shoals Broadcasting Corp. |
| | WPAD | Paducah, Ky. | 100 | Paducah Broadcasting Co., Inc. |
| | XETB | Monterrey, N. L. | 100 | Jesus Quantanilla. |

1430 Kilocycles 209.7 Meters

| | | | | |
|--|------|----------------------|------|---------------------------------|
| | CHGS | Summerside, P. E. I. | 50 | R. T. Holman, Ltd. |
| | KECA | Los Angeles, Cal. | 1000 | Earle C. Anthony, Inc. |
| | KGNE | North Platte, Neb. | 500 | Great Plains Broadcasting Co. |
| | KWCR | Des Moines, Iowa. | 250 | Cedar Rapids Broadcasting Co. |
| | WBNS | Columbus, Ohio | 500 | Internatl. Bible Students Assn. |
| | WHEC | Rochester, N. Y. | 500 | WHEC, Inc. |
| | WHP | Harrisburg, Pa. | 500 | Harrisburg Telegraph. |
| | WNBR | Memphis, Tenn. | 500 | Memphis Broadcasting Co. |
| | WOKO | Albany, N. Y. | 500 | WOKO, Inc. |

1440 Kilocycles 208.2 Meters

| | | | | |
|--|------|-------------------|-----|---------------------------------|
| | KDFN | Casper, Wyo. | 500 | D. L. Hathaway. |
| | KLS | Oakland, Cal. | 250 | Warner Bros. |
| | KXYZ | Houston, Texas | 250 | Harris County Broadcasting Co. |
| | WBIG | Greensboro, N. C. | 500 | No. Car. Broadcasting Co., Inc. |
| | WCBA | Allentown, Pa. | 250 | Lehigh Valley Broadcasting Co. |
| | WMBD | Peoria, Ill. | 500 | Peoria Broadcasting Co. |
| | WSAN | Allentown, Pa. | 250 | WSAN, Inc. |
| | WTAD | Quincy, Ill. | 500 | Illinois Broadcasting Corp. |
| | XEFI | Chihuahua, Chih. | 250 | Peliciano Lopez. |

1450 Kilocycles 206.8 Meters

| | | | | |
|--|------|--------------------|-------|---------------------------------|
| | CFCT | Victoria, B. C. | 75 | Victoria Broadcasting Assn. |
| | COK | Havana, Cuba | 250 | Rafael Valdez. |
| | KTBS | Shreveport, La. | 1000 | Tri-State Broadcasting System. |
| | WGAR | Cleveland, Ohio | 500 | WGAR Broadcasting Co. |
| | WHOM | Jersey, City N. J. | 250 | N. J. Broadcasting Corp. |
| | WSAR | Fall River, Mass. | 500 | Doughty & Welch Elec. Co., Inc. |
| | WTFI | Athens, Ga. | 500 | Liberty Broadcasting Co. |
| | | Fecamp, France | 10000 | "Radio Normandie." |

1460 Kilocycles 205.4 Meters

| | | | | |
|--|------|-----------------------|-------|---------------------------------|
| | KSTP | St. Paul-Mpls., Minn. | 10000 | Natl. Battery Broadcasting Co. |
| | WJSV | Washington, D. C. | 10000 | Old Dominion Broadcasting Corp. |

1470 Kilocycles 204.0 Meters

| | | | | |
|--|------|------------------|------|--------------------------|
| | WLAC | Nashville, Tenn. | 5000 | Life & Casualty Ins. Co. |
|--|------|------------------|------|--------------------------|

1480 Kilocycles 202.6 Meters

| | | | | |
|--|------|----------------------|------|--------------------------|
| | KOMA | Oklahoma City, Okla. | 5000 | Natl. Radio Mfg. Co. |
| | WKBW | Buffalo, N. Y. | 5000 | Buffalo Broadcasting Co. |

HEARD VERIFIED

1490 Kilocycles 201.2 Meters

☐ ☐ WCKY Covington, Ky.

5000 L. B. Wilson, Inc.

1500 Kilocycles 199.9 Meters

☐ ☐ CMCN Havana, Cuba
☐ ☐ KDB Santa Barbara, Cal.
☐ ☐ KGFI Corpus Christi, Texas
☐ ☐ KGFK Moorhead, Minn.
☐ ☐ KGKB Tyler, Texas
☐ ☐ KGKY Scottsbluff, Neb.
☐ ☐ KNOW Austin, Texas
☐ ☐ KOTN Pine Bluff, Ark.
☐ ☐ KPJM Prescott, Ariz.
☐ ☐ KPQ Wenatchee, Wash.
☐ ☐ KREG Santa Ana, Cal.
☐ ☐ KXO El Centro, Cal.
☐ ☐ WCNW Brooklyn, N. Y.
☐ ☐ WDNQ Durham, N. C.
☐ ☐ WGAL Lancaster, Pa.
☐ ☐ WHEF Kosciusko, Miss.
☐ ☐ WJBK Detroit, Mich.
☐ ☐ WKBB East Dubuque, Ill.
☐ ☐ WKBY Richmond, Ind.
☐ ☐ WKBZ Muskegon, Mich.
☐ ☐ WKEU Griffin, Ga.
☐ ☐ WMBQ Brooklyn, N. Y.
☐ ☐ WMEX Chelsea, Mass.
☐ ☐ WNBZ Binghamton, N. Y.
☐ ☐ WOPI Bristol, Tenn.
☐ ☐ WRDW Augusta, Ga.
☐ ☐ WRGA Rome, Ga.
☐ ☐ WSYB Rutland, Vt.
☐ ☐ WWRL Woodside, N. Y.
☐ ☐ WWSW Pittsburgh, Pa.

250 Aurelio Hernandez.
 100 Santa Barbara Broadcasters.
 100 Eagle Broadcasting Co., Inc.
 100 Red River Broadcasting Co., Inc.
 100 East Texas Broadcasting Co.
 100 Hilliard Co., Inc.
 100 Southwest Broadcasting Co.
 100 William F. Chaplin.
 100 Frank Mauthe.
 100 Westcoast Broadcasting Co.
 100 Voice of the Orange Empire.
 100 E. R. Irey & F. M. Bowles.
 100 Arthur Faske.
 100 Durham Radio Corp.
 100 WGAL, Inc.
 100 Attala Broadcasting Corp.
 100 Sanders Bros. Radio Station.
 100 James F. Hopkins, Inc.
 100 Wm. O. Knox.
 100 K. L. Ashbacker & Sons.
 100 Radio Station WKEU.
 100 Paul J. Gollhofer.
 100 Northern Radio Corp.
 100 Howitt-Wood Radio Co., Inc.
 100 Radiophone Broadcasting Sta. WOPI.
 100 Virgil V. Evans Co.
 100 Rome Broadcasting Corp.
 100 Phillip Weiss Music Co.
 100 Long Island Broadcasting Corp.
 100 Walker & Downing Radio Corp.

1510 Kilocycles 198.6 Meters

☐ ☐ CFRK Kingston, Ont.
☐ ☐ CFCR Waterloo, Ont.

100 Queen's University.
 100 W. C. Mitchell & G. Liddle.

1530 Kilocycles 196.0 Meters

☐ ☐ WIXBS Waterbury, Conn.
☐ ☐ W9XBY Kansas City, Mo.

1000 Waterbury Republican.
 1000 First National Television, Inc.

1550 Kilocycles 193.5 Meters

☐ ☐ W2XR Long Island City, N. Y.
☐ ☐ W6XAI Bakersfield, Cal.

1000 John V. L. Hogan.
 1000 Pioneer Mercantile Co.

SUBSCRIPTION BLANK

Newark News Radio Club
 215 Market Street
 Newark, N. J.

Enclosed please find \$..... for which send me postpaid my choice of your offers as checked below:

- | | |
|---|--------|
| <input type="checkbox"/> One trial copy of THE DIALIST | 10c |
| <input type="checkbox"/> Trial subscription, next five issues | 50c |
| <input type="checkbox"/> One year subscription or ten copies | \$1.00 |

Above rates apply to anywhere in the northern hemisphere. Above rates apply to members of The Newark News Radio Club in all sections of the world.

FOREIGN RATES—NON-MEMBERS

- | | |
|---|--------|
| <input type="checkbox"/> One trial copy of THE DIALIST | 20c |
| <input type="checkbox"/> Trial subscription, next five issues | 75c |
| <input type="checkbox"/> One year subscription or ten copies | \$1.25 |

Name

Street and No.

City, State and Country

(Please Print)

BROADCASTING STATIONS

(BY CALL LETTERS)

| CALL | LOCATION | KCY.S. | CALL | LOCATION | KCY.S. |
|------------------------------|----------|--------|----------------------------|----------|--------|
| CFAC—Calgary, Alta. | | 930 | CKY—Winnipeg, Man. | | 960 |
| CFCE—Montreal, Que. | | 600 | CMAF—Havana, Cuba | | 680 |
| CFCH—North Bay, Ont. | | 930 | CMBC—Havana, Cuba | | 1030 |
| CFCN—Calgary, Alta. | | 1030 | CMBD—Havana, Cuba | | 1320 |
| CFCO—Chatham, Ont. | | 600 | CMBG—Havana, Cuba | | 1150 |
| CFCT—Victoria, B. C. | | 1450 | CMBS—Havana, Cuba | | 780 |
| CFCY—Charlottetown, P. E. I. | | 630 | CMBG—Havana, Cuba | | 1150 |
| CFJC—Kamloops, B. C. | | 880 | CMBX—Havana, Cuba | | 1425 |
| CFLC—Prescott, Ont. | | 930 | CMBY—Havana, Cuba | | 635 |
| CFNB—Fredericton, N. B. | | 550 | CMBZ—Havana, Cuba | | 1005 |
| CFPL—London, Ont. | | 730 | CMC—Havana, Cuba | | 835 |
| CFQC—Saskatoon, Sask. | | 1230 | CMCA—Havana, Cuba | | 1230 |
| CFRB—Toronto, Ont. | | 690 | CMCB—Havana, Cuba | | 1060 |
| CFRC—Kingston, Ont. | | 1510 | CMCD—Havana, Cuba | | 955 |
| CFRN—Edmonton, Alta. | | 1260 | CMCF—Havana, Cuba | | 610 |
| CHAB—Moose Jaw, Sask. | | 1200 | CMCG—Havana, Cuba | | 1120 |
| CHCK—Charlottetown, P. E. I. | | 1310 | CMCJ—Havana, Cuba | | 1200 |
| CHGS—Summerside, P. E. I. | | 1435 | CMCM—Havana, Cuba | | 1405 |
| CHLP—Montreal, Que. | | 1120 | CMCN—Havana, Cuba | | 1500 |
| CHML—Hamilton, Ont. | | 1010 | CMCO—Havana, Cuba | | 1280 |
| CHNC—New Carlisle, Que. | | 1210 | CMCQ—Havana, Cuba | | 680 |
| CHNS—Halifax, N. S. | | 930 | CMCR—Havana, Cuba | | 1400 |
| CHRC—Quebec, Que. | | 580 | CMCU—Havana, Cuba | | 1375 |
| CHSJ—St. John, N. B. | | 1120 | CMCW—Havana, Cuba | | 750 |
| CHWC—Regina, Sask. | | 1010 | CMCY—Havana, Cuba | | 1100 |
| CHWK—Chilliwack, B. C. | | 780 | CMCX—Havana, Cuba | | 860 |
| CJAT—Trail, B. C. | | 910 | CMGE—Cardenas, Cuba | | 1375 |
| CJCA—Edmonton, Alta. | | 730 | CMGF—Matanzas, Cuba | | 970 |
| CJCB—Sydney, N. S. | | 1240 | CMGH—Matanzas, Cuba | | 1040 |
| CJCJ—Calgary, Alta. | | 690 | CMGI—Colon, Cuba | | 1090 |
| CJGX—Yorkton, Sask. | | 630 | CMHA—Sagua la Grande, Cuba | | 1103 |
| CJIC—Sault Ste. Marie, Ont. | | 890 | CMHB—San Spiritus, Cuba | | 1245 |
| CJKL—Kirkland Lake, Ont. | | 1310 | CMHD—Caibarien, Cuba | | 950 |
| CJLS—Yarmouth, N. S. | | 1310 | CMHI—Santa Clara, Cuba | | 1037 |
| CJOC—Lethbridge, Alta. | | 1230 | CMHJ—Cienfuegos, Cuba | | 1125 |
| CJOR—Vancouver, B. C. | | 600 | CMHK—Cruces, Cuba | | 1225 |
| CJRC—Winnipeg, Man. | | 1390 | CMHW—Cienfuegos, Cuba | | 910 |
| CJRM—Moose Jaw, Sask. | | 540 | CMJC—Camaguey, Cuba | | 1382 |
| CKAC—Montreal, Que. | | 730 | CMJE—Camaguey, Cuba | | 1170 |
| CKBI—Prince Albert, Sask. | | 1210 | CMJF—Camaguey, Cuba | | 930 |
| CKCD—Vancouver, B. C. | | 1010 | CMJG—Camaguey, Cuba | | 1050 |
| CKCH—Hull, Que. | | 1210 | CMJH—Ciego de Avila, Cuba | | 1150 |
| CKCK—Regina, Sask. | | 1010 | CMJI—Ciego de Avila, Cuba | | 1210 |
| CKCL—Toronto, Ont. | | 580 | CMJK—Camaguey, Cuba | | 790 |
| CKCO—Ottawa, Ont. | | 1010 | CMJL—Camaguey, Cuba | | 960 |
| CKCR—Waterloo, Ont. | | 1510 | CMJO—Ciego de Avila, Cuba | | 1010 |
| CKCV—Quebec, Que. | | 1310 | CMJP—Moron, Cuba | | 1360 |
| CKCW—Moncton, N. B. | | 1370 | CMK—Havana, Cuba | | 730 |
| CKFC—Vancouver, B. C. | | 1410 | CMKC—Santiago, Cuba | | 1034 |
| CKGB—Timmins, Ont. | | 1410 | CMKF—Holguin, Cuba | | 1363 |
| CKIC—Wolfville, N. S. | | 1010 | CMKJ—Guantanamo, Cuba | | 1300 |
| CKLW—Windsor, Ont. | | 1030 | CKM—Manzanillo, Cuba | | 940 |
| CKMC—Cobalt, Ont. | | 1210 | CMQ—Havana, Cuba | | 840 |
| CKMO—Vancouver, B. C. | | 1410 | CMW—Havana, Cuba | | 930 |
| CKNC—Toronto, Ont. | | 1410 | CMX—Havana, Cuba | | 918 |
| CKOC—Hamilton, Ont. | | 1120 | COA—Havana, Cuba | | 1175 |
| CKOV—Kelowna, B. C. | | 630 | COK—Havana, Cuba | | 1450 |
| CKPC—Brantford, Ont. | | 930 | COX—Havana, Cuba | | 1320 |
| CKPR—Fort William, Ont. | | 930 | CRCK—Quebec, Que. | | 1050 |
| CKTB—St. Catharines, Ont. | | 1200 | CRCM—Montreal, Que. | | 910 |
| CKUA—Edmonton, Alta. | | 580 | CRCO—Ottawa, Ont. | | 880 |
| CKWX—Vancouver, B. C. | | 1010 | CRCS—Chicoutimi, Que. | | 950 |
| CKX—Brandon, Man. | | 1120 | CRCT—Toronto, Ont. | | 840 |

| CALL | LOCATION | KCYS. | CALL | LOCATION | KCYS. |
|---------------------------------|----------|-------|----------------------------|----------|-------|
| CRCV—Vancouver, B. C. | | 1100 | KFXD—Nampa, Idaho | | 1200 |
| CX4—Montevideo, Uruguay | | 610 | KFXJ—Grand Junction, Colo. | | 1200 |
| CX5—Montevideo, Uruguay | | 650 | KFXM—San Bernardino, Cal. | | 1210 |
| CX26—Montevideo, Uruguay | | 1050 | KFXR—Oklahoma City, Okla. | | 1310 |
| CX28—Montevideo, Uruguay | | 1090 | KFYO—Lubbock, Texas | | 1310 |
| FQN—St. Pierre, Miq. Is. | | 609 | KFYR—Bismarck, N. D. | | 550 |
| HHK—Port-au-Prince, Haiti | | 920 | KGA—Spokane, Wash. | | 900 |
| HHH—San Pedro de Macoris, D. R. | | 1395 | KGAR—Tucson, Ariz. | | 1370 |
| HIX—Santo Domingo, D. R. | | 1270 | KGB—San Diego, Cal. | | 1330 |
| HJN—Bogata, Colombia | | 680 | KGBU—Ketchikan, Alaska | | 900 |
| KABC—San Antonio, Tex. | | 1420 | KGBX—Springfield, Mo. | | 1230 |
| KABR—Aberdeen, S.D. | | 1420 | KGBZ—York, Neb. | | 930 |
| KADA—Ada, Okla. | | 1200 | KGCA—Decorah, Iowa | | 1270 |
| KALE—Portland, Ore. | | 1300 | KGCU—Mandan, N. D. | | 1240 |
| KARK—Little Rock, Ark. | | 890 | KGCX—Wolf Point, Mont. | | 1310 |
| KASA—Elk City, Okla. | | 1210 | KGDE—Fergus Falls, Minn. | | 1200 |
| KBPS—Portland, Ore. | | 1420 | KGDM—Stockton, Cal. | | 1100 |
| KBTM—Jonesboro, Ark. | | 1200 | KGDY—Huron, S. D. | | 1340 |
| KCMC—Texarkana, Ark. | | 1420 | KGEK—Sterling, Colo. | | 1200 |
| KCRC—Enid, Okla. | | 1370 | KGER—Long Beach, Cal. | | 1360 |
| KCRJ—Jerome, Ariz. | | 1310 | KGEZ—Kalispell, Mont. | | 1310 |
| KDB—Santa Barbara, Cal. | | 1500 | KGFF—Shawnee, Okla. | | 1420 |
| KDFN—Casper, Wyo. | | 1440 | KGFG—Oklahoma City, Okla. | | 1370 |
| KDKA—Pittsburgh, Pa. | | 980 | KGFI—Corpus Christi, Texas | | 1500 |
| KDLR—Devils Lake, N. D. | | 1210 | KGFI—Los Angeles, Cal. | | 1200 |
| KDYL—Salt Lake City, Utah | | 1290 | KGFK—Moorhead, Minn. | | 1500 |
| KECA—Los Angeles, Cal. | | 1430 | KGFL—Roswell, N. Mex. | | 1370 |
| KELW—Burbank, Cal. | | 780 | KGFV—Kearney, Neb. | | 1310 |
| KERN—Bakersfield, Cal. | | 1370 | KGFX—Pierre, S. D. | | 630 |
| KEX—Portland, Ore. | | 1180 | KGGC—San Francisco, Cal. | | 1420 |
| KFAB—Lincoln Neb. | | 770 | KGGF—Coffeyville, Kans. | | 1010 |
| KFAC—Los Angeles, Cal. | | 1300 | KGGM—Albuquerque, N. Mex. | | 1230 |
| KFBB—Great Falls, Mont. | | 1280 | KGHF—Pueblo, Colo. | | 1320 |
| KFBI—Abilene, Kans. | | 1050 | KGHI—Little Rock, Ark. | | 1200 |
| KFBK—Sacramento, Cal. | | 1310 | KGHL—Billings, Mont. | | 780 |
| KFDM—Beaumont, Texas | | 560 | KGIR—Butte, Mont. | | 1360 |
| KFDY—Brookings, S. D. | | 780 | KGIW—Alamosa, Colo. | | 1420 |
| KFEL—Denver, Colo. | | 920 | KGIX—Las Vegas, Nev. | | 1420 |
| KFEQ—St. Joseph, Mo. | | 680 | KGKB—Tyler, Texas | | 1500 |
| KFGQ—Boone, Iowa | | 1370 | KGKL—San Angelo, Texas | | 1370 |
| KFH—Wichita, Kans. | | 1300 | KGKO—Wichita Falls, Texas | | 570 |
| KFI—Los Angeles, Cal. | | 640 | KGKY—Scottsbluff, Neb. | | 1500 |
| KFIO—Spokane, Wash. | | 1120 | KGMB—Honolulu, Hawaii | | 1320 |
| KFIZ—Pond du Lac, Wis. | | 1420 | KGNE—North Platte, Neb. | | 1430 |
| KFJB—Marshalltown, Iowa | | 1200 | KGNO—Dodge City, Kans. | | 1340 |
| KFJJ—Klamath Falls, Ore. | | 1210 | KGO—San Francisco, Cal. | | 790 |
| KFJM—Grand Forks, N. D. | | 1370 | KGRS—Amarillo, Texas | | 1410 |
| KFJR—Portland, Ore. | | 1300 | KGU—Honolulu, Hawaii | | 750 |
| KFJZ—Fort Worth, Texas | | 1370 | KGVO—Missoula, Mont. | | 1200 |
| KFKA—Greeley, Colo. | | 880 | KGW—Portland, Ore. | | 620 |
| KFKU—Lawrence, Kans. | | 1220 | KGY—Olympia, Wash. | | 1210 |
| KFNF—Shenandoah, Iowa | | 890 | KHJ—Los Angeles, Cal. | | 900 |
| KFOR—Lincoln, Neb. | | 1210 | KHQ—Spokane, Wash. | | 590 |
| KFOX—Long Beach, Cal. | | 1250 | KICA—Clovis, N. Mex. | | 1370 |
| KFPL—Dublin, Texas | | 1310 | KID—Idaho Falls, Idaho | | 1320 |
| KFFM—Greenville, Texas | | 1310 | KIDO—Boise, Idaho | | 1350 |
| KFPW—Fort Smith, Ark. | | 1210 | KIDW—Lamar, Colo. | | 1420 |
| KFPY—Spokane, Wash. | | 1340 | KIEM—Eureka, Cal. | | 1210 |
| KFQD—Anchorage, Alaska | | 780 | KIEV—Glendale, Cal. | | 850 |
| KFRC—San Francisco, Cal. | | 610 | KIT—Yakima, Wash. | | 1310 |
| KFRO—Longview, Texas | | 1370 | KJBS—San Francisco, Cal. | | 1070 |
| KFRU—Columbia, Mo. | | 630 | KJR—Seattle, Wash. | | 970 |
| KFSD—San Diego, Cal. | | 600 | KLCN—Blytheville, Ark. | | 1290 |
| KFSG—Los Angeles, Cal. | | 1120 | KLO—Ogden, Utah | | 1400 |
| KFUO—St. Louis, Mo. | | 550 | KLPM—Minot, N. D. | | 1240 |
| KFVD—Los Angeles, Cal. | | 1000 | KLRA—Little Rock, Ark. | | 1390 |
| KFVS—Cape Girardeau, Mo. | | 1210 | KLS—Oakland, Cal. | | 1440 |
| KFWB—Hollywood, Cal. | | 950 | KLUF—Galveston, Texas | | 1370 |

| CALL | LOCATION | KCY. | CALL | LOCATION | KCY. |
|----------------------------------|----------|------|------------------------------|----------|-------|
| KLX—Oakland, Cal. | | 880 | KTSA—San Antonio, Texas | | 550 |
| KLZ—Denver, Colo. | | 560 | KTSM—El Paso, Texas | | 1310 |
| KMA—Shenandoah, Iowa | | 930 | KTUL—Tulsa, Okla. | | 1400 |
| KMAC—San Antonio, Tex. | | 1370 | KTW—Seattle, Wash. | | 1220 |
| KMBC—Kansas City, Mo. | | 950 | KUJ—Walla Walla, Wash. | | 1370 |
| KMED—Medford, Ore. | | 1310 | KUMA—Yuma, Ariz. | | 1420 |
| KMJ—Fresno, Cal. | | 580 | KUOA—Fayetteville, Ark. | | 1260 |
| KMLB—Monroe, La. | | 1200 | KUSD—Vermillion, S. D. | | 890 |
| KMLJ—Clay Center, Neb. | | 740 | KVI—Tacoma, Wash. | | 570 |
| KMO—Tacoma, Wash. | | 1330 | KVL—Seattle, Wash. | | 1370 |
| KMOX—St. Louis, Mo. | | 1090 | KVOA—Tucson, Ariz. | | 1260 |
| KMPC—Beverly Hills, Cal. | | 710 | KVOD—Denver, Colo. | | 920 |
| KMTR—Los Angeles, Cal. | | 570 | KVOO—Tulsa, Okla. | | 1140 |
| KNOW—Austin, Texas | | 1500 | KVOR—Colorado Springs, Colo. | | 1270 |
| KNX—Hollywood, Cal. | | 1050 | KVOS—Bellingham, Wash. | | 1200 |
| KOA—Denver, Colo. | | 830 | KWCR—Cedar Rapids, Iowa | | 1430 |
| KOAC—Corvallis, Ore. | | 550 | KWEA—Shreveport, La. | | 1210 |
| KOB—Albuquerque, N. Mex. | | 1180 | KWFF—Hilo, Hawaii | | 1210 |
| KOH—Reno, Nev. | | 1380 | KWG—Stockton, Cal. | | 1290 |
| KOIL—Council Bluffs, Ia. | | 1260 | KWJJ—Portland, Ore. | | 1040 |
| KOIN—Portland, Ore. | | 940 | KWK—St. Louis, Mo. | | 1350 |
| KOL—Seattle, Wash. | | 1270 | KWKC—Kansas City, Mo. | | 1370 |
| KOMA—Oklahoma City, Okla. | | 1480 | KWKH—Shreveport, La. | | 1100 |
| KOMO—Seattle, Wash. | | 920 | KWLC—Decorah, Iowa | | 1270 |
| KONO—San Antonio, Tex. | | 1370 | KWSC—Pullman, Wash. | | 1220 |
| KOOS—Marshfield, Ore. | | 1200 | KWTN—Watertown, S. D. | | 1210 |
| KORE—Eugene, Ore. | | 1420 | KWTO—Springfield, Mo. | | 560 |
| KOTN—Pine Bluff, Ark. | | 1500 | KWYO—Sheridan, Wyo. | | 1370 |
| KOY—Phoenix, Ariz. | | 1390 | KXA—Seattle, Wash. | | 760 |
| KPAC—Port Arthur, Texas | | 1260 | KXL—Portland, Ore. | | 1420 |
| KPCB—Seattle, Wash. | | 710 | KXO—El Centro, Cal. | | 1500 |
| KPJM—Prescott, Ariz. | | 1500 | KXRO—Aberdeen, Wash. | | 1310 |
| KPO—San Francisco, Cal. | | 680 | KXYZ—Houston, Tex. | | 1440 |
| KPOF—Denver, Colo. | | 880 | KYA—San Francisco, Cal. | | 1230 |
| KPPC—Pasadena, Cal. | | 1210 | KYW—Chicago, Ill. | | 1020 |
| KPQ—Wenatchee, Wash. | | 1500 | KZEG—Manila, P. I. | | 720 |
| KPRC—Houston, Texas | | 920 | KZRM—Manila, P. I. | | 618.5 |
| KQV—Pittsburgh, Pa. | | 1380 | LR2—Buenos Aires, Arg. | | 910 |
| KQW—San Jose, Cal. | | 1010 | LR3—Buenos Aires, Arg. | | 950 |
| KRE—Berkeley, Cal. | | 1370 | LR4—Buenos Aires, Arg. | | 990 |
| KREG—Santa Ana, Cal. | | 1500 | LR5—Buenos Aires, Arg. | | 830 |
| KRGV—Weslaco, Texas | | 1260 | LR3—Buenos Aires, Arg. | | 1150 |
| KRKD—Los Angeles, Cal. | | 1120 | LR9—Buenos Aires, Arg. | | 1030 |
| KRKO—Everett, Wash. | | 1370 | LR10—Buenos Aires, Arg. | | 790 |
| KRLD—Dallas, Texas | | 1040 | LS1—Buenos Aires, Arg. | | 710 |
| KRMD—Shreveport, La. | | 1310 | LS2—Buenos Aires, Arg. | | 1190 |
| KROW—Oakland, Cal. | | 930 | LS3—Buenos Aires, Arg. | | 630 |
| KRSC—Seattle, Wash. | | 1120 | LS4—Buenos Aires, Arg. | | 670 |
| KSAC—Manhattan, Kans. | | 580 | LS5—Buenos Aires, Arg. | | 1110 |
| KSCJ—Sioux City, Iowa | | 1330 | LS8—Buenos Aires, Arg. | | 1230 |
| KSD—St. Louis, Mo. | | 550 | LS9—Buenos Aires, Arg. | | 1270 |
| KSEI—Pocatello, Idaho | | 900 | LS10—Buenos Aires, Arg. | | 590 |
| KSL—Salt Lake City, Utah | | 1130 | LU7—Bahia Blanca, Arg. | | 1280 |
| KSLM—Salem, Ore. | | 1370 | NAA—Arlington, Va. | | 690 |
| KSO—Des Moines, Iowa | | 1320 | RDN—San Salvadore, Sal. | | 680 |
| KSOO—Sioux Falls, S. D. | | 1110 | TGW—Guatemala City, Guat. | | 565 |
| KSTP—St. Paul—Minneapolis, Minn. | | 1460 | TGX—Guatemala City, Guat. | | 1400 |
| KSUN—Lowell, Ariz. | | 1200 | TICR—San Jose, C. R. | | 912 |
| KTAB—San Francisco, Cal. | | 560 | TIGP—San Jose, C. R. | | 800 |
| KTAR—Phoenix, Ariz. | | 620 | TIRCA—San Jose, C. R. | | 1100 |
| KTAT—Fort Worth, Tex. | | 1240 | TISO—San Jose, C. R. | | 550 |
| KTBS—Shreveport, La. | | 1450 | VAS—Glacé Bay, N. S. | | 685 |
| KTFI—Twin Falls, Idaho | | 1240 | VE9EK—Montmagny, Que. | | 1195 |
| KTHS—Hot Springs, Ark. | | 1060 | VOAC—St. John's, Nfd. | | 1300 |
| KTM—Los Angeles, Cal. | | 780 | VOAS—St. John's, Nfd. | | 940 |
| KTRB—Modesto, Cal. | | 740 | VOGY—St. John's, Nfd. | | 840 |
| KTRH—Houston, Texas | | 1290 | VONF—St. John's, Nfd. | | 955 |
| | | | VOWR—St. John's, Nfd. | | 681 |

| CALL | LOCATION | KCYS. | CALL | LOCATION | KCYS. |
|----------------------------------|----------|-------|---------------------------|----------|-------|
| WAAB—Boston, Mass. | | 1410 | WCLO—Jamesville, Wis. | | 1200 |
| WAAF—Chicago, Ill. | | 920 | WCLS—Joliet, Ill. | | 1310 |
| WAAT—Jersey City, N. J. | | 940 | WCNW—Brooklyn, N. Y. | | 1590 |
| WAAW—Omaha, Neb. | | 660 | WCOA—Pensacola, Fla. | | 1340 |
| WABC—New York, N. Y. | | 860 | WCOC—Meridian, Miss. | | 880 |
| WABI—Bangor, Me. | | 1209 | WCOL—Columbus, Ohio | | 1210 |
| WABY—Albany, N. Y. | | 1370 | WCRW—Chicago, Ill. | | 1210 |
| WACO—Waco, Texas | | 1420 | WCSC—Charleston, S. C. | | 1360 |
| WADC—Akron, Ohio | | 1320 | WCSH—Portland, Me. | | 940 |
| WAGF—Dothan, Ala. | | 1370 | WDAE—Tampa, Fla. | | 1220 |
| WAGM—Presque Isle, Maine | | 1420 | WDAF—Kansas City, Mo. | | 610 |
| WAIU—Columbus, Ohio | | 640 | WDAG—Amarillo, Texas | | 1410 |
| WALA—Mobile, Ala. | | 1380 | WDAH—El Paso, Texas | | 1310 |
| WALR—Zanesville, Ohio | | 1210 | WDAS—Philadelphia, Pa. | | 1370 |
| WAML—Laurel, Miss. | | 1310 | WDAY—Fargo, N. D. | | 940 |
| WAPI—Birmingham, Ala. | | 1140 | WDBJ—Roanoke, Va. | | 930 |
| WARD—Brooklyn, N. Y. | | 1400 | WDBO—Orlando, Fla. | | 580 |
| WASH—Grand Rapids, Mich. | | 1270 | WDEL—Wilmington, Del. | | 1120 |
| WATR—Waterbury, Conn. | | 1190 | WDEV—Waterbury, Vt. | | 550 |
| WAVE—Louisville, Ky. | | 940 | WDGY—Minneapolis, Minn. | | 1180 |
| WAWZ—Zarephath, N. J. | | 1350 | WDNC—Durham, N. C. | | 1500 |
| WAZL—Hazleton, Pa. | | 1420 | WDOD—Chattanooga, Tenn. | | 1280 |
| WBAA—W. Lafayette, Ind. | | 890 | WDRG—Hartford, Conn. | | 1330 |
| WBAL—Baltimore, Md. | 760-1060 | | WDSU—New Orleans, La. | | 1250 |
| WBAP—Ft. Worth, Tex. | | 800 | WDZ—Tuscola, Ill. | | 1070 |
| WBAX—Wilkes-Barre, Pa. | | 1210 | WEAF—New York, N. Y. | | 660 |
| WBBC—Brooklyn, N. Y. | | 1400 | WEAN—Providence, R. I. | | 780 |
| WBBL—Richmond, Va. | | 1210 | WEBC—Superior, Wisc. | | 1290 |
| WBEM—Chicago, Ill. | | 770 | WEBQ—Harrisburg, Ill. | | 1210 |
| WBBR—Brooklyn, N. Y. | | 1300 | WEBR—Buffalo, N. Y. | | 1310 |
| WBBZ—Ponca City, Okla. | | 1200 | WEDC—Chicago, Ill. | | 1210 |
| WBCM—Bay City, Mich. | | 1410 | WED—Rocky Mount, N. C. | | 1420 |
| WBEN—Buffalo, N. Y. | | 900 | WEEI—Boston, Mass. | | 590 |
| WBEO—Marquette, Mich. | | 1310 | WEEU—Reading, Pa. | | 830 |
| WBHS—Huntsville, Ala. | | 1200 | WEHC—Charlottesville, Va. | | 1350 |
| WBIG—Greensboro, N. C. | | 1440 | WEHS—Cicero, Ill. | | 1420 |
| WBNO—New Orleans, La. | | 1200 | WELL—Battle Creek, Mich. | | 1420 |
| WBNS—Columbus, O. | | 1430 | WENR—Chicago, Ill. | | 870 |
| WBNX—New York, N. Y. | | 1350 | WESG—Elmira, N. Y. | | 1090 |
| WBOQ—New York, N. Y. | | 860 | WEVD—New York, N. Y. | | 1300 |
| WBOV—Terre Haute, Ind. | | 1310 | WEW—St. Louis, Mo. | | 760 |
| WBRB—Red Bank, N. J. | | 1200 | WEXL—Royal Oak, Mich. | | 1310 |
| WBRC—Birmingham, Ala. | | 930 | WFAA—Dallas, Texas | | 890 |
| WBRE—Wilkes-Barre, Pa. | | 1310 | WFAB—New York, N. Y. | | 1300 |
| WBSO—Babson Park, Mass. | | 920 | WFAM—South Bend, Ind. | | 1200 |
| WBT—Charlotte, N. C. | | 1080 | WFAS—White Plains, N. Y. | | 1210 |
| WBTM—Danville, Va. | | 1370 | WFBC—Greenville, S. C. | | 1300 |
| WBZ—Boston, Mass. | | 990 | WFBE—Cincinnati, Ohio | | 1200 |
| WBZA—Springfield, Mass. | | 990 | WFBG—Altoona, Pa. | | 1310 |
| WCAC—Storrs, Conn. | | 600 | WFBL—Syracuse, N. Y. | | 1360 |
| WCAD—Canton, N. Y. | | 1220 | WFBM—Indianapolis, Ind. | | 1230 |
| WCAE—Pittsburgh, Pa. | | 1220 | WFBZ—Baltimore, Md. | | 1270 |
| WCAL—Northfield, Minn. | | 1250 | WFDE—Flint, Mich. | | 1310 |
| WCAM—Camden, N. J. | | 1280 | WFEA—Manchester, N. H. | | 1340 |
| WCAO—Baltimore, Md. | | 600 | WFI—Philadelphia, Pa. | | 560 |
| WCAP—Asbury Park, N. J. | | 1280 | WFLA—Clearwater, Fla. | | 620 |
| WCAT—Rapid City, S. D. | | 1200 | WGAL—Lancaster, Pa. | | 1500 |
| WCAU—Philadelphia, Pa. | | 1170 | WGAR—Cleveland, Ohio | | 1450 |
| WCAX—Burlington, Vt. | | 1200 | WGBB—Freeport, N. Y. | | 1210 |
| WCAZ—Carthage, Ill. | | 1070 | WGBF—Evansville, Ind. | | 630 |
| WCBX—Allentown, Pa. | | 1440 | WGBI—Scranton, Pa. | | 880 |
| WCBZ—Zion, Ill. | | 1080 | WGCM—Gulfport, Miss. | | 1210 |
| WCBM—Baltimore, Md. | | 1370 | WGES—Chicago, Ill. | | 1360 |
| WCBS—Springfield, Ill. | | 1210 | WGH—Newport News, Va. | | 1310 |
| WCCO—Minneapolis-St. Paul, Minn. | | 810 | WGL—Fort Wayne, Ind. | | 1370 |
| WCFL—Chicago, Ill. | | 970 | WGN—Chicago, Ill. | | 720 |
| WCHS—Charleston, W. Va. | | 580 | WGNV—Chester, N. Y. | | 1210 |
| WCKY—Covington, Ky. | | 1490 | WGPC—Albany, Ga. | | 1420 |

| CALL | LOCATION | KCYS. | CALL | LOCATION | KCYS. |
|-------------------------|----------|-------|---------------------------------|----------|-------|
| WGR—Buffalo, N. Y. | | 550 | WJZ—New York, N. Y. | | 760 |
| WGST—Atlanta, Ga. | | 890 | WKAQ—San Juan, P. R. | | 1240 |
| WGY—Schenectady, N. Y. | | 790 | WKAR—East Lansing, Mich. | | 1040 |
| WHA—Madison, Wis. | | 940 | WKBB—East Dubuque, Ill. | | 1500 |
| WHAM—Rochester, N. Y. | | 1150 | WKBF—Indianapolis, Ind. | | 1400 |
| WHAS—Louisville, Ky. | | 820 | WKBH—La Crosse, Wis. | | 1380 |
| WHAT—Philadelphia, Pa. | | 1310 | WKBI—Cicero, Ill. | | 1420 |
| WHAZ—Troy, N. Y. | | 1300 | WKBN—Youngstown, Ohio | | 570 |
| WHB—Kansas City, Mo. | | 860 | WKBO—Harrisburg, Pa. | | 1200 |
| WHBC—Canton, Ohio | | 1200 | WKBV—Richmond, Ind. | | 1500 |
| WHBD—Mt. Orab, Ohio | | 1370 | WKBW—Buffalo, N. Y. | | 1480 |
| WHBF—Rock Island, Ill. | | 1210 | WKBZ—Muskegon, Mich. | | 1500 |
| WHBI—Newark, N. J. | | 1250 | WKEU—Griffin, Ga. | | 1500 |
| WHBL—Sheboygan, Wis. | | 1410 | WKJC—Lancaster, Pa. | | 1200 |
| WHBQ—Memphis, Tenn. | | 1370 | WKOK—Sunbury, Pa. | | 1210 |
| WHBU—Anderson, Ind. | | 1210 | WKRC—Cincinnati, Ohio | | 550 |
| WHBY—Green Bay, Wis. | | 1290 | WKY—Oklahoma City, Okla. | | 900 |
| WHDF—Calumet, Mich. | | 1370 | WKZO—Kalamazoo, Mich. | | 590 |
| WHDH—Boston, Mass. | | 870 | WLAC—Nashville, Tenn. | | 1470 |
| WHDL—Olean, N. Y. | | 1420 | WLAP—Lexington, Ky. | | 1420 |
| WHEB—Portsmouth, N. H. | | 740 | WLB—Minneapolis-St. Paul, Minn. | | 1250 |
| WHEC—Rochester, N. Y. | | 1430 | WLBC—Muncie, Ind. | | 1310 |
| WHEF—Kosciusko, Miss. | | 1500 | WLBF—Kansas City, Kans. | | 1420 |
| WHFC—Chicago, Ill. | | 1420 | WLBL—Stevens Point, Wis. | | 900 |
| WHIS—Bluefield, W. Va. | | 1410 | WLBW—Erie, Pa. | | 1260 |
| WHJB—Greensburg, Pa. | | 620 | WLBZ—Bangor, Me. | | 620 |
| WHK—Cleveland, Ohio | | 1390 | WLEU—Erie, Pa. | | 1420 |
| WHN—New York, N. Y. | | 1010 | WLIT—Philadelphia, Pa. | | 560 |
| WHO—Des Moines, Ia. | | 1000 | WLLH—Lowell, Mass. | | 1370 |
| WHOM—Jersey City, N. J. | | 1450 | WLNH—Laconia, N. H. | | 1310 |
| WHP—Harrisburg, Pa. | | 1430 | WLS—Chicago, Ill. | | 870 |
| WIBA—Madison, Wis. | | 1280 | WLTH—Brooklyn, N. Y. | | 1400 |
| WIBG—Glenside, Pa. | | 970 | WLVA—Lynchburg, Va. | | 1200 |
| WIBM—Jackson, Mich. | | 1370 | WLW—Cincinnati, Ohio | | 700 |
| WIBU—Poynette, Wis. | | 1210 | WLWL—New York, N. Y. | | 1100 |
| WIBW—Topeka, Kans. | | 580 | WMAL—Washington, D. C. | | 630 |
| WIBX—Utica, N. Y. | | 1200 | WMAQ—Chicago, Ill. | | 670 |
| WICC—Bridgeport, Conn. | | 600 | WMAS—Springfield, Mass. | | 1420 |
| WIL—St. Louis, Mo. | | 1200 | WMAZ—Macon, Ga. | | 1180 |
| WILL—Urbana, Ill. | | 890 | WMBC—Detroit, Mich. | | 1420 |
| WILM—Wilmington, Del. | | 1420 | WMBD—Peoria, Ill. | | 1440 |
| WIND—Gary, Ind. | | 560 | WMBG—Richmond, Va. | | 1210 |
| WINS—New York, N. Y. | | 1180 | WMBH—Joplin, Mo. | | 1420 |
| WIOD—Miami, Fla. | | 1300 | WMBI—Chicago, Ill. | | 1080 |
| WIP—Philadelphia, Pa. | | 610 | WMBO—Auburn, N. Y. | | 1310 |
| WIS—Columbia, S. C. | | 560 | WMBQ—Brooklyn, N. Y. | | 1500 |
| WISN—Milwaukee, Wis. | | 1120 | WMBR—Jacksonville, Fla. | | 1370 |
| WJAC—Johnstown, Pa. | | 1310 | WMC—Memphis, Tenn. | | 780 |
| WJAG—Norfolk, Neb. | | 1060 | WMCA—New York, N. Y. | | 570 |
| WJAR—Providence, R. I. | | 890 | WMEX—Chelsea, Mass. | | 1500 |
| WJAS—Pittsburgh, Pa. | | 1290 | WMFG—Hibbing, Minn. | | 1210 |
| WJAX—Jacksonville, Fla. | | 900 | WMFF—Plattsburg, N. Y. | | 1310 |
| WJAY—Cleveland, Ohio | | 610 | WMFD—Wilmington, N. C. | | 1370 |
| WJBC—Bloomington, Ill. | | 1200 | WMFE—New Britain, Conn. | | 1420 |
| WJBK—Detroit, Mich. | | 1500 | WMMN—Fairmont, W. Va. | | 890 |
| WJBL—Decatur, Ill. | | 1200 | WMPC—Lapeer, Mich. | | 1200 |
| WJBO—Baton Rouge, La. | | 1420 | WMT—Waterloo, Iowa | | 600 |
| WJBW—New Orleans, La. | | 1200 | WNAC—Boston, Mass. | | 1230 |
| WJBY—Gadsden, Ala. | | 1210 | WNAD—Norman, Okla. | | 1010 |
| WJDX—Jackson, Miss. | | 1270 | WNAX—Yankton, S. D. | | 570 |
| WJEJ—Hagerstown, Md. | | 1210 | WNBH—Binghamton, N. Y. | | 1500 |
| WJIM—Lansing, Mich. | | 1210 | WNBH—New Bedford, Mass. | | 1310 |
| WJJD—Chicago, Ill. | | 1130 | WNBO—Washington, Pa. | | 1200 |
| WJMS—Ironwood, Mich. | | 1420 | WNBK—Memphis, Tenn. | | 1430 |
| WJR—Detroit, Mich. | | 750 | WNBX—Springfield, Vt. | | 1260 |
| WJSV—Washington, D. C. | | 1460 | WNBZ—Saranac Lake, N. Y. | | 1290 |
| WJTL—Atlanta, Ga. | | 1370 | WNEL—San Juan, P. R. | | 1290 |
| WJW—Akron, Ohio | | 1210 | WNEW—Newark, N. J. | | 1250 |

| CALL | LOCATION | KCY. | CALL | LOCATION | KCY. |
|---------------------------|----------|------|----------------------------------|----------|------|
| WNOX—Knoxville, Tenn. | | 560 | WSUN—St. Petersburg, Fla. | | 620 |
| WNRA—Muscle Shoals, Ala. | | 1420 | WSVA—Staunton, Va. | | 550 |
| WNYC—New York, N. Y. | | 810 | WSVS—Buffalo, N. Y. | | 1370 |
| WOAI—San Antonio, Texas | | 1190 | WSYB—Rutland, Vt. | | 1500 |
| WOC—Davenport, Iowa | | 1370 | WSYR—Syracuse, N. Y. | | 570 |
| WOCL—Jamestown, N. Y. | | 1210 | WSYU—Syracuse, N. Y. | | 570 |
| WOI—Ames, Iowa | | 640 | WTAD—Quincy, Ill. | | 1400 |
| WOKO—Albany, N. Y. | | 1430 | WTAG—Worcester, Mass. | | 580 |
| WOI—Washington, D. C. | | 1310 | WTAM—Cleveland, Ohio | | 1070 |
| WOMT—Manitowoc, Wis. | | 1210 | WTAQ—Eau Claire, Wis. | | 1330 |
| WOOD—Grand Rapids, Mich. | | 1270 | WTAR—Norfolk, Va. | | 780 |
| WOPI—Bristol, Tenn. | | 1500 | WTAW—College Station, Texas | | 1120 |
| WOR—Newark, N. J. | | 710 | WTAX—Springfield, Ill. | | 1210 |
| WORC—Worcester, Mass. | | 1280 | WTBO—Cumberland, Md. | | 800 |
| WORK—York, Pa. | | 1320 | WTCN—Minneapolis-St. Paul, Minn. | | 1250 |
| WOS—Jefferson City, Mo. | | 630 | WTEL—Philadelphia, Pa. | | 1310 |
| WOSU—Columbus, Ohio | | 570 | WTFI—Athens, Ga. | | 1450 |
| WOV—New York, N. Y. | | 1130 | WTIC—Hartford, Conn. | | 1040 |
| WOW—Omaha, Neb. | | 590 | WTJS—Jackson, Tenn. | | 1310 |
| WOWO—Fort Wayne, Ind. | | 1160 | WTMJ—Milwaukee, Wis. | | 620 |
| WPAD—Paducah, Ky. | | 1420 | WTNJ—Trenton, N. J. | | 1280 |
| WPAX—Thomasville, Ga. | | 1210 | WTOC—Savannah, Ga. | | 1260 |
| WPEN—Philadelphia, Pa. | | 920 | WTRC—Elkhart, Ind. | | 1310 |
| WPFB—Hattiesburg, Miss. | | 1370 | WVFW—Brooklyn, N. Y. | | 1400 |
| WPG—Atlantic City, N. J. | | 1100 | WWAE—Hammond, Ind. | | 1200 |
| WPHR—Petersburg, Va. | | 880 | WWPA—Clarion, Pa. | | 850 |
| WPRO—Providence, R. I. | | 630 | WWJ—Detroit, Mich. | | 920 |
| WPTF—Raleigh, N. C. | | 680 | WWL—New Orleans, La. | | 850 |
| WQAM—Miami, Fla. | | 560 | WWNC—Asheville, N. C. | | 570 |
| WQAN—Scranton, Pa. | | 880 | WWRL—Woodside, N. Y. | | 1500 |
| WQBC—Vicksburg, Miss. | | 1360 | WWSW—Pittsburgh, Pa. | | 1500 |
| WQDM—St. Albans, Vt. | | 1370 | WWVA—Wheeling, W. Va. | | 1160 |
| WRAC—Williamsport, Pa. | | 1370 | WXYZ—Detroit, Mich. | | 1240 |
| WRAW—Reading, Pa. | | 1310 | W1VBS—Waterbury, Conn. | | 1530 |
| WRAX—Philadelphia, Pa. | | 920 | W2XR—Long Island City, N. Y. | | 1550 |
| WRBI—Columbus, Ga. | | 1200 | W6XAI—Bakersfield, Cal. | | 1550 |
| WRBX—Roanoke, Va. | | 1410 | W9XBY—Kansas City, Mo. | | 1530 |
| WRC—Washington, D. C. | | 950 | XEA—Guadalajara, Jal. | | 1060 |
| WRDO—Augusta, Me. | | 1370 | XEAE—Tijuana, B. C. | | 980 |
| WRDW—Augusta, Ga. | | 1500 | XEAF—Nogales, Sonora | | 990 |
| WREC—Memphis, Tenn. | | 600 | XEAL—Mexico City, D. F. | | 1240 |
| WREN—Lawrence, Kans. | | 1220 | XEAL—Mexico City, D. F. | | 660 |
| WRGA—Rome, Ga. | | 1500 | XEAM—Nuevo Laredo, Tames | | 750 |
| WRJN—Racine, Wis. | | 1370 | XEAO—Mexicali, B. C. | | 560 |
| WROK—Rockford, Ill. | | 1410 | XEAW—Reynosa, Tamps. | | 960 |
| WROL—Knoxville, Tenn. | | 1310 | XEAZ—Leon, Guan. | | 1420 |
| WRR—Dallas, Texas | | 1280 | XEB—Mexico City, D. F. | | 1030 |
| WRUF—Gainesville, Fla. | | 830 | XEBC—Agua Caliente, B. C. | | 760 |
| WRVA—Richmond, Va. | | 1110 | XECW—Mexico City, D. F. | | 1310 |
| WSAI—Cincinnati, Ohio | | 1330 | XED—Guadalajara, Jal. | | 1160 |
| WSAJ—Grove City, Pa. | | 1310 | XEE—Durango, Durango | | 1210 |
| WSAN—Allentown, Pa. | | 1440 | XEFA—Mexico City, D. F. | | 1180 |
| WSAR—Fall River, Mass. | | 1450 | XEFB—Monterrey, N. L. | | 1420 |
| WSAZ—Huntington, W. Va. | | 1190 | XEFC—Merida, Yuc. | | 1310 |
| WSB—Atlanta, Ga. | | 740 | XEFE—Nuevo Laredo, Tamps. | | 1370 |
| WSBC—Chicago, Ill. | | 1210 | XEFG—Mexico City, D. F. | | 1100 |
| WSBT—South Bend, Ind. | | 1360 | XEFI—Chihuahua, Chih. | | 720 |
| WSFA—Montgomery, Ala. | | 1410 | XEFJ—Monterrey, N. L. | | 1210 |
| WSGN—Birmingham, Ala. | | 1310 | XEFO—Mexico City, D. F. | | 940 |
| WSIX—Springfield, Tenn. | | 1210 | XEFV—Juarez, Chih. | | 1210 |
| WSJS—Winston-Salem, N. C. | | 1310 | XEFW—Tampico, Tamps. | | 1310 |
| WSM—Nashville, Tenn. | | 650 | XEFZ—Mexico City, D. F. | | 1370 |
| WSMB—New Orleans, La. | | 1320 | XEG—Ensenada, B. C. | | 1280 |
| WSMK—Dayton, Ohio | | 1380 | XEH—Monterrey, N. L. | | 1150 |
| WSOC—Charlotte, N. C. | | 1210 | XEI—Morelia, Mich. | | 1370 |
| WSPA—Spartanburg, S. C. | | 1420 | XEJ—Juarez, Chih. | | 1020 |
| WSPD—Toledo, Ohio | | 1340 | XEK—Mexico City, D. F. | | 990 |
| WSUI—Iowa City, Iowa | | 880 | XEKL—Leon, Guan. | | 920 |

| CALL | LOCATION |
|-------|---------------------------|
| XEMA | Tampico, Tamps. |
| XEMO | Tijuana, B. C. |
| XEMZ | Tijuana, B. C. |
| XEN | Mexico City, D. F. |
| XENT | Nuevo Laredo, Tamps. |
| XEOX | Saltillo, Coah. |
| XEP | Mexico City, D. F. |
| XEPN | Piedras Negras, Coah. |
| XES | Tampico, Tamps. |
| XET | Monterrey, N. L. |
| XETB | Torreon, Coah. |
| XETH | Puebla, Puebla |
| XETW | Mexico City, D. F. |
| XEU | Veraacruz, V. C. |
| XEW | Mexico City, D. F. |
| XEWZ | Mexico City, D. F. |
| XEX | Monterrey, N. L. |
| XEXX | Mexico City, D. F. |
| XEY | Merida, Yuc. |
| XEYZ | Mexico City, D. F. |
| XEZZ | San Luis Potosi, S. L. P. |
| XFA | Aguascalientes, Ags. |
| XFB | Jalapa, V. C. |
| XFC | Aguascalientes, Ags. |
| XFD | Orizaba, V. C. |
| XFO | Mexico City, D. F. |
| XFX | Mexico City, D. F. |
| YV1RC | Caracas, Venezuela |
| YV2RC | Caracas, Venezuela |
| YV3RC | Caracas, Venezuela |
| 10AK | Stratford, Ont. |
| 10BP | Wingham, Ont. |
| 10BQ | Brantford, Ont. |
| 10BU | Canora, Sask. |
| 1YA | Auckland, N. Z. |
| 2YA | Wellington, N. Z. |
| 3YA | Christchurch, N. Z. |
| 4QG | Brisbane, Aust. |
| 5CK | Crystal Brook, Aust. |
| 5CL | Adelaide, Aust. |
| 2BL | Sydney, Aust. |
| 3LO | Melbourne, Aust. |
| 4RK | Rockhampton, Aust. |
| 3AR | Melbourne, Aust. |

KCYS.

| |
|------|
| 1080 |
| 860 |
| 1210 |
| 710 |
| 910 |
| 640 |
| 820 |
| 590 |
| 970 |
| 690 |
| 1310 |
| 1210 |
| 820 |
| 980 |
| 890 |
| 1150 |
| 1310 |
| 850 |
| 1200 |
| 780 |
| 1370 |
| 1310 |
| 1270 |
| 810 |
| 1340 |
| 940 |
| 610 |
| 960 |
| 880 |
| 1200 |
| 1200 |
| 1200 |
| 650 |
| 570 |
| 720 |
| 760 |
| 630 |
| 730 |
| 855 |
| 806 |
| 910 |
| 610 |

NNRC HAM NOTES

Although a recent addition to the club, William E. Mays, Linden, N. J., is an old timer on the ham frequencies where he is known as W2CEJ. Bill acquired his call back in '28, is mostly CW on 80 and 20 meters, likes to chew the rag and will never let a QSP go by. Two rigs of low and medium power are used, both crystal controlled.

Our eminent Jersey City DXer, Charles M. O'Brien, owns the two amateur calls W2EQS and W3DPY. Charlie has relayed important traffic, has worked sixes and sevens, likes rag chews and thinks ham radio is a great game and a swell hobby. W2EQS will soon burst forth with a new crystal controlled rig working fone on 160 and CW on 80, 40 and 20 meters.

Howard B. Beidleman, the club's technical advisor, has long owned a ham license and the call W2FHC. Howard, believe it or not, likes his rag chews and can be found near the low frequency end of the 80 meter band with an M.O.P.A., using a pair of hard-pushed 'tens in the final. Class A fone is contemplated when the depression is over.

W2FXE is Bill Tucker's ham name. Bill hails from Irvington, N. J., and has worked practically all the bands with both fone and CW, including some commendable 5 meter activities. At present W2FXE keys a 47 crystal oscillator on 7280 Kcs., and invites ham members to chew the rag any evening. Bill enjoys entering contests, welcomes a QSP and has worked all of the U. S. and a number of foreigners.

Up in West Hartford, Conn., Sidney Kaufman operates crystal controlled 160 meter fone under the call W1IFH. Although licensed only a few months, Sid has a fine business QSO log, having worked the 1st, 2nd, 3rd and 8th call districts. Like most of the fone men, W1IFH likes to chat over the mike, but would not turn down any DX that came his way.

W 2 H R N

The fifth annual radio party of the International Radio Club is to be held at the Miami Biltmore Hotel in Coral Gables, Fla., January 7, 8 and 9, according to its president, Jack Rice. More than 300 radio stations and scores of radio notables will participate in this nation-wide series of broadcasts to promote good will between Miami and other communities.

(Continued from Page 3)

has been exceptionally good along the eastern seaboard. Various reasons have been advanced for this phenomena but it is safe to say that in most instances it is by reason of the use of super power which seems to be in vogue with broadcasters in all sections of the world. European stations are in most cases, quite prompt in answering listeners letters and in verifying correct reports of reception.

APPLICATION FOR MEMBERSHIP

I am interested in receiving membership information from The Newark News Radio Club and a copy of your special program listings issued weekly:

Name

Street and No.

City and State

(Please Print)

SHORT WAVE NOTES

THEY TELL US . . . that ZHI, Malay States, 6,012 kcs., is coming through weakly, but regularly, Monday, Wednesday and Thursday from 5.45 to 8.15 A. M., EST; their address is Radio Service Co., 20 Orchard Street, Singapore, Malaya . . . that ZGE, Kuala Lumpur, 6,130 kcs., is heard Sunday, Tuesday and Friday from 6.45 to 8.45 A. M., EST. . . that FZR, Saigon, French Indo-China, has been heard in communication with Paris on 16,210 kcs., Wednesdays, from 7 to 8 A. M., EST., and irregularly between 10 and 11 A. M. An identifying note of a three-tone chime is used . . . that harmonics from the following are liable to confuse SW fans: CFCT, Victoria, B. C., a broadcast station on 1450 kcs., is sometimes heard on 50 meters; XEBC, Agua Caliente, Mexico, 760 kcs., is heard on 9,900, or close to EAQ in Madrid, Spain:—As previously mentioned, XENT, Nuevo Laredo, Mexico, has a harmonic on about 6,720 kcs., and also on 4,610 kcs., although on a broadcast frequency of 1118 kcs. . . . that VK3LR, Melbourne, Aust., have changed schedule; they now start at 11 P. M., instead of 1 A. M. . . . that VK3ME, Melbourne, Aust., also broadcasts Sunday from 5 to 7 A. M., EST., in addition to the regular Wednesday and Saturday transmissions of 5 to 6.30 and 5 to 1 A. M., EST., respectively. A frequency of 9,510 kcs. is being used.

That if you want real Cuban music, listen to COC, Havana, 6010 kcs., every Saturday starting at 11.30 P. M., . . . that COA, a new Cuban, on 9,500 kcs., broadcasts nightly from 8 to 10:30 . . . that our old friend Frank Jones (of 6KW fame) is transmitting under the call CM6XS, from Tunicucu, Cuba, on 8250 kcs., and is being heard from 10 to 10:30 in the evening . . . that PRADO, Ecuador, is being heard very nicely Thursdays from 9 to 11:30 P. M. . . . that KQH, Kahuku, Hawaii, changes frequency to 14,920 kcs., that you SWLs who want to log Russia will find RV15, Khabarovsk, Siberia, on 4250 kcs., best from 4 to 9 A. M. . . . that RKI and RNE (15040 and 12,001 kcs., respectively) are going to test (or already are) for American SW fans every Saturday between 9 and 11 A. M., with WQP, Rocky Point, on 13901 kcs. . . . that when writing for a verification to Russia, address as U. S. S. R. . . . that HJ3ABB, Bogota, Columbia, will send gifts to those reporting reception of advertising programs. They use 7400 kcs., and the time of these broadcasts is from 7 to 10:30 P. M. . . . that the 49 meter band is now at its best, which, of course, is only natural at this time of the year.

JAPANESE SCHEDULE

According to Carroll H. Weyrich, 4310 Evans Chapel Road, Baltimore, three Japanese stations are to enter the super-power class during the coming year. JOAK-1, Tokyo, is to jump from 10,000 up to 150,000 watts, while JOGK, Kumamoto, and JOBK-1, Osaka, are to use 100,000 each instead of their present 10,000 watts.

Daily programs of JOAK-1 are relayed by all J stations except JOBK, JODK-1, JOAK-2, JFAK and JQAK.

JOBK, JODK-2, JFAK, JFBK and JQAK relay at times, JOAK-1, while JOAK-2 has its own programs which are often relayed by JOCK-2 and JOBK-2.

The operating time for all stations transmitting programs of JOAK-1 is from 7 A. M., to 21.45 P. M., Japanese central time, in November, December, January, February and March. In the other months of the year they are on the air at 6 A. M., JCT. From April to October, JFAK, JFBK and JQAK operate one hour later than all other J stations, due to the difference in time.

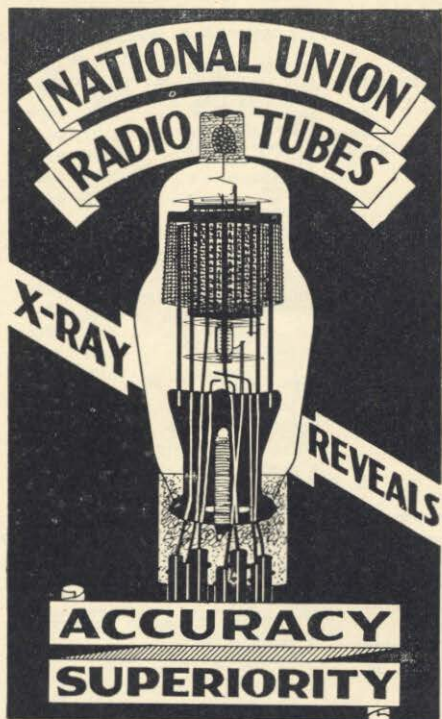
NNRC LISTENING POSTS

- 1 -E. L. Peters, Box 65, Westport, Nova Scotia, Canada.
- 2 -Louis J. McVey, Route 10, Box 144B, Sparrows Point, Md.
- 3 -Raymond Mitchell, 219 Third Avenue, North, Nashville, Tenn.
- 4 -James Wootton, R. R. No. 7, London, Ontario, Canada
- 5 -Donald Hill, Broken Bow, Nebraska.
- 6 -Paul Sampson, 1820 College Avenue, Regina, Sask, Canada.
- 7 -John P. Kramer, 4401 Fourth Avenue, Brooklyn, N. Y.
- 8 - E. A. Feichtner, 53 Holmes Street, Erie, Pa.
- 9 -Carl Forestieri, 463 East 185th Street, New York City.
- 10-Ray E. Everly, 102 West Washington Street, Newton, Ill.
- 11-George C. Valentine, 55 Searing Street, Dover, N. J.
- 12-James A. Dunnigan, 194 North Street, New Britain, Conn.
- 14-Herbert J. Blythe, 3 North Cornwall Ave; Ventnor City, N. J.
- 15-Irwin Beitman, 249 Gates Avenue, Elyria, Ohio.
- 16-John A. Shanks, Russellville, Tenn.

PRINCIPAL SHORT WAVE STATIONS OF THE WORLD

| Dial | Meters | Kcs. | Call | Location | Time (EST) |
|------|--------|-------|-------|-----------------------|--|
| — | 13.93 | 21530 | W8XK | Pittsburgh, Pa. | 7 A. M. to 3 P. M. |
| — | 14.38 | 20860 | EDM | Madrid, Spain | Mornings |
| — | 14.49 | 20700 | LSY | Monte Grande, Arg. | Mornings |
| — | 14.97 | 20040 | OPL | Leopoldville, Congo | Mornings |
| — | 15.06 | 19920 | HSJ | Bangkok, Siam | Early mornings |
| — | 15.24 | 19690 | CEC | La Granja, Chile | Early mornings |
| — | 15.37 | 19520 | IRW | Torrenova, Italy | Irregular |
| — | 15.50 | 19350 | FTM | St. Assise, France | Early mornings |
| — | 15.62 | 19210 | ORG | Ruyssedele, Belgium | Phones Belgium Congo mornings |
| — | 15.88 | 18890 | ZSS | Klipheuvcl, S. Africa | Early mornings |
| — | 15.93 | 18830 | PLE | Bandoeng, Java | Irregular |
| — | 16.04 | 18700 | DFQ | Nau. n, Germany | Early mornings |
| — | 16.04 | 18700 | IRZ | Torrenova, Italy | Early mornings |
| — | 16.11 | 18620 | GAU | Rugby, England | Phones early morning |
| — | 16.47 | 18210 | KUS | Manila, P. I. | Phones Germany and Japan |
| — | 16.55 | 18130 | PMC | Bandoeng, Java | Irregular |
| — | 16.85 | 17800 | PCV | Kootwijk, Holland | Early mornings |
| — | 16.86 | 17790 | XGBB | Shanghai, China | Early mornings |
| — | 16.86 | 17790 | GSG | Daventry, England | 6 to 7.30 A. M. |
| — | 16.87 | 17780 | W3XAL | Bound Brook, N. J. | 10 A. M. to 1 P. M. |
| — | 19.04 | 15760 | JYT | Tokyo, Japan | Irregular |
| — | 19.20 | 15620 | JVF | Nasaki, Japan | Phones KWU in evening |
| — | 19.46 | 15420 | KWO | Dixon, Calif. | Phones KWU in evening |
| — | 19.56 | 15330 | W2XAD | Schenectady, N. Y. | 2.30 to 3.30 P. M. |
| — | 19.64 | 15270 | W2XE | Wayne, N. J. | 11 A. M. to 1 P. M. |
| — | 19.67 | 15250 | RIM | Tachkent, USSR. | Phone |
| — | 19.68 | 15243 | | Pontoise, France | 7.30 to 11 P. M. |
| — | 19.72 | 15210 | W8XK | Pittsburg, Pa. | 11 A. M. to 5.15 P. M. |
| — | 19.73 | 15200 | DJB | Zeesen, Germany | 8 to 11.30 A. M. and 4 to 5.30 A. M., Sunday |
| — | 19.84 | 15123 | HVJ | Vatican City, Italy | 5 to 5.15 A. M. and 10 to 10.40 A. M. Sat. |
| — | 19.95 | 15000 | RKI | Moscow, USSR. | Sunday mornings |
| — | 20.65 | 14530 | XDA | Mexico D. F., Mexico | Phone |
| — | 20.78 | 14440 | GBW | Rugby, England | Phone |
| — | 21.93 | 13685 | HAS2 | Budapest, Hungary | 7 to 9.30 A. M., irregularly |
| — | 22.66 | 13240 | KBJ | Manila, P. I. | Phone |
| — | 24.83 | 12082 | CT1CT | Lisbon, Portugal | 7 to 9 A. M., Sunday and 4 to 6 P. M. Thurs. |
| — | 25.00 | 12000 | RNE | Moscow, USSR. | 6 to 7 A. M. and 10 to 11 A. M., Sunday |
| — | 25.02 | 11990 | FZS | Saigon, Indo China | Phones irregularly |
| — | 25.25 | 11880 | | Pontoise, France | 11.15 A. M. to 2.15 P. M. and 4 to 6 P. M. |
| — | 25.29 | 11860 | GSE | Daventry, England | 9.15 A. M. to 12.45 P. M. |
| — | 25.36 | 11830 | W2XE | Wayne, N. J. | 3 to 5 P. M. |
| — | 25.51 | 11760 | DJD | Zeesen, Germany | Noon to 4.30 P. M. and 5.30 to 10.45 P. M. |
| — | 25.53 | 11750 | GSD | Daventry, England | 2.15 to 4.15 A. M. and 1 to 5.45 P. M. |
| — | 25.57 | 11725 | PHI | Huizen, Holland | 8.30 to 10.30 A. M., except Tues. or Wed. |
| — | 25.58 | 11720 | CJRXX | Winnipeg, Manitoba | Irregular |
| — | 25.63 | 11705 | | Pontoise, France | 3 to 6, 6.15 to 9.15, 10 to 12 P. M. |
| — | 27.93 | 10740 | JVM | Nasaki, Japan | Saturday, 11 P. M. and irregular |
| — | 28.91 | 10370 | WCG | Rocky Point, N. Y. | Works LSX and KFZ |
| — | 28.99 | 10350 | LSX | Buenos Aires, Arg. | Relays Byrd broadcasts |
| — | 29.04 | 10330 | ORK | Ruyssedele, Belgium | 2.45 to 4.15 P. M. |
| — | 29.24 | 10260 | PMN | Bandoeng, Java | Phones Sydney irregularly |
| — | 29.59 | 10140 | OPM | Belgian Congo | Irregular |
| — | 29.79 | 10070 | ENY | Madrid, Spain | Irregular |
| — | 29.84 | 10050 | ZFB | Hamilton, Bermuda | Irregular |
| — | 30.03 | 9990 | LSN | Buenos Aires, Arg. | Irregular |
| — | 30.43 | 9860 | EAQ | Aranjuez, Spain | 5.15 to 7 P. M., and Saturday 1 to 3 P. M. |
| — | 30.52 | 9830 | IRM | Rome, Italy | Irregular |
| — | 31.25 | 9600 | CT1AA | Lisbon, Portugal | 3.30 to 6 P. M., Tuesday to Friday |
| — | 31.27 | 9595 | HBL | Prangins, Switzerland | 5.30 to 6.15 P. M. Saturday 11.30 A. M. |
| — | 31.28 | 9590 | VK2ME | Sydney, Australia | 12.30 to 2.30, 4.30 to 8.30, 9.30 A. M., (Sunday only) |
| — | 31.28 | 9590 | W3XAU | Philadelphia, Pa. | Noon to 8 P. M. |
| — | 31.30 | 9580 | GSC | Daventry, England | 6 to 8 P. M. |
| — | 31.32 | 9579 | VK3LE | Melbourne, Aust. | 3.15 to 7.30 A. M. except Sundays. |
| — | 31.36 | 9570 | W1XAZ | Springfield, Mass. | 7 to 1 A. M., Sunday 9 to 1 A. M. |
| — | 31.38 | 9560 | DJA | Zeesen, Germany | 8 to 11.30 A. M. and 5.15 to 9.15 P. M. |

| Dial | Meters | Kes. | Call | Location | Time (EST) |
|------|--------|------|--------|-------------------------|---|
| — | 31.45 | 9540 | LCL | Jeloy, Norway | Irregular |
| — | 31.48 | 9530 | W2XAF | Schenectady, N. Y. | 7.30 to 11 P. M. |
| — | 31.55 | 9510 | VK3ME | Melbourne, Aust. | 5 to 6.30 A. M., Wednesday to Saturday |
| — | 31.55 | 9510 | GSB | Daventry, England | 2.15 to 4.15 A.M. and 10.45 A.M. to 5.45 P.M. |
| — | 31.57 | 9500 | PRF5 | Rio de Janeiro, Brazil | 5.30 to 6.15 P. M., not Sunday. |
| — | 31.61 | 9490 | WEF | Rocky Point, N. Y. | Contacts LSX and KFZ |
| — | 31.90 | 9415 | PLV | Bandoeng, Java | Irregular |
| — | 32.15 | 9332 | CGA | CJA2, Dartmouth, Canada | Phones Rugby |
| — | 32.33 | 9280 | GBB | Rugby, England | Phone |
| — | 34.56 | 8680 | GBC | Rugby, England | Phone |
| — | 35.80 | 8380 | IAC | Coltano, Italy | Phone |
| — | 37.33 | 8035 | CNR | Radio Rabat, Morocco | 3 to 4 P. M., Sundays |
| — | 37.65 | 7970 | HSP | Bangkok, Siam | Phone irregularly |
| — | 38.47 | 7800 | HBP | Prangins, Switzerland | 5.30 to 6.15 P. M., Saturdays |
| — | 39.89 | 7520 | RKI | Moscow, USSR. | Phones irregularly |
| — | 40.50 | 7410 | EA8AB | Tenerife, Canarias | Not in operation at present |
| — | 40.55 | 7400 | HJ3ABD | Bogota, Colombia | 7 to 11 P. M. |
| — | 40.60 | 7390 | ZLT | Wellington, N. Z. | Phone |
| — | 41.80 | 7180 | CR6AA | Lobito, Angola, Africa | 2.30 to 4.30 P. M. |
| — | 42.00 | 7140 | HJ4ABB | Manizales, Colombia | 8 to 10 P. M. |
| — | 43.17 | 6950 | YNLF | Managua, Nicaragua | Irregular nights |
| — | 43.86 | 6840 | HAT2 | Budapest, Hungary | Phone irregularly |
| — | 44.44 | 6750 | JVT | Nasaki, Japan | 4 to 7.40 A. M. |
| — | 44.71 | 6710 | TIEP | San Jose, Costa Rica | 7 to 10 P. M., except-Sunday |
| — | 44.96 | 6670 | YVQ | Maracay, Venezuela | Phone irregularly |
| — | 45.00 | 6668 | HC2RL | Guayaquil, Ecuador | 5.45 to 8 P.M. Sunday and 9.15 to 11.15 P.M. |
| — | 45.31 | 6620 | PRADO | Riobamba, Ecuador | 9 to 11.30 Thursday |
| — | 45.38 | 6610 | REN | Moscow, USSR. | 4 to 5 P. M. Mon., Wed., Fri., Sat. |
| — | 46.25 | 6485 | HI4D | Santo Domingo, D. R. | Evenings |
| — | 46.30 | 6480 | HJ5ABD | Cali, Colombia | 7 to 10 P. M. except Sunday |
| — | 46.60 | 6440 | HJ1ABB | Baranquilla, Colombia | 6 to 10 P. M. |
| — | 47.50 | 6310 | HIZ | Santo Domingo, D. R. | 11 P. M. to 12.30 A. M. |
| — | 48.62 | 6170 | HJ3ABF | Bogota, Colombia | 7 to 11 P. M. except Sunday |
| — | 48.78 | 6150 | YV3RC | Caracas, Venezuela | 4.30 to 10 P. M. |
| — | 48.78 | 6150 | HJ2ABA | Tunja, Colombia | 6 to 9 P. M. Tuesday, Thursday, Saturday |
| — | 48.83 | 6140 | CJRO | Winnipeg, Manitoba | Nightly |
| — | 48.92 | 6130 | ZGE | Kuala Lumpur, FMS. | 6.40 A. M. to 8.40 A. M. Sun., Tues., Fri. |
| — | 49.00 | 6122 | ZTJ | Johannesburg, S. A. | 11.45 P. M. to 12.30 A. M. and 3.30 to 7 A. M. |
| — | 49.02 | 6120 | YDA | Bandoeng, Java | 5.30 to 11.30 A. M. (N. I. R. O. M.) |
| — | 49.02 | 6120 | W2XE | Wayne, New Jersey | 6 P. M. to 11 P. M. |
| — | 49.08 | 6110 | YV2RC | Caracas, Venezuela | 5.15 to 9.30 P. M. |
| — | 49.09 | 6110 | VE9HX | Halifax, N. S. | 5 to 11 P. M. |
| — | 49.10 | 6110 | VUC | Calcutta, India | 10.30 A. M. to 1 P. M. except Fri. and Sat. |
| — | 49.18 | 6100 | W3XAL | Bound Brook, N. J. | 6.30 P. M. to 1 A. M. Mon., Wed., Sat. |
| — | 49.20 | 6090 | HJ1ABD | Cartagena, Colom. | 7 to 9 P.M. F. and Sa. 7 A.M. to 12 P.M. etc. |
| — | 49.34 | 6080 | OXY | Skamleback, Denmark | From 1 P. M. |
| — | 49.34 | 6080 | W9XAA | Chicago, Illinois | 3 to 4 P. M. Tu., Th., Sat., 3 P. M. to 1 A. M. |
| — | 49.34 | 6080 | CP5 | La Paz, Bolivia | 7.45 to 9.15 P. M. |
| — | 49.40 | 6070 | HJN | Bogota, Colombia | 8.15 P. M. on, irregular |
| — | 49.41 | 6070 | OER2 | Vienna, Austria | 9 A. M. to 5 P. M. |
| — | 49.42 | 6070 | YV5RMO | Maracaibo, Venez. | 5.15 to 9.30 P. M. |
| — | 49.50 | 6060 | W3XAU | Philadelphia, Pa. | 8 to 11 P. M. |
| — | 49.50 | 6060 | VQ7LO | Nairobi, Kenya, Afr. | 11 A. M. to 2 P. M., 3 to 4 A. M. Tu. 8 to 9 A. M. Thursday |
| — | 49.59 | 6050 | GSA | Daventry, England | 6 to 8 P. M. |
| — | 49.65 | 6040 | HJ1ABG | Barranquilla, Col. | 6.30 to 10 P. M. except Sunday |
| — | 49.67 | 6040 | W1XAL | Boston, Mass. | 5.45 to 7.15 P. M. and 7.30 to 9.30 P. M. Sat. |
| — | 49.75 | 6030 | YV6RV | Valencia, Venezuela | Irregular |
| — | 49.80 | 6020 | HIX | Santo Domingo, D. R. | 8.10 to 10.10 P. M. Tuesday and Friday |
| — | 49.83 | 6020 | DJC | Zeesen, Germany | Noon to 4.30, 5.30 to 10.45 P. M. |
| — | 49.83 | 6020 | CQN | Macao, Macao | 7 to 9 A. M. Monday, Wednesday, Friday |
| — | 49.90 | 6010 | ZHI | Singapore, S. S. | 5.40 to 8.10 P. M. Mon., Wed., Thurs., etc. |
| — | 49.90 | 6010 | COC | Havana, Cuba | 4 to 10 P. M. |
| — | 49.92 | 6010 | XEBT | Mexico, D. F. | All evening |
| — | 50.00 | 6000 | RV59 | Moscow, USSR. | 2 to 6 P. M. |
| — | 50.02 | 6000 | YV4RC | Caracas, Venezuela | 4.30 to 10 P. M. |
| — | 51.00 | 5880 | HJ2ABC | Cucuta, Colombia | 6.30 to 9 P. M. |
| — | 51.99 | 5770 | OA4AD | Lima, Peru | Tuesday and Thursday evenings irregular |



Manufacturers of

T U B E S

for all

Types of Radios

PAVEY ENVELOPE & TAG CO.

E N V E L O P E S

OF EVERY DESCRIPTION

Tags for Any Purpose — Plain or Printed

36 GREEN ST., NEWARK, N. J.

Telephone MArket 3-0088

THE DXER'S CORNER.

(Continued from Page 7)

hear it as I have never heard a BC station south of Mexico City." Other 1934-35 additions are CFTP, CRCT and WTMJ.

Although a late starter this season, George Bezilla, Morann, Pa., has verified KIDO, Boise, Ida., and WQBC, Vicksburg, Miss. From now on, George intends to do some intensive dialing; we'll be interested in his results.

A VETERAN

Edward Fletcher, 7616 Clyde Avenue, Chicago, has been DXing for eight years, four under the colors of the NNRC. He writes: "I am beginning to feel like a veteran. My verified list stands at 496. Latest confirmations are from KTUL, KPAC, KGDM, WHEF, CRCM, CRCK, CRCO, CHCK, CFPL, CJLS, and WNEL. Reports are out to WMEX, WNBH, WOSU, WKBN, WPRO, KFDY, CHSJ, CHNC, XEJ, XEMO and LR5."

With fifty new catches received during the past two months and which bring his log close to the 400 mark, J. Herbert Hyde, P. O. Box 82, Elmwood, Conn., is well on his way to acquiring an Ace certificate. Herb lists LR5 and VE9EK as his best catches so far this season.

According to A. Stephen Walbridge, 43 Burton Avenue, Westmount, Quebec, static has been bothersome all this fall. Despite this handicap and restricted time, Steve has listed a number of good ones including XEAF, WHEF, VONF, KPAC, KGDM, and WNRA. His log includes 620 stations of which 466 are verified. Unlike so many other dial twisters, he experienced no trouble procuring his verification from WMEX. Steve advises that hereafter he is resorting to the double postal card method of reporting reception.

LEON HOCHMAN

170 EAST 94th STREET
BROOKLYN, N. Y.

Radios of all Makes and Types
Serviced and Repaired

REASONABLE RATES

Interesting Radio calls

WVFW—Veterans Foreign Wars
KTRH—The Rice Hotel
WIOD—Wonderful Isle of Dreams
WEVD—Eugene V. Debs.
KTHS—Kum To Hot Springs
WINS—International News Service
VONF—Voice of Newfoundland
KWSC—Washington State College
KTAT—Texas Air Transport
KFWB—Warner Brothers
WTAG—Worcester Telegram and Gazette
CFNB—Fredericton, New Brunswick
WLIT—Lit Brothers
WTMJ—The Milwaukee Journal
WSVS—Seneca Vocational School
KLRA—Little Rock, Arkansas
KSTP—St. Paul
WATR—Waterbury Republican
WCRW—Clinton R. White
WFAS—Frank A. Seitz
WSBT—South Bend Tribune
CHLP—La Patrie
CMBC—Cuba My Beautiful Cuba
WLAC—Life and Casualty
WSM—We Shield Millions
WG3T—Georgia State Tech
KFYO—Kum Find Your Opportunity
KRGV—Rio Grande Valley

KLX, 880 Kilocycles, Oakland, Calif., are on the air every last Friday morning of the month from 2 to 3, EST, with Stuart Hamblen's Roundup presenting hill billy numbers and popular selections of the day. The programs are announced by Douglas G. Montell, who is anxious to hear from listeners in all sections with comment. KLX's December 28 broadcast will be dedicated to The Newark News Radio Club.

It is rumored that WFI and WLIT, both in Philadelphia, will merge shortly after January 1, under the call WFIL with a change in staff, location and power. With the entrance of KYW into the City of Brotherly Love, these two outlets will split the NBC-WJZ network with KYW becoming the Philadelphia key station for NBC-WEAF.

CHRISTMAS GREETINGS

A Merry Xmas and a Happy New Year

Director and Mrs. E. J. Obert

The Season's Greetings to NNRCers

Vice President and Mrs. W. H. Applegate

Merry Christmas and a Prosperous New Year

Director and Mrs. Lloyd Hahn

Greetings of the season to my fellow members

Director Jack B. Schneider

A Joyous Xmas and a Happy New Year

Director John W. Reichert

Happy Holiday Greetings and a New Year of good DXing

Director A. J. Koempel

To the host of radio listeners who comprise that great fraternity, The Newark News Radio Club, a very Merry Xmas and a Happy and Prosperous New Year

Director Walter E. Doty

A Happy and Prosperous Holiday Season

Director Dale Kennedy

Merry Christmas and Happy New Year to my friends, members and correspondents

Alfred W. Oppel, Executive Secretary

Greetings of the Season to all my club friends

Lester Kraemer, Treasurer

A Happy Yuletide and a Prosperous New Year

Vice President Frank Scott

To my friends and members of the NNRC
—Christmas and New Year's greetings.

Margaret Shafer,
Recording Secretary.

Christmas greetings and a New Year of happiness and success

Irving R. Potts, President.

COMMENT

John Beardall, director, CFCO, Chatham, Ontario: "I find The Dialist contains many interesting items which I shall be pleased to make use of and quote from during our special radio club broadcast. May I congratulate you upon the excellent setup of your magazine."

Clermont M. Zimmerman, 1026 Wolverton Street, Sunbury, Pa.: "I am glad to say The Dialist is up to expectations. It will fill a long-felt need of space for the activities of NNRC members and will surely be a success.

Henry Bowe, 431 Belmont Avenue, Newark, N. J.: "As a charter member of The Newark News Radio Club I'll be a charter subscriber to The Dialist. It is the best magazine for DXers and club news that I have ever seen."

Herbert J. Blythe, 3 North Caldwell Avenue, Ventnor City, N. J.: "I am enclosing a dollar bill for a year's subscription. I think it will double the return on my investment. I would rename The Dialist 'The DXers' Paradise.'"

Edward Fletcher, 7616 Clyde Avenue, Chicago: "I want those responsible for The Dialist to know it is fine. It is another Newark News Radio Club masterpiece, worthy of the organization. I especially like the listing of frequently heard foreign stations in the main log and I am glad that every little 5, 10 or 15 watter in Angora or Patagonia is omitted."

Just as it does with its BC members, The Newark News Radio Club now classifies its short wave DXers according to the number of stations logged and verified. Certificates will be awarded for the following grades: Junior, 100 stations heard, 50 verified; Senior, 150 stations heard, 75 verified; Ace, 200 stations heard and 100 verified.

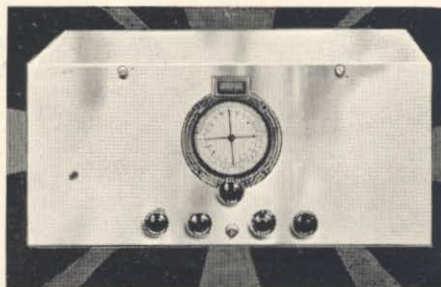
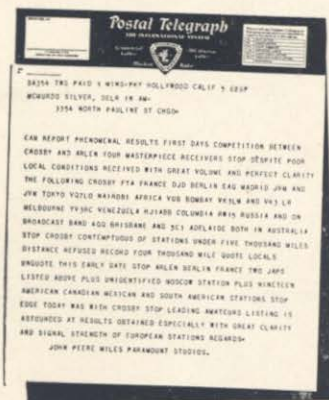
The charming person who answers the telephone in James Melton's apartment, makes appointments for the singing star of "Town Hall Tonight," and identifies herself as the NBC's tenor's "secretary," is Mrs. Melton. Beautiful and blonde, she really does her husband's secretarial work, answering fan letters, among other things. Mrs. Melton thinks it keeps everything on a more impersonal and business-like plan if she calls herself a secretary.

MASTERPIECE III

Smashes All Distance Reception Records in California Contest

Everyone who has tuned and heard Masterpiece III wants to keep it. Columbia Broadcasting System heard it, tested it, then installed it as official studio receiver in Chicago. You can put Masterpiece III to the same tests, under your own reception conditions . . . without risking one cent of your money.

Bing Crosby and Richard Arlen, each using a Masterpiece III, have broken all established records for domestic broadcast and foreign short wave reception. 122 stations in a week! 28 foreign countries logged! Every station at least 5000 miles away! The Masterpiece III, that I will build to your order, will be fully as capable as the two receivers used by these two famous people in the Hollywood International DX Contest. Masterpiece III, by any standard of measurement, by any kind of competitive tests, and in the opinion of everyone who has seen it in action, we believe, is the most complete, the most capable, the most outstanding all-wave radio receiver ever engineered. It will not only out-perform anything else in laboratory demonstrations, but is positively and unconditionally guaranteed to out-perform any other radio receiver in existence . . . right in your own home!



Mc MURDO SILVER, Inc.
3354 N. PAULINA STREET
CHICAGO, U.S.A.

10 DAY TRIAL

You can try it 10 full days, then send it back if you want to. It's just as simple as that. Check the coupon and mail it at once, for particulars and full details of Masterpiece III's most amazing specifications.

MCMURDO SILVER, INC.
3354 N. Paulina St.,
Chicago, U. S. A.

Send me full particulars and specifications of Masterpiece III

Name

Street

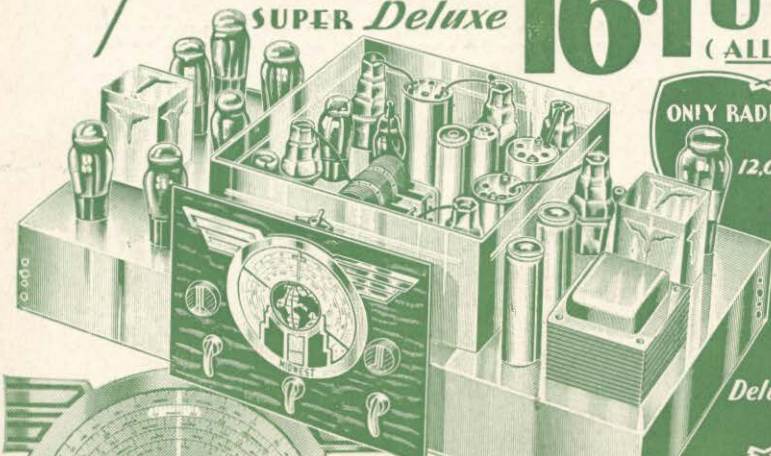
Town State

SAVE UP TO 50% by BUYING YOUR RADIO *Direct from* MIDWEST LABORATORIES

Thrill to Guaranteed World-Wide HIGH FIDELITY Performance with This Amazing New 1935 MIDWEST

SUPER Deluxe

16-TUBE ALL-WAVE Radio! (ALL FIVE WAVE BANDS)



ONLY RADIO COVERING
9 TO 2,400 METERS.
12,000 MILE TUNING RANGE

WORLD'S GREATEST
RADIO VALUE

\$57⁵⁰
with New

Deluxe Auditorium-Type
SPEAKER
(LAST TUBES)

30 Days FREE Trial!

TERMS
as low as

\$5⁰⁰
DOWN

BEFORE you buy any radio write for the new FREE 1935 Midwest "Fifteenth Anniversary" catalog and see for yourself the many reasons why 110,000 satisfied customers bought their radios direct from the Midwest Laboratories and saved from $\frac{1}{4}$ to $\frac{1}{2}$. Why pay more than the direct-to-you laboratory price? You, too, can make a positive saving of from 30% to 50% by buying this more economical way. Learn why Midwest outperforms sets costing up to \$200.00 and more. Never before so much radio for so little money! Midwest gives you triple protection with: One-Year Guarantee, Foreign Reception Guarantee, Money-Back Guarantee.

50 ADVANCED 1935 FEATURES
Many exclusive features include: Micro-Tenuator...Fidel-A-Stat... Separate Audio Generator...Ceramic Coil Forms, etc. Only Midwest covers a tuning range of 9 to 2400 meters (33 Megacycles to 125 KC)—enabling you to easily and successfully tune in even low-powered foreign stations up to 12,000 miles away with crystal-clear, loud-speaker reception.

All 5 Wave Bands enable you to enjoy today's finest High Fidelity American programs. In addition, you get Canadian, police, amateur, commercial, airplane and ship broadcasts and derive new delight and new excitement from un-

equalled world-wide broadcasts... England, France, Germany, Spain, Italy, Russia, Australia, etc. Send today for money-saving facts!

SENSATIONAL HIGH FIDELITY RECEPTION
This bigger, better, more powerful, clearer-toned, super selective, 16-tube radio gives you absolute realism—assures you of life-like, crystal-clear tone—unlike anything you have ever experienced before. You will hear one more octave—overtone—that cannot be brought in with ordinary radios. Now, hear every instrument, every voice, every shade and inflection of speech.

Take advantage of the amazing 30-day FREE trial offer. Send for FREE catalog.

Listeners to World-Wide Reception

Here are some of the stations I have heard:
EAQ, Madrid, Spain...
DJB, Zeeven, Germany...
GSR, GSF, Daventry, England...
VKME, Melbourne, Australia...
HJABE, HJBARF, Colombia, S. A., and many more...
Golden Hatfield, 2202 Grand Avenue.

Peruvian Prizes Foreign Reception

Limá, Peru...
We have heard the five continents with your Midwest...
Have received Madrascar, Sydney, London, Paris, Vienna, Moscow, Madrid, New York, Shanghai, Tokyo, and also South American transmitters. Marquis H. Buchanan, Apartado 96, Plaza San Martín, 171.

Only Midwest Gives You Multi-Function Dial

This dial was designed in keeping with the trend of the times, yet is not an airplane dial! It is a many-purpose dial that performs many functions. Now, Midwest guarantees that inexperienced persons can secure good foreign reception. Send for FREE miniature of actual rotating dial which clearly shows these outstanding advantages:

1. Dial calibrated in Kilocycles, Megacycles and Meters;
2. Call letters of American Broadcast Stations printed on dial and illuminated;
3. Slow-Fast, Smooth-Acting Tuning;
4. Station Group Locator;
5. Simplified Tuning Guide Lights;
6. Automatic Select-O-Band Indicator;
7. Illuminated Pointer Indicator;
8. Silent Shadow Tuning—Improvement on Meter Tuning;
9. Centralized Tuning.

New Style Consoles

The Midwest 36-page catalog pictures a complete line of beautiful, artistic de luxe console and chassis in four colors. Write for new FREE catalog today! Midwest long-range radios are priced as low as \$27⁵⁰

DEAL DIRECT WITH LABORATORIES

Increasing costs are sure to result in higher radio prices soon. Buy before the big advance. NOW...while you can take advantage of Midwest's sensational values...no middlemen's profits to pay. You can order your 1935 High Fidelity radio from the new Midwest catalog with as much certainty of satisfaction as if you were to select it in our great radio laboratories. You save 30% to 50% when you buy this popular way...you get 30 days FREE trial...as little as \$5.00 down puts a Midwest radio in your home. Satisfaction guaranteed or money back. Write for new FREE catalog today.

SAVE UP TO 50%

MAIL COUPON TODAY! FOR AMAZING 30-DAY FREE TRIAL OFFER AND NEW 1935 CATALOG

MIDWEST RADIO CORP., Dept. 854 Cincinnati, Ohio.
Without obligation on my part send me your new FREE 1935 catalog, FREE Miniature Dial, and complete details of your liberal 30-day FREE trial offer. This is NOT an order.

User-Agents Make Easy Extra Money

Check Here (or Details)

Name _____
Address _____
Town _____ State _____

MIDWEST RADIO CORP.

DEPT. 854 — CINCINNATI, OHIO, U. S. A.

Established 1920

Cable Address Miraco. . . . All Codes