

# GLIMPSES OF ECUADOR...



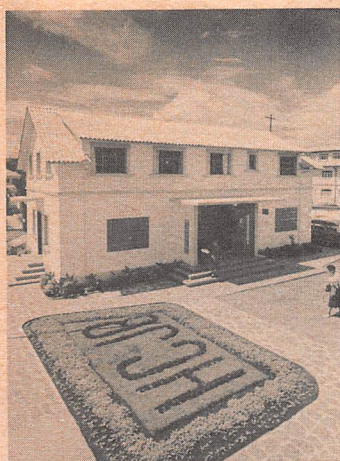
Back Home Hour - World Radio Chapel



Mt. Cotopaxi (18,000 ft.) - Quito in Foreground



Left to Right: Studio, Correspondence Engineering Buildings



Wallop Correspondence and P.O. Bldg.



10 of August Avenue - Quito



Llama of the High Andes



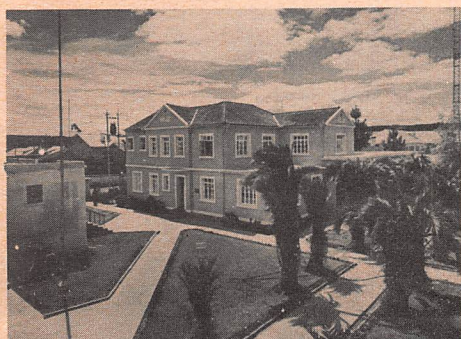
Newly Inaugurated Legislative Palace



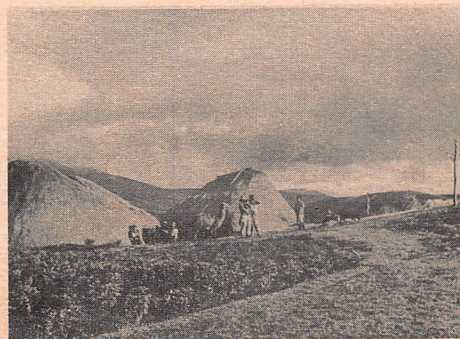
Quechua Indian and Child



Control 3 and World Radio Chapel



Partial View of HCJB Compound



Mountain Indian Home



Panoramic View - The Voice of the Andes