



OBSEQUIO
RAJICUFUSORAS H.C.J.B.
LA VOZ DE LOS ANDES
QUITO - ECUADOR

HECHA EN Balsa
GENUINE HANDWORKED

MADE IN ECUADOR

HERE IT IS!

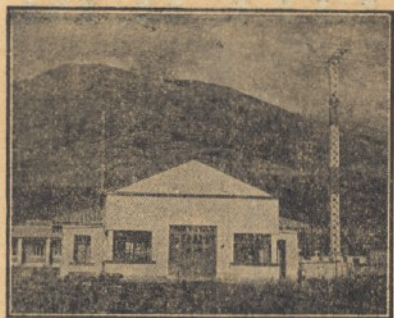
YOUR

**BALSA
WOOD**

Souvenir from
Radio Station HCJB
«The Voice of the Andes»

QUITO-ECUADOR

SOUTH AMERICA



Dear Listener

Thank you for writing and telling us how long you've listened to our programs. It is always an inspiration to our staff members, to receive your letters so write again! - and keep listening!

D. STUART CLARK

CLARENCE W. JONES

REUBEN E. LARSON

This sample of genuine

BALSA WOOD

is sent you with our best wishes, desiring that you should know a little better the country of Ecuador, where balsa grows wild.

Balsa is twice as light as cork - usable for lifepreservers because of its bouyancy.

Balsa is resilient, therefore usable for packing fine furniture.

Balsa insulates well, and is used in ice-boxes, airplanes, etc.

Boys like to make model airplanes from Balsa wood, too!

LISTEN TO HCJB

ENGLISH PROGRAMS

MORNING:

Daily 6:30-8:00 A. M. EST
Sunday - also 9:00-11:00 A. M

AFTERNOON:

5:00-6:00 P. M. EST

NIGHT:

9:00 P. M.-12:30 A. M. EST

TRY TUNING 3 WAVES

1. 24 mts. = 12.5 megs.
2. 30 mts. = 9.9 ,,
3. 19 mts. = 15.1 ,,

RADIO STATION HCJB - P. O. BOX 691
QUITO - ECUADOR

Edit. Colón - 30986