

PHILCO

Radio Atlas

OF THE WORLD

1934 • 1935

PRICE FIFTY CENTS

HJ4ABE — MEDELLIN
HJ5ABD — CALI
VUC — CALCUTTA
EAQ — MADRID
SD — DAVENTRY
VQ7LO — NAIROBI
VUNDBROOK
HVJ — VATICAN CITY
VK3ME — MELBOURNE
CNR — RABAT



CITY
GSE — DAVENTRY
DJC — Z
HC2RL — GUAYA
HBL — GENEVA
OTA
VE9GW — BOWMANVILLE
GS
RNE — MOSCOW
PRADO — RIOBAMBA
ALES
YV5BMO — MARACAIBO
W8X
W9XF — CHICAG
CP5 — LA PAZ
VK2ME — SYDNEY
FYA — PONTOISE
TGW — GUATAMALA CI
I2RO — ROME
DJA
CT1AA — LISBON
GSB

RAND McNALLY & COMPANY

PUBLISHERS

Comparative Time Between World Cities

Note: Light figures indicate a.m.; Dark figures, p.m. M, T, W, — Monday, Tuesday, Wednesday

TABLE of COMPARATIVE TIME

Example:—When it is 3 p.m. Monday in New York, what time is it in Melbourne, Australia—
Refer to alphabetical index below and find the column numbers for New York (10) and Melbourne (4). Follow the vertical column No. 10 down to Monday, 3 p.m. Then follow the horizontal line across to column No. 4 and find 6 a.m., Tuesday, the corresponding time in Melbourne.

1	2	3	4	5	6	7	8	9	10	11	12	13	14	15	16	17	18
Bangkok Saigon	Macao Manila Shanghai	Tokyo	Mel- bourne Sydney	Intern'l Date Line Wellington	Honolulu	Los Angeles San Francisco Seattle Vancouver	Denver	Bogota Chicago Mexico, D. F. Valparaiso Winnipeg	Boston New York Panama Wash., D. C.	Caracas	Buenos Aires	Rio de Janeiro	Gibraltar London Paris Rabat	Berlin Budapest Leopold- ville Roma*	Cairo Johan- nesburg Moskva*	Nairobi	Bombay
M 8.00	T 1.00	T 2.00	T 3.00	T 4.30	M 6.30	M 9.00	M 10.00	M 11.00	M Noon	M 12.30	M 1.00	M 2.00	M 5.00	M 6.00	M 7.00	M 8.00	M 10.30
T 1.00	T 2.00	T 3.00	T 4.00	T 5.30	M 7.30	M 10.00	M 11.00	M Noon	M 1.00	M 1.30	M 2.00	M 3.00	M 6.00	M 7.00	M 8.00	M 9.00	M 11.30
T 2.00	T 3.00	T 4.00	T 5.00	T 6.30	M 8.30	M 11.00	M Noon	M 1.00	M 2.00	M 2.30	M 3.00	M 4.00	M 7.00	M 8.00	M 9.00	M 10.00	T 12.30
T 3.00	T 4.00	T 5.00	T 6.00	T 7.30	M 9.30	M Noon	M 1.00	M 2.00	M 3.00	M 3.30	M 4.00	M 5.00	M 8.00	M 9.00	M 10.00	M 11.00	T 1.30
T 4.00	T 5.00	T 6.00	T 7.00	T 8.30	M 10.30	M 1.00	M 2.00	M 3.00	M 4.00	M 4.30	M 5.00	M 6.00	M 9.00	M 10.00	M 11.00	M Midn.	T 2.30
T 5.00	T 6.00	T 7.00	T 8.00	T 9.30	M 11.30	M 2.00	M 3.00	M 4.00	M 5.00	M 5.30	M 6.00	M 7.00	M 10.00	M 11.00	M Midn.	T 1.00	T 3.30
T 6.00	T 7.00	T 8.00	T 9.00	T 10.30	M 12.30	M 3.00	M 4.00	M 5.00	M 6.00	M 6.30	M 7.00	M 8.00	M 11.00	M Midn.	T 1.00	T 2.00	T 4.30
T 7.00	T 8.00	T 9.00	T 10.00	T 11.30	M 1.30	M 4.00	M 5.00	M 6.00	M 7.00	M 7.30	M 8.00	M 9.00	M Midn.	T 1.00	T 2.00	T 3.00	T 5.30
T 8.00	T 9.00	T 10.00	T 11.00	T 12.30	M 2.30	M 5.00	M 6.00	M 7.00	M 8.00	M 8.30	M 9.00	M 10.00	T 1.00	T 2.00	T 3.00	T 4.00	T 6.30
T 9.00	T 10.00	T 11.00	T Noon	T 1.30	M 3.30	M 6.00	M 7.00	M 8.00	M 9.00	M 9.30	M 10.00	M 11.00	T 2.00	T 3.00	T 4.00	T 5.00	T 7.30
T 10.00	T 11.00	T Noon	T 1.00	T 2.30	M 4.30	M 7.00	M 8.00	M 9.00	M 10.00	M 10.30	M 11.00	M Midn.	T 3.00	T 4.00	T 5.00	T 6.00	T 8.30
T 11.00	T Noon	T 1.00	T 2.00	T 3.30	M 5.30	M 8.00	M 9.00	M 10.00	M 11.00	M 11.30	M Midn.	T 1.00	T 4.00	T 5.00	T 6.00	T 7.00	T 9.30
T Noon	T 1.00	T 2.00	T 3.00	T 4.30	M 6.30	M 9.00	M 10.00	M 11.00	M Midn.	T 1.00	T 2.00	T 3.00	T 5.00	T 6.00	T 7.00	T 8.00	T 10.30
T 1.00	T 2.00	T 3.00	T 4.00	T 5.30	M 7.30	M 10.00	M 11.00	M Midn.	T 1.00	T 1.30	T 2.00	T 3.00	T 6.00	T 7.00	T 8.00	T 9.00	T 11.30
T 2.00	T 3.00	T 4.00	T 5.00	T 6.30	M 8.30	M 11.00	M Midn.	T 1.00	T 2.00	T 2.30	T 3.00	T 4.00	T 7.00	T 8.00	T 9.00	T 10.00	T 12.30
T 3.00	T 4.00	T 5.00	T 6.00	T 7.30	M 9.30	M Midn.	T 1.00	T 2.00	T 3.00	T 3.30	T 4.00	T 5.00	T 8.00	T 9.00	T 10.00	T 11.00	T 1.30
T 4.00	T 5.00	T 6.00	T 7.00	T 8.30	M 10.30	T 1.00	T 2.00	T 3.00	T 4.00	T 4.30	T 5.00	T 6.00	T 9.00	T 10.00	T 11.00	T Noon	T 2.30
T 5.00	T 6.00	T 7.00	T 8.00	T 9.30	M 11.30	T 2.00	T 3.00	T 4.00	T 5.00	T 5.30	T 6.00	T 7.00	T 10.00	T 11.00	T Noon	T 1.00	T 3.30
T 6.00	T 7.00	T 8.00	T 9.00	T 10.30	T 12.30	T 3.00	T 4.00	T 5.00	T 6.00	T 6.30	T 7.00	T 8.00	T 11.00	T Noon	T 1.00	T 2.00	T 4.30
T 7.00	T 8.00	T 9.00	T 10.00	T 11.30	T 1.30	T 4.00	T 5.00	T 6.00	T 7.00	T 7.30	T 8.00	T 9.00	T Noon	T 1.00	T 2.00	T 3.00	T 5.30
T 8.00	T 9.00	T 10.00	T 11.00	W 12.30	T 2.30	T 5.00	T 6.00	T 7.00	T 8.00	T 8.30	T 9.00	T 10.00	T 1.00	T 2.00	T 3.00	T 4.00	T 6.30
T 9.00	T 10.00	T 11.00	T Midn.	W 1.30	T 3.30	T 6.00	T 7.00	T 8.00	T 9.00	T 9.30	T 10.00	T 11.00	T 2.00	T 3.00	T 4.00	T 5.00	T 7.30
T 10.00	T 11.00	T Midn.	W 1.00	W 2.30	T 4.30	T 7.00	T 8.00	T 9.00	T 10.00	T 10.30	T 11.00	T Noon	T 3.00	T 4.00	T 5.00	T 6.00	T 8.30
T 11.00	T Midn.	W 1.00	W 2.00	W 3.30	T 5.30	T 8.00	T 9.00	T 10.00	T 11.00	T 11.30	T Noon	T 1.00	T 4.00	T 5.00	T 6.00	T 7.00	T 9.30
T Midn.	W 1.00	W 2.00	W 3.00	W 4.30	T 6.30	T 9.00	T 10.00	T 11.00	T Noon	T 12.30	T 1.00	T 2.00	T 5.00	T 6.00	T 7.00	T 8.00	T 10.30

ALPHABETICAL INDEX

Name	Time Column
Bangkok, Siam	1
Berlin, Germany	15
Bogota, Colombia	9
Bombay, India	18
Boston, U. S. A.	10
Budapest, Hung.	15
Buenos Aires, Argentina	12
Cairo, Egypt	16
Caracas, Venez.	11
Chicago, U. S. A.	9
Denver, U. S. A.	8
Gibraltar, Spain	14
Honolulu, Hawaii	6
Johannesburg, U. S. Afr.	16
Leopoldville, Bel. Congo	15
London, Great Britain	14
Los Angeles, U. S. A.	7
Macao, China	2
Manila, P. I.	2
Melbourne, Aust.	4
Mexico, D. F., Mex.	9
Moskva* (Moscow) Sov. Un.	16
Nairobi, Kenya	17
New York, U. S. A.	10
Panama, Panama	10
Paris, France	14
Rabat, Morocco	14
Rio de Janeiro, Brazil	13
Roma* (Rome), Italy	15
Saigon, Fr. Indo-China	1
San Francisco, U. S. A.	7
Seattle, U. S. A.	2
Shanghai, China	2
Sydney, Aust.	3
Tokyo, Japan	3
Valparaiso, Chile	9
Vancouver, Canada	7
Washington, D. C., U. S. A.	10
Wellington, N. Z.	5
Winnipeg, Canada	9

This RADIO ATLAS is presented to

by

The International Date Line

The "International Date Line" is based on the 180th meridian with necessary modifications for certain island groups. This line of date change is accepted by all nations of the world.

When it is Monday east of the "International Date Line", it is Tuesday to the westward. On crossing this line, westward, go forward one day on the calendar; eastward, go back one day. For instance if a vessel westbound from San Francisco to Yokohama takes ten days for the voyage, the calendar will show eleven days. The return trip eastward, taking the same time, will show only nine calendar days.

TABLE OF CONTENTS

	Page
World Radio Time-Table	} Inside Cover
Foreword to Foreign Broadcasting	
Short-Wave Stations of the World	1
Radio Map of the WORLD	2-3
North American Stations	4
Radio Map of NORTH AMERICA	5
Stars and Stories of South America	} 6
South American Stations	
Radio Map of SOUTH AMERICA	7
South American Radio Stars	8
PHILCO Radio Advertisement	9
Stars and Stories of Europe	} 10
European Stations	
Radio Map of EUROPE	11
Stars and Stories of Europe	12
European Radio Stars	13
Stars and Stories of Asia, Australia and South Pacific	} 14
Asiatic, Australian and South Pacific Stations	
Radio Map of ASIA	15
Radio Map of AFRICA	16
Stars and Stories of Africa	} Inside Back Cover
African Stations	

WITH a new PHILCO American and Foreign Broadcast Radio at your fingertips and this complete, accurate and carefully prepared Radio Atlas of the World as your guide, you are on the threshold of a fascinating new realm of entertainment. You are about to become an arm-chair traveler, faring forth into new and strange lands in search of exciting adventure.

How you'll thrill as the nations of the earth "pass in review" through your living room! What exciting reception you'll have as artists all over the world entertain you! Can you imagine any other form of entertainment that will give you such thrilling, exciting fun so easily and economically in the comfort of your home?

You'll be amazed at the perfection with which PHILCO brings all this to you. For PHILCO'S engineering genius gives you foreign reception that was impossible even for experts to get not long ago. Whether you listen to stations thousands of miles away or those right here at home, you capture the full beauty of every program.

Location and atmospheric conditions naturally make a difference in all-wave reception. But with a PHILCO all-wave aerial and a good installation by a PHILCO dealer, you can count on a PHILCO giving you all there is to give.

With this Atlas to help you, you're going to enjoy radio as never before. Your knowledge of the world and its peoples will be greatly enhanced. Through famous personages who will speak to you from abroad, you will become familiar with world affairs. You will hear the music of many countries. You will become a citizen of the world, a cosmopolite to whom all nations are neighbors.

Principal Short-Wave Stations of the World

To get the best possible results from short-wave reception, you must know when and where to tune. This Radio Atlas of the World was created expressly for this purpose. It gives you accurate and authentic information concerning the frequencies of the principal short-wave stations of the world and the hours they are on the air. Follow it carefully and you will enjoy tremendously more exciting reception than those who go at it blindly.

The numbers on the short-wave sections of the PHILCO dial indicate station frequencies in megacycles. Thus, the station frequencies listed below and on other pages in this Atlas represent very closely the actual dial settings at which these stations are received. After making sure the station you wish to hear is on the air at the time you are listening, set

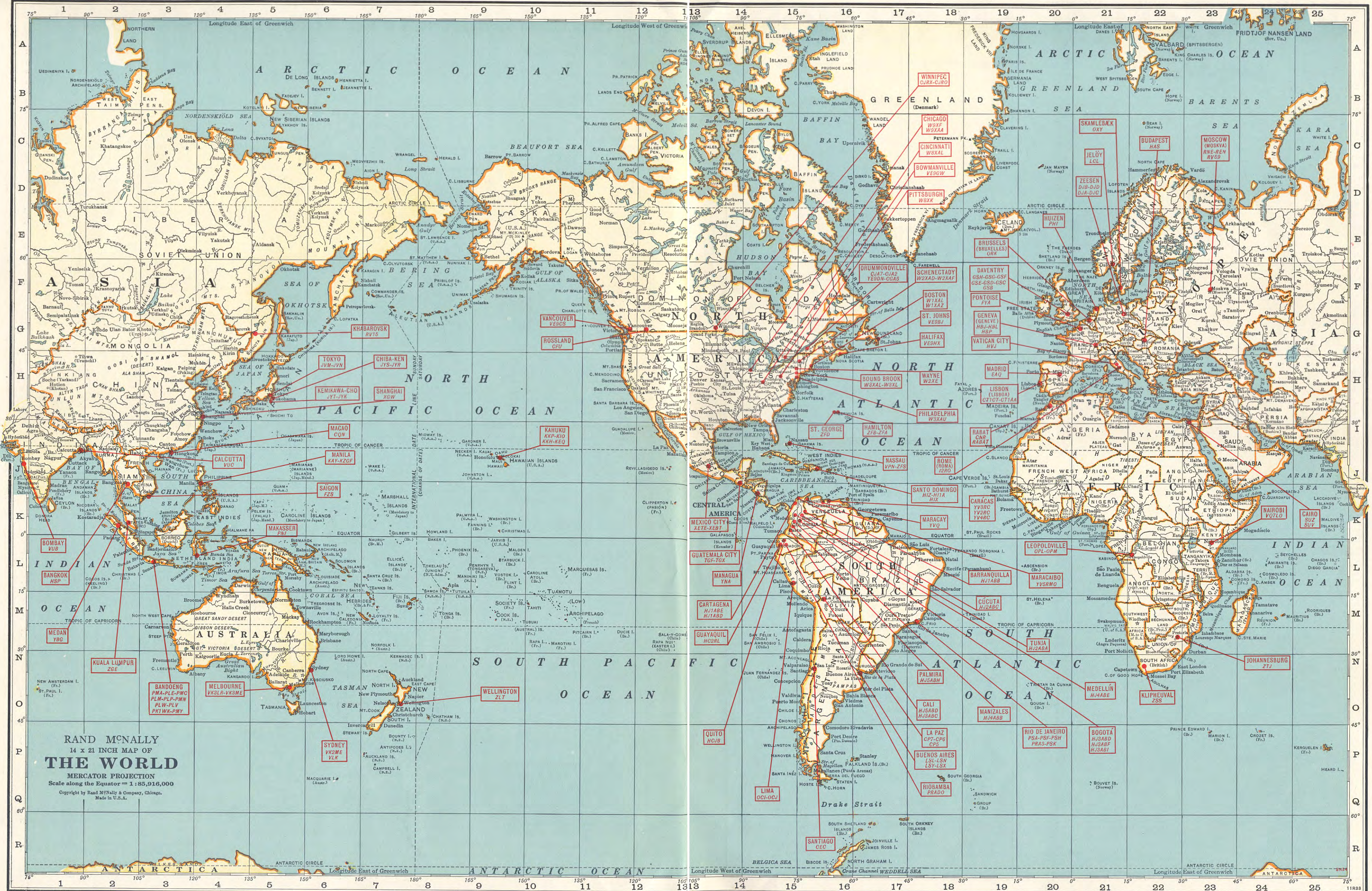
the wave-band switch of your PHILCO to the section of the dial in which its frequency will be found. Set the dial at the frequency shown in the station list. Then, with the volume turned up so that you hear a "rushing" sound, move the dial slowly back and forth until the station comes in. Do not expect a station to be heard every time it is on the air. There are many factors which govern short-wave reception such as skip distances, storms, your location, etc. But tune slowly and carefully. If your station is coming in at all, you'll hear it.

One more suggestion — whenever static is so strong as to prevent the fine reception you usually enjoy, turn the PHILCO tone control to "deep" or as far to the right as possible. This will cut out much of the noise without diminishing the volume of reception.

Mega-cycles	STATION	LOCATION	TIME (Eastern Standard)
21.54	W8XK	Pittsburgh Pa.	6 A.M. to 2 P.M.
21.47	GSH	Daventry, England	6 to 8:30 A.M. daily.
21.16	LSL	Buenos Aires, Argentina	8 A.M. to 1 P.M.
21.08	PSA	Rio de Janeiro, Brazil	Daytime.
21.03	LSN	Buenos Aires, Argentina	8 A.M. to 4 P.M.
20.04	OPL	Leopoldville, Belgian Congo	Mornings.
19.69	CEC	Santiago, Chile	11 A.M. and 4 P.M.
19.35	PMA	Bandoeng, Java	Mornings.
18.96	ZSS	Klipkeuval, Africa	6:30 to 7 and 10 to 10:45 A.M.
18.83	PLE	Bandoeng, Java	6 to 11 A.M.
18.68	OCI	Lima, Peru	Near 2 P.M.
18.35	FZS	Saigon, Indo-China	5 A.M. Irregular.
18.18	PMC	Bandoeng, Java	3 to 9:20 A.M.
18.12	LSY	Buenos Aires, Argentina	Irregular.
17.79	GSG	Daventry, England	6 to 10:45 A.M.
17.78	W3XAL	Bound Brook, N. J.	9 A.M. to 3 P.M.
17.77	PHI	Huizen, Netherlands (Holland)	Mon., Thur., Fri. 7:30 to 9:30 A.M.; Sat. and Sun. 7:30 to 11 A.M.
17.75	HSP	Bangkok, Siam	4:30 to 6:30 A.M.
16.04	KKP	Kahuku, Hawaii	1 to 7 P.M.
15.86	CEC	Santiago, Chile	11 A.M. to 1 P.M.
15.81	LSL	Buenos Aires, Argentina	8 A.M. to 2 P.M.
15.76	JYT	Kemikawa-Cho, Japan	6 to 7 P.M.
15.62	OCJ	Lima, Peru	Daytime.
15.35	PRADO	Riobamba, Ecuador	Sun., 4 to 6 P.M.
15.34	W2XAD	Schenectady, N. Y.	2 to 3 P.M. daily.
15.29	CP7	La Paz, Bolivia	10 A.M. to 5 P.M. Irregular.
15.27	W2XE	Wayne, N. J.	10 A.M. to Noon.
15.25	FYA	Pontoise, France	7 A.M. to 10 A.M.
15.21	W8XK	Pittsburgh, Pa.	10 A.M. to 4 P.M.
15.20	DJB	Zeeseen, Germany	12:30 to 2:30 A.M.; 4 to 5:30 A.M. and 8:00 to 11 A.M.
15.13	GSE	Daventry, England	8:45 A.M. to 12:45 P.M. and 1 to 5:30 P.M.
15.11	HVJ	Vatican City, Italy	Daily 5 to 5:15 A.M., Sat. 10 to 10:30 A.M.
14.98	KAY	Manila, P. I.	5 to 7 A.M. and 7 to 8 P.M.
14.69	PSF	Rio de Janeiro, Brazil	7 A.M. to 6 P.M.
14.56	HBJ	Geneva, Switzerland	Near 6 A.M.
14.53	LSN	Buenos Aires, Argentina	Daytime.
14.50	YNA	Managua, Nicaragua	Daytime.
14.48	TGF	Guatemala City	Daytime. Irregular.
13.83	SUZ	Cairo, Egypt	7 A.M. to 3:30 P.M.
13.60	JYK	Kemikawa-Cho, Japan	6 P.M.
13.35	YVQ	Maracay, Venezuela	Daytime.
13.28	CJA7	Drummondville, Quebec	Daytime.
12.83	CNR	Rabat, Morocco	5 to 8 A.M.
12.83	RABAT	Morocco, Africa	Sun. 7:30 to 9 A.M.
12.73	CTICT	Lisbon, Portugal	Sun. 7 to 9 A.M., Thurs. 4 to 6 P.M.
12.30	PLM	Bandoeng, Java	Near 6:30 A.M.
12.00	RNE	Moscow, Soviet Union	Sat. 10 to 11 P.M., Sun. 6 to 7 and 10 to 11 A.M.
11.99	FZS	Saigon, Indo-China	Mornings.
11.90	FYA	Pontoise, France	10:15 A.M. to 1:15 P.M. and 2 to 5 P.M.
11.87	W8XK	Pittsburgh, Pa.	4:30 to 10 P.M.
11.86	GSE	Daventry, England	8:45 A.M. to 12:45 P.M.
11.84	CJRX	Winnipeg, Manitoba	8 to 11 P.M. and 11:30 to Mid.
11.83	W2XE	Wayne, N. J.	2 to 4 P.M.
11.81	I2RO	Rome, Italy	11:30 A.M. to 12:30 P.M. and 1:15 to 6 P.M.
11.78	W1XAL	Boston, Mass.	5 to 6:15 P.M.
11.76	DJD	Zeeseen, Germany	12:30 to 4; 5 to 10:30 P.M.
11.75	GSD	Daventry, England	12:15 to 2:15 A.M., 6 to 8 P.M.
11.73	PHI	Huizen, Netherlands (Holland)	At 17.77 Megs. for Summer.
11.71	KIO	Kahuku, Hawaii	Evenings.
11.71	FYA	Pontoise, France	2 to 11 P.M.
11.00	PLP	Bandoeng, Java	5 to 7 A.M.
10.99	ZLT	Wellington, New Zealand	5 to 7 A.M. Irregular.
10.97	OCI	Lima, Peru	Evenings.
10.74	JVM	Tokyo, Japan	4 to 7 A.M., and 7 to 11 P.M.
10.67	CEC	Santiago, Chile	Irregular. Evenings.
10.66	JVN	Tokyo, Japan	3 to 8 A.M.
10.52	VK2ME	Sydney, Australia	1 to 8 A.M.
10.42	XGW	Shanghai, China	Near 6 A.M.
10.40	YBG	Medan, Sumatra	12:30 to 1:30 and 5:30 to 6:30 A.M., 7:30 to 8:30 P.M.
10.35	LSX	Buenos Aires, Argentina	Mon., Tues., Wed. Near 9 P.M.
10.33	ZFD	St. Georges, Bermuda	Afternoons. Irregular.
10.33	ORK	Brussels, Belgium	1:45 to 3:15 P.M. Irregular.
10.26	PMN	Bandoeng, Java	Near 5:30 A.M. daily.
10.22	PSH	Rio de Janeiro, Brazil	Evenings.
10.14	OPM	Leopoldville, Belgian Congo	9 to 11 A.M., 3 to 6 P.M.
10.05	ZFB	Hamilton, Bermuda	Daytime.
10.05	SUV	Cairo, Egypt	After 3:30 P.M.
9.90	LSN	Buenos Aires, Argentina	6 P.M. to 6 A.M.
9.87	EAQ	Madrid, Spain	Daily 5:15 to 7 P.M., Sat. Noon to 2 P.M., (PHILCO Program—Sunday 7 P.M.)
9.84	JYS	Chiba-Ken, Japan	4 to 8 A.M. Irregular.
9.76	VK2ME	Sydney, Australia	4 A.M. to 8 A.M.
9.60	CT1AA	Lisbon, Portugal	Tues. and Fri. 3:30 to 6 P.M.
9.60	XETE	Mexico City	6:30 P.M. to 2 A.M. Irregular.
9.59	HBL	Geneva, Switzerland	5:30 to 6:15 P.M.
9.59	VK2ME	Sydney, Australia	Sun. 12 to 2; 4:30 to 8:30 A.M. and 11:30 A.M. to 1:30 P.M.
9.59	W3XAU	Philadelphia, Pa.	11 A.M. to 6:50 P.M.
9.58	GSC	Daventry, England	6 to 8 P.M. daily.
9.58	VK3LR	Melbourne, Australia	3 to 8 A.M. except Sunday.
9.57	W1XAZ	Boston, Mass.	6 A.M. to Midnight.

Mega-cycles	STATION	LOCATION	TIME (Eastern Standard)
9.57	VUB	Bombay, India	11 A.M. to 12:30 P.M., Wed and Sat.
9.57	DJA	Zeeseen, Germany	4 to 5:30; 8 to 10 A.M. and 5 to 8:15 P.M.
9.55	LCL	Jeloy, Norway	11 A.M. to 6:30 P.M. Irregular.
9.53	W2XAF	Schenectady, N. Y.	6:40 to 10 P.M. daily.
9.51	VK3ME	Melbourne, Australia	Wed. 5 to 6:30 A.M. Sat. 5 to 7 A.M.
9.51	GSB	Daventry, England	12:15 to 2:15 A.M. and 1 P.M. to 5:30 P.M.
9.48	PLW	Bandoeng, Java	3 to 8 A.M. Irregular.
9.42	PLV	Bandoeng, Java	7:40 to 9:40 A.M.
9.37	HJ5ABH	Palmira, Colombia	11 to 12 A.M. and 7:30 to 9:30 P.M.
9.33	CJA2	Drummondville, Quebec	Irregular.
9.12	CP6	La Paz, Bolivia	7:30 to 10:30 P.M. Irregular.
8.77	PNI	Makasser, Dutch E. I.	4 to 5 A.M.
8.21	HCJB	Quito, Ecuador	7:30 to 9:45 P.M. Except Mon.
8.19	PRA3	Rio de Janeiro, Brazil	5:30 to 6:30 P.M.
8.19	PSK	Rio de Janeiro, Brazil	6 to 7:30 P.M.
8.05	CNR	Rabat, Morocco	Sun. 2:30 to 5 P.M.
7.88	JYR	Chiba-Ken, Japan	4:50 to 7:50 A.M.
7.80	HBP	Geneva, Switzerland	5:30 to 6:15 P.M.
7.52	KKH	Kahuku, Hawaii	Evenings.
7.40	HJ3ABD	Bogota, Colombia	7:30 to 11 P.M.
7.37	KEQ	Kahuku, Hawaii	Evenings.
7.23		Medan, Sumatra	7 to 10 A.M.
7.14	HJ4ABB	Manizales, Colombia	Evenings.
7.00	HJ1ABE	Cartagena, Colombia	Mon. 10 P.M., Wed. 8 P.M.
6.84	HAS	Budapest, Hungary	3 to 5:30 P.M. Irregular.
6.67	YVQ	Maracay, Venezuela	Near 10 P.M. Irregular.
6.67	HC2RL	Guayaquil, Ecuador	Sun. 5:45 to 8 P.M., Tues. 9:15 to 11:45 P.M.
6.62	PRADO	Riobamba, Ecuador	Thursdays 9 to 11:30 P.M.
6.61	TGF	Guatemala City	Evenings. Irregular.
6.61	REN	Moscow, Sov. Union	1 to 6 P.M.
6.48	HJ5ABD	Cali, Colombia	7 to 10 P.M.
6.45	HJ1ABB	Barraquilla, Colombia	11:45 A.M. to 12:45 P.M., 7 to 9:30 P.M.
6.43	W3XL	Bound Brook, N. J.	Irregular.
6.32	HIZ	Santo Domingo, D. R.	Daily 4:40 to 5:40 P.M., Sat. 11 to 12:40 P.M.
6.25	HJ3ABF	Bogota, Colombia	7 to 11 P.M.
6.23	H11A	Dominican Republic	12:10 to 1:40 and 7:40 to 9:40 P.M. daily. Sun. 1:40 to 4:40 P.M. and 7:40 to 9:40 P.M.
6.15	YV3RC	Caracas, Venezuela	4:30 to 9:30 P.M.
6.15	CJRO	Winnipeg, Manitoba	8 to 11 P.M., 11:30 to Midnight.
6.14	W8XK	Pittsburgh, Pa.	4:30 P.M. to about 2 A.M.
6.13	ZGE	Kuala Lumpur, Malay States	Sun., Tues., Fri. 6:40 to 8:40 A.M.
6.13	LCL	Jeloy, Norway	11 A.M. to 6 P.M. Irregular.
6.12		Johannesburg, Africa	4 to 6 A.M., 8 to 10:30 A.M., 11 A.M. to 3:40 P.M.
6.12	PK1WK	Bandoeng, Java	5 to 6:30 A.M.
6.12	W2XE	Wayne, N. J.	5 to 10 P.M.
6.11	YV2RC	Caracas, Venezuela	5:15 to 10 P.M.
6.11	VE9HX	Halifax, N. S.	8:30 to 11:30 A.M., 5 to 10 P.M.
6.11	VUC	Calcutta, India	9:30 A.M. to Noon.
6.10	W3XAL	Bound Brook, N. J.	Mon., Wed., Sat., 4 P.M. to Mid.
6.10	W9XF	Chicago, Ill.	3:30 to 7 P.M., 8:30 P.M. to 1 A.M.
6.10	HJ1ABD	Cartagena, Colombia	11 A.M. to Noon., 7 to 9 P.M.
6.09	VE9GW	Bowmanville, Ont.	Thur., Fri. and Sat. 7 A.M. to 4 P.M., Sun. 10 A.M. to 7 P.M.
6.09	VE9BJ	St. Johns, N. B.	Near 5 and 11 P.M.
6.08	W9XAA	Chicago, Ill.	Mon., Wed., Sat. 3 to 11 P.M.
6.08	CP5	La Paz, Bolivia	7:30 to 10:30 P.M. Irregular.
6.07	YV5RMO	Maracaibo, Venezuela	5:15 to 9 P.M.
6.07	OXY	Skamlebaek, Denmark	2 to 6:30 P.M. Irregular.
6.07	VE9CS	Vancouver, B. C.	Fri. 12:30 to 1:45 A.M., Sun. Noon to Midnight.
6.06	HIX	Santo Domingo, D. R.	Tues. and Fri. 8 to 10 P.M., Sun. 8 to 10 A.M. and 2:30 to 4:30 P.M.
6.06	W3XAU	Philadelphia, Pa.	7 to 10 P.M.
6.06	W8XAL	Cincinnati, Ohio	6:30 A.M. to 7 P.M., 10 P.M. to 2 A.M.
6.06	VQ7LO	Nairobi, Kenya Colony	11 A.M. to 2 P.M.
6.05	HJ3ABI	Bogota, Colombia	8 to 10 P.M.
6.04	W1XAL	Boston, Mass.	6 to 7 P.M.
6.02	CQN	Macao, China	Mon. and Fri. 7 to 9 A.M.
6.02	XEBT	Mexico City	6 P.M. to 2 A.M. Irregular.
6.02	DJC	Zeeseen, Germany	12:15 to 4 P.M., 8:45 to 10:30 P.M.
6.01	VE9DN	Drummondville, Quebec	Sat. after 10:30 P.M.
6.00	RV59	Moscow, Soviet Union	2 to 6 P.M.
5.99	YV4RC	Caracas, Venezuela	4:30 to 10:30 P.M.
5.97	HJ2ABC	Cucuta, Colombia	11 A.M. to Noon, 6 to 9 P.M.
5.97	HVJ	Vatican City, Italy	2 to 2:15 P.M., Sun. 5 to 5:30 A.M.
5.95	HJ4ABE	Medellin, Colombia	Mon. 7 to 11 P.M., Tues., Thurs., and Sat. 6:15 to 8 P.M., Wed. and Fri. 7:30 to 10:30 P.M.
5.95	TGX	Guatemala City	Sun. 2 to 5 A.M. Also near Midnight.
5.88	HJ2ABA	Tunja, Colombia	1 to 2 and 7:30 to 10 P.M.
5.80	KZGF	Manila, P. I.	5 to 8 A.M.
5.66	CFU	Rossland, Br. Col.	Near 10 P.M.
5.60	HJ5ABC	Cali, Colombia	8 to 10 P.M.
5.15	PMY	Bandoeng, Java	Near 11 A.M.
5.02	ZFA	Hamilton, Bermuda	Evenings.
4.90	CGA5	Drummondville, Quebec	Evenings.
4.51	VPN-ZFS	Nassau, Bahamas	2 to 10 P.M.
4.25	RV15	Khabarovsk, Soviet Union	1 to 9 A.M.
4.00	HCJB	Quito, Ecuador	7:30 to 9:45 P.M. except Monday.

The above information was furnished through the courtesy of the International Short-Wave Radio Club, East Liverpool, Ohio — an organization with members throughout the world. For the PHILCO owner who wishes additional information regarding short-wave reception, including changes in stations and time as they occur, a subscription to the "International Short-Wave Radio" magazine, published monthly by this club, will prove very interesting and helpful.



RAND McNALLY
14 x 21 INCH MAP OF
THE WORLD
MERCATOR PROJECTION
Scale along the Equator = 1:85,916,000
Copyright by Rand McNally & Company, Chicago.
Made in U.S.A.

NORTH AMERICAN STATIONS

Long-Wave

Stations in the chart below are grouped in exact dial-number order. Each group is map-like. Power is shown by letters F to W, see code above. Networks: * Columbia, † National WEAF, ‡ National WJZ, § National WEAJ or WJZ. For dials numbered 540 to 1500 or 54 to 150, there may be slight variations so record the exact number from your dial in the blank center column. For dials numbered 100 to 0, or otherwise, refer to alphabetical list, if necessary, record YOUR number opposite kilocycle number in chart below and you not only translate that technical term, but after a few, are able to find desired programs listed in newspapers. You'll note your numbers appear in exact order and stations between can be identified without station announcements. Nothing could be more simple.

Revision 44 Copyright, 1934—by Haynes' Radio Log, 161 West Harrison St., Chicago, Illinois FALL, 1934

POWER	50	75	100	150	200	250	300	500	750	1000	1500	2000	2500	5000	10000	25000	50000	
CODE	F	G	H	I	J	K	L	M	N	O	P	Q	R	S	T	U	V	W
WESTERN	Wash., Ore., Cal., Utah, etc.	Wash., Ore., Cal., Utah, etc.	Wash., Ore., Cal., Utah, etc.	Wash., Ore., Cal., Utah, etc.	Wash., Ore., Cal., Utah, etc.	Wash., Ore., Cal., Utah, etc.	Wash., Ore., Cal., Utah, etc.	Wash., Ore., Cal., Utah, etc.	Wash., Ore., Cal., Utah, etc.	Wash., Ore., Cal., Utah, etc.	Wash., Ore., Cal., Utah, etc.	Wash., Ore., Cal., Utah, etc.	Wash., Ore., Cal., Utah, etc.	Wash., Ore., Cal., Utah, etc.	Wash., Ore., Cal., Utah, etc.	Wash., Ore., Cal., Utah, etc.	Wash., Ore., Cal., Utah, etc.	
MIDDLE WESTERN	Ill., Ind., Pa., N. Y., etc.	Ill., Ind., Pa., N. Y., etc.	Ill., Ind., Pa., N. Y., etc.	Ill., Ind., Pa., N. Y., etc.	Ill., Ind., Pa., N. Y., etc.	Ill., Ind., Pa., N. Y., etc.	Ill., Ind., Pa., N. Y., etc.	Ill., Ind., Pa., N. Y., etc.	Ill., Ind., Pa., N. Y., etc.	Ill., Ind., Pa., N. Y., etc.	Ill., Ind., Pa., N. Y., etc.	Ill., Ind., Pa., N. Y., etc.	Ill., Ind., Pa., N. Y., etc.	Ill., Ind., Pa., N. Y., etc.	Ill., Ind., Pa., N. Y., etc.	Ill., Ind., Pa., N. Y., etc.	Ill., Ind., Pa., N. Y., etc.	
CENTRAL	Ill., Mich., Ohio, Tenn., etc.	Ill., Mich., Ohio, Tenn., etc.	Ill., Mich., Ohio, Tenn., etc.	Ill., Mich., Ohio, Tenn., etc.	Ill., Mich., Ohio, Tenn., etc.	Ill., Mich., Ohio, Tenn., etc.	Ill., Mich., Ohio, Tenn., etc.	Ill., Mich., Ohio, Tenn., etc.	Ill., Mich., Ohio, Tenn., etc.	Ill., Mich., Ohio, Tenn., etc.	Ill., Mich., Ohio, Tenn., etc.	Ill., Mich., Ohio, Tenn., etc.	Ill., Mich., Ohio, Tenn., etc.	Ill., Mich., Ohio, Tenn., etc.	Ill., Mich., Ohio, Tenn., etc.	Ill., Mich., Ohio, Tenn., etc.	Ill., Mich., Ohio, Tenn., etc.	
EASTERN	Mass., N. Y., Pa., N. C., etc.	Mass., N. Y., Pa., N. C., etc.	Mass., N. Y., Pa., N. C., etc.	Mass., N. Y., Pa., N. C., etc.	Mass., N. Y., Pa., N. C., etc.	Mass., N. Y., Pa., N. C., etc.	Mass., N. Y., Pa., N. C., etc.	Mass., N. Y., Pa., N. C., etc.	Mass., N. Y., Pa., N. C., etc.	Mass., N. Y., Pa., N. C., etc.	Mass., N. Y., Pa., N. C., etc.	Mass., N. Y., Pa., N. C., etc.	Mass., N. Y., Pa., N. C., etc.	Mass., N. Y., Pa., N. C., etc.	Mass., N. Y., Pa., N. C., etc.	Mass., N. Y., Pa., N. C., etc.	Mass., N. Y., Pa., N. C., etc.	

Short-Wave

Location	Megacycles	Time (Eastern Standard)
BAHAMAS		
VPN-ZFS Nassau	4.51	2 to 10 P.M.
BERMUDA		
ZFD St. George	10.33	Afternoons
ZFB Hamilton	10.05	Daytime
ZFA Hamilton	5.02	Evenings
CANADA		
CJA7 Drummondville, Que.	13.28	Daytime
CJRX Winnipeg, Man.	11.84	Evenings
CJA2 Drummondville, Que.	9.33	Irregular
CJRO Winnipeg, Man.	6.15	8 to 11 P.M.; 11:30 to 12 P.M.
VE9HX Halifax, Nova Scotia	6.11	8:30 to 11:30 A.M.; 5 to 10 P.M.
VE9GW Bowmanville, Ont.	6.09	7 A.M. to 4 P.M., Thurs., Fri., Sat.
VE9BJ St. Johns, N. B.	6.09	Evenings
VE9CS Vancouver, B. C.	6.07	Noon to Midnight Sun.; Fri. 12:30 to 1:45 A.M.
VE9DN Drummondville, Que.	6.01	Sat. after 10:30 P.M.
CFU Rossland, B. C.	5.66	10 P.M. Irreg.
CGA5 Drummondville, Que.	4.90	Evenings
DOMINICAN REPUBLIC		
HIZ Santo Domingo	6.32	Daily 4:40 to 5:40 P.M.
HIIA Santo Domingo	6.23	Afternoons and evenings
HIX Santo Domingo	6.06	Evenings
GUATEMALA		
TGF Guatemala City	14.48	Daytime. Irreg.
TGF Guatemala City	6.61	Evenings. Irreg.
TGX Guatemala City	5.95	Sundays 2 to 5 P.M.
MEXICO		
XETE Mexico City	9.60	Evenings. Irreg.
XEBT Mexico City	6.02	Evenings. Irreg.
NICARAGUA		
YNA Managua	14.50	Daytime
UNITED STATES		
W8XK Pittsburgh, Pa.	21.54	6 A.M. to 2 P.M.
W3XAL Bound Brook, N. J.	17.78	9 A.M. to 3 P.M.
W2XAD Schenectady, N. Y.	15.34	2 to 3 P.M.
W2XE Wayne, N. J.	15.27	10 A.M. to Noon
W8XK Pittsburgh, Pa.	15.21	10 A.M. to 4 P.M.
W8XK Pittsburgh, Pa.	11.87	4:30 P.M. to 10 P.M.
W2XE Wayne, N. J.	11.83	2 to 4 P.M.
W1XAL Boston, Mass.	11.78	5 to 6:15 P.M.
W3XAU Philadelphia, Pa.	9.59	11 A.M. to 6:50 P.M.
W1XAZ Boston, Mass.	9.57	6 A.M. to Midnight
W2XAF Schenectady, N. Y.	9.53	6:40 to 10 P.M.
W3XL Bound Brook, N. J.	6.43	Irregular
W8XK Pittsburgh, Pa.	6.14	4:30 P.M. to 2 A.M.
W2XE Wayne, N. J.	6.12	5 to 10 P.M.
W3XAL Bound Brook, N. J.	6.10	4 P.M. to Midnight, Mon., Wed., Sat.
W9XF Chicago, Ill.	6.10	3:30 to 7 P.M.; 8:30 P.M. to 1 A.M.
W9XAA Chicago, Ill.	6.08	3 to 11 P.M.—Mon., Wed., Sat.
W8XAL Cincinnati, Ohio	6.06	6:30 A.M. to 7 P.M.; 10 P.M. to 2 A.M.
W3XAU Philadelphia, Pa.	6.06	7 to 10 P.M.
W1XAL Boston, Mass.	6.04	6 to 7 P.M.



Revel In South America's Tantalizing Music

Listen to pulse-stirring rhumbas, fascinating paso dobles, and delightful tangos

VENEZUELA

Here is one of the South American republics that you will be able to count upon for delightful entertainment. From Caracas, Maracaibo and Maracay, you'll hear entertainment that is



MARGOT ANTILLANO

Miss Antillano is the youngest radio artist heard over YV2RC at Caracas, Venezuela. Her soft, pleasing voice and her great acting ability have made her a tremendous favorite among listeners both in her own country and here in America. She appears regularly in radio mystery serials which feature the broadcasts from this South American station.

with splendid foreign entertainment throughout the evening.

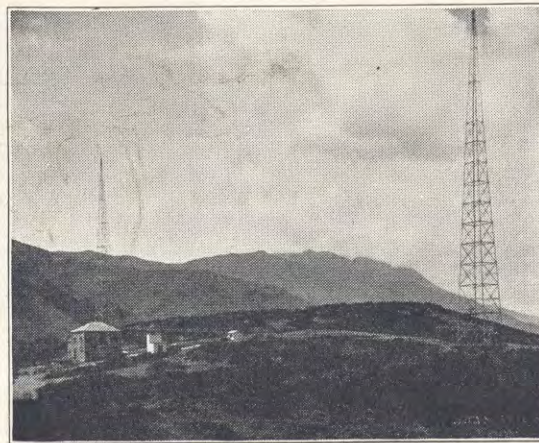
COLOMBIA

In this South American republic, situated right at the end of the Isthmus of Panama, are located more short-wave broadcasting stations heard in the United States than are located in any other Latin-American country. From Barranquilla, Bogota, Palmira, Manizales, Cartagena, Cali, Cucuta and Medellin will be heard the kind of entertainment that makes your blood tingle. For in Colombia, you are right in the heart of South American music. You'll hear fascinating

rhumbas, paso dobles and tangos in addition to strange, weird mountain songs such as you've never listened to before. You're going to like the Colombian stations, we know.

ARGENTINA

There's a real thrill in hearing Buenos Aires, for you must remember that this beautiful city on the Plata River is nearly 6,000 miles from central United States. Listeners have found special interest in Buenos Aires, for here is located station LSX through which the weekly programs from Little America are relayed to New York for rebroadcasting on the national network. What excitement you will have listening to the voices of the explorers of the Byrd Expedition and the operators at LSX talking to one another during the preliminary tests before each weekly program. LSX tests with Little America Mondays, Tuesdays and Wednesdays around 9 o'clock, Eastern Standard Time.



YV2RC, CARACAS

Located atop a mountain, about 5 miles away from the city proper, Station YV2RC looks down on Caracas from an elevation of almost 4,000 feet. From here, on clear days, the intense blue of the Caribbean can be plainly seen—a beautiful sight. Short-wave listeners from many continents enjoy the splendid broadcasts from this modern Venezuelan station.

ECUADOR

This little republic takes its broadcasting seriously. For instance, the determined aim of station HC2RL at Guayaquil is "The Diffusion of Ecuadorian Culture." That's why you hear rhythmic native music as well as programs of universal appeal. Ecuador lies right on the equator. However, many listeners in the United States hear its programs regularly.



PAQUITA PARRA

Senorita Parra is one of the reasons why HC2RL, at Guayaquil, Ecuador, is a favorite among many listeners here in America. Her soft lyric soprano voice and her splendid interpretation of native Ecuadorian songs have added greatly to HC2RL's popularity among listeners throughout the Americas.

BRAZIL

Rio de Janeiro, from which comes the greater part of the short-wave listener's Brazilian entertainment, is the largest Portuguese-speaking city in the world, having a population of about one and a half millions. Also, it has what has been called by many a world traveler the most beautiful harbor in the world. From station PSK, through which the Radio Club of Brazil broadcasts, you will hear stirring Brazilian marches, as well as delightful tangos.

OTHER COUNTRIES

Although you will not hear them as often, other South American countries broadcast frequently over short-wave. Bolivia's station CP5 at La Paz, Peru's station OCJ at Lima, its capital, and Chile's station CEC at Santiago provide programs that delight.

PRINCIPAL SOUTH AMERICAN SHORT-WAVE STATIONS

Location	Frequency	Time (Eastern Standard)
ARGENTINA		
LSL.....Buenos Aires	21.16	8 A.M. to 1 P.M.
LSN.....Buenos Aires	21.03	8 A.M. to 4 P.M.
LSY.....Buenos Aires	18.12	Irregular.
LSL.....Buenos Aires	15.81	8 A.M. to 2 P.M.
LSN.....Buenos Aires	14.53	Daytime.
LSX.....Buenos Aires	10.35	Tests Mon., Tues. and Wed. 9 P.M.
LSN.....Buenos Aires	9.90	6 P.M. to 6 A.M.
BOLIVIA		
CP7.....La Paz	15.29	10 A.M. to 5 P.M. Irreg.
CP6.....La Paz	9.12	7:30 to 10:30 P.M. Irreg.
CP5.....La Paz	6.08	7:30 to 10:30 P.M. Irreg.
BRAZIL		
PSA.....Rio de Janeiro	21.16	8 A.M. to 1 P.M.
PSF.....Rio de Janeiro	14.69	7 A.M. to 6 P.M.
PSH.....Rio de Janeiro	10.22	Evenings.
PRA3.....Rio de Janeiro	8.19	5:30 to 6:30 P.M.
PSK.....Rio de Janeiro	8.19	6 to 7:30 P.M.
CHILE		
CEC.....Santiago	19.69	11 A.M. and 4 P.M.
CEC.....Santiago	15.86	11 A.M. to 1 P.M.
CEC.....Santiago	10.67	Irregular. Evenings.
COLOMBIA		
HJ5ABH.....Palmira	9.37	11-12 A.M., 7:30-9:30 P.M.
HJ3ABD.....Bogota	7.40	7:30 to 11 P.M.
HJ4ABB.....Manizales	7.20	Evenings.
HJ1ABE.....Cartagena	7.00	Mon. 10 P.M., Wed. 8 P.M.
HJ5ABD.....Cali	6.48	7 to 10 P.M.
HJ1ABB.....Barranquilla	6.45	11:45 A.M. to 12:45 P.M., 7 to 9:30 P.M.

Location	Frequency	Time (Eastern Standard)
COLOMBIA		
HJ3ABF.....Bogota	6.25	7 to 11 P.M.
HJ1ABD.....Cartagena	6.10	11 A.M. to Noon, 7 to 9 P.M.
HJ3ABI.....Bogota	6.05	8 to 10 P.M.
HJ2ABC.....Cucuta	5.97	11 A.M. to Noon, 6 to 9 P.M.
HJ4ABE.....Medellin	5.95	Mon. 7-11 P.M., Tues., Thurs., Sat. 6:15-8 P.M., Wed., Fri. 7:30-10:30 P.M.
HJ2ABA.....Tunja	5.88	1 to 2 P.M., 7:30 to 10 P.M.
HJ3ABC.....Cali	5.60	8 to 10 P.M.
ECUADOR		
PRADO.....Riobamba	15.35	Sun. 4 to 6 P.M.
HCJB.....Quito	8.21	7:30 to 9:45 P.M. ex. Mon.
HC2RL.....Guayaquil	6.67	Sun. 5:45 to 8 P.M., Tues. 9:15 to 11:45 P.M.
PRADO.....Riobamba	6.62	Thurs. 9 to 11:30 P.M.
HCJB.....Quito	4.00	7:30 to 9:45 P.M. ex. Mon.
PERU		
OCI.....Lima	18.68	Near 2 P.M.
OCJ.....Lima	15.62	Daytime.
OCI.....Lima	10.97	Evenings.
VENEZUELA		
YVQ.....Maracay	13.35	Daytime.
YVQ.....Maracay	6.67	Near 10 P.M. Irreg.
YV3RC.....Caracas	6.15	4:30 to 9:30 P.M.
YV2RC.....Caracas	6.11	5:15 to 10 P.M.
YV5RMO.....Maracaibo	6.07	5:15 to 9 P.M.
YV4RC.....Caracas	5.99	4:30 to 10:30 P.M.



RAND McNALLY
POPULAR MAP OF
SOUTH AMERICA

SCALE 1:25,724,000
1 Inch = 406 Statute Miles
1 Centimeter = 257 Kilometers



Copyright by Rand McNally & Company, Chicago.
Made in U.S.A.

Popular South American Radio Stars You'll Enjoy Hearing

Music and song that delight American listeners



ANITA JURADO AND EDGAR J. ANZOLA

Miss Jurado, Argentine singer and star of YV2RC at Caracas, Venezuela, is caught in a distinctly informal pose as she talks it over with Mr. Anzola, announcer of YV2RC. Mr. Anzola is probably the best known of all the announcers of the South American short-wave stations. Thousands of American listeners look upon him as a friend because of his frequent announcements in English.

The South Americans are a music-loving people. They are born with a perfect sense of rhythm and an instinctive urge to sing, dance and play. That's why you'll enjoy to the full the entertainment these artists bring you through the South American short-wave stations. Turn to South America and you'll hear programs that will thrill you with their delightful charm and color.



CONCHITA ASCANIO

More than one masculine heart has skipped a beat or two as this talented young singer of love songs performed from YV2RC at Caracas, Venezuela. Miss Ascanio is one of the most popular and charming artists heard from this South American station. Her singing is emotional and altogether beautiful. She has had an extensive stage career. She is young, beautiful and single. What more could one ask?



LAURO, SERRANO AND AYESTA

Much of the fascinating music you hear from short-wave station YV2RC at Caracas, Venezuela, comes from the skillful fingers and splendid voices of these three talented young men. You've never really heard a rumba or casa doble unless you've heard them play. Their marvelous sense of rhythm gives you the very essence of South American music.



MARYBLANCA Y ALFONZO

This affectionate couple look like newly-weds—and they are! And what is more their romance started in the studios of YV2RC at Caracas, Venezuela when they started broadcasting together. In real life they are Mr. and Mrs. Luis Alfonzo Larrain. Their comedy sketches and Latin-American songs delight many an American listener to this popular station.

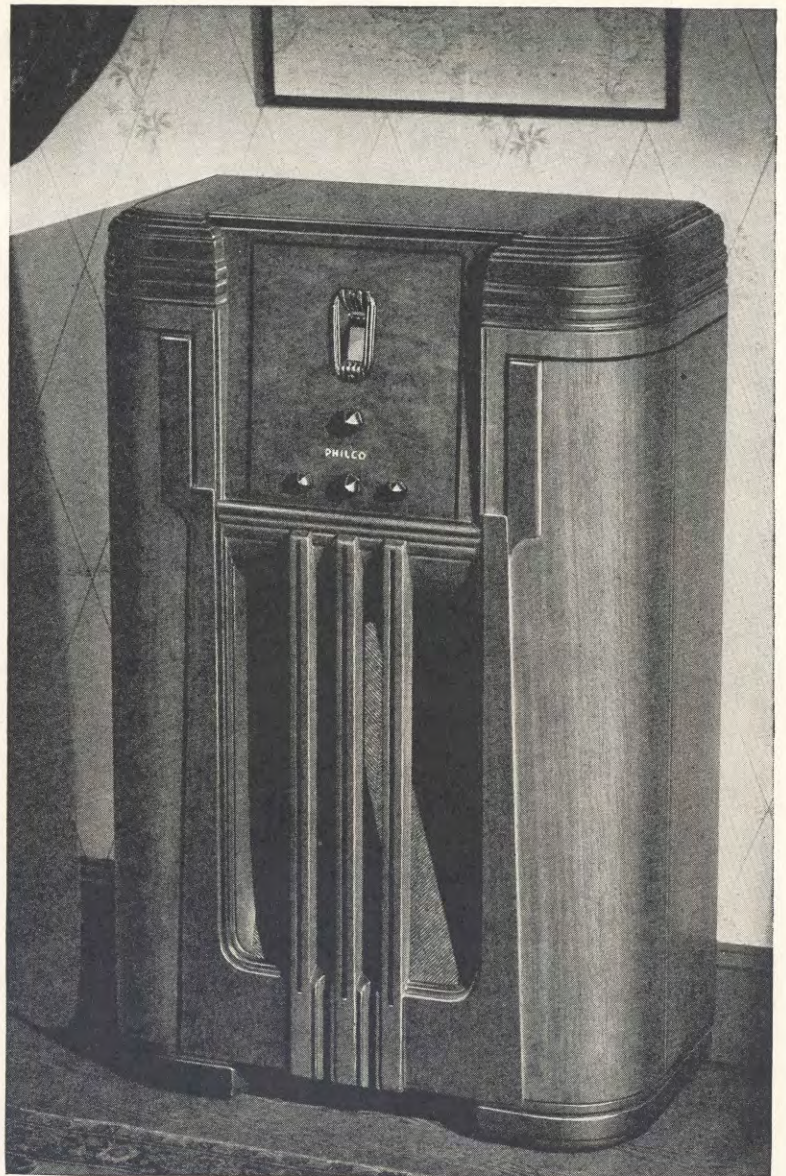
Never before Foreign Reception like this!

You'll marvel at these new 1935 PHILCOS. For now, you can enjoy the finest, most thrilling foreign reception you ever heard! From Rome to Rio de Janeiro, from Berlin to Barranquilla, from London to La Paz, from Madrid to Maracaibo—from all over the world, as well as at home, the new PHILCOS bring you new entertainment, new thrills.

Only in PHILCO are you certain of getting this greater performance. For only PHILCO has the tremendous sales that make possible the greatest radio research laboratories and engineering staff in the world—your assurance of a radio correctly engineered for the extremely complex problems of foreign reception.

Properly installed with a PHILCO all-wave aerial, a new short-wave PHILCO will bring you foreign stations with almost the same regularity as you would expect from American stations a few hundred miles away!

Decide now to trade-in your present radio toward one of the 1935 PHILCOS. Forty-nine magnificent models from which to choose! Your PHILCO dealer will be glad to give you a demonstration and explain his easy-payment plan.



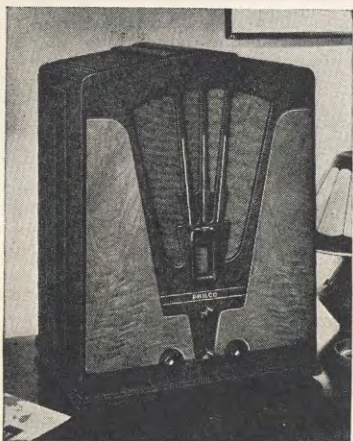
NEW 1935 PHILCO 16X

World-wide reception plus tone such as only PHILCO can give. PHILCO'S Patented Inclined Sounding Board is the greatest single development in scientific sound reproduction.

- 1 Its inclination directs the straight-traveling high tones up to ear level, giving brilliance and clearness.
- 2 Its large baffle area brings out all low tones, giving mellowness and depth.

RESULT: All music and speech are distinct and natural, as if the artists were present "in person."

And every other worth-while radio improvement, including 5 Tuning Bands, Bass Compensation, Four-Point Tone Control, Super Class "A" Audio System, Auditorium Speaker, Shadow Tuning, Automatic Volume Control, Illuminated Station Recording Dial, PHILCO High-Efficiency Tubes, etc. Superb hand-rubbed cabinet of gorgeous, costly woods.



PHILCO 16 Baby Grand

Quiet elegance and attractive simplicity characterize the design of this powerful new Baby Grand. Dark piano-toned woods, decorated with Butt Walnut and old ivory trim, make it a welcome addition to any room. Hand-rubbed satin finish.

Employing the same chassis as the 16X, this distinguished PHILCO creation gives you marvelous radio performance. Here, in compact form, is a radio that enables its owner to enjoy the finest programs the world has to offer.


PHILCO

A musical instrument of quality

Tune-in
PHILCO'S New Program on EAQ Madrid, Spain—(9.87 on your PHILCO dial)—Sundays, 7 P. M.
Eastern Standard Time

A PHILCO FOR EVERY PURSE AND PURPOSE
 AMERICAN and FOREIGN BROADCAST RECEIVERS . . . \$39.95 to \$600
 AMERICAN BROADCAST RECEIVERS . . . \$20 to \$200
 NEW PHILCO AUTO RADIOS . . . \$39.95 to \$75

Prices slightly higher Denver and West—also in Canada. All prices subject to change without notice.


 PHILCO
 Replacement Tubes
 Improve the Performance
 of ANY Radio

LISTEN TO BOAKE CARTER OVER KEY COLUMBIA STATIONS

Your Passport to Europe—A NEW PHILCO

You'll thrill to the vast wealth of fine entertainment heard from European stations

ENGLAND

From the big short-wave stations at Daventry (London), you will enjoy truly superb entertainment. England has gone into short-wave broadcasting in a really big way. Every day by means of directional broadcasts she sends news



OLIVE GROVES

This popular star of the English short-wave stations GSA, GSB, GSC, GSD or GSE at Daventry (London), has been broadcasting since April, 1926. She may be heard in almost every kind of radio program—concerts, revues, musical comedies and radio plays. She has had considerable experience, playing in the famous English presentation, "Lionel and Clarissa" and in "The Beggar's Opera" which played at the Lyric Theatre, Hammersmith. Her rich, mellow voice has endeared her to thousands of radio listeners both here and abroad. Miss Groves' musical training was obtained at the Royal Academy of Music in London.

and entertainment to her many colonies scattered half-way around the world. Like many a PHILCO listener, millions of British subjects at home and in her possessions thrill to the striking of Big Ben in the tower of the Parliament Building in London. As you hear it, imagine the feelings of a lonely servant of the Crown in some far-away outpost of the Empire, as he hears through his short-wave set the reverberations of Big Ben as plainly as though he were home in London!

You'll hear Henry Hall and the British Broadcasting Company Dance Orchestra, the BBC Symphony Orchestra, the Wireless Military Band, dance music from famous London cafes

and hotels and countless talented artists which England has at her command. You'll have many an enjoyable time from these stations at Daventry.

SWITZERLAND

Here's your chance to really get first-hand information on affairs in Europe. From the two powerful stations at Geneva you'll hear the opinions and ideas of famous world figures. For stations HBP and HBL are operated by the League of Nations. Occasionally, too, meetings of the League are broadcast. The stations usually broadcast each Saturday from 5:30 to 6:15 o'clock, Eastern Standard Time. Ordinarily they come in strongly and clearly. The talks and announcements are given in three languages, English, French and Spanish.



SWISS GUIDE PLAYING THE ALPHORN

When a Swiss guide blows this Alpine bugle, he needs plenty of room! Used principally by shepherds for calling home their flocks, notes from this ungainly instrument carry for miles, echoing and re-echoing from one Alpine crag to another. Alphorn music is broadcast by Swiss station from time to time.

GERMANY

From Germany's efficient short-wave stations at Zeesen (Berlin), comes some of the finest music it has ever been your privilege to hear by radio. Germany is making a good impression upon the world through her short-wave broadcasts. You'll hear plenty of news reports and a great abundance of magnificent music, played by artists who have generations of musical tradition behind them.



WILLI DOMGRAF FASSBAENDER
Here is one of the finest baritones Germany has to offer. When he sings over the big German short-wave stations DJA, DJB, DJC, or DJD, at Zeesen (Berlin), listeners all over the world are thrilled with the richness and clarity of his voice. He is one of Germany's musical idols.

The programs of German dance music are especially enjoyable. Smooth, swinging waltzes, rollicking Bavarian folk tunes, gay, swift-moving polkas—these and many other types of lively music will give you hours of entertainment.

The programs from Germany are sure to be among your favorites, for they come in excellently and with great power. In fact, reception from Zeesen is almost as reliable as that from stations right here in America. And you needn't worry over your inability to understand German for announcements are made in English also.

PRINCIPAL EUROPEAN SHORT-WAVE STATIONS

Location	Frequency	Time (Eastern Standard)	Location	Frequency	Time (Eastern Standard)
BELGIUM			ITALY		
ORK.....Brussels.....	10.33	1:45 to 3:15 P.M.	HVJ.....Vatican City.....	15.11	5 to 5:15 A.M.; Sat. 10 to 10:30 A.M.
DENMARK			I2RO.....Rome.....	11.81	11:30 A.M. to 12:30 P.M.; 1:15 to 6 P.M.
OXY.....Skamlebaek.....	6.07	2 to 6:30 P.M. Irreg.	HVJ.....Vatican City.....	5.97	2 to 2:15 P.M.; Sun. 5 to 5:30 A.M.
FRANCE			NETHERLANDS (Holland)		
FYA.....Pontoise.....	15.25	7 to 10 A.M.	PHI.....Huizen.....	17.77	Mon., Thur., Fri., 7:30 to 9:30 A.M.; Sat. and Sun., 7:30 to 11 A.M.
FYA.....Pontoise.....	11.90	10:15 A.M. to 1:15 P.M.; 2 to 5 P.M.	PHI.....Huizen.....	11.73	During Winter same as above.
FYA.....Pontoise.....	11.71	2 to 11 P.M.	NORWAY		
GERMANY			LCL.....Jeloy.....	9.55	11 A.M. to 6:30 P.M. Irreg.
DJB.....Zeesen.....	15.20	12:30 to 2:30 A.M.; 4 to 5:30 A.M.; 8:00 to 11:00 A.M.	LCL.....Jeloy.....	6.13	11 A.M. to 6 P.M. Irreg.
DJD.....Zeesen.....	11.76	12:30 to 4 P.M.; 5 to 10:30 P.M.	PORTUGAL		
DJA.....Zeesen.....	9.57	4 to 5:30 A.M.; 8 to 10 A.M.; 5 to 8:15 P.M.	CTICT.....Lisbon.....	12.73	Sun. 7 to 9 A.M.; Thurs. 4 to 6 P.M.
DJC.....Zeesen.....	6.02	12:15 to 4 P.M.; 8:45 to 10:30 P.M.	CT1AA.....Lisbon.....	9.60	Tues. and Fri. 3:30 to 6 P.M.
GREAT BRITAIN			SOVIET UNION (Russia)		
GSH.....Daventry.....	21.47	6 to 8:30 A.M.	RNE.....Moscow.....	12.00	Sat. 10 to 11 P.M.; Sun. 6 to 7 and 10 to 11 A.M.
GSG.....Daventry.....	17.79	6 to 10:45 A.M.	REN.....Moscow.....	6.61	1 to 6 P.M.
GSF.....Daventry.....	15.13	8:45 A.M. to 12:45 P.M.; 1 to 5:30 P.M.	RV59.....Moscow.....	6.00	2 P.M. to 6 P.M.
GSE.....Daventry.....	11.86	8:45 A.M. to 12:45 P.M.	RV15.....Khabarovsk.....	4.25	1 to 9 A.M.
GSD.....Daventry.....	11.75	12:15 to 2:15 A.M.; 6 to 8 P.M.	SPAIN		
GSC.....Daventry.....	9.58	6 to 8 P.M.	EAQ.....Madrid.....	9.87	5:15 to 7 P.M.; Sat. 12 to 2 P.M.; (PHILCO program Sun. 7 P.M.)
GSB.....Daventry.....	9.51	12:15 to 2:15 A.M.; 1 to 5:30 P.M.	SWITZERLAND		
HUNGARY			HBJ.....Geneva.....	14.56	Near 6 A.M.
HAS.....Budapest.....	6.84	3 to 5:30 P.M. Irreg.	HBL.....Geneva.....	9.59	5:30 to 6:15 P.M.
			HBP.....Geneva.....	7.80	5:30 to 6:15 P.M.

RAND McNALLY
POPULAR MAP OF
EUROPE

SCALE 1:17,868,000
1 Inch = 232 Statute Miles
1 Centimeter = 179 Kilometers
Statute Miles
Kilometers
Copyright by Rand McNally & Company, Chicago.
Made in U.S.A.



FRANCE

France, like England, sends daily programs for the benefit of her colonies scattered throughout the world. The stations that Americans hear most often are the ones located at Pontoise, just outside of Paris.

Parisians know how to be gay and it is little wonder that their music is light-hearted and spirited. Very seldom will you get sad or melancholy programs from France. Sometimes the program will be dance music from one of the celebrated cafes in Montmartre or from one of the famous hotels in Paris. More often, however, you hear programs originating in the studios of "Radio Coloniale"



HENRY de TOUVENAL

In charge of the widespread radio activities of the entire French government is Henry de Touvenal, Minister of Posts and Telegraphs for France.

as the Pontoise stations are called.

You'll know you have Paris by the announcement in French: "Ici Radio Coloniale". The Pontoise programs close down with the playing of the French national hymn, the "Marseillaise."

ITALY

Of all the Italian short-wave stations, the one you'll hear most often is I2RO at Rome. You recognize it easily by its women announcers,



A STUDIO IN ROME

Restrained Romanesque architecture, to which has been added an occasional modernistic motif, brings to this Roman broadcasting studio a feeling of dignity and grandeur.

whose soft, pleasing voices have made this station a great favorite among American listeners, particularly the men.

Rome broadcasts much fine music, especially the type for which Italy is so justly famous — opera. The Italians love their opera with greater fervor probably, than any other nation. And how they sing it! The broadcasts usually come from opera houses in Rome and if you have never heard one of these programs direct, you have missed a great treat.

Unfortunately, the addresses and announcements we hear from the Italian stations are given in Italian only. However, when you hear an Italian-speaking woman announcer around 11.81 megacycles on the PHILCO dial, you can be sure you're listening to Rome. You can also catch the phrase, "Radio Roma-Napoli" and thus be doubly certain. Another station you'll undoubtedly hear often is HVJ at Vatican City.

NETHERLANDS (Holland) and BELGIUM

Small though these two countries are in size, both use short-wave radio extensively to keep in touch with their far-flung possessions. Belgium, through its station at Brussels, is often picked up sending dispatches and musical programs to its African province, the Belgian Congo.



A BELGIAN RADIO-DRAMA REHEARSAL

Players and musicians perfect a dramatic presentation which will go out by short-wave to the world at large and to listeners in the Belgian Congo in particular. For Belgium sends many a program to lighten the burden of existence for its subjects in darkest Africa.

Holland, likewise, communicates with Java, Sumatra and others of its possessions on the far side of the world. Station PHI at Huizen is the Holland broadcaster you will hear most often. This station is famous for its talented announcer, Eduard Startz, who speaks seven languages and whose pleasing personality has made him a popular figure in international short-wave broadcasting.

SPAIN

To American listeners, Spain means one particular station, EAQ at Madrid. For this broadcaster provides consistently good reception almost daily. EAQ employs 20,000 watts of power and consequently is nearly always received with good volume. And the programs you will hear possess a variety that ranges from fine orchestral music to the native songs and dances which have been brought down from the Spanish hill country. These latter are played and sung by native musicians and are different from anything you have ever heard before.

EAQ is interesting also for its splendid Sunday evening programs which come to radio listeners all over the world through the courtesy of PHILCO. PHILCO sponsors these programs for the express benefit of short-wave listeners. Be sure to tune-in EAQ each Sunday night at 7 o'clock, Eastern Standard Time.



SENOR ALCALA ZAMORA, PRESIDENT OF THE SPANISH REPUBLIC

President Zamora is shown as he addressed listeners in America recently through the big short-wave station EAQ, at Madrid, Spain. EAQ brings American listeners many interesting personalities and an abundance of spirited entertainment. Not to have heard the fantastic and sometimes grotesque mountain songs of Spain as played and sung by native musicians is to have missed one of the great treats available to the short-wave listener. This is the studio from which the PHILCO program from EAQ (9.87 on your PHILCO dial) is broadcast Sundays at 7 P. M. Eastern Standard Time.

SOVIET UNION (Russia)

The Soviets have learned the power of publicity, and consequently use short-wave radio extensively for informing the world of their progress and for acquainting radio listeners with news of the Soviet Government. All talks and news dispatches are translated into several languages. From the Soviet stations you'll also hear typical Russian music and dramatic productions. While some sections of the United States do not hear the Russian stations well, others pick them up quite regularly. After all, a little uncertainty adds zest to short-wave listening.



COMINTERN BROADCASTING STATION

Located near Moscow, Soviet Union, the Comintern Broadcasting Station is one of the most powerful in the world. Its short-wave programs, given in English as well as in other tongues, are primarily for the purpose of disseminating news of Soviet activities.

SCANDINAVIA



AERIAL VIEW OF KALUNDBORG STATION

Taken from the air was this clear-cut photo of Denmark's official broadcast station, located at Copenhagen, from which come many short-wave programs.

From Norway and Denmark comes short-wave entertainment that's full of the fascinating folk lore of Scandinavia. Gay, lively music to which the young people dance upon the village greens, somber songs in more serious vein that tell of the long Northern winter with its ice and snow — music that's both happy and sad, like the Scandinavians themselves. For they are a rugged race, wresting a meager living from the hardness of a Northern climate.

PORTUGAL

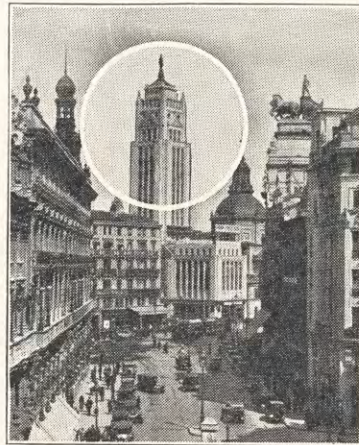
Once the center of a mighty colonial empire, Lisbon now has little of its old-time color and glamour. To the world today, it is merely the capital of a quiet little country from which come some of our choicest wines. But to short-wave listeners, Lisbon has much more interest than just that, for in this old city is located Station CT1AA through which can be heard the same fascinating music that so delighted the Portuguese conquerors centuries ago. Portugal may have lost its power but its music has lost none of its freshness and spontaneity.

Famous European Radio Stars Heard All Over the World



INGRID LARSEN

This beautiful young lady is one of the most popular stars of the German short-wave stations DJA, DJB, DJC and DJD at Zeesen (Berlin). She is a saxophone virtuoso of high musical ability and exceedingly great personal charm. Not only does she provide American listeners with the German equivalent of "hot music," but she can play the classics as well.



EAQ, MADRID

In the tower of this modern building in the Calle de Sevilla, Madrid, Spain, is located the studios of short-wave station EAQ. This powerful Spanish short-wave station is heard practically all over the world and is one of the European stations most regularly heard by American listeners. PHILCO broadcasts from this studio Sundays at 7 P. M. Eastern Standard Time.



HARRY PEPPER

Mr. Pepper is one of the foremost of England's popular song composers. In addition he is a talented actor and pianist. He is a member of the staff of the British Broadcasting Company and is often heard during the Empire Broadcasts from the short-wave stations GSA, GSB, GSC, GSD and GSE at Daventry (London). Many a radio revue has been enlivened by his piano arrangements and accompaniments.



LEAGUE OF NATIONS BROADCAST

From Geneva, Switzerland, at regular intervals are broadcast the proceedings of the League of Nations Council. Announcements from the Swiss stations are made in English, French and Spanish.



ROSALIND VON SCHIRACH

An opera star of the first magnitude is Fraulein von Schirach who is heard by American listeners to short-wave stations DJA, DJB, DJC, or DJD at Zeesen (Berlin), Germany. She is a true artist, her life having been devoted to the training and perfection of her splendid voice. Nearly every opera house in Germany has echoed to her faultless singing. Her utter devotion to the opera is revealed by her answer, when asked what was her favorite role. She said: "I have no favorite role. Always it is that role I am singing at the time."



MABEL CONSTANDUROS AND MICHAEL HOGAN

Who said the English couldn't understand a joke? Listen to these two talented character actors over any of the English short-wave stations GSA, GSB, GSC, GSD or GSE at Daventry (London), and you'll enjoy many a good laugh. Miss Constanduros started broadcasting in 1925. She portrays many different characters in her programs, the most popular of which is called "The Buggins Family." Mr. Hogan assists Miss Constanduros by portraying the male roles in their skits.



SIEGFRIED BORRIES

This young artist, heard frequently over the German short-wave stations DJA, DJB, DJC, and DJD at Zeesen (Berlin), Germany, is First Violinist and Concert Master of the Berlin Philharmonic Orchestra. His life has been one of successive triumphs in his chosen field. His superb artistry and his delicate interpretations of the finest music of the world, have placed him very close to the top among German musicians. He has made concert tours through Germany that have won him ever-increasing acclaim.

For Thrilling Adventure— Try Asia

JAPAN

Delightful programs come from the Land of the Rising Sun—programs that remind you of the tinkle of temple bells, of the rip-



JAPANESE "SHAKU-LACHI" PLAYERS
As tantalizing as the name of the instrument is the musical program being broadcast by this quintet of "Shaku-Lachi" players from Japan. The "Shaku-Lachi" is of the clarinet type, and is made from native bamboo.

pling laughter of kimono-clad maids, and of thousands of cherry trees in bloom. For Japanese programs can never be mistaken for anything but Japanese. Both speech and music are unlike any you'll hear anywhere else on your short-wave travels.

Japan has many short-wave stations, some of which broadcast regularly for the benefit of America, England and Germany.

CHINA

Occasionally, owners of the more powerful PHILCOS will pick up one of the short-wave

stations in China. However, the listener should not expect consistent reception from the other side of the world because of the many factors involved, such as location, atmospheric conditions, skip-distances, storms, etc. But there is this in your favor: If the station can be heard in your location, PHILCO will get it for you.

AUSTRALIA

Many and many a PHILCO owner has experienced the thrill of hearing the laughing cry of the kookaburra bird which begins and concludes programs from VK 2ME at Sydney, Australia. You'll hear much fine music from the Australian stations, for several of them relay the programs of the National Network of the Australian Broadcasting Commission. To hear them well, you will have to arise early in the morning because of the great difference in time.



E. T. FISK
Under the supervision of Mr. E. T. Fisk, Managing Director of the Amalgamated Wireless of Australia, short-wave programs of high quality go out to the four corners of the earth.

PRINCIPAL SHORT-WAVE STATIONS of ASIA, AUSTRALIA and SOUTH PACIFIC

Location	Frequency	Time (Eastern Standard)
CHINA		
XGW..... Shanghai.....	10.42.....	Near 6 A.M.
CQN..... Macao.....	6.02.....	Mon. and Fri. 7 to 9 A.M.
DUTCH EAST INDIES (Netherlands India)		
PNI..... Makasser.....	8.77.....	4 to 5 A.M.
INDIA		
VUB..... Bombay.....	9.57.....	11 A.M. to 12:30 P.M., Wed. and Sat.
VUC..... Calcutta.....	6.11.....	9:30 A.M. to Noon.
INDO-CHINA		
FZS..... Saigon.....	18.35.....	5 A.M. Irregular.
FZS..... Saigon.....	11.99.....	Mornings.
JAPAN		
JYT..... Kemikawa-Cho.....	15.76.....	6 to 7 P.M.
JYK..... Kemikawa-Cho.....	13.60.....	6 P.M.
JVM..... Tokyo.....	10.74.....	4 to 7 A.M.; 7 to 11 P.M.
JVN..... Tokyo.....	10.66.....	3 to 8 A.M.
JYS..... Chiba-Ken.....	9.84.....	4 to 8 A.M. Irregular.
JYR..... Chiba-Ken.....	7.88.....	4:50 to 7:50 A.M.
JAVA		
PMA..... Bandoeng.....	19.35.....	Mornings.
PLE..... Bandoeng.....	18.83.....	6 to 11 A.M. Irregular.
PMC..... Bandoeng.....	18.18.....	3 to 9:20 A.M.
PLM..... Bandoeng.....	12.30.....	Near 6:30 A.M.
PLP..... Bandoeng.....	11.00.....	5 to 7 A.M.
PMN..... Bandoeng.....	10.26.....	Near 5:30 A.M.
PLW..... Bandoeng.....	9.48.....	3 to 8 A.M. Irregular.
PLV..... Bandoeng.....	9.42.....	7:40 to 9:40 A.M.
PKIWK..... Bandoeng.....	6.12.....	5 to 6:30 A.M.
PMY..... Bandoeng.....	5.15.....	Near 11 A.M.
MALAY STATES		
ZGE..... Kuala-Lumpur.....	6.13.....	Sun., Tues., Fri. 6:40 to 8:40 A.M.
PHILIPPINE ISLANDS		
KAY..... Manila.....	14.98.....	5 to 7 A.M., 7 to 8 P.M.
KZGF..... Manila.....	5.80.....	5 to 8 A.M.
SIAM		
HSP..... Bangkok.....	17.75.....	4:30 to 6:30 A.M.
SUMATRA		
YBG..... Medan.....	10.40.....	12:30 to 1:30 and 5:30 to 6:30 A.M.; 7:30 to 8:30 P.M.
..... Medan.....	7.23.....	7 to 10 A.M.
AUSTRALIA		
VK2ME..... Sydney.....	10.52.....	1 A.M. to 8 A.M.
VK2ME-VLK..... Sydney.....	9.76.....	4 A.M. to 8 A.M.
VK2ME..... Sydney.....	9.59.....	Sundays only—12:30 to 2:30 A.M.; 4:30 to 8:30 A.M.; 9:30 to 11:30 A.M.
VK3LR..... Melbourne.....	9.58.....	3 to 8 A.M. except Sun.
VK3ME..... Melbourne.....	9.51.....	5 to 7 A.M. Sat.; 5 to 6:30 A.M. Wed.
NEW ZEALAND		
ZLT..... Wellington.....	10.99.....	5 to 7 A.M. Irregular.
HAWAII		
KKP..... Kahuku.....	16.04.....	1 to 7 P.M.
KIO..... Kahuku.....	11.71.....	Evenings.
KKH..... Kahuku.....	7.52.....	Evenings.
KEQ..... Kahuku.....	7.37.....	Evenings.



TOUR the WORLD with this beautiful new 1935

PHILCO

MODEL 144 HIGHBOY

ENJOY radio at its finest! Tune-in thrilling programs direct from all corners of the earth—London, Berlin, Paris, Rome, Madrid, Buenos Aires—as well as your favorite American broadcasts! Tremendous power and true PHILCO tone!

Handsome design and splendid proportion make this model one of the most beautiful Highboy cabinets ever produced—a superb example of PHILCO craftsmanship. Built of two-tone Walnut, with Butt Walnut control panel, hand-rubbed for satin finish.

Latest features include oversize Electro-Dynamic Speaker, Bass Compensation, Automatic Volume Control, Four-Point Tone Control, Shadow Tuning and PHILCO High-Efficiency Tubes.

See and Hear this **NEW PHILCO**—Today!

**EASY
TERMS**

Trade-in Your
Present Radio
on a new

PHILCO



RAND McNALLY
POPULAR MAP OF
ASIA

Including U.S.S.R. in Europe
SCALE 1:41,628,000
1 Inch = 657 Statute Miles
1 Centimeter = 416 Kilometers

Statute Miles
0 200 400 600 800 1000
Kilometers
0 500 1000 1500

Copyright by Rand McNally & Company, Chicago
Made in U. S. A.



JAVA

Java, undoubtedly, has a greater number of short-wave stations for its size than any other country. It is a Dutch possession and keeps in daily touch with the mother country. The big commercial stations are government owned and can be relied upon to keep to definite schedules.

INDIA

For the American listener short-wave reception from India is probably the most uncertain and difficult to get, for there are but few stations in the whole country and these not especially powerful.

Then, too, India is a good many thousands of miles away. However, these obstacles never prevent the real dyed-in-the-wool short-wave fan from tuning these stations in the hope of some day logging them. And often they are rewarded with success!

PHILIPPINES and Hawaii

Manila and Honolulu both have short-wave stations which keep in touch regularly with the big relay stations at Dixon and Bolinas, California. If conditions are favorable, you're likely to hear them almost any evening.



FIJI'S ONLY BROADCAST STATION

"Take me east of the Hebrides where coral islands dot the seas—" East of the Hebrides lie the Fiji Islands. Housed in a thatch-roofed hut is Fiji's only broadcast station! What remarkable programs must come from such a primitive "studio"!

AFRICA SPEAKS!

MOROCCO

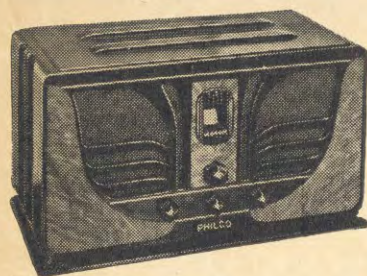
Africa has a peculiar fascination for those who have the spirit of adventure within them. That's why so many PHILCO listeners have enjoyed such a thrill in receiving programs from the French short-wave station at Rabat. The mere thought of Morocco calls up visions of black-skinned natives in fantastic dress, olive-colored Arabs astride ungainly camels and green oases amid seas of burning sand. However, the programs you'll hear are typically French for the most part, with occasional dashes of native music.

BELGIAN CONGO

The one station of any importance in this section of darkest Africa is OPM at Leopoldville. It is an 8,000 watt transmitter and is used primarily for keeping in communication with the mother country. Here's your chance to do a bit of African exploration without exposing yourself to the appetites of wild animals, snakes and insects. Imagine the thrill you may have sometime when you least expect it, of hearing a program from this station, located in a bit of Belgium carved out of the heart of the ruthless jungle!

PRINCIPAL SHORT-WAVE STATIONS IN AFRICA

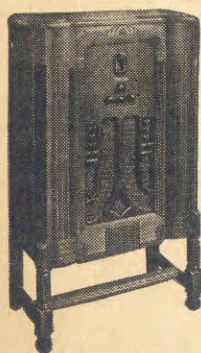
Location	Frequency	Time (Eastern Standard)
OPL..... Leopoldville, Bel. Congo.....	20.04.....	Mornings.
ZSS..... Klipkeval, S. Africa.....	18.95.....	6:30 to 7 and 10 to 10:45 A.M.
SUZ..... Cairo, Egypt.....	13.83.....	7 A.M. to 3:30 P.M.
CNR..... Rabat, Morocco.....	12.83.....	5 to 8 A.M.
RABAT..... Rabat, Morocco.....	12.83.....	Sundays 7:30 to 9 A.M.
OPM..... Leopoldville, Bel. Congo.....	10.14.....	9 to 11 A.M.; 3 to 6 P.M.
SUV..... Cairo, Egypt.....	10.05.....	After 3:30 P.M.
CNR..... Rabat, Morocco.....	8.05.....	Sunday 2:30 to 5 P.M.
Johannesburg, Union of S. Africa.....	6.12.....	4 to 6 A.M.; 8 to 10:30 A.M.; 11 A.M. to 3:40 P.M.
VQ7LO..... Nairobi, Kenya Colony.....	6.06.....	11 A.M. to 2 P.M.



PHILCO 45C

What a value! Big-set features include Automatic Volume Control, Tone Control, Bass Compensation, Electro-Dynamic Speaker, etc. Remarkable power, splendid tone. New compact cabinet of beautifully matched woods. Tune-in the world with this little gem!

PHILCO 45 LOWBOY



selected woods, hand-rubbed to a satin finish.

This beautiful new Lowboy houses the same chassis described above, insuring guaranteed foreign reception.

Curving side panels give elegance to the specially designed cabinet, which is built of Walnut and

WORLD-WIDE RECEPTION

at Amazingly Low Prices!

HERE are PHILCOS that bring in the world—at prices that are sensationally low! Think of listening direct to thrilling broadcasts from London, Berlin, Paris, Rome, Madrid, Buenos Aires, etc. PLUS fine reproduction of American programs, including short-wave reception, even in the daytime, of distant American stations you could not hear at all on standard broadcast radios!

Treat yourself to the best in radio. Enjoy the performance and tone that only a PHILCO can give. You'll be surprised how little it costs to own one!

SEE AND HEAR THE NEW 1935

PHILCO

Easy Terms—Liberal Trade-in Allowance



PHILCO 66

BABY GRAND

Despite its unusually low price, this new 1935 PHILCO provides guaranteed reception of foreign stations! Latest features include Electro-Dynamic Speaker, Automatic Volume Control, Tone Control, PHILCO High-Efficiency Tubes, etc. Spectacular value!

A smart cabinet of distinctive, modern design makes this model a new radio for a new day. Finished in hand-rubbed brown Mahogany, with jet black trim.

Get the Best RADIO RECEPTION

with the New

PHILCO High-Efficiency TUBES



PUT your radio in the finest condition to get all the big programs on the air. Replace your old, worn-out tubes with the remarkable new PHILCO High-Efficiency Tubes which improve the performance of ANY radio! You will be amazed at the small cost of a complete new set of these tubes—and equally surprised at the added enjoyment they will provide.

TUBES TESTED FREE!

Bring in your old tubes—we'll test them for you FREE on our accurate tube tester.

PHILCO HIGH-EFFICIENCY TUBES
are more compact, more efficient and consume less current



ABBB — BOGOTA
ESEN
YV2RC — CARACAS
HI1A — D
VK3LR — MELBOURNE
BI
W2XE — WAYNE
HC2
KFZ — BYRD EXPEDITION
UIZEN
OXY — SKAMLEBACK
GSF —
XETE — MEXICO CITY
HBP — GENEVA
VE9JR — WINNIPEG
W3XAL
PSK — RIO DE JANEIRO
LCL — JELOY
YAQUIL
IZALES
COC — HAVANA
YV3RC — CARACAS

HCJB — QUITO
HJ1ABB — BARRANQUILLA
H1X — SANTO DOMINGO
DJD — ZEESEN
HJ3ABF — B
PK1WK — BANDOENG
W8XAL — CINCINNATI
W3XAL — B
LSX — BUENOS AIRES
HIZ — SANTO DOMINGO