




*NEW EDITION  
the thirteenth.  
Improved  
and extended.*



**WORLD  
RADIO  
TELEVISION  
HANDBOOK  
1959**

**GUIDES YOU QUICKLY  
TO EVERY STATION.  
SHOWS YOU IN A FLASH  
THE STATION YOU ARE RECEIVING.  
RECOMMENDED BY  
ALL BROADCASTING ORGANIZATIONS  
AND THOUSANDS OF LISTENERS.**



**Prices: Da. kr. 14.50, £ 0/14/6, \$ 2.50,  
DM 8.75, Sw.kr. 11.75 plus postages:  
Da. kr. 1.20, £ 0/1/3, \$ 0.20, DM 0.70,  
Sw. kr. 0.70.**

**ALL THE ANSWERS RIGHT AT YOUR FINGERTIPS**

## Here is what this up to the minute world directory will do for you

How to use the World Radio Television Handbook.  
Messages from the United Nations and Unesco.  
Broadcasting organizations of the world.  
Short wave reception, incl. sunspot activities  
throughout 1959.

Medium wave reception throughout 1959.

The most suitable use of the different short  
wave bands all over the world.

Who is who in the broadcasting and television world.

Table of Dx-programmes from all stations.

Broadcasting and television receivers in all countries.

Frequency band allocated to broadcasting,  
television and amateurs.

Operating schedules for all broadcasting stations.  
Leading personalities of all stations.

Addresses, frequencies, powers, languages and  
slogans of all stations.

Interval signals incl. musical identification  
notes for all stations.

List of all long -, medium and shortwave stations.

Program details for all stations.

World time in all countries.

Table of allocation of call signs.

Verifications and text of announcements.

World charts.

**Invaluable for:**

Program- and technical departments of broadca-  
sting- and television stations - Technical univer-  
sities and technicians - Manufacturers of electro-  
nic products - Listeners - Radio-clubs - Broadca-  
sting organisations - Listener- and viewer-  
organisations - Libraries - Advertising agencies -  
Radio- and television journals and newspapers -  
Actors - Musicians.

**Publication date:** 1. December annually.



Numerous photos of the  
„Voices of the World“

## SUMMER SUPPLEMENT

### to the WRH

Thousands of organizations, experts, listeners, clubs and so forth, which use WRH in connexion with their work or hobby, have asked us to publish in June/July a supplement to WRH for the purpose of correcting the contents of WRH, to publish summer schedules of the most important short wave stations all over the world, and to bring the medium and short wave tables up to date.

As an experiment we are issuing a supplement of this kind in approx. June 1959. In order to be able to estimate the size of the circulation, we ask you to be so good as to inform us as early as possible, whether you desire to reserve one or more copies.

The price, including postage, will be: Dan. Kr. 4.00, £ 0/4/6, \$ 0.70, DM 2.50, Sw. Kr. 3.00.

## WORLD RADIO BULLETIN

is a valuable fortnightly supplement to the WRH, which contains the latest news from broadcasting stations all over the world, and thus enables you to keep the contents of the WRH ajour.

Prices: Airmail: Annually: Da. Kr. 38.-, £ 2/-, \$ 5.65, DM 24.-,

Quarterly: Da. Kr. 10.-, £ 0/11/-, \$ 1.50, DM 6.50.

Ordinary mail: Annually: Da. Kr. 22.00, £ 1/6/0, \$ 3.50, DM 15.00.

Quarterly: Da. Kr. 6.00, £ 0/7/0, \$ 1.25, DM 4.25.

## WORLD RADIO PUBLICATIONS

The publications listed below will be available on December 1st this year, simultaneously with WRH. In the course of February-March will also appear: HOW TO BUILD YOUR TV AERIAL and HOW TO IMPROVE YOUR SHORT WAVE RECEPTION (How to build short wave accessories, aeriels and receivers).

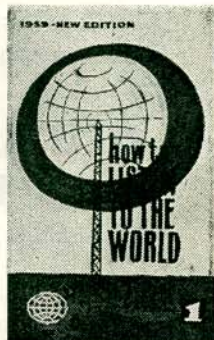
The prices will be approx. Da. Kr. 10.75, £ 0/11/0, Sw. Kr. 9, DM 7.00, plus postage: as for WRH.

## How to LISTEN TO THE WORLD

Contents extended and completely re-edited. An invaluable companion to the WRH and a guide to better reception of medium-wave, short-wave, FM and Television reception.

Contents include: How the m. w., s. w. and ultrashort waves travel. - Exploring the m. w., s. w. and ultra-s. w. bands. Aerials for m. w., s. w. and ultra - s. w. - How to find and identify m. w. and s. w. - How to write reports in different languages. - How to listen to FM and Television stations, to Amateurs, Timesignals and Weather-reports. - How to learn languages by radio - How to identify the different languages. - Hints and tips told by experienced world listeners in all parts of the world.

Prices: Da. kr. 6.50, £ 0/6/6, \$ 1, DM 4.00, Sw. kr. 5.00 plus transport Da. kr. 0.50, £ 0/0/6, \$ 0.10, DM. 0.30, Sw. kr. 0.40.



# RADIO SWEDEN

transmits

in English  
French  
German  
Spanish  
Portuguese  
Swedish

Well-known

for correct  
news  
unbiased  
comment

Write for folder

showing frequencies & schedules

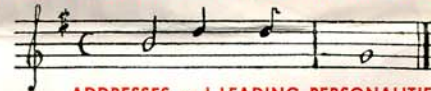
**RADIO SWEDEN . STOCKHOLM 7  
SWEDEN**

## INVALUABLE INFORMATION ON EVERY PAGE

Excerpts from the  
**WRH 58**  
showing the valuable  
nature of the  
contents



### INTERVAL SIGNALS INCL. IDENTIFICATION IN NOTES



### ADDRESSES and LEADING PERSONALITIES

ADDR.: Deutsche Welle, WDR.-Funkhaus, Köln, Wallrafplatz 5 or Postfach 239, Köln. - L.P.: Intendant: Hanns Hartmann, Chief Editor: Dr. Hans Otto Wesemann, Dx-Editor: Horst A. C. Krieger.

### TABLE OF THE MOST SUITABLE METRE BANDS

The listener's area	Local time	May June July August									
		1	2	3	4	5	6	7	8	9	10
1. Scandinavia	9	25	25	25	25	16	25	16	16	16	16
	15	25	25	16	25	16	13	13	16	16	16
	21	25	25	16	19	16	13	16	13	16	25
2. Central-Europe	9	25	19	25	19	16	25	13	13	13	5
	15	25	25	16	16	13	13	13	13	13	25
	21	25	25	16	16	13	13	16	13	13	25

### WORLD CHARTS



### HOME SERVICE SCHEDULES FOR EACH STATION

Prgr. 1: 227 kc/s W. 03.57-22.10 (Sat. 22.40) Sun. 05.00-22.40.  
Prgr. 2: 818 kc/s W. 03.57-11.20 (Sat. 11.25), 14.05-23.00 (Sat. 24.00) Sun. 04.30-23.00.  
Prgr. 3: FM: W. 03.57-11.20 (Sat. 11.25), 14.05-19.35 (Thurs. 19.30), 20.00-22.00, Sun. 04.30-19.25, 20.00-22.00.  
NAT. MUSIC.: Chopin Concerts Prgr. I: Sun. 15.00 Prgr. II: Wed. 20.00, Sat. 09.30. - N., Commentary: Prgr. I: W. 04.00, 05.00, 06.00.

### LIST OF ALL SHORT WAVE STATIONS IN THE WORLD

kc/s	m	kW	Call	Stations and countries
6000	50.00	0.4	OEI20	Innsbruck, Austria
	50.00	15/100		Moscow, USSR
	50.00	40		R. Nacional, Spain
	50.00	1	DZH4	Voice of the Philippines, Phil.
	50.00	5	CXA2	R. Sur, Uruguay
	50.00	0.25	TGTA	R. Sonora, Guatemala
	50.00	5	PRK5	R. Inconfidencia, Brazil
	50.00	0.3	YNBH	R. Panamericana, Nicaragua

### WORLD TIME IN ALL COUNTRIES

	Normal Time	Summer Time
Aden	+3	+3
Afghanistan	+4 1/2	+4 1/2
Alaska*	-8	-8
Albania	+1	+1
Algeria	+1	+1
Andorra	+1	+1
Angola	+1	+1
Argentina	-3	-3

### TEXT OF ANNOUNCEMENTS (SLOGANS) FOR EACH STATION

ANN.: Dutch: "Hier Radio Nederland in Hilversum". E.: "This is the International Service of Radio Nederland in Hilversum, Holland". Ind.: "Disini Hilversum, Siaran Indonesia Radio Nederland". - Sp.: "Aqui Radio Nederland de Hilversum, Holanda". - Arabic: "Huna Hilversum - al-idha'atu'l hulandiya bi'l-lughati'l-Arabiya".

### VERIFICATIONS BY QSL-CARDS OR LETTER

#### ANNOUNCEMENT:

Each program ends with these words spoken in English: "This program has come to you from the United States of America". The station identification is then announced in English.

VERIFICATION by QSL-card. No return postage required.

### LIST OF ALL SHORTWAVES FOR EACH COUNTRY

#### STATIONS: 50 or 100 kW

Call	kc/s	m
JOA	6069	49.43
JOB	6080	49.34
JOB2	7180	41.78
JOA2	7242	41.42
JOB81	7242	41.42
JOB20	9525	31.50
JOB3	9675	31.01
JOA3	9695	30.94

### FOREIGN SERVICE SCHEDULES FOR EACH STATION

#### EUROPEAN SERVICE:

German, French, Italian on 6165/9535 kc/s W.: 05.10-07.00, 10.00-13.00, 15.00-22.40, Sat. 05.15-07.00, 10.00-22.40. Sun.: 06.10-22.40. N.: (G=German, F=French) 05.15 (G), 06.00 (G), 06.15 (F), 11.30 (G), 11.45 (F), 18.15 (F), 18.30 (G), 21.30 (F), 22.20 (G).

### LIST OF ALL LONG - AND MEDIUM WAVES FOR EACH COUNTRY

kc/s	Metres	kW	Stations
593	505.8	100	Frankfurt (H.R.) - Germany
—	505.8	20	R. Africa - Tanger
—	505.8	20	Meissner (H.R.) - Germany
—	506	20	Sofia - Bulgaria
602	498.4	20	Karl-Marx-Stadt (DDR) - Germany
—	498.4	2	Damascus - Syria
—	498	100	Lyon I - France
606	495	2/10	Nicosia - Cyprus

### ALL TELEVISION STATIONS OF THE WORLD

**CIRCIUTO CMQ S.A.** (Comm.), Radiocentro, Vedado, Habana. - L.P.: See Sound Broadcasting: Habana CMQ-TV ch. A6 100/50 kW. d. V. Matanzas CMQ-TV ch. A9 29/14.5 kW. V. Santa Clara CMHQ ch. A5 26/13 kW. V. Ramaguey CMJL-TV ch. A6 58/29 kW. V. Santiago de Cuba CMKU-TV ch. A2 14/7 kW. V. - D. PRGR.: 14.00-05.00. - PROJECTED ST.: Ciego de Avila ch. A7 30/15 kW V. Holguin ch. A3 15/7.5 kW. V. Pinar del Rio ch. A3 15/7.5 kW. V.

### LIST OF ALL LONG - AND MEDIUM WAVE STATIONS

	kc/s	m	kW
Luleå	182	1648.4	10
Motala	191	1570.7	150
Sundsvall	593	505.9	150
Östersund	719	417.2	150
Malmberget	773	388.1	2

### LIST OF ALL FM FREQUENCIES FOR EACH COUNTRY

FM: Bjerkreim 90.6 mc/s 60 kW. - Bremanger 93.6 mc/s 15 kW. - Gulen 90.9 mc/s 15 kW. - Hovdefjell 87.8 mc/s 15 kW. - Lyngdal 97.6 mc/s 12 kW. - Stord 91.8 mc/s 60 kW. - Tryvashögda\* 93.5 mc/s 3 kW. - Voss 90.3 mc/s 8 kW. - \* Testtransmissions.

To be sure of a copy, order it right away (order form overleaf) so you can enjoy its every day usefulness as soon as it is published

# DEUTSCHE WELLE

Kurzwellendienst der Arbeitsgemeinschaft  
der öffentlich-rechtlichen

Rundfunkanstalten der Bundesrepublik Deutschland

The VOICE OF GERMANY,  
Deutsche Welle is beamed to the

FAR EAST  
NEAR AND MIDDLE EAST  
AFRICA  
SOUTH AMERICA  
NORTH AMERICA

NEWS IN 5 LANGUAGES

German Language Courses

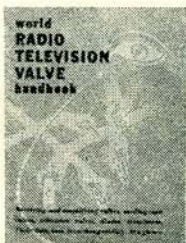
Programme suggestions and reception reports  
are very much welcomed,  
letters should be addressed to

## DEUTSCHE WELLE KÖLN

Funkhaus, Wallrafplatz, Germany

Detailed reports are answered by QSL card

# WORLD RADIO TELEVISION VALVE HANDBOOK



gives the radio and television technician and the radio and television engineer at a glance the correct answer to any practical question concerned with receiving and amplifying valves, television, and cathode-ray valves, crystal diodes, and transistors of any make. DATA, REPLACEMENT or SUBSTITUTE VALVES, CLASSIFICATION, BASE AND PIN CONNECTIONS. Prices: Da. Kr. 13.50, £ 0/13/6, \$ 2.50, DM 9.00, plus postages: as for WRH.

## TRANSISTORS — theory and practice

An up to date and »how to build« handbook, which in an easy understandable manner and in a new way explains: The theory of transistors.

The choice of working-point and its stabilisation.

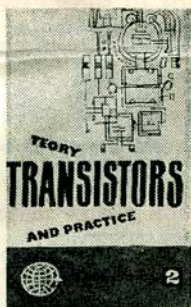
The design of RC-coupled amplifiers and output stages.

Practical circuits with indications of suitable component values.

A survey of data on practically all existing transistor types.

A practical handbook, which will satisfy all technicians and amateurs, who want in an easy way to obtain a theoretical and practical knowledge of transistor technique, and who want also to do practical work.

Price: Da. kr. 9.75, £ 0/9/6, \$ 1.50, DM 6.00 plus postages: as for »How to listen to the world«.



WRH Publications

Agency

### ORDER FORM

To

Aggersundvej 11

Fjerritslev

Denmark

Please send us:

- ..... copy(ies) of WORLD RADIO TELEVISION HANDBOOK 1959
- ..... copy(ies) of How to listen to the world
- ..... copy(ies) of WRH-summer-supplement 1959
- ..... copy(ies) of Transistors — Theory and Practice.
- ..... copy(ies) of World Radio Television Valve Handbook.
- ..... copy(ies) of How to build your TV AERIAL.
- ..... copy(ies) of How to improve your short-wave reception.
- ..... copy(ies) of WR-Bulletin: airmail , ordinary mail , 12 months , six months , three months

Payments by check enclosed , International money order   
By receipt

Name: .....

Firm: .....

Address: .....

Country: .....