

**Allied Radio**  
CORPORATION

833 WEST JACKSON BOULEVARD  
CHICAGO, ILLINOIS

**1940**

Complete  
Index  
On Pages  
191-192

THE  
ATLANTIC  
CLIPPER

EVERYTHING IN RADIO

# AMATEURS!

## HERE'S YOUR BUYING GUIDE FOR 1940!

The following section is your complete directory to everything in Ham Radio. Here is the largest and finest selection of Ham equipment ever offered anywhere. Here is every new 1940 rig, receiver, and gadget—plus ALLIED'S complete listing of all standard lines of parts and accessories. Be wise, O. M.! Stick to ALLIED—the one, dependable source of all Amateur equipment.



430



**Model 610 Power Pack.** A compact, plug-in type power pack permitting operation of Model 430 or 438 receivers from a 6 volt storage battery. Complete, ready to use.  
A14795. NET.....\$12.50



438

## FAMOUS "HOWARD" AMATEUR RECEIVERS

**MODEL 430.** Designed to provide maximum performance for the beginning Amateur or Short Wave Listener with a limited budget. Developed and produced in the Howard Radio Laboratories, world-famous producers of quality radio receivers for many years. Combining streamline modern design with advanced circuits, and a high order of efficiency, the Model 430 is a 6 tube communication type receiver of which any owner can well be proud. Has continuous tuning from 540 KC to 40,000 KC in four frequency range bands, controlled by a range selector switch on front panel. Range indicating pointer at side of multi-scale full-vision dial tells you at all times exactly which frequency range is in use. Full-vision dial is of the slide-rule type with traveling vertical marker for main tuning; separate bandspread indicator dial at side. Features include: Iron-core I.F.'s, Beat Oscillator with adjustable pitch control, Electrical bandspread, A.V.C., Send-Receive standby switch, Audio gain control, built-in dynamic speaker and power supply, and convenient grouping of all operating controls. Entirely self-contained in a small compact table cabinet finished in telephone black, trimmed in satin silver. For 110 volts, 50-60 cycles A.C. Shpg. wt., 15 lbs.

A14790. Complete with tubes. **\$29.95**  
NET CASH PRICE.....  
Time Payments: \$4.50 down, \$4.50 monthly for 6 months.

**MODEL 460.** This newly released Howard ten tube Superhet covers a tuning range from 43 MC to 540 KC in four bands, and incorporates a built-in Noise Limiter and Frequency Monitor. Noise Limiter is very effective in cutting down irregular interference such as ignition noise or atmospheric. New Frequency Monitor has separate drum dial with fundamental calibrations spread over 12" scale. Permits close reading and high accuracy for checking frequency, locating signals of known frequency, and for accurate bandspread pre-setting. Full-length, full-vision dial has separate scale for each frequency range, with separate 340 degree bandspread dial. Other features are: Ceramic coil forms, Vacuum tube voltmeter type "R" meter, Copper-plated chassis, Band-in-use indicator, Iron-core IF transformers, Universal antenna input, Phone jack, AVC, and Indirect dial illumination. Supplied in modern welded steel cabinet, with full set of tubes, and 8" dynamic speaker in matching metal cabinet. For 110 volts 50-60 cycles. Shpg. wt., 44 lbs.

A14793. Model 460, less crystal. **\$79.95**  
CASH PRICE.....  
Time Payments, \$8.00 down, \$6.36 monthly for 12 months.  
A14794. Model 460, with crystal. **\$89.95**  
CASH PRICE.....  
Time Payments: \$9.00 down, \$7.15 monthly for 12 months.

**MODEL 438.** A more advanced model of the famous 430, with additional features that make it one of the finest of the medium-priced communication receivers. Full 8 tube circuit, with tuned R.F. stage on all bands, and two Iron-core I.F. stages. Complete continuous tuning range from 540 KC to 43,000 KC in four bands; front panel range control switch and separate range-in-use indicator dial. Full-vision type slide-rule dial for main tuning, with electrical bandspread and separate bandspread dial. Has built-in 6" dynamic speaker with 2 watt audio output; speaker muting type headphone jack. Power supply is built-in but Model 438 also has provision for use with 6 volt power supply where AC line is not available. Controls on front panel are: AC On-off switch, Beat oscillator pitch control, Range selector, Main tuning control, A.F. gain control, Bandspread tuning control, AVC On-off, Crystal In-Out, Crystal phasing, and Standby switch. In compact streamlined cabinet. For 110 volts, 50-60 cycles. Shpg. wt., 24 lbs.

A14791. Model 438, less crystal. **\$49.95**  
CASH PRICE, with tubes.....  
Time Payments: \$5.00 down, \$5.96 monthly for 8 months.  
A14792. Model 438 with crystal and tubes. **\$59.95**  
Terms: \$6.00 down, \$7.15 mo. for 8 mos. CASH PRICE.....



460



Housed in sturdy black wrinkle finish cabinet. Size, 17 1/8" long, 10" high, and 12 1/4" deep; with carrying handles. Handsomely built.

Regularly supplied for operation from 105-120 volts, 50-60 cycles. Available for use on other voltages on special order. Write for prices.

## HAMMARLUND MODEL HQ-120

The Hammarlund HQ-120 was designed to meet the most critical demands of both the Amateur and the professional operator. This ultra-modern 12 tube receiver covers a continuous tuning range of from 540 KC to 31 MC in 6 bands. Precise workmanship and selectivity, sensitivity, and stability are exceptionally high. Every feature essential for top performance has been incorporated. Special tuning condenser construction permits 310 degrees of bandspread for each Amateur band; direct calibration of tuning dial permits accurate logging. A new type of crystal filter giving six positions of selectivity for 'Phone or CW makes operation a pleasure even under unusually crowded conditions of reception on Amateur bands. Built-in noise limiter circuit overcomes objectionable noise disturbances; operates with or without AVC on and is controlled by panel on-off control. "S" meter indicates in "S" units and is calibrated S1 to S9 and up to 40 DB above "S9." Tuned preselector stage with three high gain IF stages produce highest possible signal-to-noise ratio with maximum attenuation of image frequencies. Panel control of antenna compensator permits adjustment for peak performance on each band. Send-Receive switch with external break-in relay terminals. Automatic voltage regulator compensates for line variations. With 8" P.M. type speaker. Write for complete descriptive literature. For 110 volts 50-60 cycles AC. Wt., 47 lbs.

A14815. HQ-120, with tubes and speaker, less crystal. **\$117.00**  
TERMS: \$11.70 down, \$9.30 mo. for 12 mos. CASH PRICE.....  
A14816. HQ-120-X, with tubes, speaker and crystal. **\$129.00**  
TERMS: \$12.90 down, \$10.26 mo. for 12 mos. CASH PRICE.....



### THE HALLICRAFTERS SX-23

If you appreciate fine equipment, you'll get a real thrill out of operating this Hallicrafter creation. Features a new and improved wide-range selectivity circuit, controllable in six steps from needle-sharp crystal action to broad high fidelity, plus the improved type noise limiter circuit which provides remarkably high signal-to-noise ratio. An entirely new arrangement of eight bands provides continuous tuning from .54 to 32 MC (9.4 to 555 meters). Bands 1-2-3-4 are general coverage from 9.4 to 555 meters, while Bands 5-6-7-8 are the band-spread 10, 20, 40, 80 meter Amateur bands. All Ham bands are spread out over the major portion of the 330 degree tuning dial. Frequency range indicator and signal meter calibrated in "S" units and decibels balance the tuning dial with its multiple scales and large, easily legible figures; all indirectly illuminated. Other features include: Tuned R.F. Stage; Amplified AVC; Iron-core 455 KC IF's; BFO Pitch Control; Tone Control; Phone Jack; RF and AF Gain Controls; Noise Limiter; On-Off Switch; Standby Switch; Controllable Selectivity; Crystal Filter with Phasing Control; Audio Output of 5 Watts; etc. Tubes used are 3-6SK7, 2-6SJ7, 1-6SA7, 1-6SQ7, 1-6B8, 1-6F6G, 1-6H6, and 1-80. Size, 19" long, 12 1/2" deep, 9 1/4" high. For operation from 110 Volts, 60 cycles A.C. Shpg. wt., 56 lbs.

**A14775. SX23. Less speaker. CASH PRICE \$115.50**  
**Terms: \$11.55 down, \$9.19 month for 12 months.**  
**A14776. SX23. Complete with speaker. CASH PRICE \$127.50**  
**Terms: \$12.75 down, \$10.14 month for 12 months.**

# The Latest Model "SKY BUDDY"



### NOW WITH ELECTRICAL BANDSPREAD! TUNES THE 10 METER BAND . . .

For the beginning Amateur, the Short-Wave Listener, or the boy in quest of new thrills by way of Short-Wave Radio, the Sky Buddy has always been the outstanding low-cost choice. This latest, improved model offers even greater features, greater performance and greater value than ever before. Tunes with full electrical band-spread from 545 KC to 44,000 KC in four bands and covers Standard Broadcast and Short-Wave Broadcast bands as well as the Amateur 160, 80, 40, 20, and 10 meter bands. Features are comparable to those usually found only in higher-priced receivers: separate band-spread dial, Beat Frequency Oscillator, send-receive switch, AVC switch, Pitch control, AF gain control, phone jack, etc. Has built-in speaker offering excellent tone quality. The Sky Buddy uses only six tubes—1-6K8G, 2-6K7G, 1-76, 1-41, and 1-80—but its performance is characteristic of most 8 tube sets. Antenna input for either doublet or Marconi type antenna systems. Although supplied for AC operation, the Sky Buddy is also equipped with a simple plug and socket arrangement at the rear which permits the use of a 6 volt storage battery and "B" batteries or vibrator power pack for portable use, or in remote areas where AC lines are not available. The Sky Buddy is a true communication-type receiver at low price. For 110 V. 50-60 cycles A.C. Shpg. wt., 20 lbs.

**A14770. Model S19-R With tubes. NET CASH PRICE \$29.50**  
**Time Payments: \$4.43 down, \$4.43 monthly for 6 months.**



### HT-7 FREQUENCY STANDARD

An all-purpose calibrating instrument for all types of frequency checking in the "Ham" station. Consists of a stable crystal oscillator providing either 100 or 1000 KC output, plus a 10 KC multivibrator and harmonic amplifier. A real necessity under the new F.C.C. regulations.

**A14788. COMPLETE. NET CASH \$29.50**  
**Time Payments: \$4.43 down, \$4.43 monthly for 6 months.**



### THE NEW "DEFIANT" MODEL SX-24

**MODEL SX-24.** Incorporating many features developed in the famous Hallicrafters Laboratories and previously available only in the SX-23, this new and economically priced communication receiver is truly an outstanding performer. Frequency Meter Tuning is provided by means of two translucent illuminated tuning dials, one for main tuning control and one for the electrical bandspread system, and both directly calibrated. Built-in Noise Limiter; Variable Selectivity in six positions from Sharp Crystal to Broad IF; Carrier level meter calibrated in "S" units and DB. Double-balance bridge-type crystal filter. Frequency stabilization, and a full four band tuning range from 540 KC to 43.5 MC all contribute to peak performance. TRF stage and two high-gain IF's provide ample sensitivity and selectivity. External terminals from stand-by switch for break-in relay control. Supplied complete with tubes. For 110 volts, 50-60 cycles. Size, 19 1/4" x 9 1/2" x 10 1/8".

**A14773. MODEL SX-24, less speaker. CASH PRICE \$69.50**  
**Time Payments: \$6.95 down, \$8.29 monthly for 8 months.**  
**A14774. MODEL SX-24, with speaker. CASH PRICE \$81.50**  
**Time Payments: \$8.15 down, \$6.48 monthly for 12 months.**  
**142 A14777. 12" PM Speaker matching metal cabinet. CASH PRICE \$12.00**



### THE FAMOUS SKYRIDER 5-10

The Skyrider 5-10 was specifically designed to render exceptionally efficient performance on the ultra high-frequency range in two bands from 27,000 KC to 68,000 KC. It is ideal for the Amateur who specializes in ultra H. F. work, and for Municipal Dept. communications service. Uses new RK1852 tube as RF amplifier, offering U. H. F. sensitivity of better than 1 Mv. 1600 KC IF stage provides band width of 30 KC at 10 times down. This unusual combination of sensitivity and selectivity is only one of the features which make the Skyrider 5-10 outstanding. Other features include: noise silencer; A.V.C. switch; send-receive switch; R.F. and A.F. gain controls; Beat Frequency Oscillator; Tone Control; Pitch Control; phone jack; built-in speaker, etc. Powerful new 8 tube circuit employs: 1-1852, 1-6L7, 1-6J5, 1-6K7, 1-6P7G, 1-6H6, 1-6F6, 1-80. Separate bandspread dial provides easy, accurate logging and is equipped with inertia tuning control. Equipped with simple plug and socket arrangement for operation from 6 volt storage battery and "B" batteries or from vibrator power pack. For operation from 110 V. 50-60 cycles. Supplied with tubes. Has "S" meter terminals. Shpg. wt., 34 lbs.

**A14783. Model S-21. With Tubes. NET CASH PRICE \$69.50**  
**Time Payments: \$6.95 down, \$8.29 monthly for 8 months.**

# hallicrafters

## THE SUPER-SKYRIDER SX-17

Originally available only as a "Custom" receiver to a limited number of Amateurs, the SX-17 has earned its top-flight ranking in the field by reason of its high performance under all types of service. Created by popular demand, the SX-17 is outstanding in performance, distinctive in modern styling, unbelievable in its selectivity, tone quality and sensitivity. What's more, it offers you every desirable feature of advanced design in engineering and operating flexibility. Here is complete, continuous tuning from the top of the Broadcast band down to 5 meters, from 545 to 62,000 KC. A unique dual tuning system makes the Super-Skyrider the easiest tuning receiver you've ever handled. A directly-calibrated six-band dial with automatic band indicator tells at a glance just what portion of the tuning range it's set to receive. The exclusive Hallicrafter 1000 degree spiral bandspread dial separates closely crowded stations with astonishing ease. Iron-core I. F. stages with Broad and Sharp I. F. expander assure tremendous selectivity. Important, too, is the average over-all sensitivity of better than 1 microvolt for all bands! Has two stages of tuned pre-selection and built-in Automatic Noise Limiter. Imagine the ease and flexibility of operation possible with flywheel tuning, AVC on-off switch; beat oscillator pitch control, variable beat oscillator injector, RF and AF gain controls, send-receive switch, phasing control for I. F. and crystal stage, crystal in-out switch, headphone jack, directly calibrated signal meter, tone control, external terminals for break-in relay control, Broad and Sharp selectivity control, extremely high signal-to-noise ratio, and dynamically-balanced electro-mechanical bandspread tuning. Uses 13 tubes: 2-6K7-RF, 6L7-1st Det., 6K7-1st IF, 6K7-2nd IF, 6R7-2nd Det.-AVC-1st Audio, 2-6V6G-PP Power Output, 6J5-H. F. O., 6J7-Meter Amplifier, 6J7-B. F. O., 6J5-Noise Suppressor, and 5Z3-Rectifier. For 110 V. 50-60 cycles. 12" PM speaker to match receiver is also housed in modern black and chrome cabinet. Shpg. wt., 82 lbs. With tubes. See right for prices of various combinations, including attractive Time Payment terms.



### IT'S EASY TO BUY YOUR S-17 NOW!

Why struggle along with an outmoded receiver that can't cope with present day operating conditions? You can get your S-17 or SX-17 now for only a few dollars down, and spread the balance over 6, 8, or 12 months. Easy payment terms for 12 months given below; but if you prefer, similar easy terms can be arranged for shorter periods of time.

- |   |                           |
|---|---------------------------|
| <b>A14778.</b> S17. Less speaker and crystal.<br>Terms: \$12.55 down, \$9.98 mo. for 12 mos. CASH     | <b>\$125<sup>50</sup></b> |
| <b>A14779.</b> S17. With speaker, less crystal.<br>Terms: \$13.75 down, \$10.93 mo. for 12 mos. CASH  | <b>\$137.50</b>           |
| <b>A14780.</b> SX17. With crystal, less speaker.<br>Terms: \$13.75 down, \$10.93 mo. for 12 mos. CASH | <b>\$137.50</b>           |
| <b>A14781.</b> SX17. With crystal and speaker.<br>Terms: \$14.95 down, \$11.89 mo. for 12 mos. CASH   | <b>\$149.50</b>           |

## THE POPULAR SKY-CHAMPION

Meet the Sky Champion!—a real winner for quality performance—a blue-ribbon champion in its price class. It's "got what it takes" to make it a favorite with the Short-Wave DX fan and Amateur operator. Features are: separate Bandsread dial, RF and AF gain controls, individual coils for each band, inertia tuning mechanism, Beat Frequency Oscillator, AVC switch, Tone Control, Beat Oscillator switch, send-receive switch, Pitch Control, Band switch, phone jack, and others. Here, too, is continuous tuning in four overlapping bands from 545 KC to 44,000 KC for dependable reception on Broadcast, Amateur, and Short-Wave bands. Eight tubes: 2-6K7, 6L7, 2-6J5, 6Q7, 6F6, and 80—are arranged in a modern circuit which provides maximum gain, selectivity, and sensitivity. Speaker is built in—there's nothing else to buy. Signal-to-noise ratio is surprisingly high. In fact, in every way, the Sky Champion is a super-efficient low-priced receiver that will put a real thrill into SW DX-ing or Amateur operation. It offers you professional styling, conveniently grouped controls, operating flexibility, and above all, precision workmanship and performance that are truly outstanding. Has provisions for operating from batteries or from vibrator type power pack and 6 V. storage battery. For 110 V. 50-60 cycles A.C. Shpg. wt., 34 lbs.

- A14771. S-20. With Tubes. NET CASH PRICE. \$49<sup>50</sup>**  
Time Payments: \$4.95 down, \$5.90 monthly for 8 months.



## THE SKYRIDER MARINE MODEL

A new, improved model of an 8 tube receiver for special communication requirements such as Marine and Aircraft service, for Jewelers, Press stations, and other services which require dependable reception on frequencies from 140 KC to 18.5 MC. In its design, especial emphasis has been placed on 600 meter and 700 meter operation. Tunes from 16.2 to 2150 meters (18.5 MC to 140 KC) on 4 Bands. Uses: 2-6K7, 2-6J5, 1-6L7, 1-6Q7, 1-25L6, and 1-25Z5 tubes. Incorporates many features such as: Built-in speaker, AVC, Beat Oscillator, Tone and Volume Controls, RF gain control, Phone jack, and Stand-by switch. Sensitivity and selectivity are excellent; I.F. selectivity only 18 KC wide at 10 times down. Improved image rejection at the higher frequencies is achieved through the use of 1600 KC-I.F. transformers. Directly-calibrated 338° Main Tuning Dial; efficient mechanical band-spread with separate dial provides easy and simplified tuning. Mounted in sturdy metal cabinet finished in black crystal. This efficiently-designed, ruggedly-built communications type receiver is one of the Hallicrafters finest. For 110 Volts AC or DC operation; with tubes and built-in speaker. Shpg. wt., 50 lbs.

- A14772. Model S-22. NET CASH PRICE. \$64<sup>50</sup>**  
Time Payments: \$6.45 down, \$7.69 per month for 8 months.

## MODEL HT-6 25 WATT TRANSMITTER

It's been tried before, but only The Hallicrafters could give you the successful HT-6! It's a transmitting instrument of quality throughout, capable of an average power output of 25 watts on any Amateur Band from 1.7 to 60 MC. for either Phone or CW. Coils for any three bands may be plugged in and pre-tuned with a separate crystal for each band; band-switching is a matter of twisting a front panel knob to switch all circuits from the crystal to the antenna. Plug-in coils for use with crystals operating on fundamental frequency are available for 160, 80, 40, and 20 meters. (Slight additional charge for 10 and 5 meter coil-sets.) Electron-Coupled units for the oscillator are available for each of the 160, 80, 40, and 20 meter bands at small extra cost. Tubes used are: 1-6L6 Osc.-Dblr., 1-RK39 R.F. Power Amplifier, 1-6F5 Mike Preamplifier, 1-6J5 Audio Amplifier, 2-6L6G Class AB Modulators, and 2-5Z3 Rectifiers. Size: 20" long, 12" deep, 9" high. For 110 V. 50-60 cycles A.C. Shpg. wt., 75 lbs.

- A14785. HT-6 Transmitter, with all tubes, less coils and crystals. NET CASH PRICE. \$99<sup>00</sup>**  
Terms: \$9.90 down, \$7.87 monthly for 12 months.  
**A14786. Complete with tubes and coils for three bands, less crystals. (Specify three bands desired from choice of 160, 80, 40, and 20 meters.) CASH PRICE. \$113.85**  
Terms: \$11.39 down, \$9.05 monthly for 12 months.  
(Write for complete descriptive literature on HT-6.)

WORLD **NC** FAMOUS  
**NATIONAL**  
 Communication Receivers



**NC-101X AMATEUR MODEL**

An unusually efficient 11 tube Communications Receiver designed exclusively for use on the Amateur bands. Micrometer type dial with 500 divisions and worm gear drive, together with special coil assembly provides maximum bandspread on each band. Has tuned RF stage and two high-gain IF stages for high selectivity and sensitivity with crystal filter for use when QRM is heavy. Carrier level meter calibrated in S units. With tubes and 10" PM speaker. For 110 volts 50-60 cycles. Shpg. wt., 71 lbs. One of the most popular and efficient Ham Receivers in the famous "National" line.

**A14843. NET CASH PRICE..... \$129.00**

**Time Payments: \$12.90 down, \$10.26 monthly for 12 mos.**

**NOTE:** The NC-101X is also available with direct-reading dial as used on NC-100A at same price. Specify NC-101XA on order if desired with direct-reading type dial.



**NATIONAL NC44 RECEIVER**

The NC-44 Communication Receiver combines capable performance with low price. It employs seven tubes in a superheterodyne circuit. The 6K8 first detector and oscillator has exceptional stability and conversion gain. Other circuit features are: Two 456 KC IF stages, second detector and AVC tube, CW oscillator, and 25L6G beam-power tube with 2 watts output. There are separate controls for RF and AF gain, and on-off switches for the AVC and BFO circuits. The self-contained power supply operates on 105-130 volts A.C. or D.C. A straight-line frequency condenser is used in conjunction with separate bandspread condenser. This combination, plus the full-vision dial calibrated in frequency for each range covered and a separate linear scale for the bandspread condenser, makes accurate tuning easy. Both condensers have an inertia-type drive. A coil switch with silver-plated contacts selects the four ranges from 550 KC to 30 MC. Provision is made for either headphone or speaker operation. Shipping weight, 45 lbs. Housed in an attractive, dust-proof steel table type cabinet finished in black wrinkle enamel. With tubes. Speaker is mounted in matching metal cabinet. The "Leader" in the "National" line of world-famous Communications Receivers.

**A14806. NET CASH PRICE..... \$49.50**

**Time Payments: \$4.95 down, \$5.90 monthly for 8 months.**

**NC-44B.** A battery model of the NC-44 for those who have no A.C. or D.C. supply lines. Operates from a 6 Volt storage battery and "B" batteries. With tubes and speaker. Less batteries.

**A14807. NET CASH PRICE..... \$49.50**

**Time Payments: \$4.95 down, \$5.90 monthly for 8 months.**



**NC-80X.** A Communications receiver for operation from any 110 volt A.C.-D.C. line. Tunes 550 KC to 30 MC in four bands. Band switching is controlled from the front panel. New type full-vision dial with multiple scales is accurately calibrated, making tuning and "logging" easy. The NC-80X is equipped with a crystal filter continuously variable from 400 CPS to 5 KC for sharp tuning. Uses 1-6L7, 2-6J7, 3-6K7, 1-6C5, 1-6B8, 1-25L6G, and 1-25Z5 tubes. Beam power output tube (25L6G) supplies 2 watts undistorted to P.M. speaker. Features include AVC, 16 to 1 and 80 to 1 tuning ratios, linear scales, BFO, etc. Complete with tubes, crystal and 8" P.M. speaker in metal cabinet. Wt., 60 lbs.

**A14808. NET CASH PRICE..... \$99.00**

**Time Payments: \$9.90 down, \$7.87 monthly for 12 months.**

**SPECIAL AMATEUR BAND NC-81X RECEIVER**

Similar to the Model NC-80X as described above, but tuning range covers only the 160, 80, 40, 20, and 10 meter Amateur bands with adequate bandspread. For 110 V. A.C. or D.C. With tubes and 8" P.M. speaker.

**A14809. NET CASH PRICE..... \$99.00**

**Time Payments: \$9.90 down, \$7.87 monthly for 12 months.**



**NC-100A SERIES.** An amazingly efficient 11 Tube Superhet with a frequency range of from 540 to 30,000 KC in five bands. Incorporates the efficiency of plug-in coils with smooth, rapid band-change switch. Panel controls are: Band-switch; AVC-Volume-BFO switch; AC on-off and standby switch; RF and AF gain controls; Tone Control, etc. Full-vision dial is calibrated in megacycles, with separate high-speed vernier scale for precision tuning. Built-in tuned R.F. stage operates on all bands. Also has built-in hum-free power supply. Has signal level meter calibrated directly in "S" units. Antenna input for single wire or doublet antenna. Black wrinkle finish cabinet. 10" P.M. speaker supplied in matching metal cabinet. With tubes. Shpg. wt., 71 lbs. For 110 volts 50-60 cycles A.C. operation. One of the finest of Ham receivers.

**NC-100A. AC MODEL. A14840. NET CASH PRICE..... \$120.00**

**Time Payments: \$12.00 down, \$9.54 monthly for 12 months.**

**NC-100AB. BATTERY MODEL.** For operation from 6 volt battery and B batteries. Complete with speaker and tubes; less batteries.

**A14841. NET CASH PRICE..... \$110.50**

**Time Payments: \$11.05 down, \$8.80 monthly for 12 months.**

**NC-100XA. AC MODEL WITH CRYSTAL FILTER. A14842. NET CASH PRICE..... \$142.50**

**Time Payments: \$14.25 down, \$11.33 monthly for 12 months.**



**NHU.** A new and ultra-efficient Communications type superheterodyne receiver for Ultra High-Frequency work. Has tuning range from 27 MC to 62 MC in three bands. Full-vision type dial is accurately calibrated in megacycles for each band. Unique control of tuning and band-changing is accomplished by single tuning knob with sliding gear. Inertia type tuning dial with ratio of 70 to 1. Uses 956 in R.F. stage, 954 first detector, and 955 H.F. oscillator. Also incorporates a CW oscillator, a new type of AVC circuit, a vacuum tube voltmeter type "S" meter calibrated to provide accurate indication of signal level. The NHU has been carefully and accurately designed to provide optimum performance in the Ultra High Frequency ranges. With tubes and 8" P.M. speaker, in cabinet, less power supply. Shpg. wt., 62 lbs.

**A14844. NHU MODEL. NET CASH PRICE..... \$165.00**

**A14845. NHU-B.** Same as above but for battery operation. **NET CASH PRICE..... \$165.00**

**A14846. Type 5856 Power Pack for NHU.** For 110 volt 50-60 cycles. **NET..... \$17.70**

**Time payment terms are shown on page 145.**



### BROWNING VISUAL FREQUENCY MONITOR

Built to the most exacting requirements to answer the problem of precise frequency measurement on the Amateur bands. Basically a heterodyne frequency meter with built-in mixing circuit. Incorporates a highly stable 100-1000 KC oscillator which can be easily checked against WWV, and three other separate oscillators covering the Amateur 160, 80, 40, 20, 10, and 5 meter bands. Calibrated 5 1/2 inch laboratory type dial permits accurate frequency checking as close as 2 KC at 14 MC. Electric eye provides visual indication of zero beat; also indicates frequency deviation of carrier. Operates from 110 volt AC or DC. Extremely flexible in operation and can be read directly without charts or computations. Complete with tubes. Shpg. wt., 13 lbs.

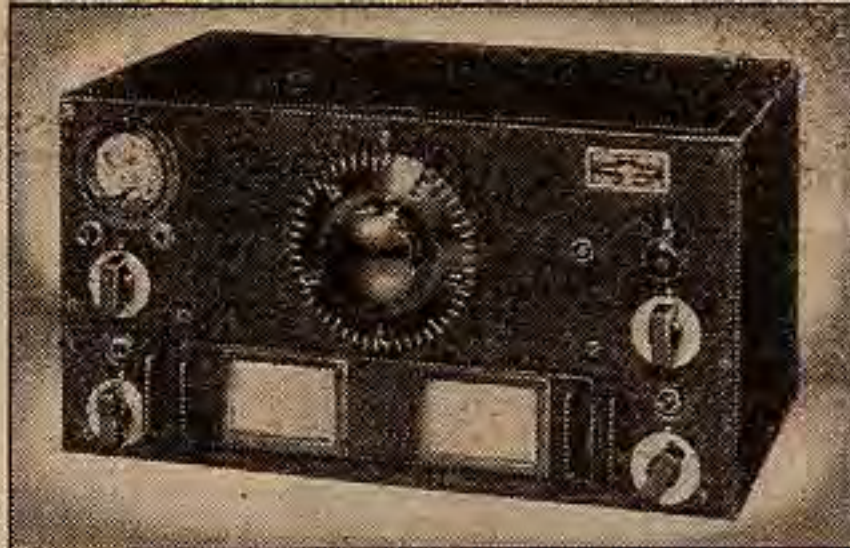
**\$31<sup>35</sup>**

**A10670 NET**  
T.P.: \$4.70 down, \$4.71 mo. for 6 mos.

### 100-1000 K.C. STANDARD

The "heart" of the Browning Frequency Monitor, a highly stable EC coil unit is available separately for those who prefer to build their own 100-1000 KC. standard. In 2"x2"x5" shielded can; with "Silver Cap" padders.

**A10681**  
**BL2FS. NET**..... **\$3<sup>45</sup>**



### FAMOUS NATIONAL HRO

World-famous for performance; built to meet the most exacting of communication requirements. HRO's can be found in daily use the world over by top-ranking Amateur and Commercial stations. With two preselector stages providing remarkable image suppression and high Signal-to-Noise ratio and two high-gain air-tuned IF stages with Litz-wound coils, the usable sensitivity and selectivity are exceptionally high. Other circuit details include manual and automatic volume control; vacuum-tube-voltmeter type carrier level indicator with meter calibrated in "S" units; single-signal crystal filter with wide-range adjustable selectivity; single micrometer-type dial tuning with 20-to-1 gear drive; extreme bandspread that spreads each Amateur band (except 160 meters) over 400 divisions of the 500 division dial; ganged, pretuned coil assemblies; stand-by switch; and simple switching device to convert coils for general coverage use. Supplied complete with coils covering 1.7 MC to 30 MC, and full set of tubes (3-6C6, 4-6D6, 1-6B7, 1-42). Requires power supply listed below. Shpg. wt., 62 lbs.

**A14802. HRO Standard**, less power supply and speaker. **NET**..... **\$179<sup>70</sup>**

**A14803. No. 697 Power Pack** with 80 tube. For 110 V. 50-60 Cycles. Wt., 15 lbs. **NET**..... **\$15.90**

**A14804. MCS 8" PM Speaker** in matching metal cabinet. **NET**..... **\$14.10**

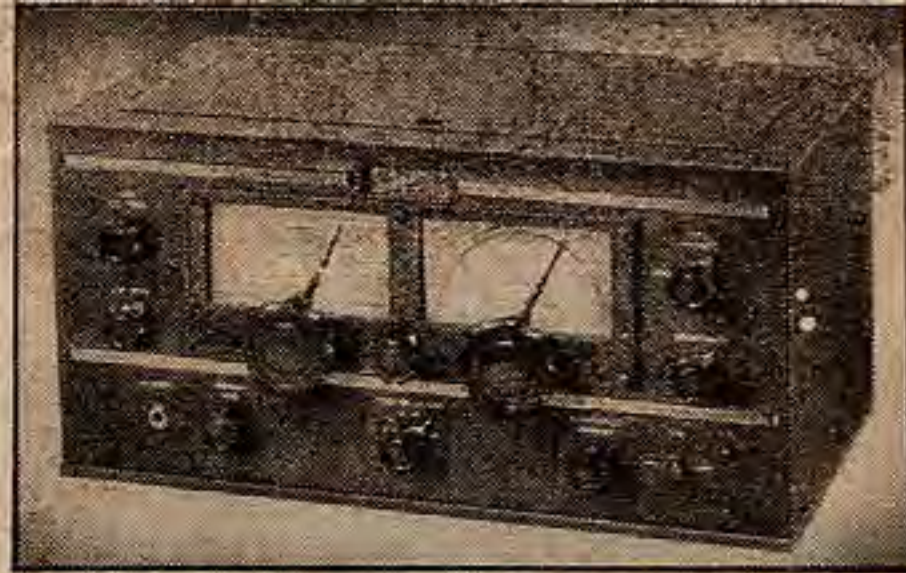
**A14805. HRO Standard receiver** with No. 697 power pack and MCS speaker. **NET**..... **\$209.70**

T.P.: \$20.97 down, \$16.67 monthly for 12 months.

### ADDITIONAL HRO COILS

**A1407. 50-100 KC**..... **\$22.50**  
**A1408. 100-200 KC**..... **18.00**  
**A1404. 175-400 KC**..... **16.50**  
**A1405. 500-1000 KC**..... **12.00**  
**A1406. 900-2000 KC**..... **12.00**

WE CAN ALSO SUPPLY HRO Jr. receiver, as well as HRO STANDARD receiver with rack mounting, or special HRO rack mounted units with coil racks, power supplies, and speaker.



### RME-70 & RME-69 RECEIVERS

Here it is, the precision communication receiver with features galore—features that were formerly available only in the RME-69, as optional and at extra cost. The RME-70 brings you peak performance—precision craftsmanship—selected highest quality components—and an overall order of efficiency that will put pep and thrills into your operating hours. Handsomely and attractively housed in a metal table cabinet, the RME-70 features larger illuminated dials and a larger and more legible signal meter calibrated in "R" units and decibels. Non-fatiguing controls with smooth backlash-free gear drive permit finger-tip hairline tuning. Main dial accurately calibrated from 550 to 32,000 KC in six bands; bandspread dial marked 0 to 180 for logging accurately. Uses 11 tubes; 5-6K7G, 1-6J7G, 1-6K7, 1-6F6, 1-6H6, 1-6A6, and 1-80. Built-in Noise Limiter; break-in control terminals on rear of chassis, R.F. resonator control, and variable selectivity crystal filter all help to make operation flexible. For 110 volts 60 cycle AC. Shpg. wt., 65 lbs.

**A14810. RME-70**, with tubes, less speaker. **CASH PRICE**..... **\$126<sup>75</sup>**

Terms: \$12.68 down, \$10.08 monthly for 12 months.

**A14811. RME-70** with tubes and 8" speaker in matching cabinet. **CASH PRICE**..... **\$138.60**

Terms: \$13.86 down, \$11.02 monthly for 12 months.

### RME-70 & DB-20 COMBINATION

Here's a complete receiver-preselector combination that will really "go places" when it comes to turning in peak receiving performance. Consists of the RME-70 receiver and famous DB-20 Preselector mounted side by side in one cabinet, 28 1/2" long, 10 1/2" wide, 9" high, in either black or grey wrinkle finish. Complete with tubes, less speaker.

**A14812. NET CASH**..... **\$169.35**

**A14813. Speaker** in metal cabinet. **NET**..... **\$11.85**

SEND FOR COMPLETE LITERATURE describing the RME-70 and RME-69 receivers and combinations, DB-20 Preselector, DM-36 and DM-36A Expanders, and other RME Products.

## The Easiest Amateur TIME PAYMENT PLAN Ever Offered!

### SEND US YOUR ORDER WITH DOWN PAYMENT

The purchase of Amateur equipment on Time Payments ordinarily requires more careful consideration than would be necessary if the same equipment were purchased for cash, in order to avoid excessive charges. ALLIED'S Amateur Division now offers the most economical plan available—designed for your protection with lower down payment requirements and lower service charge than ever before. Before you buy, add together the total of monthly payments and down payment, and subtract the normal cash price; the difference is the service charge you pay. You'll find the ALLIED Plan will save you money on the total Time Payment purchase price.

### HOW TO ORDER ON TIME

1. Send us your order with down payment; include the names and addresses of your employer and three business houses from whom you have previously received credit.
2. When we receive your order and down payment, we send you a Time Payment Contract for your signature, and check your credit.
3. Your signed contract is received by us at approximately the same time we complete our credit check. When our Finance Company approves your contract, we make immediate shipment.

### HERE ARE OUR TERMS FOR THE LEADING AMATEUR EQUIPMENT

Description	Cash Price	Down Pay.	No. of Months	Monthly Payments
Hallcrafters				
Sky Buddy	\$ 29.50	\$ 4.43	6	\$ 4.43
Sky Champion	49.50	4.95	8	5.90
Marine	64.50	6.45	8	7.69
Defiant SX-24	69.50	6.95	8	8.29
Defiant & Spkr.	81.50	8.15	12	6.48
S-10	69.50	6.95	8	8.29
S-17	125.50	12.55	12	9.98
S-17 & Spkr.	137.50	13.75	12	10.93
SX-17	137.50	13.75	12	10.93
SX-17 & Spkr.	149.50	14.95	12	11.89
SX-23	115.50	11.55	12	9.19
SX-23 & Spkr.	127.50	12.75	12	10.14
HT-7 Standard	29.50	4.43	6	4.43
Howard 430	29.95	4.50	6	4.50
438 less crystal	49.95	5.00	8	5.96
438 with crystal	59.95	6.00	8	7.15
460 less crystal	79.95	8.00	12	6.36
460 with crystal	89.95	9.00	12	7.15
Hammarlund HQ-120	117.00	11.70	12	9.30
HQ-120X	129.00	12.90	12	10.26
RME-70 less speaker	126.75	12.68	12	10.08
RME-70 with speaker	138.60	13.86	12	11.02
Browning Freq. Mon.	31.35	4.70	6	4.71
Guthman Freq. Mon.	33.52	5.03	6	5.04

Description	Cash Price	Down Pay.	No. of Months	Monthly Payments
National				
NC-44	\$ 49.50	\$ 4.95	8	\$ 5.90
NC-80X	99.00	9.90	12	7.87
NC-81X	99.00	9.90	12	7.87
NC-100A	120.00	12.00	12	9.54
NC-100AB	110.50	11.05	12	8.80
NC-100XA	142.50	14.25	12	11.33
NC-101X	129.00	12.90	12	10.26
NHU	165.00	16.50	12	13.12
HRO, pack & Spkr.	209.70	20.97	12	16.67
NTE-A Exciter	129.00	12.90	12	10.26
NTE-B Exciter	129.00	12.90	12	10.26
NTX-30 Table type	117.00	11.70	12	9.30
NTX-30 Rack type	123.00	12.30	12	9.78
Meissner Stand. Sig.-Shifter with tubes	41.28	4.13	8	4.93
Deluxe Sig.-Shifter with tubes	49.02	4.90	8	5.85
Hallcrafters HT-1 Transmitter	195.00	19.50	12	15.50
HT-2 Transmitter	175.00	17.50	12	13.91
HT-6 Transmitter	113.85	11.39	12	9.05
Triplet Mod. Monitor Table Model	32.24	4.84	6	4.84
Rack Panel Model	33.00	4.95	6	4.96

NOTE: Similar terms can be arranged on any new equipment released by various manufacturers after publication of this catalog. Use this table as a guide, or write to us for full details. Use ALLIED'S Time Payment Plan and Save Money!