

# War Atlas

## and Short-Wave Radio Log

### Names and Dial Readings of Short-Wave Stations in Europe's Capitals

The following stations may be heard at various times during the day. Generally speaking, stations from 9 MC to 12 MC are best heard in the afternoon and at night and those from 15 MC and up in the morning hours.

#### LONDON, ENGLAND

Call Letters	Megacycles	Call Letters	Megacycles
GSB	9.51	GSO	15.18
GSC	9.58	GSI	15.26
GRY	9.60	GSP	15.31
GRX	9.69	GSG	17.79
GSD	11.75	GSV	17.81
GSN	11.82	GSH	21.47
GSE	11.86	GSJ	21.53
GSF	15.14	GST	21.55

#### PARIS, FRANCE

Call Letters	Megacycles	Call Letters	Megacycles
TPA4	11.72	TPA2	15.24
TPA3	11.88	TPB3	17.85
TPB6	15.13		

#### ROME, ITALY

Call Letters	Megacycles	Call Letters	Megacycles
I2RO3	9.63	IQA	14.79
I2RO9	9.67	I2RO14	15.23
IRF	9.83	I2RO6	15.30
IQY	11.67	I2RO8	17.82
I2RO4	11.81		

#### BERLIN, GERMANY

Call Letters	Megacycles	Call Letters	Megacycles
DJN	9.54	DJL	15.11
DJA	9.56	DJB	15.20
DJX	9.67	DJQ	15.28
DJD	11.77	DJR	15.34
DJO	11.80	DJE	17.76
DJP	11.85	DJS	21.45

Radio today is something more than a pleasant, entertaining companion. The march of world events has made it the vital LISTENING POST OF THE EMPIRE! Every Canadian knows that radio is the sentry that never sleeps, and the precious medium through which the Empire stands mobilized for instant communication.

Play your part in these stirring times! Only with a modern short-wave radio can you keep instantly informed of events as they happen — and thus BE PREPARED to "do your bit."



**WAR MAPS INSIDE**

See the New **1940 PHILCO SHORT-WAVE RADIOS!**

**BOWMAN BROTHERS LIMITED**

SASKATOON - REGINA - YORKTON

NORTH BATTLEFORD - PRINCE ALBERT

SWIFT CURRENT - MOOSE JAW

SASKATCHEWAN

**SEE YOUR PHILCO DEALER**

**WORLD DIFFERENCES IN TIME**



The illustrations above show the time in various capitals of Europe when it is 12 o'clock Eastern Standard Time in Montreal. Add one hour for Central, 2 hours for Mountain and 3 hours for Pacific Coast Standard Time.



# ENGLAND

## Resources

Area—94,278 square miles.  
 (Of entire British Empire—  
 13,253,240 square miles).  
 Population—46,189,176.  
 (Of entire British Empire—  
 494,870,104).  
 Army—Actives, 700,000.  
 Reserves, 800,000 men available  
 within two to six months.  
 Maximum military strength—  
 5,000,000 men.  
 Maximum from entire Empire  
 —25,000,000 men.  
 Navy—1,500,000 tons at present.  
 700,000 tons building.  
 Present strength:  
 15 battleships.  
 9 aircraft carriers.  
 63 cruisers.  
 178 destroyers.  
 73 submarines.  
 (plus mine-layers, gunboats,  
 auxiliary vessels).  
 Air Force—3500 first-line planes.  
 2500 reserve planes.  
 6000 total planes.  
 Wartime production rate: 1200  
 a month.

Britain's industrial capacity is the highest in Europe, both in light and heavy industries. With her factories fed by raw materials from her world-wide Empire, the Mother Country with her traditional ally, France, is in a far better position to fight a long war than is Germany. Most of Britain's supplies, except for coal, must come from overseas, but the Anglo-French battle fleet towers so greatly in strength over that of Germany that Hitler could not bottle up the sea lanes and close off Britain's source of supply.

Britain, traditionally a naval power, until a few months ago had no conscription law and possessed but a skeleton army. A tremendous expeditionary land force was swiftly mobilized following the declaration of war and is now active on the Western Front.



## "London Calling...!"

The news of the day direct from the Heart of Empire . . . hear it by short-wave direct. Many times a day London directs its powerful short-wave stations to Canada. And Philco's new 1940 developments have vastly improved your opportunity to hear them, direct in your home.



### PHILCO 16T

All the power and performance you need for short-wave world-wide reception . . . yours at an amazing low price. Has Philco's new Built-in Super Aerial System with special built-in short-wave aerial. No installation required.



# FRANCE

Area—212,659 square miles (with colonies, 4,825,974 square miles).

Population—42,014,594 (with native populations in colonies, 111,091,221).

Army—Actives, 2,500,000.

Reserves, 2,500,000 men available within two to six months.

Maximum military strength—8,000,000 men, including colonies.

Navy—550,000 tons at present.

280,000 tons building.

Present strength:

7 battleships.

2 aircraft carriers.

18 cruisers.

71 destroyers.

76 submarines.

(plus mine-layers, gunboats, auxiliary vessels).

Air Force—2000 first-line planes.

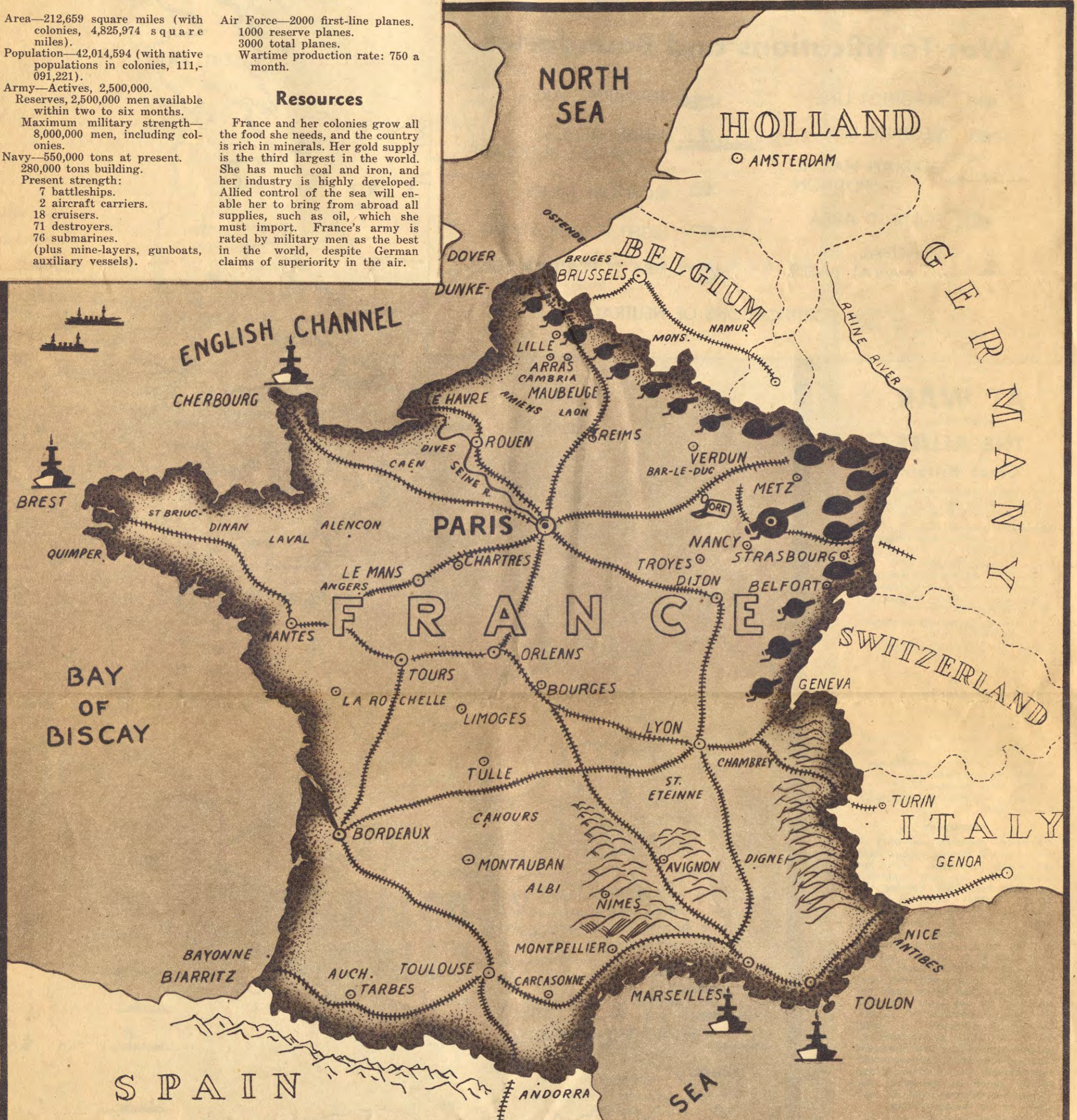
1000 reserve planes.

3000 total planes.

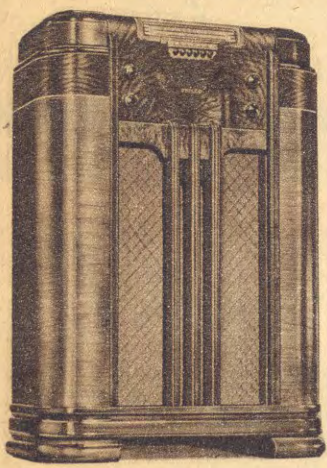
Wartime production rate: 750 a month.

## Resources

France and her colonies grow all the food she needs, and the country is rich in minerals. Her gold supply is the third largest in the world. She has much coal and iron, and her industry is highly developed. Allied control of the sea will enable her to bring from abroad all supplies, such as oil, which she must import. France's army is rated by military men as the best in the world, despite German claims of superiority in the air.



## "COMMUNIQUE...!"



The latest bulletins, the official government reports, right up to the minute from the capital of France... hear them direct by short-wave! With the increased power of many short-wave stations, Philco's 1940 inventions make foreign reception available to many localities that have never enjoyed it before.

### PHILCO 23K

Finest-performing console ever offered at so low a price! Includes Philco's famous Built-in Super Aerial System with Twin-Loop short-wave aerials for world-wide reception. Plug in anywhere and play. Concert Grand Speaker, Electric Push-Button Tuning, easy-to-read Horizontal Dial. Handsome walnut cabinet.

- KEY
- RAILROADS
- NAVAL BASES
- FORTIFICATIONS
- MAGINOT LINE

1 SCALE IN MILES 100



# EUROPE

## War Fortifications and Boundaries

- MAGINOT LINE
- SIEGFRIED LINE
- GERMAN NAVAL DISPOSITION
- FORTIFIED AREA
- PRINCIPAL NAVAL BASES
- FORTIFICATIONS OF NEUTRALS
- INDUSTRIAL AREA
- BRITISH-FRENCH NAVAL BLOCKADE
- IRON ORE MINES
- LIGHT FORTIFICATIONS
- HEAVY FORTIFICATIONS

## AT WAR

### THE ALLIES

#### Great Britain

Area—94,278 square miles.  
(Of entire British Empire—13,253,240 square miles).  
Population—46,189,176.  
(Of entire British Empire—494,870,104).  
Army—Actives, 700,000.  
Reserves, 800,000 men available within two to six months.  
Maximum military strength—5,000,000 men.  
Maximum from entire Empire—25,000,000 men.  
Navy—1,500,000 tons at present.  
700,000 tons building.  
Present strength:  
15 battleships.  
9 aircraft carriers.  
63 cruisers.  
178 destroyers.  
73 submarines.  
(plus mine-layers, gunboats, auxiliary vessels).  
Air Force—3500 first-line planes.  
2500 reserve planes.  
6000 total planes.  
Wartime production rate: 1200 a month.

#### Resources

Britain's industrial capacity is the highest in Europe, both in light and heavy industries. With her factories fed by raw materials from her world-wide Empire, the Mother Country with her traditional ally, France, is in a far better position to fight a long war than is Germany. Most of Britain's supplies, except for coal, must come from overseas, but the Anglo-French battle fleet towers so greatly in strength over that of Germany that Hitler could not bottle up the sea lanes and close off Britain's source of supply. Britain, traditionally a naval power, until a few months ago had no conscription law and possessed but a skeleton army. A tremendous expeditionary land force was swiftly mobilized following the declaration of war and is now active on the Western Front.

#### France

Area—212,659 square miles (with colonies, 4,825,974 square miles).  
Population—42,014,594 (with native populations in colonies, 111,091,221).  
Army—Actives, 2,500,000.  
Reserves, 2,500,000 men available within two to six months.  
Maximum military strength—8,000,000 men, including colonies.  
Navy—550,000 tons at present.  
280,000 tons building.  
Present strength:  
7 battleships.  
2 aircraft carriers.  
18 cruisers.  
71 destroyers.  
76 submarines.  
(plus mine-layers, gunboats, auxiliary vessels).  
Air Force—2000 first-line planes.  
1000 reserve planes.  
3000 total planes.  
Wartime production rate: 750 a month.

#### Resources

France and her colonies grow all the food she needs, and the country is rich in minerals. Her gold supply is the third largest in the world. She has much coal and iron, and her industry is highly developed. Allied control of the sea will enable her to bring from abroad all supplies, such as oil, which she must import. France's army is rated by military men as the best in the world, despite German claims of superiority in the air.

#### Germany

Area—259,000 square miles.  
Population—88,000,000.  
Army—Actives, 2,000,000.  
Reserves, 1,500,000 available within two to six months.  
Estimated ultimate maximum—9,000,000.  
Navy—219,000 tons at present.  
282,000 tons building.  
Present strength:  
7 battleships.  
8 cruisers.  
44 destroyers.  
50 submarines.  
(No aircraft carriers at present; 2 under construction.)  
Air Force—4000 first-line planes.  
4000 reserve planes.  
8000 total planes.  
Wartime production rate, 1500 a month.

#### Resources

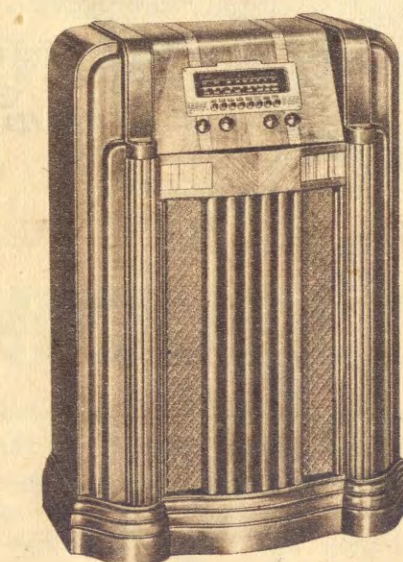
Germany has virtually no gold (her cover on note circulation is

but 1.59 per cent), and lacks iron, oil and rubber, which are vital for quick replacement of planes, tanks and artillery lost in war. Loss of the Lorraine iron fields to France in 1919 was a blow to Germany's hopes of military self-sufficiency. She also needs fats and foods. In peacetime she must import wool, cotton, iron ore, oil, wheat, coffee, butter, fruit, coal, timber and copper ore, and the Allies' plans for winning the war include a naval blockade.



AIR DISTANCES IN EUROPE (In Miles)	
London to Berlin	580
Paris to Berlin	540
Berlin to Warsaw	320
Paris to Warsaw	850
London to Warsaw	900
Warsaw to Moscow	715
London to Rome	915
Paris to Rome	700

Only PHILCO gives you ALL 3



Only Philco for 1940 gives you the Built-in Super Aerial System. More than a mere built-in aerial, it is a combination of features that give you everything you need for full radio enjoyment.

- 1 Plug-in and Play Convenience. No aerial, ground wires needed—plug in anywhere and play.
- 2 New Purity of Tone. Greater freedom from power line noises and man-made static.
- 3 Super-Power. Amazing performance! No outside aerial needed even for foreign reception.

### PHILCO 22XF

Magnificent cabinet design coupled with fine radio performance. Built-in Super Aerial System with Twin Loop Aerials for super reception of both Foreign and Domestic programmes. Electric Push-Button Tuning, Variable Tone Control, Bass Compensation, Cathedral Speaker. Impressive walnut cabinet.

**Holland**  
Area—12,698 square miles.  
Population—8,556,920.  
Army—Active, 41,200.  
Reserves, 200,000.  
Navy—3 cruisers.  
2 coast defense ships,  
3 gunboats,  
8 destroyers,  
22 submarines.  
Air Force—75 planes.

**Greece**  
Area—50,270 square miles.  
Population—6,936,900.  
Army—Actives, 79,000.  
Reserves—260,700.  
Navy—2 cruisers.  
12 destroyers,  
9 torpedo boats,  
4 minelayers,  
6 submarines.  
Air Force—150 planes.

**Finland**  
Area—134,557 square miles.  
Population—3,667,067.  
Army, Actives—29,300.  
Reserves—260,700.  
Navy—2 coast defense ironclads,  
4 gunboats,  
7 torpedo boats,  
5 submarines.  
Air Force—150 planes.

**Denmark**  
Area—16,575 square miles.  
Population—3,706,349.  
Army—Actives, 11,000.  
Reserves, 89,000.  
Navy—None.  
Air Force—65 planes.

## NEUTRAL

**Belgium**  
Area—11,775 square miles.  
Population—8,330,959.  
Army—Actives, 100,000.  
Reserves, 700,000.  
Navy—None.  
Air force—Ten planes.

**Bulgaria**  
Area—39,825 square miles.  
Population—6,077,939.  
Army—Actives, 60,000.  
Reserves, 650,000.  
Navy—Virtually none.  
Air force—100 planes.

**Italy**  
Area—119,744 square miles.  
Population—42,527,561.  
Army—Actives, 1,300,000.  
Reserves, 1,250,000 available within two to six months.  
Maximum military strength—5,500,000.  
Navy—459,000 tons at present.  
216,000 tons building.  
Present strength:  
4 battleships.  
21 cruisers.  
130 destroyers.  
105 submarines (plus mine layers and auxiliary vessels; no aircraft carriers).  
Air Force—2400 first-line planes.  
600 reserve planes.  
3000 total planes.  
Wartime production rate—300 planes a month.

**Lithuania**  
Area—21,488 square miles.  
Population—2,499,529.  
Army—Actives, 25,000.  
Reserves, 275,000.  
Navy—1 vessel.  
Air Force—Virtually none.

**Norway**  
Area—124,556 square miles.  
Population—2,814,914.  
Army—Actives, 14,200.  
Reserves, 120,000.  
Navy—Coast defense units exclusively, with enlistment of 1200 men.  
Air Force—Statistics unavailable.

**Rumania**  
Area—113,886 square miles.  
Population—19,033,363.  
Army—Now mobilized, 1,000,000 men.  
Reserves, 850,000 men.  
Navy—11,000 tons, for Black Sea service.  
Air Force—500 planes.

**Russia**  
Area—8,144,228 square miles.  
Population—168,000,000.  
Army—Actives, 2,000,000.  
Reserves, 15,500,000.  
Navy—315,000 tons.  
3 battleships (plus 3 building).  
6 cruisers.  
38 destroyers.  
164 submarines.  
Air Force—8000 first-line and reserve planes.  
Wartime production rate—1000 a month.

**Spain**  
Area—196,607 square miles.  
Population—24,533,096.  
Army—Actives, 300,000.  
Reserves, 750,000.  
Navy—100,000 tons.  
Air Force—600 planes.

**Sweden**  
Area—173,157 square miles.  
Population—6,250,506.  
Army—Actives, 48,000.  
Reserves, 675,000.  
Navy—6 light vessels.  
14 destroyers.  
31 torpedo boats.  
14 submarines.  
Air Force—Statistics unavailable.

**Switzerland**  
Area—15,944 square miles.  
Population—4,066,400.  
Army—510,000 actives and reserves (virtually all now mobilized).  
Air Force—Statistics unavailable.

**Turkey**  
Area—294,492 square miles.  
Population—16,158,018.  
Army—Actives, 180,000.  
Reserves, 1,100,000.  
Navy—45,000 tons.  
Air Force—500 planes.

**Hungary**  
Area—44,509 square miles.  
Population—9,748,319.  
Army—Actives, 50,000.  
Reserves, 650,000.  
Navy—None.  
Air Force—200 planes.



# GERMANY

Area—259,000 square miles.

Population—88,000,000.

Army—Actives, 2,000,000.

Reserves, 1,500,000 available within two to six months.

Estimated ultimate maximum—9,000,000.

Navy—219,000 tons at present.

282,000 tons building.

Present strength:

7 battleships.

8 cruisers.

44 destroyers.

50 submarines.

(No aircraft carriers at present; 2 under construction.)

Air Force—4000 first-line planes.

4000 reserve planes.

8000 total planes.

Wartime production rate, 1500 a month.

Germany has virtually no gold (her cover on note circulation is but 1.59 per cent), and lacks iron, oil and rubber, which are vital for quick replacement of planes, tanks and artillery lost in war. Loss of the Lorraine iron fields to France in 1919 was a blow to Germany's hopes of military self-sufficiency. She also needs fats and foods. In peacetime she must import wool, cotton, iron ore, oil, wheat, coffee, butter, fruit, coal, timber and copper ore, and the Allies' plans for winning the war include a naval blockade. Hitler hopes to get his supplies from Russia and his neighbors to the southeast, unaffected by the blockade. Above all, he hopes for a "Blitzkrieg," since present reserves are only enough to keep Germany going for a short period.



## EXPLORE THE WORLD!

Hear the news as fast as it happens with a 1940 Short-Wave Philco in your home. Powerful short-wave stations ask you to hear their news. And now, your opportunity to hear them is better than ever, thanks to the new inventions of Philco engineers.



**PHILCO 17T.** Powerful, big set performance in a handsome table model. Great efficiency, especially on world-wide short-wave reception. Has the exclusive Philco Built-in Super Aerial System with special built-in short-wave aerial. No installation needed.

ENGLISH MILES  
10 20 30 40 50 60 70 80 90 100



Now

—with Special Emphasis on Real Radio Values

WE STAGE A THRILLING

# PHILCO RADIO SHOW

For you!

ON PARADE!

Consoles,  
Table Models, Personal Radios  
and Travel-type Portables

A RADIO SHOW IN ITSELF!

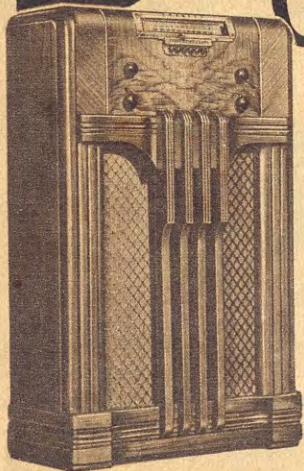
Before you buy any radio see Philco's amazing line of 1940 models! Any radio you might buy has some of the benefits of Philco engineering... BUY A PHILCO AND ENJOY THEM ALL! No matter how much you want to spend or what your radio need... Philco has a model just for you! Visit our store! Compare Philco's prices and big value. You'll be surprised—and will want to tell all your friends how much further radio dollars go on a new Philco!

and remember—PHILCO offers  
A Complete Line of New, Money-Saving  
BATTERY-OPERATED RADIOS

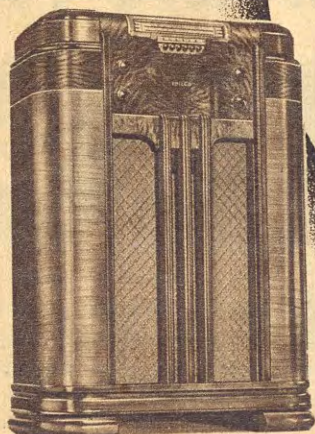
ASK US!



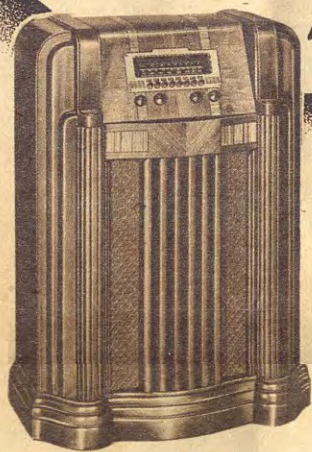
(At right)  
**PHILCO 19XF** Philco's Best Seller for 1940! "Plug-in and play" convenience provided by Philco's Built-in Super Aerial System! 8 electric push-buttons, unique design. Foreign reception.



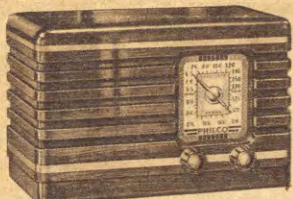
**PHILCO 18F** An unusual Philco value in a classic cabinet. 6 electric push-buttons and other features. Receives Domestic and Foreign Broadcasts.



**PHILCO 23K** Has Philco's far-advanced feature—Built-in Super Aerial System. No installation, no connecting wires. 6 electric push-buttons. Gets Domestic and Foreign Broadcasts.



**PHILCO 22XF** Beautiful console. Built-in Super Aerial System. 8 electric push-buttons and many other features. Receives Domestic and Foreign broadcasts.



**PHILCO 26T** Only 9 1/4" wide, 5 3/4" high, yet you will be amazed at its true Philco tone and beautiful walnut cabinet. Attached aerial. Ideal as a second set.



**PHILCO 24T** A personal radio with Built-in Loop eliminating aerial and ground. Convenient carrying handle. Attractive brown plastic cabinet with contrasting ivory push-buttons and knobs.



**PHILCO 12T** An AC-DC Superheterodyne with built-in loop aerial. Gives "plug-in and play" convenience. Beautiful two-tone cabinet of brown and amber plastic with handle for convenience.



**PHILCO 27T** The smartest table model we've seen. AC-DC with Built-in Loop aerial. Striking combination walnut cabinet accented with ivory plastic.



**PHILCO 16T** Built-in Super Aerial System. 6 electric push-buttons. Domestic and Foreign short-wave reception.

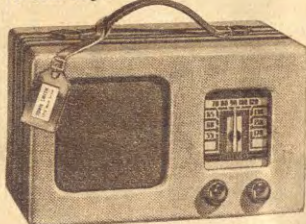


**PHILCO 17T** The finest Philco table model ever offered. Built-in Super Aerial System eliminates need of aerial or ground even for Foreign reception. 8 electric push-buttons.

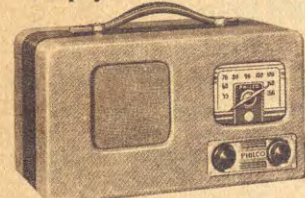


**PHILCO 25T** Powerful AC-DC table model. Costly R.F. Stage and other features including attached aerial.

**PHILCO 14T** Same fine walnut cabinet as 25T. AC-DC Superheterodyne that gets Domestic and Foreign short-wave broadcasts. A real buy!



**PHILCO 401T** Light-weight Philco Portable. Half the size but all the performance. Take it with you... it plays anywhere.



**PHILCO 403T** Another Philco leader in the Portable Radio field. Smartly designed aeroplane luggage-type case. Operates at low cost.



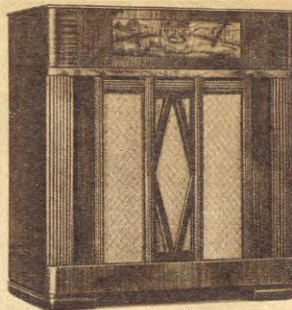
**PHILCO 402T** Imagine receiving Foreign short-wave broadcasts direct with a Portable Radio. It's possible with this Philco Prince of Portables! A beauty!



**PHILCO 404P** Here's the ideal combination — Portable Philco Radio and Phonograph. Enjoy not only radio entertainment but also recorded music!



**PHILCO 21XX** DeLuxe Style Leader! Built-in Super Aerial System. 8 electric push-buttons. Cabinet of highly figured walnut. Super power!



**PHILCO 701** Automatic Philco Radio-Phonograph Combination. Built-in Super Aerial System—no aerial or ground connections needed. Simply plug-in and play. Automatic record changer provides an hour of continuous recorded entertainment.

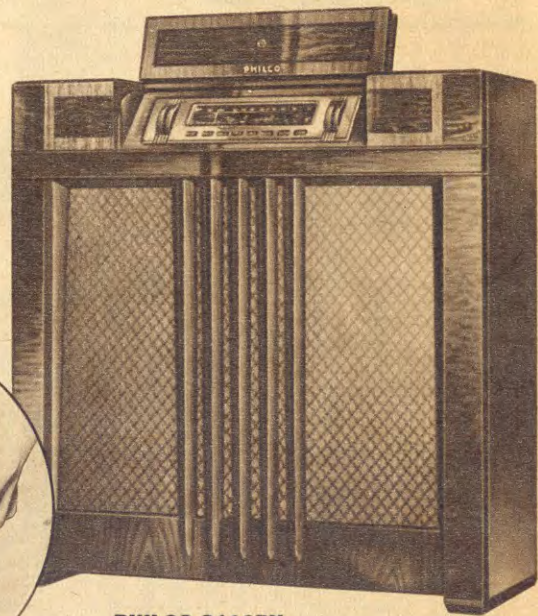
Buy  
Canadian—  
Your  
1940 Philco  
is  
MADE  
IN  
CANADA!

Let us demonstrate  
**PHILCO**  
Wireless Remote  
Control!

**PHILCO 3116RX** Only Philco offers this greatest of all radio inventions! You can tune favourite programmes from any room in your home without wires or connections between the handy Control Unit and the beautiful 3116RX radio receiver. Philco's finest... the ultimate in radio convenience!



**PHILCO 3116RX**  
In circle—The Wireless Control Unit

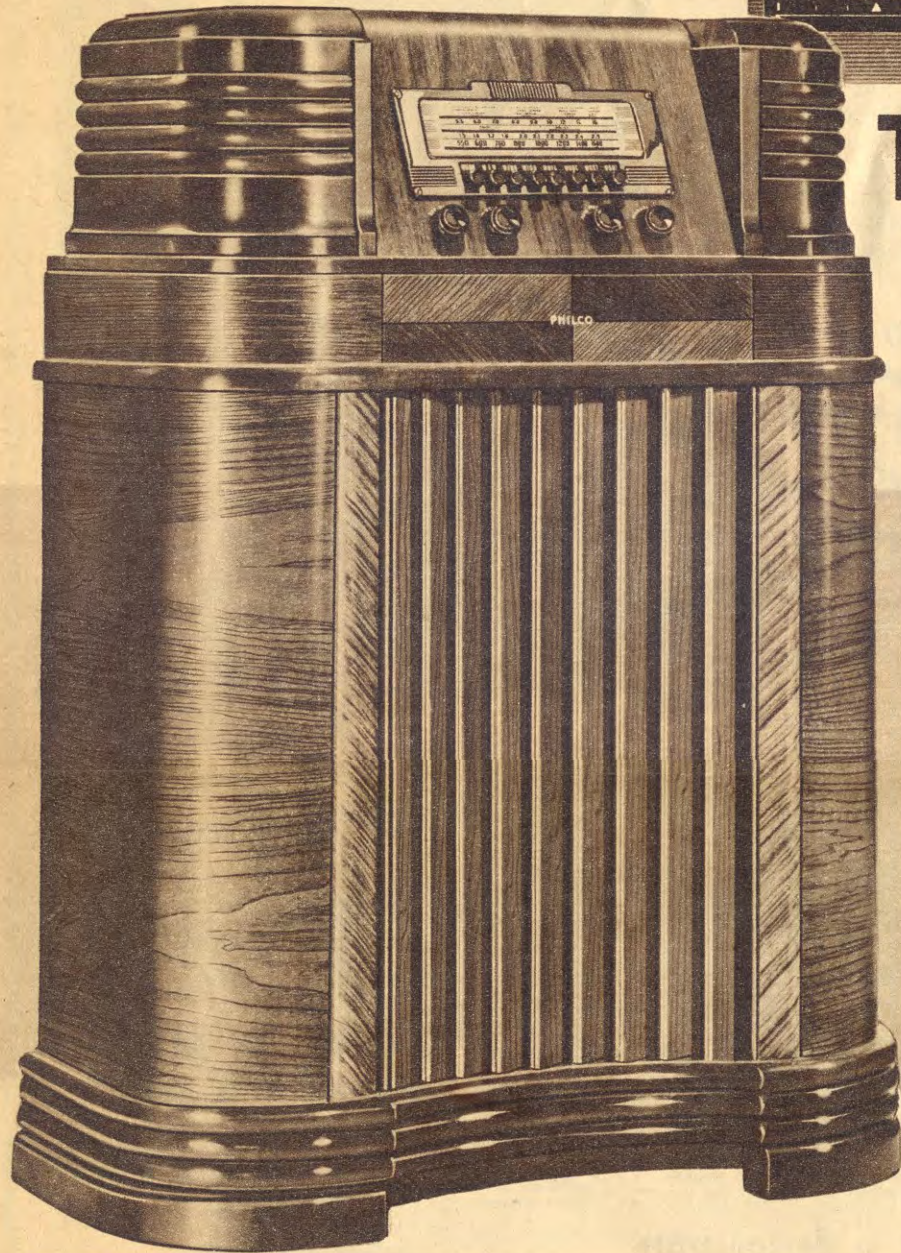
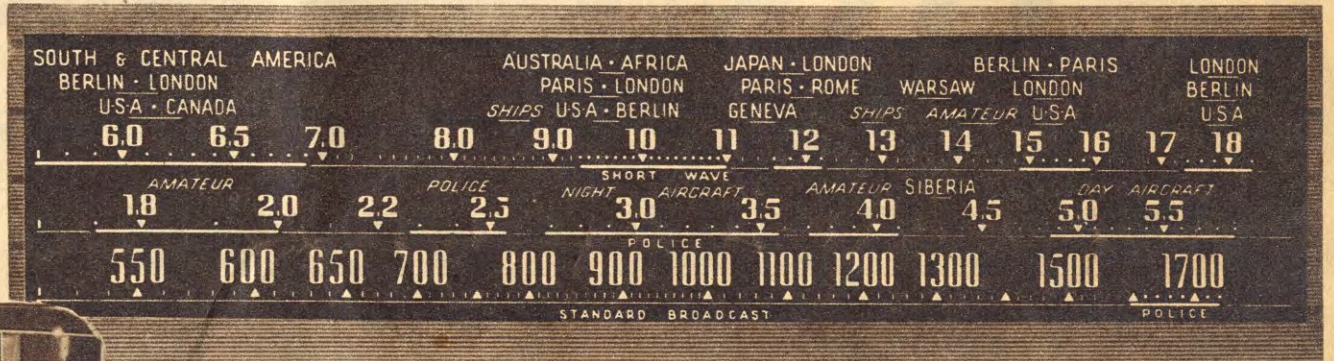


We Offer a Liberal Trade-in Allowance  
For Your Present Radio—  
**EASIER PAYMENT TERMS**



# Hear the NEWS from Europe DIRECT by Short-Wave!

The Philco Short-Wave Dial shows you with clear markings just where to tune for the News Reports from Europe!



## Tune in with the New 1940 PHILCO

### The Best Seller of Radio for 1940!

**PHILCO 19XF.** A sensational value in tone, performance and rich cabinet beauty. Has the new Philco Built-in Super Aerial System... place the radio anywhere, plug in and play. Gets regular broadcasts and powerful Domestic and Foreign short-wave reception. Electric push-button tuning. A large impressive cabinet of richly figured Walnut in contrasting grains. An achievement of value-giving at its price!

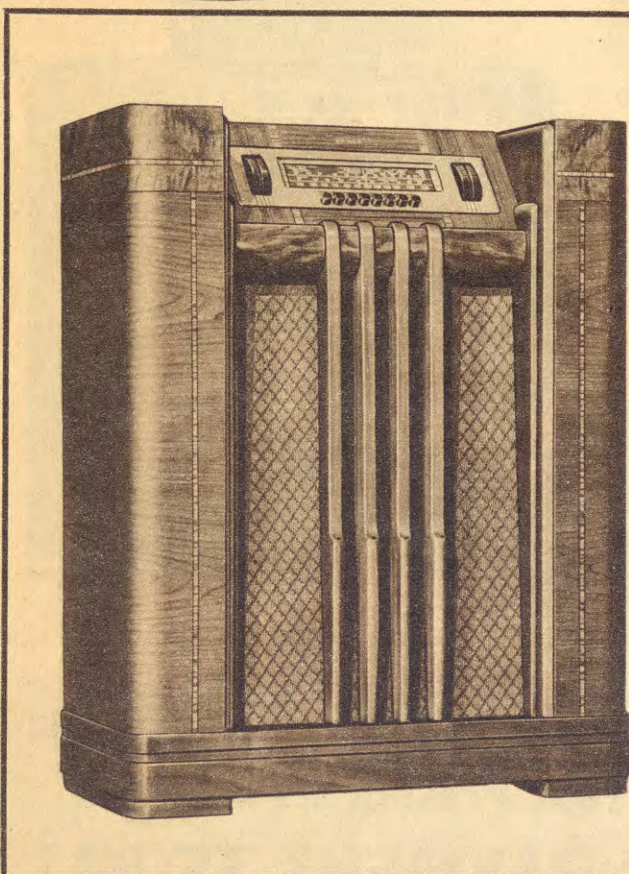
Liberal Trade-in Allowance for Your Old Radio. Small Down Payment; Balance on Easy Terms!

**KEEP ABREAST**, be informed, the air is vibrating with history in the making! Today, more than ever, your radio is a vital part of your home. More than ever, now, it should be a new 1940 *Domestic and Foreign Philco* with the latest improvements of modern radio science. Not only does it bring you the up-to-the-minute reports of the great news-gathering services, but Philco's newest developments have *vastly improved* your opportunity to hear and enjoy short-wave broadcasts direct from the capitals of Europe.

Surely now is the time to trade in your present set for an up-to-date, efficient radio.

#### Only Philco gives you ALL 3

1. **No outside aerial or ground wires.** Just plug in and play.
2. **Purer, clearer tone;** greater freedom from power-line noises.
3. **Super-Power;** even foreign short-wave reception without an outside aerial. All this is yours through the *Built-in Super Aerial System*, an exclusive feature of the 1940 Philco!

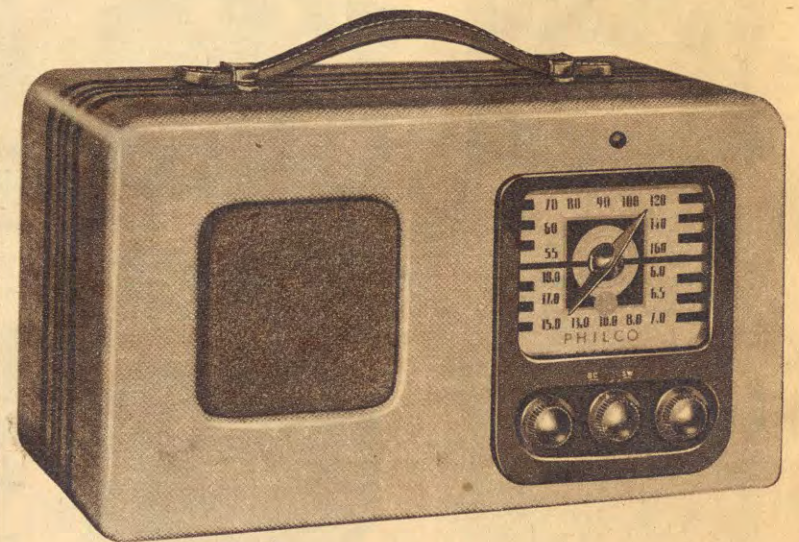


### KEEP POSTED BY SHORT-WAVE

You're closer to the news when you hear it every day by short-wave, direct from Europe's capitals. Listen in... keep informed. A 1940 Philco makes foreign reception more practical than ever before!

#### PHILCO 21XX

Glorious tone and thrilling performance... a quality radio housed in a cabinet of exquisite beauty. Powerful Domestic and Foreign reception, giving you extra efficiency for tuning in short-wave news reports. Has Built-in Super Aerial System, Electric Push-Button Tuning, and many other quality features.



### WHEREVER YOU GO—

Tune in the news  
by Short-Wave!

**PHILCO 402T.** The finest performing, self-powered portable radio ever produced. Has Built-in Super Aerial System including powerful R.F. Stage for extra power and amplification. Gets not only standard broadcasts from vast distances but also amazing performance on Domestic and Foreign short-wave reception. Exclusive built-in *Twin-Loop Aerials* and special low-drain circuit gives *extra* long battery life. Handsome case covered in attractive aeroplane cloth. Come in... See it... Try it!

**LIBERAL TRADE-IN ALLOWANCE — EASIER PAYMENT TERMS**