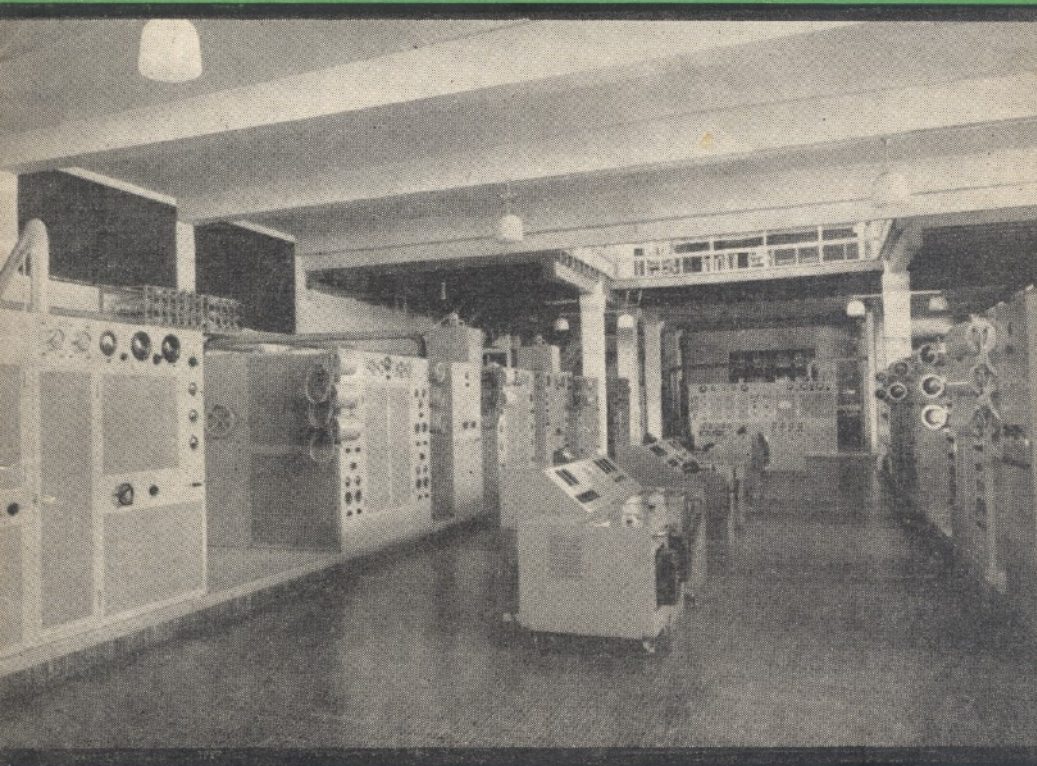


SHORT WAVE *News*

Vol. 6
Number 12
DECEMBER
1951



19

*Season's Greetings
to all our Readers*



Short Wave News

Vol. 6 No. 12

Annual Subscription 21/-

December 1951

Editorial Offices

&

Advertising

- 57, Maids Vale, Paddington, London, W.9

Tel. CUNningham 6518

Contents

The Problem of Man-made Interference. J. H. Evans - - -	706
DX Countries. Fanning Island. J. C. Symes - - - -	708
Channel Crossing by Radio Controlled Model Launch -	710
Short Wave Receiver Design. Pt. 7. C. Summerford - - -	711
Better Broadcast Reports. A. C. V. Seymour - - -	712
Swedish Radio, by Roy Patrick - - - - -	714
Modifications to an 'S640' Pt. 2	716
On the Higher Frequencies. H. E. Smith, G6UH- - -	718
Broadcast Bands Review - - -	723
Around the Shacks. G2VV - - -	726
Amateur Band Commentary, by "QUA" - - - - -	727

Editorial

I. S. W. L.

It has always been our hope that we would one day be able to launch the ISWL off on its own course, so that it was quite independent of this journal. It is a bad policy to have any such organisation tied to a commercial project, because the criticism can very justly be made that the organisation is being run to stimulate interest in the commercial concern's products. In actual fact, this magazine has sponsored the ISWL very heavily during the past few years. Particularly was this so in its early days. As a result of this practical help, the ISWL is now in a very strong position.

A few months ago, the ISWL committee was formed and we now feel that the time is ripe for the ISWL to stand on its feet as an independent organisation which is not in any way tied to a commercial concern. It can then manage its own affairs and finances and can become a truly independent organisation.

Full details appear in these pages, so present and prospective members are asked to read them. We believe that this policy will meet with the approval of the majority of the ISWL members, who we know are anxious to have a hand in 'paddling their own canoe' now that it has been well and truly launched.

A.C.G.

OUR COVER PHOTO shows part of the Swiss Broadcasting Corporation S.W. transmitter hall at Berne.



International Short Wave League

(FOUNDED 1946)

ANNUAL SUBSCRIPTION 2/6 (USA \$0.40)

ENTRANCE FEE 1/-

FUTURE ARRANGEMENTS

From the announcement in the last issue and the Editorial contained in this, League members will by now be aware that the ISWL, after some negotiations with the Directors of the Amalgamated Short Wave Press Ltd., became an independent organisation on the 1st of December.

It has always been the intention, both of the Company and those responsible for various League activities, to launch the ISWL on a completely independent course as soon as conditions permitted such action; and as the League is now by far the largest and most active of SWL Societies in the world, the time has at last arrived when such a move is possible. Most members will welcome the event but we would remind all concerned that we all owe a very great deal to the Company which not only gave the ISWL birth, but also financially sustained the League for many years, and we should like to record here, our thanks to Arthur C. Gee G2UK, C. W. C. Overland G2ATV and J. Burrows not only for their interest but also for the work they have carried out in the interests of the ISWL. Appreciation is also expressed for the great amount of stock and equipment which has been handed over as part of the transfer arrangements.

FUTURE ARRANGEMENTS

Members are asked to read the following paragraphs carefully and to make a note of the addresses, etc., together with the accompanying instructions.

The League is to publish and produce its own monthly magazine aptly named 'MONITOR'. This will be in duplicated booklet form and will be published during the first week of each month. Annual subscription will be 8/- while that for six months will be 4/- post free. Sample copies may be obtained at 9d. each post free. It is stressed however, that members are not compelled to subscribe

to the magazine in order to retain membership of the League, thus arrangements remain much the same as hitherto. The subscription list to the magazine will, however, be limited, and members wishing to place an order are advised to do so without undue delay.

All League Services will, of course, continue to function as at present, as also will the many Groups now in being.

All League officials will continue in their present positions and any changes will, of course, be announced in the 'MONITOR' as they occur.

The address of ISWL HQ as from the change over date (Dec. 1st), will be ISWL HQ, 123, Sturla Road, Chatham, Kent, to which **ALL COMMUNICATIONS MUST BE SENT EXCEPT THOSE OF THE QSL BUREAU.** The Bureau address is:—ISWL QSL BUREAU, 86, Barrenger Road, London, N.10.

League membership fee will remain at 2/6d. per year which entitles members to the free use of all Services, including the QSL Bureau, and this, together with the magazine subscription of 8/-, would mean that for the very reasonable outlay of 10/6d. per year, full participation in the League activities, SLPs, contests, services and the latest news of ISWL affairs, amateur and broadcast bands, etc., would be assured.

New members joining the League will be required to pay an additional 1/- entrance fee.

TO ALL LEAGUE MEMBERS

We require your interest and support with regard to the ISWL magazine, and would welcome Group Notes, Amateur and Broadcast Band Dx notes, together with any other items of interest to other League members. These should be sent to ISWL HQ by the 14th December to be in time for the first edition of 'MONITOR'. **HELP US TO HELP YOU—SUPPORT THE ISWL.**