

# INTERNATIONAL



# RADIO NEWS

OFFICIAL ORGAN OF

THE INTERNATIONAL SHORT WAVE RADIO LEAGUE

---

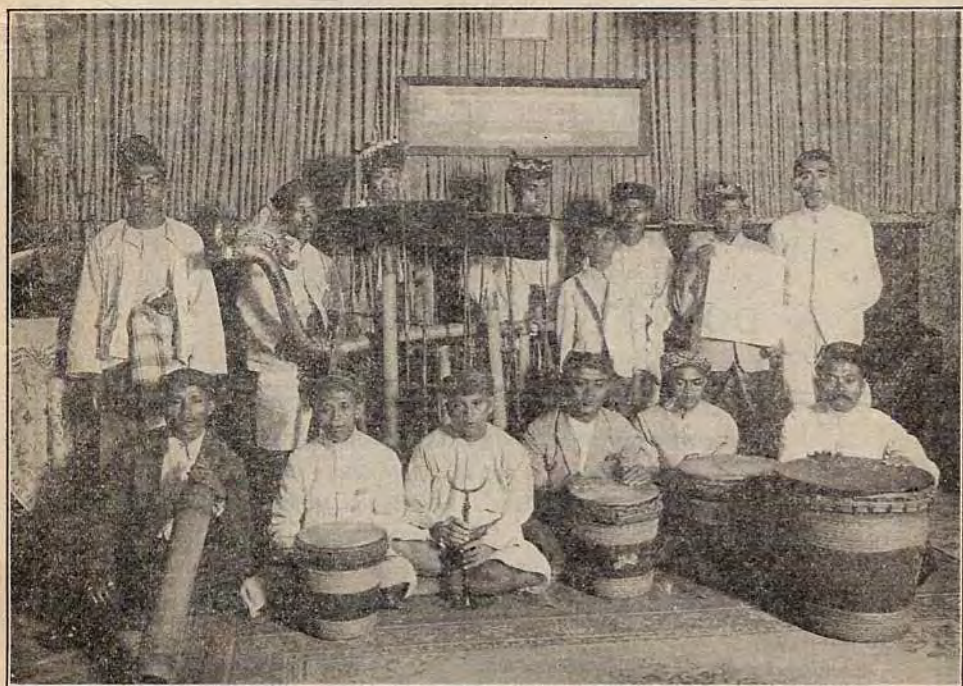
---

NOVEMBER, 1930

10 CENTS

---

---



Group of Native Musicians Broadcasting from the Studios of PLE at Bandoeng, Java.

# INTERNATIONAL SHORT WAVE RADIO NEWS

VOL. I                      CONTENTS FOR NOVEMBER, 1930                      NO. 1

	<i>Page</i>
Cover: Native Musicians Broadcasting from PLE	
Editorial.....	3
Java, "The Isle of Short Waves".....	4
Advancement Made in French Radio-Telephony.....	5
International Time Conversion Table.....	6
International Broadcasts.....	7-11
Address Section.....	11
Short Wave Flashes.....	12

IN THE DECEMBER ISSUE

## Short Wave Broadcasting in Scandinavia

NORWAY                      SWEDEN                      DENMARK

SHORT WAVE FLASHES  
INTERNATIONAL BROADCASTS

And many interesting articles

## DO NOT MISS THIS ISSUE

INTERNATIONAL SHORT WAVE RADIO NEWS

is published on the 10th of each month by the

International Short Wave Radio League,                      Boston, 30, Massachusetts, U. S. A.  
Clifford J. Daly, *President*                      Mander Barnett, *Vice-President*  
Mary G. Thompson, *Secretary*

Subscription rates in the United States and all other countries of the world \$1.00 per year. This includes one year's membership in the International Short Wave Radio League. Single copies 10 cents.

Remittances should be made by international postal or express money order or bank draft negotiable in the U. S. and for an equivalent amount in U. S. funds. Remittances from Europe should be sent to the European Headquarters, 106 Lord St., Southport, England.

Copyright 1930 by The International Short Wave Radio League

# GREETINGS; SHORT WAVE LISTENERS OF THE WORLD

In this, the first issue of International Short Wave Radio News, we wish to extend friendly greetings to every member of the International Short Wave Radio League and to short wave listeners everywhere. While we fully appreciate this first issue represents a very humble beginning we are encouraged to offer it feeling that with the hearty support of our members it is destined to become something very much worth while as time goes on.

International Short Wave Radio News, as members know, is the official organ of our International Short Wave Radio League. The purpose of International Short Wave Radio News is to further our common interests in short wave radio reception. It plans, for example, to spread all available information with regard to activities of the League and the broadcasting stations in whose countries its members reside.

In executing this mission, International Short Wave Radio News proposes to print feature stories concerning prominent short wave broadcasters in all parts of the world. These stories whenever possible will be illustrated with interesting photographs. The first in a series of these articles appears in the present issue and is entitled, "Java, the Isle of Short Waves."

Complete and accurate schedules of short wave broadcast transmissions also will be printed and an earnest endeavor will be made to aid listeners in identifying programs of uncertain origin. If in doubt as to the identity of a station heard it will only be necessary to write this magazine and, through our wide-spread membership, in the majority of cases the information sought will be forthcoming.

Other aids for the short wave listener will be included in the magazine from time to time as the wishes of our members dictate. May we call your attention in this issue to the helpful time conversion table by means of which it is possible to quickly convert Greenwich Meridian Time to the time obtaining in your particular locality. This is an example of the type of material which we think might be properly classified under helpful "aids for the short wave listener", and which we plan to print.

At all times we hope that the membership will feel at liberty to offer suggestions which will guide us in supplying exactly the kind of information most desired. Contributions of pictures and stories will also be gladly received.

This mention of contributions reminds us of an announcement which we feel should be made concerning the publication of International Short Wave Radio News at the outset. Our magazine does not solicit contributions of money; but it does solicit your whole-hearted support and cooperation in providing it with news and information for general distribution to the membership through the medium of its pages. Please bear in mind that International Short Wave Radio News has no paid staff of news gatherers and must depend solely upon the membership of the League for the material which it prints. It is, therefore, up to each member to contribute everything he can to promote the growth and value of the magazine for the benefit of all.

The outlook this year for short wave reception is brighter than in any previous year in its development. We have before us the best months for enjoying this international pastime so let's all put our shoulders to the wheel and give International Short Wave Radio News a boost that will send it spinning around the world.

**WE ARE COUNTING ON YOU. LET'S GO!**

## JAVA "THE ISLE OF SHORT WAVES"

LONG before the listeners of modern countries entered the short wave era the people of Java found in short waves a solution to the difficulties imposed by heavy tropical static and other interferences. Even before the war the authorities occupied themselves in solving the problem of independent communication with the Netherlands. When the war came and regular cable facilities were disrupted a reliable wireless service proved the way out of a very pressing difficulty.

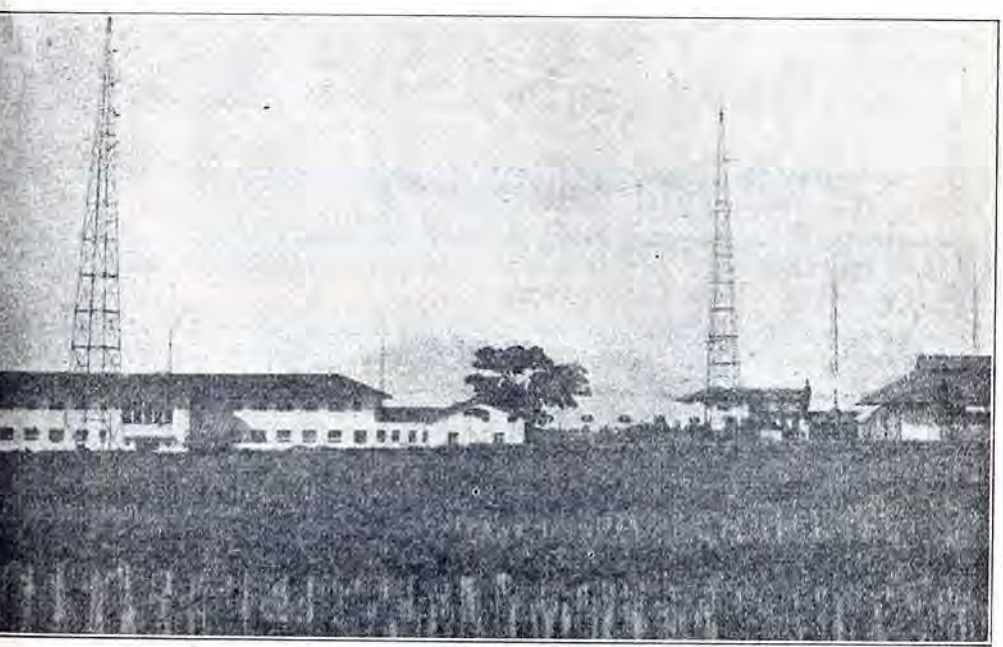
The name of the late Dr. de Groot will always be remembered with gratitude by the people of these islands, because it was through his persistent efforts that such a service was established. He succeeded, in the face of enormous difficulties, in achieving in the year 1919 satisfactory communication with Holland, thereby covering a record distance of some 8,000 miles with wireless apparatus which has been constructed in the tropics under his own supervision.

The station which established this record was the well-known long wave station of Malabar which employs the largest energy of any wireless station in the world, namely 3,600 kilowatts. By means of "Malabar" telegraphic communication was made possible between Java and the Netherlands, Germany, France, the United States, Saigon, the Philippines and vessels at sea.

In 1926, shortwave wireless developed, and the Government services in the Dutch East Indies co-operated with private enterprise in Holland with the result that in 1927, the first two-way telephonic conversation between the new Malabar short-wave station and the Philips station at Eindhoven, in Holland, took place. Soon afterwards, Dr. de Groot died, on his way to the International Radio Conference at Washington. His important services have recently been commemorated by a memorial which was unveiled at the beginning of this year at Bandoeng.

Inspired by the work of this famous pioneer, the radio amateurs of Java have worked unceasingly to develop short-wave radio in the island. They have organized societies in the principal towns and each society provides a broadcasting service for the benefit of its members. In the majority of cases the society owns its own transmitter.

Such societies are in existence at Batavia, Bandoeng, Sourabaya, Djocjacarta, and Malabar, the membership in each town varying from a few to several hundred. This enthusiasm for wireless has spread from Java to the neighbouring islands, with the result that radio societies have also been formed at Macassar, (Celebes), and Palembang (Sumatra). Following is a list and schedule of the various government and society transmitters in the Dutch East Indies.



Station, PLE, Bandoeng, Java. Ricefields in the foreground, and Mount Malabar in the distance.

### SOCIETY TRANSMITTERS

Call	Wave-length meters	Location,	Power*	Schedule
PMY	58.00	Bandoeng, Java	1 kw.	6.40 to 9.40 am. (E.S.T) daily (11.40 to 14.40 G. M. T.)
PK1AA	75.00	Weltevreden, Java	0.6 kw.	" " " "
PK3AN	49.70	Sourabaya, Java	0.5 kw.	" " " "
PK2AF	50.00	Djocjacarta, Java	0.3 kw.	" " " "
PK6KZ	25.50	Macassar, Celebes	0.3 kw.	" " " "
PK2AG	95.00	Samarang, Java	0.3 kw.	" " " "

### GOVERNMENT TRANSMITTERS

PMC	16.50	Tjimindi, Java	60 kw.	One or two of these stations are operated simultaneously except Sundays and Holidays from 5 to 10 a.m.(E.S.-T.) (11.15 G. M. T.) with telephony service to Holland, etc. PLE broadcasts Tuesdays from 8.40 to 10.40 a.m (E.S.T). (13.40 to 15.40 G. M. T.)
PLW	36.90	Malabar, Java	80 kw.	
PLR	28.80	Malabar, Java	40 kw.	
PLF	16.80	Malabar, Java	40 kw.	
PLE	15.93	Bandoeng, Java	80 kw.	
PMB	14.56	Malabar, Java	80 kw.	

\*Due to the thirst for "power" most of the society transmitters will triple their power within a short time.

The latest development in broadcasting in the islands is a contemplated chains of station which will be connected by wire telephone in much the same manner as the broadcasting networks in the United States. Already special telephone lines have been laid connecting Bandoeng and Batavia, and it is expected that within another year full chain facilities will be in operation in the islands, under the guidance of a semi-official body, which is to have a monopoly on terms to be approved by the Government. The license fee, which at the moment amounts to eight florins a year (\$3.50) will then be increased. Membership in a radio society, which at present is quite voluntary, may then be compulsory.

Receiving conditions in Java are not very good. The best reception came from PHI, Huizen Holland which was recently closed due to political difficulties. PJC at Eindhoven, Holland, is now the most reliable station. The British station, 5SW at Chelmsford, is received very faintly and due to the fact it is overnight few listen to it. The American stations 2XAD, 2XAF, and others can be received only during a few months of the year from 5 to 7 am.

Other stations such as Tokio, Perth, Manilla, Singapore, Khabarovsk, Sydney, Saigon, Bangkok and Nauen have no regular schedule; and their power is very often insufficient for constant reception.

## RAPID ADVANCEMENT MADE IN FRENCH RADIO-TELEPHONY SERVICE

The French Deal Beach or Rugby is located at Ste. Assise, a suburb of Paris. Since the inauguration of radio-telephony service with the Argentine last February rapid advancement has been made due to the efforts of the Societe Francaise Radio-Electrique. Recently service was inaugurated with Rio de Janeiro, Brazil. It is now possible to get in touch with any point of South America from any locality in Europe via Ste. Assise. The following is a list of the stations and waves employed.

FTD	15.12	Data unavailable
FRO-FRE	15.45	" "
FTM	15.50	Daily 10 a.m. to 5 p.m.E. S. T. (15 to 22 G.M.T.) to Buenos Aires and Rio de Janeiro
FTO-FTE	16.44	Daily 3 to 4 a.m. E. S. T. (8 to 9 G. M. T.) to Saigon, Indo China
FTN	24.46	Data unavailable
FQO-FQE	24.67	" "
FTL	30.15	" "
FTF	38.61	" "

The reason two sets of calls are employed by some of the stations is to tell when the beam is directed east (FRE) and west (FRO). The energy radiated is 15 kw. The stations are connected by cable to Brussels, Amsterdam, London and Berne.

# HOW TO USE THE SCHEDULES OF INTERNATIONAL BROADCASTS

In order to print schedules of international broadcasts it is necessary, owing to the difference in time in various parts of the world to choose a standard that is recognized throughout the world. This standard is Greenwich Meridian Time, abbreviated G. M. T. This is sometimes referred to as Greenwich Civil Time, abbreviated G. C. T.

In the following table of schedules all periods of broadcasting are given in G. M. T. In order to tell in terms of your local time the periods of these broadcasts it will be necessary to change the G. M. T. listing to your local listing. This may be quickly done by either adding or subtracting the hours opposite the respective countries in the accompanying table to or from G. M. T. time listings, for example:

PCJ broadcasts, Wed., 22.00 to 2.00, Thurs., 18.00 to 20.00, Fri., 1.00 to 4.00 and 19.00 to 21.00, Sat., 1.00 to 7.00. In other words, Wed., from the 22nd hour of the day or 10 pm to the 2nd hour of the day or 2 am. Thurs., from the 18th hour or 6 pm to the 20th hour or 8 pm. Fri., from the 1st hour or 1 am. to the 4th hour or 4 am and from the 19th hour or 7 pm to the 21st hour or 9 pm. Sat., from the 1st hour or 1 am to the 7th hour or 7 am.

By consulting the following table a listener in New York will find that in order to obtain Eastern Standard Time it is necessary to subtract 5 hours from G. M. T. and a listener in California 8 hours. On the other hand a listener in Sydney will find that he is 10 hours in advance of G. M. T.

The New York listener will go about it thus:—

Wed., 22.00 to 2.00 or 10 pm to 1 am minus 5 hours = 5 to 9 pm E. S. T. Thurs., 18.00 to 20.00 or 6 to 8 pm minus 5 hrs. = 1 to 3 pm E. S. T. Fri., 1.00 to 4.00 or 1 to 4 am minus 5 hrs. = Thurs., 8 to 10 pm E. S. T., and 19.00 to 21.00 or 7 to 9 pm minus 5 hrs. = Friday 2 to 4 pm E. S. T. Sat., 1.00 to 7.00 or 1 to 7 am minus 5 hrs. = 8 pm Friday to 2 am Sat., E. S. T.

To obtain local time in the following countries add the hours opposite to the G. M. T. listing.

Holland	0.20
Norway	1.
Sweden	1.
Denmark	1.
Germany	1.
Poland	1.
Austria-Hungary	1.
Switzerland	1.
Czechoslovakia	1.
Italy	1.
Central Africa	1.
Finland	2.
Roumania	2.
Russia (European)	2.
Egypt	2.
South Africa	2.
British East Africa	2.30
Madagascar	3.
India	5.30
Ceylon	5.30
Calcutta, India	5.53
Sumatra	6.42
French Indo-China	7.
Siam	7.
Java	7.20
Surabaya, Java	7.57
Philippines	8.00
West Australia	8.
Hong Kong, China	8.
Shanghai, China	8.
Borneo	8.20
Celebes	8.30
Khabarovsk, Siberia	9.
Japan	9.
South Australia	9.30
New South Wales	10.
Sydney, N. S. W.	10.
Victoria	10.
Queensland	10.
New Zealand	11.30
Fiji Islands	12.

To obtain local time for the following countries subtract the hours opposite from the G. M. T. listing.

England	0.
Portugal	0.
Spain	0.
Belgium	0.
France	0.
Morocco	0.
French West Africa	0.
Algeria	0.
West Africa	1.
Azores	2.
Eastern Brazil	3.
Uruguay	3.30
Labrador	3.31
Paraguay	3.37
Dutch Guiana	3.40
British Guiana	3.45
Central Brazil	4.
Nova Scotia	4.
French Guiana	4.
West Indies	4.
Argentina	4.
Bermuda	4.19
Bolivia	4.33
Haiti	4.40
Colombia	4.57
Eastern Standard Time	5.
Cuba	5.
Chile	5.
Panama	5.
Quito, Ecuador	5.14
Quayaquila, Ecuador	5.19
Nicaragua	5.45
Central Standard Time	6.
Honduras	6.
Costa Rica	6.
Mountain Time	7.
Mexico	7.
Pacific Standard Time	8.
Alaska	10.
Hawaii	10.30
Samoa	11.30

# INTERNATIONAL BROADCASTS

WAVE LENGTH (METERS)	CALL	LOCATION	OPERATING TIME
11.55	G5SW	Chelmsford, England.	Irregular Relays KDKA
13.928	W8XK	E. Pittsburgh, Pa.	
13.979	W2XAL	Coytesville, N. J.	
14.01	WLO	Ocean Township, N. J.	Telephony to LSM, Buenos Aires-Argentina
14.06	DIV	Nauen, Germany	Telephony
14.5	LSH	Buenos Aires, Argentina	Telephony
14.65	PMB	Malabar, Java	Telephony daily 10.00 to 15.00
14.83	DGW	Nauen, Germany	Telephony
15.04	DIH	Nauen, Germany	Telephony
15.07	LSG	Buenos Aires, Argentina	Telephony, daily, to Ste. Assise, 15.00 to 22.00
15.12	FTD	Ste. Assise, France	Telephony
15.14	WMI	Deal, New Jersey	Telephony to GBU, Rugby, England.
15.2	EAQ	Madrid, Spain	Telephony
15.3	DFA-DIH	Nauen, Germany	Telephony
15.45	FRO-FRE	Ste. Assise, France	Telephony
15.5	PCP	Kootwijk, Holland	Telephony
15.5		Nancy, France	Daily, 21.00 to 22.00, news, records, weather.
15.5	FTM	Ste. Assise, France	Telephony daily, 15.00 to 22.00 to Buenos Aires and Rio de Janeiro.
15.5	VK2ME	Sydney, Australia	Telephony and Broadcast, irregular
15.57	PPU	Rio de Janeiro, Brazil	Telephony daily 15.00 to 22.00 to Ste. Assise.
15.61	WNC	Ocean Township, N. J.	Telephony to GBU, Rugby
15.68	PCO	Kootwijk, Holland	Telephony
15.85	XDA	Mexico City, Mexico	Telephony
15.93	PLE	Bandoeng, Java	Telephony daily 10.00 to 15.00 Broadcasts, Tuesdays 13.40 to 15.40
16.10	GBU	Rugby, England	Telephony to WMI, Deal, N. J.
16.12	PDM	Kootwijk, Holland	Telephony
16.3	PCK	Kootwijk, Holland	Telephony to Java from 10.00. Broadcasts at 16.00
16.32	FZA	Saigon, Indo-China	Telephony to Ste. Assise from 18.00. Broadcasts, Sund. 18.00 to 20.00
16.36	GBS	Rugby, England	Telephony to WND, Ocean Township
16.36	WND	Ocean Township, N. J.	Telephony to GBS, Rugby
16.44	FTO-FTE	Ste. Assise, France	Telephony to Saigon, daily 8.00 to 9.00
16.5	CGA	Drummondville, Quebec	Telephony to GBK, Bodmin
16.54	GBW	Rugby, England	Telephony to WNC, Ocean Township
16.5	PMC	Tjimindi, Java	Telephony, daily, 11.00 to 15.00
16.57	GBK	Bodmin, England	Telephony to CGA, Drummondville
16.6	PCS	Kootwijk, Holland	Telephony
16.61	KQJ	Bolinas, Calif.	Telephony
16.8	PLF	Malabar, Java	Telephony, daily 11.00 to 15.00
16.82	PCV	Kootwijk, Holland	Telephony to Java, 20.00 to 2.00
16.873	W8XK	E. Pittsburgh, Pa.	Relays KDKA
17.10	G2IV	SS "Majestic"	Telephony
18.1	G2AA	London, England	Telephony to ships
18.3	G2GN	SS "Olympic"	Telephony
18.37	VLK	Sydney, Australia	Telephony to England
18.4	PCL	Kootwijk, Holland	Telephony to Java, daily, 10.00 to 14.00. Broadcasts Sat. 13.40 to 14.00
18.44	WLO	Ocean Township, N. J.	Telephony to LSM, Buenos Aires
18.5	FZR	Saigon, Indo-China	Telephony to Ste. Assise
18.76		Saigon, Indo-China	Telephony to Ste. Assise
19.	EAJI	Barcelona, Spain	Irregular, relays Buenos Aires.
19.5	FSBZ	Paris, France	Telephony to ships
19.557	W2XAD	Schenectady, N. Y.	Relays WGY, daily except Sat., 18.00 to 20.00

INTERNATIONAL BROADCASTS (Continued)

19.673	W2XAL	Coytesville, N. J.	Relays KDKA, Tues., Thurs., Sat.
19.724	W8XK	E. Pittsburgh, Pa.	Sun., 13.00 to 17.00
19.99	CM6XJ	Central Tuinuca, Cuba	Telephony to WLO, Ocean Township
20.	LSJ-LSM	Buenos Aires, Argentina	and Madrid, Spain
20.	IAY	Picaneza, Italy	Irregular
20.5	XDA	Mexico City, Mexico	Daily, 19.30 to 20.00
20.56	WMI	Deal, N. J.	Telephony to GBU, Rugby
20.73	WNC	Ocean Township, N. J.	Telephony to GBW, Rugby
20.77	GBW	Rugby, England	Telephony to WNC, Ocean Township
20.79	VPD	Suva, Fiji	Irregular, 3.00 to 12.00
20.9	G2NM	Sonning-on-Thames, England	Sund., 17.30 to 19.30, Weekdays, 10.00 to 11.00
21.5		Bucharest, Roumania	Wed., Sat., 19.00 to 22.00
21.59		Mombas, Kenya	Telephony to ships
22.14	F8BZ	Paris, France	Telephony to GBS, Rugby
22.2		Vienna, Austria	Telephony
22.4	WND	Ocean Township, N. J.	Telephony
22.58	G2IV	SS "Majestic"	Telephony
23.		SS "Hamburg"	Telephony to Spain
23.35		Buenos Aires, Argentina	Telephony
24.	G2GN	SS "Olympic"	Relays Rabat, Tues., Thurs., Sat., 13.00 to 14.00. Telephony to Buenos Aires and Saigon, 9.00 to 11.00
24.		Rabat, Morocco	Telephony
24.23	G2GL	SS "Homeric"	Telephony to WMI, Deal, N. J.
24.41	GBU	Rugby, England	Telephony
24.46	FTN	Ste. Assise, France	Relays KZRM, daily except Sunday 10.00 to 14.00
24.5	KAIXR	Manila, Philippine Islands	Telephony
24.57	FQO-FQE	Ste. Assise, France	Telephony to WND, Ocean Township
24.69	GBS	Rugby, England	Telephony to FTN, Ste. Assise, daily, 10.00 to 11.00 and 16.00 to 17.00
24.98	FZR	Saigon, Indo-China	Telephony
25.	PCR	Kootwijk, Holland	Daily, 13.00 to 14.00; 20.00 to 21.00 and 23.00 to 2.00
25.		Porto, Portugal	Relays KDKA, Tues., Thurs., Sat., Sund., 17.00 to 22.00
25.25	W8XK	E. Pittsburgh, Pa.	Tests between 11.00 and 14.00
25.36		Calcutta, India	Relays Rome daily from 19.00
25.4	I3RO	Cecchignola, Rome, Italy	Daily, 11.40 to 14.40
25.42	W2XAL	Coytesville, N. J.	Relays G5XX daily except Sat., and Sund., 12.30 to 13.30 and 19.00 to 0.
25.5	PK6KZ	Makassar, Celebes	Telephony
25.53	G5SW	Chelmsford, England	Telephony
25.62	DDDX	SS "Bermen"	Telephony to GBK, Bodmin
25.685	K1O	Kahauku, Oahu, Hawaii	Relays KZRM, 4.15 to 5.15: 7.00 to 9.00: 10.00 to 15.00
26.	CGA	Drummondville, Quebec	Telephony, Broadcasts, Frid., Sat., Sund., from 22.00
26.1	KAIXR	Manila, Philippine Islands	Experimental
26.22	DHA-DHC	Nauen, Germany	Mon., Thurs., 22.30 to 0.
26.7	IBDX	SS "Elecra" Genoa Bay, Italy	Sund., Wed., 16.30 to 22.30
27.		Leiningrad, U. S. S. R.	Telephony to England
27.	OUTH	Vienna, Austria	Telephony
27.27		Poznan, Poland	Telephony to Australia
27.3	ZLW	Wellington, New Zealand	Daily, 10.00 to 19.00
27.5	PCP	Kootwijk, Holland	Telephony to LSM, Buenos Aires
27.5	GBX	Rugby, England	Telephony and Broadcast
28.	VAS	Glace Bay, Nova Scotia	
28.44	WLO	Ocean Township, N. J.	
28.5		Leiningrad, U. S. S. R.	
28.5	VK2ME-VLK	Sydney Australia	

INTERNATIONAL BROADCASTS (Continued)

28.75	VS6WX	Singapore, Straits Sett	Irregular
28.8	PLR	Malabar, Java	Telephony daily, 11.00 to 15.00
28.98	LSN	Buenos Aires, Argentina	Daily, 2.00 to 4.00, gramophone records
29.	PCT	Kootwijk, Holland	Telephony
29.47	DHC	Nauen, Germany	Telephony
29.5	HS2PJ	Bangkok, Siam	Mon., Wed., Sat., 1.00 to 4.00
29.7		"Paris Experimental Radio"	Daily 19.30 to 21.00. Sunday, 15.00
29.98	CM2LA	Habana, Cuba	Telephony to WMI, Deal, N. J.
30.15	GBU	Rugby, England	Telephony
30.15	FTL	Ste. Assise, France	Telephony to WLO, Lawrence, N. J.
30.3	LSN	Buenos Aires, Argentina	Telephony to GBU, Rugby
30.39	WMI	Deal, N. J.	Telephony
30.4	EAQ	Madrid, Spain	
30.5	JFAB	Taipek, Formosa	
30.5	NRH	Heredia, Costa Rica	Daily, 22.00 to 23.00 and 2.00 to 3.00
30.64	GBW	Rugby, England	Telephony to WNC, Ocean Township
30.75		Agen, France	Relays, Toulouse daily, 13.30 to 19.30
30.77	WNC	Ocean Township, N. J.	Telephony to GBW, Rugby
31.		Buenos Aires, Argentina	Telephony
31.28	VPD	Suva, Fiji	Telephony
31.28	W3XAU	Philadelphia, Pa.	Daily except Thurs. and Frid., 21.00 to 5.00
31.28	VK2ME	Sydney, Australia	Relays 2BL-2FC, irregular
31.28	PCJ	Eindhoven, Holland	Wed., 22.00 to 2.00; Thurs., 18.00 to 20.00: 22.00 to 23.00 (fortnightly)
31.35	W1XAZ	Springfield, Mass.	Frid., 1.00 to 4.00 and 19.00 to 21.00: Sat., 1.00 to 7.00
31.38		Zeezen, Germany	Relays WBZ-A daily, 12.30 to 4.00
31.4	KAIXR	Manila, Philippine Islands	Relays Konigusterhausen generally from 13.00 to 0.30
31.4	ZL2XX	Wellington, New Zealand	Relays KZRM
31.48	W2XAF	Schenectady, N. Y.	Relays WGY daily, 22.30 to 4.00
31.6	OXY	Lynby, Denmark	Relays Copenhagen daily, 20.55 to 21.15 and 22.00 to 23.00
32.	XDA	Mexico City, Mexico	Daily, 21.00
32.		Belgrade, Yugoslavia	Mon., 20.00 to 21.00
32.	VK3UZ	Melbourne, Australia	
32.	HB9XD	Zurich, Switzerland	Daily, 22.00 to 2.00
32.06	CM2MK	Habana, Cuba	Telephony to GBK, Bodmin
32.128	CGA	Drummondville, Que.	Telephony to CGA, Drummondville
32.4	GBK	Bodmin, England	Time sigs. 8.56 and 20.56. Broadcasts irregular, 22.00 to 0.
32.5	FLJ	"Eiffel Tower," Paris, France	Telephony to GBS, Rugby
32.71	WND	Ocean Township, N. J.	Irregular, around 2.00
32.8	SUS	Cairo, Egypt	Daily, 11.30 to 22.00
32.85	HB9OC	Berne, Switzerland	Telephony to WND, Ocean Township
33.26	GBS	Rugby, England	Sund and Wed., 16.30 to 22.00
33.7		Poznan, Poland	Telephony to WOO, Deal, N. J.
33.98	WSBN	SS "Leviathan"	Daily, 22.00 to 0 and 4.00 to 6.00
34.5	HKF	Bagota, Colombia	Telephony to ships
34.76	WOO	Deal, N. J.	Telephony
35.	G2GN	SS "Olympic"	Telephony
35.2	G2IV	SS "Majestic"	Telephony
35.54	G2AA	London, England	Telephony to ships
36.	RV3KAA	Leiningrad, U. S. S. R.	Mon., Tues., Thurs., Frid., 7.00 to 11.00
36.47		Mombas, Kenya	Telephony daily, 11.00 to 15.00
36.9	PLW	Malabar, Java	
37.	RVI9	Tomsk, Siberia	
37.2	OUTH	Vienna, Austria	Mon., Thurs., 21.30 to 23.00
37.82	HS4PJ	Bangkok, Siam	Tues., 13.00 to 16.00 and 19.00 to 21.00
38.	VPD	Suva, Fiji	Frid., 13.00 to 16.00
38.08	J1AA	Tokyo, Japan	Telephony
38.3	PCV	Kootwijk, Holland	Telephony, daily after 14.00
38.56	F8BZ	Paris, France	Telephony to ships
38.61	FTF	Ste. Assise, France	Telephony
38.8	PCL	Kootwijk, Holland	Telephony to Java, 14.00 to 0.

INTERNATIONAL BROADCASTS (Continued)

39.7	HKF	Bagota, Colombia	Daily, 22.00 to 0. and 4.00 to 6.00
39.7	DDDX	SS "Bermen"	Telephony
40.	EK4ZZZ	Danzig, Free State	
40.		Touraine, France	Irregular, from 21.00
40.2	FYR	"Radio Lyon," Lyons, France	Daily except Sund., 16.30 to 0.30
40.5		Elberswalde, Germany	Mond., Tues., 18.00 to 19.00
40.73	FYA	Pontoise France	
41.	PBF5	Hilversom, Holland	
41.		Moscow, U. S. S. R.	Daily, 12.00 to 12.45
41.	FSLH	"Radio Vitus," Paris, France	Irregular, 21.00
41.5	HB9D	Zurich, Switzerland	1st and 3rd Sund of month, 12.00 to 19.00
41.7		Canary Islands	Testing daily, 22.30
41.7	VK6AG	Perth, West Australia	Irregular, 10.00 to 16.30
42.7	EAR110	Madrid, Spain	Tues., Sat., 22.30 to 0. Frid., 0. to 1.00
42.7	EAR125	Madrid, Spain	Irregular, 23.00 to 0.
42.8	FMSKR	Constantine, Algeria	
43.	CT1AA	Lisbon, Portugal	Friday, 22.00 to 23.15
43.5	IMA	Rome, Italy	Sunday, 17.00 to 19.30
43.6	D4AFF	Koethen, Germany	Sund., 9.00 to 11.00: Tues., Frid., 17.00 to 19.00: Thurs., 21.00 to 23.00
43.6	CN8MC	Casablanca, Morocco	Relays Rabat, Sund., Tues., Wed., Sat., Irregular
43.75		"Radio Vitus," Paris, France	Thurs., 0.15 to 2.15: Sund., 22.45 to 2.15
43.86	VRY	Georgetown, British Guiana	Daily, 1.00
44.	XDA	Mexico City, Mexico	
45.	IAY	Picenza, Italy	
45.21	WSBN	SS "Leviathan"	Telephony
46.	EAR96	Barcelona, Spain	
46.	EAR113	Viscaya, Spain	
46.05	WOO	Deal, N. J.	Telephony to ships
46.6	PCM	the Hague, Holland	Sund., 20.00 to 23.00, dance music
47.	CT3AG	Funchal, Madeira	Thurs., Sat., 22.00 to 1.00
48.		"Radio Maroc," Rabat, Morocco	Mon., Sat., 21.00 to 22.00
48.25	HKC	Bagota, Colombia	Daily except Mond., and Tues., 1.00 to 5.00
48.3	LON	Buenos Aires, Argentina	Telephony
48.62	HRB	Tegucigalpa, Honduras	Tues., Thurs., Sat., Sund., 2.00 to 5.00
48.8	KAIXR	Manila, Philippine Islands	Daily except Mond., 8.00 to 15.00
48.86	WSXK	E. Pittsburgh, Pa.	Relays KDKA, Tues., Thurs., Sat., Sund., 22.00 to 0.
49.	VQ7LO	Nairobi, Kenya	Daily, 16.00 to 19.00. Relays G5SW irregular 19.00 to 22.00
49.		Chi-Hoa, Indo-China	Daily, 0.30 to 2.30
49.	PPU	Rio de Janeiro, Brazil	Daily, 22.00 to 0.
49.		Toulouse, France	Saturday, 19.30
49.02	W2XE	Cross Bay, Long Island, N. Y.	Relays Columbia System, daily, 13.00 to 6.00
49.18	W3XAL	Bound Brook, N. J.	Relays WJZ daily, except Sunday, 23.00 to 0. and 5.00 to 7.00
49.3	VE9GW	Bowmanville, Quebec	Daily, 11.45 to 15.00 and 22.00 to 0 Sund., 17.00 to 0.
49.32	HS2PJ	Bangkok, Siam	Daily, 11.00 to 11.30
49.34	W9XAA	Chicago, Ill.	Relays WCFL daily except Sund., 11.00 to 12.00, daily, 0. to 1.00: 2.30 to 3.15 and 4.00 to 5.00
49.34	W2XCX	Kearny, N. J.	Relays WOR, Newark, N. J.
49.46		Montala, Sweden	Relays Stockholm daily, 11.30 to 12.00 and 16.00 to 21.30. Holidays, 9.30 to 22.00
49.5	VE9CL	Winnipeg, Manitoba	Daily from 23.30. Relays CJRW
49.5	W8XAL	Cincinnati, Ohio	Relays WLW, daily, 11.30 to 16.00: 18.30 to 20.00 and 23.00 to 6.00
49.5	W3XAU	Philadelphia, Pa.	Relays WCAU, daily, 13.00 to 21.00. Thurs., and Frid., 21.00 to 5.00
49.5	W9XU	Council Bluffs, Iowa	Relays KOIL
49.67	W2XAL	Coytesville, N. J.	
49.7	PK3AN	Soerabaya, Java	Daily 11.40 to 14.40
49.83	W9XF	Chicago, Ill.	Relays WENR daily, 17.15 to 18.45: 22.30 to 2.00: 3.00 to 8.00. Sund., 7.00 to 9.00: 15.00 to 19.30: 22.30 to 1.00. Mond., 3.00 to 8.00

INTERNATIONAL BROADCASTS (Continued)

50.	EAR25	Barcelona, Spain	Saturday, 20.00 to 21.00, gramophone records
50.	PK2AF	Djocjacarta, Java	Daily, 11.40 to 14.40
50.		Moscow, U. S. S. R.	Daily, 12.00 to 13.00
51.	CN8MC	Casablanca, Morocco	Sund., Tues., Wed., Sat.
51.4		Barranquilla, Colombia	Daily except Monday, 1.30 to 3.30
55.	F8BP	Rugles, France	Daily 12.00 and 20.00
56.7		Nauen Germany	Irregular from 17.00
58.	PMY	Bandoeng, Java	Daily, 11.40 to 14.40
58.	FYR	"Radio Lyon", Lyons, France	Irregular
58.6	OKIMPT	"Radio Elektra," Prague, Czechoslovakia	Tues., Frid., 19.30 to 21.30
60.		Bratislava, Czechoslovakia	Irregular, 10.00. Relays Prague 19.00 to 21.00
61.	F8GC	"Radio LL", Paris, France	Daily, 11.30 to 23.00
63.12	G2GL	SS "Homeric"	Telephony
65.	G2IV	SS "Majestic"	Telephony
65.	K10	Kauhuku, Oahu, Hawaii	Telephony
68.	OKIMPT	Prague, Czechoslovakia	
68.3	WSBN	SS "Leviathan"	Telephony
70.2	RV15	Khabarovsk, Siberia, U. S. S. R.	Daily, 9.00 to 12.00
70.2	OHK2	Vienna, Austria	Sund., first 15 minutes of the hour from 17.00 to 0.
72.72	G2IV	SS "Majestic"	Telephony
72.98	WOO	Deal, N. J.	Telephony to ships
75.	PK1AA	Weltevreden, Java	Daily, 11.40 to 14.40
80.	FMSKR	Constantine, Algeria	Monday and Friday
80.	FSAV	Nogent, France	
80.	I3RO	Cecchingola, Rome, Italy	Relays Rome
80.		Turin, Italy	Relays Milan-Turin
83.		Moscow, U. S. S. R.	
86.	HB9XD	Zurich, Switzerland	
87.51	WSBN	SS "Leviathan"	Telephony
95.	PK2AG	Semerang, Java	Daily 11.40 to 14.40
96.03	WOO	Deal, N. J.	Telephony to ships
104.		Milan, Italy	Daily, after 19.00
104.5	VK6WF	Perth, West Australia	Irregular, 10.00 to 16.30

ADDRESS SECTION

Persons writing to radio-telephony stations in the United States and England must remember that these transmissions are of a private nature, not broadcasting. While radio listeners in the United States are not required to have licenses to listen in to short wave transmissions, the radio laws of the country prohibit them from revealing the subject or nature of conversations heard.

Following are the addresses of phone and broadcasting stations in several countries:

England: Radio Section, G. P. O., London.

Holland: Radiolaboratorium, 'S-Gravenhage, Parkstraat 29.

France: Societe Francaise Radio-Electrique, 79, Boulevard Haussmann, Paris.

Dutch East Indies: Government Post and Telegraph Dept, Bandoeng, Java.

Argentina: Transradio Internacional, San Martin 329, Buenos Aires.

Indo-China: Boite Postal 724, Saigon.

Brazil: Caixa Postal 500, Rio de Janeiro.

British Ships: International Marine Radio, Connaught House, Aldwych, London.

French Shore to Ship: Standard Lab., 46 de Breteuille, Paris, France.

American phones: American Telephone and Telegraph Co., 24 Walker St., New York, N. Y.

PCJ, Philips Radio, Eindhoven, Holland.

German stations: Reichspostzentramt, Berlin, Tempelhof, 11 Schoneberger, Strausse.

HRB, Tropical Radio Telegraph Co., Tegucigalpa, Honduras.

13RO, Via Dia Conditti, Rome, Italy.

Siamese stations: Royal Siamese Post and Telegraphs Dept., Bangkok, Siam.

HKF, Laboratorio Radio-Electrico, Apartado 317, Bagota, Colombia.

VRY, McInroys Bldg., Georgetown, British Guiana.

VPD, Amalgamated Wireless, Suva, Fiji.

VK2ME-VLK, Amalgamated Wireless, 47 York St., Sydney, Australia.

NRH, Sr. Cespedes Marin, Heredia, Costa Rica.

K1XR-KZRM, Manila Hotel, Manila, Philippine Islands.

G2NM, The Ranch, Sonning-on-the-Thames, Berks., England.

K10, Radio Corp. of America, Kahuku, Oahu, Hawaii.

VE9GW, Gooderham and Worts Ltd., Bowmanville, Ontario, Canada.

We will supply the addresses of any of the other stations upon request.

When writing to stations an international postage reply coupon should be enclosed. These can be purchased at the post office (nine cents each in the United States).

INTERNATIONAL SHORT WAVE RADIO LEAGUE,  
BOX 22,  
BOSTON, 30, MASSACHUSETTS, U. S. A.

I hereby apply for membership in the International Short Wave Radio League and enclose one dollar in payment for one year's dues. This entitles me to receive International Short Wave Radio News for the same period.

Name .....

Number.....Street

City.....

State.....

Country.....

Do you know a friend who listens in on short waves, whose name you might give us so we may send him a sample copy of our organ?

.....  
.....

---

EUROPEAN HEADQUARTERS : 106 LORD ST., SOUTHPORT,  
ENGLAND

## SHORT WAVE FLASHES

Short wave stations have been established at Negombo, Ceylon by the government for sea plane communication. Others are to follow along the coast north of Colombo.

The 3 kilowatt transmitter of JOAK, Tokyo, Japan, now under construction will be completed by the end of the year. Waves employed will then be 25 and 49.31 meters.

PCJ is now transmitting on Wednesdays from 22 to 2 GMT (5 to 9 pm. EST) for the benefit of listeners in the British Colonies in the East as well as for the short wave enthusiasts in the United Kingdom and Central Europe.

The world's most powerful short wave broadcasting station was recently opened at Chi-Hoa, near Saigon, Indo-China, by the Indo-China Films and Cinema Corporation on a wavelength of 49 meters with 100 kw. Chinese music is broadcast between 24.30 and 1 GMT (7.30 to 8-p.m. EST) and classical European music between 1 and 2.30 GMT. (8 to 9.30 P. M.) EST.

The Eiffel Tower, Paris, houses the central transmitter for a system of 51 police radio stations. Photographs and fingerprints are transmitted. The duties of these stations also include listening to foreign transmissions and searching for illicit stations.

The story goes that an Arabian Sheik took a short wave receiver and an installation man many miles by camel into the desert. The gear was erected at the customary oasis, PCJ and a Turkish station came in without fading, and were greeted with delighted shrieks from the crowded harem. Nothing more is said of the installation man.

It is understood that the Hungarian Postal-Telegraphs Department will soon start constructing a short-wave radio-telephony station at Budapest.

The Vienna station, UOR2 which is undergoing reconstruction will be reopened soon. Complete details will be given in our next issue.

Two 20 Kw. transmitters are now under construction in Podedbrady, Czechoslovakia, for communication with the United States. Waves between 15 and 20 meters are to be employed.

The American Railway Association recently revealed that short wave radio will be used to maintain communication between both ends of freight trains.

Mr. N. J. Bluman, President of the English Radio Club of Argentina was called upon to give the English translation of the speech by the President of the new Provisional Government. The next morning several of the club members who recognized his voice called up to congratulate him. They had heard him via 2XAF, Schenectady, N. Y.

How many readers have long wave receivers? A transmitter on 1411 meters is soon to go on the air at Warsaw, Poland, with 158.4 Kw. The antenna masts will be 600 ft. high.

The Chicago Daily News has received a construction permit from the Federal Radio Commission for a 1 kw. station on 49.67 meters. The station, however, will not be opened before the 1933 World's Fair.

The programmes of "Radio-Maroc", Rabat, Morocco are now relayed on 24 meters from 13 to 14 G. M. T. (8 to 9 am. E. S. T.), Tuesday, Thursday and Saturday. On 48 meters, Monday and Saturday from 21 to 22 G. M. T. (4 to 5 pm. E. S. T.) The station can be identified by the call, "Ici Radio-Maroc station de l'Office Cherifen and by the interval signal, sixty beats per minute on a metronome. The station closes down with "Marseillaise". Radio-telephony service to Ste. Assise, Buenos Aires, Algeria and Saigon is carried on from 9 to 11 G. M. T. (4 to 6 am. E. S. T.)

The interval signal of HSIPJ, Bangkok, Siam is 5 notes on a piano. Announcements are made in English, French, Siamese and German.

The announcements at RV15, Khabarovsk, U. S. S. R. are made in Russian, Chinese, and English. The station closes down with "International".

His Holiness, Pius XI, recently paid a visit to the 20 kilowatt short-wave station which has been built in the Vatican Gardens. The Engineer-in-Charge explained to his Holiness the function of the different parts of the transmitting apparatus. It is expected the inauguration will take place soon. The station will operate on 19.84 and 50.26 meters and will be relayed by the 60 kilowatt station at Rome on 444.1 meters. This means, that the 12 kilowatt relay station of Rome will transmit the broadcasts on 25.4 or 80. meters.