

# Short Wave Reporter



## HEAR DELHI!

With the recent inauguration of the new Delhi transmitter heard evenings in the East at 9.59 on the radio dial, many listeners have experienced their first opportunity to log entertainment broadcasts originating in India. Programs open at 9:30 p. m. EST nightly with the tinkling of bells and the striking of the hour of eight (in the morning of the approaching day at Delhi) followed by more than an hour of oriental music. As daylight increases at the point of origin, this radio frequency weakens. If the station has not faded out entirely by 10:40 p. m., announcements in English introducing a news period may be heard.

To the immense good fortune of American listeners, this station whose call appears to be VUD and announced wavelength 31.33 meters (9,575 kc), is heard instead between stations GSC 9.58 and HP5J 9.60 on the dial, opening with excellent strength and gradually tapering off as the hour advances. Should those in charge of this broadcast desire their program to be well received in America, there is every indication that this would be accomplished by opening their broadcast an hour and a half earlier, saving Wednesdays EST when interference from PCJ Hilversum, Holland, would occur.

Of their evening transmission (morning at Delhi) listeners on the Pacific Coast can expect to hear little more than a tremulous carrier with weak modulation as it then reaches us via the longer way round, the difference in time between IST and PST in this direction being  $13\frac{1}{2}$  hours. It is hoped that the tests of VUB Bombay 9,565 kc, scheduled for March, may soon be heard in the West with anticipated peak reception at about one hour after sunrise. The path of darkness essential to distant reception on this frequency will then lie the "shorter way" round, affording the Pacific Coast morning reception on a par with evening reception in eastern United States.

---

SHORT WAVE REPORTER published monthly (excepting July and August) by Quixote Radio Club, Box 772, Santa Barbara, California.  
10 Cents a Copy, \$1 a Year (10 issues).  
Entire contents copyright 1938 by E. J. Shields, Chots.  
Advertising accepted of reputable firms only. Rates on application.

GOVERNMENT OF INDIA.

OFFICE OF THE CONTROLLER OF BROADCASTING.

All communications should be addressed to the Controller of Broadcasting, by title, NOT by name.

Telegrams :—

" CONBROADCAST ".

No. F.11(25)-Eng/38.

Dated New Delhi, the 21<sup>st</sup> September, 1938.

To

L.D.Brewer Esquire,  
2246 N. 9th Street,  
Phoenix, Arizona,  
U.S.A.

Dear Sir,

This is to acknowledge your letter dated the 11th August, 1938, and to confirm your reception report on WUD2 on 9.59 megacycles. I am interested and glad to note that you receive so strong and distinct a signal in the U.S.A. and to state that further reports from you will be appreciated. The question of verification cards has been taken up by All India Radio and we hope, in the near future, to be able to send you QSL verification cards in reply to your reception reports.

Yours faithfully,

*P. B. B. B.*  
Chief Engineer.

# Short Wave Reporter



## HEAR INDIA!

Below will be found the latest broadcast schedules and the new channels now assigned All India Radio. The stations affected are Bombay, Calcutta, Delhi and Madras, the final letter of the station's call being the initial letter of the city in which it is located. In addition to the channels officially listed, Delhi is reported heard opening the 9:30 p. m. EST broadcast on 15,290 kc. In North America the early morning broadcasts may be logged in winter. All time is Eastern Standard, 11½ hours behind Indian Standard Time.

4.840 VUC2	7½-----12		S
	6½-----12		MTWTFS
4.880 VUB2			
	7½-----12½		SMTWTFS
4.920 VUM2			
	6½-----12		SMTWTFS
4.960 VUD2			
	7½-----12½		SMTWTFS
9.530 VUC2		10-----2	S
--4		2---	MTWTFS
9.550 VUB-2		9½10½ 12-----3½	SMTWTFS
4½-----7			SMTWTFS
9.590 VUD-3	7½-----12½		SMTWTFS
9.590 VUD-2		9½---11½ 1½--3¾	SMTWTFS
11.870 VUM2			
3½4			M W F
15.160 VUD-3		9½---11½ 1½--3¾	SMTWTFS

To the QRC, dated Delhi, January 3: "We have to thank you for your letter and the 17 reception reports you have forwarded along with it. We regret your previous letter remains unanswered. Unfortunately our QSL Cards are still in the press. As we believe that the

members of the Quixote Radio Club would prefer these cards over the usual letter verifications, we rather hesitate to forward to you the latter. I wonder if you could wait a little longer, when we shall be in a position to verify your reports with QSL cards."

SHORT WAVE REPORTER published monthly (excepting July and August) by Quixote Radio Club, Box 772, Santa Barbara, California.

10 Cents a Copy. \$1 a Year (10 issues).

Entire contents copyright 1939 by E. J. Shields, Chots.

Advertising accepted of reputable firms only. Rates on application.

# Q.S.L. Card

FROM  
RADIO V.U.B.  
BOMBAY

244

METRES

~~350.9~~

KILOCYCLES

855

9565

TIME USED: Indian Standard Time

61

31. ~~34~~

4905

(which is 5 1/2 hours ahead of Greenwich Mean Time)



GATEWAY OF INDIA

Newby. V. Miner Esq  
of Mass. has heard the above  
Station on 2nd March, '38

W. Banks  
STATION DIRECTOR.

# Short Wave Reporter



## HEAR SINGAPORE!

Being twelve hours and twenty minutes ahead of EST, the Singapore Time Zone approaches the acme of DX (distance) reception for eastern U. S. listeners. The Crossroads of the World now boast of a short wave broadcasting station heard with good program value on the Pacific Coast with excellent possibilities of being logged on the Atlantic. Speech and music are perfectly clear and remarkably steady, with no perceptible fading except that the carrier seems jerky, and, considering that only 400 watts power is used, signal strength is excellent.

The station is ZHP "P for Progress" on an announced wavelength of 30.96 meters or frequency of 9.69 megacycles, in parallel with ZHL "L for Liberty" on 225 meters or 1,333 kilocycles. The time for peak reception in America is during the first hour following sunrise. Usually they are on the air from 4:40 till 9:40 a. m. EST, which, in terms of PST, means that concluding announcements and sign off may be expected at 6:40 a. m. or shortly thereafter. London is relayed from about 5:30 till 6 a. m. PST, followed by dance music or popular recordings, titles of the latter being announced at the opening and close of the period with none between. Reports may be addressed The British Malaya Broadcasting Corporation, Limited, Thomson Road, Singapore, Straits Settlements, British Malaya. Leave is taken much in the style of Daventry, for instance: "Then until 5 o'clock tomorrow evening, good night, every body . . . good night."

Actually ZHP is about 30 kilocycles above COCQ Habana 9.670 (when last observed) and 40 below an unknown French station on 9.740, believed to be the Boy Landry station of Saigon. This latter station leaves the air at 6:15 a. m. PST with the playing of La Marseillaise.

---

SHORT WAVE REPORTER published monthly (excepting July and August) by Quixote Radio Club, Box 772, Santa Barbara, California.

10 Cents a Copy, \$1 a Year (10 issues).

Entire contents copyright 1938 by E. J. Shields, Chots.

Advertising accepted of reputable firms only. Rates on application.

THE BRITISH MALAYA BROADCASTING CORPORATION LTD.



SINGAPORE  
STRAITS SETTLEMENTS



WE ARE PLEASED TO CONFIRM YOUR RECEPTION  
of ZHP - 30.96 metres (9.69 mc/s) on 22nd April 1939.

# Short Wave Reporter



## HEAR BANGKOK!

While Siam may be "just around the corner" it's a good day's journey in whatever boat we may be. No world tour would be complete without visiting its shores. In point of time, the difference between Siamese and Eastern Standard is exactly 12 hours either way it is figured. Yet, on the west coast, listeners may tune in Bangkok with amazingly good reception, considering the distance. This opportunity occurs but once a week, and then only for the brief period of two hours. True there is another broadcast, but it is less favorable for the west coast, being on a higher frequency. Though heard in the east, this broadcast is less consistent.

Our station is the Experimental Short Wave Broadcast Station HS8PJ operating Thursdays from 8 till 10 a. m. EST (5 till 7 a. m. PST) on a frequency of 9,350 kc (32.09 meters) and the same hours Mondays on 19,020 kc (15.77). Bright and early Thursday morning is the broadcast recommended for the Pacific Coast, with peak signal at sunrise. The place on the dial, it will be observed, is near that at which COCH of Habana, Cuba, is regularly heard.

Bangkok programs are divided in several parts, sometimes beginning with a relay of Siamese theater music, followed by the "first recital" of occidental recordings. At 9 a. m. a quarter hour of English News, followed by about a half hour of Siamese "gramophone" records, and concluding with the "second recital" of occidental recordings. Interval signal: Three chimes in ascending scale. Announcements: Siamese, the King's English and French. Reports are desired and will be acknowledged as soon as the staff is able. In signing off, the announcer bids you, "Good health, good luck and a very good night from Siam!"

---

SHORT WAVE REPORTER published monthly (excepting July and August) by Quixote Radio Club, Box 772, Santa Barbara, California.

10 cents a Copy, \$1 a Year (10 issues).

Entire contents copyright 1937 by E. J. Shields, Chota.

Advertising accepted of reputable firms only. Rates on application.

Situation *10032 00 E. 13 N. 30 N.*

Frequency *9.35 mc (21.09 m)*

Oscillator *Crystal controlled*

Power *5 Kw. Output*

Antenna *dipole*

Modulation *grid direct current*

Tubes *RCA 10, 960, 501, 207*

*Telefunken 8V2, 5, 8S207*

Mike *Telefunken 4152 carbon*

Pick-up *RCA*

A.F. ampl. *Resistor*

*0.001*

Owner *Post & Telegraph Dept*

Made of Xmtr. *Home-made*

Hks. \_\_\_\_\_

SCHEDULE OF TESTS

Days *Thursdays*

Time *1300-1500 gmt*

Type of programme *Siam and Euro-*

*pean music, local & radio m.*

*bulletin at 1400 gmt. Announcers*

*in Siamese, English & French.*

*Prof. Pira aram.*

Engineer I/C \_\_\_\_\_



**HS-8PJ**

**THE EXPERIMENTAL RADIO BROADCASTING STATION  
AT SALADENG, BANGKOK, SIAM.**

With thanks we beg to verify correct your report of  
reception dated *March 18<sup>th</sup> 1937*

Further reports will always be appreciated.

*Pira Aram*



# Short Wave Reporter



## HEAR SAIGON!

Or, it might have been more appropriate were we to say, in the vernacular, "try and do it!" Generally it is our practice to suggest a distant station which we believe should be audible although not commonly heard. In this instance listeners on the west coast should be successful but we are less sanguine of eastern reception. The reason is that the signal strength of our station is slightly less than that of CR7BH Lourenco Marques, Mozambique 11.718, and both operate on exactly the same frequency channel. There is one favorable element, however, and that is *time*. Saigon begins operations at an hour earlier than we would care to investigate, by which we mean 5 a. m. EST, and continues until 9:30 a. m.

The first part of the program is oriental and logging it would tax our descriptive powers. The latter part is French, however, with announcements by a lady, and many of the numbers will be recognized. When English announcements occur, it is only at the close of the transmission. Unfortunately, on week-days the carrier of CR7BH comes on the air about ten minutes before Saigon signs off, setting up a severe heterodyne. The opportunity of logging an intelligible English announcement is consequently reduced to Sundays and then they do not always occur. Before the concluding announcement a series of chimes will be heard in a group of eight, twice repeated. With the playing of La Marseillaise we find our efforts to log an announcement must be deferred until another day. For the address, see French Indo-China under Station Data. And for the place on the dial of your receiver, note well the spot at which CJRX Winnipeg is heard the night before, and look in exactly the same spot at dawn the next day. If not found there, then it is useless to look further. May conditions be exceptionally favorable!

---

SHORT WAVE REPORTER published monthly (excepting July and August) by Quixote Radio Club, Box 772, Santa Barbara, California.

10 cents a Copy, \$1 a Year (10 issues).

Entire contents copyright 1937 by E. J. Shields, Chots.

Advertising accepted of reputable firms only. Rates on application.

It should be added that not only must conditions be favorable, but a slight change in frequency on the station's part will be necessary for perfect reception. Conditions the morning of April 19 were excellent, but the heterodyne caused by the carrier of CR7BH ruined intelligibility. Unfortunately we shall not have another opportunity for observation before going to press. On this occasion a man appeared to be giving a long detailed announcement for the benefit of American listeners whose reports he requested sent to Post Office Box 295. The frequency was understood to be announced as 11,702 kilocycles, indicating a correction is in order. On this frequency they would at least escape the heterodyne with CR7BH, although telegraph stations abound within the band. The time announcement was also understood to be 9:30 p. m., the equivalent of 2:30 p. m. GMT, the hour of closing down. The difference of twelve hours between their time and EST indicates maximum DX for eastern listeners.

In stating that conditions were this day excellent, we judge also by the success attending the inauguration of radiotelephone service between Shanghai and San Francisco at 10 a. m. EST over XTB 11.405.

# PHILCO

★ Etab<sup>ts</sup> BOY-LANDRY, Agents exclusifs ★

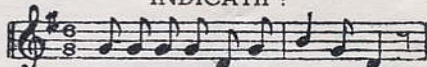
211-213, Rue Catinat, SAIGON

R. C. Saigon N° 88

Ecoutez la Station BOY-LANDRY  
sur 25 et 49 mètres

Tél. { Direction 20.895  
Bureaux 20.623  
Magasin de vente 20.945

INDICATIF :



Saigon, 19th of August 1937

SG.-

D I.-

Mr August BALBI  
1328 Angelus Ave.  
LOS ANGELES, California (U.S.A.)

Dear Sir,

Thank you for your letter of July 18th 1937. Your report checks exactly with our program log, and the information furnished is complete and concise.

We appreciate the information you have given us and wish assure you that we will use it to the best of our ability to continuously improve the quality of our transmissions, and arrange our programs to best suit the cosmopolitan demands of a broadcast station in this part of the world.

Thanking you again, and assuring you that further correspondance is most welcome, we are,

Yours very truly,

M. LEPICARD .

Etablissez  
vos chèques ou  
mandats au nom  
des Etablissements  
BOY-LANDRY  
Saigon



# Short Wave Reporter



## HEAR HONG KONG!

With an all-wave receiver you may now tune in China direct. Until recently this has not been possible with any degree of entertainment, but now anybody should be able to do it. Like all things, it is easy if you know how, and we are glad to tell you in detail. China is distant, if any place is, and this test should show you how well your receiver will perform.

The station is ZBW of Hongkong, operated by the Hongkong Government. Postal address: Box 200.

The time: Mornings from 6 till 10 E.S.T. Listeners on the Pacific Coast should bear in mind that, excepting Saturday mornings, ZBW leaves the air at 7 a. m. P.S.T. Whether you reside on the Atlantic or Pacific Coast, the best time should be just after sunrise, or about 6:30 a. m. your local time.

The place on the dial of your receiver: Either 9.525 megacycles (on the 31 meter band) or 15.190 megacycles (on the 19 meter band). Look first for the following "key stations" and you should find Hongkong right beside them:

### 31 METER BAND

- 9.525 ZBW Hongkong
- 9.530 W2XAF Schenectady
- 9.540 VPD-2 Suva, Fiji

### 19 METER BAND

- 15.190 ZBW Hongkong
- 15.200 DJB Berlin
- 15.210 W8XK Pittsburgh

As W2XAF Schenectady will not be on the air at that time of the morning, you should tune them in the night before and note well the place. Then, bright and early the next morning, look almost in the very same spot and Hongkong may greet you. Or, if they do not happen to be using that channel at the time, they surely will be found on 19 meters on the very

fringe of DJB Berlin. Later W8XK Pittsburgh comes on the air and should serve as a guide to western listeners. There you have the station, the time and the place! May you enjoy Chinese "swing music"! Some days the programs are entirely occidental. If you want local color, tune in Saturday mornings (Saturday nights in Hongkong) and let them "take you" to a Hongkong cabaret. That will be for many a novel treat.

If, by following these directions, you succeed in logging China, do not fail to let us know of your success, and suggest, at the same time, which particular station or country you would like to log next month. It is hoped that such directions may prove helpful to many listeners in finding short-wave entertainment.

# ZBW



# HONG KONG



The Hongkong Broadcasting Station thank you for your communication dated 8th October 1935 and take pleasure in confirming your reception of ZBW on 8th October 1935.

VERIFIED

Secretary, Ina M. Dunne

Hong Kong Broadcasting Committee.

Post Office Box No. 200

NOV 12 1935

# Short Wave Reporter



## HEAR TAIWAN!

Not that you may be spellbound by what you hear, for much of it will be "news" in Chinese, possibly with a Japanese accent, but this station is suggested because not ordinarily a broadcaster. The West Coast audience will be told of Chinese iniquities, recited in English by a lady at 7:15 a. m. PST or thereabouts, this being the final quarter hour of their daily broadcast, begun we know not when. In concluding, this lady informs us we are listening to the Taihoku Broadcasting Station, Taiwan (formerly the Island of Formosa). Then a man discourses briefly in Japanese—whether it be a preview of the next day's program, stock exchange quotations or what, we wot not.

As a musical interlude all Japanese stations frequently use a march with vocal refrain singing the praises, we believe, of youths said to have died for love of country. Should the hour be late, however, the announcer will give the call letters JFAK twice and, without further ado, pull the switch. This is the call of the broadcast station at Taihoku, principal city of Taiwan, the relay station presumably being JIB at Tyreki on a frequency of 10.530 mc. This same program is heard with poorer modulation and higher noise level near 9.630. While the latter is positively not an image, it appears to be some sort of spurious wave.

It had been our intention to make Radio Manila KZRM the subject of this page, but operating as they do on 9.570 mc or exactly the same channel as W1XK Millis, Mass., eastern listeners have little hope of hearing them while the latter is on the air. As W1XK fades out at daylight on the West Coast, listeners here experience no interference from that source.

In this issue the Station Data section will be found replete with detail, but listeners are reminded that only a third of this section is published each month.

---

SHORT WAVE REPORTER published monthly (excepting July and August) by  
Quixote Radio Club, Box 772, Santa Barbara, California.

10 cents a Copy, \$1 a Year (10 issues).

Entire contents copyright 1937 by E. J. Shields, Chats.  
Advertising accepted of reputable firms only. Rates on application.

會協送放灣臺 團社  
人法

地番三日丁二町武文市北臺

No. \_\_\_\_\_

番〇〇〇三 替換 番〇〇九三 北臺話電  
座口 番一〇九三

Taihoku Broadcasting Station  
Taihoku Taiwan (Formosa)  
Japan Nov. 12<sup>th</sup> 1937.

Dear Mr. Conrad Routh;

We take much pleasure in verifying your reception of Station J7.BK operating on a frequency of 9636 Kc. and J1B on a frequency of 10,535 Kc. on Oct. 14. Thursday.

We have a regular program of English news nightly at 11.00 p.m. (our time) which continues for approximately twenty minutes.

However, I repeat, that it gives us great pleasure to verify your report



會協送放灣臺 團社  
人法

地番三日丁二町武文市北嘉

No. ....

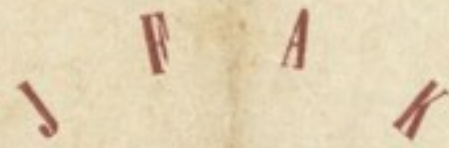
番〇〇〇三 警振 番〇〇九三 北臺話電  
座口 番一〇九三

and to know that we have listeners  
in the United States.

Once again thanking you for  
your letter and hoping that this  
letter of verification will suffice.

I should be very glad if you  
would kindly let me know your  
surroundings.

Thanking you for your interest  
and hoping that you will continue to  
enjoy our programs and this letter  
of verification will suffice.



會協送放灣臺 團社  
人法

地番三日丁二町武文市北臺

No. ....

番〇〇〇三 替振 番〇〇九三 北臺話  
座廿 番一〇九三

Yours very sincerely  
Jiro Uyashi  
Manager of the Taihoku  
Broadcasting Station



臺北放送局

# Short Wave Reporter



## HEAR TOKIO!

From the Land of Cherry Blossoms and the Rising Sun, Overseas Programs may now be heard daily, both on the Atlantic and the Pacific Coast. The Pacific has enjoyed these daily broadcasts for some time, but it is only lately that a daily schedule has been put into effect for the East. Further changes in time and frequencies may still be expected until the most favorable have been found. Directive antennae are employed and reception intended for another region is rare. The programs intended for the East Coast are carried by two stations, JZJ and JVN. The former is heard fairly well, but not the latter. The time: 4 till 5 p. m. EST; and the place (dial reading) for JZJ: 11.800 mc on the fringe of W1XAL Boston 11.790 mc. In fact, W1XAL operates between Tokio and Vienna at that hour and might cause some interference in the case of non-selective receivers.

Listeners on the West Coast must be content with hearing their own Hour over the same station, JZJ, at 9 p. m. PST, for it is not audible earlier in the afternoon, possibly due in part to the directive effect of the antenna employed.

The complete schedule of the several Overseas Hours, in EST, follows:

For Western United States and Canada, JZJ 11.800 mc 12 to 1 a. m.

For Java, Straits Settlements and Australia JZI-JZJ 9 to 10 a. m.

For Europe, JZI-JVP 2:30 to 3:30 p. m.

For Eastern United States and South America, JVN-JZJ 4 to 5 p. m.

---

SHORT WAVE REPORTER published monthly (excepting July and August) by Quixote Radio Club, Box 772, Santa Barbara, California.

10 cents a Copy, \$1 a Year (10 issues).

Entire contents copyright 1937 by E. J. Shields, Chots.

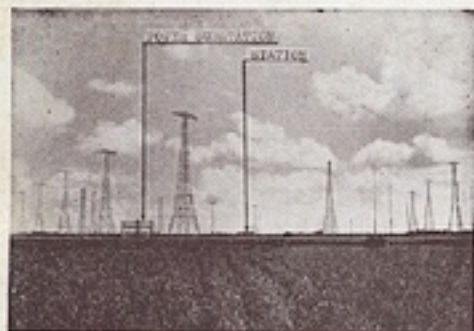
Advertising accepted of reputable firms only. Rates on application.

For Manchukuo, any of various stations almost throughout the day.

All programs open and close with the playing of the Kimigayo, the National Anthem of Nippon. Reports of reception are requested sent the Overseas Section, Nippon Hoso Kyokai, Atagoyama, Shiba-ku, Tokyo. All good students of the language will remember that yama means hill.

**OVERSEAS BROADCAST**

Nazaki Station Longitude 138°51'00"E  
Latitude 36°10'44"N



Broadcast Area	Broadcast Hours(GMT)	Call Sign	Frequencies in K. C.	Broadcast items
West Coast of North America, Hawaii	Daily 0500-0600	JVN JZI JVH JZK	10660 11800 14600 15160	News in English and Japanese, Music, Entertainment, Lecture, Etc.
Manila Dutch Indies Siam Malay State	Daily 1400-1500	JZI JZI JZK	9535 11800 15160	"
European countries	Daily 1930-2030	JVP JZI JVM JZI JZK	7510 9535 10740 11800 15160	"
East Coast of North America South America	Daily 2100-2200	JVN JZI JZK JZL	10660 11800 15160 17785	"

**RELAYING BROADCAST FOR MANCHUKUO AND FORMOSA**

Call Sign	Frequencies in K. C.	Broadcast Hours(GMT)	Broadcast items
JVT	6750	Daily 0000-0010	Weather forecast, Market quotations
JVP	7510	0240-0245	Market quotations
JZI	9535	0340-0410	News, Market quotations
JVN	10660	0650-0720	Market quotations, News
JVM	10740	0900-1230	Children's Hour, News, Lecture, Entertainment, Music, Drama, Etc.
JZI	11800		
JVH	14600	1230-1300	Time Signal, News, Weather forecast, Etc.
JZK	15160	2220-2240	Physical Exercise

20 KW. Transmitter



Remarks :-

⊛ Frequency used in this season of the year.

POST CARD

POSTAL  
STAMP

KOKUSAI-DENWA KAISHA LTD.

Osaka Bldg., Kojimachiku, Tokyo, Japan.

Tokyo, Sep. 15, 1937

Dear Sir,

Thank you for your kindness of  
informing us your receiving results of

J ZK on July 4th, 1937

J on 193

J on 193

We are very much obliged to you,  
if you will kindly let us know your receiv-  
ing condition of our station in the future.

Yours Sincerely,

Kokusai-Denwa Kaisha, Ltd

(International Wireless Telephone

Company of Japan, Ltd)

per,

Mr. Conard F. Routh

# Short Wave Reporter



## HEAR TOKIO!

The latest schedule of the Broadcasting Corporation of Japan provides for six daily transmissions. These will be found conveniently set forth below. Pacific Coast listeners should have no difficulty in logging not only the evening transmission directed to these shores, but the early morning transmissions as well. Although two transmissions are directed toward Eastern North America, to reach that region via the shortest distance the radio wave must hurdle the magnetic pole. Indeed whichever route it follow, much land must be traversed with the attendant attenuation of the wave.

1. For Europe (English, French, German & Japanese):			
9.535 JZJ	7.510 JVP	2½--4	SMTWTFS
2. For Latin America (Spanish or Portuguese & Japanese):			
9.535 JZJ	11.800 JZJ	4½5½	SMTWTFS
3. For Eastern North America (English & Japanese):			
11.800 JZJ		6-6½	SMTWTFS
4. For the Pacific Coast (English & Japanese):			
11.800 JZJ		12½1½	SMTWTFS
5. For Eastern North America (Japanese):			
11.800 JZJ	7-7½		SMTWTFS
6. For the South Sea Islands (English, French, Chinese & Japanese):			
11.800 JZJ	8-9½		SMTWTFS

The most favorable hour for reception in North America of Asiatic signals is the hour following sunrise. Programs intended to be heard at that hour are most favored by natural conditions. While similar conditions should be present as sunset approaches, it doesn't always work out that way. Tokio is particularly interested in reports on the reception of their evening program (transmission 3) for English speaking listeners on the East Coast. The morning program directed to the same zone may be the better received but lacks English announcements.

---

SHORT WAVE REPORTER published monthly (excepting July and August) by Quixote Radio Club, Box 772, Santa Barbara, California.  
10 Cents a Copy, \$1 a Year (10 issues).  
Entire contents copyright 1938 by E. J. Shields, Chots.  
Advertising accepted of reputable firms only. Rates on application.



# 國際電氣通信株式會社

Tokyo, *Oct. 30th* 193*8*

Dear Sir,

Thank you for your kindness of informing your receiving results of

J *XI* on *May 1st* 193*8*  
J on 193  
J on 193

We are very much obliged to you, if you will kindly let us know your receiving condition of our station in the future.

Yours Sincerely,

**KOKUSAI DENKITUSIN KABUSIKI KAISYA,**  
(THE INTERNATIONAL TELECOMMUNICATIONS CO., LTD.)

Head office: No. 2 Ote-machi 2-Tyome,  
Kojimati-ku, Tokyo, Japan.

Roger Legge

## Overseas Broadcast

Transmitting Station.  
Nasaki, Ibaraki Pre. Japan.

Broadcast area	Broadcast Hour (GMT)	Call Sign	Frequencies in K.C.	Broadcast Items
For Europe.	Daily 1930-2100	J Z I J Z J J Z K	9535 11800 15160	News in English, Germany, French and Japanese. Music, Entertainment. Lecture Etc.
For South American Countries.	Daily 2130-2230	J Z I J Z J J Z K J Z L	9535 11800 15160 17785	News in Portuguese Spanish, and Japanese. "
For Eastern Districts of North America.	Daily 1200-1230 0100-0130	J Z I J Z K J Z L	11800 15160 17785	News in Japanese. " News in English. "
For Pacific coast of North America. Canada and Honolulu.	Daily 0530-0630	J Z J J Z K J Z L	11800 15160 17785	News in English and Japanese. "
For South Sea. British India. Malaya. Siam. Etc.	Daily 1300-1430	J Z K J Z J	15160 11800	News in English, French, Chinese and Japanese. "

## Relaying Broadcast for Manchukuo and Formosa

Manchukuo and Formosa.	Daily 2125-2130	J V N	10660	News.
	2400-2445	J V H	14600	Market Quotation Etc.
	0240-0300	"	"	"
	0300-0400	"	"	News, Entertainment.
	0650-0730	J V N	10660	News, Market Quotations.
	0900-1300	"	"	News, Entertainment, Drama Etc.

# Short Wave Reporter



## HEAR KHABAROVSKI!

The Siberian station RV-15 of Khabarovsk (penultimate syllable "ba" accented) is now broadcasting on 6,050 kc, a new frequency, where it is heard on the Pacific Coast with excellent signal strength and clarity from about 10 p. m. PST until well after daylight. Reception is best at dawn, although the musical program ends at 6 a. m. PST after which lengthy press dispatches are sometimes read for copying by all eastern newspapers. For a time, RFN operated on 6,800 kc in parallel with RV-15, but that has been discontinued as has RV-15's lower frequency of 4,270 kc.

Normally RV-15 on 6,050 kc operates from noon PST until 6 a. m. the following morning (midnight municipal time at Khabarovsk). From 1:40 till 3:50 a. m. PST Moscow is relayed, the Moscow transmitter then being audible in northern latitudes on 6,030 kc. Moscow closes down at 3:50 a. m. whereupon RV-15 announces the following calls and wavelengths: RV-15 on 49.587 meters, RV-69 on 555.5 meters and RV-54, the City or Inner-City transmitter with programs for the local audience. The musical programs offered by Khabarovsk are noteworthy for their excellence.

Reports may be addressed to the Radio Committee, Khabarovsk, U.S.S.R., but it is only rarely that they are acknowledged. Instead of reply postage, a number of scenic postals might be more successful in eliciting reciprocal courtesy.

## SUPPLEMENTARY SCHEDULES

11.705 SBP	1 1/4 ---- 4 1/2		S
	1 ---- 4 1/2		MTWTFS
11.730 PHI		6 1/2 6 3/4	MTWTF
		7 1/4 7 3/4	S
17.830 LRA-5	3 - 4 1/2		F

SHORT WAVE REPORTER published monthly (excepting July and August) by Quixote Radio Club, Box 772, Santa Barbara, California.

10 Cents a Copy, \$1 a Year (10 issues).

Entire contents copyright 1938 by E. J. Shields, Chots.

Advertising accepted of reputable firms only. Rates on application.

**Radio Committee, Station RV15, Khabarowsk, USSR**

Dear Listener,

We are glad to verify that you heard our broadcast on . . . . .  
*Jan. 15. 1937* . at *4.03 EST* . . . o'clock, on a wave length of  
. . . . . *70.2* . . . metres.

We shall always be glad to hear from you and to have reports of reception. We shall also welcome criticisms of our programs and suggestions for improvement in the future.

Yours fraternally,  
*Rowena Meyer*  
Rowena Meyer—Chief Editor.