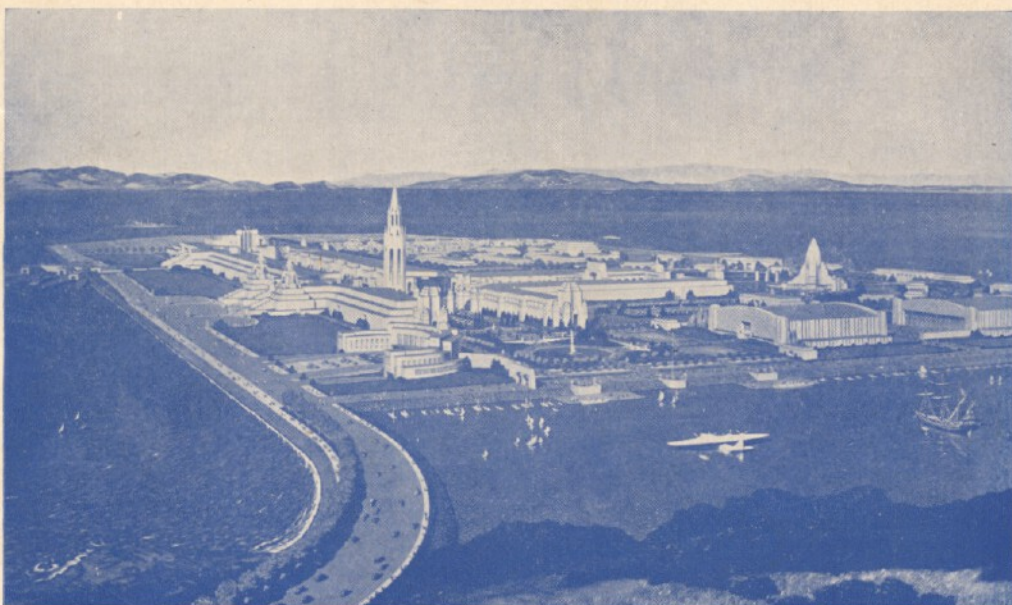


TREASURE ISLAND

ALL-WAVE

RADIO LOG



1939 Golden Gate International Exposition—"Treasure Island"—on San Francisco Bay.

A WESTERN LOG FOR WESTERN LISTENERS

- ★ Western Broadcast Band Log
- ★ Western Short Wave Log
- ★ Broadcast Band Featurelog
- ★ Short Wave Programs
- ★ Short Wave News Broadcasts Schedule
- ★ Short Wave Tuning Instructions

TO THE LISTENER

This new radio log has been compiled by the western representatives of the country's leading DX Radio Clubs. It is especially designed to suit the peculiar reception conditions west of the Rockies, and has been carefully checked and rechecked for accuracy.

From July 11 to 14, 1939, an International DX'ers Convention will be held on Treasure Island, San Francisco. The World's Leading DX Radio Clubs are cooperating to promote this convention, and this Treasure Island All-Wave Radio Log has been produced through the combined efforts of these clubs.

The log is undoubtedly the most accurate and up-to-date publication of its kind ever issued in this region. Reception conditions on the Pacific Coast differ greatly from those in the east, and a log which has not been compiled and edited west of the Rockies is virtually useless to the western listener. The Treasure Island Radio Log will prove its value to you, both in short wave and broadcast band tuning.

Remember the Golden Gate International DX'ers Convention

Treasure Island, San Francisco

July 11-14, 1939

DAILY NEWS BROADCASTS OF MAJOR WESTERN STATIONS

All Times are Pacific Standard unless otherwise noted — Schedules are Daily Except Sunday

TIME	6 A.M.	7 A.M.	8 A.M.	9 A.M.	10 A.M.	11 A.M.	NOON	1 P.M.	2 P.M.	3 P.M.	4 P.M.	5 P.M.	6 P.M.	7 P.M.	8 P.M.	9 P.M.	10 P.M.	11 P.M.	STATION AND DIAL KILOCYCLES	
OREGON	KW ^{1/2} KODS ^{3/4} KSLM ^{1/2} KXL	KQIN ^{1/2} ★KXL KSLM ^{1/2}	KQIN ^{1/2} ★KXL KSLM ^{1/2}	KQIN ^{1/2} ★KXL KSLM ^{1/2}	(1)KQIN ★KXL	KW ^{1/2} KODS ^{3/4} ★KALE ★KXL	(2)KALE ^{1/2} ★KXL	(1)KQIN ★KXL	(1)KQIN ★KXL	(1)KQIN ★KXL	(1)KQIN ★KXL	(1)KQIN ★KXL	(1)KQIN ★KXL	(1)KQIN ★KXL	(1)KQIN ★KXL	(1)KQIN ★KXL	(1)KQIN ★KXL	(1)KQIN ★KXL	(1)KQIN ★KXL	KALE 1300 KARM 1310 KDYL 1320 KMI 1330 KECA 1430 KMPG 710 KEHE 780 KMT ^{1/2} 570 KELA 1440 KXN 1050 KEY 1180 KOA 830 KFAC 1300 KODC 550 KFBK 1280 KOH 1380 KFBK 1490 KQIN 940 KFT 640 KOL 1270 KFAC 1250 KOMQ 570 KFBK 830 KODS 1200 KFCY 610 KOV 1300 KFCY 500 KPEA 1210 KFOD 1000 KPMG 1550 KFWB 950 KPO 680 KGA 1410 KOV 1010 KGB 1350 KRE 1370 KGDH 1100 KROW 950 KGER 1380 KROJ 1210 KPHL 1780 KRSC 1720 KGR 1340 KSEI 960 KGO 750 KSTO 600 KGV 1260 KSL 1130 KGV 620 KSLM 1360 KGY 1270 KSRD 1310 KJY 900 KTAR 620 KHS 590 KTFI 1240 KHSL 1260 KTRG 1190 KHUB 1310 KTRW 1220 KID 1320 KTRB 740 KID 1350 KTW 1220 KLEM 1450 KVI 570 KIEV 950 KVOA 1280 KIRO 710 KVOJ 920 KIT 1250 KVOJ 1270 KJBS 1070 KWG 1200 KJR 970 KWJ 1050 KLO 1400 KWSC 1220 KLS 1280 KXA 750 KX 880 KXL 1420 KYL 560 KYA 1230 KYOS 1040
NORTHERN CALIFORNIA	KHUB	KQW KFCB ^{3/4} KODS ^{3/4} KSRD KWB ^{1/2} KFCB ^{3/4}	KQW KFCB ^{3/4} KODS ^{3/4} KSRD KWB ^{1/2} KFCB ^{3/4}	KQW KFCB ^{3/4} KODS ^{3/4} KSRD KWB ^{1/2} KFCB ^{3/4}	(4)KSFOD ^{1/2} KRE ^{1/2} (9)KLS ^{1/2} ★KGO KFBK ^{1/2}	(4)KSFOD ^{1/2} KRE ^{1/2} (9)KLS ^{1/2} ★KGO KFBK ^{1/2}	(4)KSFOD ^{1/2} KRE ^{1/2} (9)KLS ^{1/2} ★KGO KFBK ^{1/2}	(4)KSFOD ^{1/2} KRE ^{1/2} (9)KLS ^{1/2} ★KGO KFBK ^{1/2}	(4)KSFOD ^{1/2} KRE ^{1/2} (9)KLS ^{1/2} ★KGO KFBK ^{1/2}	(4)KSFOD ^{1/2} KRE ^{1/2} (9)KLS ^{1/2} ★KGO KFBK ^{1/2}	(4)KSFOD ^{1/2} KRE ^{1/2} (9)KLS ^{1/2} ★KGO KFBK ^{1/2}	(4)KSFOD ^{1/2} KRE ^{1/2} (9)KLS ^{1/2} ★KGO KFBK ^{1/2}	(4)KSFOD ^{1/2} KRE ^{1/2} (9)KLS ^{1/2} ★KGO KFBK ^{1/2}	(4)KSFOD ^{1/2} KRE ^{1/2} (9)KLS ^{1/2} ★KGO KFBK ^{1/2}	(4)KSFOD ^{1/2} KRE ^{1/2} (9)KLS ^{1/2} ★KGO KFBK ^{1/2}	(4)KSFOD ^{1/2} KRE ^{1/2} (9)KLS ^{1/2} ★KGO KFBK ^{1/2}	(4)KSFOD ^{1/2} KRE ^{1/2} (9)KLS ^{1/2} ★KGO KFBK ^{1/2}	(4)KSFOD ^{1/2} KRE ^{1/2} (9)KLS ^{1/2} ★KGO KFBK ^{1/2}	KQW KALX ^{1/2} KFCB KFBK ^{1/2}	
SOUTHERN CALIFORNIA	KRYD ^{1/2} KGFJ	KNYL ^{1/2} ★KRD ^{1/2} KFL KFOA ^{1/2} KGFJ KGB ^{1/2}	KNYL ^{1/2} ★KRD ^{1/2} KFL KFOA ^{1/2} KGFJ KGB ^{1/2}	KNYL ^{1/2} ★KRD ^{1/2} KFL KFOA ^{1/2} KGFJ KGB ^{1/2}	KNYL ^{1/2} ★KRD ^{1/2} KFL KFOA ^{1/2} KGFJ KGB ^{1/2}	KNYL ^{1/2} ★KRD ^{1/2} KFL KFOA ^{1/2} KGFJ KGB ^{1/2}	KNYL ^{1/2} ★KRD ^{1/2} KFL KFOA ^{1/2} KGFJ KGB ^{1/2}	KNYL ^{1/2} ★KRD ^{1/2} KFL KFOA ^{1/2} KGFJ KGB ^{1/2}	KNYL ^{1/2} ★KRD ^{1/2} KFL KFOA ^{1/2} KGFJ KGB ^{1/2}	KNYL ^{1/2} ★KRD ^{1/2} KFL KFOA ^{1/2} KGFJ KGB ^{1/2}	KNYL ^{1/2} ★KRD ^{1/2} KFL KFOA ^{1/2} KGFJ KGB ^{1/2}	KNYL ^{1/2} ★KRD ^{1/2} KFL KFOA ^{1/2} KGFJ KGB ^{1/2}	KNYL ^{1/2} ★KRD ^{1/2} KFL KFOA ^{1/2} KGFJ KGB ^{1/2}	KNYL ^{1/2} ★KRD ^{1/2} KFL KFOA ^{1/2} KGFJ KGB ^{1/2}	KNYL ^{1/2} ★KRD ^{1/2} KFL KFOA ^{1/2} KGFJ KGB ^{1/2}	KNYL ^{1/2} ★KRD ^{1/2} KFL KFOA ^{1/2} KGFJ KGB ^{1/2}	KNYL ^{1/2} ★KRD ^{1/2} KFL KFOA ^{1/2} KGFJ KGB ^{1/2}	KNYL ^{1/2} ★KRD ^{1/2} KFL KFOA ^{1/2} KGFJ KGB ^{1/2}	KNYL ^{1/2} ★KRD ^{1/2} KFL KFOA ^{1/2} KGFJ KGB ^{1/2}	
CENTRAL CALIFORNIA	KARM ^{1/2} KMIJ ^{1/2} KPMG KYS	KTRB ^{1/2} KMIJ ^{1/2} KPMG KYS	KTRB ^{1/2} KMIJ ^{1/2} KPMG KYS	KTRB ^{1/2} KMIJ ^{1/2} KPMG KYS	KTRB ^{1/2} KMIJ ^{1/2} KPMG KYS	KTRB ^{1/2} KMIJ ^{1/2} KPMG KYS	KTRB ^{1/2} KMIJ ^{1/2} KPMG KYS	KTRB ^{1/2} KMIJ ^{1/2} KPMG KYS	KTRB ^{1/2} KMIJ ^{1/2} KPMG KYS	KTRB ^{1/2} KMIJ ^{1/2} KPMG KYS	KTRB ^{1/2} KMIJ ^{1/2} KPMG KYS	KTRB ^{1/2} KMIJ ^{1/2} KPMG KYS	KTRB ^{1/2} KMIJ ^{1/2} KPMG KYS	KTRB ^{1/2} KMIJ ^{1/2} KPMG KYS	KTRB ^{1/2} KMIJ ^{1/2} KPMG KYS	KTRB ^{1/2} KMIJ ^{1/2} KPMG KYS	KTRB ^{1/2} KMIJ ^{1/2} KPMG KYS	KTRB ^{1/2} KMIJ ^{1/2} KPMG KYS	KTRB ^{1/2} KMIJ ^{1/2} KPMG KYS	
WESTERN WASHINGTON	KJRB ^{1/2} KRC KSC KGY	KJRB ^{1/2} KRC KSC KGY	KJRB ^{1/2} KRC KSC KGY	KJRB ^{1/2} KRC KSC KGY	KJRB ^{1/2} KRC KSC KGY	KJRB ^{1/2} KRC KSC KGY	KJRB ^{1/2} KRC KSC KGY	KJRB ^{1/2} KRC KSC KGY	KJRB ^{1/2} KRC KSC KGY	KJRB ^{1/2} KRC KSC KGY	KJRB ^{1/2} KRC KSC KGY	KJRB ^{1/2} KRC KSC KGY	KJRB ^{1/2} KRC KSC KGY	KJRB ^{1/2} KRC KSC KGY	KJRB ^{1/2} KRC KSC KGY	KJRB ^{1/2} KRC KSC KGY	KJRB ^{1/2} KRC KSC KGY	KJRB ^{1/2} KRC KSC KGY	KJRB ^{1/2} KRC KSC KGY	
EASTERN WASHINGTON COLORADO	KWSD ^{1/2} KHQ ^{1/2}	KWSD ^{1/2} KHQ ^{1/2}	KWSD ^{1/2} KHQ ^{1/2}	KWSD ^{1/2} KHQ ^{1/2}	KWSD ^{1/2} KHQ ^{1/2}	KWSD ^{1/2} KHQ ^{1/2}	KWSD ^{1/2} KHQ ^{1/2}	KWSD ^{1/2} KHQ ^{1/2}	KWSD ^{1/2} KHQ ^{1/2}	KWSD ^{1/2} KHQ ^{1/2}	KWSD ^{1/2} KHQ ^{1/2}	KWSD ^{1/2} KHQ ^{1/2}	KWSD ^{1/2} KHQ ^{1/2}	KWSD ^{1/2} KHQ ^{1/2}	KWSD ^{1/2} KHQ ^{1/2}	KWSD ^{1/2} KHQ ^{1/2}	KWSD ^{1/2} KHQ ^{1/2}	KWSD ^{1/2} KHQ ^{1/2}	KWSD ^{1/2} KHQ ^{1/2}	
UTAH	KDYL ^{1/2}	KDYL ^{1/2}	KDYL ^{1/2}	KDYL ^{1/2}	KDYL ^{1/2}	KDYL ^{1/2}	KDYL ^{1/2}	KDYL ^{1/2}	KDYL ^{1/2}	KDYL ^{1/2}	KDYL ^{1/2}	KDYL ^{1/2}	KDYL ^{1/2}	KDYL ^{1/2}	KDYL ^{1/2}	KDYL ^{1/2}	KDYL ^{1/2}	KDYL ^{1/2}	KDYL ^{1/2}	
ARIZONA	KTAR ^{1/2}	KTAR ^{1/2}	KTAR ^{1/2}	KTAR ^{1/2}	KTAR ^{1/2}	KTAR ^{1/2}	KTAR ^{1/2}	KTAR ^{1/2}	KTAR ^{1/2}	KTAR ^{1/2}	KTAR ^{1/2}	KTAR ^{1/2}	KTAR ^{1/2}	KTAR ^{1/2}	KTAR ^{1/2}	KTAR ^{1/2}	KTAR ^{1/2}	KTAR ^{1/2}	KTAR ^{1/2}	
IDAHO	KTFI ^{1/2}	KID	KID	KID	KID	KID	KID	KID	KID	KID	KID	KID	KID	KID	KID	KID	KID	KID	KID	
MONTANA	KTFI ^{1/2}	KID	KID	KID	KID	KID	KID	KID	KID	KID	KID	KID	KID	KID	KID	KID	KID	KID	KID	

NOTE:—A few major stations have not yet furnished us with their news schedule; these stations will be listed as soon as we receive schedules.

NOTES:—(1) Mon, Tu, Sat 2:45, (2) 5 P.M. Sat, (3) 12:15 Th, Fr, (4) 5:30 Wed, 5:15 Th, (5) 11:45 Sat, (6) Midnight Daily, (7) 10:30 Wed, Th, (8) Ex. Fr, Sun.

SYMBOLS:—★Daily and Sunday, °Sunday only; +Except Sat & Sun; ▲Daily ex. Sat. 1/2, 2/3, 3/4, 15, 30, 45 min. past the hour, respectively.

AMERICAN BROADCAST BAND

(Western Stations shown in bold type)

Dial	Call	Location	Power (watts)	Dial	Call	Location	Power (watts)	Dial	Call	Location	Power (watts)
540	CJRM	Moose Jaw, Sask.	1000	920	KOMO	Seattle, Wash.	2000	1220	KWSC	Pullman, Wash.	1000
550	KOAC	Corvallis, Ore.	1000	930	KROW	Oakland, Cal.	1000		KTMS	Santa Barbara, Cal.	500
560	KLZ	Denver, Colo.	1000	940	KOIN	Portland, Ore.	1000	1230	KTW	Seattle, Wash.	1000
	KFSO	San Francisco	1000		XEFO	Mexico Cy., Mex.	5000		KYA	San Francisco	1000
570	KMTR	Los Angeles, Cal.	1000	950	KFVB	Hollywood, Cal.	1000	1240	KTFI	Twin Falls, Ida.	1000
	KVI	Tacoma, Wash.	1000	960	XEAW	Reynosa, Mex.	50000	1250	KFOX	Long Beach, Cal.	1000
580	KMJ	Fresno, Cal.	1000	970	KJR	Seattle, Wash.	5000	1260	KGVO	Missoula, Mont.	1000
590	KHQ	Spokane, Wash.	1000	980	KDKA	Pittsburgh, Pa.	50000		KHSL	Chico, Calif.	250
600	CJOR	Vancouver, B.C.	500	990	WBZ	Boston, Mass.	50000	1270	KOL	Seattle, Wash.	1000
	KFSD	San Diego, Cal.	1000	1000	KFYD	Culver City, Cal.	1000	1280	KFBB	Great Falls, Mont.	1000
610	KFRC	San Francisco	5000		WHO	Des Moines, Ia.	50000	1290	KLS	Oakland, Calif.	250
620	KGW	Portland, Ore.	1000	1010	CKCD	Vancouver, B.C.	100	1300	KDYL	Salt Lake City	1000
	KTAR	Phoenix, Ariz.	1000		CKWX	Vancouver, B.C.	100		KALE	Portland, Ore.	500
	CFCY	Charlottetown, P.E.I.	1000	1020	KQW	San Jose, Cal.	1000		KFAC	Los Angeles	1000
	CKOV	Kelowna, B.C.	100	1030	KYW	Philadelphia, Pa.	10000		CHCK	Charlottetown, P.E.I.	50
640	KFI	Los Angeles	50000	1040	CFCN	Calgary, Alta.	10000		KCRJ	Jerome, Ariz.	100
650	WSM	Nashville, Tenn.	50000		XEB	Mexico City, Mex.	10000		KGZE	Kalispell, Mont.	100
660	WEAF	New York City	50000	1050	KRLD	Dallas, Texas	10000	1310	KHUB	Watsonville, Cal.	250
670	WMAQ	Chicago, Ill.	50000		KWJJ	Portland, Ore.	500		KIT	Yakima, Wash.	100
	XELO	Tijuana, Mexico	5000	1060	KYOS	Merced, Cal.	250		KARM	Fresno, Calif.	100
680	KPO	San Francisco	50000	1070	WTIC	Hartford, Conn.	50000		KSRQ	Santa Rosa, Cal.	250
690	CFRB	Toronto, Ont.	10000	1080	KNX	Hollywood, Cal.	50000	1320	KXRO	Aberdeen, Wash.	100
700	WLW	Cincinnati, O.	500000	1090	KTHS	Hot Springs, Ark.	10000		KGMB	Honolulu, T.H.	1000
710	KIRO	Seattle, Wash.	1000	1100	KJBS	San Francisco	500	1330	KID	Idaho Falls, Idaho	500
	KMPG	Bakersfield, Cal.	1000		WTAM	Cleveland, O.	50000		KGB	San Diego, Calif.	1000
720	WGN	Chicago, Ill.	50000	1110	WBT	Charlotte, N.C.	50000	1340	KMO	Tacoma, Wash.	1000
730	CJCA	Edmonton, Alta.	1000		KMOX	St. Louis, Mo.	50000	1350	KGIR	Butte, Mont.	1000
	XEPN	Piedras Negras, Mexico	100000	1120	KGDM	Stockton, Cal.	1000	1360	KIDO	Boise, Idaho	1000
740	WSB	Atlanta, Ga.	50000		CBR	Vancouver, B.C.	5000		KGER	Long Beach, Cal.	1000
	KTRB	Modesto, Cal.	250	1130	KWKH	Shreveport, La.	10000		KAST	Astoria, Ore.	100
750	KGU	Honolulu, T. H.	2500		KSOO	Sioux Falls, S. D.	5000		KERN	Bakersfield, Cal.	100
	WJR	Detroit, Mich.	50000	1140	KFIO	Spokane, Wash.	100	1370	KGAR	Tucson, Ariz.	100
760	KXA	Seattle, Wash.	250		KFSG	Los Angeles	500		KRE	Berkeley, Cal.	100
	WJZ	New York, N.Y.	50000	1150	KRKC	Seattle, Wash.	250		KRKO	Everett, Wash.	50
770	KFAB	Lincoln, Nebr.	10000		KSL	Salt Lake City, Utah	50000		KSLM	Salem, Ore.	100
	WBFB	Chicago, Ill.	50000	1160	KVOO	Tulsa, Okla.	25000		KUJ	Walla Walla, Wash.	100
	CHWK	Chilliwack, B.C.	100	1170	WHAM	Rochester, N.Y.	50000	1380	KEEN	Seattle, Wash.	100
	KEHE	Los Angeles, Cal.	1000	1180	WOWO	Ft. Wayne, Ind.	10000		KVRS	Rock Springs, Wyo.	100
780	KGHL	Billings, Mont.	1000		WCAU	Philadelphia, Pa.	50000	1390	KOH	Reno, Nev.	500
	KWLK	Longview, Wn.	250	1190	KEX	Portland, Ore.	5000		KRLC	Lewiston, Idaho	250
790	KGO	San Francisco	7500		KOB	Albuquerque, N.M.	10000	1400	KOY	Phoenix, Ariz.	1000
800	WBAP	Ft. Worth, Tex.	50000	1200	WOAI	San Antonio, Tex.	50000		KLO	Ogden, Utah	500
	WFAA	Dallas, Tex.	50000		KTKC	Visalia, Calif.	250	1410	CKFC	Vancouver, B.C.	50
810	WCCO	Minneapolis, Minn.	50000		KFXD	Nampa, Idaho	100		CKMO	Vancouver, B.C.	100
	WHAS	Louisville, Ky.	50000	1210	KGJF	Los Angeles	100		KMED	Medford, Ore.	250
820	COA	Denver, Colo.	50000		KSUN	Lowell, Ariz.	100		KBPS	Portland, Ore.	100
830	CRCT	Toronto, Ont.	5000		KVCV	Redding, Cal.	100	1420	KEUB	Price, Utah	100
840	XERA	Villa Acuna, Mex.	350000		KVEC	San Luis Obispo, Cal.	250		KGCC	San Francisco	100
	CBL	Toronto, Canada	50000		KVOS	Bellingham, Wash.	100		KLBM	La Grande, Ore.	100
	KIEV	Glendale, Cal.	250		KWG	Stockton, Cal.	100		KORE	Eugene, Ore.	100
860	XEMO	Tijuana, Mex.	5000		KDNC	Lewiston, Mont.	100		KUMA	Yuma, Ariz.	100
870	WENR	Chicago, Ill.	50000		KGOO	Marshfield, Ore.	100	1430	KXL	Portland, Ore.	100
880	CFJC	Kamloops, B.C.	100		KGCI	Coeur d'Alene, Idaho	100		KECA	Los Angeles	1000
	KLX	Oakland, Cal.	1000		KDON	Del Monte, Cal.	100	1440	KDFN	Casper, Wyoming	500
890	KFPY	Spokane, Wash.	1000		KFJL	Klamath Falls, Ore.	100	1450	KELA	Centralia, Wn.	500
	XEW	Mexico City, D.F.	50000		KFXM	San Bernardino, Cal.	100		CFCT	Victoria, B.C.	75
900	KGBU	Ketchikan, Alaska	500		KGY	Olympia, Wash.	100		CHGS	Summerside, P.E.I.	50
	KHJ	Los Angeles	1000	1220	KPPC	Pasadena, Cal.	100	1460	KGCX	Wolf Pt., Mont.	1000
	KSEI	Pocatello, Idaho	250		KPFA	Helena, Mont.	100		KIEM	Eureka, Calif.	500
910	CJAT	Trail, B.C.	1000		KROY	Sacramento, Cal.	100	1470	KSTP	St. Paul, Minn.	10000
	XENT	Nuevo Laredo, Tams	150000					1480	KGA	Spokane, Wash.	5000
								1490	KFBK	Sacramento, Cal.	5000
									KDB	Santa Barbara, Cal.	100
									KPO	Wenatchee, Wash.	100
								1500	KRNR	Roseburg, Ore.	100
									KUTA	Salt Lake City	1000
									KVOE	Santa Ana, Cal.	100
									KXO	Ei Centro, Cal.	100

NOTICE TO SHORT WAVE LISTENERS . . .
 Don't fail to see the November issue of "Radio News", the *only* national radio magazine with a special section devoted to Pacific Coast short wave listeners. . . .
 on all newsstands October 10.

DAILY FEATURELOG

BEST BETS ON THE BROADCAST BAND

(Parenthesized letters indicate network which will carry broadcast.)

NBC-B (National Broadcasting Co.—Blue Network) KG0—San Francisco; KECA—Los Angeles; KLO—Ogden; KEX—Portland; KSFD—San Diego; KTMS—Santa Barbara; KJR—Seattle; KGA—Spokane.
 NBC-R (National Broadcasting Co.—Red Network) KPO—San Francisco; KOA—Denver; KFI—Los Angeles; KGW—Portland; KDYL—Salt Lake City; KOMO—Seattle; KHQ—Spokane.
 CBS (Columbia Broadcasting System) KSFO—San Francisco; KNX—Los Angeles; KOIN—Portland; KIRO—Seattle; KFPY—Spokane; KDY—Phoenix; KSL—Salt Lake City; KLZ—Denver; KARM—Fresno; KROY—Sacramento; KGAR—Tucson; KFBB—Great Falls, Mont.
 MBS (Mutual Broadcasting System) KFRC—San Francisco; KHJ—Los Angeles; KIEM—Eureka.

SUNDAY

9:30 A.M., Radio City Music Hall. NBC-B
 11:00 A.M., Magic Key of RCA. NBC-B
 Noon, Sunday Drivers NBC-R
 1 P.M., Sunday Vespers. NBC-B
 2:00 P.M., There Was a Woman. NBC-B
 3:00 P.M., Phil Cook's Almanac. CBS
 5:00 P.M., Chase and Sanborn Hour, with Charlie McCarthy. NBC-R
 6:00 P.M., Ford Sunday Evening Hour. CBS
 6:30 P.M., American Album of Familiar Music. NBC-R
 7:00 P.M., Horace Heidt & Orch. NBC-B
 7:00 P.M., Signal Carnival. NBC-R
 8:00 P.M., Winchell's Column Quiz. NBC-R
 8:30 P.M., Jell-O Program. NBC-R
 9:00 P.M., I Want a Divorce. NBC-R
 9:30 P.M., One Man's Family. NBC-R

MONDAY

9:30 A.M., National Farm & Home Hour. NBC-B
 6:00 P.M., Lux Radio Theatre. CBS
 7:00 P.M., Carnation Contented Program. NBC-R
 7:30 P.M., Believe It or Not. NBC-R
 7:30 P.M., National Radio Forum. NBC-B
 8:30 P.M., Voice of Firestone. NBC-R
 9:00 P.M., Hawthorne House. NBC-R
 9:30 P.M., Battle of Sexes. NBC-R

TUESDAY

6:00 P.M., We, The People. CBS
 6:30 P.M., Jamboree. NBC-B
 6:30 P.M., Benny Goodman. CBS
 6:30 P.M., Fibber McGee. NBC-R
 7:00 P.M., Bob Hope. NBC-R
 7:30 P.M., Jimmy Fidler. NBC-R
 8:30 P.M., Johnny Presents. NBC-R
 8:30 P.M., Big Town, Ed. G. Robinson. CBS

WEDNESDAY

7:00 P.M., Kay Kyser's Musical Klass and Dance. NBC-R
 7:00 P.M., Opera Series. NBC-B

8:30 P.M., Paul Whiteman's Orch. CBS
 8:30 P.M., Tommy Dorsey's Orch. NBC-R
 9:00 P.M., Town Hall Big Game Hunt. NBC-R
 9:00 P.M., Gang Busters. CBS
 9:30 P.M., Ted Weems. CBS
 11:00 P.M., Henry King. CBS

THURSDAY

5:00 P.M., Rudy Vallee's Variety Hour. NBC-R
 5:00 P.M., Stepping Ahead with America. John B. Hughes. NBC-B
 6:00 P.M., Major Bowes Amateur Hour. CBS
 6:00 P.M., Good News of 1939. NBC-R
 6:00 P.M., Singing Strings. MBS
 7:00 P.M., Kraft Music Hall with Bob Burns. NBC-R
 7:30 P.M., Americans at Work. CBS
 8:15 P.M., Standard Symphony Hour. NBC-R
 8:15 P.M., Don't You Believe It. MBS
 8:30 P.M., Kate Smith. CBS

FRIDAY

4:30 P.M., Adventures in Science. CBS
 6:30 P.M., March of Time. NBC-R
 5:00 P.M., Campana's First Nighter. CBS
 7:00 P.M., Wayne King. NBC-R
 7:30 P.M., Calling All Cars. CBS
 8:30 P.M., Burns & Allen. CBS
 9:00 P.M., Death Valley Days. NBC-R
 9:00 P.M., Gilmore Circus. NBC-R
 9:30 P.M., Opportunity Theatre. NBC-B

SATURDAY

4:00 P.M., Sunset Serenade. CBS
 5:00 P.M., Tommy Riggs. NBC-R
 6:00 P.M., Hawaii Calls. MBS
 6:30 P.M., The River King, Drama. MBS
 7:00 P.M., Lucky Strike Hit Parade. CBS
 8:00 P.M., National Barn Dance. NBC-R
 8:30 P.M., Johnny Presents. CBS
 9:00 P.M., Professor Quiz. CBS
 9:30 P.M., King's Jesters Orch. NBC-B