

ATWATER KENT

RADIO EQUIPMENT



Model 20 Cabinet Receiving Set

THE unusually high standard of workmanship is immediately noted on examining the Model 20 Receiver. A solid mahogany cabinet with beautiful dull rubbed surface, smooth brown condensite dials mounted on a dark brown dull finished panel.

The wide range of reception of the Model 20 Receiver together with the volume obtained on either local or distant broadcasts will please the most exacting radio enthusiast.

The simplicity of operation and the velvety feeling to the touch when operating the dials are noteworthy features.

It is designed for five $\frac{1}{4}$ ampere tubes and employs two stages of tuned radio frequency amplification, detector and two stages of audio frequency amplification.

Part No. 4640 Model 20 Cabinet Receiving Set \$100.00

Choice of Battery Cables for the Above

Part No. 4903 6 ft. of Conductor Cable \$2.50

Part No. 4905 10 ft. of Conductor Cable \$3.50

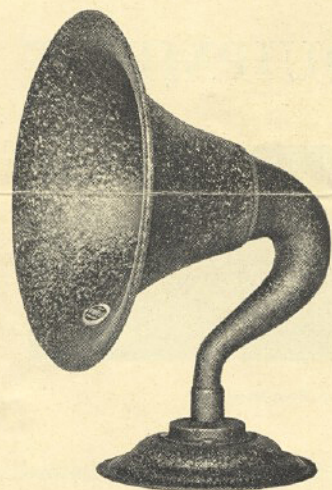
Prices in Canada approximately 40% higher

ATWATER KENT

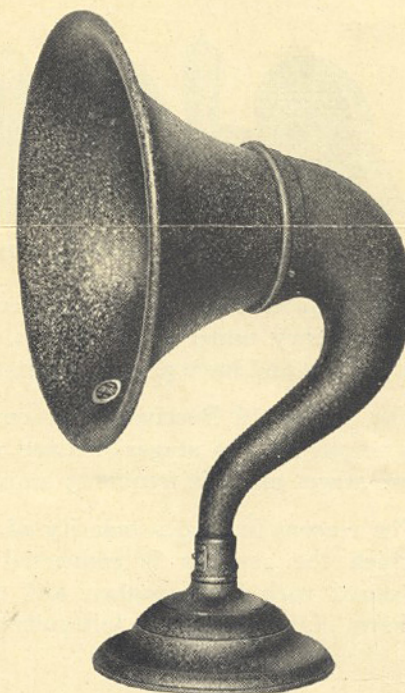
LOUD SPEAKERS

and

PHONOGRAPH ATTACHMENTS



Part No. 4800 Model "R" Loud Speaker \$15.00



Part No. 4460 Model "M" Loud Speaker \$28.00

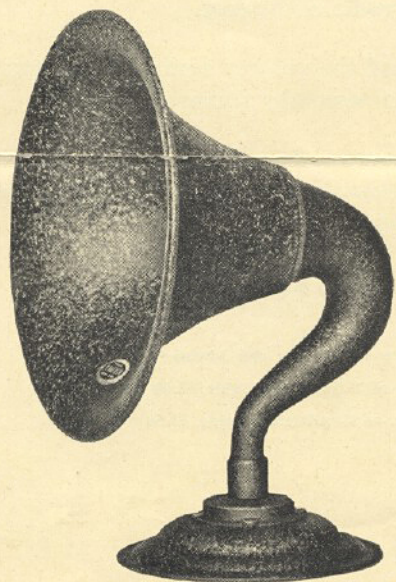
ATWATER KENT Loud Speakers and Phonograph Attachments are known for their uniform excellence, their tone quality, volume and true recreation of broadcasting.

The extreme care in design and manufacture of these reproducers has resulted in a standard of tone quality which is unexcelled.

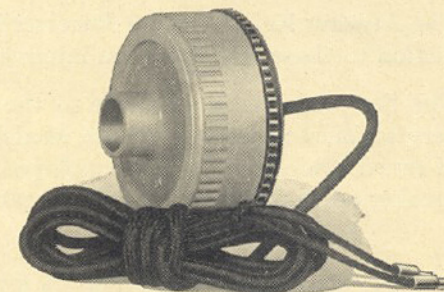
A choice of three loud speakers is offered this Season, all of which embody the Atwater Kent high standard of quality, tone and finish.

These Loud Speakers have a beautiful, dark brown crystalline finish which harmonizes with any furnishings. Prices include 9 feet of flexible cord.

The Phonograph Attachments are made in two types 5V and 6C and are adaptable to popular types of Phonographs. They are furnished with 9 feet of flexible cord.

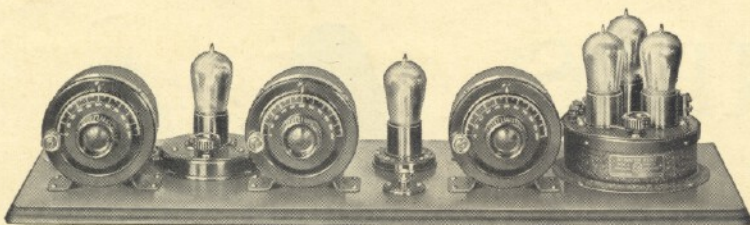


Part No. 4645 Model "L" Loud Speaker \$20.00



Part No. 4437 Type 5V Phonograph Attachment \$10.00
Part No. 4438 Type 6C Phonograph Attachment \$10.00

ATWATER KENT RADIO

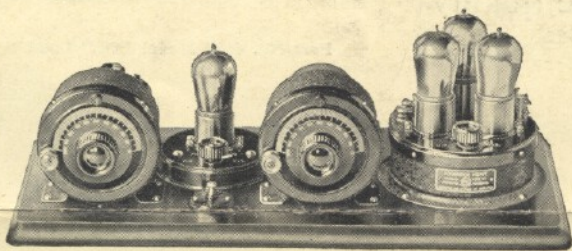


Part No. 4700 Model 10 Receiving Set \$85.00

The Atwater Kent Model 10 Receiving Set has demonstrated its efficiency under all conditions. Over 50,000 Model 10 Sets are in use and have given unlimited satisfaction to the users.

The Model 10 Receiving Set employs five $\frac{1}{4}$ ampere tubes arranged for two stages of tuned radio frequency, detector and two stages of audio frequency amplification.

The reasons for the popularity of this set are:—The ease with which the receiver is connected and operated, the volume secured with loud speaker, and the reliability of results and charm of distant signals faithfully reproduced.



Part No. 4660 Model 9 Receiving Set \$65.00

The Atwater Kent Model 9 Receiver has given a world of satisfaction to those who desire an intermediate priced radio set.

The Set conforms in principle to the arrangements used in the very satisfactory and successful Model 10 Receiver. One Stage of tuned radio frequency is employed. It is designed for loud speaker operation using $\frac{1}{4}$ ampere tubes.

ATWATER KENT MFG. COMPANY
Philadelphia