

We will be pleased to get further reports from you as to reception. **K F I X**

268 METERS, 1120 KILO-CYCLES

Thank You For Writing



We assure you that your communication is appreciated, and ask you to accept this in lieu of a personal letter. We are always glad to receive reports concerning our programs and transmission, and those who participate in the programs are made happy to learn that their efforts to please you are successful.

Station KFIX

KFIX was licensed by the Government in the summer of 1923 and has since maintained the regular broadcasting schedule given on this card. The station equipment was made and assembled in our own laboratory. It has a power output rated at 250 watts. Meissner circuit with Heising modulation. The apparatus is licensed under patents held by the American Telephone and Telegraph Company. Telephone lines connect the equipment at the station to the Radio Studio, the First Independence L. D. S. Church, and other places from which programs are broadcast.

Independence, Missouri

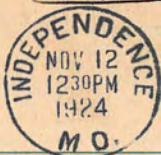
Independence is located ten miles east of Kansas City. It is the County Seat of Jackson County, noted for its farms, dairies, and orchards. It is the oldest city in western Missouri, and the original starting point for the Santa Fe Trail. It is a city of "homes and schools and churches," and is a live, progressive community. "Small enough to know you; yet large enough to serve you." It is the headquarters of the Reorganized Church of Jesus Christ of Latter Day Saints, owners of KFIX. The Campus of the Independence Institute of Arts and Sciences is known the country over by tourists, and is a playground and community center.

Programs Published Weekly

Advance programs broadcast from KFIX are printed each week in the church publications. *Zion's Ensign*, the church missionary paper, contains radio programs every week. A sample copy of this magazine will be sent free to any address upon request to Herald Publishing House, Independence, Missouri.

REORGANIZED CHURCH OF JESUS CHRIST OF LATTER DAY SAINTS
INDEPENDENCE, MISSOURI

125



THIS SIDE OF CARD IS FOR ADDRESS

K F I X

REGULAR SCHEDULE

CENTRAL STANDARD TIME

WAVE LENGTH 268 METERS

Tuesdays9 p. m.

Thursdays9 p. m.

Sundays11 a. m.

Sundays7.30 p. m.

The Tuesday and Thursday evening programs consist of musical entertainment and educational talks. On Sundays services are broadcast from the First Independence L. D. S. Church.

David F. Thomas,
Proctorville,
Ohio.

THE PRINCIPIA

SAINT LOUIS

MISSOURI

2

To Our Radio Audience

We wish to express our appreciation of your report of our broadcast, for, as you no doubt realize, it is only through such reports that we can judge the results of our station. We will always be glad to receive comments and suggestions from you and our only regret is, that it is not possible for us to acknowledge each report with a personal letter.

The Principia,
5539 Page Boulevard,
Radio Station K F Q A
261 Meters or 1150 Kilocycles.

KFQA

After five days, return to
THE PRINCIPIA,
5539 Page Boul.,
SAINT LOUIS, MISSOURI.

97



Mr David F Thomas
Proctorville
Ohio

Station KFUO, Concordia Seminary, St. Louis.

(545.1 Meters — 500 Watts.)

Evangelical Lutheran Synod of Missouri, Ohio, and Other States.

Time of Broadcasting: Sundays, 4 P. M. and 9.15 P. M.;

Mondays, 8 P. M.; Wednesdays, 9.15 P. M. (CENTRAL STANDARD TIME.)

We are pleased to know that you heard our station and herewith acknowledge your communication. Thank you!

We hope you will regularly tune in when KFUO is on the air. May you derive spiritual benefit from the Gospel-messages sent forth from our station and be edified by our programs of sacred song and music!

Herman H. Hohenstein, *Director.*

Walter A. Maier. }

John H. C. Fritz. } *Radio Committee.*

KFUO stands for the Gospel, that Christ died for our sins.

TELL YOUR FRIENDS TO TUNE IN!

OUR PIONEER RADIO COMMITTEE.



Prof. John H. C. Fritz,
Dean of Concordia Theological
Seminary.



Prof. Walter A. Maier,
Professor of Old Testament Interpretation
at Concordia Theological Seminary.

These two theologians, members of the Faculty of Concordia Seminary, St. Louis, Mo., have done real pioneer work for Station KFUO. From the beginning they arranged the programs, secured the speakers, delivered sermons and addresses themselves, discovered and engaged the musical talent, attended to the announcing, conducted the voluminous correspondence, gave the station wide publicity, and, in general, looked after the interests of KFUO. May the living Lord in heaven graciously and abundantly reward their faithful, efficient labors and give them the strength needed for their work at the Seminary!

Rev. Herman Hohenstein.

Through the cooperation of a friend of Station KFUO we have been placed into a position to send free of all charge a Lutheran hymnal to those who are not in a position to secure one and who wish to join in the singing of the hymns broadcast from our station. During the week of October 11 we received appreciative letters from radio listeners-in in twenty-two different States of the Union. Friends of our station are invited to communicate with KFUO in regard to the reception of our programs and any question touching upon the work, the purpose, and the programs of our station. Names and addresses of such people are placed upon our vast mailing-list, and from time to time we send them literature, particularly our printed programs, on which we announce the topics and the speakers. Friends, write to us.

Tell others about our station and ask them to listen in. Give our station as much publicity as possible and insert our weekly programs in the local newspapers.

Pass the extra copies of this program on to some friend.

GOD BLESS YOU FOR JESUS' SAKE!

STATION KFUO

CONCORDIA SEMINARY

SAINT LOUIS, MO.

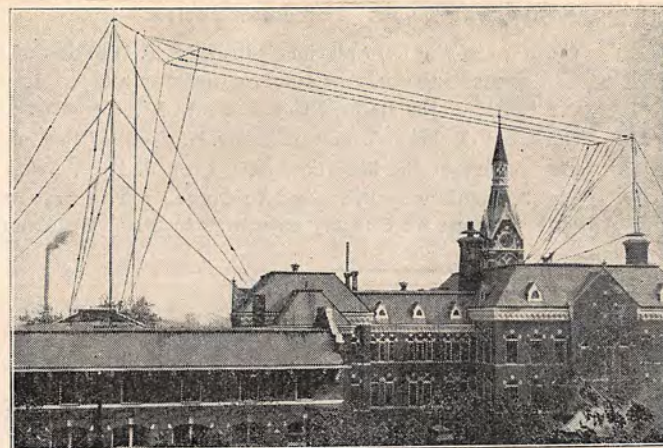
REV. HERMAN H. HOHENSTEIN, Director.

PROF. JOHN H. C. FRITZ }
PROF. WALTER MAIER } Radio Committee.

Wave Length: 545.1 Meters.

Power: 500 Watts.

Range: KFUO has been heard throughout the United States, in Canada, on the ocean, and in the West Indies.



KFUO is owned and operated by the Board of Control of Concordia Theological Seminary. It broadcasts from the KFUO studio and from the chapel of Concordia Seminary. It features only religious programs with the glad tidings that "Christ died for our sins." 1 Cor. 15.

Poem Dedicated to Station KFUO by Mrs. E. T. J. Birner, Bunker Hill, Ill.

Tune in on your radio!
Listen to KFUO;
Hear the story of your Lord,
Who, with love and sweet accord,
Came on earth to live.

Hear the loud hosannas ring;
Hear the choirs sweetly sing,
Echoing the message true
That the Christ-child lived for you.
To Him all glory give.

Tune in on the Gospel true;
Know the Savior died for you;
For by faith you now are free,
Saved from your iniquity.
Believe that you may live.

K for knowledge of the truth;
F for fearlessness of youth;
U for unity and faith;
O for onward in the race.
So tune in on KFUO!

THE PROGRAM FOR NOVEMBER.

Sunday Afternoons, 4 P. M.

General Topic: The "I Am's" of Jesus.

- November 1. "I Am the Way, the Truth, and the Life." The Rev. Herman H. Hohenstein. (Reformation Address.)
November 8. "I Am the Bread of Life." Prof. P. E. Kretzmann.
November 15. "I Am the True Vine." The Rev. John Bajus, of Granite City, Ill.
November 22. "I Am the Light of the World." The Rev. A. Doerfler.
November 29. "I Am a King." The Rev. G. Luecke. (An Advent Address.)

Sunday Evenings, 9.15 P. M.

General Topic: The Reformation.

- November 1. "The Need of the Reformation." Prof. M. T. Winkler, of Concordia College, Malvern, Adelaide, South Australia.
November 8. "The Spirit of the Reformation." Prof. J. T. Mueller.
November 15. "The Land of the Reformation." Dr. H. Koch, of Berlin, Germany.
November 22. "The Victory of the Reformation." Prof. J. H. C. Fritz.
November 29. "The Messiah was Promised to Come." The first of a series of four Advent sermons on Sunday evenings by Prof. W. Arndt.

Monday Evenings, 8 P. M.

General Topic: "Whoso findeth a wife findeth a good thing and obtaineth favor of the Lord." Prov. 18, 22.

A series of five addresses in commemoration of the four-hundredth anniversary of Luther's marriage on June 13, 1525.

- November 2. "Courtship." The Rev. C. F. Drewes, of St. Louis, Mo.
November 9. "Betrothal." The Rev. O. W. H. Lindemeyer, of St. Louis, Mo.
November 16. "Marriage." The Rev. A. Kuehnert, of St. Louis, Mo.
November 23. "Parenthood." The Rev. H. Claus, of Ferguson, Mo.
November 30. "The Christian Home." The Rev. A. Behnke, of St. Louis, Mo.

Wednesday Evenings, 9.15 P. M.

General Topic: The Four-Hundredth Anniversary of W. Tyndale's Translation of the Holy Bible.

- November 4. "Luther and Tyndale." Prof. J. H. C. Fritz.
November 11. "The Unequaled Contents of the Bible." Prof. O. Boecler.
November 18. "The Unique Language of the Bible." Prof. O. Boecler.
November 25. "Praise God from Whom All Blessings Flow." The Rev. E. Biegner. (A Thanksgiving Address.)

NOTE. — A good program of songs and music is broadcast with every sermon or address. — The time shown is Central Standard Time.

THE PROGRAM FOR DECEMBER.

Sunday Afternoons, 4 P. M.

General Topic: "The 'I Am's' of Jesus. (Continued from November.)

- December 6. "I Am the Resurrection and the Life." The Rev. A. Korris.
December 13. "I Am the Good Shepherd." The Rev. R. Jesse.
December 20. "I am Come Down from Heaven." Prof. M. Sommer.
December 27. "I Am the Alpha and the Omega." The Rev. L. Buchheimer.

Sunday Evenings, 9.15 P. M.

General Topic: A Series of Advent Sermons by Prof. W. Arndt. (Continued from November.)

- December 6. "The Messiah Came."
December 13. "The Messiah Comes."
December 20. "The Messiah Will Come."
December 27. "Did You Really Celebrate a Merry Christmas?" The Rev. W. Peters. (A Post-Christmas Question.)

Monday Evenings, 8 P. M.

General Topic: The Young People Prepare Their Christmas Gifts.

- December 7. "The Gold of Faith." The Rev. R. Prange.
December 14. "The Frankincense of Prayer." The Rev. E. Roschke.
December 21. "The Myrrh of Repentance." The Rev. J. Opplinger.
December 28. "Shall Faith, Prayer, and Repentance be Forgotten after Christmas?" The Rev. Herman H. Hohenstein.

Wednesday Evenings, 9.15 P. M.

General Topic: Address on Advent and Christmas Hymns by Prof. W. Polack.

- December 2. "Lift Up Your Heads, Ye Mighty Gates."
December 9. "Once He Came in Blessing."
December 16. "O Little Town of Bethlehem."
December 23. "The Angels' Christmas Song." The Rev. P. Koenig. (A Christmas Sermon.)
December 30. "Abide with Us." The Rev. F. Herzberger, Senior Lutheran City Missionary of St. Louis, Mo. (A message for the last day of the old year.)

Christmas and New Year.

December 25. "Christ, the Savior, is Born!" The Rev. F. Brand, Third Vice-President of the Lutheran Church of the Missouri Synod.

NOTE. — This program will be given at 8 o'clock in the morning.

New Year. Our New Year's program will be rendered the first Sunday in the new year.

Sunday, January 3, 4 P. M. "Happy New Year!" The Rev. H. Claus, of Ferguson, Mo.

Sunday, January 3, 9.15 P. M. "Jesus, Be Our Guide." The Rev. R. Kretzschmar.

NOTE. — A good program of songs and music is broadcast with every sermon or address. — The time shown is Central Standard Time.

33

518

STATION KFUO
CONCORDIA SEMINARY
St. Louis, Mo.

Return Postage Guaranteed



David Thomas,
Proctorville,
Ohio

We issue EKKO stamps

Dear "Radio Fan"

This is Station KFWF, the Voice of Truth of the St. Louis Truth Center at 4030 Lindell Blv'd., sending you one of their monthly magazines, through the courtesy of one good man. He wants you to read this magazine from "kiver to kiver" and then fill out the blank and return it with a dollar to STATION KFWF, St. Louis, Mo., or the St. Louis Truth Center, 4030 Lindell Blv'd., and you will then receive a year's subscription to what he believes to be "the best Spiritual magazine on the market."

If you do not wish the magazine for yourself you might have it sent to someone you know would enjoy it very much. If you will read this magazine carefully it will acquaint you with STATION KFWF. You will find the subscription blank on page 30. Please fill it out and return with a dollar bill.

STATION KFWF, 4030 Lindell Blv'd.,
St. Louis, Missouri.

P.S. Tune in next Tuesday evening at 7:30 and you will hear a splendid program. You will also hear about our coming "Radio Teas."

358

546



THE VOICE OF TRUTH



A MAGAZINE DEVOTED TO CHRISTIAN HEALING

VOL. 4

DECEMBER, 1925

No. 4

Price, 10 Cents Each.



FROM

REV. EMIL CLIFFORD HARTMANN
4030 Lindell Blvd., St. Louis, Mo.



I BRING YOU
HAPPINESS



FOR

Love F. Thomas

Practitioner

Ohio

Entered as Second-Class Matter at Postoffice, St. Louis, Missouri. Accepted for mailing at special rate of postage provided for in Section 1103, Act of October 3, 1917, authorized August 29, 1924.





March 9, 1932.

David F. Thomas,
Proctorville, Ohio.

Dear Sir:

This verifies your reception of our early morning test program of February 19th, 1932, with 100 watts power. Our most distant report on this program came from Westport, Nova Scotia.

Thanking you for your co-operation, we are

Very truly yours,

RADIO STATION KGBX

By M. Calnan

KGBX

Daily Program Schedule

6 A. M. to 7 A. M., the Farm Service Hour—Farm topics, crop reports and time announcements.
 7 A. M. to 8 A. M., the Breakfast Hour—Current events, menus, weather report, time announcements.
 8 A. M. to 8:30 A. M., Remote Control Organ Program—Arthur Walker, Missouri Theatre.
 8:30 A. M. to 9 A. M.—For the Ladies—Fashions, Beauty Hints, Etc.
 11 A. M. to 11:30 A. M. Popular Music.
 11:30 A. M. to 12 M., Remote Control Organ Program, Ralph Foster and Arthur Walker, Missouri Theatre.
 12 M. to 1 P. M., Lunch Hour Program—Popular Music, Weather Report.
 1 P. M. to 2 P. M., Studio Program.
 4 P. M. to 4:30 P. M., Symphony Concert.
 4:30 P. M. to 5:30 P. M., Popular Merchants' Hour.
 5:30 P. M. to 6:30 P. M., Independent Merchants' Program, Lee and Betty Mansfield, Studio. Baseball News at 6 P. M.
 6:30 P. M. to 7:15 P. M., Dinner Hour Program—Selected Dinner Music.
 7:15 P. M. to 7:30 P. M., Big Sister and the Children's Story Book.
 7:30 P. M. to 8 P. M., Electrically Transcribed Program.
 8 P. M. to 9 P. M., Diversified Entertainment—Quartettes, Orchestras, Soloists, Etc. (Main Studio).
 9 P. M. to 10 P. M., Symphonic Hour (Studio).
 Police and Fire Alarms on All Programs.

Sunday Schedule

7:30 to 8:00 A. M.—Religious Program.
 8 to 8:30 A. M.—Y. M. C. A. Program.
 8:30 to 9:00 A. M.—Christian Endeavor Society Program.
 9:00 to 9:30 A. M.—Sacred Concert.
 9:30 to 10:00 A. M.—Betty Mansfield—Sunday Morning Visit.
 10:00 to 11:00 A. M.—Sunday Morning Concert.
 11:00 A. M. to 12:15 P. M.—Remote Control Church Services, First Baptist Church.
 12:15 to 1:00 P. M.—Remote Control Organ Program, Ralph Foster and Arthur Walker, Missouri Theatre.
 3:30 to 4:00 P. M.—Studio Program.
 4:00 to 4:15 P. M.—Christian Comfort Period—St. Paul's Lutheran Church.
 4:15 to 4:30 P. M.—Studio Program.
 4:30 to 5:00 P. M.—Church Services—Wyatt Park Christian Church.
 5:00 to 5:30 P. M.—Classical Program, Violin and Piano—The Jorban Sisters.
 5:30 to 7:30 P. M.—Studio Program—Transcriptions.
 7:30 to 8:30 P. M.—Orchestra—The Kampus Kings.
 8:30 to 9:00 P. M.—KGBX Symphonic Program.
 9:00 to 10:00 P. M.—Remote Control Program—Frog Hop Orchestra.
 Police and Fire Alarms on all Programs.

Special Features

Monday Night 8 to 9 P. M. KGBX Radio Players, Present the Theatre of the Air—9 to 9:30 P. M. The Four Toreadors.
 Tuesday Night 8 to 9 P. M. KGBX Minstrel Show.
 Wednesday Night, McCampbell Classical Trio.
 Thursday Night 6 to 6:15 P. M. Chief E. M. Mathews, St. Joseph Police Dept., "Chat with the Chief"—8 to 9 P. M. Popular Request Program—Lee Mansfield, Studio.
 Friday Night 9 to 10 P. M. Staff Frolic.
 Saturday Night 8:30 to 9 P. M. KGBX Mystery Girl.
 Sunday Night 7:30 to 8:30 P. M. Kampus Kings (All Collegiate Tunemiths).
 (Police and Fire Alarms on All Programs).

Remote Control

FROG HOP BALL ROOM—
 Where the best bands of the country are heard.
 MISSOURI THEATRE—
 Arthur Walker at the Organ.
 FIRST BAPTIST CHURCH—
 Church Service each Sunday morning.
 ST. JOSEPH AUDITORIUM—
 All Athletic Events.
 ROBIDOUX HOTEL—
 Special Entertainments.

THE STAFF

RALPH D. FOSTER
 President and General Manager
ARTHUR JOHNSON
 Secretary and Treasurer
ARTHUR WALKER
 Studio and Musical Director
GEORGE EARLE WILSON
 Chief Announcer and Continuity
E. M. KING
 Sales Manager
FRITZ BAUER
 Operator and Chief Engineer
FRED GARDNER
 Assistant Operator
MARY CALNAN
 Office Manager

THE ANNOUNCERS

GEORGE EARLE WILSON
RALPH FOSTER
ARTHUR WALKER
 "HERB" CALKINS

ABOUT KGBX

Station KGBX has recently installed a new transmitting apparatus of the latest type 100% modulation.

Station KGBX is one of 65 radio stations out of over 600 in the United States placed on the Honor Roll by the Federal Radio Commission—for EFFICIENCY.

KGBX was chosen by the readers of the St. Joseph Gazette as their favorite station.

KGBX operates twelve hours each day—dedicating this service and entertainment to St. Joseph and adjacent towns within a radius of seventy-five miles.

KGBX is locally owned and is dedicated to community service and entertainment.

KGBX thru the co-operation of the Police Department broadcasts all the important happenings immediately at the minute the information is received at the Police Headquarters—thereby creating a desire on the part of local radio owners to keep their radio tuned in on KGBX in order not to miss hearing any of these important local happenings.

KGBX broadcasts each evening at 6 P. M. a complete report on all baseball games—including the National and American Leagues—American Association and the Western League when they play during the day.

KGBX renders all this service to insure a large listening audience for KGBX thereby increasing the value of Radio Broadcast Advertising, so that when a message is sent over the air via KGBX the advertiser will be assured of thousands of listeners to that message.

There are over eleven thousand radio receiving sets in St. Joseph alone—not including the thousands outside of St. Joseph, but in this trade territory.

The 1930 Census shows a total population of 350,000 in St. Joseph and the adjacent counties comprising the trading area of retail merchants of St. Joseph . . . 75,000 families having a total of 40,000 radios. Over \$70,000,000 is spent yearly by the people of these adjacent counties with the retail stores of St. Joseph. KGBX covers this field intensively. Let your message reach this market thru KGBX.

- 1. THE KAMPUS KINGS
- 2. RALPH FOSTER and LEE MANSFIELD
- 3. GEORGE and ALECK
- 4. KGBX HARMONIZERS

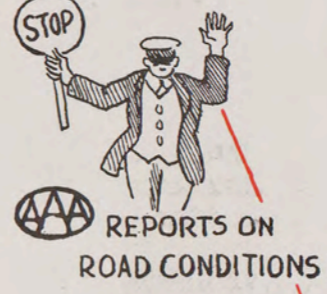


KGBX

Always a welcome guest in
75,000 HOMES



- 5. ARTHUR WALKER
- 6. McCAMPBELL TRIO
- 7. BILLIE LAMBORN
- 8. THE 4 TOREADORS



PLEASING ENTERTAINMENT

FRIENDLY SERVICE



Radio **KGBX** Station

NINETEENTH AND FREDERICK AVE.

ST. JOSEPH, MO.

RETURN POSTAGE GUARANTEED

JOSEPH, MO.
MAR 9
10--PM
1932

JOSEPH, MO.
MAR 9
10--PM
1932



David F. Thomas,
Proctorville, Ohio.



K L D S

INDEPENDENCE
MISSOURI

August 26 , 1925.

David F. Thomas,
Proctorville, Ohio.

Dear Radio Friend:

We were glad to receive your card reporting on reception of KLDS August 2nd. Have you heard from C. Edward Miller, pastor of the Stone church? If you have a number of questions, send them and we shall be glad to turn them over to someone that we know is well qualified to answer them.

In this city we have quite a number of churches each of which has its pastor. Independence is also the headquarters of our organization and the various principal church officers are located here. It will therefore be very easy for us to answer for your questions.

We shall be very glad to hear from you further.

Sincerely yours,

Director and Announcer KLDS

ABC/c

K L D S

441 METERS, 680 KILO-CYCLES

Thank You For Writing

We assure you that your communication is appreciated and ask you to accept this in lieu of a personal letter. We are always glad to receive reports concerning our programs and transmission, and those who participate in the programs are made happy to learn that their efforts to please you are successful.

K L D S, Formerly Station K F I X

K F I X was licensed by the Government in the summer of 1923 and has since maintained the regular broadcasting schedule given on this card. The station equipment was made and assembled in our own laboratory. It has a power output rated at 1,000 watts. Meissner circuit with Heising modulation. The apparatus is licensed under patents held by the American Telephone and Telegraph Company. Telephone lines connect the equipment at the station to the Radio Studio, The First Independence L. D. S. Church, and other places from which programs are broadcast.



Independence, Missouri

Independence is located ten miles east of Kansas City. It is the County Seat of Jackson County, noted for its farms, dairies, and orchards. It is the oldest city in western Missouri, and the original starting point for the Santa Fe Trail. It is a city of "homes and schools and churches," and is a live, progressive community. "Small enough to know you; yet large enough to serve you." It is the headquarters of the Reorganized Church of Jesus Christ of Latter Day Saints, owners of K L D S. The Campus of the Independence Institute of Arts and Sciences is known the country over by tourists and is a playground and community center.

Programs Published Weekly

Condensed programs are published weekly in *Radio Digest*, and in many newspapers. Detailed programs are printed each week in the two official church papers, the *Saints' Herald*, and *Zion's Ensign*. Sample copies of the *Herald* or *Ensign* will be sent free to any address upon request to Herald Publishing House, Independence, Missouri.

REORGANIZED CHURCH OF JESUS CHRIST OF LATTER DAY SAINTS
INDEPENDENCE, MISSOURI

THIS SIDE OF CARD IS FOR ADDRESS



K L D S

Regular Schedule

CENTRAL STANDARD TIME

Wave Length 441 Meters

TUESDAYS 8 p. m.
THURSDAYS 8 p. m.
SUNDAYS 11 a. m.
SUNDAYS 6:30 p. m.
SUNDAYS 9:15 p. m.

Beginning in September the 9:15
Sunday schedule will be changed
to 9 o'clock, and a Saturday night
schedule will be added.

268



K L D S

INDEPENDENCE
MISSOURI



456



David F. Thomas,

Proctorville, Ohio.



"Midland Broadcast Central"

MIDLAND BROADCASTING ©.

KANSAS CITY, MISSOURI

950 Kilocycles, 315.6 Meters

Broadcasting Schedules

DAILY, EXCEPT SUNDAY

- 6:30- 7:30—Monday, Wednesday, Saturday, Musical Program; Tuesday, Thursday, Friday, Morning Devotional.
- 7:00- 7:30—"Keeping Fit," Health Program.
- 7:30- 8:00—Educational and Entertaining.
- 9:00- 9:30—Monday, Thursday, Saturday, Music. Tuesday, Wednesday, Friday, Ida Bailey Allen.
- 9:40-10:00—Varied Program.
- 10:00-10:30—Sears-Roebuck "Homemakers' Hour."
- 10:40-11:30—Program Features, Organ Music.
- 12:10- 1:10—Dinnerbell Program (Junior R. F. D. Saturday).
- 3:30- 5:00—Matinee Program; News 4:55.
- 6:00- 7:00—Dinner Hour Program.
- 7:00- 8:00—Monday and Friday, Columbia Chain.
- 8:00-10:00—Columbia Chain and Local Programs.
- 10:00- 1:00—Tuesday, Thursday, Saturday, Varied except Thursday 10:00-11:00.

SUNDAY

- 7:30- 9:00—L. D. S. Features, Bible Study.
- 9:30-10:30—Linwood Christian Church.
- 10:30-11:00—L. D. S. Community Church.
- 2:00- 6:00—Columbia Chain and Local Programs.
- 6:00- 7:00—L. D. S. Radio Vespers.
- 7:00-10:00—Columbia Chain and Local Programs.
- 10:00-11:00—L. D. S. Studio Service.

OUR main studios and offices are located on the 16th floor of Kansas City's tallest hotel, the Aladdin. Other studios are located in the Journal-Rest Building, Sears-Roebuck Building, Wurlitzer Building and at Independence, Mo., where the plant or transmitter is situated.



659

NOTIFY
CORRESPONDENTS
0
CHANGE OF



THIS SIDE OF CARD IS FOR ADDRESS

Dear Radio Friend:

Thanks for your communication reporting reception of KMBC. We are always glad to hear from our listeners and hope you will write us again, telling us how you receive KMBC at your location.

Founded in Kansas City in 1921 and licensed in April, 1922, with call letters WPE (later with call letters KFIX and KLDS, since deleted), KMBC now operates as a public service broadcasting station, occupying all the time assigned it by the Government from 6:30 A. M. to 1:00 A. M.

Cordially yours,

MIDLAND BROADCAST CENTRAL

Mr. David F. Thomas,
Proctorville, Ohio.

STATION K M O X
VOICE OF ST. LOUIS

Operating Temporarily on Wave 261, 1150 Kilocycles.

Tentative Schedule to January 4th, 1926.

- | | | |
|--------------------------|---|--|
| 12 Noon to 1 P.M. | - | Organ Recital - Arthur L. Utt, Organist,
at the Kilgen Studio Organ. |
| 3 P.M. to 5 P.M. | - | Mixed Popular Concert. |
| 6 P.M. to 6:40 P.M. | - | Organ Recital - Arthur L. Utt at the
Kilgen Studio Organ. |
| 8 P.M. to 10 P.M. | - | Little Symphony Orchestra - David Bittner, Jr.
Conductor. |
| 10 P.M. to 10:30 P.M. | - | Mixed Program. |
| 10:30 P.M. to 11:30 P.M. | - | Dance Music by Gene Rodemich and his Brunswick
Recording Orchestra. |
| 11:30 P.M. to 1 A.M. | - | Mixed Program - including Gene Rodemich,
Arthur L. Utt on the Kilgen Studio Organ
and other popular numbers. |

Sunday, January 3rd, 1926.

- | | | |
|------------------|---|------------------------------|
| 7 P.M. to 8 P.M. | - | Skouras Bros' Hour. |
| 8 P.M. to 9 P.M. | - | The Principia - Station KFQA |

STAFF - Thomas P. Convey, Managing Director
David Bittner, Jr., Studio and Musical Director
Nate Caldwell, Chief Announcer
Arthur L. Utt, Organist
Miss Elizabeth Cueny, Publicity Director
W. A. Butler, Sales Manager.

We are swamped with mail and unable to answer your communications promptly, but give you the above schedule as a guide until such time as we can dictate a reply to your letter.

We have been temporarily assigned the only wave length available and trust you will bear with us on interference until such time as the Department of Commerce can assign us a better wave or clear the interference on the present wave.

Wishing you all a Happy New Year -

VOICE OF ST. LOUIS,
STATION KMOX,

TPC:T

Thomas P. Convey, Managing Director.

MEMBERS

C. F. BLANKE TEA & COFFEE COMPANY

BLANKE CANDY COMPANY

BROWN SHOE COMPANY

GLOBE DEMOCRAT PUBLISHING COMPANY

COLIN B. KENNEDY CORPORATION

GEO. B. KILGEN & SON, INC.

MAYFAIR HOTEL

MERCHANTS EXCHANGE OF ST. LOUIS

ST. LOUIS RADIO TRADES ASSOCIATION

SKOURAS BROS. ENTERPRISES, INC.

STARK BRO'S NURSERIES & ORCHARDS CO.

WAGNER ELECTRIC CORPORATION

F. C. TAYLOR FUR COMPANY

ST. LOUIS SOUTHWESTERN RAILWAY (COTTON BELT)

DAVIS REALTY MORTGAGE BOND COMPANY

ST. LOUIS' CHRISTMAS GIFT TO THE NATION

The Voice of St. Louis *Inc.*
broadcasting
Christmas Greetings



*May Happiness and Prosperity be
with you each day of the coming year*

*A cordial invitation
is extended to you to
visit our Studios in
the Hotel Mayfair
or our Station at Kirkwood, Mo.
at your convenience*

Thos P Convey
Managing Director

OFFICES AND STUDIOS

Hotel Mayfair
ST. LOUIS, U.S.A.



374

562



Mr David T Thomas
Proctorville
Ohio

From **W D A F**

The Kansas City Star

"NIGHT-HAWKS"

"YOU CAN WIN WITH A SMILE"

Introduced by

Leo Fitzpatrick



**"THE
MERRY
OLD
CHIEF"**

Post Card

ADDRESS ONLY

PLACE
STAMP
HERE

"You Can Win With A Smile"

By W. R. Williams

Writer of "Don't You Remember The Time."

Copyright MCMXXV by Will Rossiter, Chicago, Ill. International Copyright secured. Francis, Day & Hunter, London and Paris Agents. J. Albert & Son, Sydney, Australia.

1

'Twas a wise old owl that said,
That we might as well be dead,
As to be out of date, or out of style.
If we want to "sit in,"
With the "big game" to win,
We must greet all we meet with a smile.

CHORUS

Though the clouds may be gray,
They will soon roll away,
And the sunshine will come peeping through;
So just cheer up and smile,
For it's always worth while,
Though sometimes we're weary and blue.
It's the man with the pluck,
Not the one with hard luck,
Whom the world's glad to add to his pile,
So dig in, do your best, put yourself to the test
All the rest you can win with a smile.

2

Let us scatter 'long the way,
Seeds of kindness every day,
And the harvest we'll reap in just a while.
For a true friend in need,
Is a true friend indeed,
So let's sweeten the world with a smile.

NOTE! You can secure the complete sheet music of this new song from your local Music Dealer, 30 cents, or direct from Will Rossiter, "The Chicago Publisher."

W D A F

365.6 Meters.
(Central Standard Time.)

THE KANSAS CITY STAR Kansas City, Mo.

WEEKLY SCHEDULE.

Musical matinee programs daily except Sunday, 3:30 to 4:30 o'clock.

School of the Air programs, daily except Sunday, 6 to 7 o'clock.

Marketgram, weather forecast, time signal and road report, daily except Sunday, 5:50 to 6 o'clock.

Nighthawk Frolics, nightly except Sunday, 11:45 p. m. to 1 a. m.

Religious service or band concert Sunday afternoon, 4 to 5 o'clock.

International Sunday School lesson, Dr. Walter L. Wilson, Sunday, 5 to 5:30 o'clock.

Regular nightly programs, Monday, Wednesday and Friday, 8 to 9:30 o'clock.

Baseball scores daily, 3:30, 4, 4:30, 5 and 6 o'clock.

Weekly child talent program, 5 to 5:30 o'clock, Tuesday.

Weekly Boy Scout program, 5 to 5:30 o'clock, Monday.

WDAF

THE KANSAS CITY STAR'S

NIGHTHAWKS

"The Enemies of Sleep"

This is to certify that

*is a member of The Kansas City Star's
NIGHTHAWKS and has been granted an official
charter from WDAF.*

Signed

Les Fitzpatrick

Chief Nighthawk The Kansas City Star.



150

RETURN IN FIVE DAYS TO

THE KANSAS CITY STAR

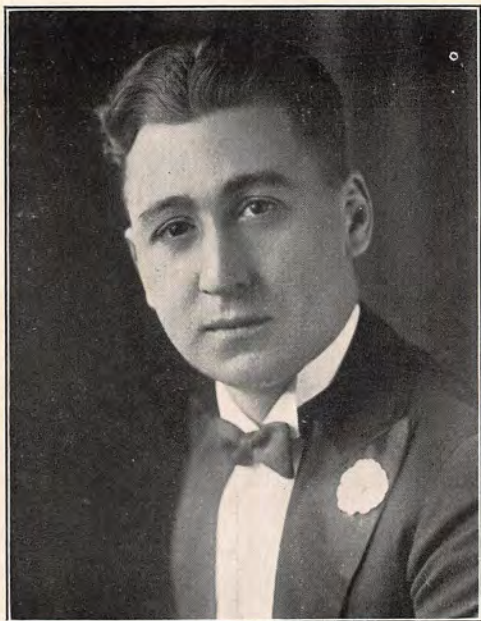
KANSAS CITY, MO.



338



David F. Thomas,
Proctorville,
Ohio



BILLY KNIGHT

(THE LITTLE OLD PROFESSOR)

TO MY RADIO FRIENDS
from **BILLY KNIGHT**

STUDIO DIRECTOR, RADIO STATION W. E. B.

BENSON RADIO CO.,

920 PINE STREET, ST. LOUIS, MO.

Broadcasting on Monday, Wednesday and Saturday Nights

98



ADDRESS
YOUR MAIL
TO
STREET AND
NUMBER



Sincerely yours,

Billy Knight

Mr David Thomas

Name _____

Proctersville

Address _____

Ohio

City _____

State _____

Kentwood Arms, Springfield, Mo.—10



Kentwood Arms Hotel is new, modern, and fire-proof. Located in the heart of the city, surrounded by acres of shade. Beautifully furnished, and well operated. Has Ballroom and Roof-garden. Hickory Hills fine 18-hole Golf Course operated in connection.

SPRINGFIELD
JAN 28
4 PM
1927
MO.

10957 N
611
POST
CARD



Thanks for your recent message regarding programs over Station WIBM in this hotel.

Next summer you must come down to the Ozarks to visit our hills, big springs, caves, rivers and the Shepherd of the Hills Country. Our roads are excellent and here at the Kentwood Arms we will provide you with information about interesting places and ample parking space for your car.

CARL M. THOMAS, Manager
THE KENTWOOD ARMS
— Home of —
WIBM - 215.7 meters

David Thomas
62. S. Washington
Delaware
Ohio.

E. C. PROPP CO., MILWAUKEE

Radio Broadcasting Station

W I L

Saint Louis, Missouri

Owned and operated by Benson Radio Broadcasting Company

DATE February 24, 1928.

We appreciate your report on our program and confirm your reception.

The Benson Radio Corporation have been identified with Radio Broadcasting since the very infancy of the industry and we are pleased to serve you. When in St. Louis we cordially invite you to visit our Studio and when you find it convenient we trust you will give us other reports on our programs.

Very truly,



Managing Director.



THIS SIDE OF CARD IS FOR ADDRESS

Mr. David F. Thomas,
Proctorville,
Ohio.

THE CHURCH SCHOOL—9:30 to 10:50 Sunday Mornings

Our School is recognized as one of the best in St. Louis, and has an enrollment of more than 1000 students, and a staff of nearly 100 teachers and officers. It is thoroughly graded in ten departments, providing a place for every member of the family from the youngest to the oldest, with a special Department on Home Co-operation for those who cannot attend in person.

The International Closely Graded Lesson System is used with elective courses for young people and adults.

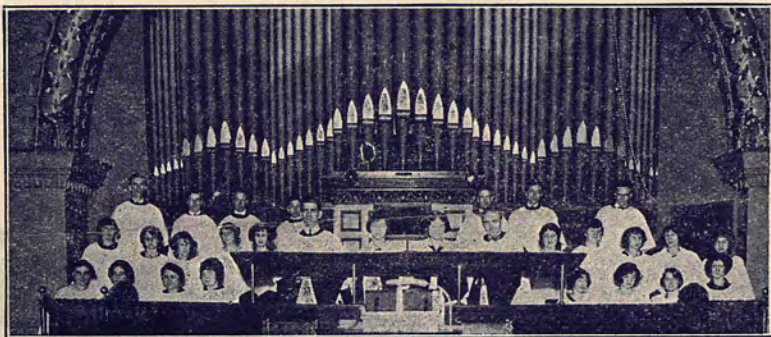
Membership in the School has special privileges in the Institutional Building. We have one of the best Sunday School Orchestras in St. Louis.

Special Activities

A fine gymnasium and a beautiful swimming pool add to the attractiveness of the plant. They are a part of a wonderful institutional building given to the church by Mrs. Mary E. Culver. An athletic director keeps the boys busy three afternoons and evenings a week, while the girls, under professional supervision, use the equipment on alternate days.

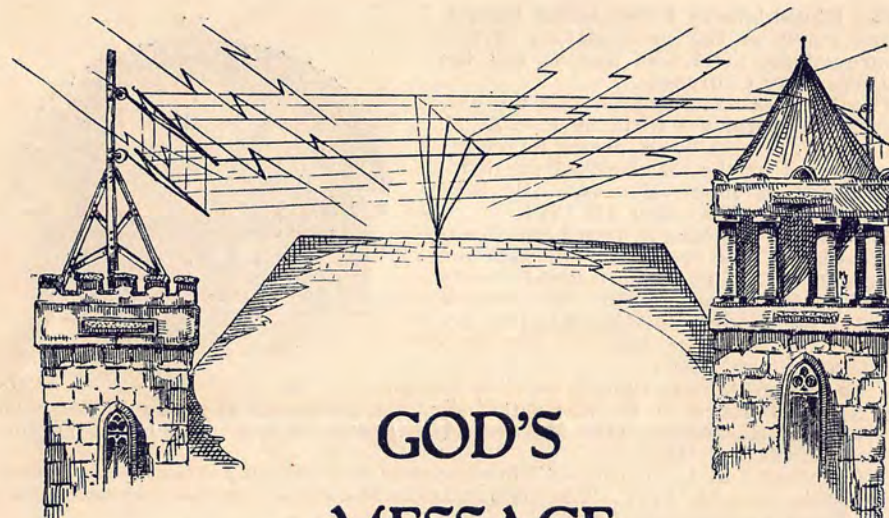
Kingshighway is always represented in the Saint Louis Sunday School Athletic Association and other organizations by strong teams, and the players are known for their clean habits and good sportsmanship. The recreational work of the church is under the supervision of the associate minister.

Young People's Music at Kingshighway



Kingshighway Karol Klub was organized in the fall of 1922 to interest the young people of the church in good church music and to aid at the evening service. Dr. T. W. Ross is the leader, and under his capable direction, the Klub has progressed rapidly until today it is an excellent musical organization.

The Sunday School Orchestra has for many years been one of the notable features of Kingshighway life. Mr. Walton W. Steele is the moving spirit in the organization. Recently a Junior Orchestra was organized with Mr. Douglas Wood as director.



GOD'S MESSAGE IN THE AIR

Published by
Radiophone Station WMAY

Owned and operated by
The Kingshighway Presbyterian Church
Kingshighway and Cabanne Ave
St. Louis, Mo.

HISTORICAL SKETCH

The Kingshighway Presbyterian Church is the result of the consolidation of two congregations, the Lucas Avenue and the Kingshighway Churches.

The Lucas Avenue Church was the outgrowth of efforts put forth by Rev. C. H. Bell, D. D., as missionary pastor under the appointment of the Cumberland Presbyterian Board of Home Missions. Dr. Bell began his work November 17, 1874.

The Chapel Building at Lucas and Channing avenues was opened for worship December 2, 1877. The church was formally organized February 6, 1873. The cornerstone of the Church Building was laid October 3, 1891, and the building was dedicated December 9, 1894.

The Kingshighway Church owes its beginning to the sacrificing efforts of the Rev. Taylor Bernard, D. D., who gathered a small company of people in the home of Mr. John R. Griffith, 1126 Bayard Avenue, and effected a temporary organization February 3, 1897.

The Chapel at the corner of Kingshighway and Cabanne Avenue was opened for worship May 16, 1897. The congregation was known as the Raymond Place Cumberland Presbyterian Church.

The church was formally organized June 6, 1897.

On May 16, 1903, the name of the organization was changed to Kingshighway Cumberland Presbyterian Church.

As a result of the union of the Presbyterian Church in the United States of America and the Cumberland Presbyterian Church in 1906, both churches were known thereafter as the Lucas Avenue and Kingshighway Presbyterian Churches.

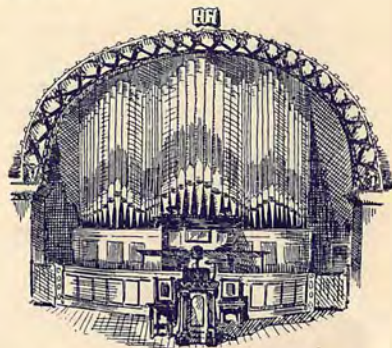
Consolidation between the two was effected in May, 1908, and the cornerstone of the present building was laid October 17th of the same year.

A CHURCH WITH A VISION

Because of its habit of planning carefully for the future, and providing itself with the material means so necessary nowadays for a church to properly serve the community, Kingshighway has come to be called by many "The Church With a Vision." When the possibilities of radio broadcasting began to attract attention, it was not surprising, therefore, to find Kingshighway ready to adopt this new method of sending the word of God to whosoever would listen, whether he be in the church or in his own home. Early in the fall of 1922 the official boards of the church took action that resulted in the opening on November 11th of the same year of station WMAV.

Early Difficulties

The necessity of absolute economy made it advisable for the church to build a transmitter, rather than buy one. Several of the young men of the church, interested in radio development and electrical engineering, offered their services, and subsequently built the transmitter. Building it was comparatively easy; making it function properly was another matter. Radio engineers were few and hard to get. Many radio enthusiasts offered suggestions and some contributed their time. By the summer of 1923 it was found the set was far from satisfactory, and no solution worth while had been found. Those in charge decided that if the transmitter was ever to work properly under their direction, they would have to know more about it. The summer was therefore spent in studying the problems met during the winter, and the transmitter was torn down and completely rebuilt. Additional motor-generator equipment was purchased, and after a time the station went back on the air. The time spent in working over it had not been wasted; improvement in transmission was reported from every side. Letters began to pour in from every state in the Union and from Canada, Cuba and Mexico. Visitors began calling in to see the station. Requests for broadcasting schedules came from everywhere. Magazine articles appeared, describing the station and the work being done. We became justly proud of our broadcasting station.



A Brief Description of the Transmitter

Station WMAV operates on 280 meters, using 100 watts of power in the antenna circuit, provided by two fifty-watt vacuum tubes. The modulating circuit also uses two fifty-watt vacuum tubes and one fifty-watt tube is used as a speech amplifier. Two steps of power amplification are used in the microphone circuits. Filaments of the vacuum tubes are heated by sixty-cycle alternating current, and the 1000-volt plate current is supplied by a battery of direct-connected motor generators. Aerial and counterpoise are used, as well as a tuned ground. Radiation varies between five and six amperes.

The station is regularly heard over a radius of a thousand miles, and frequently reaches the Pacific coast.

Broadcasting Schedule

Sunday:

11:00 A. M. Regular Sabbath Morning Service.
3:00 P. M. Special Radio Bible Class.
8:00 P. M. Regular Sabbath Evening Service.

Tuesday:

7:00 P. M. Special Mid-Week Program.
(Central Standard Time)

Special Programs are broadcasted at irregular intervals, full announcement being made by radio during preceding broadcasts.

Sunday Afternoon Radio Bible Class

This was organized in the fall of 1923. It is arranged especially for shut-ins and those not able to attend Sunday School, but all listeners-in are welcome, and invited to join. It is the aim to make the personal contact as close as possible. A song book is mailed to each member that he may join in singing with the class. Questions mailed in by the members of the class are answered the following Sunday. The class is supervised and taught by members of Kingshighway Church School, each leader being responsible for one month's activities.

KINGSHIGHWAY PRESBYTERIAN CHURCH

Shepherds Over the Flock

Lucas Avenue	Kingshighway
Claiborne H. Bell, D. D., 1874-1881	Taylor Bernard, D. D., 1897-1903
William H. Black, D. D., L. L. D., 1881-1890	Columbus Polk Goodson, 1903-1908
Baxter P. Fullerton, D. D., L. L. D., 1891-1906	
William T. Rodgers, D. D., 1907-1908	

Kingshighway Presbyterian Church

Merle H. Anderson, D. D., 1909-1911
Arthur Lee Odell, D. D., 1912-1918
G. A. Hulbert, D. D., 1918-1921
Henry H. Forsyth, D. D., L. L. D., 1922-

The Ministers of Kingshighway

Rev. Henry H. Forsyth, D. D., was elected pastor of Kingshighway Presbyterian Church January 25, 1922. He was educated in the public schools of Pittsburgh, Pittsburgh Central High School, University of Pittsburgh, Princeton Theological Seminary, and New College, Edinburg, Scotland. He came to St. Louis from Ben Avon, Pennsylvania, where he was pastor for eighteen years.

Rev. Owen W. Pratt has been associate pastor of Kingshighway Presbyterian Church since June 15, 1922. He is a graduate of Wabash College and the Western Theological Seminary. While a student in the seminary he was assistant to the pastor of the North Presbyterian Church in Pittsburgh.



Rev. Henry H. Forsyth, D. D.

RETURN TO
5010 CABANNE AVENUE
SAINT LOUIS

147



REU
ROL
-JO



Mr. David F. Thomas,

Proctorville, Ohio.

CHARLES FILLMORE, *President*
MYRTLE FILLMORE, *Vice-President*

LOWELL FILLMORE, *Treasurer*
W. RICKERT FILLMORE, *Secretary*

UNITY SCHOOL OF CHRISTIANITY
UNITY BUILDING, 917 TRACY
KANSAS CITY, MISSOURI

February 20, 1925.

Mr. David F. Thomas
Proctorville
Ohio.

Dear Friend:-

We have received your card of appreciation of our Radio Service and thank you most sincerely for your courtesy in writing us.

It affords us great satisfaction when those who listen in to our broadcasting are kind enough to report direct to us. We look upon it as friendly cooperation.

We are inclosing a copy of our latest program and trust you will enjoy many of our programs and services.

Very cordially yours,

UNITY SCHOOL OF CHRISTIANITY.

LF/G

Radio Department.

WOQ,
BROADCASTING STATION
OF

UNITY SCHOOL OF CHRISTIANITY

Headquarters, 917 Tracy Avenue, Kansas City, Mo.

R A D I O S E R V I C E

Broadcasting Station	WOQ
Wave Length	278 Meters
Power (at present)	500 Watts

PROGRAM

Central standard time

Sunday Services 11 a.m. to 12:30 p.m.
 7 p.m. to 7:45 p.m.

Tuesday

Devotional Musical Program
 8 p.m. to 9 p.m.

Thursday

Unity Inn Educational Program
 7:15 p.m. to 7:45 p.m.

Saturday

Musical Program 8 p.m. to 9 p.m.

Musical Healing Service
 10 p.m. to 11 p.m.

We also broadcast Grand Avenue Temple Service,
Sunday 8 p.m. to 9:15 p.m.

72

UNITY
917 TRACY AVENUE
KANSAS CITY, MO.

260



Mr. David F. Thomas
Proctorville
Ohio.

Dear Radio Friend:

The Radio Digest Magazine, 510 North Dearborn Street, Chicago, Illinois, is starting a contest for the most popular announcer in the U.S.A. We are very anxious for our announcer, J. M. Witten, to win the Gold Cup. We feel that he is the most popular announcer. Our thousands of letters say so.

One ballot is printed in each weekly copy of the Radio Digest. These can be purchased for ten cents each at the newsstands, or you can send direct to the publishers for the magazines. It is a fine radio magazine, and you will like it. The official family of Station WOS will appreciate it if you will vote for our announcer, J. M. Witten of WOS, Jefferson City, Missouri. (Jefferson City, Miz-zou-ree!)

For each four consecutively numbered ballots sent in at the same time a bonus of ten votes will be allowed. For each eight consecutively numbered ballots sent in at the same time, a bonus of twenty-five votes will be allowed. For each twelve consecutively numbered ballots sent in at the same time, a bonus of fifty votes will be allowed. For each sixteen consecutively numbered ballots sent in at the same time, being a complete set, a bonus of seventy-five votes will be allowed.

If you cannot secure copies of the Radio Digest, and desire to assist our announcer in this way, you may send your contribution to us and we will buy the papers and cast the votes for you.

This contest runs for sixteen weeks. You may send your coupons to WOS or send them direct to Chicago. Ballot No. 1 was printed in the issue of May 24. Tell your friends.

Yours for "The Cup",

Arthur T. Nelson

State Marketing Commissioner.

JUNE RADIO PROGRAMS.

RADIOPHONE WOS, STATE MARKETING BUREAU, JEFFERSON CITY, MISSOURI.
440.9 Meters-----680 Kilocycles-----Central Standard Time.

Sunday, June 1.

8:00 P.M. Religious services of the Methodist Church, Rev. J. E. McDonald, Pastor, by line telephony from the church.

Monday, June 2.

8:00 P.M. Oration by George C. Dyer of Warrenton, Missouri, 8:20 P.M. Band concert by the Missouri State Prison Band and Harry M. Snodgrass, pianist, through the courtesy of H. F. Hoffman, Chairman, and J. S. Crawford, Warden.

Wednesday, June 4.

8:00 P.M. Address: "Control of Sheep Parasites" by Dr. J. W. Connaway, Professor of Veterinary Science, Missouri College of Agriculture, Columbia. 8:20 P.M. Barn dance tunes played by the Old Tyme String Trio, Louie Barton, first fiddle, George Schrimpf, bass fiddle and Bryan Williams, guitar.

Friday, June 6.

8:00 P.M. Samuel M. Jordan of the Missouri State Board of Agriculture in a practical farm address on "Emergency Crops". 8:20 P.M. Varied musical program by talent from Versailles, Missouri, under the direction of Mrs. Thomas B. Scott.

Sunday, June 8.

8:00 P.M. Union open air religious services broadcast from the Capitol lawn. Music by the Missouri State Prison Band.

Monday, June 9.

8:00 P.M. Address: "Tragedies of the Missouri Penitentiary" by J. Kelly Pool, Pardon and Parole Commissioner of Board of Penal Institutions. Band concert by the Missouri State Prison Band and Harry M. Snodgrass, pianist, through the courtesy of H. F. Hoffman, Chairman, and J. S. Crawford, Warden.

((Note: Radiophone Station WOS has consented to let the Kansas City Star use its wave of 441 meters during the Republican National Convention. WOS will broadcast market reports on 441 meters during that period. No program Wednesday night, June 13.))

Friday, June 13.

7:45 P.M. Jewell Mayes of the Missouri State Board of Agriculture in a conversation entitled: "A Few More Missouri Secrets". 8:00 P.M. Address by Mr. George A. Pickens, General Secretary of the Greater Missouri Association. 8:20 P.M. Musical program the details of which will be announced by radiophone several days in advance.

Sunday, June 15.

8:00 P.M. Union open air religious services broadcast from the Capitol lawn. Music by the Missouri State Prison Band.

Monday, June 16.

8:00 P.M. Two addresses: "Destruction of Trees and Forests" and "Insecticides and Fungicides" by Arthur T. Nelson, State Marketing Commissioner. 8:20 P.M. Musical program by the Missouri State Prison Orchestra and Harry M. Snodgrass, pianist, through the courtesy of H. F. Hoffman, Chairman, and J. S. Crawford, Warden.

(over)

Wednesday, June 18.

8:00 P.M. Address: "Caring for Milk and Cream on the Farm" by I. G. Gibson, Extension Specialist in Dairy Husbandry, Missouri College of Agriculture, Columbia. 8:20 P.M. Old time barn dance tunes by the String Trio, composed of Louie Barton, George Schrimpf and Bryan Williams.

Friday, June 20.

7:45 P.M. Dr. Homer A. Wilson, State Veterinarian of the Missouri State Board of Agriculture on "Hydrophobia or Rabies as a Menace to Animals and Folks". 8:00 P.M. Address by Mr. George A. Pickens, General Secretary of the Greater Missouri Association. 8:20 P.M. Musical program by the Hermann, Missouri Juvenile Orchestra.

Sunday, June 22.

8:00 P.M. Union open air religious services broadcast from the Capitol lawn. Music by the Missouri State Prison Band.

Monday, June 23.

8:00 P.M. Address: "Uncle Sam's Movies" by Arthur T. Nelson, State Marketing Commissioner. 8:20 P.M. Musical program by Rosalind McPherson, age twelve years, and Staunton Calvert, age eleven years, members of the Rose Venable Junior Music Club, Columbia, Mo., assisted by Mrs. James T. Quarles, contralto.

Wednesday, June 25.

8:00 P.M. Address: "Feed and Care of Dairy Cows during the Summer Months" by A. C. Ragsdale, Professor of Dairy Husbandry, Missouri College of Agriculture, Columbia, Missouri. 8:20 P.M. Barn dance music by A. A. Taylor's String Band of Mendon, Missouri.

Friday, June 27.

8:00 P.M. John Ashton of the Missouri State Board of Agriculture "In The Interesting Story of Shorthorn Cattle in Missouri Prior to the Civil War". 8:20 P.M. Musical program the details of which will be announced by radiophone several days in advance.

Sunday, June 29.

8:00 P. M. Union open air religious services broadcast from the Capitol lawn. Music by the Missouri State Prison Band.

Monday, June 30.

8:00 P.M. Address: "Developing a \$100,000,000 Industry" by Arthur T. Nelson, State Marketing Commissioner. 8:20 P.M. Musical program the details of which will be announced by radiophone several days in advance.

Note: 9:00 Estimated receipts Chicago hog market; Eastern meat trade. 10:00 Weather; St. Louis, Omaha, Chicago and Kansas City hog market; Chicago and St. Louis optional grain opening. 11:00 Kansas City, Omaha and St. Joseph flashes; St. Louis live stock market; Chicago live stock market; Chicago and St. Louis optional grain; 12:00 Live stock market reports; Chicago and St. Louis optional grain. 1:00 Weather; poultry and butter and egg report; St. Louis cash and optional grain market close. Closing markets for Saturday an hour earlier. 5:05 P.M. Monday and Friday, home readings and stories presented by Mrs. Gertrude Nelson. Marketgram daily except Tuesday and Saturday.

W O S

STATE MARKETING BUREAU

ARTHUR T. NELSON, COMMISSIONER.

MISSOURI STATE MARKETING BUREAU
ARTHUR T. NELSON, COMMISSIONER
JEFFERSON CITY, MO.

30



David F. Thomas
Proctorville
Ohio