

# World- Radio

## STATION IDENTIFICATION PANELS



**JUNE 1935**

price one shilling



## WORLD-RADIO

*World-Radio* is published by the British Broadcasting Corporation, and its technical and other articles are authoritative. It issues full summaries of the programmes of the chief Continental stations, as well as of some American stations which can normally be heard in England, and schedules of the Home and Empire programmes. In addition, the most interesting items of the following week's programmes are prominently set out.

In addition, *World-Radio* includes authoritative tables of long, medium, and short wavelengths, short-wave notes and reports, and a section designed to encourage the study of foreign languages. It also provides facilities for the identification of unknown foreign stations, inquiries concerning which are answered either by post or (free of charge) in the columns of the paper.

It is indispensable to everyone who is interested in foreign stations.

*World-Radio* is published every Friday, price 2d.

# WORLD- RADIO

STATION IDENTIFICATION

PANELS

---

ISSUED BY

THE BRITISH BROADCASTING

CORPORATION

BROADCASTING HOUSE, W.1



## PREFACE

*The following Station Identification Panels, all of which have already appeared in World-Radio, have been revised in accordance with the latest information. Readers will find both frequencies and wavelengths given, the former in kilocycles per second (kc/s) and the latter in metres. A kilocycle indicates one thousand cycles. (For an explanation of a cycle see under 'Alternating Current' in the B.B.C. booklet, Technical Tables and Glossary, price 1s.) The frequencies are those allotted under the Lucerne Plan.*

*Power is also expressed in kilowatts (one thousand watts), the Copenhagen Rating being quoted in all cases where the revised figures are available. Thus, whenever 'COPENHAGEN' appears in brackets after the word 'POWER', it indicates that the new rating is shown. It should be noted that carrier-wave power only is given; the maximum modulation percentage usually falls between 70 per cent and 90 per cent.*

*These panels include all European main stations accessible to the great majority of distant listeners, as well as some of the more important relay stations. As, however, most of the latter are of small power, and merely relay the programmes of main stations, they are given in a supplementary form in the appropriate main-station panels.*

*Particulars of a few American medium-wave stations, as well as of some of the more frequently received short-wave stations, will be found in the Appendix, pp. 42-6.*

*It will be appreciated that in the Continental broadcasting stations changes are frequently taking place, whether of a major kind, such as the establishment of a new station, or of lesser importance, as, for example, an alteration of frequency. In order, therefore, to keep the information contained in this publication strictly up to date, periodical reference to the pages of World-Radio, the progenitor of this book, is practically essential. In particular, minor variations in the frequencies of stations are constantly occurring, but the latest official figures for these are given in the Frequencies and Wavelengths Page in World-Radio.*

*The figures given for bearings of the stations represent the bearings from true north in degrees, clockwise, from 0° to 360°, with London as the centre.*



# INDEX

	PAGE		PAGE
Åbo ( <i>see</i> Helsinki)		Copenhagen .. ..	14
Alexandria (No. 1) ..	7	Cork (6CK) .. ..	14
Alexandria (No. 2)		( <i>see also</i> Athlone)	
( <i>see</i> Alexandria No. 1)		Cracow .. ..	15
Algiers (Radio PTT) ..	7	Danzig .. ..	15
( <i>see also</i> Paris PTT)		( <i>see also</i> Königsberg)	
Alpes-Grenoble (PTT) .	7	Daventry (GSA, GSB,	
( <i>see also</i> Paris PTT)		etc.) (short-wave) ..	44
Athlone .. ..	8	Deutschlandsender	
Atlantic City (WPG) ..	42	(Königs Wusterhausen)	15
Barcelona (EAJ 1) ..	8	Dornbirn	
Bari .. ..	8	( <i>see</i> Vienna)	
Basle ( <i>see</i> Schweiz. Landessender)		Dresden ( <i>see</i> Leipzig)	
Belgrade .. ..	9	Dublin (2RN) .. ..	16
Bergen .. ..	9	( <i>see also</i> Athlone)	
Berlin .. ..	9	Émetteur National	
Berne		Suisse Romand (Sottens)	16
( <i>see</i> Schweiz. Landessender)		Fécamp ( <i>see</i> Radio Normandie)	
Beromünster		Finnmark (Vadsø) ( <i>see</i> Oslo)	
( <i>see</i> Schweiz. Landessender)		Flensburg ( <i>see</i> Hamburg)	
Björneborg ( <i>see</i> Helsinki)		Florence (IFI) .. ..	16
Boden ( <i>see</i> Stockholm)		Frankfurt-am-Main ..	17
Bodø ( <i>see</i> Oslo)		Fredrikstad ( <i>see</i> Oslo)	
Bolzano (IBZ) .. ..	10	Freiburg-im-Breisgau	
Bombay (VUB) (short-		( <i>see</i> Frankfurt)	
wave) .. ..	43	Geneva	
Bordeaux-Lafayette (PTT)		( <i>see</i> Émetteur National Suisse	
( <i>see</i> Paris PTT)		Romand)	
Bordeaux Sud-Ouest ..	10	Genoa (IGE) .. ..	17
Bound Brook (WJZ) ..	42	Gleiwitz ( <i>see</i> Breslau)	
Bound Brook (W3XAL)		Göteborg .. ..	18
(short-wave) .. ..	43	( <i>see also</i> Stockholm)	
Bowmanville (VE9GW)		Graz .. ..	18
(short-wave) .. ..	43	( <i>see also</i> Vienna)	
Bratislava .. ..	10	Hamar ( <i>see</i> Oslo)	
Bremen		Hamburg .. ..	18
( <i>see</i> Hamburg)		Hanover .. ..	19
Breslau .. ..	11	( <i>see also</i> Hamburg)	
Brno .. ..	11	Havana (COC) (short-	
Brussels (No. 1—French)	12	wave) .. ..	45
Brussels (No. 2—Flemish)	12	Heilsberg	
Bucharest .. ..	12	( <i>see</i> Königsberg)	
Budapest (No. 1) ..	13	Helsinki (Helsingfors) ..	19
Budapest (No. 2)		Hilversum .. ..	19
( <i>see</i> Budapest No. 1)		Hörby	
Cairo (No. 1) .. ..	13	( <i>see</i> Stockholm)	
Cairo (No. 2) ( <i>see</i> Cairo No. 1)		Huizen .. ..	20
Calcutta (VUC) (short-		Innsbruck	
wave) .. ..	44	( <i>see</i> Vienna)	
Caracas (YV2RC) (short-		Istanbul (Constantinople)	20
wave) .. ..	44	Jakobstad	
Cassel		( <i>see</i> Helsinki)	
( <i>see</i> Frankfurt)		Juan-les-Pins (Radio Côte	
Chicago (W9XF) (short-		d'Azur) .. ..	20
wave) .. ..	44	Kaiserslautern	
Christiansand ( <i>see</i> Oslo)		( <i>see</i> Frankfurt)	
Cologne .. ..	14	Kalundborg .. ..	21
Constantinople		( <i>see also</i> Copenhagen)	
( <i>see</i> Istanbul)		Katowice .. ..	21
		Kaunas (Kovno) ..	21

# INDEX—continued

	PAGE		PAGE
Klagenfurt		Paris (Eiffel Tower)	
( <i>see</i> Vienna)		( <i>see</i> Paris PTT)	
Königsberg (Heilsberg) .	22	Paris (Poste National	
Königsberg (No. 2)		Radio Paris) .. ..	30
( <i>see</i> Königsberg Heilsberg)		( <i>see also</i> Paris PTT)	
Kootwijk		Paris (Poste Parisien) ..	30
( <i>see</i> Huizen)		Paris (PTT) .. ..	31
Košice .. ..	22	Paris (Radio Colonial)	
Kovno ( <i>see</i> Kaunas)		(short-wave) .. ..	45
Kuldiga ( <i>see</i> Riga)		( <i>see also</i> Paris PTT)	
Lahti .. ..	22	Paris (Radio L.L.) ..	31
( <i>see also</i> Helsinki)		Pecs	
Lausanne		( <i>see</i> Budapest No. 1)	
( <i>see</i> Émetteur National Suisse		Philadelphia (W3XAU)	
Romand)		(short-wave) .. ..	45
Leipzig .. ..	23	Pietarsaari (Jakobstad)	
Leningrad (RV53) ..	23	( <i>see</i> Helsinki)	
Liepāja ( <i>see</i> Riga)		Pittsburgh, East (KDKA)	42
Lille (Radio PTT Nord)	23	Pittsburgh, East (W8XK)	
( <i>see also</i> Paris PTT)		(short-wave)	
Limoges (Radio PTT)		( <i>see</i> Pittsburgh KDKA)	
( <i>see</i> Paris PTT)		Pori (Björneborg)	
Linz ( <i>see</i> Vienna)		( <i>see</i> Helsinki)	
Lisbon (Emissora Nac-		Porsgrund	
ional) .. ..	24	( <i>see</i> Oslo)	
Ljubljana .. ..	24	Poznań (Posen) .. ..	32
Łódź .. ..	24	Prague (No. 1) .. ..	32
( <i>see also</i> Warsaw)		Prague (No. 2)	
Lwów .. ..	24	( <i>see</i> Prague No. 1)	
Lyons-la-Doua (PTT) ..	25	Rabat (No. 1) .. ..	32
( <i>see also</i> Paris PTT)		Rabat (CNR) (short-wave)	
Lyons (Radio Lyon) ..	25	( <i>see</i> Rabat)	
Madona .. ..	25	Radio Normandie (Fé-	
( <i>see also</i> Riga)		camp) .. ..	33
Madrid (EAJ7) .. ..	25	Rennes-Bretagne (PTT)	33
Magdeburg		( <i>see also</i> Paris PTT)	
( <i>see</i> Hamburg)		Reykjavik .. ..	33
Magyaróvár .. ..	26	Riga .. ..	34
( <i>see also</i> Budapest No. 1)		Rjukan ( <i>see</i> Oslo)	
Malmö		Rome (1RO) .. ..	34
( <i>see</i> Stockholm)		Rome (2RO) (short-wave)	45
Marseilles-Provence		( <i>see</i> Rome 1RO)	
(PTT) .. ..	26	Rome (3RO)	
( <i>see also</i> Paris PTT)		( <i>see</i> Rome 1RO)	
Milan (IMI) .. ..	26	Salzburg ( <i>see</i> Vienna)	
Milan (Vigentino) ( <i>see</i> Rome)		San Sebastian (EAJ8) ..	35
Miskolc		Schenectady (WGY) ..	43
( <i>see</i> Budapest No. 1)		Schenectady (W2XAD)	
Monte Ceneri .. ..	27	(short-wave) .. ..	45
Montpellier (PTT)		Schenectady (W2XAF)	
( <i>see</i> Paris PTT)		(short-wave) .. ..	46
Moravská-Ostrava ..	27	Schweizerischer Landes-	
Moscow (No. 1) .. ..	27	sender (Beromünster)	35
Motala .. ..	28	Seville (EAJ5) .. ..	36
( <i>see also</i> Stockholm)		Skamlebæk (OXY) ..	46
Munich .. ..	28	(short-wave)	
Naples (INA) .. ..	29	( <i>see also</i> Copenhagen)	
Notodden ( <i>see</i> Oslo)		Sofia .. ..	36
Nürnberg ( <i>see</i> Munich)		Sortavala ( <i>see</i> Helsinki)	
Nyiregyháza		Sottens	
( <i>see</i> Budapest No. 1)		( <i>see</i> Émetteur National Suisse	
Oslo .. ..	29	Romand)	
Palermo (IPA) .. ..	30		



**INDEX—continued**

	PAGE		PAGE
Stavanger ( <i>see Oslo</i> )		Turin (1TO) .. ..	39
Stettin ( <i>see Hamburg</i> )		Turin (No. 2)	
Stockholm .. ..	37	( <i>see Rome No. 1</i> )	
Strasbourg (Radio PTT)	36	Turku (Åbo) ( <i>see Helsinki</i> )	
( <i>see also Paris PTT</i> )		Vadsø ( <i>see Oslo</i> )	
Stuttgart .. ..	37	Vatican City (HVJ)	
Sundsvall ( <i>see Stockholm</i> )		(short-wave) .. ..	46
Sydney (VK2ME) .. ..	46	Vienna (Bisamberg) .. ..	40
(short-wave)		Viipuri (Viborg)	
Tallinn .. ..	38	( <i>see Helsinki</i> )	
Tampere (Tammerfors)		Vorarlberg	
( <i>see Helsinki</i> )		( <i>see Vienna</i> )	
Tartu ( <i>see Tallinn</i> )		Warsaw (No. 1) .. ..	40
Torun .. ..	38	Warsaw (No. 2)	
( <i>see also Warsaw</i> )		( <i>see Warsaw No. 1</i> )	
Toulouse-Pyrénées (PTT)	38	Wilno .. ..	41
( <i>see also Paris PTT</i> )		Zagreb .. ..	41
Toulouse (Radio) .. ..	39	Zeesen (DJA) .. ..	46
Trier ( <i>see Frankfurt</i> )		(short-wave)	
Trieste (1TS) .. ..	39	Zürich	
Trøndelag (Trondheim)		( <i>see Schweiz. Landessender</i> )	
( <i>see Oslo</i> )			

**ALEXANDRIA (No. 1)**

**Egypt**

FREQUENCY: 1122 kc/s WAVELENGTH: 267.4 m. POWER (COPENHAGEN): 0.25 kW.

DISTANCE FROM LONDON: 2,100 miles.

INTERVAL SIGNAL: Ticking of clock.

Man and woman announcers.

Announcements are made in Arabic, English, and French.

Closes down with the words 'Good night', followed by the Egyptian National Anthem 'Salem el Malek'.

**RELAY STATION**

Alexandria (No. 2): 1429 kc/s; 209.9 m.; 0.5 kW.

**ALGIERS (Radio PTT)**

**Algeria**

FREQUENCY: 941 kc/s WAVELENGTH: 318.8 m. POWER: 12 kW.

DISTANCE AND BEARING FROM LONDON: 1,030 miles; 170°.

CALL: 'Allô! Allô! Ici Radio PTT Alger [pronounced Al-zhay] du Gouvernement Général . . .!' Announcements are made in French and Arabic.

Man announcer.

Closes down with 'La Marseillaise'.

Independent programmes; also relays Paris (PTT) and other PTT stations.

**ALPES-GRENOBLE (PTT)**

**France**

FREQUENCY: 583 kc/s WAVELENGTH: 514.6 m. POWER (COPENHAGEN): 15 kW.

DISTANCE AND BEARING FROM LONDON: 515 miles; 146°.

OPENING SIGNAL: 'Air des Allobroges'.

CALL: 'Allô! Allô! Ici le Poste Radiotéléphonique de la Région des Alpes à Grenoble!'

Man and woman announcers.

Closes down with a few bars from the 'Air des Allobroges', followed by the usual French formula.

Relays Paris (PTT) and other PTT stations.



## ATHLONE

### Irish Free State

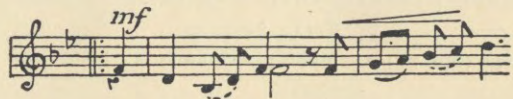
FREQUENCY: 565 kc/s WAVELENGTH: 531 m. POWER (COPENHAGEN): 60 kW.

DISTANCE AND BEARING FROM LONDON: 355 miles; 294°.

CALL (in Irish and English): 'Radio Atha Luain, Atha Cliath Agus Corcaigh!'

Woman announcer.

Closes down with the words 'Sin deire an chláir i gcóir na hoidhche anocht ó Bhaile-Atha-Cliath, Atha Luain, Agus Corcaigh', followed by one verse of the 'Soldier's Song'.



#### RELAY STATIONS

Dublin: 1348 kc/s; 222.6 m., 0.5 kW.

Cork: 1240 kc/s; 241.9 m., 1 kW.

## BARCELONA (EAJ 1) (Unión Radio), Spain

FREQUENCY: 795 kc/s WAVELENGTH: 377.4 m. POWER: 5 kW.  
DISTANCE AND BEARING FROM LONDON: 707 miles; 170°.

CALL: 'Aquí estación EAJ1 [pronounced eh-ah-hota-oono], Unión Radio Barcelona, instalada en la cumbre del Tibidabo, Parque del Hotel Florida!' Repeated at irregular intervals. Between items the announcer gives only 'Radio Barcelona!'

Man announcer.

Closes down with the words 'Buenas noches, Señores; hasta mañana si Dios quiere!' followed by the Catalan Hymn 'Els Segadors'.

## BARI Italy

FREQUENCY: 1059 kc/s WAVELENGTH: 283.3 m. POWER (COPENHAGEN): 20 kW.

DISTANCE AND BEARING FROM LONDON: 1,080 miles; 125°.

CALL: 'Ente Italiano Audizioni Radiofoniche, Stazione di Bari!'

Man and woman announcers.

Closes down with the words 'Ente Italiano Audizioni Radiofoniche EIAR [pronounced eh-yar], Stazione di Bari! Fine della trasmissione!' followed by Royal Italian March, Fascist Hymn 'Giovinezza', and 'Signori e Signore, buona notte!'

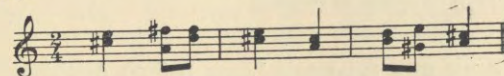
## BELGRADE (Radio Beograd) Yugoslavia

FREQUENCY: 686 kc/s WAVELENGTH: 437.3 m. POWER (COPENHAGEN): 2.5 kW.

DISTANCE AND BEARING FROM LONDON: 1,055 miles; 108°.

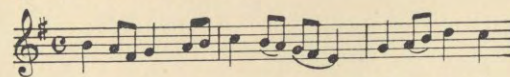
CALL: 'Ovde Radio Beograd!'

INTERVAL SIGNAL: First bar of a well-known folk-song (musical-box).



Man and woman announcers.

Closes down with the words 'Radio Beograd završava današnju emisiju, sutrašnja počinje u . . . čas', followed by the Yugoslav National Anthem.



*Bo-she prav-de i shto spas-se Od pro-pas-ti*

## BERGEN Norway

FREQUENCY: 850 kc/s WAVELENGTH: 352.9 m. POWER (COPENHAGEN): 1 kW.

DISTANCE AND BEARING FROM LONDON: 647 miles; 17°.

CALL: 'Dette er Bergen Kringkaster paa . . . m.'

INTERVAL SIGNAL: 'Bergen her!'

Man announcer.

Closes down with the words 'Vor utsending for iafte er hermed slut, Godnat!' followed by the Norwegian National Hymn.

## REICHSENDER BERLIN Germany

FREQUENCY: 841 kc/s WAVELENGTH: 356.7 m. POWER (COPENHAGEN): 100 kW.

DISTANCE AND BEARING FROM LONDON: 579 miles; 78°.

CALL: 'Hier ist der Reichssender Berlin!'

INTERVAL SIGNAL: Morse letter B (----).

Man announcer.

The announcement 'Hier ist die Reichssendeleitung' precedes all German broadcasts when an S.B. political programme is being transmitted.

Closes down with a different German folk-song each day.



## BOLZANO (1 BZ)

### Italy

FREQUENCY : 536 kc/s WAVELENGTH : 559.7 m. POWER (COPENHAGEN) : 1 kW.

DISTANCE AND BEARING FROM LONDON : 625 miles ; 120°.

OPENING SIGNAL : Bell (gramophone).

CALL : 'Ente Italiano Audizioni Radiofoniche EIAR [pronounced eh-yar], Stazione di Bolzano!'

Woman announcer.

Closes down with the words 'Ente Italiano Audizioni Radiofoniche EIAR, Stazione di Bolzano! Fine della trasmissione!' followed by Royal Italian March, Fascist Hymn 'Giovinezza', and 'Signori e Signore, buona notte!'

## BORDEAUX SUD-OUEST

### France

FREQUENCY : 1348 kc/s WAVELENGTH : 222.6 m. POWER (COPENHAGEN) : 1 kW.

DISTANCE AND BEARING FROM LONDON : 460 miles ; 183°.

CALL : 'Ici Radio Sud-Ouest Bordeaux!'

Man and woman announcers.

Closes down with call and usual French formula.

## BRATISLAVA

### Czechoslovakia

FREQUENCY : 1004 kc/s WAVELENGTH : 298.8 m. POWER : 13.5 kW.

DISTANCE AND BEARING FROM LONDON : 800 miles ; 100°.

CALL : 'Haló! Haló! Bratislava vysílá!'

INTERVAL SIGNAL : Slav song by Tomašik, 'Hej Slované'.

Woman announcer.

Closes down with the words, 'Československy rozhlas končí dnešné vysielanie a praje všetkým svojim poslucháčom doma i za hranicami dobrú noc!' followed by the Czech National Anthem 'Kde domov můj?'

## REICHSENDER Breslau

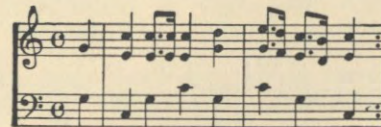
### Germany

FREQUENCY : 950 kc/s WAVELENGTH : 315.8 m. POWER (COPENHAGEN) : 100 kW.

DISTANCE AND BEARING FROM LONDON : 743 miles ; 85°.

CALL : 'Hier ist der Reichssender Breslau und seine Nebensender . . .!'

INTERVAL SIGNALS : First bars of the 'Hohenfriedberg' March, the composition of which is attributed to Frederick the Great.



For Gleiwitz : Opening bars from the old Silesian miners' song, 'Glück auf, Glück auf, der Steiger kommt'.

Man announcer.

The announcement 'Hier ist die Reichssendeleitung' precedes all German broadcasts when an S.B. political programme is being transmitted.

Closes down with customary good wishes and one verse of the 'Horst Wessel Lied' and one verse of the 'Deutschlandlied'.

RELAY STATION : Gleiwitz 1231 kc/s ; 243.7 m. ; 5 kW.

## BRNO

### Czechoslovakia

FREQUENCY : 922 kc/s WAVELENGTH : 325.4 m. POWER : 32 kW.

DISTANCE AND BEARING FROM LONDON : 752 miles ; 96°.

CALL : 'Haló! Haló! Brno [pronounced Brr-no] vysílá!'

INTERVAL SIGNAL : Four chords on the harp from Smetana's symphonic poem 'Vyšehrad'.

Man and woman announcers.

Closes down with the words 'Československy rozhlas končí dnešne avuj porad a přeje všem posluchačům dobrou noc!' followed by the Czech National Anthem 'Kde domov můj?'



## BRUSSELS (No. 1—French) Belgium

FREQUENCY : 620 kc/s WAVELENGTH : 483.9 m. POWER (COPENHAGEN) : 15 kW.

DISTANCE AND BEARING FROM LONDON : 200 miles ; 102°.

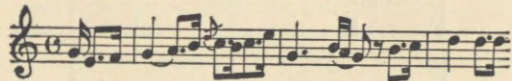
CALL : 'Ici Bruxelles I.N.R.!' or 'Émission de la Radio Catholique Belge !' or 'Émission de la Resef !' or 'Émission de la Solidral' etc., repeated between items.

INTERVAL SIGNAL : First bars of Belgian popular song, 'Où peut-on être mieux qu'au sein de sa famille?' by Grétry, are given on chimes.

Man announcer.

Announcements are made in French only.

After an orchestral programme, the station closes down with the Belgian National Anthem 'La Brabançonne'.



*Après des siècles d'es-cla-va-ge, le Bel-ge*

## BRUSSELS (No. 2—Flemish) Belgium

FREQUENCY : 932 kc/s WAVELENGTH : 321.9 m. POWER (COPENHAGEN) : 15 kW.

DISTANCE AND BEARING FROM LONDON : 200 miles ; 102°.

CALL : 'Hier Brussel NIR !' or 'Hier Brussel NIR, Uitzending van Vlanara !' or 'van Sarov !' etc.

INTERVAL SIGNAL : First few bars of Flemish popular song, 'Dan zal het beciaard speelen !' by Peter Benoit.

Man announcer.

Announcements are made in Flemish only.

Closes down with the words 'En thans wenschen wy U een goede nacht. Wel te rusten !' followed by the Belgian National Anthem 'La Brabançonne'.

## BUCHAREST Romania

FREQUENCY : 823 kc/s WAVELENGTH : 364.5 m. POWER (COPENHAGEN) : 12 kW.

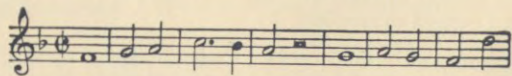
DISTANCE AND BEARING FROM LONDON : 1,300 miles ; 102°.

OPENING SIGNAL : Metronome beating for five minutes (160 beats to a minute).

CALL : 'Atentiune ! Aci Radio Bucuresti pe treisute șasezeci și patru virgula cinci metri !' Repeated in French, German, and Italian.

Woman announcer.

Closes down with the Romanian National Anthem.



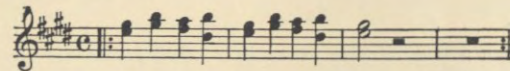
*Trai-as-că-re-ge-le In p-a-ce Si*

## BUDAPEST (No. 1) Hungary

FREQUENCY : 546 kc/s WAVELENGTH : 549.5 m. POWER (COPENHAGEN) : 120 kW.

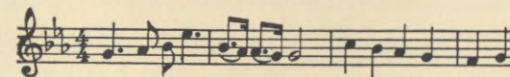
DISTANCE AND BEARING FROM LONDON : 900 miles ; 100°.

OPENING SIGNAL (also used during intervals in programme) : A phrase of nine notes in two-part harmony, four notes repeated, followed by initial note, thus : G sharp, B A B G sharp, B A B G sharp.



CALL : 'Hallo ! Itt Radio Budapest !' followed by 'Hallo ! Hier Radio Budapest !' and 'Allô ! Allô ! Ici Radio Budapest, Hongrie !'

Closes down with the call in Magyar, German, and French, followed by the Hungarian National Anthem.



*Is - ten, áldámeg a Mag - yart Jó Ked - vvel*

### RELAY STATIONS :

Budapest (No. 2) : 359.5 kc/s ; 834.5 m. ; 20 kW.

Nyiregyháza : 1,122 kc/s ; 267.4 m. ; 6.2 kW.

Magyaróvár : 1.321 kc/s ; 227.1 m. ; 1.25 kW.

Miskolc : 1.438 kc/s ; 208.6 m. ; 1.25 kW.

Pecs : 1.465 kc/s ; 204.8 m. ; 1.25 kW.

## CAIRO (No. 1) Egypt

FREQUENCY : 620 kc/s WAVELENGTH : 483.9 m. POWER (COPENHAGEN) : 20 kW.

DISTANCE FROM LONDON : 2,200 miles.

INTERVAL SIGNAL : Ticking of clock.

Man and woman announcers.

Announcements are made in Arabic, English, and French.

Closes down with the words 'Good night', followed by the Egyptian National Anthem 'Salem el Malek'.

### RELAY STATION :

Cairo (No. 2) : 1348 kc/s ; 222.6 m. ; 0.5 kW.



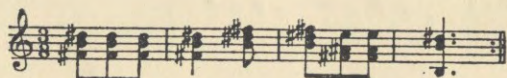
## REICHSENDER COLOGNE (Langenberg), Germany

FREQUENCY : 658 kc/s WAVELENGTH : 455.9 m. POWER (COPENHAGEN) : 100 kW.

DISTANCE AND BEARING FROM LONDON : 306 miles ; 95°.

CALL : 'Hier ist der Reichssender Köln !'

INTERVAL SIGNAL : Opening bars of an old Westphalian folk-song, the 'Postillion Song'.



Hop-sa, nie Lor - - che, dreh Dich mal num.

Man and woman announcers.

The announcement 'Hier ist die Reichssendeleitung' precedes all German broadcasts when an S.B. political programme is being transmitted.

Closes down with one verse of the 'Horst Wessel Lied' and one verse of the 'Deutschlandlied'.

## COPENHAGEN Denmark

FREQUENCY : 1176 kc/s WAVELENGTH : 255.1 m. POWER (COPENHAGEN) : 10 kW.

DISTANCE AND BEARING FROM LONDON : 594 miles ; 56°.

CALL : 'København-Kalundborg !' After 8 p.m. B.S.T., the call is 'København-Kalundborg og Danmark's Kortbølgesender !'

INTERVAL SIGNAL : Melody from an old folk-song.

Man and woman announcers.

Closes down with the words 'Hermed slutter Udsendelserne for i Aften. Godnat, Godnat !' followed by the melody 'Der er et yndigt Land' ('There is a lovely land').

### RELAY STATIONS :

Kalundborg : 238 kc/s ; 1261 m. ; 60 kW.

Skamlebæk : 6060 kc/s ; 49.5 m. ; 0.5 kW.

## CORK (6 CK) Irish Free State

FREQUENCY : 1240 kc/s WAVELENGTH : 241.9 m. POWER (COPENHAGEN) : 1 kW.

DISTANCE AND BEARING FROM LONDON : 358 miles ; 278°.

For Call, Interval Signal, and other particulars, see Athlone.

## CRACOW Poland

FREQUENCY : 1022 kc/s WAVELENGTH : 293.5 m. POWER : 2 kW.

DISTANCE AND BEARING FROM LONDON : 878 miles ; 89°.

OPENING SIGNAL : Chimes from St. Mary's Church.

CALL : 'Hallo ! Hallo ! Polskie Radjo Krakoo !'

INTERVAL SIGNAL : A few bars of a carol.

Man and woman announcers.

Closes down with the words 'Zytshymy vshystkim dobrey notsy !' followed by the Polish National Anthem 'Dombrowski Mazurka'.

## DANZIG Danzig Free City

FREQUENCY : 1303 kc/s WAVELENGTH : 230.2 m. POWER (COPENHAGEN) : 0.5 kW.

DISTANCE AND BEARING FROM LONDON : 795 miles ; 67°.

For Call, Interval Signal, and other particulars, see Königsberg.

## DEUTSCHLANDSENDER (Königs Wusterhausen), Germany

FREQUENCY : 191 kc/s WAVELENGTH : 1571 m. POWER (COPENHAGEN) : 60 kW.

DISTANCE AND BEARING FROM LONDON : 588 miles ; 79°.

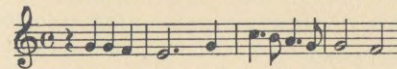
CALL : 'Hier ist der Deutschlandsender !'

INTERVAL SIGNAL : Bars from the German folk-song, 'Ueb' immer Treu und Redlichkeit'.

Man announcer.

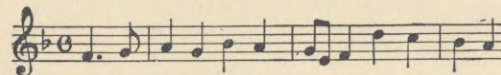
The announcement 'Hier ist die Reichssendeleitung' precedes all German broadcasts when an S.B. political programme is being transmitted.

Closes down with the words 'Hier ist der Deutschlandsender ! Wir beenden unser Programm mit einem Gruss an das Vaterland !' followed by one verse of the 'Horst Wessel Lied' :



Die Fahne hoch, die Reihen fest geschlossen

and one verse of the 'Deutschlandlied'.



Deutschland, Deutschland über alles über alles



## DUBLIN (2 RN) Irish Free State

FREQUENCY : 1348 kc/s WAVELENGTH : 222.6 m. POWER (COPENHAGEN) : 0.5 kW.

DISTANCE AND BEARING FROM LONDON : 288 miles ; 298°.

For Call, Interval Signal, and other particulars, *see* Athlone.

## ÉMETTEUR NATIONAL SUISSE ROMAND (Sottens), Switzerland

FREQUENCY : 677 kc/s WAVELENGTH : 443.1 m. POWER : 25 kW.

DISTANCE AND BEARING FROM LONDON : 465 miles ; 135°.

CALL (when transmitting from Lausanne or Geneva Studios) : ' Ici Émetteur National Suisse Romand ; Studio de Genève (or de Lausanne) ! Bonjour, Mesdames et Messieurs ! '

INTERVAL SIGNALS : R.S.R. in Morse for Sottens, and chimes (Genevese melody) for Geneva.

Man and woman announcers.

Closes down with the words ' Bonsoir, Mesdames ; bonsoir, Messieurs ! Bonne nuit ! ' followed by a patriotic song.

Relays the Geneva and Lausanne programmes.

Geneva : 401 kc/s ; 748 m. ; 1.3 kW.

Lausanne has a studio, but no transmitter.

## FLORENCE (1 FI) Italy

FREQUENCY : 610 kc/s WAVELENGTH : 491.8 m. POWER (COPENHAGEN) : 20 kW.

DISTANCE AND BEARING FROM LONDON : 750 miles ; 131°.

OPENING SIGNAL : Bell (gramophone).

CALL : ' Ente Italiano Audizioni Radiofoniche EIAR [pronounced eh-yar], Stazione di Firenze Milano-Torino-Genova-Trieste ! '

INTERVAL SIGNAL : Song of the nightingale (musical-box).

Man and woman announcers.

Closes down with the words ' Ente Italiano Audizioni Radiofoniche EIAR, Stazione di Firenze-Milano-Torino-Genova-Trieste ! Fine della trasmissione ! ' followed by Royal Italian March, Fascist Hymn ' Giovinezza ', and ' Signori e Signore, buona notte ! '

This station works in conjunction with Milan, Turin, Genoa, and Trieste.

## REICHSENDER FRANKFURT-am-MAIN Germany

FREQUENCY : 1195 kc/s WAVELENGTH : 251 m. POWER (COPENHAGEN) : 17 kW.

DISTANCE AND BEARING FROM LONDON : 396 miles ; 101°.

CALL : ' Hier ist der Reichssender Frankfurt und seine Nebensender . . . ! '

INTERVAL SIGNAL : A few bars from ' Zum Rhein, zum Rhein ! '



Man and woman announcers.

The announcement ' Hier ist die Reichssendeleitung ' precedes all German broadcasts when an S.B. political programme is being transmitted.

Closes down with the words ' Sie hörten . . . ! ' followed by one verse of the ' Horst Wessel Lied ' and one verse of the ' Deutschlandlied '.

### RELAY STATIONS :

Cassel : 1195 kc/s ; 251 m. ; 1.5 kW.

Coblenz : 1195 kc/s ; 251 m. ; 1.5 kW.

Freiburg-im-Breisgau : 1195 kc/s ; 251 m. ; 5 kW.

Kaiserslautern : 1195 kc/s ; 251 m. ; 1.5 kW.

Trier : 1195 kc/s ; 251 m. ; 2 kW.

## GENOA (1 GE) Italy

FREQUENCY : 986 kc/s WAVELENGTH : 304.3 m. POWER (COPENHAGEN) : 10 kW.

DISTANCE AND BEARING FROM LONDON : 645 miles ; 136°.

OPENING SIGNAL : Bell (gramophone).

CALL : ' Ente Italiano Audizioni Radiofoniche EIAR [pronounced eh-yar], Stazione di Genova-Milano-Torino-Trieste-Firenze ! '

INTERVAL SIGNAL : Song of the nightingale (musical-box).

Woman announcer.

Closes down with the words ' Ente Italiano Audizioni Radiofoniche EIAR, Stazione di Genova-Milano-Torino-Trieste-Firenze ! Fine della trasmissione ! ' followed by Royal Italian March, Fascist Hymn ' Giovinezza ', and ' Signori e Signore, buona notte ! '

This station works in conjunction with Milan, Turin, Trieste, and Florence.



## GÖTEBORG Sweden

FREQUENCY: 941 kc/s WAVELENGTH: 318.8 m. POWER (COPENHAGEN): 10 kW.

DISTANCE AND BEARING FROM LONDON: 641 miles; 44°.

CALL: 'Göteborg Rundradio!' [phonetic: Yer-ta-borr Roondrah-dee-o!] when own transmissions, but, when relaying a programme from Stockholm, the name of that city is substituted for Göteborg, and the usual opening signal transmitted. No interval signal, but call repeated.

Man announcer.

Closes down with the words 'God natt, God natt, allesamman!' Usually relays Stockholm.

## GRAZ Austria

FREQUENCY: 886 kc/s WAVELENGTH: 338.6 m. POWER (COPENHAGEN): 7 kW.

DISTANCE AND BEARING FROM LONDON: 764 miles; 108°.

CALL: 'Hallo! Hallo! Radio Graz!'

INTERVAL SIGNAL: Ticking of metronome (200 to the minute). Independent programmes; also relays Vienna.

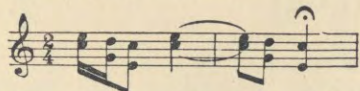
## REICHSENDER HAMBURG Germany

FREQUENCY: 904 kc/s WAVELENGTH: 331.9 m. POWER (COPENHAGEN): 100 kW.

DISTANCE AND BEARING FROM LONDON: 449 miles; 68°.

CALL: 'Hier ist der Reichssender Hamburg und seine Nebensender!'

INTERVAL SIGNALS: From Hamburg, a few bars of 'Steuermann lass die Wacht' (*Flying Dutchman*).



From Hanover, opening bars of the 'Niedersächsischer Sängergross'. From Bremen, opening bars of the Frisian song, 'Wo de Nordseewellen trecken an den Strand'. From Kiel and Flensburg, a few bars from 'Schleswig-Holstein stamverwandt'.

The announcement 'Hier ist die Reichssendeleitung' precedes all German broadcasts when an S.B. political programme is being transmitted.

Closes down with one verse of the 'Horst Wessel Lied' and one verse of the 'Deutschlandlied'.

### RELAY STATIONS

Bremen	}	1330 kc/s; 225.6 m.; 1.5 kW.
Flensburg		
Hanover		
Magdeburg		
Stettin		

## HANOVER Germany

FREQUENCY: 1330 kc/s WAVELENGTH: 225.6 m. POWER (COPENHAGEN): 1.5 kW.

DISTANCE AND BEARING FROM LONDON: 425 miles; 78°.

For Call, Interval Signal, and other particulars, see Hamburg.

The announcement 'Hier ist die Reichssendeleitung' precedes all German broadcasts when an S.B. political programme is being transmitted.

## HELSINKI (Helsingfors) Finland

FREQUENCY: 895 kc/s WAVELENGTH: 335.2 m. POWER (COPENHAGEN): 10 kW.

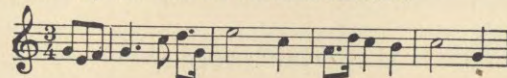
DISTANCE AND BEARING FROM LONDON: 1,131 miles; 48°.

INTERVAL SIGNAL: Melody played slowly on musical-box.

Man and woman announcers.

All calls and announcements are made in Finnish and Swedish—both being national languages in Finland.

Closes down with the words 'Toivotan kaikille kuuntelijoillemme hyvää yötä!' and 'Jag önskar alla våra åhörare en God Natt!' followed by the Finnish National Anthem.



### RELAY STATIONS:

Lahti: 166 kc/s; 1807 m.; 40 kW.

Pietarsaari (Jakobstad): 1500 kc/s; 200 m.; 0.25 kW.

Pori (Björneborg): 749 kc/s; 400.5 m.; 1 kW.

Sortavala: 749 kc/s; 400.5 m.; 0.2 kW.

Tampere (Tammerfors): 1420 kc/s; 211.3 m.; 0.7 kW.

Turku (Åbo): 1429 kc/s; 209.9 m.; 0.5 kW.

Viipuri (Viborg): 527 kc/s; 569.3 m.; 10 kW.

## \*HILVERSUM Holland

FREQUENCY: 995 kc/s WAVELENGTH: 301.5 m. POWER: 20 kW.

DISTANCE AND BEARING FROM LONDON: 232 miles; 75°.

CALL: 'Hier Hilversum, Holland!' Sometimes also 'Hier AVRO!' or 'Hier Algemeene Vereeniging Radio Omroep!' or 'Hier VARA!' or 'Hier Vereeniging van Arbeiders Radio Amateurs!' or other broadcasting companies. Very seldom calls in other languages.

Man announcer.

Closes down with the words 'Goeden nacht, Dames en Heeren! Wel te rusten!' followed, when AVRO is broadcasting, by the Dutch National Anthem 'Wilhelmus van Nassau', or in the case of VARA, by different compositions.

\* See note under Huizen on next page.



## \*HUIZEN

### Holland

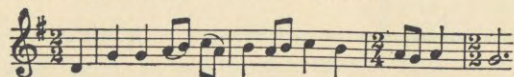
FREQUENCY: 160 kc/s WAVELENGTH: 1875 m. POWER (COPENHAGEN): 7 kW up to 3.40 p.m. B.S.T.

DISTANCE AND BEARING FROM LONDON: 236 miles; 75°.

CALL: 'Hier Huizen Holland!' with which is always coupled the name of the association providing the broadcast—e.g. 'Katholieke Radio Omroep (KRO)'; 'Nederlandsche Christelijke Radio Vereeniging (NCRV)'; 'Vrijzinnig Protestantsche Radio Omroep (VPRO)'.

Men announcers.

Closes down with the words 'Goeden Nacht. Wel te rusten!' followed by the Dutch National Anthem.



The Kootwijk transmitter (50 kW) takes the place of the Huizen transmitter each day after 3.40 p.m. B.S.T.

\*N.B.—The broadcasting societies associated with the Hilversum and Huizen stations respectively exchange transmitters (and consequently wavelengths) every three months, i.e. in January, April, July, and October.

## ISTANBUL (Constantinople) Turkey

FREQUENCY: 187.5 kc/s WAVELENGTH: 1600 m. POWER: 5 kW.

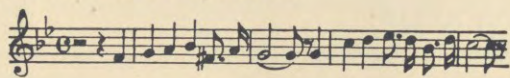
DISTANCE AND BEARING FROM LONDON: 1,553 miles; 106°.

CALL: (in Turkish) 'Allô! Allô! Istanbul Telsiz Téléfonou!' (in French) 'Ici Radio Stamboul!'

INTERVAL SIGNAL: Gong struck 60 times per minute.

Man announcer.

Closes down with the Turkish National Anthem and final 'Good night' in Turkish and French.



## JUAN-LES-PINS (Radio Côte d'Azur) France

FREQUENCY: 1249 kc/s WAVELENGTH: 240.2 m. POWER (COPENHAGEN): 2 kW.

DISTANCE AND BEARING FROM LONDON: 650 miles; 145°.

CALL: 'Radio Nice-Cannes-Juan-les-Pins!'

Man and woman announcers.

Closes down with the words 'Bonsoir, Mesdames; bonsoir, Mesdemoiselles; bonsoir, Messieurs!' followed by 'La Marseillaise'.

## KALUNDBORG

### Denmark

FREQUENCY: 238 kc/s WAVELENGTH: 1261 m. POWER (COPENHAGEN): 60 kW.

DISTANCE AND BEARING FROM LONDON: 542 miles; 53°.

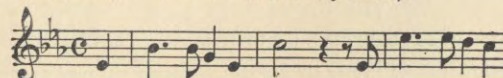
OPENING SIGNAL: One stroke on a gong.

CALL: 'København-Kalundborg!' After 8 p.m. B.S.T. the call is 'København-Kalundborg og Danmark's Kortbølgesender!'

INTERVAL SIGNAL: Melody from an old folk-song.

Man and woman announcers.

Closes down with the words 'Hermed slutter Udsendelserne for i Aften. Godnat, Godnat!' followed by the melody 'Der er et yndigt Land' ('There is a lovely land').



Relays Copenhagen.

## KATOWICE

### Poland

FREQUENCY: 758 kc/s WAVELENGTH: 395.8 m. POWER: 12 kW.

DISTANCE AND BEARING FROM LONDON: 835 miles; 88°.

CALL: 'Hallo! Too! Polskie Radjo Katowice!'

INTERVAL SIGNAL: Hammer strokes on an anvil to mark the industrial character of the district.

Man and woman announcers.

When closing down, wishes listeners good night in both Polish ('Zytshymy vshystkim dobrej notsy!') and French, followed by a few bars of the Polish National Anthem 'Dombrowski Mazurka'. Apart from own transmissions, relays other Polish stations.

## KAUNAS (Kovno) Lithuania

FREQUENCY: 155 kc/s WAVELENGTH: 1935 m. POWER (COPENHAGEN): 7 kW.

DISTANCE AND BEARING FROM LONDON: 1,016 miles; 67°.

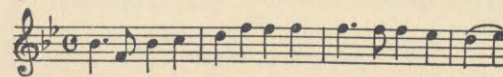
CALL: 'Allô! Allô! Radio Kaunas! Lietuva, Lithuanie!'

INTERVAL SIGNAL: Melody of the song 'Lietuviais esame mes gime'.

Announcements are made in Lithuanian only.

Man and woman announcers.

Closes down with the words 'Labanakt Radio Kaunas-Lietuva-Lithuanie!' followed by the Lithuanian National Anthem.





## REICHSENDER KÖNIGSBERG (Heilsberg), Germany

FREQUENCY : 1031 kc/s WAVELENGTH : 291 m. POWER (COPENHAGEN) : 60 kW.\*

DISTANCE AND BEARING FROM LONDON : 882 miles ; 68°.

CALL : 'Hier ist der Reichssender Königsberg und seine Nebensender!'

INTERVAL SIGNAL : A few bars from the Masurian folk-song 'Wild flutet der See'.



Wild flu - tet der See.

Man and woman announcers.

The announcement 'Hier ist die Reichssendeleitung' precedes all German broadcasts when an S.B. political programme is being transmitted.

Closes down with one verse of the 'Horst Wessel Lied' and one verse of the 'Deutschlandlied'.

### RELAY STATIONS :

Königsberg (No. 2) : 1348 kc/s ; 222.6 m. ; 1.5 kW.

Landessender Danzig : 1303 kc/s ; 230.2 m. ; 0.5 kW.

\* Temporarily using 17 kW.

## KOŠICE Czechoslovakia

FREQUENCY : 1158 kc/s WAVELENGTH : 259.1 m. POWER (COPENHAGEN) : 2.6 kW.

DISTANCE AND BEARING FROM LONDON : 962 miles ; 93°.

CALL : 'Haló! Haló! Kosice vysílá!'

INTERVAL SIGNAL : Christmas carol 'Pásli ovce valaši'.

Men announcers.

Closes down with the words 'Halo! Košice končia dnešné vysielanie a všetkým svojim poslucháčom prajú dobrú noc!' followed by the Czech National Anthem 'Kde domov můj?'

## LAHTI Finland

FREQUENCY : 166 kc/s WAVELENGTH : 1807 m. POWER : 40 kW.

DISTANCE AND BEARING FROM LONDON : 1,175 miles ; 46°.

Relays Helsinki.

For Call, Interval Signal, and other particulars, see Helsinki.

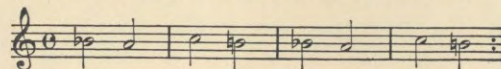
## REICHSENDER LEIPZIG Germany

FREQUENCY : 785 kc/s WAVELENGTH : 382.2 m. POWER (COPENHAGEN) : 120 kW.

DISTANCE AND BEARING FROM LONDON : 537 miles ; 86°.

CALL : 'Hier ist der Reichssender Leipzig und seine Nebensender!'

INTERVAL SIGNAL : Four notes, B flat, A, C, B natural.



Man announcer.

The announcement 'Hier ist die Reichssendeleitung' precedes all German broadcasts when an S.B. political programme is being transmitted.

Closes down with one verse of the 'Horst Wessel Lied' and one verse of the 'Deutschlandlied'.

### RELAY STATION :

Dresden : 1285 kc/s ; 233.5 m. ; 1.5 kW.

## LENINGRAD (RV 53) U.S.S.R.

FREQUENCY : 245 kc/s WAVELENGTH : 1224 m. POWER : 100 kW.

DISTANCE AND BEARING FROM LONDON : 1,306 miles ; 52°.

CALL (when in English) : 'Listen! Listen! The Leningrad Radio Station RV53, wavelength 1224 m., speaking!'

INTERVAL SIGNAL : Air of the 'Internationale'.

Closes down with an invitation to write to the station, followed by 'Nye pozabudtye zazemlit antenoo. Pokoinoi notchi!'

## LILLE (Radio PTT Nord) France

FREQUENCY : 1213 kc/s WAVELENGTH : 247.3 m. POWER (COPENHAGEN) : 5 kW.

DISTANCE AND BEARING FROM LONDON : 150 miles ; 112°.

CALL : 'Allô! Allô! Ici Radio PTT Nord à Lille!'

Man announcer.

Closes down (about 10.30 p.m.) with the usual French formula, followed by a Lille air, 'Le P'tit Quinquin', played on a musical-box.

Independent programmes ; also relays Paris (PTT) and other PTT stations.



## LISBON (Emissora Nacional)

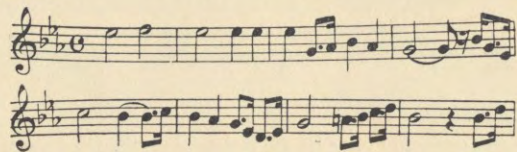
### Portugal

FREQUENCY : 629 kc/s WAVELENGTH : 476.9 m. POWER (COPENHAGEN) : 20 kW.

CALL : 'Emissora Nacional, Lisboa, Portugal!'

Man and woman announcers.

Closes down with the words : 'Terminou a emissão de hoje; miuto boa noite!' followed by the Portuguese National Anthem.



## LJUBLJANA

### Yugoslavia

FREQUENCY : 527 kc/s WAVELENGTH : 569.3 m. POWER (COPENHAGEN) : 5 kW.

DISTANCE AND BEARING FROM LONDON : 760 miles ; 114°.

CALL : 'Hallo! Radio Ljubljana!'

INTERVAL SIGNAL : Cuckoo call.

Man and woman announcers.

Closes down with the words 'Laku noč!' at the end of the evening transmission, followed by the Yugoslav National Anthem.

## ŁÓDŹ

### Poland

FREQUENCY : 1339 kc/s WAVELENGTH : 224 m. POWER : 1.7 kW.

DISTANCE AND BEARING FROM LONDON : 850 miles ; 81°.

Relays Warsaw.

For Call, Interval Signal, and other particulars, *see* Warsaw.

## LWÓW

### Poland

FREQUENCY : 795 kc/s WAVELENGTH : 377.4 m. POWER (COPENHAGEN) : 16 kW.

DISTANCE AND BEARING FROM LONDON : 1,055 miles ; 87°.

OPENING SIGNAL : Refrain from a fanfare played on a guitar.

CALL : 'Hallo! Hallo! Polskie Radjo Lwów!'

INTERVAL SIGNAL : Fanfare on guitar.

Man and woman announcers.

Closes down with the words 'Zytshymy vshystkim dobrej notsy!' followed by the Polish National Anthem 'Dombrowski Mazurka'.

## LYONS-LA-DOUA (PTT)

### France

FREQUENCY : 648 kc/s WAVELENGTH : 463 m. POWER (COPENHAGEN) : 15 kW.

DISTANCE AND BEARING FROM LONDON : 458 miles ; 148°.

CALL : 'Allô! Allô! Ici la Station de Radiodiffusion de Lyons-la-Doua!'

Man announcer.

Closes down with a few bars of 'La Marseillaise', followed by the usual French formula.

Independent programmes ; also relays Paris (PTT) and other PTT stations.

## LYONS (Radio Lyon)

### France

FREQUENCY : 1393 kc/s WAVELENGTH : 215.4 m. POWER (COPENHAGEN) : 5 kW.

DISTANCE AND BEARING FROM LONDON : 458 miles ; 148°.

OPENING SIGNAL : The announcer counts from 300 to 320.

CALL : 'Radio Lyon! Radio Lyon! Ici Radio Lyon!'

## MADONA

### Latvia

FREQUENCY : 1104 kc/s WAVELENGTH : 271.7 m. POWER (COPENHAGEN) : 50 kW.

DISTANCE AND BEARING FROM LONDON : 990 miles ; 210°.

CALL : 'Hallo Latvija! Madona!'

Man and woman announcers.

Closes down with the words 'Good night, ladies and gentlemen!' followed by the Latvian National Anthem.

## MADRID (EAJ7)

### (Unión Radio), Spain

FREQUENCY : 1095 kc/s WAVELENGTH : 274 m. POWER : 7 kW.

DISTANCE AND BEARING FROM LONDON : 786 miles ; 194°.

OPENING SIGNAL : Siegfried's bugle-call theme from the opera of that title. (Usually given on the piano.)

CALL : 'EAJ7 [pronounced eh-ah-hota-siétch] Unión Radio Madrid!' Repeated between items. At 1 p.m., 3 p.m., 8 p.m., and 11 p.m., B.S.T., chimes relayed from Home Office building, followed by electric correction, consisting of several long buzzes and one dot at 2 minutes past the hour.

Man and woman announcers.

Closes down with the 'Song of Riego'.



Sol - da dos ia Pa - tria . . . Nos ilama a la lid  
and 'Buenas noches, Señores ; hasta mañana!'



## MAGYARÓVÁR

### Hungary

FREQUENCY : 1321 kc/s WAVELENGTH : 227.1 m. POWER (COPENHAGEN) : 1.25 kW.

DISTANCE AND BEARING FROM LONDON : 810 miles ; 102°.

For Call, Interval Signal, and other particulars, see Budapest (No. 1).

## MARSEILLES-PROVENCE (PTT)

### France

FREQUENCY : 749 kc/s WAVELENGTH : 400.5 m. POWER (COPENHAGEN) : 5 kW.

DISTANCE AND BEARING FROM LONDON : 624 miles ; 154°.

OPENING SIGNAL : A few bars of an old Provençal folk-song from Bizet's *L'Arlésienne* are played.

CALL : 'Allô ! Allô ! Ici la Station de Radiodiffusion de Marseille-Provence !'

Man announcer.

Closes down with the Provençal folk-song from *L'Arlésienne*, followed by the usual French formula.

Independent programmes ; also relays Paris (PTT) and other PTT stations.

## MILAN (1 MI)

### Italy

FREQUENCY : 814 kc/s WAVELENGTH : 368.6 m. POWER (COPENHAGEN) : 50 kW.

DISTANCE AND BEARING FROM LONDON : 598 miles ; 131°.

OPENING SIGNAL : Bell (gramophone).

CALL : 'Ente Italiano Audizioni Radiofoniche EIAR [pronounced eh-yar], Stazione di Milano-Torino-Genova-Trieste-Firenze!'

INTERVAL SIGNAL : Song of the nightingale (musical-box).

Man and woman announcers.

Closes down with the words 'Ente Italiano Audizioni Radiofoniche EIAR, Stazione di Milano-Torino-Genova-Trieste-Firenze ! Fine della trasmissione !' followed by Royal Italian March, Fascist Hymn 'Giovinezza', and 'Signori e Signore, buona notte !'

This station works in conjunction with Turin, Genoa, Trieste, and Florence.

## MONTE CENERI

### Switzerland

FREQUENCY : 1167 kc/s WAVELENGTH : 257.1 m. POWER (COPENHAGEN) : 15 kW.

DISTANCE AND BEARING FROM LONDON : 555 miles ; 131°.

CALL : 'Radio Svizzera Italiana-Impianto nazionale, Monte Ceneri !'

INTERVAL SIGNAL : Peal of bells from the Pazzalino Church in Pregassona, near Lugano (five bells).

Closes down with the words 'Radio Svizzera Italiana ! Fine della trasmissione ! Buona notte a tutti !' followed by the hymn 'Addio la Caserma !' by R. Naef.

## MORAVSKÁ-OSTRAVA

### Czechoslovakia

FREQUENCY : 1113 kc/s WAVELENGTH : 269.5 m. POWER : 11.2 kW.

DISTANCE AND BEARING FROM LONDON : 813 miles ; 91°.

CALL : 'Haló, Moravská-Ostrava !'

INTERVAL SIGNAL : Folk-dance by Kovadlinka.

Man announcer.

Closes down with the words 'Moravská-Ostrava končí dnešní pořad a přeje všem posluchačům dobrou noc !' followed by the Czech National Anthem 'Kde domov můj ?'

## MOSCOW (No. 1)

### U.S.S.R.

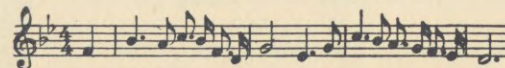
FREQUENCY : 174 kc/s WAVELENGTH : 1724 m. POWER : 500 kW.

DISTANCE AND BEARING FROM LONDON : 1,552 miles ; 64°.

CALL : 'Slooshaite ! Govoreet Moskva Radio-stantziya imeni Kominternu ! Odnovremenno rabotayoot radio-stantzii v gorodakh . . . !'

Man announcer.

Closes down (12 midnight B.S.T.) with the words 'Pokoinoi notchi !' followed by the 'Internationale'.





## MOTALA

### Sweden

FREQUENCY : 216 kc/s WAVELENGTH : 1389 m. POWER (COPENHAGEN) : 30 kW.

DISTANCE AND BEARING FROM LONDON : 768 miles ; 45°.

CALL : ' . . . Motala ! ' (Beginning with the name of the originating station.)

Closes down with the words ' God natt allesamman ! '

When orchestra present in studio, the Swedish National Anthem ' Du Gamla, du Fria ! ' is played.

Relays Stockholm and other stations.

## REICHSSENDER MUNICH

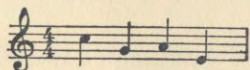
### Germany

FREQUENCY : 740 kc/s WAVELENGTH : 405.4 m. POWER (COPENHAGEN) : 100 kW.

DISTANCE AND BEARING FROM LONDON : 570 miles ; 110°.

CALL : ' Hiër ist der Reichssender München und seine Nebensender ! '

INTERVAL SIGNAL : Bell item from *Parsifal*.



For Nürnberg, a few bars from *Die Meistersinger*.

The announcement ' Hier ist die Reichssendeleitung ' precedes all German broadcasts when an S.B. political programme is being transmitted.

Closes down with one verse of the ' Horst Wessel Lied ' and one verse of the ' Deutschlandlied '.

#### RELAY STATION :

Nürnberg : 1267 kc/s ; 236.8 m. ; 2 kW.

## NAPLES (1 NA)

### Italy

FREQUENCY : 1104 kc/s WAVELENGTH : 271.7 m. POWER (COPENHAGEN) : 1.5 kW.

DISTANCE AND BEARING FROM LONDON : 1,003 miles ; 132°.

OPENING SIGNAL : Bell (gramophone).

CALL : ' Ente Italiano Audizioni Radiofoniche EIAR [pronounced eh-yar], Stazione di Napoli ! '

INTERVAL SIGNAL : Popular air played in three different keys.

INTERVAL CALL : Before each item, ' Radio Napoli ! '

Woman announcer.

Closes down with the words ' Ente Italiano Audizioni Radiofoniche EIAR, Stazione di Napoli ! Fine della trasmissione ! ' followed by Royal Italian March, Fascist Hymn ' Giovinezza ', and ' Signori e Signore, buona notte ! '

This stations works in conjunction with Rome and Milan (Vigentino).

## OSLO

### Norway

FREQUENCY : 260 kc/s WAVELENGTH : 1154 m. POWER (COPENHAGEN) : 60 kW.

DISTANCE AND BEARING FROM LONDON : 716 miles ; 32°.

OPENING SIGNAL : Themes from the Norwegian National Anthem.

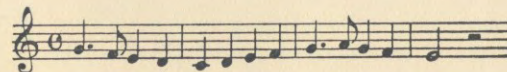
CALL : ' Hallo ! Hallo ! Oslo her ! '

INTERVAL SIGNAL : *Motif* from Grieg's ' Sigurd Jorsalfar '.

TIME SIGNAL : 7 p.m. B.S.T. At 30 seconds before 7 p.m. B.S.T., a series of 25 short flute-like notes from an oscillating valve ; then 5 seconds' pause and a final note at 7 p.m. B.S.T. sharp.

Man announcer.

Closes down with the following words ' God natt, God natt ! ' followed by the Norwegian National Anthem.



#### RELAY STATIONS :

Bodø : 850 kc/s ; 352.9 m. ; 0.5 kW.

Christiansand : 1276 kc/s ; 235.1 m. ; 0.5 kW.

Finnmark (Vadsø) : 355 kc/s ; 845 m. ; 10 kW.

Fredrikstad : 776 kc/s ; 386.6 m. ; 0.7 kW.

Hamar : 519 kc/s ; 578 m. ; 0.7 kW.

Notodden : 1357 kc/s ; 221.1 m. ; 0.15 kW.

Porsgrund : 850 kc/s ; 352.9 m. ; 0.7 kW.

Rjukan : 1348 kc/s ; 222.6 m. ; 0.15 kW.

Stavanger : 1276 kc/s ; 235.1 m. ; 0.5 kW.

Trøndelag (Trondheim) : 629 kc/s ; 476.9 m. ; 20 kW.



## PALERMO (1 PA)

### Italy

FREQUENCY : 565 kc/s WAVELENGTH : 531 m. POWER (COPENHAGEN) : 4 kW.

DISTANCE AND BEARING FROM LONDON : 1,130 miles ; 139°.

OPENING SIGNAL : Bell (gramophone).

CALL : 'Ente Italiano Audizioni Radiofoniche EIAR [pronounced eh-yar], Stazione di Palermo !'

INTERVAL CALL : 'Radio Palermo !'

Man announcer.

Closes down with the words 'Ente Italiano Audizioni Radiofoniche EIAR, Stazione di Palermo ! Fine della trasmissione!' followed by Royal Italian March, Fascist Hymn 'Giovinezza', and 'Signori e Signore, buona notte !'

## PARIS (Poste National Radio Paris)

### France

FREQUENCY : 182 kc/s WAVELENGTH : 1648 m. POWER (COPENHAGEN) : 80 kW.

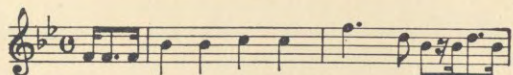
DISTANCE AND BEARING FROM LONDON : 214 miles ; 148°.

CALL : 'Allô ! Allô ! Ici Poste National Radio Paris, Poste d'Emission de St. Rémy l'Honoré !'

INTERVAL CALL : 'Ici Poste National Radio Paris !'

Man announcer.

Closes down with call and 'Bonsoir, Mesdames ; bonsoir, Mesdemoiselles ; bonsoir, Messieurs !' followed by preliminary bars of 'La Marseillaise' at close of transmission.



## PARIS (Poste Parisien)

### France

FREQUENCY : 959 kc/s WAVELENGTH : 312.8 m. POWER (COPENHAGEN) : 60 kW.

DISTANCE AND BEARING FROM LONDON : 214 miles ; 148°.

OPENING AND INTERVAL SIGNALS : Strokes on a gong.

Man and woman announcers.

Closes down with the usual French formula, followed by a few bars of 'La Marseillaise' and time of next transmission.

## PARIS (PTT)

### (École Supérieure des Postes et Télégraphes), France

FREQUENCY : 695 kc/s WAVELENGTH : 431.7 m. POWER (COPENHAGEN) : 7 kW.

DISTANCE AND BEARING FROM LONDON : 214 miles ; 148°.

CALL : 'Allô ! Allô ! Ici le Poste Radiodiffusion de l'École Supérieure des Postes et Télégraphes de Paris !'

Regularly relays outside broadcasts, but the call is not frequently repeated.

Man announcer.

Closes down with a few bars of 'La Marseillaise', followed by the usual French formula.

#### REGIONAL STATIONS :

Algiers (Radio PTT) : 941 kc/s ; 318.8 m. ; 12 kW.

Alpes-Grenoble (PTT) : 583 kc/s ; 514.6 m. ; 15 kW.

Bordeaux-Lafayette (PTT) : 1077 kc/s ; 278.6 m. ; 30 kW.

Lille (Radio PTT Nord) : 1213 kc/s ; 247.3 m. ; 5 kW.

Limoges (Radio PTT) : 913 kc/s ; 328.6 m. ; 0.5 kW.

Lyons-la-Doua (PTT) : 648 kc/s ; 463 m. ; 15 kW.

Marseilles-Provence (PTT) : 749 kc/s ; 400.5 m. ; 5 kW.

Montpellier (PTT) : 1339 kc/s ; 224 m. ; 5 kW.

Rennes-Bretagne (PTT) : 1040 kc/s ; 288.5 m. ; 40 kW.

Strasbourg (Radio PTT) : 859 kc/s ; 349.2 m. ; 35 kW.

Toulouse-Pyrénées (PTT) : 776 kc/s ; 386.6 m. ; 2 kW.

Also :

Paris (Eiffel Tower) : 1456 kc/s ; 206 m. ; 5 kW.

Paris (Poste National Radio Paris) : 182 kc/s ; 1648 m. ; 80 kW.

Paris (Radio Colonial) : 11,720, 11,880, 15,243 kc/s ; 25.6, 25.23, 19.68 m. ; 10 kW.

## PARIS (Radio LL)

### France

FREQUENCY : 1424 kc/s WAVELENGTH : 210.7 m. POWER : 0.8 kW.

DISTANCE AND BEARING FROM LONDON : 214 miles ; 148°.

OPENING AND INTERVAL CALLS : 'Ici Radio LL !'

Man announcer.

All announcements are made in French.

Closes down with the usual French formula.



## POZNAN (Posen) Poland

FREQUENCY : 868 kc/s WAVELENGTH : 345.6 m. POWER : 16 kW.  
DISTANCE AND BEARING FROM LONDON : 728 miles ; 79°.

OPENING SIGNAL : Relay of a clock gong, or chimes from Poznań  
Town Hall, or occasionally from St. Mary's Church, Cracow.

CALL : 'Hallo! Hallo! Polskie Radjo Poznań!'

INTERVAL SIGNAL : Metronome.

Man and woman announcers.

Apart from transmitting its own programmes, also relays Warsaw  
and other Polish stations.

News bulletins are given in both the Polish and French languages.  
Closes down with the words 'Zytshymy vshystkim dobrej  
notsy!' followed by a few bars of the Polish National  
Anthem 'Dombrowski Mazurka'.

## PRAGUE (No. 1) Czechoslovakia

FREQUENCY : 638 kc/s WAVELENGTH : 470.2 m. POWER (COPEN-  
HAGEN) : 120 kW.

DISTANCE AND BEARING FROM LONDON : 640 miles ; 93°.

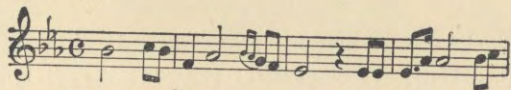
OPENING SIGNAL (6.35 a.m. B.S.T. only) : Crowing of cock.

CALL : 'Haló! Haló! Radio-Praha vysílá...!' in Czech, German,  
French, and English. (Czech is unlike either the Latin or  
Teutonic languages, but more akin to Russian and Polish.)

INTERVAL SIGNAL : Four chords on the harp from Smetana's  
symphonic poem 'Vyšehrad'.

Man and woman announcers.

Closes down with the words 'Ceskoslovenský rozhlas končí dnešní  
vysílání a přeje všem posluchačům domácím i zahraničním,  
dobrou noc!' followed by the Czech National Anthem, 'Kde  
domov můj?'



*Kde do-mov Můj? Kde vlast' je ma? Vo-da hu-oi po*

RELAY STATION :

Prague (No. 2) : 1204 kc/s ; 249.2 m. ; 5 kW.

## RABAT (No. 1) Morocco

FREQUENCY : 601 kc/s WAVELENGTH : 499.2 m. POWER (COPEN-  
HAGEN) : 25 kW.

DISTANCE AND BEARING FROM LONDON : 1,252 miles ; 198°.

CALL : 'Ici Radio Maroc! Station de l'Office Chérifien des  
Postes et Télégraphes!'

INTERVAL SIGNAL : Metronome (60 beats to the minute).

Man announcer.

Closes down with 'La Marseillaise'.

RELAY STATION :

Rabat (CNR) : 8035 and 12,830 kc/s ; 37.33 and 23.39 m. ;  
10 kW.

## RADIO NORMANDIE (Fécamp)

### France

FREQUENCY : 1113 kc/s WAVELENGTH : 269.5 m. POWER (COPEN-  
HAGEN) : 10 kW.

DISTANCE AND BEARING FROM LONDON : 125 miles ; 176°.

OPENING SIGNAL : Air 'Nos vieux pommiers' (Dior).

CALL : 'Ici Radio Normandie!'

Man and woman announcers.

Nightly transmissions from 11 p.m. to 2 a.m. in English and French.

Closes down with the air 'Ma Normandie' (Bérat).

## RENNES-BRETAGNE (PTT)

### France

FREQUENCY : 1040 kc/s WAVELENGTH : 288.5 m. POWER (COPEN-  
HAGEN) : 40 kW.

DISTANCE AND BEARING FROM LONDON : 248 miles ; 197°.

CALL : 'Allô! Allô! Ici le Poste Radiodiffusion de Rennes-  
Bretagne!'

Man announcer.

Closes down with the usual French formula, followed by a few  
bars of a Breton tune 'Air de Biniou'.

Independent programmes ; also relays Paris (PTT) and other  
PTT stations.

## REYKJAVIK

### Iceland

FREQUENCY : 208 kc/s\* WAVELENGTH : 1442 m. POWER : 16 kW.

DISTANCE AND BEARING FROM LONDON : 1,175 miles ; 326°.

CALL : 'Utvarp Reykjavik!'

Woman announcer.

Closes down with the words 'Goda nótt!' followed by the Iceland  
National Anthem 'O Gud Vors Lands'.

\* Used temporarily ; official frequency : 183 kc/s.

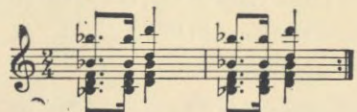


## RIGA

### Latvia

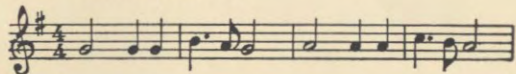
FREQUENCY : 583 kc/s WAVELENGTH : 514.6 m. POWER (COPENHAGEN) : 15 kW.

DISTANCE AND BEARING FROM LONDON : 1,042 miles ; 59°.  
CALL : 'Hallo Latvija! Riga, Madona, Kuldiga, and Liepāja!'  
INTERVAL SIGNAL : Chimes, Latvian folk-tune.



Man and woman announcers.

Closes down with the words 'Ar Labu Nakti!' followed by the Latvian National Anthem.



*Dievs, svēti Lat-vi-ju mus' dargo té-vi-ju*

RELAY STATIONS :

Kuldiga : 1258 kc/s ; 238.5 m. ; 10 kW.  
Liepāja : 1737 kc/s ; 173 m. ; 0.1 kW.  
Madona : 1104 kc/s ; 271.7 m. ; 50 kW.

## ROME (1 RO)

### Italy

FREQUENCY : 713 kc/s WAVELENGTH : 420.8 m. POWER (COPENHAGEN) : 50 kW.

DISTANCE AND BEARING FROM LONDON : 890 miles ; 133°.

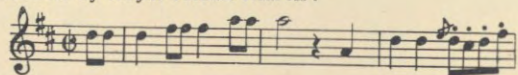
OPENING SIGNAL : Bell (gramophone).

CALL : 'Ente Italiano Audizioni Radiofoniche EIAR [pronounced eh-yar], Stazione di Roma!'

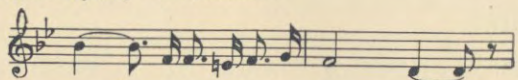
INTERVAL SIGNAL : Popular air played in three different keys.

Woman announcer.

Closes down with the words 'Ente Italiano Audizioni Radiofoniche EIAR, Stazione di Roma! Fine della trasmissione!' followed by Royal Italian March :



Fascist Hymn, 'Giovinezza' :



*Sal-ve o Po-po-lo d'E-ro-i*

and 'Signori e Signore, buona notte!' This station works in conjunction with Naples and Milan (Vigentino).

RELAY STATIONS :

Rome (2RO) : 6085, 9637, 11,810 kc/s ; 49.3, 31.13, 25.4 m. 20, 20, 9 kW.  
Rome (3RO) : 1258 kc/s ; 238.5 m. ; 1 kW.  
Milan (Vigentino) : 1348 kc/s ; 222.6 m. ; 4 kW.  
Turin (No. 2) : 1357 kc/s ; 221.1 m. ; 0.2 kW.

## SAN SEBASTIAN (EAJ 8)

### (Unión Radio), Spain

FREQUENCY : 1258 kc/s WAVELENGTH : 238.5 m. POWER : 3 kW.

DISTANCE AND BEARING FROM LONDON : 569 miles ; 190°.

CALL : 'Esta es la estación emisora EJA8 [pronounced eh-ah-hota-ocho], Unión Radio San Sebastian, instalada en el Monte Igueldo!'

Man announcer.

Closes down with the words 'Nuestra emision ha terminado, buenas tardes o noches, Señores!' followed by the Spanish National Anthem and the Regional Hymn.

## SCHWEIZERISCHER LANDESENDER

### (Beromünster), Switzerland

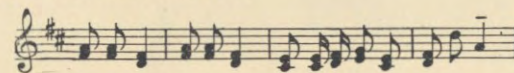
FREQUENCY : 556 kc/s WAVELENGTH : 539.6 m. POWER (COPENHAGEN) : 100 kW.

DISTANCE AND BEARING FROM LONDON : 478 miles ; 125°.

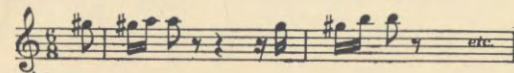
CALL : 'Hallo! Hier Schweizerischer Landessender Beromünster! Programm von Berne (or Basle or Zürich)!'

INTERVAL SIGNALS :

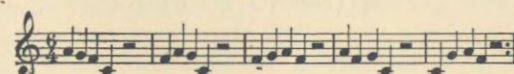
From Berne, musical-box :



From Zürich, carillon :



From Basle, Westminster chimes :



Men announcers.

Closes down for the Basle relay with either Mozart's Lullaby 'Schlafe, mein Prinzchen' or Herman Suter's 'Wettstein March' or the 'March for Drums and Fifes' (Arabi), according to the character of the programme. For Zürich and Berne an appropriate record is played.

Relays the Berne, Basle, or Zürich programmes.

Berne : 1375 kc/s ; 218.2 m. ; 0.5 kW.

Basle : 1375 kc/s ; 218.2 m. ; 0.5 kW.

Zürich has a studio, but no transmitter.



## SEVILLE (EAJ 5) (Unión Radio), Spain

FREQUENCY : 731 kc/s WAVELENGTH : 410.4 m. POWER : 1.5 kW.  
DISTANCE AND BEARING FROM LONDON : 1,018 miles ; 199°.

CALL : 'EAJ5 [pronounced eh-ah-hota thinko], Unión Radio Sevilla [pronounced Sevilya]!' Repeated between items.

Man announcer.

Closes down with the words 'Buenas noches, Señores ; hasta mañana !' followed by the Spanish National Anthem.

## SOFIA Bulgaria

FREQUENCY : 850 kc/s WAVELENGTH : 352.9 m. POWER (COPENHAGEN) : 1 kW.

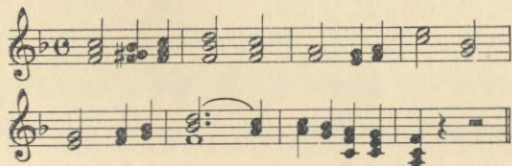
DISTANCE AND BEARING FROM LONDON : 1,250 miles ; 111°.

CALL : 'Attention ! Radio Sofia commence son émission.'

INTERVAL SIGNAL : Metronome, 84 beats.

Man and woman announcers.

Closes down with the words 'Attention ! Radio Sofia a terminé son programme. Vous nous entendrez. . . . Bonsoir, Mesdames ; bonsoir, Mesdemoiselles ; bonsoir, Messieurs !' followed by the Bulgarian National Anthem 'Shoumi Maritza'.



## STRASBOURG (Radio PTT) France

FREQUENCY : 859 kc/s WAVELENGTH : 349.2 m. POWER (COPENHAGEN) : 35 kW.

DISTANCE AND BEARING FROM LONDON : 400 miles ; 117°.

OPENING SIGNAL : Deep-toned bell sounding intermittently for five-second periods.

CALL : 'Allô ! Allô ! Ici Radio Strasbourg PTT !'

Man and woman announcers.

Announcements are made in French and German.

Independent programmes ; also relays Paris (PTT) and other PTT stations.

## STOCKHOLM Sweden

FREQUENCY : 704 kc/s WAVELENGTH : 426.1 m. POWER (COPENHAGEN) : 55 kW.

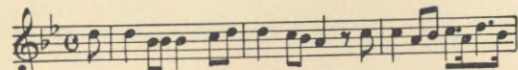
DISTANCE AND BEARING FROM LONDON : 886 miles ; 46°.

CALL : 'Stockholm Rundradio !' (Or 'Stockholm-Motala !' if Motala is relaying.)

Man announcer.

Closes down with announcement of exact time and the words 'God natt !'.

When orchestra is present in studio, the Swedish National Anthem 'Du Gamla, du Fria !' is played.



*Du gam-la du fri- a du fjell-hoga Nord, Du tys-la du glad-je-ri-ka*

### RELAY STATIONS :

Boden : 392 kc/s ; 765 m. ; 0.6 kW.

Göteborg : 941 kc/s ; 318.8 m. ; 10 kW.

Hörby : 1131 kc/s ; 265.3 m. ; 10 kW.

Malmö : 1312 kc/s ; 228.7 m. ; 1.25 kW.

Motala : 216 kc/s ; 1389 m. ; 30 kW.

Sundsvall : 601 kc/s ; 499.2 m. ; 10 kW.

and many other smaller stations.

Boden, Göteborg, Malmö, and Sundsvall, have their own studios and occasionally originate programmes.

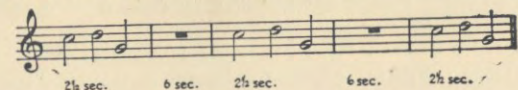
## REICHSENDER STUTTGART Germany

FREQUENCY : 574 kc/s WAVELENGTH : 522.6 m. POWER (COPENHAGEN) : 100 kW.

DISTANCE AND BEARING FROM LONDON : 453 miles ; 111°.

CALL : 'Hier ist der Reichssender Stuttgart !'

INTERVAL SIGNAL : Three notes, C, D, and G, produced by hammers (actuated by clock-work) striking metal bars.



Man announcer.

The announcement 'Hier ist die Reichssendeleitung' precedes all German broadcasts when an S.B. political programme is being transmitted.

Closes down with one verse of the 'Horst Wessel Lied' and one verse of the 'Deutschlandlied'.



## TALLINN

### Estonia

FREQUENCY : 731 kc/s WAVELENGTH : 410.4 m. POWER (COPENHAGEN) : 20 kW.

DISTANCE AND BEARING FROM LONDON : 1100 miles ; 53°.

CALL : 'Hallo! Hallo! Tallinn ja Tartu!'

Man and woman announcers.

Announcements are made in Estonian.

Closes down with the words 'Soovime kõigile hääd ööd', followed by the Estonian National Anthem.

RELAY STATION :

Tartu : 517 kc/s ; 580 m.

## TORUN

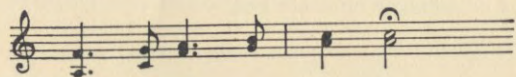
### Poland

FREQUENCY : 986 kc/s WAVELENGTH : 304.3 m. POWER : 24 kW.

DISTANCE AND BEARING FROM LONDON : 825 miles ; 76°.

CALL : 'Hallo! Hallo! Polskie Radio Torun!'

INTERVAL SIGNAL : A few bars from a folk-song by Moniuszko.



Man announcer.

Announcements are made in Polish.

Closes down with the words 'Zytshymy vshystkim dobrey notsy!' followed by the Polish National Anthem 'Dombrowski Mazurka'.

## TOULOUSE-PYRÉNÉES (PTT)

### France

FREQUENCY : 776 kc/s WAVELENGTH : 386.6 m. POWER (COPENHAGEN) : 2 kW.

DISTANCE AND BEARING FROM LONDON : 552 miles ; 172°.

CALL : 'Allô! Allô! Ici Toulouse-Pyrénées, Réseau d'État!'

INTERVAL SIGNAL : Air 'La Tyrolienne des Pyrénées'.

Closes down with the air 'La Tyrolienne des Pyrénées', followed by the usual French formula.

Independent programmes ; also relays Paris (PTT) and other PTT stations.

## TOULOUSE (Radio)

### France

FREQUENCY : 913 kc/s WAVELENGTH : 328.6 m. POWER (COPENHAGEN) : 60 kW.

DISTANCE AND BEARING FROM LONDON : 552 miles ; 172°.

CALL : 'Allô! Ici Radio Toulouse! Émissions de la Radiophonie du Midi!'

INTERVAL SIGNAL : Strokes on a gong at intervals of a second.

Man announcer.

Closes down with the local patriotic march 'La Toulousaine', followed by the usual French formula.

## TRIESTE (1 TS)

### Italy

FREQUENCY : 1222 kc/s WAVELENGTH : 245.5 m. POWER (COPENHAGEN) : 10 kW.

DISTANCE AND BEARING FROM LONDON : 755 miles ; 117°.

OPENING SIGNAL : Bell (gramophone).

CALL : 'Ente Italiano Audizioni Radiofoniche EIAR [pronounced eh-yar], Stazione di Trieste-Milano-Torino-Genova-Firenze!'

INTERVAL SIGNAL : Song of the nightingale (musical-box).

Woman announcer.

Closes down with the words 'Ente Italiano Audizioni Radiofoniche EIAR, Stazione di Trieste-Milano-Torino-Genova-Firenze! Fine della trasmissione!' followed by Royal Italian March, Fascist Hymn 'Giovinezza', and 'Signori e Signore, buona notte!'

This station works in conjunction with Milan, Turin, Genoa, and Florence.

## TURIN (1 TO)

### Italy

FREQUENCY : 1140 kc/s WAVELENGTH : 263.2 m. POWER (COPENHAGEN) : 7 kW.

DISTANCE AND BEARING FROM LONDON : 575 miles ; 138°.

OPENING SIGNAL : Bell (gramophone).

CALL : 'Ente Italiano Audizioni Radiofoniche EIAR [pronounced eh-yar], Stazione di Torino-Milano-Genova-Trieste-Firenze!'

INTERVAL SIGNAL : Song of the nightingale (musical-box).

Man and woman announcers.

Closes down with the words 'Ente Italiano Audizioni Radiofoniche EIAR, Stazione di Torino-Milano-Genova-Trieste-Firenze! Fine della trasmissione!' followed by Royal Italian March, Fascist Hymn 'Giovinezza', and 'Signori e Signore, buona notte!'

This station works in conjunction with Milan, Genoa, Trieste, and Florence.



## VIENNA (Bisamberg)

### Austria

FREQUENCY: 592 kc/s WAVELENGTH: 506.8 m. POWER (COPENHAGEN): 100 kW.

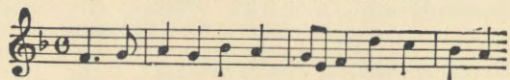
DISTANCE AND BEARING FROM LONDON: 767 miles; 101°.

CALL: 'Hallo! Hallo! Radio Wien!'

INTERVAL SIGNAL: Ticking of metronome (270 beats to the minute).

Man announcer.

Closes down with the words 'Radio Wien beschliesst seine heutige Sendung mit der osterreichlichen Bundeshymne. Gute Nacht, meine Damen; gute Nacht, meine Herren!' followed by the Austrian National Anthem.



Sei ge—seg—net oh—ne En—de Hei—mat—er—de

#### RELAY STATIONS:

Graz: 886 kc/s; 338.6 m.; 7 kW.

Innsbruck: 519 kc/s; 578 m.; 1 kW.

Klagenfurt: 1294 kc/s; 231.8 m.; 4.2 kW.

Linz: 1294 kc/s; 231.8 m.; 0.5 kW.

Dornbirn: 1294 kc/s; 231.8 m.; 0.5 kW.

Salzburg: 1348 kc/s; 222.6 m.; 0.5 kW.

Vorarlberg: 1294 kc/s; 231.8 m.; 2 kW.

## WARSAW (No. 1)

### Poland

FREQUENCY: 224 kc/s WAVELENGTH: 1339 m. POWER (COPENHAGEN): 120 kW.

DISTANCE AND BEARING FROM LONDON: 899 miles; 78°.

OPENING SIGNAL: Morse letter W (.-.-), followed by a hymn.

CALL: 'Hallo! Hallo! Polskie Radjo Warszawa!'

INTERVAL SIGNAL: A few bars from Chopin's Polonaise in A major.



Metronome before each transmission of a news bulletin broadcast five to six times a day.

Man and woman announcers.

On occasion, announcements are given in French, English, and German, as well as in Polish.

Closes down with the words 'Zytshymy vshystkim dobrej notsy!' followed by the Polish National Anthem 'Dombrowski Mazurka'.



#### RELAY STATIONS:

Warsaw (No. 2): 1384 kc/s; 216.8 m.; 2 kW.

Torun: 986 kc/s; 304.3 m.; 24 kW.

Łódź: 1339 kc/s; 224 m.; 1.7 kW.

## WILNO

### Poland

FREQUENCY: 536 kc/s WAVELENGTH: 559.7 m. POWER (COPENHAGEN): 16 kW.

DISTANCE AND BEARING FROM LONDON: 1,070 miles; 68°.

OPENING SIGNAL: Three blasts on a trumpet-like instrument, followed by general call: 'Uwaga! Uwaga [pronounced oovagha]! Polskie Radjo Wilno!'

CALL: 'Hallo! Hallo! Polskie Radjo Wilno!'

INTERVAL SIGNAL: Cuckoo. When relaying Warsaw, morse letter W (.-.-).

Man and woman announcers.

Apart from local transmissions, Wilno frequently relays programmes from Warsaw and other Polish stations.

Closes down with the words 'Zytshymy vshystkim dobrej notsy!' followed by the Polish National Anthem 'Dombrowski Mazurka'.

## ZAGREB

### Yugoslavia

FREQUENCY: 1086 kc/s WAVELENGTH: 276.2 m. POWER (COPENHAGEN): 0.7 kW.

DISTANCE AND BEARING FROM LONDON: 830 miles; 112°.

OPENING AND INTERVAL SIGNALS: Ticking of metronome.

CALL: 'Radio Zagreb zapocinje svoju podnevnu emisiju!'

Man announcer.

Announcements are made in Serbo-Croatian, French, and German.

Closes down (10 p.m. G.M.T.) with the words 'Radio Zagreb završava današnju emisiju, sutrašnja pocinje u . . . čas', followed by the Croatian National Anthem (gramophone record).



## APPENDIX

### A FEW AMERICAN STATIONS

#### ATLANTIC CITY (WPG) New Jersey, U.S.A.

FREQUENCY: 1100 kc/s WAVELENGTH: 273 m. POWER: 5 kW.

DISTANCE FROM LONDON: 3,020 miles.

CALL: WPG.

Man and woman announcers.

Closes down with the words 'Station WPG now signing off until 8 a.m. to-morrow morning. Good night!'

#### BOUND BROOK (WJZ) New Jersey, U.S.A.

FREQUENCY: 760 kc/s WAVELENGTH: 395 m. POWER: 30 kW.  
(20 kW experimental).

DISTANCE FROM LONDON: 3,000 miles.

CALL: 'This is WJZ [pronounced zee]!'

Man announcer.

Closes down with the words 'This is the National Broadcasting Company's Station WJZ, New York, signing off until . . . ! It is now 1 a.m. Good night!'

#### EAST PITTSBURGH (KDKA) Pennsylvania, U.S.A.

FREQUENCY: 980 kc/s WAVELENGTH: 306 m. POWER: 50 kW.

DISTANCE FROM LONDON: 3,320 miles.

CALL: 'This is KDKA, the Westinghouse Electric Broadcasting Station of Pittsburgh, calling!'

No interval signal, but 'KDKA, East Pittsburgh!' repeated between items.

Man announcer.

Closes down with the words 'This is the Westinghouse Radio Station KDKA operating on a frequency of 980 kc/s by authority of the Federal Radio Commission!'

RELAY STATIONS:

W8XK	{	6140 kc/s; 48.86 m.; 40 kW.
		11,870 kc/s; 25.27 m.; 40 kW.
		15,210 kc/s; 19.72 m.; 40 kW.
		21,540 kc/s; 13.93 m.; 40 kW.

#### SCHENECTADY (WGY) New York State, U.S.A.

FREQUENCY: 790 kc/s WAVELENGTH: 379.5 m. POWER: 50 kW.

DISTANCE FROM LONDON: 3,000 miles.

CALL: 'WGY, the General Electric Company's Station at Schenectady!'

Closes down with the words 'Good evening to you all!'

RELAY STATIONS:

W2XAD 15,330 kc/s; 19.56 m.; 20 kW.

W2XAF 9530 kc/s; 31.48 m.; 40 kW.

### A FEW SHORT-WAVE STATIONS

#### BOMBAY (VUB) India

FREQUENCY: 9565 kc/s WAVELENGTH: 31.36 m. POWER: 4.5 kW.

CALL: 'Bombay calling—call-sign VUB! This is the Bombay Station of the Indian State Broadcasting Service!' (and then the exact Indian Standard Time is stated).

INTERVAL SIGNAL: 'Bombay calling!'

Man announcer.

Closes down with the words 'This concludes our transmission, and the Bombay Station of the Indian State Broadcasting Service is closing down until to-morrow!' (then the exact Indian Standard Time is stated). 'Good night, everybody!' followed by the National Anthem.

#### BOUND BROOK (W3XAL) New Jersey, U.S.A.

FREQUENCIES: 6100 and 17,780 kc/s WAVELENGTHS: 49.18 and 16.87 m. POWER: 15 kW.

DISTANCE FROM LONDON: 3,000 miles.

CALL: 'W3XAL, Bound Brook, New Jersey!' Frequency and wavelength are then given.

INTERVAL SIGNAL: Chimes.

Man announcer.

Closes down with the words 'W3XAL, Bound Brook, New Jersey!' Frequency and wavelength are then given.

#### BOWMANVILLE (VE9GW) Canada

FREQUENCY: 6090 kc/s WAVELENGTH: 49.26 m. POWER: 0.5 kW.

CALL: 'The Canadian Radio Commission Station VE9GW operating on a frequency of 6.095 kc/s, 49.26 metres!'

INTERVAL SIGNAL: Announcement every 15 minutes as above.

Man announcer.

Closes down with the same announcement.



## CALCUTTA (VUC)

### India

FREQUENCY: 6110 kc/s WAVELENGTH: 49.1 m. POWER: 0.5 kW.  
OPENING CALL: 'Hallo everybody! This is Calcutta Station calling!'

INTERVAL SIGNAL: None.

Man and woman announcers.

Announcements are made in English, Bengali, and Hindustani.  
Closes down with the words 'That concludes the transmission from the Calcutta Station. We are now closing down until . . . .'

## CARACAS (YV2RC)

### Venezuela

FREQUENCY: 6112 kc/s WAVELENGTH: 49.08 m. POWER: 0.25 kW.  
CALL: 'Broadcasting Caracas (four bells) YV1RC\* and YV2RC Stations, working on frequencies of 960 and 6,112 kc/s, of the Almacén Americano RCA-Victor distributors for Venezuela!'

INTERVAL SIGNAL: Broadcasting Caracas (four bells) YV1RC and YV2RC Stations—960 and 6,112 kc/s!'

Man announcer.

Announcements are made in English and Spanish.

Closes down with call, followed by the official march 'IBC'.

\* This is a medium-wave station.

## CHICAGO (W9XF)

### Illinois, U.S.A.

FREQUENCY: 6100 kc/s WAVELENGTH: 49.18 m. POWER: 10 kW.  
OPENING CALL: No particular call. Usual sign-on announcement is used.

INTERVAL SIGNAL: National Broadcasting Company chimes, three notes.

Man announcer.

CLOSING ANNOUNCEMENT: Regular sign-off announcement inviting listeners to send reports of reception.

## DAVENTRY

### Great Britain

CALL SIGN	FREQUENCY	WAVELENGTH
GSA	6050 kc/s	49.59 m.
GSB	9510 kc/s	31.55 m.
GSC	9580 kc/s	31.32 m.
GSD	11,750 kc/s	25.53 m.
GSE	11,860 kc/s	25.29 m.
GSF	15,140 kc/s	19.82 m.
GSG	17,790 kc/s	16.86 m.
GSH	21,470 kc/s	13.97 m.
GSI	15,260 kc/s	19.66 m.
GSJ	21,530 kc/s	13.93 m.
GSL	6110 kc/s	49.1 m.

POWER: 10 to 15 kW.

CALL: 'This is the British Empire Broadcasting Station at Daventry!'

INTERVAL SIGNAL: Bow Bells.

Man announcer.

Closes down with the National Anthem.

## HAVANA (COC)

### Cuba

FREQUENCY: 6010 kcs WAVELENGTHS: 49.92 m. POWER: 0.5 kW.

OPENING CALL: 'COC, Havana, Cuba!'

INTERVAL SIGNAL: None.

CLOSING ANNOUNCEMENT: 'COC, Post Office Box 98, Havana!'

Man announcer.

Announcements are made in English and Spanish.

## PARIS (Radio Colonial)

### France

FREQUENCIES: 11,720, 11,880, and 15,243 kc/s WAVELENGTHS: 25.6, 25.23, and 19.68 m. POWER: 10 kW.

DISTANCE AND BEARING FROM LONDON: 200 miles; 150°.

Relays Paris (PTT).

## PHILADELPHIA (W3XAU)

### Pennsylvania, U.S.A.

FREQUENCIES: 9590 kc/s; 6060 kc/s WAVELENGTHS: 31.28 m. 49.5 m. POWER: 1 kW.

OPENING CALL: None.

INTERVAL SIGNAL: None.

CLOSING ANNOUNCEMENT: Changed periodically.

Man announcer.

## ROME (2 RO)

### Italy

FREQUENCIES: 6085, 9637, 11,810 kc/s WAVELENGTHS: 49.3; 31.13, 25.4 m. POWER: 20, 20, 9 kW.

DISTANCE AND BEARING FROM LONDON: 890 miles; 133°.

Relays Rome (IRO).

## SCHENECTADY (W2XAD)

### New York State, U.S.A.

FREQUENCY: 15,330 kc/s WAVELENGTH: 19.56 m. POWER: 20 kW.

DISTANCE FROM LONDON: 3,000 miles.

Relays Schenectady (WGY).



**SCHENECTADY (W2XAF)****New York State, U.S.A.**

FREQUENCY : 9530 kc/s WAVELENGTH : 31.48 m. POWER : 40 kW.

DISTANCE FROM LONDON : 3,000 miles.

Relays Schenactady (WGY).

**SKAMLEBÆK (OXY)****Denmark**

FREQUENCY : 6060 kc/s WAVELENGTH : 49.5 m. POWER : 0.5 kW.

DISTANCE AND BEARING FROM LONDON : 595 miles ; 56°.

Relays the Copenhagen programme.

**SYDNEY (VK2ME)****Australia**

FREQUENCY : 9590 kc/s WAVELENGTH : 31.28 m. POWER : 20 kW.

DISTANCE FROM LONDON : 10,500 miles.

OPENING SIGNAL : Laugh of the kookaburra (a native bird).

Station call-letters and studio time are given after almost every item.

**VATICAN CITY (HVJ)****Italy**

FREQUENCIES : 5969 and 15,123 kc/s WAVELENGTHS : 50.26 and 19.84 m. POWER : 10 kW.

DISTANCE AND BEARING FROM LONDON : 890 miles ; 133°.

CALL : HVJ.

INTERVAL SIGNAL : Ticking of clock.

Man announcer.

Closes down with the words 'Laudetur Jesus Christus!'

**ZEESEN (DJA)****Germany (Experimental)**

FREQUENCY : 9560 kc/s WAVELENGTH : 31.38 m. POWER : 5 kW.

DISTANCE AND BEARING FROM LONDON : 588 miles ; 79°.

Relays the Deutschlandsender and Reichssender Berlin programmes.

**STATIONS IN ORDER OF FREQUENCIES AND WAVELENGTHS**

kc/s	m.	kW	Station	Relays
<i>Band No. 1 150-300 kc/s</i>				
155	1935	7	Kaunas (Kovno) (Lithuania)	
160	1875	20	Brasov (Romania)	
160	1875	7	Huizen (Holland)	Hilversum
160	1875	50	Kootwijk (Holland)	Hilversum
<i>(Transmits Hilversum Programme after 3.40 p.m. B.S.T.)</i>				
166	1807	40	Lahti (Finland)	Helsinki
174	1724	500	Moscow I (U.S.S.R.)	
182	1648	80	Paris (Poste National Radio Paris) (France)	
187.5	1600	5	Istanbul (Constantinople) (Turkey)	
191	1571	60	Deutschlandsender (Königs Wusterhausen) (Germany)	
200	1500	150	Droitwich National (Great Britain)	
200	1500	35	Irkoutsk (U.S.S.R.)	
208	1442	35	Minsk (U.S.S.R.)	
208	1442	16	Reykjavik (Iceland)	
216	1389	30	Motala (Sweden)	Stockholm
217.5	1379	100	Novosibirsk (U.S.S.R.)	
224	1339	120	Warsaw I (Poland)	
230	1304	7	Ankara (Turkey)	
230	1304	150	Luxembourg	
232	1293	20	Kharkov (U.S.S.R.)	
238	1261	60	Kalundborg (Denmark)	Copenhagen
240	1250	0.5	Vienna (Experimental) (Austria)	
245	1224	100	Leningrad (RV53) (U.S.S.R.)	
256.4	1170	25	Tashkent (U.S.S.R.)	
260	1154	60	Oslo (Norway)	
271	1107	100	Moscow II (U.S.S.R.)	
280	1071.4	35	Tiflis (U.S.S.R.)	
<i>Band No. 2 300-500 kc/s</i>				
355	845	10	Finnmark (Vadsø) (Norway)	Oslo
355	845	20	Rostov-on-Don (U.S.S.R.)	
359.5	834.5	20	Budapest II (Hungary)	Budapest I
375	800	50	Sverdlovsk (U.S.S.R.)	
392	765	0.6	Boden (Sweden)	Stockholm
401	748	1.3	Geneva (Switzerland)	
401	748	100	Moscow III (U.S.S.R.)	
413.5	726	0.6	Ostersund (Sweden)	Stockholm
413.5	726	10	Voronezh (U.S.S.R.)	
431	696	1.2	Oulu (Uleaborg) (Finland)	Helsinki
436	688	10	Ufa (U.S.S.R.)	
<i>Band No. 3 500-1500 kc/s</i>				
517	580		Tartu (Estonia)	Tallinn
519	578	0.7	Hamar (Norway)	Oslo
519	578	1	Innsbruck (Austria)	Vienna
527	569.3	5	Ljubljana (Yugoslavia)	
527	569.3	10	Viipuri (Viborg) (Finland)	Helsinki
536	559.7	1	Bolzano (IBZ) (Italy)	
536	559.7	16	Wilno (Poland)	Warsaw I
546	549.5	120	Budapest I (Hungary)	

9:40 pm Daily



kc/s	m.	kW	Station	Relays
556	539.6	100	Schweizerischer Landessender (Beromünster) (Switzerland)	Basle, Berne, and Zurich
565	531	60	Athlone (Irish Free State)	
565	531	4	Palermo (IPA) (Italy)	
574	522.6	100	Stuttgart (Germany)	
583	514.6	15	Alpes-Grenoble (PTT) (France)	Paris (PTT)
583	514.6	15	Riga (Latvia)	
592	506.8	100	Vienna (Bisamberg) (Austria)	
601	499.2	25	Rabat I (Morocco)	
601	499.2	10	Sundsvall (Sweden)	Stockholm
610	491.8	20	Florence (IFI) (Italy)	
620	483.9	15	Brussels I (Belgium)	
620	483.9	20	Cairo I (Egypt)	
629	476.9	20	Lisbon (Emissora Nacional) (Portugal)	
629	476.9	20	Trøndelag (Trondheim) (Norway)	Oslo
638	470.2	120	Prague I (Czechoslovakia)	
648	463	15	Lyons-la-Doua (PTT) (France)	Paris (PTT)
648	463	10	Petrozavodsk (U.S.S.R.)	
658	455.9	100	Cologne (Germany)	
668	449.1	50	North Regional (Moorside Edge) (Great Britain)	
677	443.1	25	Émetteur National Suisse Romand (Sottens) (Switzerland)	Geneva and Lausanne
686	437.3	2.5	Belgrade (Yugoslavia)	
695	431.7	7	Paris (PTT) (France)	
704	426.1	55	Stockholm (Sweden)	
713	420.8	50	Rome (IRO) (Italy)	
722	415.5	36	Kiev (U.S.S.R.)	
731	410.4	3	Madrid (Radio España) (Spain)	
731	410.4	1.5	Seville (EAJ5) (Spain)	
731	410.4	20	Tallinn (Estonia)	
740	405.4	100	Munich (Germany)	
749	400.5	5	Marseilles-Provence (PTT) (France)	Paris (PTT)
749	400.5	1	Pori (Björneborg) (Finland)	Helsinki
749	400.5	0.2	Sortavala (Finland)	Helsinki
758	395.8	12	Katowice (Poland)	Warsaw I
767	391.1	50	Scottish Regional (Westerglen) (Great Britain)	
776	386.6	0.7	Fredrikstad (Norway)	Oslo
776	386.6	10	Stalino (U.S.S.R.)	
776	386.6	2	Toulouse-Pyrénées (PTT) (France)	Paris (PTT)
785	382.2	120	Leipzig (Germany)	
795	377.4	5	Barcelona (EAJI) (Spain)	
795	377.4	16	Lwów (Poland)	Warsaw I
804	373.1	50	West Regional (Washford Cross) (Great Britain)	
814	368.6	50	Milan (IMI) (Italy)	
823	364.5	12	Bucharest (Romania)	
832	360.6	100	Moscow IV (U.S.S.R.)	
841	356.7	100	Berlin (Germany)	
850	352.9	0.35	Aalesund (Norway)	Oslo
850	352.9	1	Bergen (Norway)	Oslo
850	352.9	0.5	Bodø (Norway)	Oslo

kc/s	m.	kW	Station	Relays
850	352.9	0.7	Porsgrund (Norway)	Oslo
850	352.9	1	Sofia (Bulgaria)	
850	352.9	1.5	Valencia (Spain)	
859	349.2	10	Simferopol (U.S.S.R.)	
859	349.2	35	Strasbourg (Radio PTT) (France)	Paris (PTT)
868	345.6	16	Agen (France)	
868	345.6	16	Poznań (Poland)	Warsaw I
877	342.1	50	London Regional (Great Britain)	
886	338.6	7	Graz (Austria)	Vienna
895	335.2	10	Helsinki (Helsingfors) (Finland)	
904	331.9	100	Hamburg (Germany)	
913	328.6	10	Dniepropetrovsk (U.S.S.R.)	
913	328.6	0.5	Limoges (Radio PTT) (France)	Paris (PTT)
913	328.6	60	Toulouse (Radio Toulouse) (France)	
922	325.4	32	Brno (Czechoslovakia)	
932	321.9	15	Brussels II (Belgium)	
941	318.8	12	Algiers (Radio PTT) (Algeria)	Paris (PTT)
941	318.8	10	Göteborg (Sweden)	Stockholm
950	315.8	100	Breslau (Germany)	
959	312.8	60	Paris (Poste Parisien) (France)	
968	309.9	10	Odessa (U.S.S.R.)	
968	309.9	2	Ukhta (U.S.S.R.)	
977	307.1	1	Belfast (Northern Ireland)	
986	304.3	10	Genoa (IGE) (Italy)	
986	304.3	24	Torun (Poland) ( <i>Testing</i> )	
995	301.5	20	Hilversum (Holland)	
1004	298.8	13.5	Bratislava (Czechoslovakia)	
1013	296.2	5	Chernigov (U.S.S.R.)	
1013	296.2	50	Midland Regional (Droitwich) (Great Britain)	
1022	293.5	3	Barcelona (EAJ15) (Spain)	
1022	293.5	2	Cracow (Poland)	
1022	293.5	0.7	Oviedo (Spain)	
1031	291	17	Königsberg (Heilsberg) (Germany)	
1031	291	5	Paredo (Portugal)	
1040	288.5	10	Leningrad II (U.S.S.R.)	
1040	288.5	40	Rennes-Bretagne (PTT) (France)	Paris (PTT)
1050	285.7	50	Scottish National (Westerglen) (Great Britain)	
1059	283.3	20	Bari (Italy)	
1068	280.9	4	Tiraspol (U.S.S.R.)	
1077	278.6	30	Bordeaux-Lafayette (PTT) (France)	Paris (PTT)
1086	276.2	2	Falun (Sweden)	Stockholm
1086	276.2	0.7	Zagreb (Yugoslavia)	
1095	274	7	Madrid (EAJ7) (Spain)	
1095	274	10	Vinnitsa (U.S.S.R.)	
1104	271.7	50	Madona (Latvia)	Riga
1104	271.7	1.5	Naples (INA) (Italy)	Rome I
1113	269.5	11.2	Moravská-Ostrava (Czechoslovakia)	
1113	269.5	10	Radio Normandie (Fécamp) (France)	
1122	267.4	0.25	Alexandria I (Egypt)	



kc/s	m.	kW	Station	Relays
1122	267.4	1	Newcastle-on-Tyne (Great Britain)	
1122	267.4	6.2	Nyiregyháza (Hungary)	Budapest I
1131	265.3	10	Hörby (Sweden)	Stockholm
1140	263.2	7	Turin (ITO) (Italy)	
1149	261.1	20	London National (Great Britain)	
1149	261.1	20	North National (Moorside Edge) (Great Britain)	
1149	261.1	20	West National (Washford Cross) (Great Britain)	
1158	259.1	2.6	Košice (Czechoslovakia)	
1167	257.1	15	Monte Ceneri (Switzerland)	
1176	255.1	10	Copenhagen (Denmark)	
1185	253.2	10	Kharkov II (U.S.S.R.)	
1195	251	1.5	Cassel (Germany)	Frankfurt
1195	251	1.5	Coblenz (Germany)	Frankfurt
1195	251	17	Frankfurt (Germany)	
1195	251	5	Freiburg-im-Breisgau (Germany)	Frankfurt
1195	251	1.5	Kaiserslautern (Germany)	Frankfurt
1195	251	2	Trier (Germany)	Frankfurt
1204	249.2	5	Prague II (Czechoslovakia)	Prague I
1204	249.2	0.1	Tromsø (Norway)	Oslo
1213	247.3	5	Lille (Radio PTT Nord) (France)	Paris (PTT)
1222	245.5	10	Trieste (ITS) (Italy)	
1231	243.7	5	Gleiwitz (Germany)	Breslau
1240	241.9	1	Cork (6CK) (Irish Free State)	Athlone
1240	241.9		Swedish Relay Stations	
1249	240.2	2	Juan-les-Pins (Radio Côte d'Azur) (France)	
1258	238.5	10	Kuldiga (Latvia)	Riga
1258	238.5	1	Rome (3RO) (Italy)	Rome I
1258	238.5	3	San Sebastian (EAJ8) (Spain)	
1267	236.8	2	Nürnberg (Germany)	Munich
1276	235.1	0.5	Christiansand (Norway)	Oslo
1276	235.1	0.5	Stavanger (Norway)	Oslo
1285	233.5	1	Aberdeen (Great Britain)	
1285	233.5	1.5	Dresden (Germany)	Leipzig
1294	231.8	0.5	Dornbirn (Austria)	Vienna
1294	231.8	4.2	Klagenfurt (Austria)	Vienna
1294	231.8	0.5	Linz (Austria)	Vienna
1294	231.8	2	Vorarlberg (Austria)	Vienna
1303	230.2	0.5	Danzig (Danzig Free City)	Königsberg
1312	228.7	0.25	Karlstad (Sweden)	Stockholm
1312	228.7	1.25	Malmö (Sweden)	Stockholm
1312	228.7	0.25	Norrköping (Sweden)	Stockholm
1312	228.7	0.25	Trollhättan (Sweden)	Stockholm
1321	227.1	1.25	Magyaróvár (Hungary)	Budapest I
1330	225.6	1.5	Bremen (Germany)	Hamburg
1330	225.6	1.5	Flensburg (Germany)	Hamburg
1330	225.6	1.5	Hanover (Germany)	Hamburg
1330	225.6	1.5	Magdeburg (Germany)	Hamburg
1330	225.6	1.5	Stettin (Germany)	Hamburg
1339	224	1.7	Łódź (Poland)	Warsaw
1339	224	5	Montpellier (PTT) (France)	Paris (PTT)
1348	222.6	1	Bordeaux Sud-Ouest (France)	
1348	222.6	0.5	Cairo II (Egypt)	Cairo I
1348	222.6	0.5	Dublin (2RN) (Irish Free State)	Athlone

kc/s	m.	kW	Station	Relays
1348	222.6	1.5	Königsberg II (Germany)	Königsberg I
1348	222.6	2	L'Île de France (France)	
1348	222.6	4	Milan (Vigentino) (Italy)	Rome I
1348	222.6	0.15	Rjukan (Norway)	Oslo
1348	222.6	0.5	Salzburg (Austria)	Vienna
1357	221.1	0.15	Notodden (Norway)	Oslo
1357	221.1	0.2	Turin II (Italy)	Rome I
1375	218.2	0.5	Basle (Switzerland)	
1375	218.2	0.5	Berne (Switzerland)	
1384	216.8	2	Warsaw II (Poland)	Warsaw I
1393	215.4	5	Lyons (Radio Lyon) (France)	
1402	214		Swedish Common Wave	
1411	212.6		Portuguese Common Wave	
1420	211.3	0.7	Tampere (Tammerfors) (Finland)	Helsinki
1424	210.7	0.8	Paris (Radio LL) (France)	
1429	209.9	0.5	Alexandria II (Egypt)	Alexandria I
1429	209.9	1.5	Béziers (France)	
1429	209.9	0.5	Turku (Åbo) (Finland)	Helsinki
1438	208.6	1.25	Miskolc (Hungary)	Budapest I
1447	207.3		Spanish Common Wave	
1456	206	5	Paris (Eiffel Tower) (France)	
1465	204.8	0.1	Antwerp (Belgium)	
1465	204.8	0.1	Courtrai (Belgium)	
1465	204.8	1.25	Pecs (Hungary)	Budapest I
1474	203.5	1	Bournemouth (Great Britain)	
1474	203.5	0.3	Plymouth (Great Britain)	
1492	201.1		Albacete (Spain)	
1492	201.1		Alcoy (Spain)	
1492	201.1	0.1	Binche (Belgium)	
1492	201.1	0.1	Chatelineau (Belgium)	
1492	201.1	0.1	Liège (Radio Wallonia) (Belgium)	
1492	201.1	0.2	Nîmes (France)	
1492	201.1		Santiago de Compostela (Spain)	
1500	200	0.2	Alcalá de Henares (Spain)	
1500	200	0.1	Liège (Experimental) (Belgium)	
1500	200	0.1	Liège (Radio Cointe) (Belgium)	
1500	200	1.0	Liège (Radio Wallonia) (Belgium)	
1500	200	0.25	Pietarsaari (Jakobstod) (Finland)	Helsinki
1500	200	0.1	Seraing (Belgium)	
1500	200	0.1	Verviers (Belgium)	
1530	196	0.2	Karlskrona (Sweden)	Stockholm
1737	173	0.1	Liepāja (Latvia)	Riga

#### APPENDIX

1100	273	5	Atlantic City (WPG) (New Jersey, U.S.A.)
760	395	30	Bound Brook (WJZ) (New Jersey, U.S.A.)
980	306	50	East Pittsburgh (KDKA) (Pennsylvania, U.S.A.)
790	379.5	50	Schenectady (WGY) (New York State, U.S.A.)



## SHORT-WAVE BROADCASTING STATIONS

NOTE.—Transmission times for the following short-wave stations can be found on the Short-wave Broadcasting Page in World Radio.

m.	kc/s	kW	Station
84.67	3543	0.15	Mozambique (CR7AA) East Africa
75	4000	0.05	Ponta Delgada (CT2AJ) Azores
73	4110	0.5	Quito (HCJB) Ecuador
70.2	4273	20	Kharbarovsk (RV15) U.S.S.R.
67.11	4470	1	Sourabaya (YDB) Java
58.31	5145		Prague (OK1MPT) Czechoslovakia Experimental
52.7	5692	0.5	Tananarive (FIQA) Madagascar
51.28	5850		Maracaibo (YV5RMO) Venezuela
50.42	5950	0.05	Medellin (HJ4ABE) Colombia
50.26	5969	10	Vatican City (HVJ) Italy
50.16	5980	0.2	Santo Domingo (HIX) Dominican Republic
50	6000	20	Moscow (RW59) U.S.S.R.
49.96	6005	{ 1.6 4	Bogotá (HJ3ABH) Colombia Montreal (VE9DN) Canada
49.92	6010	0.5	Havana (COC) Cuba
49.85	6018	0.09	Singapore (ZHI) Straits Settlements
49.83	6020	5	Zeesen (DJC) Germany
49.75	6030	0.1	Panama City (HP5B)
49.67	6040	5	Boston (W1XAL) U.S.A.
49.59	6050	15	*Daventry (GSA) Great Britain
49.5	6060	{ 10 1 0.5	Cincinnati (W8XAL) U.S.A. Philadelphia (W3XAU) U.S.A. Skamlebak (OXY) Denmark
49.43	6069	0.007	Vancouver (VE9CS) Canada
49.4	6072	0.25	Vienna Experimental (OER2) Austria
49.4	6072	2	Lisbon (CT1AA) Portugal
49.33	6080	{ 0.5 1	Chicago (W9XAA) U.S.A. La Paz (CP5) Bolivia
49.3	6085	20	Rome (2RO) Italy
49.26	6090	{ 0.5 0.1	Bowmanville (VE9GW) Canada St. John (VE9BJ) Canada
49.2	6097	5	Johannesburg (ZTJ) South Africa. Experimental
49.18	6100	{ 15 10	Bound Brook (W3XAL) U.S.A. Chicago (W9XF) U.S.A.
49.1	6110	{ 15 0.5	*Daventry (GSL) Great Britain Calcutta (VUC) India
49.08	6112	0.25	Caracas (YV2RC) Venezuela
49.02	6120	{ 1.5 0.5 1	Bandoeng (YDA) Java Nairobi (VQ7LO) Kenya Wayne (W2XE) U.S.A.

\* The Empire Transmitters are occasionally interchanged.

m.	kc/s	kW	Station
48.93	6130	1	Jeløy (LKJ1) Norway
48.92	6132	0.18	Kuala Lumpur (ZGE) Federated Malay States
48.86	6140	40	Pittsburgh (W8XK) U.S.A.
48.78	6150	{ 0.5 2	Caracas (YV3RC) Venezuela Lisbon (CSL) Portugal Winnipeg (CJRO) Canada
48.4	6198	0.35	Parede (CT1GO) Portugal
47.5	6316		Santo Domingo (HIZ) Dominican Republic
47.05	6375		Caracas (YV4RC) Venezuela
46.69	6425	18	Bound Brook (W3XL) U.S.A. Experimental
46.52	6447	0.3	Barranquilla (HJ1ABB) Colombia
46.21	6490	0.1	Cali (HJ5ABD) Colombia
46	6520	0.5	Valencia (YV6RV) Venezuela
45.38	6610	10	Moscow (RW72) U.S.S.R.
45.31	6620		Riobamba (PRADO) Ecuador
45	6667	0.2	Guayaquil (HC2RL) Ecuador
42.02	7140	0.3	Manizales (HJ4ABB) Colombia
41.8	7177	0.5	Lobito (CR6AA) Angola
38.48	7797	20	Radio Nations (HBP) Switzerland
37.33	8035	10	Rabat (Radio Maroc) (CNR) Morocco
32.88	9134	20	Budapest (HAT4) Hungary
31.8	9428		Havana (COH) Cuba
31.58	9501	15	Rio de Janeiro (PRF5) Brazil
31.55	9510	15	*Daventry (GSB) Great Britain
31.54	9518	1.5	Melbourne (VK3ME) Australia
31.48	9530	40	Schenectady (W2XAF) U.S.A.
31.45	9540	5	Zeesen (DJN) Germany
31.38	9560	5	Zeesen (DJA) Germany
31.36	9565	4.5	Bombay (VUB) India
31.35	9570	10	Springfield (W1XK) U.S.A.
31.33	9572	1	Jeløy (LKJ1) Norway
31.32	9580	{ 15 0.6	*Daventry (GSC) Great Britain Lyndhurst (VK3LR) Australia
31.28	9590	{ 1 20	Philadelphia (W3XAU) U.S.A. Sydney (VK2ME) Australia
31.27	9595	20	Radio Nations (HBL) Switzerland
31.25	9600	2	Lisbon (CT1AA) Portugal
31.13	9637	20	Rome (2RO) Italy
31	9677	0.5	Lisbon (CT1CT) Portugal
30.43	9860	20	Madrid (EAQ) Spain
29.04	10,330	9	Ruysselede (ORK) Belgium
28.98	10,350	20	Buenos Aires (LSX) Argentine
25.65	11,695	0.2	Caracas (YV3RC) Venezuela

\* The Empire Transmitters are occasionally interchanged.



m.	kc/s	kW	Station
25.6	11,720	{ 10 2	Paris (Radio Colonial) (FYA) France Winnipeg (CJRX) Canada
25.53	11,750	15	*Daventry (GSD) Great Britain
25.49	11,770	5	Zeesen (DJD) Germany
25.45	11,790	5	Boston (W1XAL) U.S.A.
25.4	11,810	9	Rome (2RO) Italy
25.36	11,830	1	Wayne (W2XE) U.S.A.
25.29	11,860	15	*Daventry (GSE) Great Britain
25.27	11,870	40	Pittsburgh (W8XK) U.S.A.
25.23	11,880	10	Paris (Radio Colonial) (FYA) France
25	12,000	20	Moscow (RW59) U.S.S.R.
24.83	12,082	0.5	Lisbon (CTICT) Portugal
24.2	12,396	0.35	Parede (CT1GO) Portugal
23.39	12,830	10	Rabat (Radio Maroc) (CNR) Morocco
22.94	13,075		Suva (VPD) Fiji
19.84	15,123	10	Vatican City (HVJ) Italy
19.82	15,140	10	*Daventry (GSF) Great Britain
19.74	15,200	5	Zeesen (DJB) Germany
19.72	15,210	40	Pittsburgh (W8XK) U.S.A.
19.71	15,220	18	Eindhoven (PCJ) Holland. Experimental
19.68	15,243	10	Paris (Radio Colonial) (FYA) France
19.67	15,250	5	Boston (W1XAL) U.S.A.
19.66	15,260	10	*Daventry (GSI) Great Britain
19.64	15,270	1	Wayne (W2XE) U.S.A.
19.63	15,280	5	Zeesen (DJ2) Germany
19.6	15,300	2	La Paz (CPY) Bolivia
19.56	15,330	20	Schenectady (W2XAD) U.S.A.
19.52	15,370	20	Budapest (HAS3) Hungary
17.33	17,310	20	Bound Brook (W3XL) U.S.A.
16.89	17,760	5	Zeesen (DJE) Germany
16.88	17,770	23	Huizen (PHI) Holland
16.87	17,780	15	Bound Brook (W3XAL) U.S.A.
16.86	17,790	10	*Daventry (GSG) Great Britain
13.97	21,470	10	*Daventry (GSH) Great Britain
13.93	21,530	10	*Daventry (GSJ) Great Britain
13.93	21,540	40	Pittsburgh (W8XK) U.S.A.

\* The Empire Transmitters are occasionally interchanged.



[No. 916] *Published by the British Broadcasting Corporation*  
*Broadcasting House, London, W.1*  
*Printed by J. J. Keliher & Co., Ltd., London, S.E.1*