

PHILCO
Political Radio
ATLAS

1936

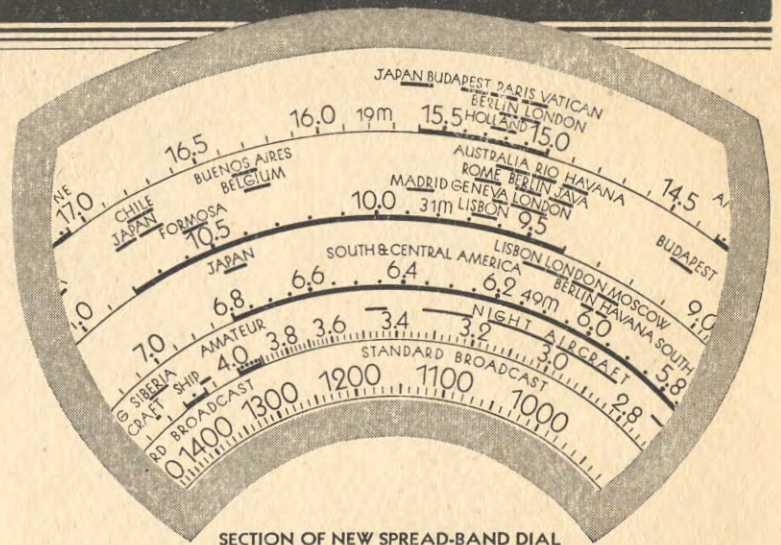


ELECTION EDITION . . . PRICE FIFTY CENTS

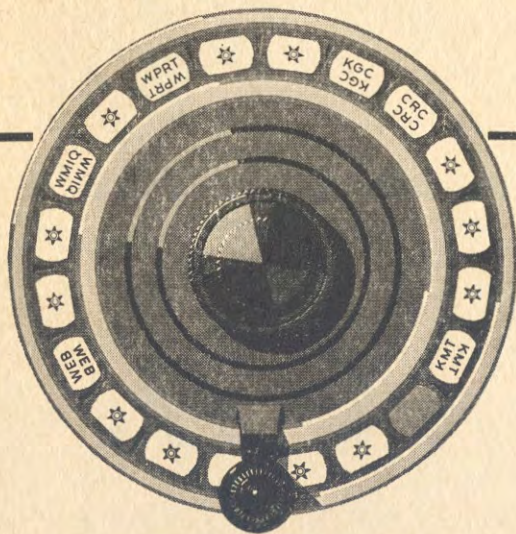
The 1937 Philco 116x De Luxe

New Foreign Tuning System!

Built-in! Automatic! By tuning the aerial as well as the set, the new 1937 Philco *Foreign Tuning System* more than doubles the number of foreign stations you can get and enjoy. This expertly engineered *Foreign Tuning System* is connected by a completely shielded lead-in to the new Philco High-Efficiency Aerial . . . scientifically designed to pick up the faintest signals. Overseas stations are named, located and spread six times farther apart on the Spread-Band Dial . . . the visible symbol of the Philco *Foreign Tuning System*. . . .
"Only Philco has it!"



SECTION OF NEW SPREAD-BAND DIAL ON THE PHILCO 116X DE LUXE SHOWING HOW STATIONS ARE NAMED, LOCATED AND SPREAD SIX TIMES FARTHER APART



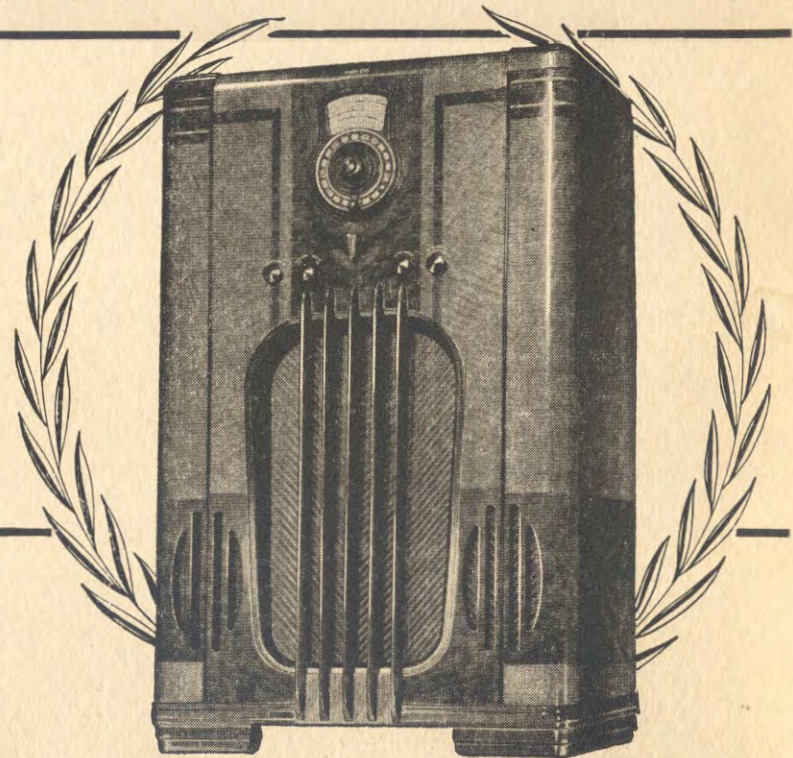
AUTOMATIC TUNING ON THE NEW PHILCO 116X DE LUXE SHOWING HOW CALL-LETTERS APPEAR. PRINTED CALL-LETTERS OF YOUR FAVORITE STATIONS WILL BE INSERTED ON DIAL BY YOUR PHILCO DEALER

New Automatic Tuning!

Forget American station numbers! On the new 116X De Luxe . . . Philco gives you *Automatic Tuning*. Automatically . . . with electrical precision . . . you tune-in favorite American stations more easily than you dial an automatic telephone. You tune by call-letters. With a single twirl of the dial you are listening to the station of your choice. Back of the dial, Philco Magnetic Tuning . . . the development which makes *Automatic Tuning* practical . . . puts you on the exact frequency and holds the receiver there as long as you care to listen.
"Only Philco has it!"

New High-Fidelity!

High-Fidelity means thrilling realism! Tune in a symphony orchestra and every instrument registers its presence. You hear the overtones which distinguish violin from viola and 'cello . . . catch every delicate shading in pianissimo passages . . . thrill to the thunderous finale as if you were in the concert hall! Reproduced so perfectly because Philco Acoustic Clarifiers automatically eliminate barrel-like boom while the Inclined Sounding Board preserves and projects up to ear-level all the extended musical range and clarity of tone of the Philco High-Fidelity Audio System. . . .
"Only Philco has it!"



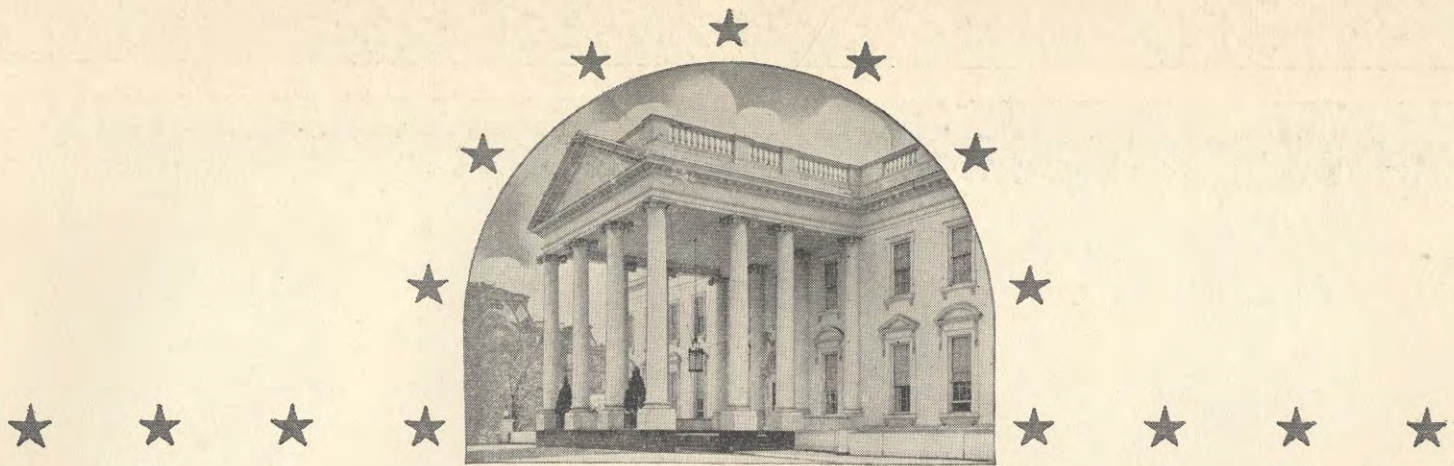
NEW PHILCO 116X DE LUXE

★ ★ ★
 CHOOSE FROM 52 NEW PHILCOS
 \$20 to \$600

PHILCO
A Musical Instrument of Quality

See and hear it at:

WINDHAM ELECTRIC CO.
 73 CHURCH STREET
 WILLIMANTIC, CT.

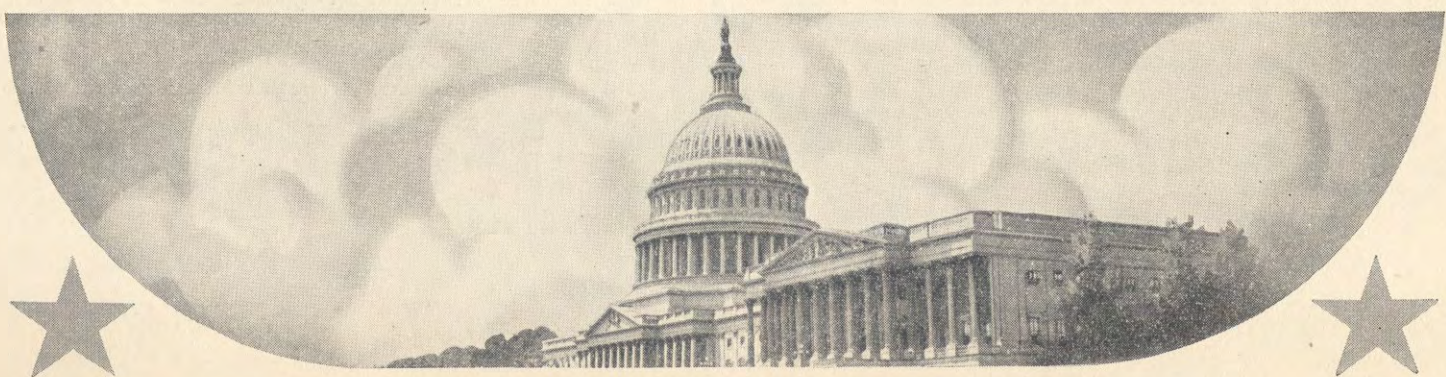


THE political battle is on! And every day it waxes more intense and more exciting. From now right up until election night, millions of radio owners will be enjoying, first hand, the thrills of this historic presidential campaign.

Not in years has there been a more bitterly fought and, therefore, more interesting campaign. Read the platforms of the two major parties and you will realize clearly the controversial issues at stake. Never has there been such a conflict between different schools of thought and policy. Those convinced of the benefits of private industry argue against government regulation. The very Constitution itself comes in for discussion. And in the midst of it all, you radio listeners sit comfortably at home, listening . . . valuating . . . weighing . . . and passing judgment. Upon you, in large part, depends the outcome on November 3.

Every true American makes it his prime duty to vote on election day. But this is not enough. He must know how to vote intelligently. He must be sure that he is casting his vote for that party and those candidates he believes will best serve the nation. Radio, together with the valuable information contained in this non-partisan Philco Political Radio Atlas, will help toward this knowledge.

Without any doubt, the next President of the United States will be elected by radio. With the great wealth of information being made available to you during the next few months, therefore, make sure that you have a radio that is up-to-date . . . that brings the many fine speeches and discussions into your home naturally, clearly, as if the speakers were present in person. Enjoy to the fullest the abundance of enlightening, interesting political programs now on the air by getting a new 1937 Philco. Only with such a radio will you be able to catch every word and understand perfectly the many celebrities who are bidding for your attention.

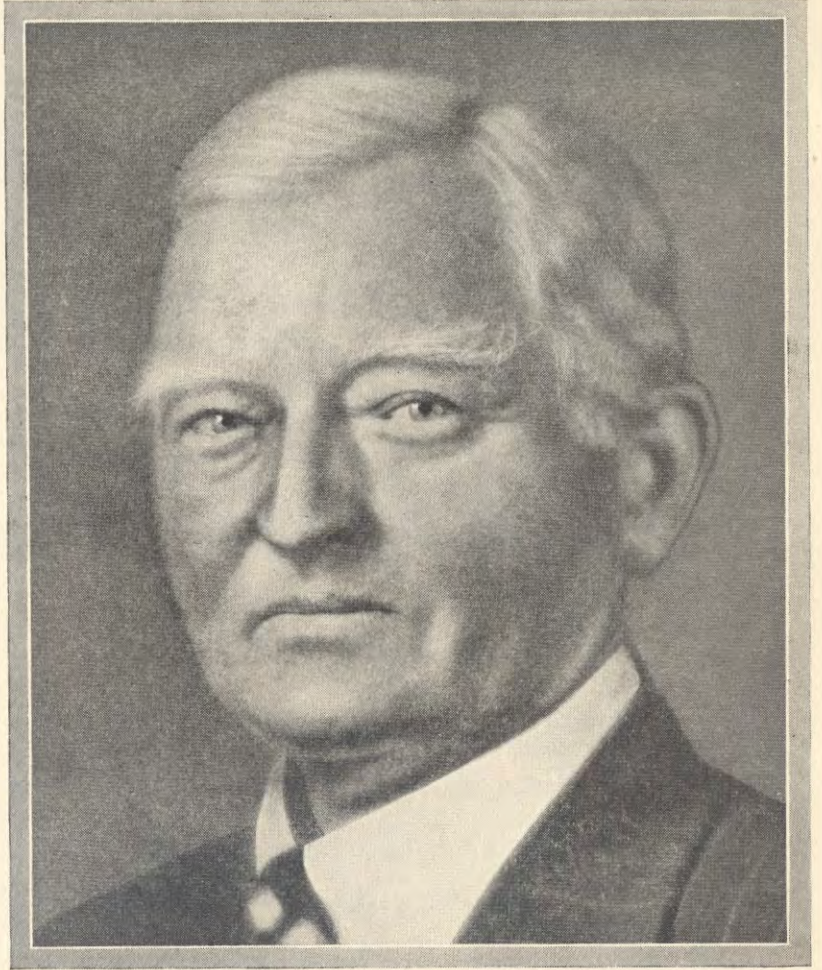


FOR PRESIDENT



FRANKLIN DELANO ROOSEVELT

FOR VICE-PRESIDENT



JOHN NANCE GARNER

THE *Democratic* CANDIDATES

FRANKLIN DELANO ROOSEVELT was born at Hyde Park, N. Y., January 30, 1882. He received his education first at Groton School in Massachusetts and then at Harvard. After a short law practice, he was elected in 1910 State Senator from Dutchess County, the first Democrat in 30 years to hold that seat, and re-elected in 1912.

In 1913 he resigned from the State Senate to accept the post of Assistant Secretary of the Navy under Woodrow Wilson. In 1920 he was named vice-presidential candidate on the ticket with James M. Cox of Ohio. After his defeat he resumed the practice of law and later became vice-president of the Fidelity and Deposit Co. of New York City.

While vacationing at the family summer home at Campobello, New Brunswick, in 1921, President Roosevelt became stricken with infantile paralysis and his life hung in the balance. However, he fought his way back to health. He found the healing waters at Warm Springs, Ga., so beneficial that he established the Warm Springs Foundation to enable sufferers without means to obtain treatment there. He was elected Governor of New York State in 1928 and re-elected in 1930. He was nominated for the Presidency at the 1932 Democratic Convention at Chicago and was elected the following Fall with an overwhelming majority.

JOHN NANCE GARNER is one of America's best examples of a self-made man. Born of pioneer stock at Blossom Prairie in Red River County, Texas, November 22, 1868, he received his early education from an aunt, later going to Vanderbilt University. He studied law in offices at Clarksville, Texas, then went to the cattle country and made his home at Uvalde. Here he engaged in law practice and banking.

His first entry into public life was as county judge. Later he served four years in the Texas legislature and became a staunch fighter in behalf of the Rio Grande district which he represented. He was a delegate to the Democratic conventions of 1900 and 1904 and a delegate-at-large to those of 1916 and 1924. His first appearance in Washington was in 1903 as representative from the 15th Texas District.

Serving on various minor committees, he finally became ranking member of the influential Ways and Means Committee. Here he became an authority on tariff and finance. During the Harding landslide in 1920, he became minority leader. His talents for organization were soon recognized and when the Democrats won control of the House, was elected Speaker in 1931. In 1932 he was elected Vice-President, after 30 continuous years in the House.



FOR PRESIDENT

FOR VICE-PRESIDENT



ALFRED MOSSMAN LANDON



WILLIAM FRANKLIN KNOX

THE *Republican* CANDIDATES

ALFRED MOSSMAN LANDON was born in West Middlesex, Pa., September 9, 1887. While still in early childhood, the Landon family moved to Marietta, Ohio, and from there to Independence, Kansas. In 1908 he was graduated from the University of Kansas Law School and began work in an Independence bank where he obtained his first insight into business and finance — an experience which has served him well in later years.

Having saved up more than \$2,000 during his three years as a book-keeper in the bank, young Landon stepped out to make his way in the oil fields of Kansas and Oklahoma. He was successful.

His entrance into politics came in 1928 as a worker in the gubernatorial campaign of Clyde Reed. Landon was elected governor of Kansas in 1932 in a three-cornered campaign that old-timers said was hopeless. He served two years with such success that he was the only Republican Governor to be re-elected in 1934.

During his two terms in office as Governor of the State of Kansas, Landon built up an enviable reputation by surrounding himself with competent officials, reducing state taxes and putting the state on a pay-as-you-go basis.

COLONEL WILLIAM FRANKLIN KNOX was born in Boston, January 1, 1874. He has been a soldier, business man, political leader and editor.

During the Spanish-American War, he fought with the famed "Rough Riders" and in the World War was in command of an ammunition train. His newspaper career began as a reporter on the Grand Rapids Herald. Later he went to Sault Ste. Marie when the Soo was a booming, lawless country. As newspaper publisher here, he crusaded for law and order. It was here, also that he made his first entrance into politics, putting over the election of Chase Osborn as Governor of Michigan, and later as one of "Teddy" Roosevelt's ardent supporters in the history-making "Bull-Moose" campaign of 1912.

After these successes, Col. Knox went east to Manchester, N. H., where he became co-proprietor of two newspapers there, and then to Boston to take charge of a number of newspapers for a large national publisher. In 1931 he went to Chicago as editor and publisher of the Chicago Daily News. Col. Knox has gained a nation-wide reputation as a crusader fighting for his beliefs and views through the editorial columns of his publications.



The DEMOCRATIC PLATFORM

IN BRIEF

We hold this truth to be self-evident—that government in a modern civilization has certain inescapable obligations to its citizens, among which are:

1. Protection of the family and the home.
2. Establishment of a democracy of opportunity for all the people.
3. Aid to those overtaken by disaster.

These obligations, neglected through 12 years of the old leadership, have once more been recognized by American government. Under the new leadership they will never be neglected.

For the protection of the family and the home:

(1) We have begun and shall continue the successful drive to rid our land of kidnapers and bandits. We shall continue to use the powers of government to end the activities of the malefactors of great wealth who defraud and exploit the people.

(2) We have safeguarded the thrift of our citizens by restraining those who would gamble with other people's savings, by requiring truth in the sale of securities; by putting the brakes upon the use of credit for speculation; by outlawing the manipulation of prices in stock and commodity markets; by curbing the overweening power and unholy practices of utility holding companies; by insuring 50 million bank accounts.

SOCIAL SECURITY

(3) We have built foundations for the security of those who are faced with the hazards of unemployment and old age; for the orphaned, the crippled and the blind. On the foundation of the social security act we are determined to erect a structure of economic security for all our people, making sure that this benefit shall keep step with the ever-increasing capacity of America to provide a high standard of living for all its citizens.

(4) We will act to secure to the consumer fair value, honest sales and a decreased spread between the price he pays and the price the producer receives.

(5) This administration has fostered power rate yardsticks in the Tennessee Valley and in several other parts of the nation. As a result electricity has been made available to the people at a lower rate. We will continue to promote plans for rural electrification and for cheap power by means of the yardstick method.

(6) We maintain that our people are entitled to decent, adequate housing at a price which they can afford. In the last three years the federal government, having saved more than two million homes from foreclosure, has taken the first steps in our history to provide decent housing for people of meager incomes. We believe every encouragement should be given to the building of new homes by private enterprise; and that the government should steadily extend its housing program toward the goal of adequate housing for those forced through economic necessities to live in unhealthy and slum conditions.

(7) We shall continue just treatment of our war veterans and their dependents.

PLEDGE TO FARMERS

For the establishment of a democracy of opportunity.

We have taken the farmers off the road to ruin.

We have kept our pledge to agriculture to use all available means to raise farm income toward its pre-war purchasing power.

The farmer is no longer suffering from 15 cent corn, three cent hogs, two and one-half cent beef at the farm, five cent wool, 30 cent wheat, five cent cotton and three cent sugar.

By federal legislation we have reduced the farmers' indebtedness and doubled his net income. In co-operation with the states and through the farmers' own committees, we are restoring the fertility of his land and checking the erosion of his soil. We are bringing electricity and good roads to his home.

We will continue to improve the soil conservation and domestic allotment program with payments to farmers.

We will continue a fair-minded administration of agricultural laws, quick to recognize and meet new problems and conditions. We recognize the gravity of the evils of farm tenancy, and we pledge the full co-operation of the government in the refinancing of farm indebtedness at the lowest possible rates of interest and over a long term of years.

We favor the production of all the market will absorb, both at home and abroad, plus a reserve supply sufficient to insure fair prices to consumers; we favor judicious commodity loans on seasonal surpluses; and we favor assistance within federal authority to enable farmers to adjust and balance production with demand, at a fair profit to the farmers.

We favor encouragement of sound, practical farm co-operatives.

By the purchase and retirement of 10 million acres of submarginal land and assistance to those attempting to eke out an existence upon it, we have made a good beginning toward proper land use and rural rehabilitation.

The farmer has been returned to the road of freedom and prosperity. We will keep him on that road.

LABOR

We have increased the worker's pay and shortened his hours; we have undertaken to put an end to the sweated labor of his wife and children; we have written into the law of the land his right to collective bargaining and self-organization free from the interference of employers; we have provided federal machinery for the peaceful settlement of labor disputes.

We will continue to protect the worker and we will guard his rights.

The worker has been returned to the road of freedom and prosperity. We will keep him on that road.

We have taken the American business man out of the red. We have saved his bank and given it a sounder foundation; we have extended credit; we have lowered interest rates; we have undertaken to free him from the ravages of cut-throat competition.

Our youth have been returned to the road of freedom and prosperity. We will keep them on that road.

MONOPOLY POWER

We pledge vigorously and fearlessly to enforce the criminal and civil provisions of the existing anti-trust laws, and to the extent that their effectiveness has been weakened by new corporate devices or judicial construction, we propose by law to restore their efficacy in stamping out monopolistic practices and the concentration of economic power.

We have aided and will continue to aid those who have been visited by widespread drought and floods and have adopted a nation-wide flood-control policy.

UNEMPLOYMENT TASK

We believe that unemployment is a national problem, and that it is an inescapable obligation of our government to meet it in a national way. Due to our stimulation of private business, more than 5,000,000 people have been re-employed; and we shall continue to maintain that the first objective of a program of economic security is maximum employment in private industry at adequate wages. Where business fails to supply such employment, we believe that work at prevailing wages should be provided in co-operation with state and local governments on useful public projects, to the end that the national wealth may be increased, the skill and energy of the worker may be utilized, his morale maintained, and the unemployed assured the opportunity to earn the necessities of life.

We know that drought, dust storms, floods, minimum wages, maximum hours, child labor and working conditions in industry, monopolistic and unfair business practices cannot be adequately handled exclusively by 48 separate state legislatures, 48 separate state administrations and 48 separate state courts. Transactions and activities which inevitably overflow state boundaries call for both state and federal treatment.

We have sought and will continue to seek to meet these problems through legislation within the Constitution.

CONSTITUTION STAND

If those problems cannot be effectively solved by legislation within the Constitution, we shall seek such clarifying amendment as will assure to the legislatures of the several states and to the Congress of the United States, each within its proper jurisdiction, the power to enact those laws which the state and federal legislatures, within their respective spheres, shall find necessary, in order adequately to regulate commerce, protect public health and safety and safeguard economic security. Thus we propose to maintain the letter and spirit of the Constitution.

For the protection of government itself and promotion of its efficiency we pledge the immediate extension of the merit system through the classified Civil Service—which was first established and fostered under Democratic auspices—to all non-policy making positions in the federal service.

We shall subject to the Civil Service law all continuing positions which, because of

the emergency, have been exempt from its operation.

CIVIL LIBERTIES

We shall continue to guard the freedom of speech, press, radio, religion and assembly which our Constitution guarantee; with equal rights to all and special privileges to none.

The administration has stopped deflation, restored values and enabled business to go ahead with confidence.

When national income shrinks, government income is imperilled. In reviving national income, we have fortified government finance. We have raised the public credit to a position of unsurpassed security. The interest rate on government bonds has been reduced to the lowest point in 28 years. The same government bonds which in 1932 sold under eighty-three are now selling over 104.

We approve the objective of a permanently sound currency so stabilized as to prevent the former wide fluctuations in value which injured in turn producers, debtors, and property owners on the one hand, and wage earners and creditors on the other, a currency which will permit full utilization of the country's resources. We assert that today we have the soundest currency in the World.

ECONOMY PLANNED

We are determined to reduce the expenses of government. We are being aided therein by the recession of unemployment. As the requirements of relief decline and national income advances, an increasing percentage of federal expenditures can and will be met from current revenues, secured from taxes levied in accordance with ability to pay. Our retrenchment, tax and recovery programs thus reflect our firm determination to achieve a balanced budget and the reduction of the national debt at the earliest possible moment.

In our relationship with other nations, this government will continue to extend the policy of good neighbors. We reaffirm our opposition to war as an instrument of national policy, and declare that disputes between nations should be settled by peaceful means. We shall continue to observe a true neutrality in the disputes of others; to be prepared, resolutely to resist aggression against ourselves; to work for peace and to take the profits out of war; to guard against being drawn, by political commitments, international banking or private trading into any war which may develop anywhere.

We shall continue to foster the increase in our foreign trade which has been achieved by this administration; to seek by mutual agreement the lowering of those tariff barriers, quotas and embargoes which have been raised against our exports of agricultural and industrial products; but continue as in the past to give adequate protection to our farmers and manufacturers against unfair competition or the dumping on our shores of commodities and goods produced abroad by cheap labor or subsidized by foreign governments.

The REPUBLICAN PLATFORM



The following telegram from Governor Landon was read by Mr. John Hamilton to the Republican National Convention before he placed Governor Landon in nomination for President.

This telegram represents the Governor's interpretation of the Platform and contains his pledge with respect to it.

"To the delegates of the Republican National Convention: My name is to be presented for your consideration as a candidate for the nomination for President of the United States.

"The platform recommended by your committee on resolutions and adopted by the convention has been communicated to me.

"I note that according to the terms of that platform 'the acceptance of the nomination tendered by this convention carries with it, as a matter of private honor and public faith, an undertaking by each candidate to be true to the principles and program herein set forth.'

"If nominated I unqualifiedly accept the word and spirit of that undertaking.

"However, with that candor which you and the country are entitled to expect of me, I feel compelled before you proceed with the consideration of my name to submit my interpretations of certain planks in the platform so that you may be advised as to my views. I could not in conscience do otherwise.

"Under the title of labor the platform commits the Republican party as follows: 'Support the adoption of state laws and interstate compacts to abolish sweatshops and child labor, and to protect women and children with respect to maximum hours, minimum wages, and working conditions. We believe that this can be done within the Constitution as it now stands.'

"I hope the opinion of the convention is correct that the aims which you have in mind may be attained within the Constitution as it now stands. But, if that opinion should prove to be erroneous, I want you to know that, if nominated and elected, I shall favor a constitutional amendment permitting the states to adopt such legislation as may be necessary adequately to protect women and children in the matter of maximum hours, minimum wages and working conditions. This obligation we cannot escape.

"The convention advocates 'a sound currency to be preserved at all hazards.' I agree that 'the first requisite to a sound and stable currency is a balanced budget.' The second requisite, as I view it, is a currency expressed in terms of gold and convertible into gold.

"I recognize, however, that the second requisite must not be made effective until and unless it can be done without penalizing our domestic economy and without injury to our producers of agricultural products and other raw materials.

"The convention pledges the party to the merit system and to its restoration, improvement and extension.

"In carrying out this pledge I believe that there should be included within the merit system every position in the administrative service below the rank of assistant secretaries of major departments and agencies, and that this inclusion should cover the entire Post Office Department."

Alfred M. Landon

We pledge ourselves:

1. To maintain the American system of constitutional and local self government,

and to resist all attempts to impair the authority of the Supreme Court.

2. To preserve the American system of free enterprise, private competition, and equality of opportunity, and to seek its constant betterment in the interests of all.

RE-EMPLOYMENT

The only permanent solution of the unemployment problem is the absorption of the unemployed by industry and agriculture. To that end, we advocate:

Removal of restrictions on production.

Abandonment of all New Deal policies that raise production costs, increase the cost of living, and thereby restrict buying, reduce volume and prevent re-employment.

Encouragement instead of hindrance to legitimate business.

Withdrawal of government from competition with private pay rolls.

Elimination of unnecessary and hampering regulations.

Adoption of such other policies as will furnish a chance for individual enterprise, industrial expansion, and the restoration of jobs.

RELIEF

We pledge:

1. The return of responsibility for relief administration to non-political local agencies familiar with community problems.

2. Federal grants-in-aid to the states and territories while the need exists upon compliance with these conditions; (a) A fair proportion of the total relief burden to be provided from the revenues of states and local governments; (b) all engaged in relief administration to be selected on the basis of merit and fitness; (c) adequate provision to be made for the encouragement of those persons who are trying to become self-supporting.

3. Undertaking of federal public works only on their merits and separate from the administration of relief.

4. A prompt determination of the facts concerning relief and unemployment.

SECURITY

We propose a system of old age security, based upon the following principles:

1. We approve a pay-as-you-go policy, which requires of each generation the support of the aged and the determination of what is just and adequate.

2. Every American citizen over 65 should receive the supplementary payment necessary to provide a minimum income sufficient to protect him or her from want.

3. Each state and territory . . . should receive from the federal government a graduated contribution in proportion to its own, up to a fixed maximum.

4. To make this program consistent with sound fiscal policy the federal revenues for this purpose must be provided from the proceeds of a direct tax widely distributed. All will be benefited and all should contribute.

We propose to encourage adoption by the states and territories of honest and practical measures for meeting the problems of unemployment insurance.

LABOR

The welfare of labor rests upon increased production and the prevention of exploitation. We pledge ourselves to:

Protect the right of labor to organize and to bargain collectively through representatives of its own choosing without interference from any source.

Prevent governmental job holders from exercising autocratic powers over labor.

Support the adoption of state laws and interstate compacts to abolish sweatshops and child labor, and to protect women and children with respect to maximum hours, minimum wages and working conditions. We believe that this can be done within the Constitution as it now stands.

AGRICULTURE

We propose:

1. To facilitate economical production and increased consumption on a basis of abundance instead of scarcity.

2. A national land-use program, including the acquisition of abandoned and non-productive farm lands by voluntary sale or lease, subject to approval of the legislative and executive branches of the states concerned, and the devotion of such land to appropriate public use, such as watershed protection and flood prevention, reforestation, recreation, and conservation of wild life.

3. That an agricultural policy be pursued for the protection and restoration of the land resources, designed to bring about such a balance between soil-building and soil-depleting crops as will permanently insure productivity.

4. To extend experimental aid to farmers developing new crops suited to our soil and climate.

5. To promote the industrial use of farm products by applied science.

6. To protect the American farmer against the importation of all live stock, dairy, and agricultural products, substitutes therefore, and derivatives therefrom, which will depress American farm prices.

7. To provide effective quarantine against imported live stock, dairy and other farm products from countries which do not impose health and sanitary regulations fully equal to those required of our own producers.

8. To provide for ample farm credit, at rates as low as those enjoyed by other industries.

9. To provide for decentralized, nonpartisan control of the Farm Credit Administration.

10. To provide in the case of agriculture products of which there are exportable surpluses, the payment of reasonable benefits upon the domestically consumed portion of such crops in order to make the tariff effective.

11. To encourage and further develop cooperative marketing.

12. To furnish government assistance in disposing of surpluses in foreign trade by bargaining for foreign markets selectively by countries both as to exports and imports.

13. To give every reasonable assistance to producers in areas suffering from temporary disaster, so that they may regain and maintain a self-supporting status.

TARIFF

We will repeal the present reciprocal trade agreement law. Its continuation would work to the detriment of the wage earner and the farmer.

We will restore the principle of the flexible tariff in order to meet changing economic conditions here and abroad.

We will adjust tariffs with a view to promoting international trade.

We condemn the secret negotiation of reciprocal trade treaties without public hearing or legislative approval.

MONOPOLIES

We favor the vigorous enforcement of the criminal laws, as well as the civil laws, against monopolies and trusts and their officials, and we demand the enactment of such additional legislation as is necessary to make it impossible for the private monopoly to exist in the United States.

We will employ the full powers of the government to the end that monopoly shall be eliminated and that free enterprises shall be fully restored and maintained.

BUSINESS REGULATION

We recognize existence of a field within which governmental regulation is desirable and salutary. The authority to regulate should be vested in an independent tribunal acting under clear and specific laws establishing definite standards. Their determinations on law and facts should be subject to review by the courts. We favor federal regulation, within the Constitution, of the marketing of securities to protect investors. We favor also federal regulation of the interstate activities of public utilities.

CIVIL SERVICE

We pledge ourselves to the merit system. It should be restored, improved and extended.

We will provide such conditions as offer an attractive permanent career in government service to young men and women of ability, irrespective of party affiliations.

GOVERNMENT FINANCE

We pledge ourselves to:

Stop the folly of uncontrolled spending. Balance the budget—not by increasing taxes but by cutting expenditures, drastically and immediately.

Revise the federal tax system and coordinate it with state and local tax systems.

Use the taxing power for raising revenue and not for punitive or political purposes.

MONEY AND BANKING

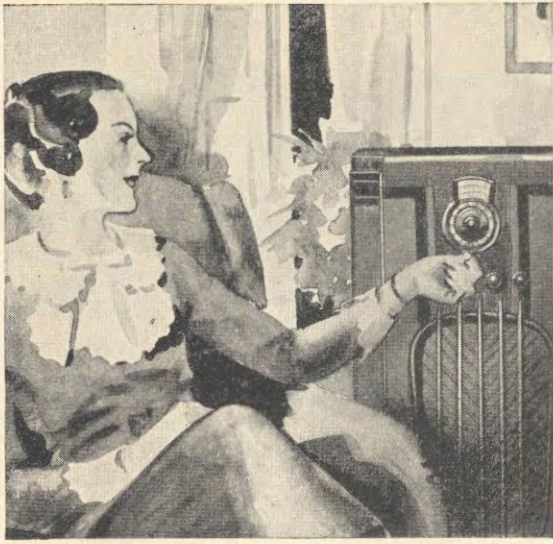
We advocate a sound currency to be preserved at all hazards.

The first requisite to a sound and stable currency is a balanced budget.

We oppose further devaluation of the dollar.

We will restore to the Congress the authority lodged with it by the Constitution to coin money and regulate the value thereof by repealing all the laws delegating this authority to the Executive.

We will co-operate with other countries toward stabilization of currencies as soon as we can do so, with due regard for our national interests and as soon as other nations have sufficient stability to justify such action. (Continued on Page 11)



Radio Increases Interest in Politics

AMERICA is a nation of home-lovers and it is natural therefore, that radio has taken such a hold upon our lives. Because of radio, we are able to lounge comfortably in our easy chairs and have the world's greatest artists entertain us while world-famous speakers and international celebrities speak to us as if face to face. Radio entertains us, educates us, keeps us informed about the affairs of our country and the world.

It is this ability of the radio to entertain, educate and inform us within the living rooms of our own homes, that has done more than anything else to make us politically conscious and intelligent. Millions of people who never attended a political meeting or took the slightest interest in politics have listened to political talks through radio, been intelligently informed concerning the issues at stake, and been able to vote intelligently.

Some idea of the tremendous influence radio has been in crystallizing public opinion is found in the popular vote before and since the advent of radio. During the period from 1900 to 1920, the popular vote increased approximately 13,000,000 while the population increased 30,000,000. However, from 1920 to 1932 (the last Presidential election) the popular vote increased another 13,000,000 while the population increased 17,000,000.

There are two facts of particular interest in these figures: First, since the advent of radio, the popular vote increased as much in 12 years as in the entire previous 20 years. Second, a comparison between the two periods, before and after radio came into being, shows that the rate of increase in popular vote from 1920 to 1932 was approximately double that from 1900 to 1920. This is striking proof of how radio has increased the political consciousness of the American people.

More people will hear the campaign speeches this year than ever before. It is to be expected, therefore, that 1936 will break all records in the popular vote rolled up on November 3.



WHO CAN VOTE

ACCORDING to our Constitution, a person must be a citizen of the United States, and 21 years of age in order to vote. A citizen can lose his right to vote, however, through the commission of a felony and other offenses against the laws of the United States.

A citizen is defined in the Fourteenth Amendment to the Constitution as a person born or naturalized in the United States and subject to the jurisdiction thereof and further declares that such a person is not only a citizen of the United States but also of the particular state in which he resides. In this Amendment it is also stipulated that no State shall enact or enforce any law that abridges the privileges or immunities of citizens of the United States.

The Fifteenth Amendment, adopted March 30, 1870, insures the freedom of any citizen to vote by declaring that the right to vote shall not be denied or abridged by the United States or any state because of age, color or previous condition of servitude. In 1920, the right to vote was extended to both men and women.

STATUS OF ALIENS

An alien must have resided in the United States for at least five years to become eligible for citizenship. He must then make a declaration of intent with the field naturalization office in the territory in which he resides at least two years before he is eligible. If the field naturalization office finds he has entered the United States legally and is otherwise considered eligible, he receives his first papers. Then, after the expiration of at least two more years, providing he has resided in the country for five years or more, he may petition the Federal Court for admission to citizenship. He must bring with him two citizens who will testify as to his moral character. If his petition is acted upon

favorably, he must give up all allegiance to the country of which he was formerly subject and take the oath of allegiance to the United States. He then receives his certificate of citizenship and has all the rights and privileges of a native born American except that of becoming President or Vice-President of the United States. Naturalization is granted only to white persons or to those of African nativity or descent.

ABSENTEE BALLOTS

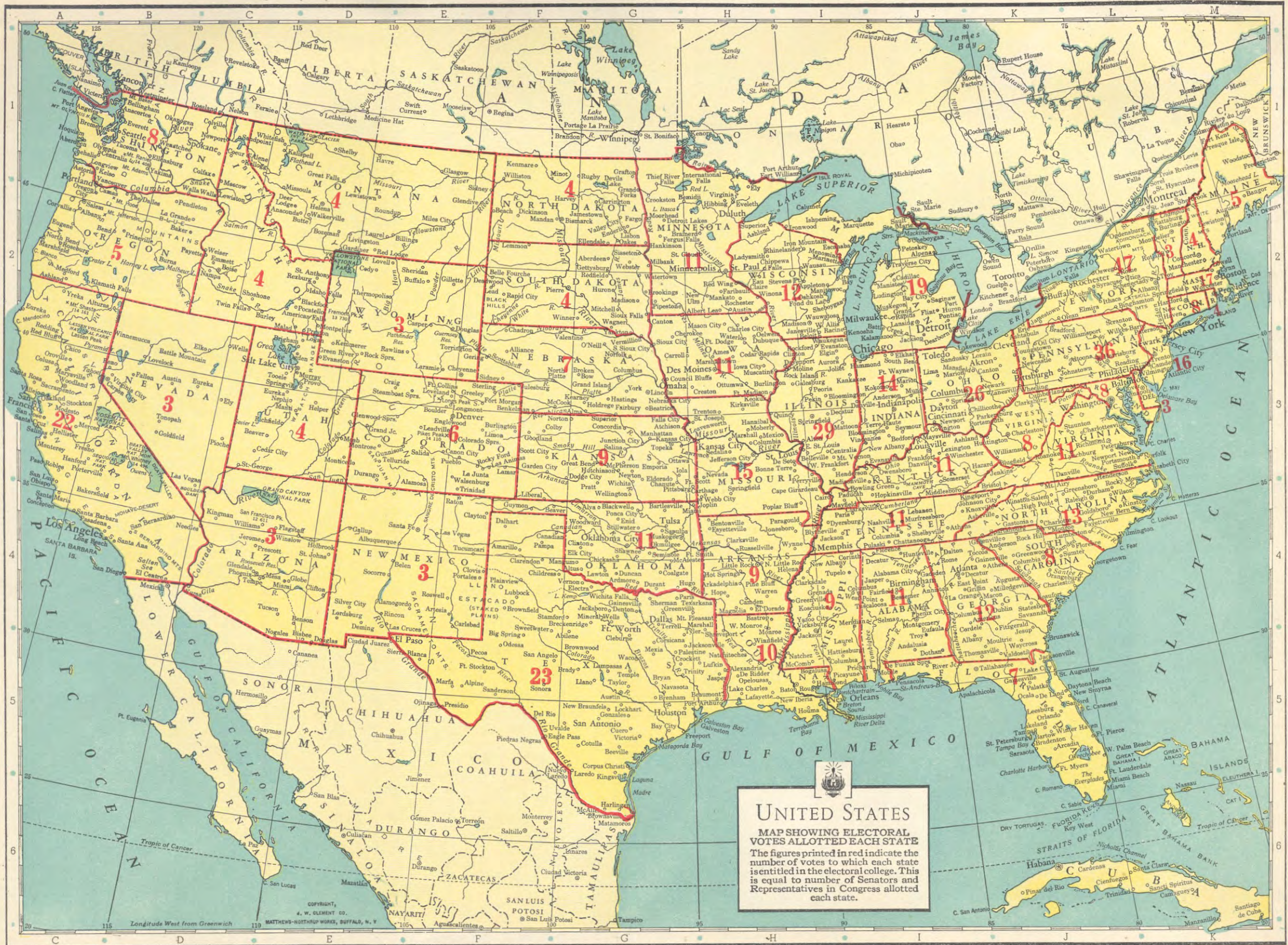
To those persons expecting to be absent from their home county on election day, most states permit absentee voting. Into this class of voters fall railroad employees, commercial travelers, actors, and people engaged in similar occupations. These people have only to apply for registration to their local board of elections between June 1 and September 10 in order to receive a set of absentee voter's ballots which entitle them to cast their votes. Such registration may also be made during the regular registration period in October. The only stipulation is that the voter be within the United States on election day.

NEW VOTERS

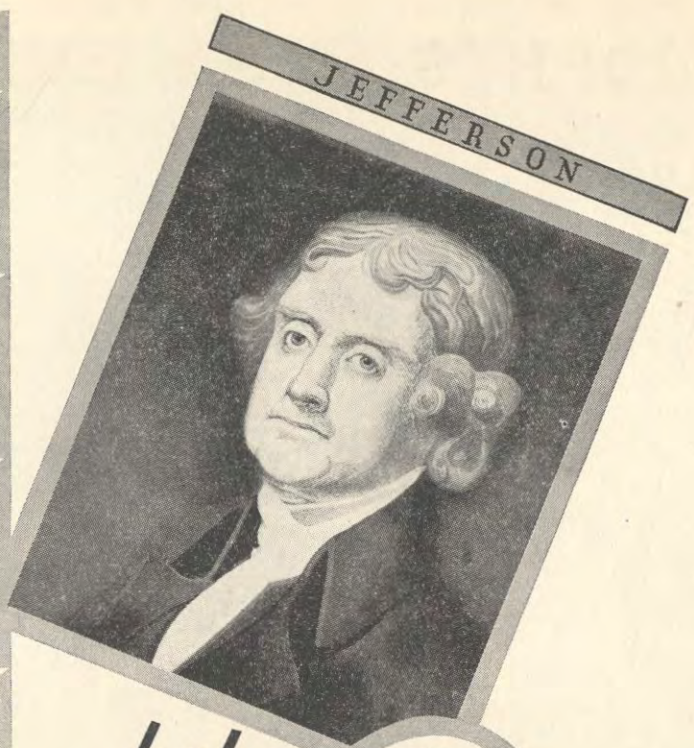
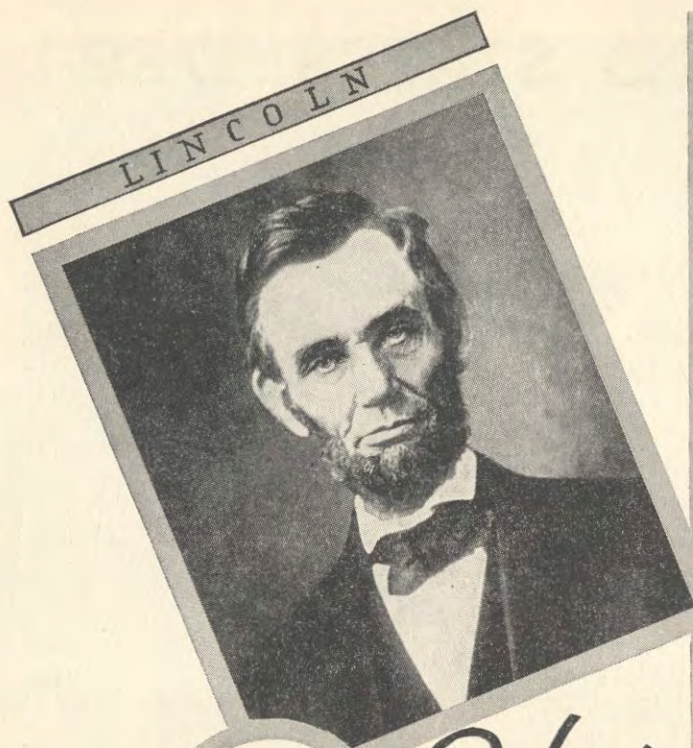
Proof of literacy is required in most states before a new voter is allowed to exercise the right of franchise. Various states have different requirements to which the new voter must conform before a certificate of literacy is issued. In general, however, the new voter must be able to speak English, to sign his name in his own handwriting and to be able to meet the educational standards of his own state. The questions asked him by the Naturalization Court necessitate that he have an understanding of the English language, knowledge of the Constitution, and an acquaintance with our form of government and the election of public officials.

RESIDENCE REQUIREMENTS

STATE	Residence in			STATE	Residence in		
	State	County	Voting Precinct		State	County	Voting Precinct
Alabama.....	2 yrs.	1 yr.	3 mos.	Nebraska.....	6 mos.	40 days	10 days
Arizona.....	1 yr.	30 days	30 days	Nevada.....	6 mos.	30 days	10 days
Arkansas.....	1 yr.	6 mos.	30 days	New Hampshire.....	6 mos.	6 mos.
California.....	1 yr.	90 days	40 days	New Jersey.....	1 yr.	5 mos.
Colorado.....	1 yr.	90 days	10 days	New Mexico.....	12 mos.	90 days	30 days
Connecticut.....	1 yr.	6 mos.	New York.....	1 yr.	4 mos.	30 days
Delaware.....	1 yr.	3 mos.	30 days	North Carolina.....	1 yr.	4 mos.
Florida.....	1 yr.	6 mos.	30 days	North Dakota.....	1 yr.	90 days	30 days
Georgia.....	1 yr.	6 mos.	Ohio.....	1 yr.	30 days	5 days
Idaho.....	6 mos.	30 days	Oklahoma.....	1 yr.	6 mos.	30 days
Illinois.....	1 yr.	90 days	30 days	Oregon.....	6 mos.
Indiana.....	6 mos.	60 days	30 days	Pennsylvania.....	1 yr.	2 mos.	2 mos.
Iowa.....	6 mos.	60 days	10 days	Rhode Island.....	2 yrs.	6 mos.
Kansas.....	6 mos.	30 days	30 days	South Carolina.....	2 yrs.	1 yr.	4 mos.
Kentucky.....	1 yr.	6 mos.	60 days	South Dakota.....	1 yr.	90 days	30 days
Louisiana.....	2 yrs.	1 yr.	3 mos.	Tennessee.....	1 yr.	6 mos.
Maine.....	3 mos.	Texas.....	1 yr.	6 mos.	6 mos.
Maryland.....	1 yr.	6 mos.	1 day	Utah.....	1 yr.	4 mos.	60 days
Massachusetts.....	1 yr.	6 days	6 mos.	Vermont.....	1 yr.	3 mos.	3 mos.
Michigan.....	6 mos.	20 days	20 days	Virginia.....	1 yr.	6 mos.	30 days
Minnesota.....	6 mos.	10 days	Washington.....	1 yr.	30 days	10 days
Mississippi.....	2 yrs.	1 yr.	1 yr.	West Virginia.....	1 yr.	60 days
Missouri.....	1 yr.	60 days	60 days	Wisconsin.....	1 yr.	10 days	10 days
Montana.....	1 yr.	6 mos.	Wyoming.....	1 yr.	60 days	10 days



UNITED STATES
 MAP SHOWING ELECTORAL VOTES ALLOTTED EACH STATE
 The figures printed in red indicate the number of votes to which each state is entitled in the electoral college. This is equal to number of Senators and Representatives in Congress allotted each state.



History of the MAJOR PARTIES



Republican

THE Republican Party of today is the younger of the two major political schools of thought. It was formed after the dissolution of the Whig Party, at a meeting of Whigs, Free Soilers and discontented Democrats at Ripon, Wisconsin, in 1854. It had for its aim opposition to the extension of slavery and the assertion of national supremacy as against the states' rights tendencies of the Democratic Party.

After the Compromise Measures of 1850, the Whig Party rapidly disintegrated, the Southern Whigs going over to the Democratic Party and the Northern Whigs affiliating with what were known as the Free Soilers and the Know Nothings. The Whig members in Congress repudiated the party name upon passage of the Kansas-Nebraska Bill in 1854 and for a time were known as the Anti-Nebraska men. The name Republican Party originated with a group of Anti-Nebraska men in Congress in 1854 and this name was officially adopted by a state convention meeting in Jackson, Mich., in the same year and soon came into general use.

The new party spread rapidly, especially in the West and a national organization was effected on February 22, 1856. A national convention which met in June, 1856, adopted a platform opposing slavery and declaring that Congress was sovereign over the territories and should prohibit slavery therein. Its candidate for the presidency, John C. Fremont, was defeated in the election but the party succeeded in electing most of its candidates for Congress in the Northern states. In the 1860 campaign the party succeeded in electing Abraham Lincoln as its first president, owing to a split in the Democratic Party.

The Republican Party has consistently taken a stand against states' rights, holding that the national government was supreme and state governments subservient to it. It was the organization most effective in crystallizing sentiment against slavery and opposing its extension. It early declared itself in favor of a Pacific railroad and a program of river and harbor improvement. The Party has always favored a high protective tariff and has as early as 1896 definitely opposed monetary inflation as a means of alleviating economic distress.

Democratic

THE germ of the Democratic Party originated in the Anti-Federalists who opposed the adoption of a Federal Constitution. A moderate party, led by Jefferson and Madison, recognized the need for a stronger central government than the Articles of Confederation afforded but viewed with alarm the centralization tendency manifested by Hamilton and the Federalist Party. To this moderate party was given the name of Republican about 1792.

During the French revolution, extreme sympathizers with the new French Republic formed so-called "democratic clubs." These clubs advocated equalitarianism and extreme liberty for the individual. Though not in complete accord with the Republicans, adherents of these views were forced to act in harmony with them in opposition to Federalist measures and were eventually absorbed by the Republicans which came to be known as the Democratic-Republican Party or simply as the Democratic Party.

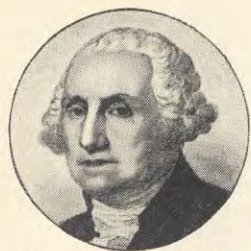
In 1798, the fundamental Democratic principles were clearly formulated by Jefferson and Madison in the Kentucky and Virginia Resolutions. The state governments were declared to be the basis of our system and the Federal government had only those powers which were conferred upon it by the Constitution.

The Democratic Party has always advocated the widest extension of suffrage and the highest degree of popular control of the government. It has always been traditionally opposed to a protective tariff and extensive military and naval establishments. In its early days, the Party was opposed to the establishment of the National bank, to internal improvements and to indirect taxation.

Because of its tendency toward equalitarianism, the Democratic Party was forced to adopt at least a passive tolerance toward slavery inasmuch as a large part of its strength lay in the slave states. For a similar reason, it opposed extension of suffrage to the blacks in 1868.

In 1896 and again in 1900, political exigencies induced the Party to embrace the advocacy of the free coinage of silver. In spite of these discrepancies in party policy, however, there has always been a tendency to return to fundamental party principles after a brief trial of newer issues.

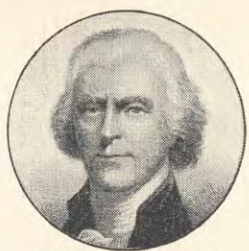
PRESIDENTS of the UNITED STATES, 1789-1936



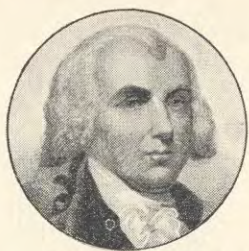
GEORGE WASHINGTON
President.....1789 to 1797



JOHN ADAMS
President.....1797 to 1801



THOMAS JEFFERSON
President.....1801 to 1809



JAMES MADISON
President.....1809 to 1817



JAMES MONROE
President.....1817 to 1825



JOHN QUINCY ADAMS
President.....1825 to 1829



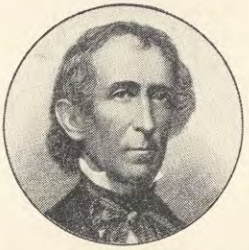
ANDREW JACKSON
President.....1829 to 1837



MARTIN VAN BUREN
President.....1837 to 1841



WILLIAM H. HARRISON
President.....1841 to 1841



JOHN TYLER
President.....1841 to 1845



JAMES KNOX POLK
President.....1845 to 1849



ZACHARY TAYLOR
President.....1849 to 1850



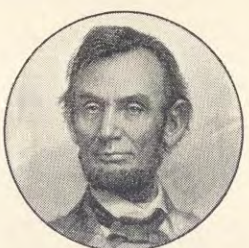
MILLARD FILLMORE
President.....1850 to 1853



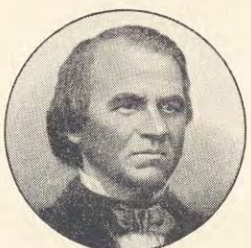
FRANKLIN PIERCE
President.....1853 to 1857



JAMES BUCHANAN
President.....1857 to 1861



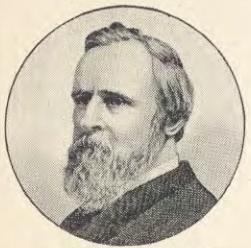
ABRAHAM LINCOLN
President.....1861 to 1865



ANDREW JOHNSON
President.....1865 to 1869



ULYSSES S. GRANT
President.....1869 to 1877



RUTHERFORD B. HAYES
President.....1877 to 1881



JAMES A. GARFIELD
President.....1881 to 1885



CHESTER A. ARTHUR
President.....1881 to 1885



GROVER CLEVELAND
President.....1885 to 1889
.....1893 to 1897



BENJAMIN HARRISON
President.....1889 to 1893



WILLIAM MCKINLEY
President.....1897 to 1901



THEODORE ROOSEVELT
President.....1901 to 1909



WILLIAM HOWARD TAFT
President.....1909 to 1913



WOODROW WILSON
President.....1913 to 1921



WARREN G. HARDING
President.....1921 to 1923



CALVIN COOLIDGE
President.....1923 to 1929



HERBERT C. HOOVER
President.....1929 to 1933



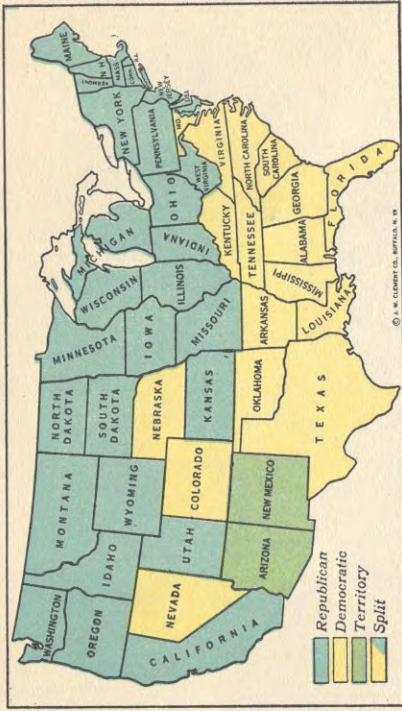
FRANKLIN D. ROOSEVELT
President.....1933 to —



?????
President.....1937 to —

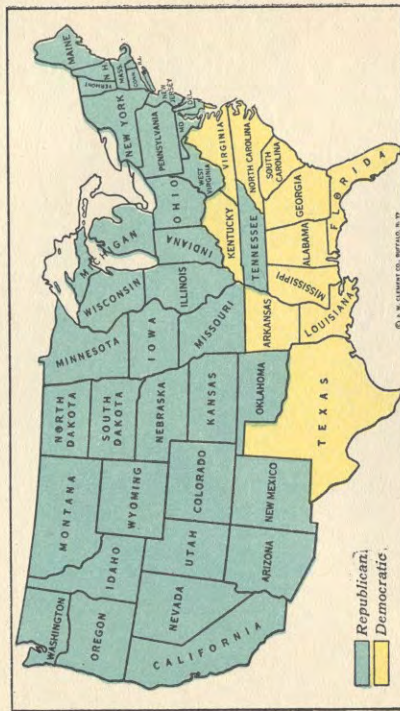


POPULAR and ELECTORAL VOTE-1900 to 1932



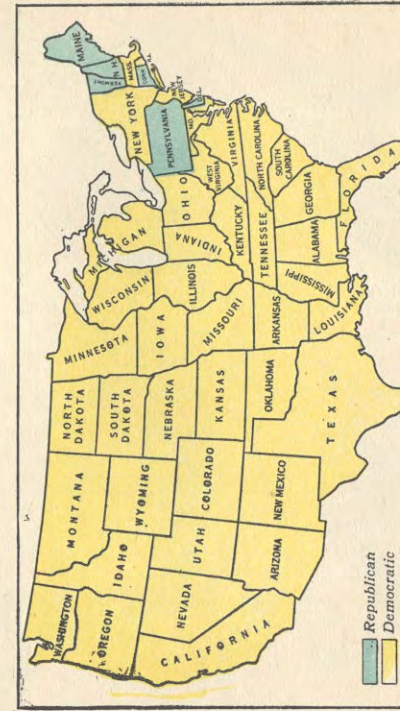
PRESIDENTIAL ELECTION—1900
 Republican: William McKinley, Ohio, 28 States—292 Electoral Votes
 Democratic: William J. Bryan, Neb., 17 States—155 Electoral Votes

Popular Vote: {
 Republican 7,219,530
 Democratic 6,358,071
 Prohibition 209,166
 Socialist 94,768
 Total 13,964,518



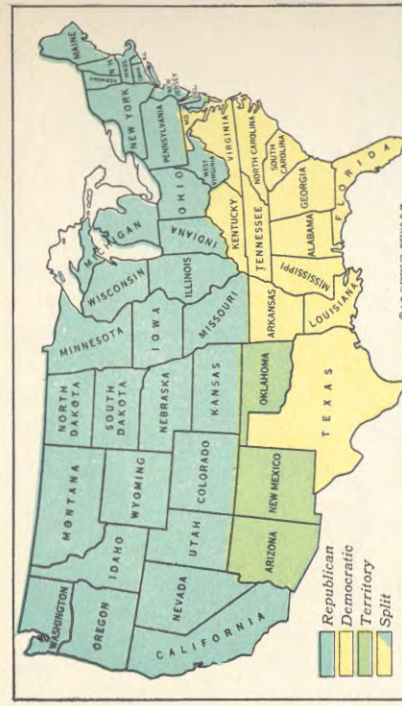
PRESIDENTIAL ELECTION—1904
 Republican: Theodore Roosevelt, N. Y., 32 States—336 Electoral Votes
 Democratic: Alton B. Parker, N. Y., 13 States—140 Electoral Votes

Popular Vote: {
 Republican 7,628,834
 Democratic 5,084,491
 Socialist-Labor 33,784
 Prohibition 259,257
 Total 13,523,519



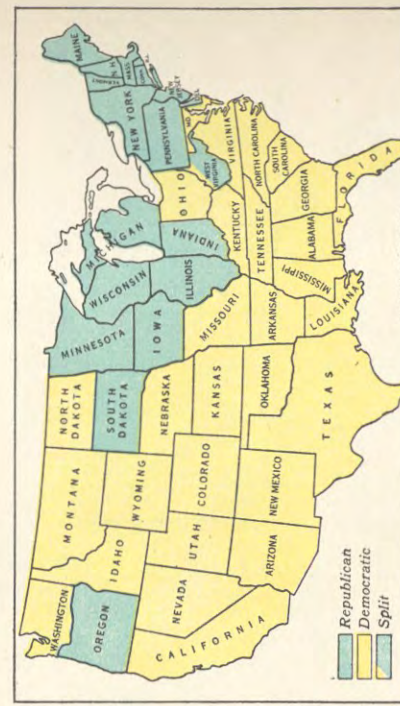
PRESIDENTIAL ELECTION—1908
 Republican: William H. Taft, Ohio, 29 States—321 Electoral Votes
 Democratic: William J. Bryan, Neb., 17 States—162 Electoral Votes

Popular Vote: {
 Republican 7,679,006
 Democratic 6,409,106
 Socialist 420,820
 Socialist-Labor 252,683
 Prohibition 14,887,133
 Total 14,887,133



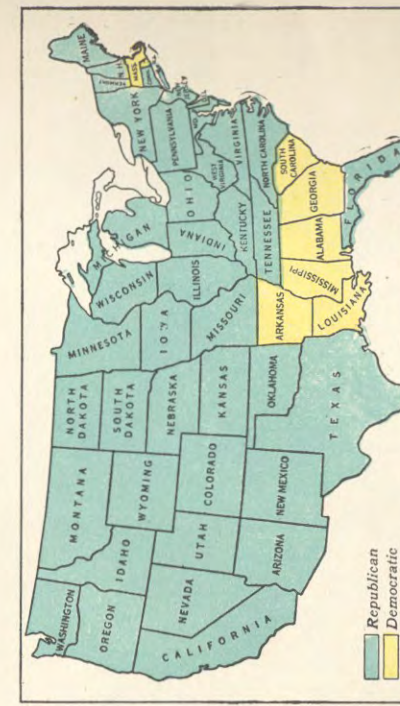
PRESIDENTIAL ELECTION—1912
 Democratic: Woodrow Wilson, N. J., 40 States—435 Electoral Votes
 Progressive: Theodore Roosevelt, N. Y., 6 States—88 Electoral Votes
 Republican: William H. Taft, Ohio, 2 States—8 Electoral Votes

Popular Vote: {
 Democratic 6,286,214
 Progressive 4,126,029
 Republican 3,483,922
 Socialist 897,011
 Total 15,031,169



PRESIDENTIAL ELECTION—1916
 Democratic: Woodrow Wilson, N. J., 39 States—277 Electoral Votes
 Republican: Charles Evans Hughes, N. Y., 18 States—254 Electoral Votes

Popular Vote: {
 Democratic 9,129,606
 Progressive 41,894
 Socialist-Labor 13,403
 Socialist 585,113
 Prohibition 220,506
 Total 528,743



PRESIDENTIAL ELECTION—1920
 Republican: Warren G. Harding, Ohio, 37 States—404 Electoral Votes
 Democratic: James M. Cox, Ohio, 11 States—127 Electoral Votes

Popular Vote: {
 Republican 16,152,200
 Democratic 9,147,353
 Socialist 919,799
 Prohibition 26,674,171
 Total 26,674,171



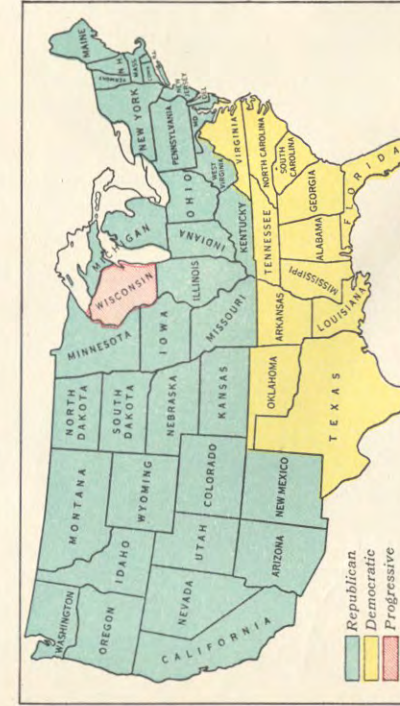
PRESIDENTIAL ELECTION—1924
 Republican: Calvin Coolidge, Mass., 35 States—282 Electoral Votes
 Democratic: John W. Davis, W. Va., 12 States—136 Electoral Votes
 Independent Progressive: R. M. La Follette, Wis., 1 State—13 Electoral Votes

Popular Vote: {
 Republican 15,725,016
 Democratic 8,385,586
 Socialist-Labor 38,958
 Combined Farm-Labor Socialist, Farm-Labor, etc., 4,822,856
 Total 29,062,066



PRESIDENTIAL ELECTION—1928
 Republican: Herbert Hoover, Calif., 40 States—444 Electoral Votes
 Democratic: Alfred E. Smith, N. Y., 8 States—87 Electoral Votes

Popular Vote: {
 Republican 21,392,190
 Democratic 15,016,443
 Socialist-Labor 20,106
 Prohibition 267,420
 Scattering 74,341
 Workers 48,770
 Total 36,840,873



PRESIDENTIAL ELECTION—1932
 Republican: Franklin D. Roosevelt, N. Y., 42 States—472 Electoral Votes
 Democratic: Herbert Hoover, Calif., 6 States—59 Electoral Votes

Popular Vote: {
 Republican 15,759,266
 Democratic 22,813,786
 Socialist 881,951
 Farmer-Labor and Scattering 102,785
 Prohibition 77,528
 Total 39,734,551

HOW the PRESIDENT is ELECTED

WHEN you have made up your mind as to the man and party of your choice . . . your ballot is not cast directly for that candidate on Election Day. Instead you vote for a list of Presidential Electors, varying in number from three in Wyoming and others of the less-populated states to 47 in New York State. Each state has as many Presidential Electors as it is entitled to have Senators and Representatives in the National Congress . . . and as each state must have two Senators and at least one Representative in Congress this automatically establishes the minimum of Electors per state at three.

On the first Monday after the second Wednesday in December following the election, the Presidential Electors meet in their respective states at such place as the State Legislature may designate, and vote by ballot for President and Vice-President, "one of whom at least shall not be an inhabitant of the same state with themselves." On the sixth day of January in Washington, the President of the Senate, in the presence of the Senate and House of Representatives, opens the certificates forwarded by the several states and votes are then counted. The person having the greatest number of votes is proclaimed President, if his votes are a majority of the whole number of Electors.

If no candidate for President receives a majority (266 votes), the House of Representatives immediately proceeds to choose a President from among the three with the greatest number of Electoral votes. In such an election, the vote is by states, each state entitled to one vote.

The election of the Vice-President is decided in the same manner, save that in case no candidate for that office receives a majority of the Electoral votes, the Senate chooses a Vice-President from the two candidates who received the highest number of Electoral votes. Each Senator is entitled to one vote in such an election.

The present President's term was automatically shortened by the adoption of the 20th Amendment to the Constitution. In accordance with this Amendment, Inauguration Day is moved forward to January 20th and the next President will take the oath of office on that day instead of March 4th.

Article II of the Constitution of the United States sets forth the qualifications of the President and certain regulations concerning his office as follows:



"No Person except a natural born Citizen, or a Citizen of the United States, at the time of the Adoption of this Constitution, shall be eligible to the Office of President; neither shall any Person be eligible to that Office who shall not have attained to the Age of thirty-five Years, and been fourteen Years a Resident within the United States.

"In Case of the Removal of the President from Office, or of his Death, Resignation, or Inability to discharge the Powers and Duties of the said Office, the same shall devolve on the Vice-President, and the Congress may by Law provide for the Case of Removal, Death, Resignation or Inability, both of the President and Vice-President, declaring what Officer shall then act as President, and such Officer shall act accordingly, until the Disability be removed, or a President shall be elected.

"The President shall, at stated Times, receive for his services a Compensation, which shall neither be increased nor diminished during the Period for which he shall have been elected, and he shall not receive within that Period any other Emolument from the United States, or any of them.

"Before he enter on the Execution of his Office he shall take the following Oath or Affirmation:—'I do solemnly swear (or affirm) that I will faithfully execute the Office of President of the United States, and will to the best of my Ability, preserve, protect and defend the Constitution of the United States.'"

THE REPUBLICAN PLATFORM IN BRIEF

(Continued from Page 5)

FOREIGN AFFAIRS

We pledge ourselves to promote and maintain peace by all honorable means not leading to foreign alliances or political commitments.

Obedient to the traditional foreign policy of America and to the repeatedly expressed will of the American people, we pledge that America shall not become a member of the League of Nations nor of the World Court nor shall America take on any entangling alliances in foreign affairs.

We shall promote, as the best means of securing and maintaining peace by the pacific settlement of disputes, the great cause of international arbitration through the es-

tablishment of free, independent tribunals, which shall determine such disputes in accordance with law, equity and justice.

NATIONAL DEFENSE

We favor an Army and Navy, including air forces, adequate for our national defense.

We shall co-operate with other nations in the limitation of armaments and control of traffic in arms.

BILL OF RIGHTS

We pledge ourselves to preserve, protect and defend, against all intimidation and threat, freedom of religion, speech, press and

radio; and the right of assembly and petition and immunity from unreasonable searches and seizures.

We offer the abiding security of a government of laws as against the autocratic perils of a government of men.

Furthermore:

1. We favor the construction by the federal government of headwater storage basins to prevent floods, subject to the approval of the legislative and executive branches of the government of the states whose lands are concerned.

2. We favor equal opportunity for our Colored citizens. We pledge our protection of their economic status and personal safety. We will do our best to further their employment in the gainfully occupied life

of America, particularly in private industry, agriculture, emergency agencies and the civil service.

3. To our Indian population we pledge every effort on the part of the national government to ameliorate living conditions for them.

4. We pledge continuation of the Republican policy of adequate compensation and care for veterans disabled in the service of our country and for their widows, orphans and dependents.

5. We shall use every effort to collect the war debt due us from foreign countries amounting to \$12,000,000,000 — one-third of our national debt.

6. We are opposed to legislation which discriminates against women in federal and state employment.

NORTH AMERICAN LONG-WAVE STATIONS

The numbers in large type in the table below correspond to the dial settings on your Philco radio. Thus, this list is an accurate guide to you in your broadcast journeys. The small zeros after these figures convert these dial settings into kilocycles, the form in which stations are most often listed by newspapers.

With this log, you can identify any station almost instantly by its dial setting, its power and the network with which it is affiliated. It also facilitates your tuning to any city you desire inasmuch as stations are grouped geographically, according to the part of the country in which they are located.

Revision 50		*Columbia; †NBC Red; ‡NBC Blue; §NBC Red & Blue; ¶Mutual		WATTS POWER		2500 5000 10000 15000 25000 50000 100,000 250,000 500,000		F G H I J K L M N O P Q R S T U V W X Y Z	
WESTERN		MIDDLE WESTERN		CENTRAL		EASTERN		WESTERN	
Wash., Ore., Cal., Utah, Etc.	Minn., Ia., Neb., Mo., Tex., Etc.	Ill., Mich., Ohio, Tenn., Etc.	Mass., N. Y., Pa., N. C., Etc.	Ill., Mich., Ohio, Tenn., Etc.	Mass., N. Y., Pa., N. C., Etc.	Ill., Mich., Ohio, Tenn., Etc.	Mass., N. Y., Pa., N. C., Etc.	Ill., Mich., Ohio, Tenn., Etc.	Mass., N. Y., Pa., N. C., Etc.
CJRM Moose Jaw, Sask.	KSD-KFUO St. Louis, Mo.	*WKRC Cincinnati, Ohio.	*WGR Buffalo, N. Y.	*WKRC Cincinnati, Ohio.	*WGR Buffalo, N. Y.	*WKRC Cincinnati, Ohio.	*WGR Buffalo, N. Y.	*WKRC Cincinnati, Ohio.	*WGR Buffalo, N. Y.
KOAC Corvallis, Ore.	KTSO San Antonio, Tex.	WSVA Staunton Va.	WDEF Waterbury Vt.	WSVA Staunton Va.	WDEF Waterbury Vt.	WSVA Staunton Va.	WDEF Waterbury Vt.	WSVA Staunton Va.	WDEF Waterbury Vt.
KLZ Denver, Colo.	KWYO Springfield, Mo.	WIND Chicago-Gary.	WFIL Philadelphia, Pa.	WIND Chicago-Gary.	WFIL Philadelphia, Pa.	WIND Chicago-Gary.	WFIL Philadelphia, Pa.	WIND Chicago-Gary.	WFIL Philadelphia, Pa.
KSFQ San Francisco, Cal.	KFDM Beaumont, Tex.	*WNSN Youngstown, Ohio.	*WNCN Asheville, N. C.	*WNSN Youngstown, Ohio.	*WNCN Asheville, N. C.	*WNSN Youngstown, Ohio.	*WNCN Asheville, N. C.	*WNSN Youngstown, Ohio.	*WNCN Asheville, N. C.
*KVI Tacoma, Wash.	*WNAX Yankton, S. D.	WOSU Columbus, Ohio.	WMCANew York (WSYR)	WOSU Columbus, Ohio.	WMCANew York (WSYR)	WOSU Columbus, Ohio.	WMCANew York (WSYR)	WOSU Columbus, Ohio.	WMCANew York (WSYR)
KMTR Los Angeles, Cal.	*KGO Wichita Falls, Tex.	*WDBO Orlando, Fla.	*WTAG Worcester, Mass.	*KGO Wichita Falls, Tex.	*WTAG Worcester, Mass.	*KGO Wichita Falls, Tex.	*WTAG Worcester, Mass.	*KGO Wichita Falls, Tex.	*WTAG Worcester, Mass.
*KHO Spokane, Wash.	*WIBW Topeka, Kas.	*WQZ Kalamazoo, Mich.	*WEEI Boston, Mass.	*WIBW Topeka, Kas.	*WQZ Kalamazoo, Mich.	*WIBW Topeka, Kas.	*WQZ Kalamazoo, Mich.	*WIBW Topeka, Kas.	*WQZ Kalamazoo, Mich.
KJRW Vancouver B. C.	*XEPN Pedroza Negras, Coah. W.	*CFMF Montreal, Que.	*WCCO Bridgeport (WCAC) M.	*XEPN Pedroza Negras, Coah. W.	*CFMF Montreal, Que.	*XEPN Pedroza Negras, Coah. W.	*CFMF Montreal, Que.	*XEPN Pedroza Negras, Coah. W.	*CFMF Montreal, Que.
*KFSO San Diego, Cal.	*WREC Memphis, Tenn.	*CRCW Windsor Ont.	*WCAD Baltimore, Md.	*KFSO San Diego, Cal.	*WREC Memphis, Tenn.	*KFSO San Diego, Cal.	*WREC Memphis, Tenn.	*KFSO San Diego, Cal.	*WREC Memphis, Tenn.
*KFRS San Francisco, Cal.	*WDAP Kansas City, Mo.	*WJAY Cleveland, Ohio.	*WIP Philadelphia, Pa.	*KFRS San Francisco, Cal.	*WDAP Kansas City, Mo.	*KFRS San Francisco, Cal.	*WDAP Kansas City, Mo.	*KFRS San Francisco, Cal.	*WDAP Kansas City, Mo.
*KGO Portland, Ore.	*WFMJ Milwaukee, Wis.	*WTFM Bangor, Maine.	*WLBZ Kalamazoo, Mich.	*KGO Portland, Ore.	*WFMJ Milwaukee, Wis.	*KGO Portland, Ore.	*WFMJ Milwaukee, Wis.	*KGO Portland, Ore.	*WFMJ Milwaukee, Wis.
*KSTAR Phoenix, Ariz.	*WOS Jefferson City, Mo.	*WML Washington, D. C.	*WPRO Providence, R. I.	*KSTAR Phoenix, Ariz.	*WOS Jefferson City, Mo.	*KSTAR Phoenix, Ariz.	*WOS Jefferson City, Mo.	*KSTAR Phoenix, Ariz.	*WOS Jefferson City, Mo.
*KJFX Pierre, S. D.	*WOI Ames, Iowa.	*WAIU Columbus, Ohio.	*WNSH Nashville, Tenn.	*KJFX Pierre, S. D.	*WOI Ames, Iowa.	*KJFX Pierre, S. D.	*WOI Ames, Iowa.	*KJFX Pierre, S. D.	*WOI Ames, Iowa.
*KFF Los Angeles, Cal.	WAAW Omaha, Neb.	*WMAQ Chicago, Ill.	*WMAQ Chicago, Ill.	*KFF Los Angeles, Cal.	WAAW Omaha, Neb.	*KFF Los Angeles, Cal.	WAAW Omaha, Neb.	*KFF Los Angeles, Cal.	WAAW Omaha, Neb.
		CMCQ Havana, Cuba.	*WPTF Raleigh, N. C.						
		NAA Arlington, Va.	*CFRB Toronto, Ont.						
		*TWLW Cincinnati, Ohio.	*WOR Newark, N. J.						
		*WGN Chicago, Ill.	*CKAC Montreal, Que.						
		*WBSR Atlanta, Ga.	*WHBB Portsmouth, N. H.						
		*WJR Detroit, Mich.	*WJZZ New York (WBAL) W.						
		*CMHX Cienfuegos, Cuba.	*WBBM Chicago, Ill.						
		*WNEAN Providence, R. I.	*WNEAN Providence, R. I.						
		*WMC Memphis, Tenn.	*WNY New York City.						
		*CMJK Camaguey, Cuba.	*WBYC New York City.						
		HIX Santo Domingo, RD.	WTCO Cumberland, Md.						
		*WHAS Louisville, Ky.	WHDH Boston, Mass.						
		WRUF Gainesville, Fla.	WEU Reading, Pa.						
		CMQ Havana, Cuba.	*TCRT Toronto, Ont.						
		WKAR E. Lansing, Mich.	*WESG Elmira, N. Y.						
		*WABC WBOQ N. York. W.	*WENN WLS Chicago. W.						
		CRCO Orlans, Ont.	WGBI WQAN Scranton, Pa.						
		WCOG Meridian, Miss.	WHRB Petersburg, Va.						
		WILL Urbana, Ill. (WBAK) K.	*WJVR Providence, R. I.						
		WMMN Fairmont, N. Y.	*WOST Atlanta, Ga.						
		WBL Stevens Pt. Wis.	*WBEEN Buffalo, N. Y.						
		*WJAX Jacksonville, Fla.	WEL New Haven, Conn.						
		*CRCM Montreal, Que.	WCRM Montreal, Que.						
		*WOR Boston, Mass.	WORA Boston, Mass.						
		WRAX-WPEN Philadelphia K.	CHNS Halifax, N. S.						
		*WBRG Birmingham, Ala.	*WDBJ Roanoke, Va.						
		*WAVE Louisville, Ky.	*WVSC Portland, Maine.						
		*XFO-XEFO Mexico City. S.	*WAAJ Jersey City, N. J.						
		*WRC Washington, D.C.	*WRC Washington, D.C.						
		CMCD Havana, Cuba.	WIBG Glenade, Pa.						
		*WCFI Chicago, Ill.	*KDKA Pittsburgh, Pa.						
		*WNNX Knoxville, Tenn.	WHN New York City.						
		*WIS Columbia, S.C.	*KYYW Philadelphia, Pa.						
		WDZ Tuscola Ill.	*CKLW Windsor-Detroit S.						
		*CKLW Windsor-Detroit S.	CMCY Havana, Cuba.						
		XEB Mexico City, Mex.							

Revision 50		*Columbia; †NBC Red; ‡NBC Blue; §NBC Red & Blue; ¶Mutual		WATTS POWER		2500 5000 10000 15000 25000 50000 100,000 250,000 500,000		F G H I J K L M N O P Q R S T U V W X Y Z	
WESTERN		MIDDLE WESTERN		CENTRAL		EASTERN		WESTERN	
KWJJ Portland, Ore.	*KRIL Dallas, Tex.								
KNX Los Angeles, Cal. W.	KFBI Abilene, Kas.								
WJAG Norfolk, Nebr.	*KTHS Hot Springs, Ark. T								
KJBS San Francisco, Cal. M.	WCAC Carthage, Ill. (WDZH) H								
	*KMOX St. Louis, Mo.								
	*KWKH Shreveport, La.								
	KSOO Sioux Falls, S. D.								
	WTAW College Station, Tex. M								
	KFOO-KRSC Washington, H								
	KFSG-KRDK Los Angeles M								
	*KSL Salt Lake City, Utah W								
	*KVOO Tulsa, Okla.								
	XEH Monterrey, Mex.								
	XED Guadalajara, Mex.								
	WDOY Minneapolis, Minn.								
	WDOI San Antonio, Tex. W								
	KADA-WBYY-WCLO								
	WBZZ-WCAT-WIL-KMLB								
	KSNUN-KGER-KGFJ-KFXD								
	KQV-KFJJ-KASA-KDON								
	KIEM-KFXM-KPPC Cal. H								
	KIUF Phoenix, Ariz.								
	KJOC Lethbridge, Alta.								
	KJVA San Francisco, Cal.								
	KGGU Mandan, N. Dakota K								
	KTFI Twin Falls, Idaho.								
	KFOX Long Beach, Cal.								
	KQVO Missoula, Mont.								
	KQVA Tucson, Arizona.								
	*KOL Seattle, Wash.								
	*WIBA Madison, Wis.								
	WRR Dallas, Tex.								
	*WBF Superior, Wis.								
	*KTRH Houston, Tex.								
	*KALE-KFJR Portland, Ore. M								
	KFAC Los Angeles, Cal.								
	KMBD-KINT-KKRO-KFYO								
	KCCX-KPFL-KGEZ-KIJJ								
	KCRJ-KIT-KGFV-CFJC								
	KID Idaho Falls, Idaho.								
	*KGMH Honolulu, Hawaii.								
	KMO Tacoma, Wash.								
	KQY Phoenix, Ariz.								
	*KQIR Butte, Mont.								
	KIDD Boise, Idaho.								
	KGER Long Beach, Cal.								
	KAST-KGFL-KIUP-KSLM								
	KGAR-KJIM-KRKO-KICA								
	KRE-KVL-KUJ-KERN								
	*KOH Reno, Nev.								
	KOOS Marshfield, Ore.								
	KOY Phoenix, Ariz.								
	*KLO Ogden, Utah.								
	KGNC Amarillo, Tex.								
	KBR-KBC-KRLE								
	KGFC-KMAC-KONO-KRBO								
	KGCC-KXL-KGIV-KIDW								
	*KECA Los Angeles, Cal.								
	KDFN Casper, Wyo.								
	KLS Oakland, Cal.								
	CFCT Victoria, B.C.								
	*KSTP St. Paul-Minn. polls. T								
	*KOMA Oklahoma City, Okla. S								
	KFBK Sacramento, Cal.								
	KVUE-KDB-KRNR								
	KXO-KGFK-KPQ-KGKB								
	KOTN-KROW-KPLC-WTMV								
	WHFF-KGY-KGI-WKBB								
	*KNEL-KBIX-WHBB								
	WSXB Kansas City, Mo.								
	WEXAI B. akersfield Cal.								

Copyright, 1936 by Haynes' Radio Log, 161 W. Harrison St., Chicago

SHORT-WAVE STATIONS of U. S. and CANADA

Ordinarily, you will hear the many political broadcasts which will feature 1936 through your nearest regular broadcast station which you can find in the table above. However, many radio set owners will find the short-wave station list below extremely valuable.

Most of these short-wave stations operate in conjunction with the network stations on the broadcast

band, relaying the same programs. Short-wave stations provide satisfactory daytime reception in isolated localities where regular daytime reception on the broadcast band is impossible. Also, when atmospheric conditions on the broadcast band are so unfavorable as to prevent reception of a desired program, the same program may very often be heard perfectly by dropping down to the short-wave band.

Mega-cycles	Station	Location	Time (Eastern Standard)
21.54	W8XK	Pittsburgh, Pa.	7 to 9 A.M.
21.52	W2XE	Wayne, N. J.	6:30 A.M. to 10 A.M.
17.78	W3XAL	Bound Brook, N. J.	8 A.M. to 3 P.M.
17.76	W2XE	Wayne, N. J.	10 A.M. to Noon
15.33	W2XAD	Schenectady, N. Y.	10 to 2 P.M.
15.27	W2XE	Wayne, N. J.	Relays WABC Noon to 5 P.M.
15.21	W8XK	Pittsburgh, Pa.	9 A.M. to 7 P.M.
11.87	W8XK	Pittsburgh, Pa.	Relays KDKA 5 to 9 P.M.
11.83	W2XE	Wayne, N. J.	Relays WABC 5 to 9 P.M.
11.79	W1XAL	Boston, Mass.	Sun. 3:30 to 5 P.M. Mon. & Fri., 5:30 to 9 P.M.
9.59	W3XAU	Philadelphia, Pa.	1

KEEP ABREAST of WORLD AFFAIRS with SHORT-WAVE



ROGER H. ECKERSLEY

This is the man responsible for the many delightful programs heard from the English stations at Daventry. For he is Director of Entertainment of the British Broadcasting Corporation.

The owner of a powerful, modern, up-to-date radio receiver can keep abreast not only of affairs in this country but also of happenings throughout the world. Through the many news reports broadcast in English from foreign stations, the American radio listener is able to hear news as it is made and receive immediate information concerning events as they occur.

Hundreds of thousands of listeners have found short-wave radio one of the greatest aids to self-education and enlightenment ever developed. It opens one's home to world-famous lecturers and international authorities not only of this country but of countries abroad.

Leaders of many nations have recognized the value of radio as a means for informing the world concerning events that transpire within the borders of their domains and for helping other nations to understand their points of view.

Thus, short-wave reception gives the listener valuable insight into the thoughts and feelings of different peoples throughout the world regarding international developments in which all of us are interested. And in addition to this



RHEINSTEIN CASTLE, GERMANY

Ancient castles like this one on the Rhine River are constant reminders of the days when fine music was heard only by feudal lords and their households. Now, through radio, the whole world hears glorious music from Germany through the powerful short-wave stations at Zeesen.

great wealth of information and education, short-wave radio provides a most lavish abundance of delightful and fascinating entertainment. Fortunate indeed is the owner of a new 1937 Philco with the built-in *Foreign Tuning System* and the *Spread-Band Dial*. On this dial all the principal foreign short-wave stations are spread farther apart . . . and named and located, in color . . . enabling you to tune by name — easily, quickly and accurately. And the *Foreign Tuning System*, by automatically tuning the Philco High-Efficiency Aerial, more than doubles the num-

ber of foreign stations you can get and enjoy.

In fact, this new development takes all the uncertainty out of short-wave reception. It shows you exactly where to look for foreign stations. It works in conjunction with an aerial so sensitive that it will pick up the faintest signal from thousands of miles away. It utilizes a lead-in system that reduces to a minimum all interference from man-made static. And by operating with a built-in Aerial Selector that tunes the aerial as you tune the set, it gives you a perfection of reception that has never been possible before.

Get the best out of both foreign and domestic programs by getting a new 1937 Philco!

Countries You'll Hear Most Often . . .

For the adventurously inclined radio listener, short-wave reception undoubtedly provides the greatest thrills in radio. The marvel of tuning-in broadcasts from many countries throughout the world has captured the imagination of millions and brought the nations of the earth into their living rooms.

Perhaps many of you who receive this Philco Political Radio Atlas do not fully realize just how much delightful foreign entertainment can be had — or how consistently it may be enjoyed. The list of cities from which the average owner of a new Philco radio receives delightful entertainment almost nightly reads like a gazetteer of the world, so great is their number and so representative are they of the countries of the earth.

A typical radio tour takes the listener to many interesting parts of the world. For instance, you may first hear a splendid concert by a Symphony Orchestra or a sparkling dance program from



ANITA CAMPS

One of the most popular programs of Station YV2RC at Caracas, Venezuela, is "The Theater of the Air" and Miss Camps is one of the most distinguished actresses featured on these broadcasts. Dramas and comedies of leading Spanish and Latin-American authors are presented.

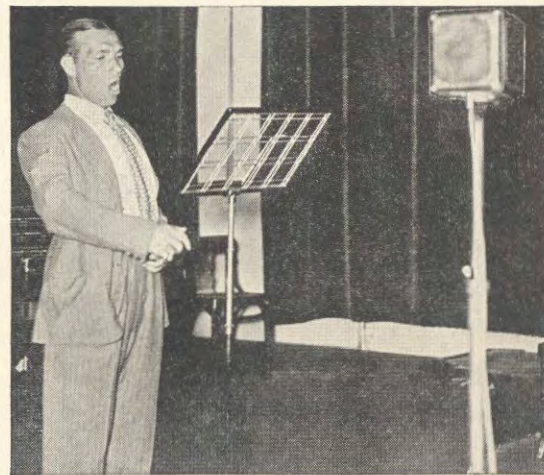


MARIA TERESA AVELAR

Miss Avelar's rich, clear voice has made her a prime favorite of listeners to Station XEBT at Mexico City, Mexico. Because of long Latin-American ancestry, she is naturally fitted to bring to the air waves delightful interpretations of the songs of the old and the new Mexico.

London. Then, just a slight turn of the dial takes you instantly to Berlin where you are likely to hear anything from fine instrumental or vocal recitals to rollicking Bavarian dances and military band music. You listen for a while, delighted with the high quality of the programs, then move on again. This time you may pick up Paris where a lovely soprano is singing the gay songs of the boulevards.

Another slight turn of the dial and you tune in Madrid or Lisbon and hear stirring Spanish and Portuguese music — or Rome where you hear opera as it is sung nowhere else in the world. And if you like strumming guitars and clicking castanets, there is a vast number of delightful stations to be found in South and Central America and the islands of the Caribbean. You'll find stations in Venezuela, Colombia, Brazil, Ecuador, Mexico, Costa Rica, Panama, Cuba and the Dominican Republic ready and waiting almost

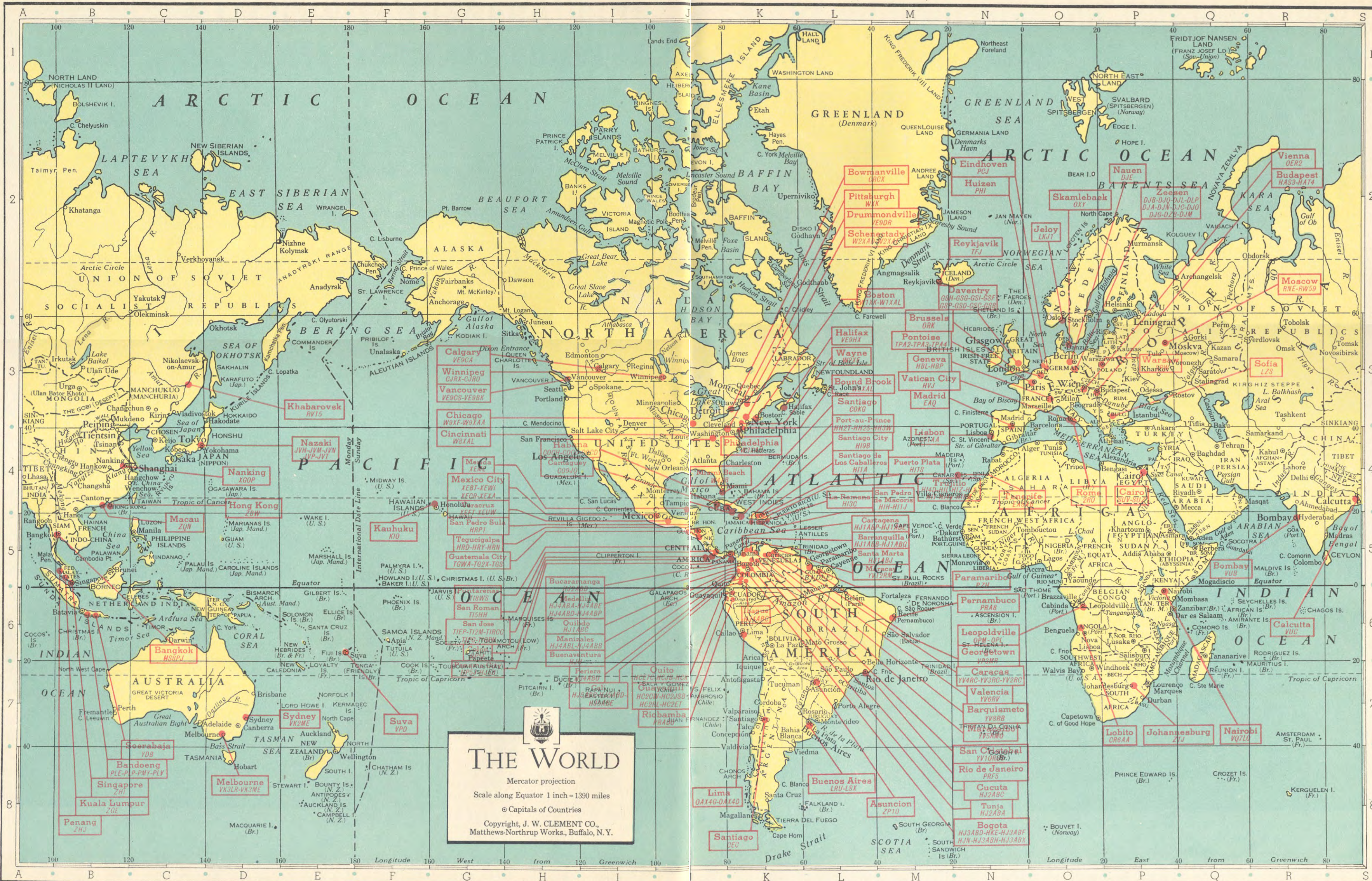


JOSE MUCCI

If you would hear famous operatic arias sung with a fervor and perfection found nowhere else in the world, tune to Station 2RO at Rome, Italy. Mr. Mucci is one of this station's leading artists. He provides listeners to 2RO with many a fine program.

every night to provide you with some of the most fascinating music you ever heard.

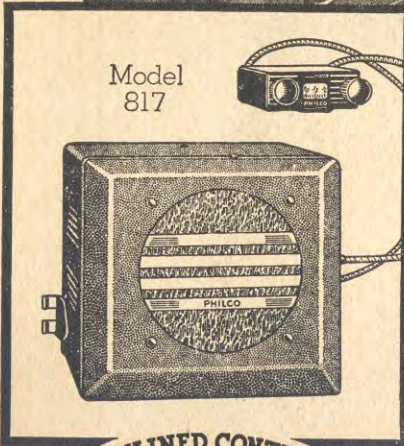
In addition to all this, one can often pick up fine broadcasts from the land of the Soviets, the Netherlands, Belgium, Switzerland and Hungary. And if one lives in the Western part of the United States or Canada, he will frequently hear Australia, Java, Japan and other stations in the Far East.



Principal Short-Wave Stations of the World

Mega-cycles	Station	Location	Time (Eastern Standard)	Mega-cycles	Station	Location	Time (Eastern Standard)
21.54	W8XK	Pittsburgh, Pa.	7 to 9 A.M.	6.81	HIH	San Pedro de Macoris, R.D.	7:30 to 9 P.M. except Sundays.
21.52	W2XE	Wayne, N. J.	6:30 to 10 A.M.	6.75	JVT	Nazaki, Japan	1:30 to 8 A.M.
21.47	GSH	Daventry, England	6 to 8:45 A.M.; 9 to Noon	6.71	TIEP	San Jose, Costa Rica	7 to 10:30 P.M. except Sunday.
20.04	OPL	Leopoldville, Belgian Congo	Phones ORG mornings.	6.70	TIZM	San Jose, Costa Rica	9 to 11 P.M. Irregularly.
18.83	PLE	Bandoeng, Java	Phones Holland 6 to 11 A.M.	6.66	ZPIO	Asuncion, Paraguay	10 to 11:45 P.M. Irregularly.
17.79	GSG	Daventry, England	6 to 8:45 A.M.; 9 A.M. to Noon.	6.67	HC2RL	Guayaquil, Ecuador	Sun. 5:45 to 7:45 P.M.; Tues. 9:15 to 11:15 P.M.
17.78	W3XAL	Bound Brook, N. J.	8 A.M. to 3 P.M.	6.63	HIT	Trujillo, R.D.	5:40 to 8:40 P.M.
17.77	PHI	Huizen, Netherlands	7:30 to 10:30 A.M. except Tues. and Fri.	6.62	PRADO	Riobamba, Ecuador	Thursday 9 to 11:30 P.M.
17.76	W2XE	Wayne, N. J.	10 A.M. to Noon.	6.55	TIRCC	San Jose, Costa Rica	Daily 6 to 7 P.M.; Thurs., Sun. 6 to 11 P.M.
15.37	DJE	Nauen, Germany	7 to 11:30 A.M. Irregularly.	6.55	HI4D	Trujillo, R.D.	4:40 to 7:40 P.M.
15.33	W2XAD	Budapest, Hungary	Sundays 9 to 10 A.M.	6.52	YV6RV	Valencia, Venezuela	12 to 2 P.M. and 6 to 10 P.M.
15.31	GSP	Schenectady, N. Y.	10 A.M. to 2 P.M.	6.50	HIL	Trujillo, R.D.	5:40 to 7:40 P.M.
15.29	LUR	Daventry, England	6 to 8 P.M.	6.48	HJ5ABD	Cali, Colombia	7 to 10 P.M.
15.28	DJO	Buenos Aires, Argentina	Testing 3 to 9:30 P.M.	6.46	HJ4ABC	Ibaque, Colombia	8 to 11 P.M.
15.27	W2XE	Zeesen, Germany	12:30 to 7 A.M.	6.45	HJ1ABB	Barranquilla, Colombia	4:30 to 10 P.M.
15.26	GSI	Wayne, N. J.	Relays WABC Noon to 5 P.M.	6.45	HI4V	Trujillo, R.D.	5 to 10 P.M. Irregularly.
15.24	TPA2	Daventry, England	12:15 to 3:40 P.M.	6.42	HIIS	Puerto Plata, R.D.	11:40 A.M. to 1:40 P.M.; 5:40 to 7:40; 9:40 to 11:40 P.M.
15.22	PCJ	Pontoise, France	6 to 11 A.M.	6.41	TIPG	San Jose, Costa Rica	Noon to 2 P.M.; 6 to 11:30 P.M.
15.21	W8XK	Eindhoven, Holland	6 to 10 A.M. Sunday and Wednesday	6.37	YV4RC	Caracas, Venezuela	4:30 to 10:30 P.M.
15.20	DJB	Pittsburgh, Pa.	9 A.M. to 7 P.M.	6.35	HRV	Tegucigalpa, Honduras	6:45 to 9:30 P.M.
15.18	RNE	Zeesen, Germany	3:45 to 11:30 A.M.; 4:50 to 10:45 P.M.	6.33	HRP1	San Pedro Sula, Honduras	6:30 to 10 P.M.
15.14	GSF	Moscow, U.S.S.R.	1:30 P.M. Sun.	6.31	HIZ	Trujillo, R.D.	5:30 to 9 P.M.
15.11	HVJ	Daventry, England	9 A.M. to Noon; 6 to 8 P.M.	6.30	YV12RM	Maracay, Venezuela	8 to 10:30 A.M.; 4:30 to 11 P.M.
15.11	DJL	Vatican City	10:30 to 10:45 A.M.	6.25	OAX4G	Lima, Peru	Daily 7 to 10:30 P.M.; Wed. 6 P.M.
15.08	RNE	Zeesen, Germany	5:45 to 7:30 A.M.	6.23	HRD	La Ceiba, Honduras	8 to 11 P.M.
14.97	LZS	Moscow, U.S.S.R.	6 to 10 A.M. Sun.	6.19	HIIA	Santiago de Caballeros, R.D.	11:40 A.M. to 1:40 P.M.; 7:40 to 8:40 P.M.
14.60	JVH	Sophia, Bulgaria	Sundays, 3:30 to 11:30 A.M.; 3:30 to 4:30 P.M.	6.18	XEXA	Mexico City	8 to 11:30 A.M.; 3 to 5 P.M.; 7 to 11 P.M.
14.10	HJ5ABE	Nazaki, Japan	Phones Europe from 4 to 8 A.M.	6.17	HJ2ABA	Tunja, Colombia	1 to 2 P.M. and 7 to 10 P.M.
13.83	SUZ	Cali, Colombia	7 P.M. to Midnight. Irregularly.	6.17	HJ3ABF	Bogota, Colombia	7 to 11:15 P.M.
13.63	SPW	Cairo, Egypt	Phones England 7A.M. to 3:30 P.M.	6.16	YV3RC	Caracas, Venezuela	10 A.M. to 1 P.M.; 3 to 9:30 P.M.
13.07	VPD	Warsaw, Poland	Mon., Wed., Fri. 10:30 to 11:30 A.M.	6.15	COKG	Santiago, Cuba	8:30 to 11 P.M.
12.23	TFJ	Suva, Fiji Islands	Daily except Sun. 12:30 to 1:30 A.M.	6.15	CJRO	Winnipeg, Canada	5 to 11 P.M.
12.00	RNE	Reykjavik, Iceland	1:40 to 2 P.M. Sundays.	6.15	HJ5ABC	Cali, Colombia	7 to 10 P.M. except Sat. and Sun.
11.88	TPA3	Moscow, U.S.S.R.	6 to 10 A.M. Sun.; 6 A.M. Wed.; 4 P.M. Sun., Mon., Wed. and Fri.	6.14	W8XK	Pittsburgh, Pa.	9 P.M. to 1 A.M.
11.87	W8XK	Pontoise, France	10:15 A.M. to 5 P.M.	6.13	ZGE	Kuala Lumpur, S.S.	Sun., Tues. and Fri. 6:40 to 8:40 A.M.
11.85	DJP	Pittsburgh, Pa.	Relays KDKA 5 to 9 P.M.	6.13	HJ4ABP	Medellin, Colombia	6 to 11 P.M.
11.83	W2XE	Zeesen, Germany	Noon to 2 P.M.	6.13	HI5M	Trujillo, R.D.	6:40 to 9:10 P.M.
11.81	ZRO	Wayne, N. J.	Relays WABC 5 to 9 P.M.	6.13	COCD	Havana, Cuba	5 P.M. to 1 A.M.
11.81	HJ4ABA	Rome, Italy	8:15 A.M. to 12:15 P.M.; 1:15 to 5:15 P.M.	6.13	VE9HX	Halifax, Canada	9:30 A.M. to 1:30 P.M.
11.79	W1XAL	Medellin, Colombia	11:30 A.M. to 1 P.M. and 6:30 to 10:30 P.M.	6.12	W2XE	Wayne, N. J.	7 to 10 P.M.
11.79	DJO	Boston, Mass.	Sundays 3:30 to 5:00 P.M.; Mon., Fri. 5:30 to 9 P.M.	6.12	XEFT	Veracruz, Mexico	11:30 A.M. to 4 P.M.; 7:30 P.M. to Midnight
11.77	DJD	Zeesen, Germany	3 to 4:20 P.M.	6.12	HJ3ABX	Bogota, Colombia	7 to 11 P.M.
11.75	GSD	Zeesen, Germany	11:30 A.M. to 4:25 P.M.; 4:50 to 10:45 P.M.	6.11	HJ1ABE	Cartagena, Colombia	Daily 7:30 to 9 P.M.; Mon. 10:30 P.M.
11.72	CJRX	Daventry, England	9 to 11 P.M.; 11:30 P.M. to 1:30 A.M.	6.11	VUC	Calcutta, India	9:30 A.M. to Noon; Sat. 11:45 P.M. to 3 A.M.
11.71	TPA4	Winnipeg, Canada	4 to 11 P.M.	6.11	HJ4ABB	Manizales, Colombia	8:00 to 10 P.M.
11.71	KIO	Pontoise, France	6:15 to 9 P.M. and 10 P.M. to 1 A.M.	6.10	HI3C	La Romana, R.D.	5 to 6:30 P.M.
11.57	HH2T	Kauhuku, Hawaii	Heard evenings testing.	6.10	W3XAL	Bound Brook, N. J.	Mon., Wed. and Sat. 4 P.M. to 1 A.M.
11.50	PLP	Port-au-Prince, Haiti	Evenings.	6.10	W9XF	Chicago, Ill.	Sun., Tues., Thurs. 8 to 1 A.M.; Daily 12 to 1 A.M.
11.47	HSM8PJ	Bandoeng, Java	5:30 to 11 A.M. Daily.	6.09	ZTJ	Johannesburg, Africa	3:30 to 7 A.M.; 9 A.M. to 4 P.M.
10.96	HVM	Bangkok, Siam	Mondays 8 to 10 A.M.	6.09	CRCX	Bowmanville, Canada	5:30 to 11:30 P.M. Daily; 11:45 A.M. to 11:30 P.M. Sundays.
10.74	JSM	Nazaki, Japan	Daily 4 to 7:40 A.M.	6.08	VQ7LO	Nairobi, Africa	5:45 to 6:15 A.M.; 11 A.M. to 3:30 P.M.
10.67	CEC	Santiago, Chile	Daily 7 to 8 P.M.; Thurs., Sun. 8:30 to 9 P.M.	6.08	W9XAA	Chicago, Ill.	6 to 10 P.M.
10.66	JVN	Nazaki, Japan	Tues., Fri. 2 to 3 P.M.; Mon., Thurs. 4 to 5 P.M.	6.08	DJM	Zeesen, Germany	7:30 to 9:30 P.M.
10.35	LSX	Buenos Aires, Argentina	Irregularly.	6.08	HP5F	Colon, Panama	11:45 A.M. to 1:15 P.M. and 7:45 to 10 P.M.
10.33	ORK	Brussels, Belgium	1:30 to 3 P.M.	6.08	ZHJ	Penang, S.S.	6:40 to 8:40 A.M.
10.14	OPM	Leopoldville, Belgian Congo	Phones ORK 9 to 11 A.M.; 3 to 6 P.M.	6.07	VE9CS	Vancouver, B.C.	Daily 6 to 7 P.M.; Sun. 1:45 P.M. to 1 A.M.
10.05	SUV	Cairo, Egypt	Phones England after 3:30 P.M.	6.07	OER2	Vienna, Austria	9 A.M. to 5 P.M. Week days.
10.04	DZB	Zeesen, Germany	7 to 9 P.M.	6.06	HJ4ABL	Manizales, Colombia	11 A.M. to Noon; 5:30 to 7:30 P.M.; Sat. 10:30 P.M.
9.87	EAQ	Madrid, Spain	5:15 to 9:30 P.M.	6.06	OXY	Skamlebaek, Denmark	1 to 6 P.M.
9.66	CQN	Macau, China	Mondays and Fridays 7 to 8:30 A.M.	6.06	W8XAL	Cincinnati, Ohio	5:30 A.M. to 7 P.M.; 10 P.M. to 1 A.M.
9.65	CT1AA	Lisbon, Portugal	Tues, Thurs. and Sat., 3:30 to 6 P.M.	6.06	W3XAU	Philadelphia, Pa.	7 to 10 P.M.
9.65	YDB	Sorabaja, Java	5:30 to 11 A.M.	6.05	HJ3ABD	Bogota, Colombia	7:30 to 11 P.M.
9.64	ZRO	Rome, Italy	Daily except Sun. 6 to 7:30 P.M.	6.05	HI9B	Santiago City, R.D.	6 to 10 P.M.; 12:30 to 1:40 A.M.
9.61	HJ1ABP	Cartagena, Colombia	5 to 11 P.M.	6.04	HJ1ABG	Barranquilla, Colombia	6 to 10 P.M.
9.59	HBL	Geneva, Switzerland	5:30 to 6:15 P.M. Sat.	6.04	W4XB	Miami Beach, Fla.	11 A.M. to 1 P.M.; 7:30 P.M. to 10:30 P.M.
9.59	HH3W	Port-au-Prince, Haiti	7 to 8:30 P.M.	6.04	HJ4ABC	Petiera, Colombia	9:30 to 11 A.M.; 7 to 8 P.M.
9.59	W3XAU	Philadelphia, Pa.	11 A.M. to 7 P.M.	6.04	PR48	Pernambuco, Brazil	2:30 to 8:30 P.M.
9.59	VK2ME	Sydney, Australia	Sundays Midnight to 2 A.M.; 5 to 9 A.M.	6.04	W1XAL	Boston, Mass.	7 to 9 P.M. Tues., Thurs. 5 to 7 P.M. Sun.
9.59	HP5J	Panama City, Panama	7 to 10:30 P.M.	6.03	VE9CA	Calgary, Canada	6 A.M. to Noon; 7 P.M. to Midnight Sun.
9.58	PCJ	Eindhoven, Holland	Sun. 6 to 7 P.M.; Wed. 7 to 10 P.M.	6.03	HP5B	Panama City, Panama	Noon to 1 P.M.; 7 to 10:30 P.M.
9.58	GSC	Daventry, England	6 to 8; 9 to 11 P.M.	6.02	XEUW	Veracruz, Mexico	8 P.M. to 12:30 A.M. Irregularly.
9.58	VK3LR	Melbourne, Australia	3:15 to 7:30 A.M.	6.02	DJC	Zeesen, Germany	11:45 A.M. to 4 P.M.
9.57	W1XK	Boston, Mass.	5 A.M. to 11 P.M.	6.01	HJ3ABH	Bogota, Colombia	11:30 A.M. to 2 P.M.; 6 to 11 P.M.; Sun. 4 to 11 P.M.
9.57	VUB	Bombay, India	Wed., Thurs., and Sat. 11 A.M. to 12:30 P.M.	6.01	COCO	Havana, Cuba	9:30 A.M. to 12:30 P.M.; 4 to 7 P.M.; 8 to 10 P.M.; Sat. 11:30 P.M.
9.56	DJA	Zeesen, Germany	12:30 to 3:50 A.M.; 8 to 11 A.M.; 5 to 10:45 P.M.	6.01	ZHI	Singapore, S.S.	Mon., Wed., Thurs. 5:40 to 8:10 A.M. Sat. 10:40 P.M. to 1:10 A.M.
9.56	HJ1ABE	Cartagena, Colombia	7:30 to 9 P.M.	6.01	HJ1ABJ	Santa Marta, Colombia	6 to 11:30 P.M.
9.54	DJN	Zeesen, Germany	4:50 to 10:45 P.M.	6.00	VE9DR	Drummondville, Canada	5 P.M. to Midnight. Irregularly.
9.54	XGOP	Nanking, China	3:30 to 5:30 A.M.	6.00	RW59	Moscow, U.S.S.R.	2:30 to 6 P.M.
9.53	LKJ1	Jeloy, Norway	5 to 8 A.M.; 11 A.M. to 6 P.M.	6.00	HJ1ABC	Quibdo, Colombia	Daily 5 to 6 P.M.; Wed. and Sun. 9 to 11 P.M.
9.53	W2XAF	Schenectady, N. Y.	4 P.M. to Midnight.	6.00	XEBT	Mexico City, Mexico	6 P.M. to 3 A.M. Irregularly.
9.52	OXY	Skamlebaek, Denmark	1 to 6 P.M. Irregularly.	5.99	HJ2ABD	Bucaramanga, Colombia	11:30 A.M. to 12:30 P.M.; 5:30 to 6:30; 7:30 to 10:30 P.M.
9.52	RNE	Moscow, U.S.S.R.	7 P.M. Daily	5.98	XEWI	Mexico City, Mexico	Tues. and Fri. 6:30 to 7:45 P.M. and 9 to 11 P.M.; Sat. 8 to 9 P.M.
9.51	GSB	Daventry, England	11:30 P.M. to 1:30 A.M.; 12:15 to 5:45 P.M.	5.98	HIX	Trujillo, R.D.	Daily 4:40 to 5:40 P.M.; Tues. and Fri. 8:10 to 10:10 P.M.; Sun. 7:40 to 10:40 A.M.
9.51	VK3ME	Melbourne, Australia	Daily except Sun. 4 to 7 A.M.	5.97	HVJ	Vatican City	Daily 2 to 2:15 P.M.; Sun. 5 to 5:30 A.M.
9.51	HJU	Buenaventura, Colombia	8 to 11 P.M.	5.97	HJN	Bogota, Colombia	6 to 11 P.M.
9.50	PRF5	Rio de Janeiro, Brazil	4:45 to 5:45 P.M.	5.97	HJ2ABC	Cucuta, Colombia	11 A.M. to Noon; 6 to 9:30 P.M.
9.45	TGWA	Guatemala City, Guatemala	8 P.M. to Midnight.	5.94	TG2X	Guatemala City, Guatemala	4 P.M. to 2 A.M. Irregularly.
9.42	COCH	Havana, Cuba	8 to 10 P.M.	5.93	HJ4ABE	Medellin, Colombia	6 to 10:30 P.M.
9.41	PLV	Bandoeng, Java	Tues., Thurs., Sat., 10 to 10:30 A.M.	5.91	HI2S	Port-au-Prince, Haiti	7:30 to 9:40 P.M. Irregularly.
9.12	HAT-4	Budapest, Hungary	Sundays 6 to 7 P.M.	5.89	HCK	Quito, Ecuador	Mon. and Fri. 8 to 10 P.M.
8.77	HCJB	Quito, Ecuador	Daily except Mon., 7:30 to 9:30 P.M.	5.87	HRN	Tegucigalpa, Honduras	6:30 to 10 P.M.
8.75	ZBW	Hongkong, China	4 to 10 A.M.	5.86	HI1J	San Pedro de Macoris, R.D.	12:10 to 1:40; 6:10 to 8:40 P.M.
8.66	CO9JQ	Camaguey, Cuba	5:30 to 6:30 P.M.; 8 to 9 P.M.	5.85	YV5RMO	Maracaibo, Venezuela	11 A.M. to 12:30 P.M.; 5 to 9 P.M.
8.41	HC2CW	Guayaquil, Ecuador	8 to 11:30 P.M.	5.82	TIGPH	San Jose, Costa Rica	Noon to 2 P.M.; 7 to 11 P.M.
8.19	XEME	Merida, Mexico	9 A.M. to Noon; 5 to 11 P.M.	5.81	YV8RB	Barquisimeto, Venezuela	Noon to 1 P.M.; 6 to 10 P.M.
7.87	HC2JSB	Guayaquil, Ecuador	9 A.M. to 2 P.M.; 6 to 11 P.M.	5.80	YV2RC	Caracas, Venezuela	5:15 to 9:30 P.M.
7.80	HBP	Geneva, Switzerland	5:30 to 6:15 P.M. Saturdays.	5.78	OAX4D	Lima, Peru	Wed. and Sat. from 8 to 11:30 P.M.
7.60	T18WS	Puntarenas, Costa Rica	8:30 to 10 P.M. Daily except Sunday.	5.75	HJ4ABD	Medellin, Colombia	8 to 11:30 P.M.
7.51	JVP	Nazaki, Japan	Tues., Fri., 4 to 5 P.M.	5.74	TGS	Guatemala City, Guatemala	Wed., Thurs., and Sun. 6 to 9 P.M.
7.38	XECR	Mexico City, Mexico	Sundays 6 to 8 P.M.	5.72	YV10RSC	San Cristobal, Venezuela	7 to 11:30 P.M. Irregularly.
7.22	HKE	Bogota, Colombia	Mon. 6 to 7 P.M.; Tues., Fri. 8 to 9 P.M.	5.48	T15HH	San Roman, Costa Rica	3:30 to 4; 8 to 11:30 P.M.
7.21	EA8AB	Tenerife, Canary Is.	Mon., Fri., 3:15 to 4:15 P.M.	5.15	PMY	Bandoeng, Java	6 A.M. to Noon.
7.17	CR6AA	Lobito, Angola, Africa	Wed. and Sat. 2:30 to 4:30 P.M.	4.79	VE9BK	Vancouver, Canada	2 to 4 P.M.; 7 to 9 P.M.; 11 P.M. to 1 A.M.
7.08	VP3MR	Georgetown, British Guiana	Between 3 and 8:45 P.M. Irregularly.	4.60	HC2ET	Guayaquil, Ecuador	Wed. and Sat. 9 to 11 P.M.
7.00	PZH	Paramaribo, Dutch Guiana	2:40 to 9:40 P.M. Irregularly.	4.25	RV15	Khabarovsk, U.S.S.R.	1 to 9 A.M.
6.89	HCETC	Quito, Ecuador	Thurs. 8:15 to 10:45 P.M.				

*The above information was furnished through the courtesy of the International Short-Wave Radio Club, East Liverpool, Ohio — an organization with members throughout the world. For the PHILCO owner who wishes additional information regarding short-wave reception, including changes in stations and time as they occur, a subscription to the "International Short-Wave Radio" magazine, published monthly by this club, will prove very interesting and helpful.



Model
817



SENSATIONAL NEW PHILCO FEATURES

- New Streamlined Control Unit that fits in or on Instrument Panel
- New Illuminated "Wide-Vision" Dial
- Sturdy, Compact Fully Shielded Container
- Improved Automatic Volume Control Insures Uniform Reception
- Easier Installation Than Ever Before
- Adjustable Antenna Circuit for Maximum Performance with either Roof or Undercar Aerial
- Improved Full-Wave Vibrator
- Specially Designed Built-in Filters and Shielding Eliminate Motor Interference
- New Multi-Function Philco High-Efficiency Tubes
- New Electro-Dynamic Speaker
- New Tone Control and New Sensitivity Control Operate Directly from Control Unit on Car Instrument Panel
- Greatly Increased Power
- Exceptional Sensitivity and Selectivity
- Low Current Consumption

Every Mile is a Happier Mile with the amazing new **PHILCO** *Auto Radio*

Dull roads seem brighter and long trips shorter with a Philco in your car! Over boulevard or cobblestones, through city traffic or on quiet byways, the new Philco Auto Radios give you greater power, increased sensitivity and selectivity, finer tone and the best all-around performance in auto radio history. And new low prices make Philco more than ever the World's Greatest Auto Radio VALUE!

Decide now to own a Philco — the exclusive choice of 29 great car manufacturers. Quickly installed in ANY car, regardless of make, model or year — or easily transferred from one car to another. New streamlined control unit fits in or on car instrument panel.

Five New Models—\$39.95 to \$77.60

See and hear it at:

WINDHAM ELECTRIC CO.
73 CHURCH STREET
WILLIMANTIC, - - - - - CONN.

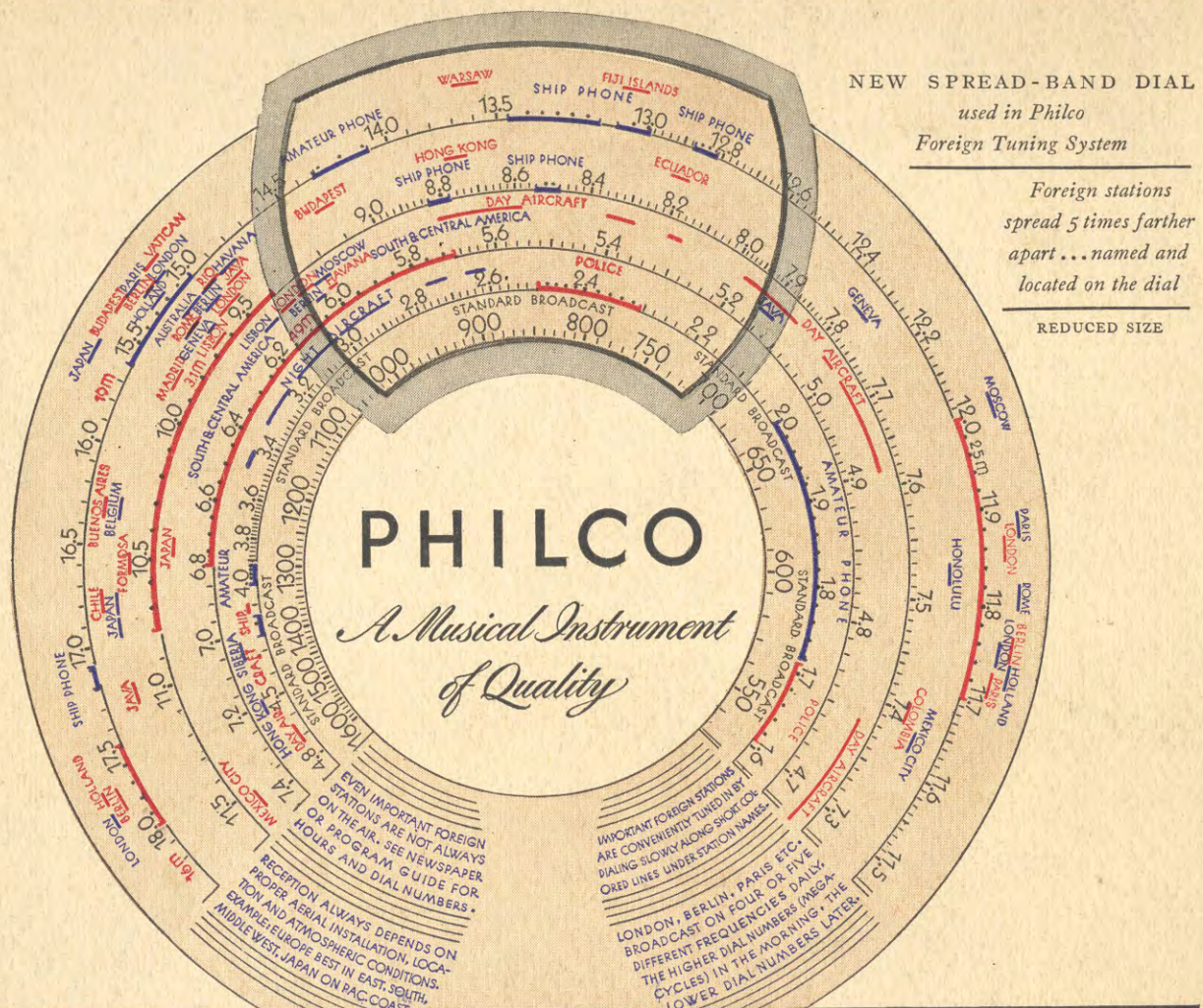
PHILCO
Home Radios
\$20 to \$600

Introducing the new 1937 Philco Foreign Tuning System

BUILT-IN, AUTOMATIC AND

“Only Philco has it!”

Europe..South America..Asia..not as an occasional thrill, but as reliable, enjoyable sources of radio entertainment and education. The 1937 Philco *Foreign Tuning System* brings in many more foreign stations..and we have made it easy for you to find them.



And remember—by automatically tuning the Philco High-Efficiency Aerial...the built-in Philco *Foreign Tuning System* more than doubles the foreign stations you can get and enjoy.