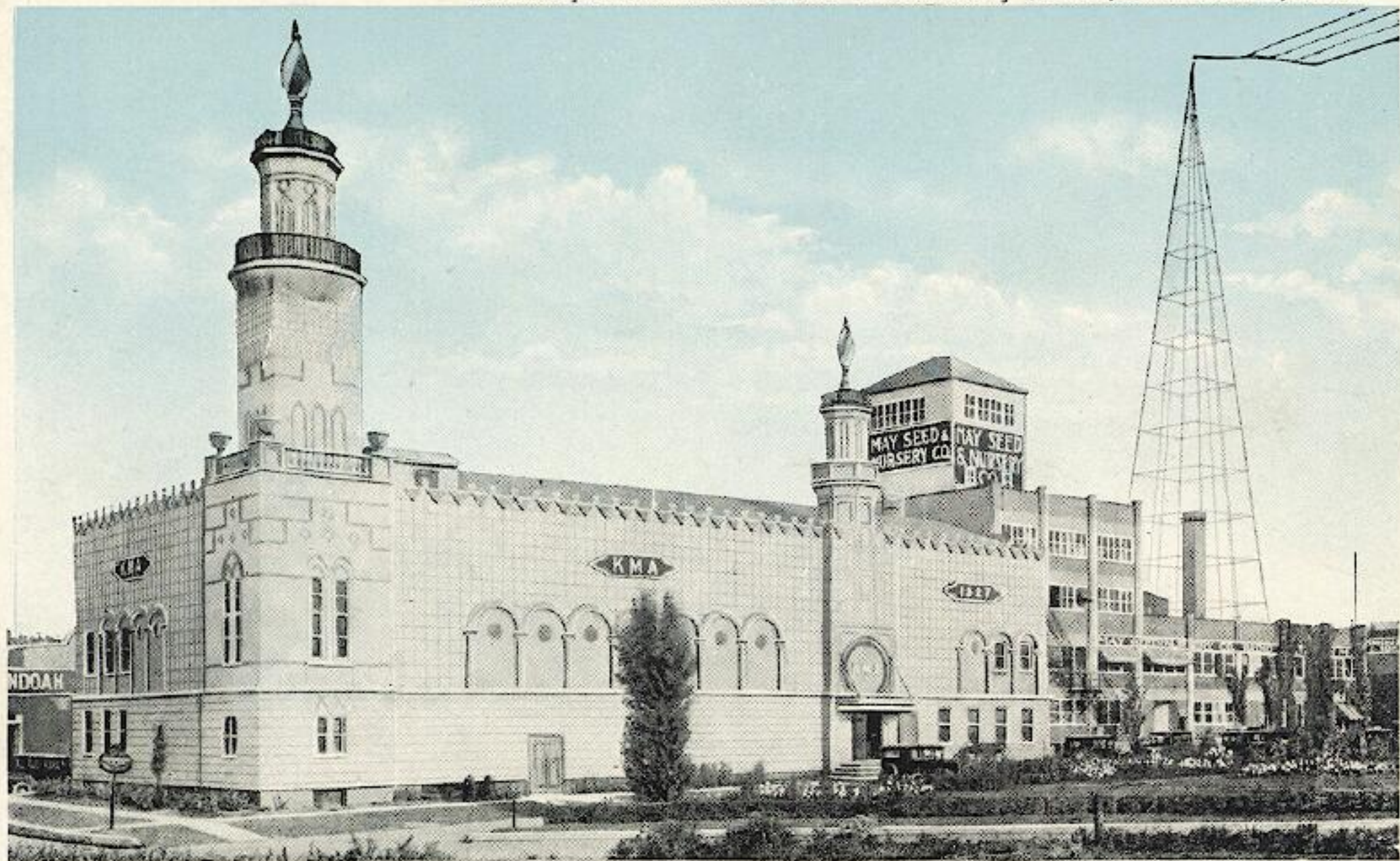


May's K. M. A. Studio & Broadcasting Station, Shenandoah, Iowa.



Earl May's K M A Studio and Broadcasting Station, Shenandoah, Iowa



MAY'S KMA STUDIO AND BROADCASTING STATION, SHENANDOAH, IOWA



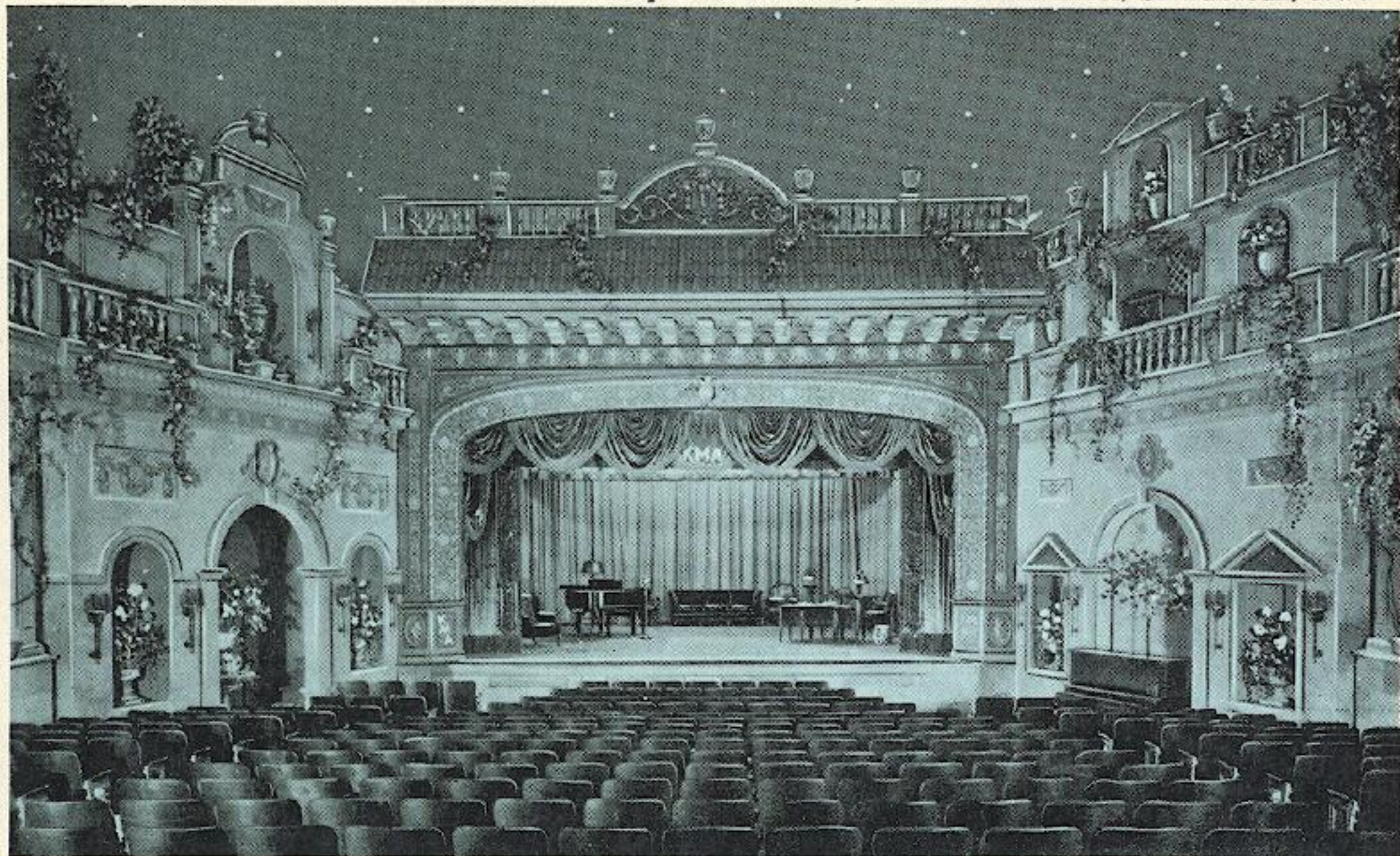
Earl May's K M A Flower Gardens and Broadcasting Station, Shenandoah, Iowa

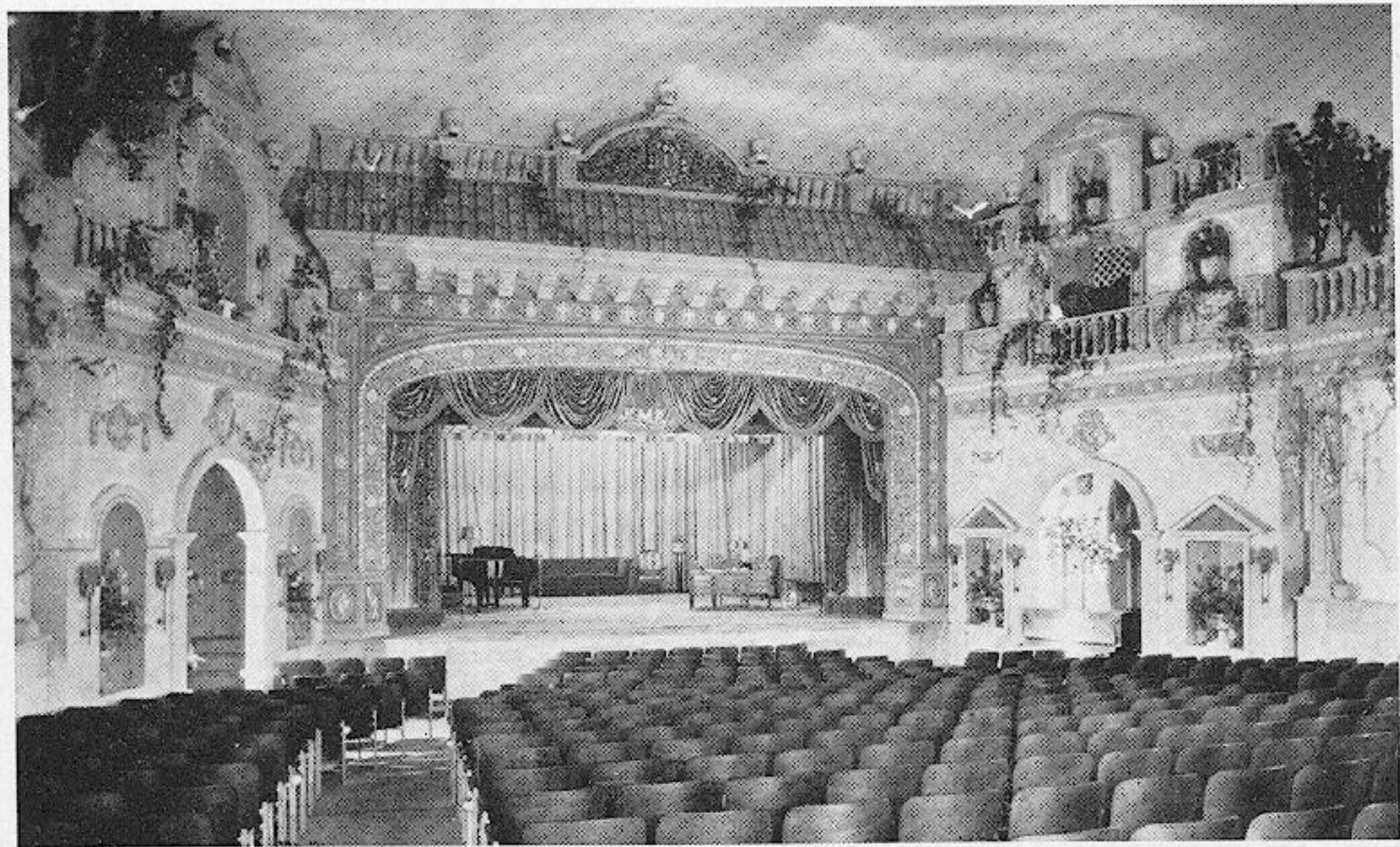


MAYFAIR AUDITORIUM, RADIO STATION K M A, SHENANDOAH, IOWA



Mayfair Auditorium, Radio Station KMA, Shenandoah, Iowa





Interior Mayfair, KMA Studio, Shenandoah, Iowa



KMA
MAYFAIR
AUDITORIUM

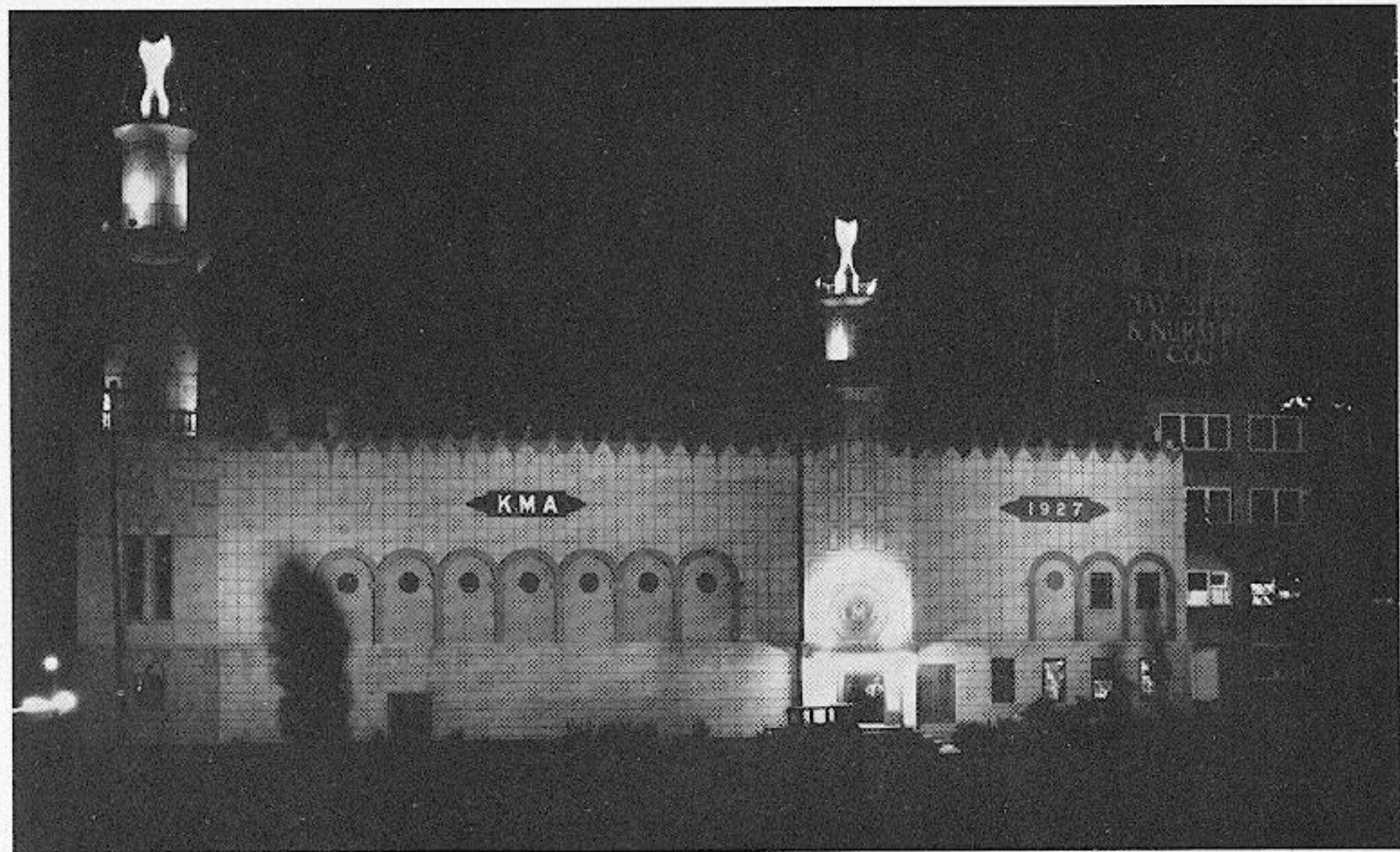
JALOPY
AUTO RACES
OCT 13-14

THUR-FRI

CAR DRIVEN
WANTS

KMA BROADCASTING STATION SHENANDOAH, IOWA

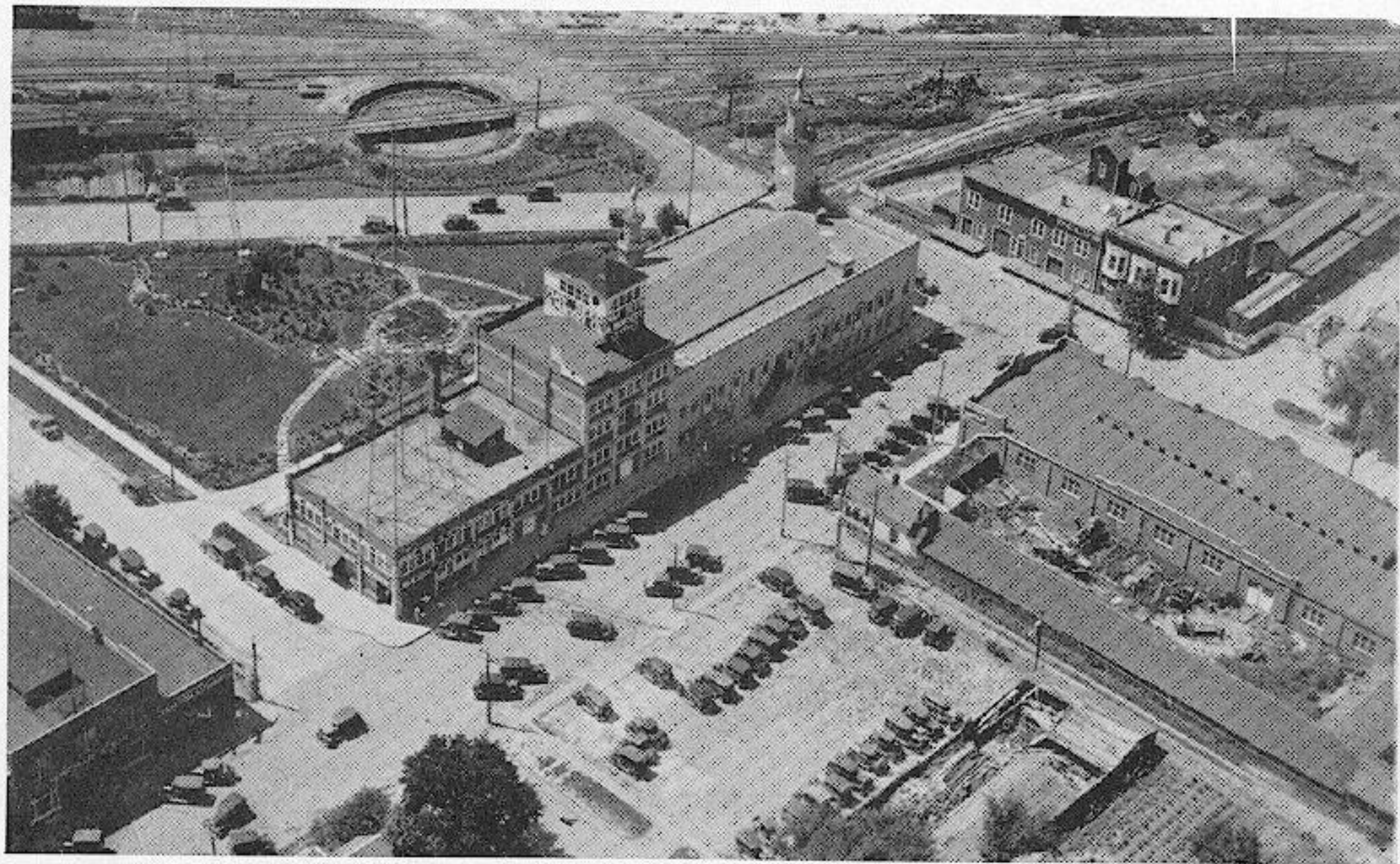
8470



Night View Mayfair, KMA Studio, Shenandoah, Iowa



Earl E. May, Official Announcer Radio Station KMA, Shenandoah, Iowa



Airplane View of Mayfair, KMA Studio, Shenandoah, Iowa

MAYFAIR

Introduced and Sung by
Prof. E. Evans Engberg from K.M.A.

Words and Music by
Dr. Leo Sturmer

Intro.

Voice

A- wel-come to you, A wel-come that's true, A
A-bove the blue sky, With clouds rol-ling by, The

place where you'll leave cares be-hind; The
beau-ty of out-doors with-in; The

twink-ling of stars, Both Ve-nus and Mars, A
tints of the brush make faint col-ors blush, All

play-house, the fai-ry land kind. Piano.
grand-eur and splen-dor a-kin.

May-fair, Piano Oh! It's

May-fair, Piano Just a place you'll

like to roam; Just a spot that seems like

home. Piano May-fair

Oh! It's May-fair, the nest for the West The

day when you're drea-ry, Just drop in where it's chee-rie, May-fair, the

flo-wer of Shen-an-do-ah. 1st mo 2nd mo