

STATION WAWZ

ZAREPHATH, NEW JERSEY

Owned and operated by the Pillar of Fire
1350 Kilocycles—222.1 Meters

BROADCASTING SCHEDULE

Sunday—6:00 to 9:00 a.m.; 11:00 a.m. to 12:30 p.m.; 3:00 to 4:30 p.m.; 7:30 to 9:00 p.m.
Monday—6:00 to 9:00 a.m.; 7:30 to 9:00 p.m.
Tuesday—7:45 to 8:45 a.m.; 12:00 to 1:30 (noon). Also Test Program, 5:00 to 6:00 a.m.
Wednesday—6:00 to 9:00 a.m.; 3:00 to 4:00 p.m.; 6:00 Children's hour; 7:30 to 9:00 p.m.
Thursday—6:00 to 9:00 a.m.; 3:00 to 5:30 p. m.; 10:30 p.m. to 12:00 midnight.
Friday—6:00 to 9:00 a.m.; 7:30 to 8:30 p.m.
Saturday—7:45 to 8:45 a.m.

The morning devotional hour program will be rendered as heretofore from 7:45 to 8:45 every morning.

Telephone, Bound Brook 223

(OVER)

You Are Invited to Visit

Zarephath, New Jersey

THE HOME OF STATION WAWZ

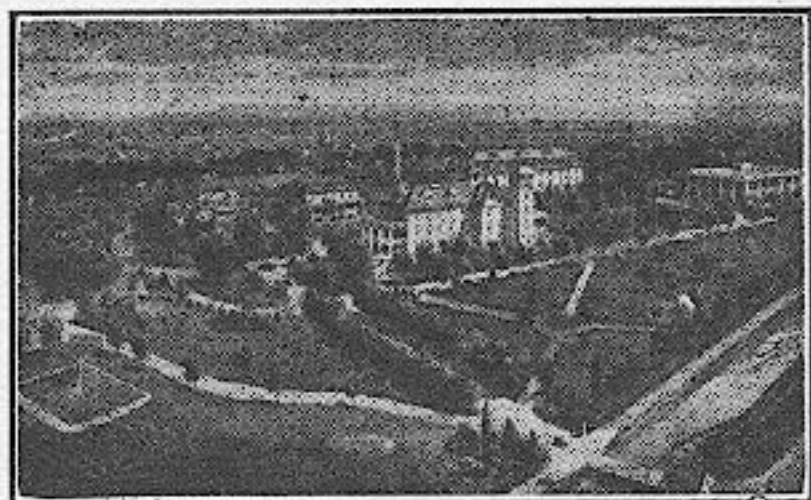


**Bishop Alma White,
A.M., D.D., Founder**

Come on Sunday and spend the day—hear Bishop Alma White. Three public church services are held—11 a.m., 3 and 7:30 p.m.—in Assembly Hall on Campus. All these services are broadcast. (See other side for complete schedule.) Old-time religion, patriotism, and current world events are discussed by the Bishop and other Pillar of Fire preachers.

Pipe Organ, Orchestra, Pillar of Fire Band.

If you cannot arrange to be present at a Sunday service, visit us during the week. Monday and Wednesday 7:30 p.m. are also public services and broadcast. You are welcome at any time.



ZAREPHATH, N. J.

National Headquarters of the Pillar of Fire

[OVER]

Greetings and Views

From MARINE STUDIO, STEEL PIER

SUMMER HEADQUARTERS

W P G

MUNICIPAL RADIO STATION

Atlantic City

DEPT. OF PUBLIC SAFETY

WILLIAM S. CUTHBERT

COMMISSIONER



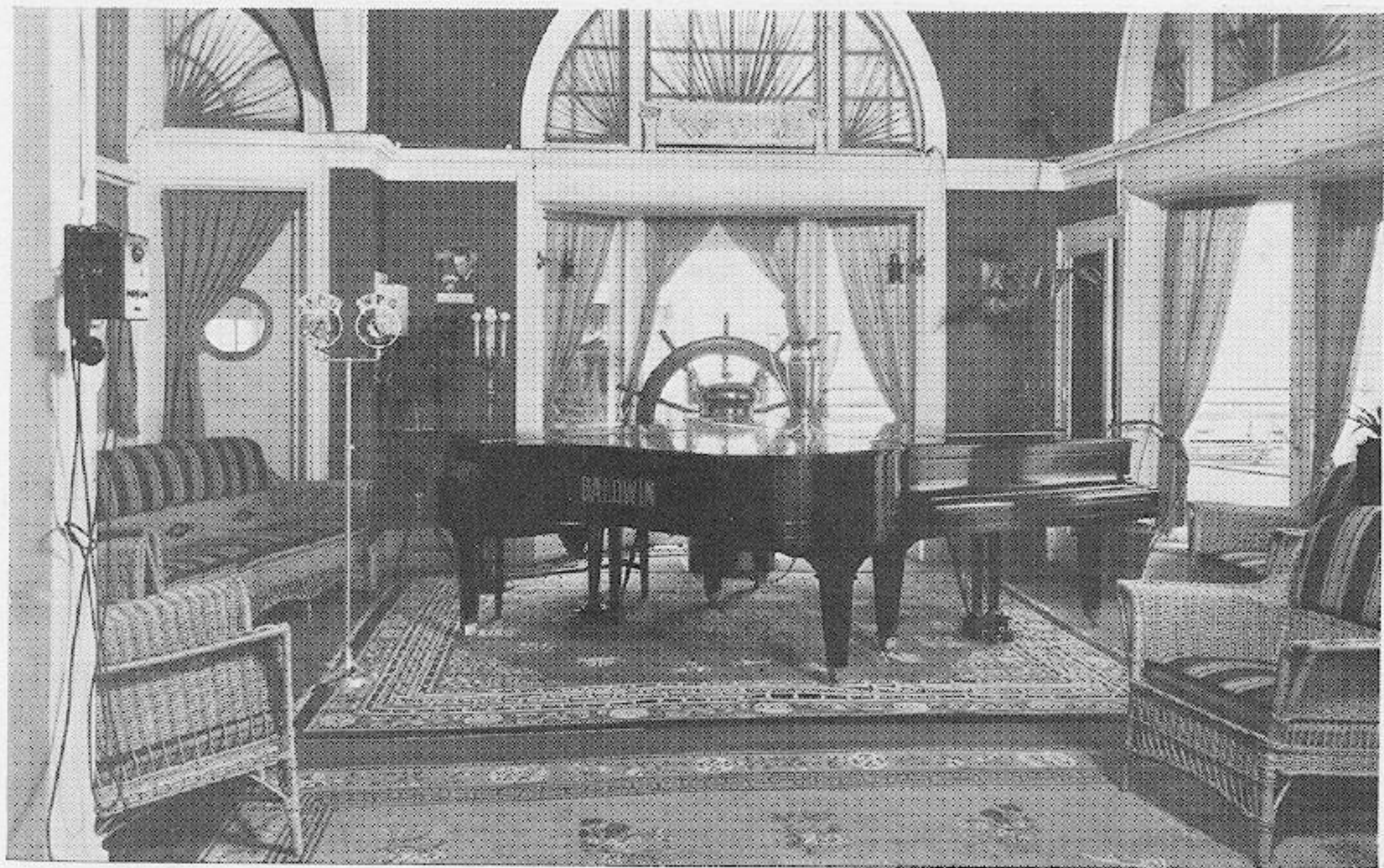
DEPT. OF RADIO

EDWIN M. SPENCE

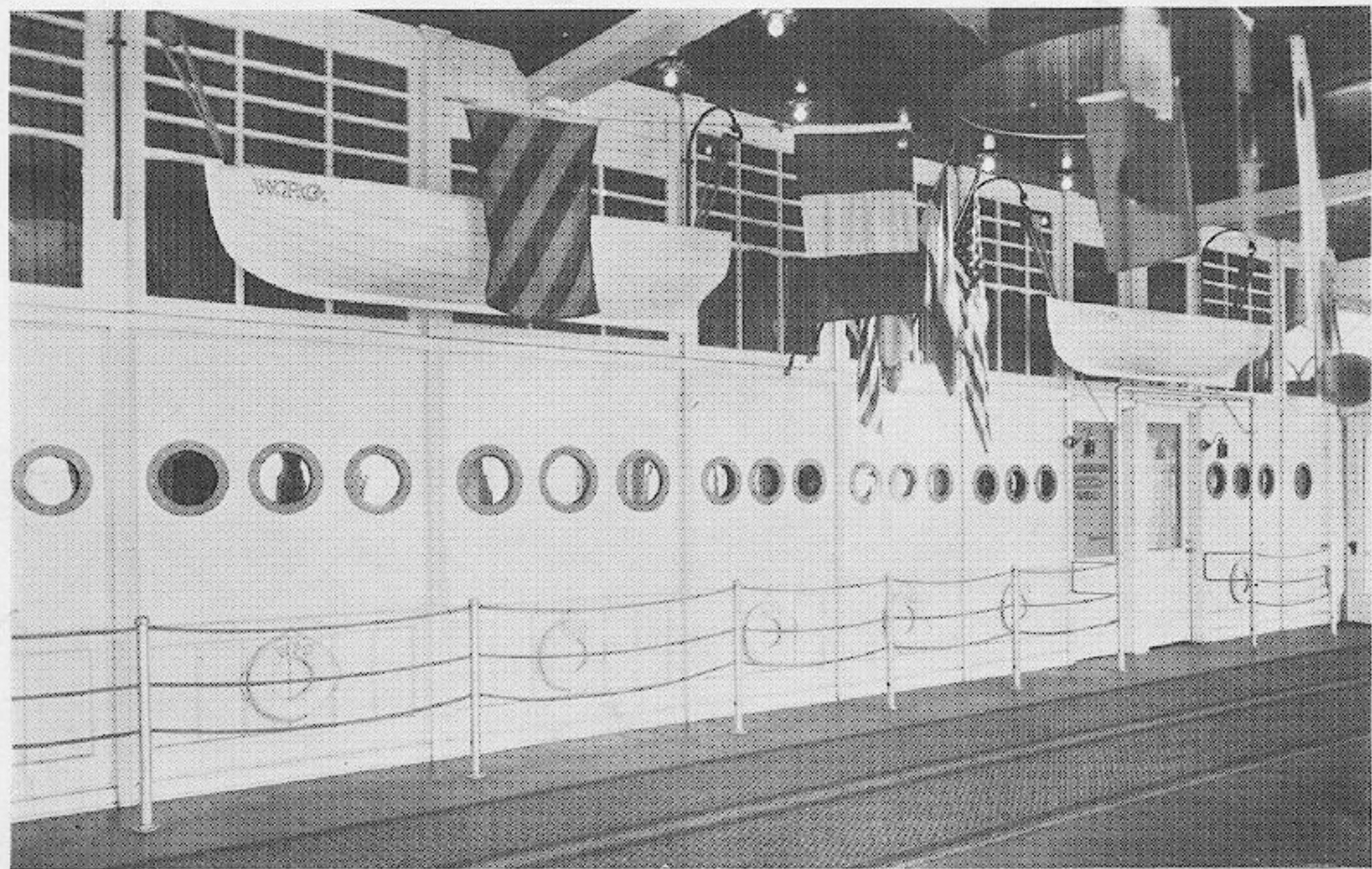
DIRECTOR



ENTRANCE TO MARINE STUDIO



INTERIOR OF MARINE STUDIO



EXTERIOR OF MARINE STUDIO

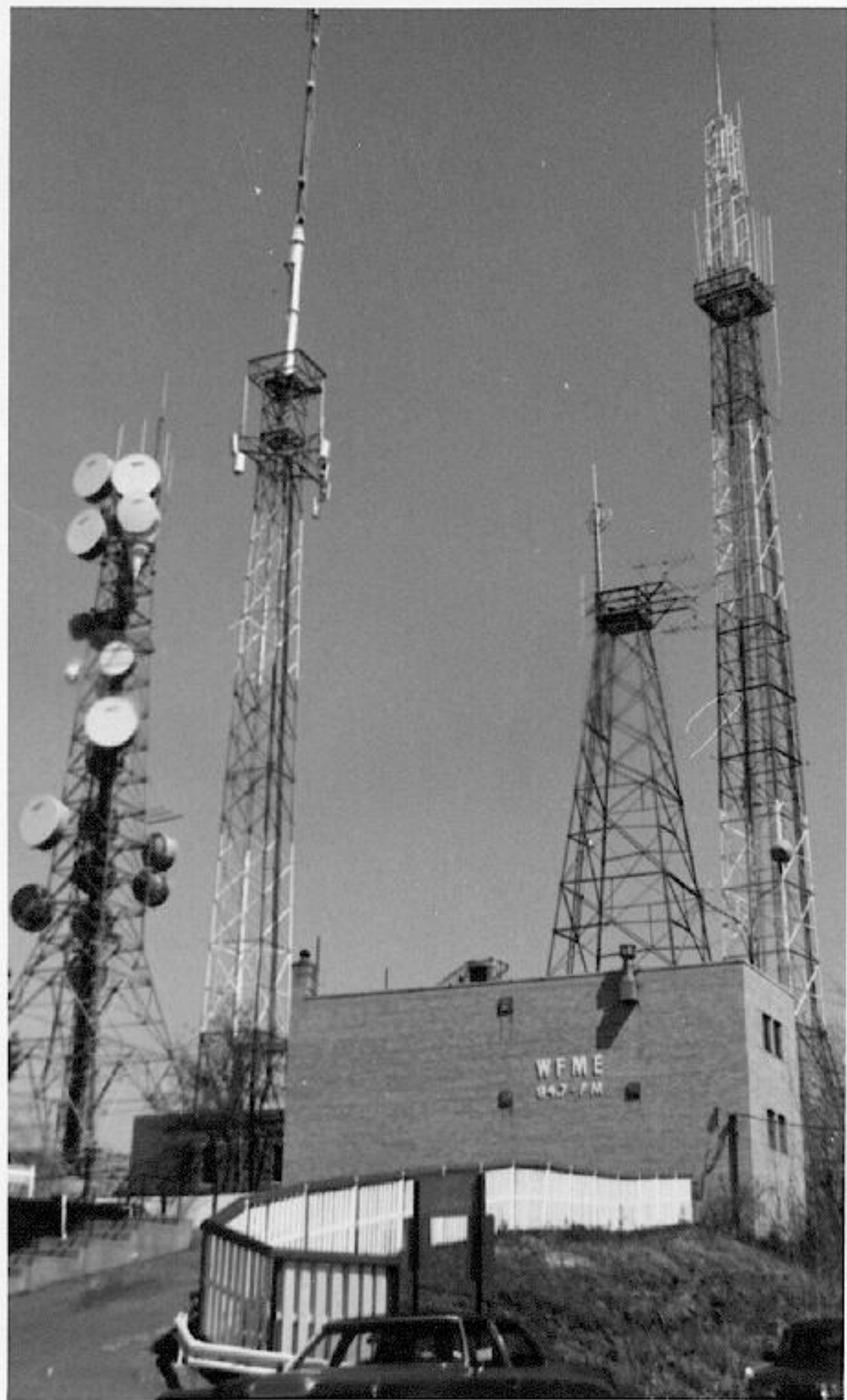


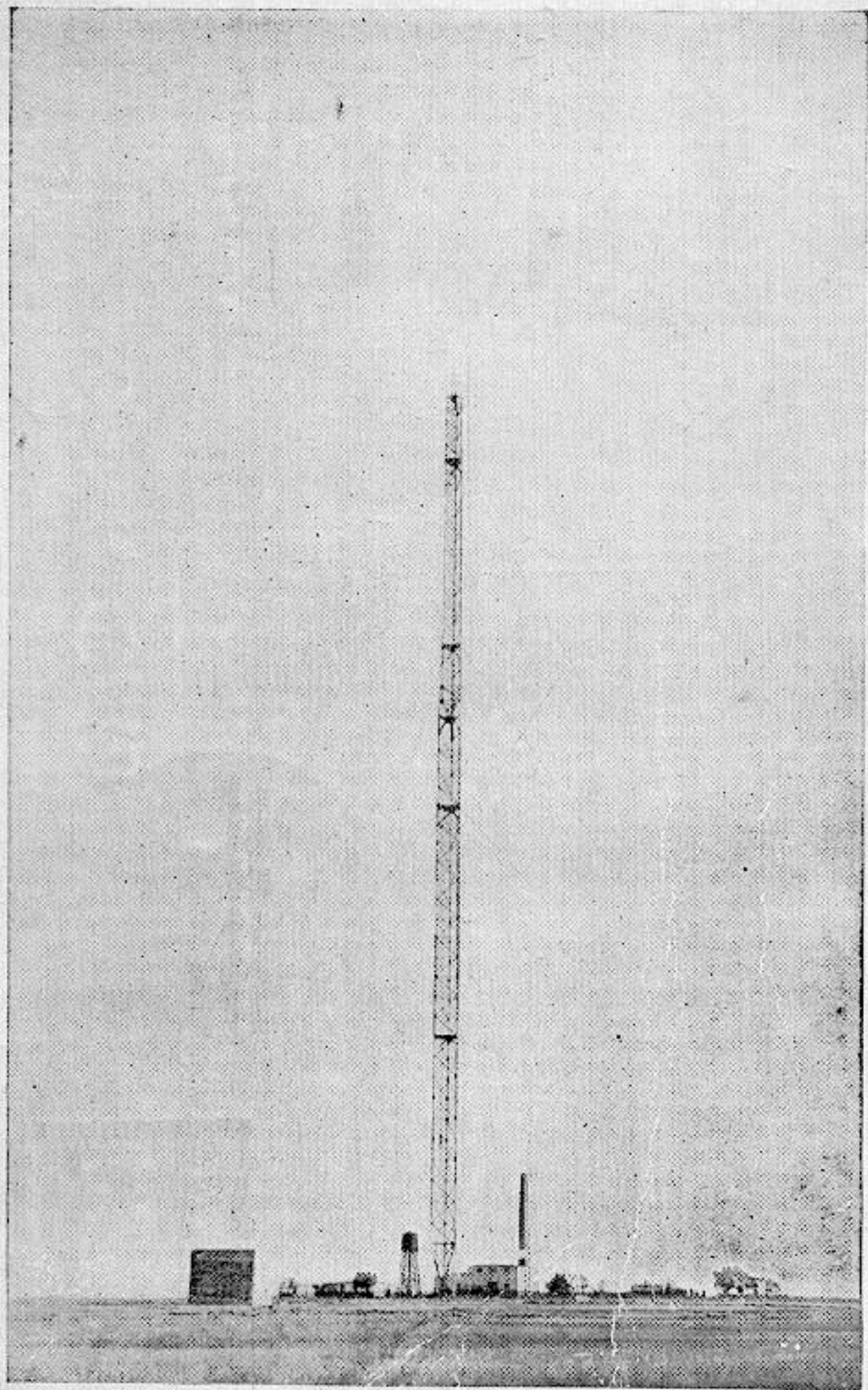
W
K
D
N

ENTRANCE
WKDN



Home of WSNJ — WSNJ-FM, Bridgeton, New Jersey
RADIO in Friendly Family Service





RADIO STATION, 860 Feet High, Tuckerton, N. J.