

CJON
CJOX
CJCN

TELEVISION

CHANNEL 6
ST. JOHN'S

CHANNEL 10
ARGENTIA

CHANNEL 4
CENTRAL NFLD.

TELEVISION BUILDING
PRINCE OF WALES STREET ST. JOHN'S NEWFOUNDLAND

February 15, 1962

Jan Tuner
Storgatan 24,
Nassjo, Sweden

Dear Jan,

We at CJON Radio and CJON-CJOX Television are always happy to receive letters from our audience, be it from the Newfoundland Province or from across the Atlantic.

We are always especially happy to hear that CJON programming is appreciated. You may like to know that England, Denmark, Scotland, Holland, Finland, Germany and Ireland are also tuning into CJON Radio broadcasts.

Again, I would like to thank you for writing.

Sincerely yours,

BOB HAGERMAN
Promotion Manager

Encl
BH/r

VOCM
CKVO
CHCM

CKCM
CKGA
CKIM

RADIO NEWFOUNDLAND

Radio Newfoundland

Telephone (709) 726-5590, Telex 016-4944, P.O. Box 8-590, St. John's, Newfoundland, A1B 3P5

Colonial
Broadcasting
System
Limited

VOCM 590
St. John's
10,000 Watts

CKVO 710
Clareville
10,000 Watts

CHCM 560
Marystown
10,000 watts

CKCM 620
Grand Falls
10,000 Watts

CKGA 730
Gander
1,000 Watts

CKIM 1240
Baie Verte
1,000 Watts

Dear DX'er;

We are pleased to verify your Reception of CKCM at 23.10 - 23.30 on MAR 16 / 80 and to thank you for your Report.


CKCM operates with a full time power of 10 KW into two 314 ft. Towers providing a directional pattern with a main lobe toward the N.E.

CKCM - CKGA and CKIM are individually programmed from 6:00-A.M. until 12 Midnight from our Studios in Grand Falls by our Staff which now numbers 18 persons.

Between Midnight and 6:00-A.M. we join a Network of all Stations of the Colonial Broadcasting System Limited, with programming originating at VOCM St. John's.

Thank you again for your Report.

Yours sincerely,



H.G. Feltham - VOIDO,
CKCM-CKGA-CKIM ENGINEERING.

HGF/lm.

VOCM
CKVO
CHCM

CKCM
CKGA
CKIM

RADIO NEWFOUNDLAND

Radio Newfoundland

Telephone (709) 726-5590, Telex 016-4944, P.O. Box 8-590, St. John's, Newfoundland, A1B 3P5

Colonial
Broadcasting
System
Limited

VOCM 590

St. John's
10,000 Watts

CKVO 710

Clareville
10,000 Watts

CHCM 560

Marystown
10,000 watts

CKCM 620

Grand Falls
10,000 Watts

CKGA 730

Gander
1,000 Watts

CKIM 1240

Baie Verte
1,000 Watts

CKCM RADIO is a sister station in the VOCM Network of the Colonial Broadcasting System. CKCM signed on the air in July 25th of 1962 with a power output of 10 thousand watts with its strongest signal north-east and south-west. Our staff numbers 19 and during part-time, we program to CKIM Baie Verte and CKGA Gander. Facility wise, and with our new building renovations near complete we are one of the most modern a.m. stations in Canada.

Our main Control Room of CKCM is the heart of operations where tape commercials, records, and live programming is fed in, and from there is sent along various line to our transmitting equipment via amplifiers and equalizers to keep the quality and level up to standard, and into the transmitter. Audio then becomes radio frequency, RF, which transmitted into the airways on a frequency, of 620 KH2 and any radio-receiver tuned to that frequency and within range will receive programming. The Control Room also feeds telephone company lines to send audio to our other stations when necessary.

Our News Room and Production Department is responsible for our up-to-date News and Sports Events, and Commercial Announcements.



VOCM

COLONIAL BROADCASTING SYSTEM LTD.

OFFICES AND STUDIOS

McBRIDE'S HILL

ST. JOHN'S, NFLD.

P. O. BOX 1-380

TELEPHONE 3148-3149

"NEWFOUNDLAND'S OWN"

10,000 WATTS

590 Kcs.

November 7th., 1961.

Mr. A.F. Rugg,
16 Lake Breeze,
Pointe Claire,
Quebec, Canada.

Dear Mr. Rugg;

Thank you for your letter of October 22nd., 1961, informing us of the reception which you received in your area.

This will confirm the reception which you stated in your letter.

Radio Station VOCM operates on 10 kw with a directional pattern at night.

Sincerely,

W.B. Williams,
Chief Engineer,
COLONIAL BROADCASTING SYSTEM LIMITED.

WBW:1k.

This is an official verification
of your reception of
RADIO STATION V.C.N.F.

"The Voice of Newfoundland."
Owned and operated by the
DOMINION BROADCASTING CO. LTD.
St. John's, Newfoundland.

Listen again for us on 1195 kilocycles and
visit us when you come to see Newfoundland.

DOMINION BROADCASTING CO., LTD.

SECRETARY TREASURER.

Mar 27th 1933

March 19, 1933.

RADIO STATION VONF.

St. John's, Newfoundland.

Owned and operated by the

DOMINION BROADCASTING CO. LTD.

Regular Broadcast Schedule, Newfoundland

time $1\frac{1}{2}$ hours later than E. S. T.

Daily 12.00 to 2.00 P.M., except Sunday
when the broadcast begins at 12.30 P.M.

Daily except Sunday, 6.00 to 8.00 P.M.,
continuing some nights until 9.00 P.M.

Sunday, 8.00 to 9.00 P.M.

The latest news concerning Newfoundland's
sealing fleet is broadcast daily at 10.00 P.M.

Greatest distance reported of the reception
of special Sunday morning DX programs----
Florida, Kentucky, Illinois.

VONF is operating at present with approxi-
mately 200 to 300 watts in the antenna on
1195 kilocycles.

The only other Newfoundland broadcasting
stations now in operation are VOWR, VOAS,
VOGY, VOKW, VOAC.

Kindly advise VONF if you have ever heard
any of these stations.

RADIO STATION VOUS
NAVY 103
FPO, NEW YORK, NEW YORK

SEPT. 5, 1961

MR. A. F. RUGG
16 LAKE BREEZE
POINTE CLAIRE, QUEBEC

Dear MR. RUGG:

Thank you very much for your letter of AUGUST 19TH concern-
ing reception of our signal. Your report is verified.

Radio Station VOUS (Voice Of the United States), is an Armed Forces
Radio Service station operating at the U. S. Naval Station, Argentia,
Newfoundland, and is staffed by enlisted personnel.

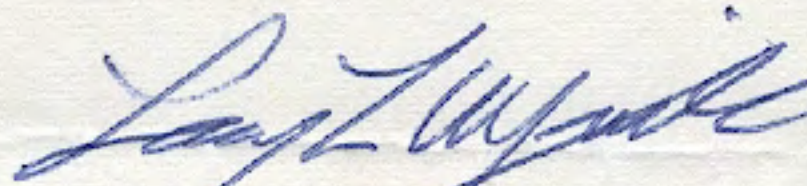
VOUS operates 24 hours daily on 1480 KC with 50 watts of power, using
a BC-250-GY Gates transmitter. Our antenna is a 150 ft. vertical
mast located approximately 15 feet above sea level about 200 yards
from the seashore.

Argentia is located 90 miles southwest of St. John's, Newfoundland.
The Naval Station surrounds the village of Argentia which is populated
by less than 100 Canadian (Newfoundland) civilians.

Of interest is the fact that Newfoundland time is $1\frac{1}{2}$ hours ahead of
Eastern time. This is accounted for by the fact that we are located
about 50 degrees west of the Greenwich Mean Line.

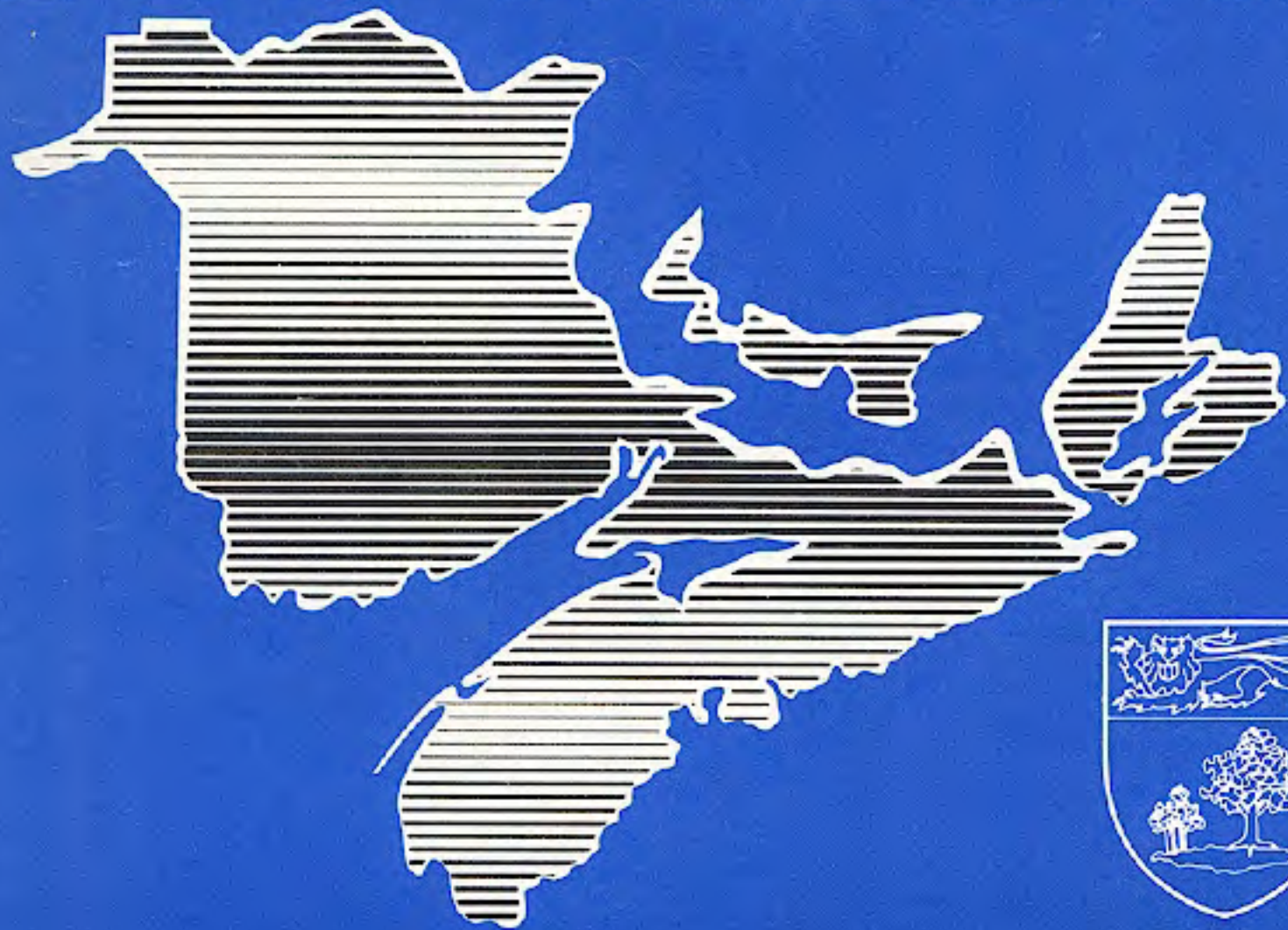
Again, thank you for your letter.

Sincerely,



LARRY L. WYRICK
PROGRAM DIRECTOR

CBC MARITIMES



The Canadian Broadcasting Corporation

is pleased to verify your reception

on 16 & 18 Feb. 19 96

of its transmissions from

Station CBA RADIO

Frequency 1070 KHz

Power 50,000 WATTS

This station is on the

CBC ENGLISH Network

Per Sylvia Roy

Date 08 March, 1996



"THE MUSIC PEOPLE"

CFBC

SAINT JOHN, N. B.

930 KHZ

10 KW DAY

5 KW NITE

WHEN IN OUR AREA,
LISTEN TO

CFBC

FM / STEREO

98.9 MHZ

E.R.P. 5600W

MARTELLO TOWER
NATIONAL HISTORIC SITE

MARTELLO TOWER

Saint John, New Brunswick, Canada
Built in 1812 on Lancaster Heights, commands a magnificent view of the whole surrounding area. The circular walls of the tower are constructed of stone 6 feet thick.

Photo by Jack Bain

This is to verify your reception of our

signal at *1:41 AM*hours

on *25/9*19*88*

during the *Al Mea*program

We hope that you'll tune us in again sometime.

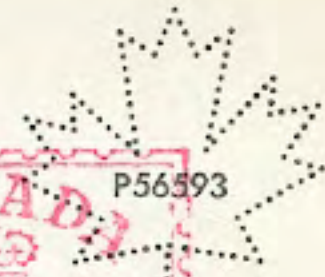
73, gud listening es gud DX!!

Gordon Miller
Gordon Miller,
Chief Engineer

THE MUSIC PEOPLE

in Saint John

.... Distributed by Saint John News Co., Ltd., Saint John, N. B.



Al Quaghen
P.O. Box 687
Albany, NY 12201
USA

Plastichrome
by COLOURPICTURE
Made in Canada

CHSJ

New 1000 Watt Broadcasting Station

SAINT JOHN, N. B.



STUDIO B.



STUDIO A

Dear Listener:—

Your letter reporting reception of our Station on
Jan. 23/46, 5.30 AM EST at Debuque Town
is acknowledged. We are pleased to advise your report
checks with the station log.

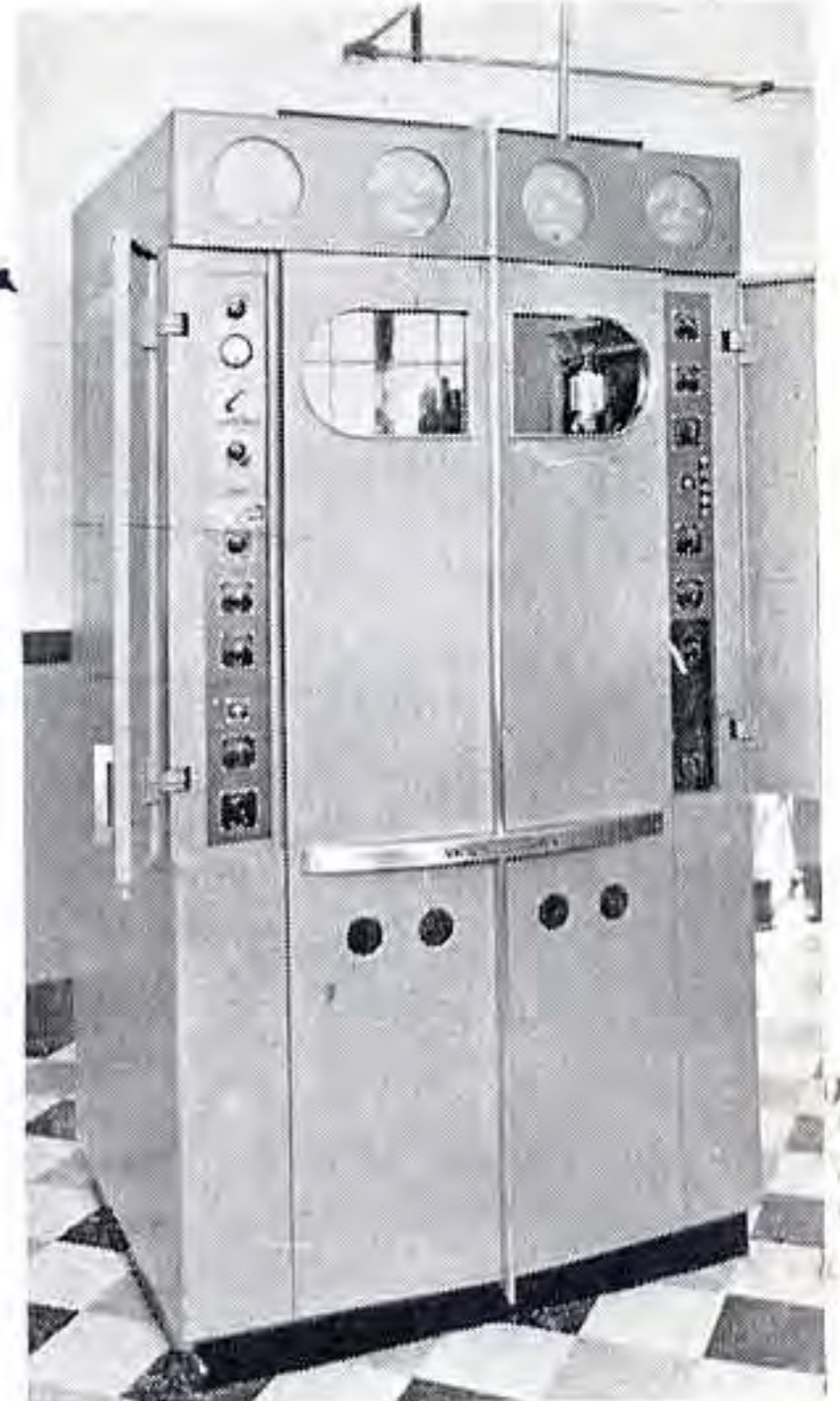
CHSJ

Per *J. G. Bishop*

NORTHERN ELECTRIC
TRANSMITTER

1000 watts; latest design, incor-
porating the "Doherty Circuit."

TRANSMITTER AND TOWER
LOCATED AT COLDBROOK,
N. B.



CONTROL ROOM

Northern Electric
speech input equip-
ment and turntables.



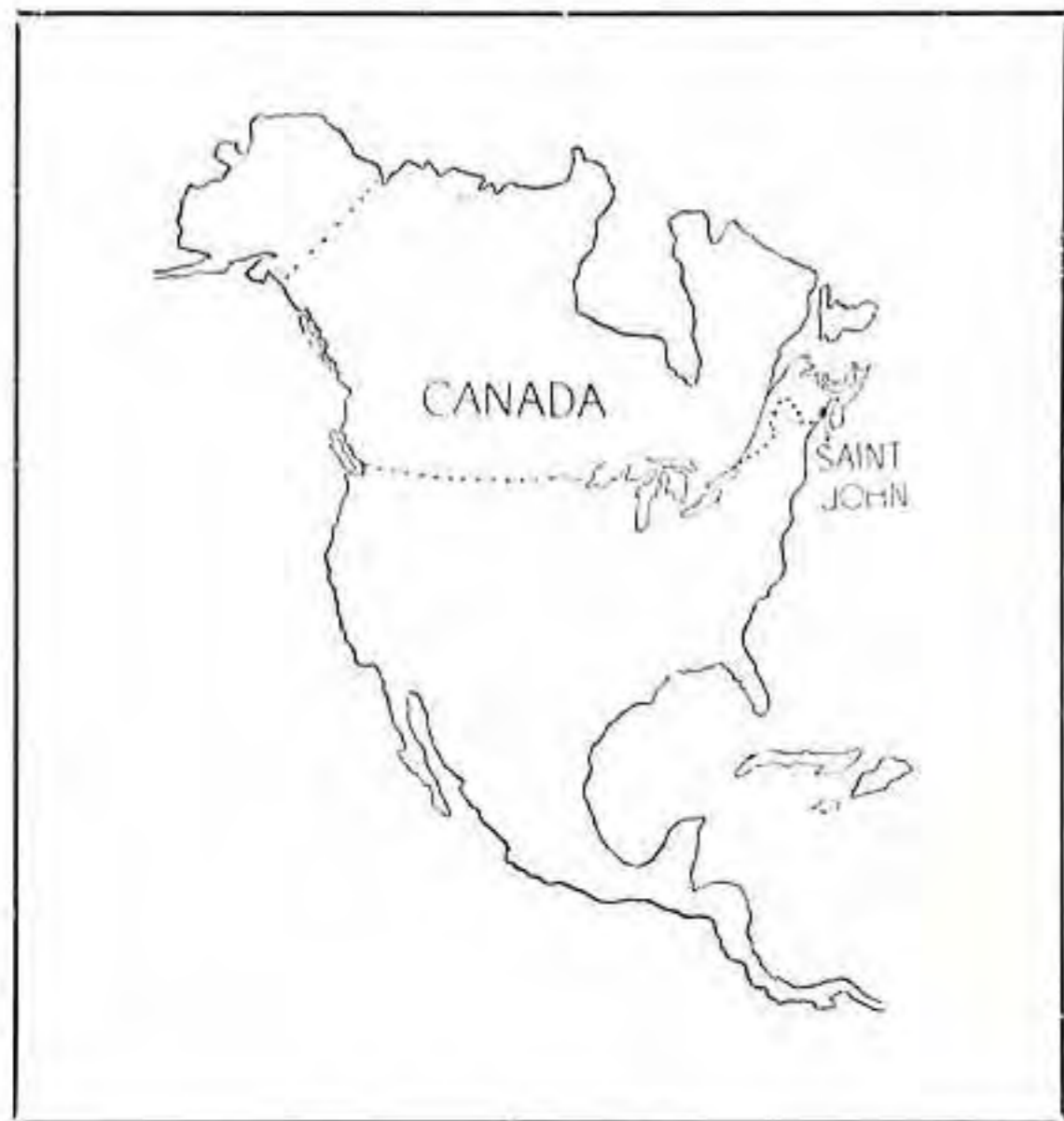
We start at 600 AM A.S.T. daily ex su.

A Souvenir from

CHSJ

1000 Watts --- Day and Night

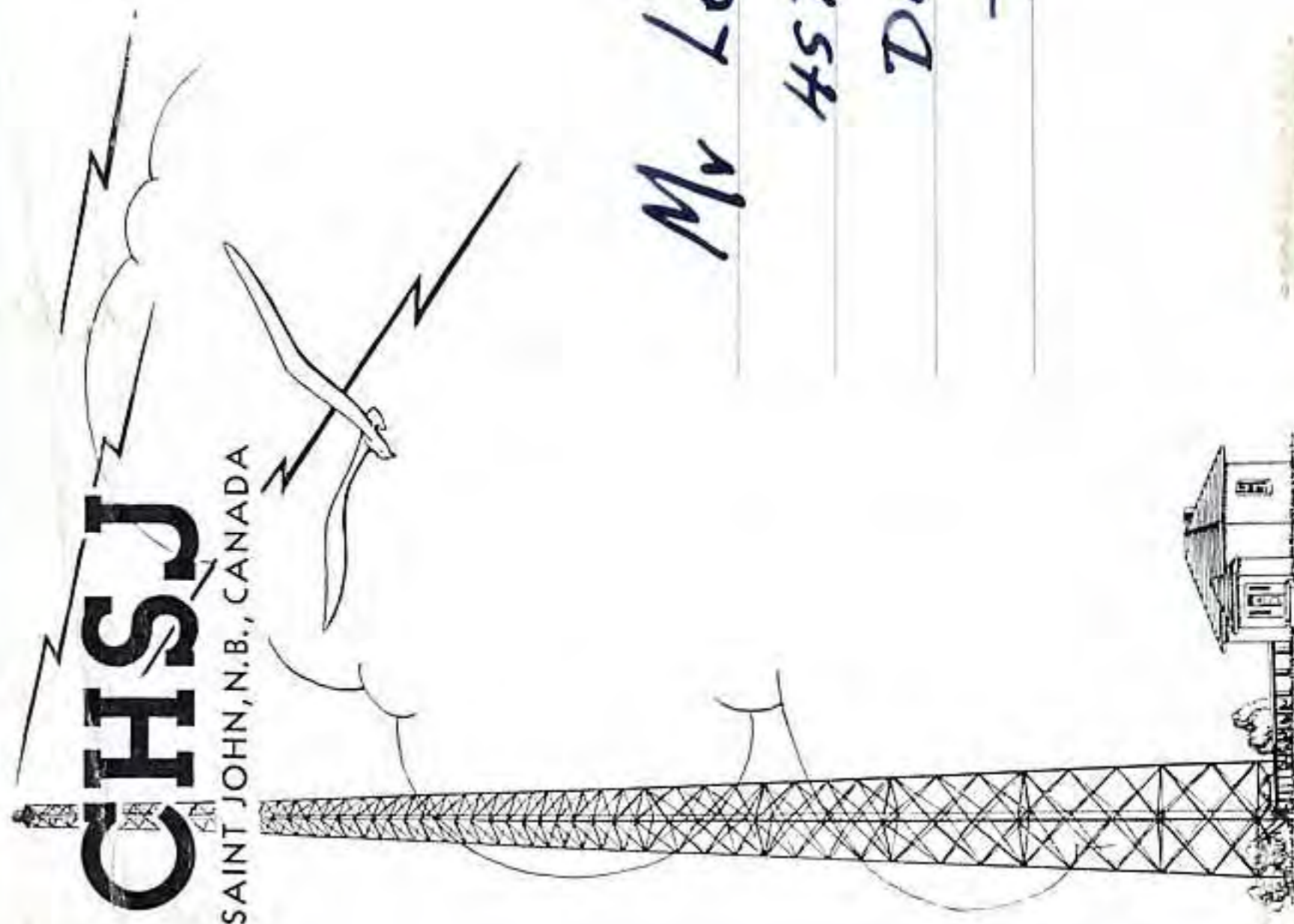
On the Air 7.30 A. M. to 12.00 P. M.



14 CHURCH STREET

Saint John, New Brunswick, Canada

1120 on the Dial



*Mr Len R. Kruse
457 Burch street
Dubuque
Iowa, U.S.A.*



2/22/73

Q S L

DEAR LISTENER:

YOUR LETTER REPORTING RECEPTION OF THIS STATION
ON 8/1/73 AT 1:46 A.M. IS ACKNOWLEDGED.

CHSJ

RADIO **1150** ON YOUR DIAL



First station in Canada's first City

10,000 WATTS DAY
5,000 WATTS NIGHT
24 HOURS OPERATION

SAINT JOHN, NEW BRUNSWICK, CANADA.

PER *T. Reid Dowling*

T. Reid Dowling, Chief Radio Engineer, Radio CHSJ

ACCESS TO WORLD MARKETS

Saint John is one of North America's great ports. The large, well-sheltered harbour, with its ultra-modern concrete wharves and fireproof metal transit sheds, is open twelve months of the year. It is linked with every continent by steamship services.

Canada's two trans-continental railways move passengers and freight in and out of busy Saint John. The waterfront, on which excellent sites have been set aside for industries, is equipped with facilities which assure the quickest and most economical handling of all types of cargo.

Saint John is closer by rail to the main sources of freight origin and freight destination in Canada and the United States than any other Canadian Atlantic port and offers manufacturers easy access to domestic as well as world markets.

REVERSING FALLS RAPIDS

At Saint John the tremendous rise and fall of the water level amazes visitors. The rise and fall of the tide here is 28 feet.

And at Saint John too, the world famous Reversing Falls Rapids display their interesting capacities. Running not precipitously but nonetheless definitely, the falls flow in one direction as the powerful tide from the bay flows inward, forcing the waters of the Saint John River uphill.

Then, as the tide retreats, the falls reverse their direction and flow the opposite way, through the Saint John Harbour and into the Bay of Fundy.

POST CARD



Mr. John Sgrulletta

8 North Street

BEDFORD HILLS,

New York 10507, U.S.A.

Dear Jan,

We are pleased to confirm your reception of
CJCJ Radio, on January 14, 1987, from 2300 to
2400 Sweden time.

73,
Amelia

CJCJ



"FRISKY"

"Serving The Fiddlehead Country"
Woodstock, New Brunswick
Canada

Q
S
L

CKCW RADIO

11 SEP 51
1960

MONCTON, N. B.
CANADA



Charlottetown
P. E. I.

NEW BRUNSWICK

0.3MV/M

DAYTIME

10,000 WATTS AT 1220 KC'S

Moncton

NIGHTIME

0.5MV/M

NON-DIRECTIONAL: SUNRISE TO SUNSET

DIRECTIONAL: SUNSET TO SUNRISE

Cape
Tormentine

Amherst

Sussex

NOVA SCOTIA

HOURS OF OPERATION; MONDAY to FRIDAY 6-1
SATURDAY: 6-2 — SUNDAY: 8-12

10,000

5000 WATTS

1140 KCS

RADIO STATION C B I

SYDNEY, N. S., CANADA

OWNED AND OPERATED BY

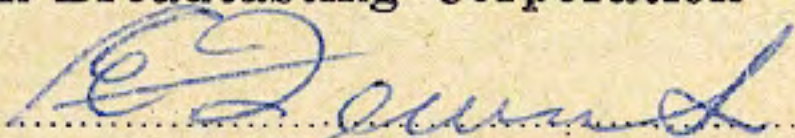
CANADIAN BROADCASTING CORP.

Thank you for your report on our program, your times and details check with our log and we are pleased to verify your reception of C B I.

Yours truly,

Canadian Broadcasting Corporation

Per


Tech. Supervisor

THE MARITIME BROADCASTING COMPANY LIMITED
OPERATING

"The Key Station of the Maritimes"



C H N S

AND SHORT WAVE EXPERIMENTAL STATION V E 9 H X—6110 KC—49.1 Meters
LOCATED AT 'TOP THE LORD NELSON HOTEL
HALIFAX, NOVA SCOTIA, Canada

500 WATTS, 1050 KILOCYCLES, 285 METERS.

WM. C. BORRETT, DIRECTOR.

THE FOLLOWING IS OUR BROADCAST SCHEDULE:—

- ** 10.30 A. M.—Opening Programs
 - ** 11.00 A. M.—Women's Interest Feature.
 - ** 12.00 A. M.—Studio Program
 - ** 12.30 P. M.—Herald News Items.
 - ** 12.40 P. M.—Popular Program.
 - ** 1.00 P. M.—Stock Market Quotation.
Weather Report, Schedule and Correct Time.
 - *** 2.00 P. M.—School Broadcast Auspices Department of Education.
 - **** 6.00 - 12.00 P. M.—Musical Programs, News Stocks, Church Services,
Talks, Sporting Events, Etc.
- **Daily except Sunday. ***Fridays only. ****Daily.



We will be pleased to send you an Ekko Stamp, if you will forward ten cents.
C. H. N. S. is associated with "The Halifax Herald" and "The Halifax Mail"
"Two of Canada's Great Newspapers."

C H N S is the Eastern Terminus of the Trans-Canada Chain.

HALIFAX, NOVA SCOTIA.
CHNS - 960 KC. CHNX - 6130 KC
10,000 WATTS. 500 WATTS.

— 0 —

This will confirm your report of reception of

..... *CHNS*, *960*kc.

Date *August 19,*, 196*1.*

Time *2:00 - 3:06 AM AST*

Operating Schedule:
24 hours a day



THE OLD TOWN CLOCK
operating since 1803
at the Halifax Citadel.

Thanking you for your interest.

Lillian Reid

CANADIAN
RADIO BROADCASTING STATION

 C J L S 

OWNED AND OPERATED BY LAURIE L. SMITH

TRANSMITTER AND MAIN STUDIO
GRAND HOTEL, YARMOUTH, N. S.

We take great pleasure in verifying your reception of C J L S Yarmouth,
Nova Scotia, at time and date of March 22nd 1936
as given in your report.

Please accept our thanks for your interest, and this station would be
pleased to receive further reports regarding your reception of transmission
from C J L S at any future date.

Radio Station C J L S Yarmouth, Nova Scotia


.....

1000 K. C.

TRANSMITTER: R. C. A. VICTOR BTA—IL

1000 WATTS

CKBW

This will acknowledge receipt of your verification for

Our Broadcast of date MARCH 29/54 Heard at hours 4:00 AM. To 4:30 AM.

BRIDGEWATER, NOVA SCOTIA

P.S.T. A.S.T.
SERVES THE SOUTH SHORE

1,000 KC. Transmitter: R. C. A. Victor BTA-10-U 10,000 Watts

CKBW

Serving The Bluenose Country

Bridgewater, Nova Scotia

CANADA

THIS WILL ACKNOWLEDGE RECEIPT
OF YOUR VERIFICATION OF OUR

BROADCAST OF DATE Jan. 7/72

TO **CKBW** **TOWN AND COUNTRY**



RADIO HEARD AT HOURS 11:30 PM AST

(weather forecast, music)

REMARKS: We have reception reports from 7 Canadian provinces, 39 states of the USA and 13 Countries incl:-
England, Scotland, Ireland, Norway, Sweden, Finland, Denmark, Holland, France, Germany and the Azores.
States include-California, Washington, Texas, Florida.
Many thanks for your report and tape, all the best from the CKBW staff and from Nova Scotia.

DOUGLAS B. HIRTLE
CHIEF ENGINEER

Douglas B. Hirtle



METER
COMPTON
566498



To Jan Tuner,

Granrisvägen 15A,

702 35 ÖREBRO,

SWEDEN.



COLCHESTER BROADCASTING Co., LTD.

J. A. MANNING, PRESIDENT AND MANAGING DIRECTOR

7 PLEASANT STREET
TRURO, NOVA SCOTIA

840 Prince St

Mr. Tom Farmerie,
634 Malibran Drive,
Pittsburg 37, Pa

Dear Sir:

This letter will confirm your report of reception of our broadcast.

We receive letters from distant listeners from time to time, and are always interested in these reports.

Thank you very much for writing.

Yours very truly

A handwritten signature in blue ink that reads "E. S. Bernasconi".

E. S. Bernasconi
Chief Engineer



MEMBER



STATION V.A.S. GLACEBAY N.S,
CANADA,

VERIFIES YOUR RECEPTION

ON Dec 26th 1935

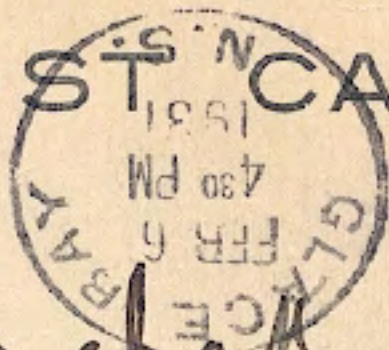
VAS PER

JK

THANK YOU



CANADA POST CARD



THE POSTMAN
- YOUR BEST
SALESMAN USE

M. Kalnechak Esq

1701 E 3rd St

Bethlehem

Pa

USA