

Station 2GY

Jerry Berg,
jsberg@rcn.com

The New Transmitting Station of "Radio Broadcast"

FOR the past three months, the Laboratory of RADIO BROADCAST has had a short wave transmitter in operation. The beginnings have been modest, for the antenna is supplied by a fifty-watt tube, operating on a plate voltage of 1100. A wavelength of 40 meters is now in use, although in the near future the station will also be operating on the lower waves at present permitted in the amateur communication band. Although various methods of plate supply have been tried, the transmitter is now operating from a bank of B batteries, and a good deal of experiment is in progress with the problems involved.

Since the call letters of the RADIO BROADCAST station, 2GY, were assigned, a large number of cards from amateurs who have heard our signals have been received. Since 2GY is listed in the current Government list of United States amateur call letters, practically all of the cards announcing the successful hearing of 2GY have been sent to Mr. F. X. Hayes, 162 East 82nd Street, New York, the former possessor of that call.

Amateurs who hear our station are asked to address their cards to the Director of the Laboratory, RADIO BROADCAST Magazine, Garden City, New York. We are very anxious to have complete reports from any listening amateur who will be good enough to send them to us. An acknowledgement will be sent in reply.

The transmitter in its present experimental stage, has a dependable daylight range of between eight hundred and a thousand miles. Communication has been established with many radio amateurs who are located within a thousand-mile radius of Garden City.

A number of interesting experiments in short wave transmission are in progress, and in later numbers of this magazine they will be described. It need not be thought by the broadcast listener that transmitting experiments of this sort are uninteresting to him. On the contrary, some of the most fascinating experiments being conducted in radio to-day lie in the field of short waves. Many of the problems to be solved in this work are very similar to those in the broadcast field.

Amateur station 2GY in Garden City (Long Island), New York, came on the air circa June 1925, part of the "laboratory" of *Radio Broadcast* magazine.

Radio Broadcast was published from May 1922 to April 1930 by Doubleday, Page & Co. (Doubleday, Doran after January 1928). The station's inauguration was announced in the September 1925 issue (p. 650, left).

2GY's very nice QSL-card (from 1927) featured an exterior view of the station and its impressive-looking antenna system. 2GY did not receive extensive coverage in the magazine, although its equipment and operation did get an occasional mention.

POSTAL CARD



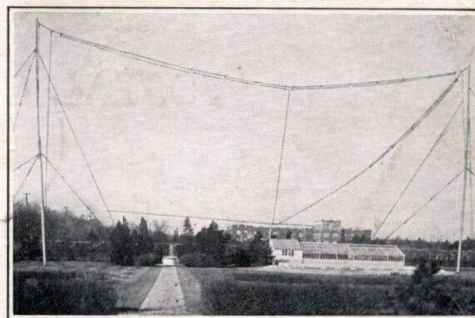
This card comes from the short wave experimental station which is a section of the Laboratory of *Radio Broadcast* magazine, one of the publications of Doubleday, Page & Company, at Garden City, Long Island.

EXPERIMENTAL STATION

2 GY

Operated by
RADIO BROADCAST Magazine
Doubleday, Page & Company
Publishers
Garden City New York

RADIO 9BHZ
Input 85 watts "H" tube
ORS



Wkd. { 10/10/27
Hrd. {

QSB d.c.
QRK R-56

This station is operated as a part of the technical activities of *Radio Broadcast*, a magazine devoted to advancing the best interests of radio in all its branches.

Opr.
Hervey