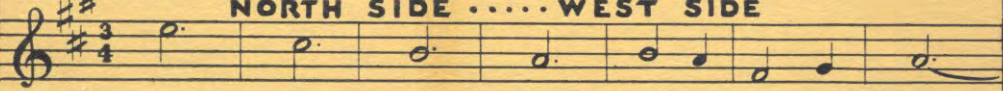


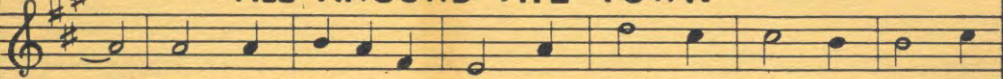
MUSIC



NORTH SIDE ..... WEST SIDE



ALL AROUND THE TOWN



EAST SIDE

SOUTH SIDE



THE COUNTRY

UP AND DOWN



INGLIS

"The Key Station of the Maritimes"

CHNS  
1934 YEAR BOOK 1934

OPERA

MUSIC NEWS DRAMA

SPORTS COMEDY





# Why are these papers so widely read?

Why is their circulation greater than that of all other daily papers combined, in Nova Scotia?

Why is their circulation more than twice as large as the next paper?

**Because** their foremost aim is one of **Service**—to their readers, to their province, to the Dominion; the same spirit of service which prompted them to become associated with the equipping and operating of Radio Station CHNS, and its constant improvement.

**THE HALIFAX HERALD  
AND  
THE HALIFAX MAIL**





PHOTO BY CLIMO

**Station Director**

**WILLIAM C. BORRETT**

# MOTIVE

**T**HE first edition of the "CHNS YEAR BOOK," was in the nature of an experiment, it remaining to be proven whether or not radio listeners needed or desired such a publication. The faith of the publishers was amply justified, and the second edition followed in the train of hundreds of inquiries to the effect, "When will CHNS issue another book like last year?" And so, this the third issue, follows as a matter of course and may be interpreted as indicating that the "CHNS YEAR BOOK" may be regarded as an institution.

Believing that today Canadian radio activities enter more largely into the listening hours of our people, proper recognition is accorded this fact by the large proportion of its pages devoted to broadcasting, in the Dominion. Because Canadian broadcasting, as we understand the term today, is scarcely more than a year old, due regard must be held for the fact that it is still in the development stage. Changes in the interests of listeners will occur as may be dictated by the circumstances, and it is believed that all with the best wishes for the cause of Canadian radio will think constructively and sympathetically co-operate with those charged with the responsibility of shaping our radio destinies.

The Maritime Broadcasting Company Limited, operators of CHNS, dedicate this booklet to the members of its audience on whose behalf the station's programs are conducted. It is hoped it may serve as a slight but tangible evidence of the interest and friendliness which the owners and staff feel towards the radio public.

*Managing Director.*

*The* **MARITIME BROADCASTING COMPANY. Ltd**  
 OPERATING RADIO STATION  
**CHNS**  
 HALIFAX - NOVA SCOTIA



# OBSERVATIONS



JOHN REDMOND  
*Assistant to Director and  
Announcer*

CHNS has passed its eighth birthday, and measured by radio standards, this is far from being an immature age. While not necessary to trace its growth in detail in this brief résumé, perhaps it would not be out of the way to refer to certain salient points likely to appeal to those who have evinced an interest in the station's development.

It has ever been the policy of this station to maintain its equipment up to a modern standard. Thousands of dollars have been expended during the past year to ensure that recent improvements in the technical fields might be reflected in the essential points of mechanical operation of the station. While such terms as "modulation" and "crystal control" may convey nothing to the layman, they are matters of paramount importance in the transmitting end of radio. And so when the occasional interruption occurs in your evening's reception it may possibly be due to the adjustment of some recently-installed piece of apparatus intended for the ultimate improvement of transmission.

Perhaps, too, it is not fully appreciated by the public generally that all programs broadcast by CHNS on its regular channel are simultaneously transmitted by the station's short-wave transmitter, VE9HX. This assures vastly increased coverage to artists and sponsors of their efforts, it being generally acknowledged that reception of short-wave signals over many thousands of miles is common-place.

And speaking of short-wave, calls to mind the fact that CHNS is, as far as we have been able to determine, the first station on the North American continent to incorporate in its published schedule a regular scale of rebroadcast of programs originating in Great Britain. These have achieved a tremendous popularity with a large number of listeners. The apparatus to pick up these transmissions is custom-built to the Station Director's specifications and installed according to requirements determined by a protracted period of exhaustive tests.

While any commercial broadcasting station depends upon sponsored features for its economic existence, any station which purports to function in the best interests of its listeners realizes that it has a responsibility to the community of which it forms a part. CHNS claims to belong to this group. It therefore becomes necessary to assume the expense of presenting programs which not only produce no revenue, but in very fact involve the expenditure of large sums for talent and line charges. As evidence of this CHNS may point to such representative broadcasts as, "Harbor Lights," "The World In Review," and many others. The broadcasting of church services, rated in many cities on a cold, commercial basis, are conducted by CHNS at barely the actual cost to the station. CHNS feels it has a duty in this connection, and discharges it.



Many and varied are the uses to which a broadcasting station is put in the course of a year. While primarily a dispenser of entertainment, CHNS has been called upon to locate lost children, stolen automobiles, missing persons, establish contact with vessels at sea and sundry other functions. Within the limits of the law, and subject to the emergency of the cause it has always been our aim to answer the calls for help. Thousands of dollars for worthy charitable causes have been raised through CHNS appeals to which listeners have responded so nobly and generously. Just another rôle assumed by your community radio station.

Naturally the ideal of pleasing everyone who listens is a goal, only, and one which will never be reached. The tendency to adverse criticism is ever-present; the urge to express approval is not—when it comes to the matter of radio programs. And therein lies the bane of a station director's life. If he presents grand opera through his station, those without an appreciation for that type of music accuse him of catering to the elite. Conversely, dance-bands and hockey matches draw forth nothing but condemnation from those who insist that chamber music should have preference over all else. And so it goes. It should be borne in mind that the nearest approach to the perfect radio program schedule is the balanced one. That which recognizes the right of all groups to their favorite radio bill of fare in turn. Might it be suggested, then, that the next time you hear us broadcasting something which incurs your displeasure, that there are those who place it first. Otherwise it would not be on the air.

The original staff which served CHNS on its opening night, away back in 1926, is still "on the job." They are sincerely desirous of giving of their best to the end that your radio station may contribute materially to your listening enjoyment. We have often felt that the ideal of which we spoke above, might be more nearly approached if listeners could have a clearer understanding of the problems associated with the conduct of a broadcasting station. If they might better appreciate all that goes on behind the scenes, rather than feel the mere touching of a button or the throwing of a switch, opens a magic box whence pours an endless supply of entertainment or education.

Make a point of dropping in some evening and familiarize yourself with us. We will be happy to see you, and believe that you will find much to interest you.



# The Canadian Radio Broadcasting Commission



*Canadian Radio Commission. Left to right—THOMAS MAHER, Vice-Chairman; COLONEL STEEL, Commissioner; COLONEL LANDRY, Secretary; HECTOR CHARLESWORTH, Chairman.*

## A Survey of Canadian Radio Progress

### Incorporating Activities of the Canadian Radio Commission

**T**HE past year has undoubtedly been the most progressive in the decade of Canadian radio history. It marked the first unified and comprehensive effort to coordinate and strengthen radio broadcasting in Canada and to establish national broadcasting on a firm basis. This progress has been due to the zealous manner in which the Canadian Radio Broadcasting Commission has undertaken the responsible task delegated to it.

The Commission was appointed in October, 1932. The Chairman, Mr. Hector Charlesworth, and Vice-Chairman, Mr. Thomas Maher, accepted office at that time and commenced preliminary work on the organization of the Commission, but official action had to be deferred until the return of the third Commis-

sioner, Lieutenant-Colonel W. Arthur Steel, from the Madrid Radiotelegraph Conference which he attended as a representative of the Canadian Government. The Board commenced to function officially on the 18th of January, 1933, just eighteen months ago, and in this short time has been successful in establishing a system of national and regional broadcasting on a definite schedule.

Actuated only by their anxiety to give their best in this great field of public service, all radio interests have worked unsparingly for the advancement of radio in Canada.

Lest there be any misunderstanding about the authority of the Commission, it should be observed that the Commission has been appointed to administer the Canadian Radio





ALEXANDER CHUHALDIN, celebrated Russian violinist, now a resident of Toronto, the guiding genius of "Symphonic Strings."



ANLON YOUNG, featured artist on the Commission's program "Modulations."

Broadcasting Act passed unanimously by Parliament in 1932. The duties, powers and responsibilities of the Commission are defined in this Act, and by this legislation the Commission is not only empowered to carry on the business of broadcasting but is also specifically instructed to regulate and control all broadcasting in Canada. The Act follows closely the recommendations of the special Parliamentary Committee appointed during the 1932 session to consider the radio problem.

It should scarcely be necessary to remind radio listeners that when the Commission accepted office it had no facilities for broadcasting, and no staff. The Commission was entirely a new body created to administer the first Radio Broadcasting Act enacted by the Dominion Parliament.

The necessary departments of the Commission had to be organized and a small but experienced and competent staff had to be secured to undertake the work of the Commission. The whole organization of the Commission had to be carefully considered and planned, a preliminary but extensive survey had to be made of privately operated radio stations and coverage throughout Canada, and Canadian talent had to be sought in all parts of the country with a view to organizing a program schedule of a high standard and sufficiently varied to meet all tastes.

The eager expectation of Canadian listeners for an improvement in Canadian broadcasting led the Commission to inaugurate two hours per week of national broadcasting about the first of February, 1933. This temporary measure was made possible by reserving time on a network of stations and by leasing transmission lines for this limited schedule.

Stations at Moncton, Ottawa and Vancouver were acquired from the Canadian National Railways in March, and subsequently Commission stations were established at Toronto and Montreal. The station at Moncton was discontinued so that now the Commission has four stations, CRCM, Montreal; CRCO, Ottawa; CRCT, Toronto; and CRCV, Vancouver, and to complete the basic national network reserves time on a selected list of stations from coast to coast. Commission programs are made available also to certain other stations, but the use of the programs remains optional with these particular stations.

By May, 1933, a definite schedule of national and regional programs was organized and inaugurated by the Commission, and since that time the schedule has comprised national and regional broadcasting every day. The inauguration of such a schedule within five months from the inception of the Commission was scarcely anticipated even by those intimately associated with the business of broadcasting, in view of the extent of the undertaking





CECIL A. LANDRY,  
Chief Operator

---

and the many problems that had to be carefully considered.

The standard of programs broadcast by the Commission has definitely dismissed any doubt about Canadian talent. These programs indicate impressively that there is no dearth of radio talent in Canada and that Canadian artists command recognition in the international field. The fact that many of these programs are broadcast throughout the United States by the N.B.C. and C.B.S. in exchange for programs sponsored by these systems is sufficient evidence that Canadian programs are not considered inferior to those developed in that country.

The exchange of programs with these systems in the United States is but the commencement of an extensive plan for the exchange of programs with Great Britain and other parts of the Empire, as well as with the various European countries.

Special events of national or international interest have been broadcast by the Commission. Through the courtesy of the "Canadian Press," news bulletins are broadcast twice daily. The Commission has co-operated with various educational societies in sponsoring series of special talks on a wide range of subjects, and just recently has inaugurated a series of talks on world events by leading newspaper editors in Canada.

Through national radio Canada has been provided with a regular schedule of Canadian radio entertainment, an opportunity has been afforded for the encouragement and development of Canadian artists and musical and dramatic associations; and perhaps most important from the standpoint of national life, parochialism and provincialism are disappearing. Programs originating in one province and heard in the others, from east to west, are tending to unite people in all parts of the country more closely and to develop a spirit of understanding and fraternity that is all-important in the development of our national life.

Immediate action was taken by the Commission to regulate and control all broadcasting in Canada, in accordance with Section 8 of the Act. Rules and regulations to govern broadcasting were carefully prepared, and on the approval of the Governor-General-in-Council came into effective operation on April 1, 1933.

---



BILLIE BELL, well known on the Commission's Toronto programs, particularly "Hour of Gaiety and Romance."





LIONEL L. SHATFORD,  
Program Director and Announcer

These regulations require, "That all broadcast facilities in Canada, whether privately or publicly owned, shall be so designed, installed and operated as to take advantage of the latest scientific developments and improvements in physical plant and the methods of operation of broadcast systems, so that the maximum service area will be obtained for each station, and the best possible service rendered to Canadian listeners."

Other regulations provide for the control of programs and news broadcasts.

Since the promulgation of these regulations the Commission has reduced advertising to the limit set by the Act, which provides that the proportion of advertising that is to be authorized shall not exceed five per cent of any program period except when permission has been granted

by the Commission. In administering this regulation the Commission has had the effective co-operation not only of Canadian radio stations, but of the broadcasting systems of the United States insofar as it applies to the programs of these systems broadcast by Canadian stations.

Through co-operation by the Dominion Department of Health, careful supervision is exercised over programs containing advertisements for patent medicines. Continuities for such advertisements must be submitted to the Commission and are forwarded to the Department of Health to be checked and censored. In this way an important measure of protection is given radio listeners who might be influenced by unsubstantiated statements.

It should also be noted that the Commission has taken a strong stand in censoring the broadcast of speeches that might be considered contentious, or contrary to existing legislation.

Thus in its first year the Commission has not only established a system of national broadcasting, but has initiated effective measures of control of all broadcasting in Canada. The main objective is to provide Canadian radio listeners with the best programs and service consistent with available facilities which, it is hoped, may be gradually extended.

## Men's Suits, Winter Overcoats, Topcoats

Clothing Accessories, Hats, Shoes, Furnishings, Water-proof Clothing, Motor Rugs, Baggage and Novelties.

HALIFAX' OWN STORE SINCE 1891







ELLIOT CAMPBELL,  
*Relief Operator*

---

Although definite progress has been made, national radio is still in its early stages. The foundation has been laid, however, for a system that may grow to full maturity in several years and in which Canadian listeners may take pride.

It is but natural in any undertaking, especially one as national in its scope as the Canadian Radio Commission and its associated network of stations, that operations over a period of twelve months would show up certain points which could be amended to the benefit of all concerned.

With this idea in mind, another special committee of the House of Commons sat during the last session, held twenty meetings and heard thirty-seven witnesses connected with this important activity in the life of Canadians and their report, adopted by the House of Commons, stated that it had been made apparent, after viewing the evidence, that the establishing of national broadcasting in Canada presents many difficulties, for the correction of which time, experience, and large expenditure of public money will be necessary.

The following recommendations were submitted to the Government by the committee:—

(1) "That, in view of evidence, the Government should, during the recess, consider the advisability of amending the Act, with a view to securing better broadcasting facilities throughout the Dominion. In the opinion of your Committee, radio broadcasting could best be conducted by a general manager.

(2) "That the collection of the fees for radio licenses should be simplified, and that one licence fee should cover only one receiving set.

(3) "That the provision of the Act dealing with advertising should be more liberally interpreted.

(4) "That a greater use of electrical transcriptions be permitted.

---



WISHART CAMPBELL, one of Canada's most popular Baritone voices, often heard from Toronto.





GORDON ARTHUR,  
Assistant Operator

(5) "That, pending nationalization of all stations, greater co-operation should be established between privately owned stations and the Commission.

(6) "That Chapter 35 of the Statutes of Canada for 1933, which expired on April 3, 1934, be renewed until March 31, 1935."

## Separate Corporation for Programs

Commenting on a suggestion made to the House of Commons Committee on Radio that a subsidiary corporation be formed to prepare and distribute broadcasting programs, Mr. Hector Charlesworth, Chairman of the Cana-

dian Radio Broadcasting Commission, has issued the following statement:—

"During the past few months there has been a good deal of discussion in the Press, and generally throughout the country, with regard to the position of the Broadcasting Commission on the question of control and operation of radio in Canada.

"Very soon after coming into office the Commission found that its position was a very difficult one, in view of the fact that it was called upon to administer the regulations and, at the same time, to be in the business of producing and distributing radio programs throughout the country.

"In view of this experience the Radio Broadcasting Commission has found it advisable this year to recommend that regulation and operation should be separated; that the Radio Commission should be left in charge of the regulation of broadcasting, but that a Corporation, to be owned by the Commission, should be formed and be responsible for the preparation and distribution of programs throughout the country."

"THE EXCLUSIVE LEATHER HOUSE"

Established 1876

Telephone B-6962

**KELLYS LIMITED**  
116-118 Granville Street - HALIFAX

Importers of English Luggage, Leather  
Goods & Riding Equipment

FACTORY OPERATED BY SKILLED WORKMEN

"IF IT'S LEATHER, WE HAVE IT OR CAN MAKE IT"





CARO LAMOUREUX, popular soprano of "Under the Bridges of Paris."

Station	City	Kilo-cycles
CFCO	Chatham, Ont. ....	1210
CFCH	North Bay, Ont. ....	930
CKPR	Fort William, Ont. ....	780
CKY*	Winnipeg, Man. ....	960
CKX	Brandon, Man. ....	1450
CJRW	Fleming, Sask. ....	540
CJGX	Yorkton, Sask. ....	630
CHWC*	Regina, Sask. ....	1010
CKCK*	Regina, Sask. ....	1010
CHAB	Moose Jaw, Sask. ....	1200
CJRM	Moose Jaw, Sask. ....	540
CFQC*	Saskatoon, Sask. ....	840
CFCN*	Calgary, Alta. ....	1030
CJCA*	Edmonton, Alta. ....	730
CKUA	Edmonton, Alta. ....	580
CJOC	Lethbridge, Alta. ....	1230
CFJC	Kamloops, B.C. ....	880
CKOV	Kelowna, B.C. ....	630
CHWK	Chilliwack, B.C. ....	780
CRCV*	Vancouver, B.C. ....	1100

\*Basic stations on Commission Network. With the other stations the use of Commission programs is optional; all programs are made available to them but they use them at their discretion.

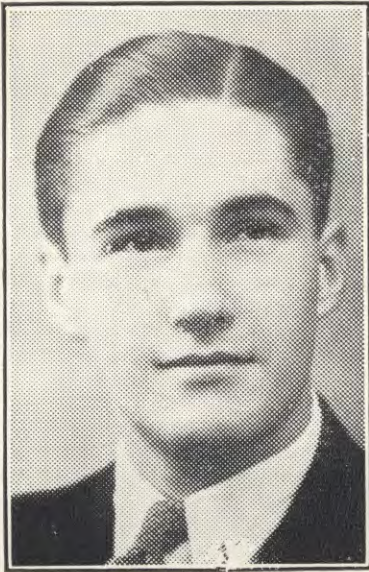
## Stations Using Commission Programs

Station	City	Kilo-cycles
CJCB	Sydney, N.S. ....	1240
CHNS*	Halifax, N.S. ....	930
CFCY*	Charlottetown, P.E.I. ....	630
CHGS	Summerside, P.E.I. ....	1500
CFNB*	Fredericton, N.B. ....	550
CFBO*	Saint John, N.B. ....	1120
CHNC	New Carlisle, P.Q. ....	1210
CRCS*	Chicoutimi, P.Q. ....	950
CHRC*	Quebec, P.Q. ....	930
CFCF	Montreal, P.Q. ....	600
CRCM	Montreal, P.Q. ....	910
CKCH	Hull, P.Q. ....	1210
CRCO*	Ottawa, Ont. ....	880
CRCT*	Toronto, Ont. ....	840
CKNC*	Toronto, Ont. ....	1420
CKOC	Hamilton, Ont. ....	1120
CKPC	Preston, Ont. ....	930
CFPL*	London, Ont. ....	730



OLGA PAVLOVA, of "Seville Fair" from Winnipeg.





GENTLEMAN JIM, whose private name is R. E. Guy, of Winnipeg. He is studying to be a lawyer.

In New York City our special representative is Joseph McGillvra at 485 Madison Avenue and in Toronto, Iola Plaxton, at 707 Kent Building, Yonge St.

These special representatives are doing good work on behalf of CHNS and advertising Nova Scotia in every possible way.




---



---

## Special Representatives

In former years a number of the larger commercial programs broadcast through CHNS have come from Montreal, Toronto and New York, which has necessitated many business trips by the Station Director to interview the sales and general managers of the sponsors and the head offices of the advertising agencies.

In order to facilitate negotiations between sponsors and agencies and the station, CHNS has appointed special representatives who are on the ground so to speak, and who have all details regarding the area which we serve.



STANLEY MAXTED, one of the best known radio artists in Canada, who sings on Royal York Hotel and Commission features, from Toronto.





MISS MARJORIE PAYNE, leader of the orchestra so favorably known to the radio audience and heard in former years from the Lord Nelson Hotel and now as a Canadian Radio Commission feature.

other organization, the usual uniform, when appearing at our Lord Nelson Studio. The Station Director will inform you when such occasions are scheduled.

Owing to limited reception room accommodation, it is requested that you bring no visitors other than your escort.

No smoking is permitted in the studios.

All wraps, instrument cases and other impedimenta must be left in the cloak room before entering the studio.

Please refrain from talking in the studio unless addressed by the announcer.

All vocalists should bring either two copies of the selection they will sing, or must have memorized the words. *Vocalists must not read from the piano copy.*

Stand in the position before the microphone indicated by the Announcer. Step back slightly from the microphone when singing high powerful notes and move toward the microphone for soft passages.

Do not turn away from the microphone when singing.

Do not hold sheet music between your face and the microphone.

Do not rustle sheet music turning the pages.

## Important Facts for Radio Artists

Broadcasting is becoming more and more an art in itself. Recognizing this, all artists who appear on radio programs should welcome any suggestion which will add to the effectiveness of their presentation before the microphone. It is our desire to assist our artists in making their numbers a success and also to establish a standard of performance for Canadian broadcasting.

To do this, the closest co-operation is necessary between the artists and the station staff. May we request, therefore, that when appearing on our programs, you accept the suggestions contained herein.

Please be on hand ten minutes before the program is due to start.

It is requested that on formal occasions and special programs all artists wear evening dress (Tuxedo for men), or, in the case of a band or



JULIUS SILVERMAN, well-known and popular violinist featured on programs both at CHNS and with Miss Payne for the Canadian Radio Commission.





*His Worship, MAYOR CRAGG, Halifax, under whose auspices the series of programs entitled "Our Civic Government" has been meeting with approval.*

Do not unnaturally force your voice. Sing easily and naturally.

If you are a piano soloist, use the pedals as little as possible, without interfering with your expression.

*The Studio Signals*—A Red light indicates that the studio microphone is open and every sound in the studio will be transmitted; therefore, do not talk or make any unnecessary noise when this light is on.

Commence your number at a signal from the announcer.

After advising us of the numbers you have selected for the program, they should not be changed. *This is imperative.*

All artists appearing before our microphones must be ready to pass tests beforehand. We are always glad to hear of new artists and to give them tests and, if suitable and convenient, to use their services or to recommend them for broadcasting.

CHNS has the latest Northern Speech Input Equipment and Dynamic Microphones and Crystal Controlled High Percentage Modulation Transmitter. Follow the above instructions and your broadcast will be faithfully reproduced.

## Good Nova Scotian Apples For Good Nova Scotians

The world's best varieties of dessert and cooking apples are grown right here in Nova Scotia.

They are famous the world over for their flavour.

They are available from September to April in barrels, boxes, hampers and cartons.

By buying only in packages bearing special Provincial Government Apple Trade Mark Labels, you are assured of the highest quality.

If at any time you experience difficulty in purchasing good Nova Scotian apples for your own use or as gifts for your friends, it shall be appreciated if you will 'phone or write the Marketing Division of this Department.

DEPARTMENT  
OF  
AGRICULTURE  
HALIFAX

John A. McDonald  
Minister



# A Few Notes on Some of the Commission's Best Programs

## Information Supplied by Commission's Publicity Department

*Hour of Gaiety and Romance.*—Orchestra of 27 musicians directed by Percy Faith from Toronto on Mondays. Artists include Stanley Maxted, Billie Bell, Wishart Campbell and Jean Haig. Each program sees an outstanding artist before the microphone in one or two celebrated numbers.

*Symphonic Strings* (formerly "Singing Strings")—Alexander Chuhaldin directing a 28-piece orchestra at Toronto over a CRC and CBS combined network to Canada and the United States. This program has been occupying a Saturday period, but on Friday, November 9, will commence a new schedule of Friday half-hours.

*One Hour With You.*—Senor Guiseppe Agostini batons an orchestra of 21 musicians for this program originating at Montreal featuring the justly famous Lyric Trio and Robert Choquette, young Canadian poet, on Wednesday evenings.

*Under the Bridges of Paris*—This Montreal broadcast is heard Saturdays with an 18-piece orchestra led by jolly Allan McIver. Caro Lamoureux, soprano, and Ludovic Huot, tenor, are starred.

*Gems from the Lyric Stage*—Lionel Daunais, Anna Malenfant, Georges Dufresne, Romeo Jobin, Jeanne Mignolet, and Louise Chartier display their vocal talents in this Montreal

half-hour heard Fridays. Henri Miro directs the accompanying orchestra of 25 musicians.

*Operetta and Musical Comedy Alternate.*—Toronto and Montreal share the 10 p.m. Sunday coast-to-coast period alternately. Montreal's program consists of a tabloid operetta in which such well known artists as Marthe Lapointe and Lionel Daunais take part. Eighteen musicians under Albert Roberval supply the music. Toronto presents a tabloid musical comedy, with Geoffrey Waddington leading an 18-piece orchestra.

*Don Pedro and His Gypsies.*—A Vancouver original presenting Mackenzie Mawer and his orchestra on Mondays. Alternates from the same city with "Moonlight on the Pacific," a popular mandolin orchestra, George Calangis, leader.

*Vancouver Saturday Night Frolic.*—A concert band conducted by Calvin Winter, and featuring Pacific Coast soloists.

*Seville Fair.*—Leon Zuckert originating his famous South American dance music from Winnipeg, Tuesdays.

*Musical Cavalcade.*—Musical comedy extracts as played by Al Preston and his orchestra from Edmonton on Mondays.

*Twilight Echoes from the Fireside*—Brother and sister (Helen Morton, soprano, William Morton, tenor) supporting W. Knight Wilson, violinist, and Cyril Hampshire, pianist and



DOROTHY M. SIGGINS,  
Secretary to Director



EDITH F. NICKERSON,  
Program Department





FORBES THRASHER, Manager of the Lord Nelson Hotel,  
whose co-operation has been much appreciated.

organist, in a half-hour broadcast Sundays from Regina. This program is probably the only one in existence to proceed entirely without continuity, other than an opening introduction. One melody simply fades into the next.

*Gypsy Rhapsody.*—Jack Dale, sensational Ukranian tenor heard Fridays from Regina, assisted by W. Knight Wilson's string group.

*Foothill Echoes.* — Calgary's contribution Thursdays. Orchestral and vocal program under the direction of Jean de Rimonoczy.

*Acadian Serenade, Halifax.* — Orchestral program under the direction of Marjorie Payne and featuring Julius Silverman, violinist. Heard Saturdays.

*Cotter's Saturday Night.* — A Scottish program featuring well-known songs and music, originating in Sydney, Cape Breton.

*Funday Fantasy*—A Wednesday evening presentation, with Bruce Holder and his orchestra, from Saint John, New Brunswick.

## JULIUS SILVERMAN



### *The Music House With a Double Service!*

Buy Your Musical Instruments  
from us on the EASIEST OF  
TERMS.

Join our school of music and  
learn to play any instrument in  
ONLY 20 LESSONS.

Latest Popular Sheet Music.  
New and Used Pianos.  
Sporting Goods.  
Souvenirs.  
Novelties and Gifts.

## JULIUS SILVERMAN

MUSIC HOUSE  
SCHOOL OF MUSIC

36 George Street

HALIFAX, N. S.

Tel. B-9400





R. J. RANKIN,  
News Broadcaster

FRANK DOYLE,  
News Broadcaster



## Newfoundland's Radio Stations

Information Supplied to Us by  
Geo. R. Williams, St. John's, Nfld.

V.O.A.S. Owner Ayre & Sons, Ltd., St. John's, 940 kilo cycles, 100 watts. Hours 11 a.m. to 12.30 p.m. and 4 p.m. to 5.30 p.m. daily excepting Sundays and holidays. Saturday nights 7.45 to 9.30 Newfoundland Daylight Saving Time.

V.O.G.Y. 840 kilocycles 100 watt carrier, 400 watt peak output, owned and operated by Newfoundland Broadcasting Co. Ltd. Studios at The Newfoundland Hotel, St. John's. Transmitter designed, built and installed by the Canadian Marconi Co. Ltd. The only factory built, 100 per cent. modulated crystal controlled Broadcast Station in Newfoundland. On the occasion of the C.R.C. Goodwill Broadcast, June 15, 1934, V.O.G.Y. was the station selected by the C.R.C. to carry the program on Broadcast Band. Also they used the V.O.G.Y. rebroadcasting apparatus to receive and rebroadcast the address from Canada. With one exception the New-

foundland talent on this Goodwill Program was selected from amongst those being featured on regular sustaining and sponsored programs at V.O.G.Y.—the only station in Newfoundland conforming to the requirements of the Canada Radio Commission.

V.O.A.C. 10 watts, 1300 kilocycles, owner, The Newfoundland Mission, The Seventh Day Adventist Church, 104 Freshwater Rd., St. John's. Hours Saturday 11 to 12.30 p.m. Sundays 5 to 6 p.m. and 6.30 to 8 p.m., Newfoundland D.S.T.

V.O.W.R. Owned by Wesley United Church, Patrick St., St. John's, 681 kilocycles, 500 watts, Sundays 11 a.m. to 12.30 p.m., and 6.30 p.m. Newfoundland D.S.T. This station broadcasts Church services regularly on Sundays from the United Church, Presbyterian Church and St. Thomas' Anglican Church, morning services only. The evening service at 6.30 comes



C. B. SMITH,  
Advertising Department



EARL MORTON,  
Advertising Department



every Sunday from The Wesley United Church only.

V.O.C.M. Owned and operated by Walter B. Williams, Jr., St. John's, 50 watts, 1006 kilocycles, 297 meters. Daily 8.30 to 9 a.m. Newfoundland D.S.T. week days only.

V.O.N.F. Owner Dominion Broadcasting Co., St. John's, 500 watts, 1195 kilocycles, 251 meters, 12 to 2 p.m., Newfoundland D.S.T. 6 to 8 p.m., daily excepting Sunday. Occasionally broadcasts church service from 6.30 to 8 p.m.

All the above are situated in St. John's.

There is another station, V.O.G.F. owned by Alexander Christian at Grand Falls, power 10 watts, which supplies programs, and is used as a commercial station for advertising in the vicinity of Grand Falls.

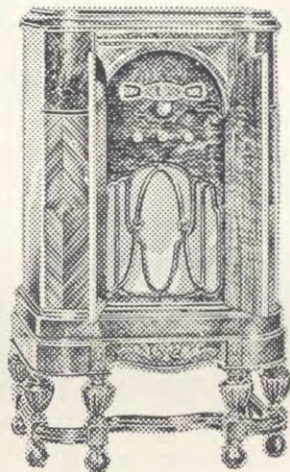
BERT WETMORE  
Goodfellows Secretary



# Marconi

ALL WAVE RADIO

Brings them rolling in



London.....  
Rome.....  
Paris.....  
Moscow.....  
Berlin.....

This newest Marconi Radio brings these famous European stations to your very fireside — elevates radio entertainment to hitherto unknown heights of power and brilliance.

**THE**  
*Phinney*  
**MUSIC CO. LTD**

456-460 BARRINGTON ST.

DISTRIBUTORS FOR NOVA SCOTIA

## MERSEY PAPER COMPANY, LIMITED

LIVERPOOL

NOVA SCOTIA

MANUFACTURERS OF FINEST NEWSPRINT PAPER

ANNUAL CAPACITY 90,000 TONS

“Always More and Better Copies in a Ton  
of Mersey”



# Welcome Voices!

Across the miles, the telephone brings those voices to you and carries your voice in answer. A bell rings and you reach out your hand, knowing that somewhere—near or far—another hand is reaching toward you.

The telephone enlarges the lives and opportunities of all who use it because it enlarges the power to communicate through speech. Contacts with people, ideas exchanged, words spoken . . . by these are our minds stimulated and the entire business of living made more pleasant and productive.

Because the telephone is so important to so many people, the telephone company strives to make its full usefulness available to everyone, everywhere, at all times. Always it tries to emphasize the close contact between each telephone user and the unseen men and women who make good service possible.

**MARITIME TELEGRAPH & TELEPHONE  
COMPANY, LIMITED**





MARION ROBB,  
Provincial News Reviewer

## List of Canadian Radio Stations Changing Frequency September 1, 1934



VON MASON,  
Women's Sport

Following is a list of the frequency changes in Canadian Radio Broadcasting Stations. After September 1, 1934 all these stations will be found at their new frequency on your receiver dial.

### MARITIMES:

CFNB—Fredericton	—	1030 to 550
CHNS—Halifax	—	1050 to 930
CJCB—Sydney	—	880 to 1240
CHSJ—Saint John	—	1210 to 1120
CHGS—Summerside	—	1120 to 1500

### QUEBEC:

CRCQ—Quebec	—	930 to 1050
CRCS—Chicoutimi	—	1500 to 950

### ONTARIO:

CKLW—Windsor	—	840 to 1030
CKNC—Toronto	—	1030 to 1420
CRCT—Toronto	—	960 to 840

### WESTERN PROVINCES:

CJOC—Lethbridge	—	840 to 1230
CFQC—Saskatoon	—	1230 to 840
CKY—Winnipeg	—	780 to 960

### BRITISH COLUMBIA:

CJAT—Trail	—	1200 to 910
CKOV—Kelowna	—	1210 to 630
CFJC—Kamloops	—	1310 to 880



BARBARA McLEOD,  
News and Women's Features

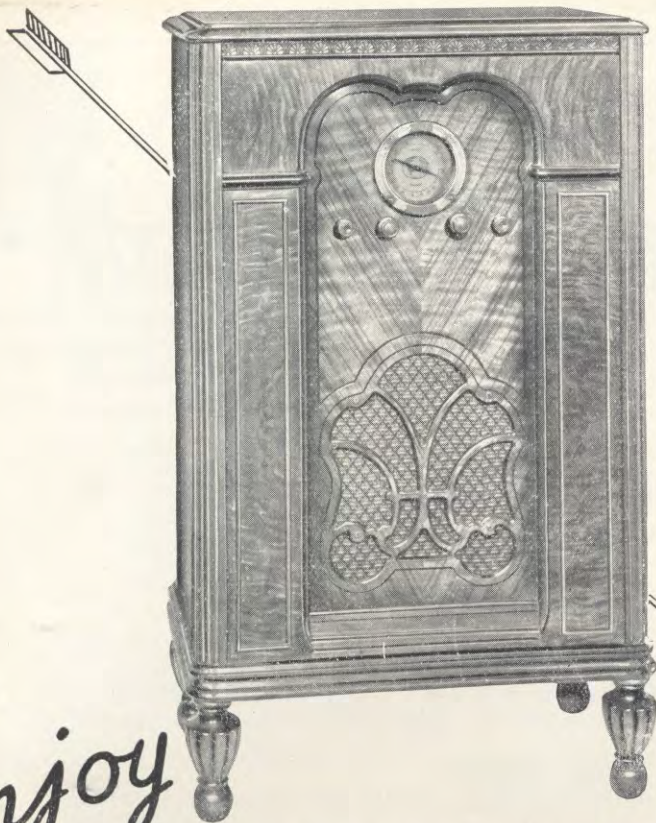
See Also Listing in Main Log in Centre  
of Year Book

Alter marking on your receiver dial



RONALD HART,  
News Broadcaster

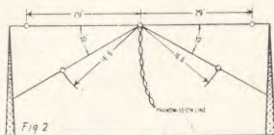




## World Cruiser W634

Powerful "dual band" radio embodying perfected short wave circuit and six new Micro Sensitive Radiotrons.

**\$114.50**



## World Cruiser Antenna

Scientifically adapted to the special requirements of short wave reception.

**\$7.50**

*Enjoy*

**THE BEST THAT'S ON THE AIR**

Here is the radio that makes short wave *...anywhere!* truly practical for the home...a radio that efficiently combines both long and short wave reception... a radio built for *to-morrow's* requirements.

When you own a Westinghouse World Cruiser, hook up on the scientifically designed World Cruiser Antenna and you are assured of the best that's on the air—anywhere!

FYA PARIS

DJB BERLIN

GSE LONDON

EAQ MADRID

HBL GENEVA

OXY DENMARK

# Westinghouse

*Short-wave* **WORLD CRUISER**





PHOTO BY CLIMO

CLYDE DOUGLAS, "The Story Teller," a recent and popular feature.

Location and Licence	Frequency in Kilocycles	Call Sign
<b>MONCTON</b>		
Moncton Broadcasting Co. Ltd., Moncton, N.B. ....	1370	CKCW
<b>SAINT JOHN</b>		
New Brunswick Broadcasting Co. Ltd., Admiral Beatty Hotel, Saint John, N.B. ....	1120	CHSJ
<b>SYDNEY</b>		
N. Nathanson, 318 Charlotte St., Sydney, N.S. ....	1240	CJCB
<b>SUMMERSIDE</b>		
R. T. Holman Ltd., Holman Bldg., 190 Water St., Summerside, P.E.I. ....	1500	CHGS
<b>WOLFVILLE</b>		
Acadia University, Wolfville, N.S. ....	1010	CKIC
<b>YARMOUTH</b>		
Laurie L. Smith, Grand Hotel, Yarmouth, N.S. ....	1310	CJLS

## Radio Broadcasting Stations of the Maritimes

### P.E.I. - N.B. - N.S.

Showing new frequency assignments

Location and Licence	Frequency in Kilocycles	Call Sign
<b>CHARLOTTETOWN</b>		
The Island Radio Broadcasting Co. Ltd., 143 Great George St., Charlottetown, P.E.I. ....	630	CFCY
W. E. Burke & J. A. Gesner, 36 Upper Hillsboro St., Charlottetown, P.E.I. ....	1310	CHCK
<b>FREDERICTON</b>		
J. S. Neill & Sons Ltd., York St., Fredericton, N.B. ....	550	CFNB
<b>HALIFAX</b>		
Maritime Broadcasting Co. Ltd., Lord Nelson Hotel, Halifax, N.S. ....	930	CHNS



PHOTO BY CLIMO

BILLY REID, leader of Reid's Serenaders, Hawaiian musicians.





SAVE THE POKER HANDS

"The purest  
form in  
which  
tobacco can  
be smoked"

*Lancet*



# INTERNATIONAL MORSE CODE

A	...	G	...	M	...	S	...	Y	...	4	.....
B	...	H	...	N	...	T	...	Z	...	5	.....
C	...	I	...	O	...	U	...		...	6	.....
D	...	J	...	P	...	V	...	1	.....	7	.....
E	...	K	...	Q	...	W	...	2	.....	8	.....
F	...	L	...	R	...	X	...	3	.....	9	.....

## ALPHABETICAL INDEX OF RADIO STATIONS

<b>KABC</b> San Antonio, Tex 1420 H <b>KALE</b> Portland, Ore 1300 M <b>KARK</b> Little Rock, Ark 850 H <b>KASU</b> Elk City, Okla 1140 H <b>KBPS</b> Portland, Ore 1420 H <b>KBMT</b> Jonesboro, Ark 1200 H <b>KCMC</b> Texarkana, Ark 1420 H <b>KCRC</b> Euclid, Okla 1370 K <b>KCRJ</b> Jerome, Ariz 1130 H <b>KDE</b> Santa Barb., Cal 1500 H <b>KDFN</b> Casper, Wyo 1440 M <b>KDKA</b> Pittsburgh, Pa 980 W <b>KDLR</b> Devils Lake, N.D. 1210 H <b>KDYL</b> Salt Lake City, U. 1290 O <b>KECA</b> Los Angeles, Cal 1430 O <b>KELW</b> Burbank, Cal 780 M <b>KERN</b> Bakersfield, Cal 1370 H <b>KEX</b> Portland, Ore 1180 S <b>KFB</b> Lincoln, Neb 770 V <b>KFAC</b> Los Angeles, Cal 1300 O <b>KFBF</b> Great Falls, Mont 1280 O <b>KFBI</b> Abilene, Kas 1050 S <b>KFRK</b> Sacramento, Cal 1310 H <b>KFBL</b> Everett, Was 1370 F <b>KFDM</b> Beaumont, Tex 560 M <b>KFDY</b> Brookings, S.D. 780 O <b>KFE</b> Denver, Col 920 M <b>KFCJ</b> St. Joseph, Mo 680 R <b>KFGQ</b> Boone, Iowa 1370 H <b>KFH</b> Wichita, Kan 1300 O <b>KFI</b> Los Angeles, Cal 640 W <b>KFIO</b> Spokane, Nev 1120 H <b>KFIZ</b> Fond du Lac, Wis 1420 H <b>KFJB</b> Marshalltown, Ia 1200 H <b>KFJH</b> Klamath Falls, Ore 1210 H <b>KFJM</b> Gd. Forks, ND 1370 H <b>KFJR</b> Portland, Ore 1300 M <b>KFJZ</b> Ft. Worth, Tex 1370 H <b>KFKA</b> Greeley, Col 890 M <b>KFLW</b> Lawrence, Kan 1240 H <b>KFNF</b> Shenandoah, Ark 880 M <b>KFOR</b> Lincoln, Neb 1210 K <b>KFOX</b> Long Beach, Cal 1250 O <b>KFPL</b> Dublin, Tex 1310 H <b>KFFM</b> Greenville, Tex 1310 C <b>KFJ</b> Ft. Smith, Ark 1210 H <b>KFPY</b> Spokane, Was 1340 O <b>KFPD</b> Anchorage, Alaska 780 K <b>KFRS</b> San Francisco, Cal 610 O <b>KFRU</b> Columbia, Mo 630 M <b>KFSD</b> San Diego, Cal 500 O <b>KFSA</b> Los Angeles, Cal 1120 H <b>KFUO</b> St. Louis, Mo 550 M <b>KFVD</b> San Francisco, Cal 1000 K <b>KFVS</b> C. Girardeau, Mo 1210 K <b>KFWB</b> Los Angeles, Cal 950 O	<b>KFXD</b> Nampa, Idaho 1200 H <b>KFXJ</b> Grand Junction, Colo 1200 H <b>KFXM</b> San Bernardino, 1211 H <b>KFKU</b> Okla. City, Okla 1310 O <b>KFYU</b> Lubbock, Tex 1310 K <b>KFYR</b> Bismarck, N.D. 550 O <b>KGA</b> Spokane, Was 900 S <b>KGAR</b> Tucson, Ariz 1370 K <b>KGB</b> San Diego, Cal 1330 O <b>KGBU</b> Kotzebuk, Alaska 900 M <b>KGBZ</b> Springfield, Mo 1310 M <b>KGBX</b> York, Neb 930 O <b>KGCA</b> Decorah, Iowa 1270 H <b>KGCU</b> Mandan, N.D. 1240 K <b>KGCX</b> Wolf Point, Mont 1310 K <b>KGDE</b> Forgas Falls, Minn. 1200 K <b>KGDM</b> Stockton, Cal 1100 K <b>KGDY</b> Huron, SD 1340 K <b>KGEX</b> Yuma, Cal 1200 H <b>KGER</b> Long Beach, Cal 1360 O <b>KGEZ</b> Kalispell, Mont 1310 H <b>KGFF</b> Shawnee, Okla 1420 H <b>KGFG</b> Okla. City, Okla 1370 H <b>KGFI</b> Cor. Christi, Tex 1500 K <b>KGFJ</b> Los Angeles, Cal 1200 H <b>KGFK</b> Duluth, Minn 1500 H <b>KGFH</b> Roswell, N.M. 1370 H <b>KGFV</b> Kearney, Neb 1310 H <b>KGFW</b> Pierre, S.D. 630 J <b>KGGC</b> San Francisco, Cal 1420 H <b>KGGF</b> Coffeyville, Kan 1010 O <b>KGGM</b> Albuquerque, N.M. 1320 M <b>KGHF</b> Pueblo, Col 1320 M <b>KGHI</b> Little Rock, Ark 1290 K <b>KGHL</b> Billings, Mont 780 O <b>KGIR</b> Butte, Mont 1360 O <b>KGIW</b> Alamogosa, Cal 1420 H <b>KGIX</b> Las Vegas, Nev 1420 H <b>KGKB</b> Tyler, Tex 1500 H <b>KGKL</b> San Antonio, Tex 1370 H <b>KGKO</b> Wichita Falls, Tex 570 M <b>KGKY</b> Scotts Bluff, Neb 1500 H <b>KGMB</b> Honolulu, T. H. 1320 K <b>KGNF</b> No. Platte, Neb 1430 M <b>KGNO</b> Dodge City, Kas 1340 K <b>KGO</b> San Francisco, Cal 750 T <b>KGRS</b> Amarillo, Tex 1410 O <b>KGSU</b> Honolulu, Hawaii 750 R <b>KGVO</b> Missoula, Mont 1200 H <b>KGW</b> Portland, Ore 620 O <b>KGY</b> Olympia, Was 1210 H <b>KHJ</b> Los Angeles, Cal 950 O <b>KHQ</b> Spokane, Was 590 Q <b>KICA</b> Clovis, N.M. 1370 H <b>KICK</b> Carter Lake, Ia 1420 H <b>KID</b> Idaho Falls, Ida 1320 M	<b>KIDO</b> Boise, Ida 1350 O <b>KIDW</b> Lamar, Ark 1420 H <b>KIEM</b> Eureka, Cal 1420 H <b>KIEV</b> Glendale, Cal 850 K <b>KIT</b> Yakima, Was 1310 H <b>KJBS</b> San Francisco, Cal 1070 M <b>KJR</b> Seattle, Was 970 S <b>KLCN</b> Blytheville, Ark 1290 H <b>KLO</b> Ogden, Utah 1460 M <b>KLPM</b> Minot, N.D. 1240 H <b>KLRA</b> Little Rock, Ark 1390 R <b>KLS</b> Oakland, Cal 1440 K <b>KLUF</b> Galveston, Tex 1370 K <b>KLX</b> Oakland, Cal 880 O <b>KLZ</b> Denver, Col 550 O <b>KMA</b> Shennandoah, Ia 930 O <b>KMAC</b> San Antonio, Tex 1370 H <b>KMBC</b> Kansas City, Mo 950 O <b>KMED</b> Medford, Ore 1310 K <b>KMJ</b> Fresno, Cal 580 M <b>KMLB</b> Portnoe, Ia 4200 H <b>KMNJ</b> Clay Center, Neb 740 O <b>KMO</b> Tacoma, Was 1330 K <b>KMOX</b> St. Louis, Mo 1090 W <b>KMPCC</b> Beverly Hills, Cal 710 M <b>KMTR</b> Los Angeles, Cal 570 O <b>KMW</b> Austin, Tex 500 R <b>KNX</b> Los Angeles, Cal 1050 W <b>KOA</b> Denver, Col 830 W <b>KOAC</b> Corvallis, Ore 550 O <b>KOB</b> Albuquerque, N.M. 1180 T <b>KOH</b> Reno, Nev 1380 M <b>KOIL</b> Council Bluffs, Ia 1260 O <b>KONW</b> Portland, Ore 940 R <b>KOL</b> Seattle, Was 1270 O <b>KOMA</b> Okla. City, Okla 1480 S <b>KOMO</b> Seattle, Was 920 O <b>KONO</b> San Antonio, Tex 1370 H <b>KOOS</b> Marshfield, Ore 1200 H <b>KOUE</b> Eugene, Ore 1420 H <b>KOTN</b> Pine Bluff, Ark 1500 H <b>KOY</b> Phoenix, Ariz 1390 M <b>KPCB</b> Seattle, Was 7120 K <b>KPJM</b> Prescott, Ariz 1500 H <b>KPO</b> San Francisco, Cal 650 W <b>KPOF</b> Denver, Col 880 M <b>KPPC</b> Pasadena, Cal 1210 F <b>KPQ</b> Wenatchee, Was 1500 H <b>KPRC</b> Houston, Tex 9200 O <b>KQV</b> Pittsburgh, Pa 1380 M <b>KQW</b> San Jose, Cal 1010 O <b>KRE</b> Berkeley, Cal 1370 H <b>KREG</b> Santa Ana, Cal 1500 H <b>KRGV</b> Weslaco, Tex 1260 M <b>KRKD</b> Los Angeles, Cal 1120 M <b>KRLD</b> Dallas, Tex 1040 T	<b>KRMD</b> Shreveport, La 1310 H <b>KROW</b> Oakland, Cal 930 O <b>KRSC</b> Seattle, Was 1120 H <b>KRSU</b> Manhattan, Kan 580 M <b>KSCJ</b> Sioux City, Ia 1330 R <b>KSD</b> St. Louis, Mo 550 O <b>KSEI</b> Pocatello, Ida 890 M <b>KSL</b> Salt Lake City, U. 1130 W <b>KSO</b> Des Moines, Ia 1320 K <b>KSOO</b> Sioux Falls, S.D. 1110 R <b>KSTP</b> St. Paul, Minn 1460 V <b>KSUN</b> Lowell, Ariz 1200 H <b>KTAB</b> San Francisco, Cal 560 O <b>KTAR</b> Phoenix, Ariz 620 O <b>KTAT</b> Ft. Worth, Tex 1240 O <b>KTES</b> Shreveport, La 1450 R <b>KTFI</b> Twin Falls, Ida 1240 M <b>KTHS</b> Hot Springs, Ark 1060 T <b>KTM</b> Los Angeles, Cal 780 O <b>KTRB</b> Modesto, Cal 740 K <b>KTRH</b> Houston, Tex 630 O <b>KTSA</b> San Antonio, Tex 1250 O <b>KTSM</b> El Paso, Tex 1310 H <b>KTUL</b> Tulsa, Okla 1400 K <b>KTW</b> Seattle, Was 1220 O <b>KUJ</b> Walla Walla, Wash 1370 H <b>KUMA</b> Lima, Ariz 1420 H <b>KUOA</b> Fayetteville, Ark 1260 O <b>KUSD</b> Vermillion, S.D. 890 M <b>KVI</b> Tacoma, Was 570 O <b>KVL</b> Seattle, Was 1370 H <b>KVOA</b> Tucson, Ariz 1260 M <b>KVOA</b> Tulsa, Okla 1140 V <b>KVOR</b> Colo. Spgs., Col 1270 O <b>KVOS</b> Bellingham, Was 1200 H <b>KWCR</b> Cedar Rapids, Ia 1480 K <b>KWEA</b> Shreveport, La 1210 H <b>KWFV</b> Hilo, T.H. 1210 H <b>KWG</b> Stockton, Cal 1200 H <b>KWJ</b> Portland, Ore 1040 M <b>KWJL</b> St. Louis, Mo 1350 O <b>KWK</b> Kansas City, Mo 1370 H <b>KWKH</b> Shreveport, La 1100 T <b>KWL</b> Decorah, Ia 1270 H <b>KWSC</b> Pullman, Ia 1220 O <b>KWTN</b> Watertown, S.D. 1210 H <b>KWTO</b> Springfield, Mo 560 M <b>KWVG</b> Brownville, Tex 1260 M <b>KWYO</b> Sheridan, Wyo 1370 H <b>KXA</b> Seattle, Was 760 M <b>KXL</b> Portland, Ore 1420 K <b>KXO</b> El Centro, Cal 1500 H <b>KXRO</b> Aberdeen, Was 1310 H <b>KXYZ</b> Houston, Tex 1440 M <b>KYA</b> San Francisco, Cal 1230 O <b>KYW</b> Chicago, Ill 1020 T
--	---	---	--

### CANADIAN

<b>CFAC</b> Calgary, Alta 930 H <b>CFCF</b> Montreal, Que 600 M <b>CFCH</b> North Bay, Ont 930 H <b>CFCN</b> Calgary, Alta 1030 T <b>CFCO</b> Chatham, Ont 600 H <b>CFDY</b> Charlottetown, PEI 630 M <b>CFEG</b> Kamloops, B.C. 610 H <b>CFEL</b> Fredericton, Ont 930 H <b>CFNB</b> Fredericton, N.B. 550 M <b>CFPL</b> London, Ont 730 H <b>CFQC</b> Saskatoon, Sask 840 O <b>CFRB</b> Toronto, Ont 690 T <b>CFRC</b> Kingston, Ont 1510 H <b>CHCK</b> Charlottetown, PEI 1310 F <b>CHGS</b> Summerside, PEI 1500 F <b>CHLP</b> Montreal, Que 1120 H <b>CHNS</b> Halifax, N.S. 930 M <b>CHRS</b> Quebec, Que 530 H <b>CHTC</b> St. Catharines, Ont 120 H <b>CHWC</b> Regina, Sask 1010 M <b>CJLS</b> Yarmouth, N.S. 1310 H
---

<b>CHWK</b> Chilliwack, B.C. 780 H <b>CJAT</b> Trull, B.C. 910 K <b>CJCA</b> Edmonton, Alta 730 M <b>CJCB</b> Sydney, N.S. 1240 O <b>CJCC</b> Calgary, Alta 690 H <b>CJGX</b> Yorkton, Sask 630 M <b>CJHC</b> Regina, Sask 1010 H <b>CJHR</b> Vancouver, B.C. 600 M <b>CJRM</b> Moose Jaw, Sask 540 O <b>CKAK</b> Montreal, Que 730 S <b>CKCD</b> Vancouver, B.C. 1010 H <b>CKCK</b> Regina, Sask 1010 M <b>CKCL</b> Toronto, Ont 530 H <b>CKCO</b> Ottawa, Ont 1010 H <b>CKLR</b> Waterloo, Ont 1510 H <b>CKLW</b> Windsor, Ont 1030 S <b>CKMK</b> Cobalt, Ont 1210 F <b>CKMO</b> Vancouver, B.C. 1410 H <b>CKNC</b> Toronto, Ont 120 H <b>CKOC</b> Hamilton, Ont 1120 M <b>CKCW</b> Moncton, N.B. 1370 H
--

### CUBAN

<b>CKOY</b> Kelowna, B.C. 630 H <b>CKPC</b> Preston, Ont 830 H <b>CKPR</b> Ft. William, Ont 930 F <b>CKTB</b> St. Catherine, Ont 1200 H <b>CKUA</b> Edmonton, Alta 580 M <b>CKWX</b> Vancouver, B.C. 1010 H <b>CKY</b> Brandon, Man 1450 M <b>CKY</b> Winnipeg, Man 950 O <b>CRCK</b> Quebec, Que 1050 O <b>CRCM</b> Montreal, Que 910 S <b>CRCO</b> Ottawa, Ont 880 O <b>CRCS</b> Chleouthin, Que 950 H <b>CRCT</b> Toronto, Ont 840 S <b>CRCV</b> Vancouver, B.C. 1370 H <b>CMF</b> Havana, Cuba 680 O <b>CMC</b> Havana, Cuba 835 M <b>CMCQ</b> Havana, Cuba 735 O <b>CMCY</b> Havana, Cuba 1175 M <b>CMJK</b> Camaguey, Cuba 790 M <b>CMK</b> Havana, Cuba 730 S
---

### MEXICAN

<b>CMKD</b> Santiago, Cuba 885 K <b>CMQ</b> Havana, Cuba 630 M <b>CMW</b> Havana, Cuba 875 F <b>CMX</b> Havana, Cuba 875 M <b>HHTK</b> Portau Prince, Haiti 920 O <b>XEAF</b> Nogales, Mex 990 K <b>XEAW</b> Reynosa, Mex 950 T <b>XEBC</b> Aguacaliente, Mex 1280 R <b>XEFO</b> Mexico City, Mex 940 S <b>XEJ</b> Juarez, Mex 1020 M <b>XEMO</b> Tijuana, Mex 860 R <b>XEN</b> Mexico City, Mex 710 O <b>XET</b> Mexico City, Mex 1340 W <b>XEP</b> Tijuana, Mex 890 K <b>XEK</b> Mexico City, Mex 970 O <b>XEPN</b> Piedras Negras, Mex 590 W <b>XET</b> Monterrey, Mex 690 M <b>XEW</b> Mexico City, Mex 890 S <b>XEYZ</b> Mexico City, Mex 780 T
--

50	75	100	150	200	250	300	500	750	1000	POWER	1500	2000	2500	5000	10000	15000	25000	50000
F	G	H	I	J	K	L	M	N	O	CODE	P	Q	R	S	T	U	V	W



Stations in the chart below are grouped in exact dial-number order. Each group is map-like. Power is shown by letters F to W, see code above. Networks: \*Columbia, †National WEAf, ‡National WJZ, §National WEAf or WJZ. For dials numbered 540 to 1500 or 54 to 150, there may be slight variations so record the exact number from your dial in the blank center column. For dials numbered 100 to 0, or otherwise, refer to alphabetical list, if necessary, record YOUR number opposite kilocycle number in chart below and you not only translate that technical term, but after a few, are able to find desired programs listed in newspapers. You'll note your numbers appear in exact order and stations between can be identified without station announcements. Nothing could be more simple.

Revision 44

Copyright, 1934—by Haynes' Radio Log.

FALL, 1934

WESTERN Wash., Ore., Cal., Utah, Etc.		MIDDLE WESTERN Minn., Ia., Neb., Mo., Tex., Etc.		KILO	Dial No.	CENTRAL Ill., Mich., Ohio, Tenn., Etc.		EASTERN Mass., N. Y., Pa., N. C., Etc.	
CJRM	Moose Jaw, Sask.	O		540					
KOAC	Corvallis, Ore.		†KSD-KFUD St. Louis, Mo.	550		*WKRC Cincinnati, Ohio	O	*CFNB Fredericton, N.B.	M
†KLZ	Denver, Colo.	O	†KFYR Bismarck, N. D.			†WVA Staunton, Va.	O	*WGBF Buffalo, N. Y.	O
KTAB	San Francisco, Cal.	O	†KFTO Springfield, Mo.	560		*WIND Chicago-Gary, Ind.	O	†WFI-†WLT Philadelphia	M
*KVI	Tacoma, Wash.	O	†KDFM Beaumont, Tex.			*WNOX Knoxville, Tenn.	O	†WQAM Miami, Fla.	O
KMTR	Los Angeles, Cal.	O	†WNAJ Yankton, S. D.	570		*WKBN Youngstown, Ohio	M	†WUNC Asheville, N. C.	O
CKUA	Edmonton, Alta.	M	†KGKO Wichita Falls, Tex.			†WOSU Columbus, Ohio	O	†WMCANewYork(†WSYR)	M
KMJ	Fresno, Cal.	M	†WIBW Topeka, Kas.	580		†WCHS Charleston, W. Va.	O	†WTAG Worcester, Mass.	M
†KHQ	Spokane, Wash.	O	†KSAC Manhattan, Kas.			*WDBO Orlando, Fla.	K	†WEEI Boston, Mass.	O
†CJOR	Vancouver, B.C.	M	†TWOV Omaha, Neb.	590		†WKZO Kalamazoo, Mich.	O	†WICC Bridgeport (WCAC)	M
†KFSO	San Diego, Cal.	M	†XEPN Pedras Negras, Coah.			†CMW Havana, Cuba	P	†WCAO Baltimore, Md.	M
*KFRS	San Francisco, Cal.	O	†WMT Waterloo, Iowa	600		†CFOP Montreal, Que.	M	†WIP Philadelphia, Pa.	M
†KGW	Portland, Ore.	O	†WDAF Kansas City, Mo.	610		*WREC Memphis, Tenn.	M	*WLBZ Bangor, Maine	O
†KTR	Phoenix, Ariz.	O		620		†WJAY Cleveland, Ohio	M	†WHJB Pittsburgh, Pa.	K
†KJGX	Yorkton, Sask.	M	†KFRU Columbia, Mo.	630		†WTMJ Milwaukee, Wis.	R	†WCFY Charlottesville, PEI	M
*KTRH	Houston, Tex.	O	†WOS Jefferson City, Mo.			†WFLA-†WSUN Florida	O	†WMAL Washington, D. C.	M
†KFI	Los Angeles, Cal.	W	†WOI Ames, Iowa	640		†WGBF Evansville, Ind.	O		
			†XFG Mexico City, D. F.	650		†WAIU Columbus, Ohio	M		
				660		†WSM Nashville, Tenn.	W		
			†WAAW Omaha, Nebr.	670				†WEAF New York City	W
†KPO	San Francisco, Cal.	W	†KFEQ St. Joseph, Mo.	680		†WMAQ Chicago, Ill.	W	†WPTF Raleigh, N. C.	S
CJJC	Calgary, Alta.	M	XET Monterey, Mex.	690		†CMAF Havana, Cuba	O	†CFRB Toronto, Ont.	S
				700		†NAA Arlington, Va.	O		
KPCB	Seattle, Wash.	K	XEN Mexico City	710		†WLW Cincinnati, Ohio	W	†WOR Newark, N. J.	W
KMPCC	Beverly Hills, Cal.	M		720					
				730		†WGN Chicago, Ill.	W		
CJCA	Edmonton, Alta.	M		740		†CMK Havana, Cuba	S	*CKAC Montreal, Que.	S
KTRB	Modesto, Cal.	K	†KMMJ Clay Center, Neb.	750		†WSB Atlanta, Ga.	W	*WHEB Portsmouth, N. H.	K
†KGU	Honolulu, Hawaii	R		760		†WJR Detroit, Mich.	T	†WJZ New York (WBAL)	W
KXA	Seattle, Wash.	M	†WEW St. Louis, Mo.			*WBBM Chicago, Ill.	V		
			†KFAB Lincoln, Nebr.	770		†WMC Memphis, Tenn.	O	†WEAN Providence, R. I.	M
†KFQD	Anchorage, Al.	K	†KHGL Billings, Mont.	780		†CMCQ Havana, Cuba	M	†WTAR Norfolk, Va.	M
†KTM	Los Angeles (KELW)	M	†KFDY Brookings, S. D.			†CMJK Camaguey, Cuba	M	†WGY Schenectady, N. Y.	W
†KGO	San Francisco, Cal.	T		790				†WTO Cumberland, Md.	K
			†WFAA Dallas, (†WBAP)	800				†WNYC New York City	M
			*WCCO Minneapolis, Minn.	810					
				820		*WHAS Louisville, Ky.	W		
CFQC	Saskatoon, Sask.	O	†KOA Denver, Colo.	830		†WRUF Gainesville, Fla.	S	†WHDH Boston, Mass.	O
KIEV	Glendale, Cal.	K		840		†CMC Havana, Cuba	M	†WEEU Reading, Pa.	O
XEMO	Tijuana Mex.	P	†WHB Kansas City, Mo.	850		†WNL New Orleans, La.	T	†CRCT Toronto, Ont.	S
				860					
KLX	Oakland, Cal.	O	†WSUI Iowa City, Ia.	870		†WENR-†WLS Chicago, Ill.	W	*WABC-WBOQ New York	W
KSEI	Pocatello, Idaho	K	†KFKA-KPOF Colorado	880		†CRCO Ottawa, Ont.	O	†WGBI-WQAN Scranton, Pa.	M
KARK	Little Rock, Ark.	M	†KUSD Vermillion, S. D.			†WCOG Meridian, Miss.	O	†WPHR Petersburg, Va.	K
†KGA	Spokane, Wash.	S	†KNFN Shenandoah, Ia.	890		†WILL Urbana Ill (WBAA)	K	†WGST Atlanta, Ga.	O
*KHJ	Los Angeles, Cal.	O	†WKY Okla. City, Okla.			†WMMN Fairmont, W. Va.	M	†WJAR Providence, R. I.	M
			†XEW Mexico City	900		†WBL Stevens Pt., Wis.	R	†WBBN Buffalo, N. Y.	O
CJAT	Trall, B.C.	K		910		†CMX Havana, Cuba	M	†WJAX Jacksonville, Fla.	O
†KOMO	Seattle, Wash.	O	†KPRC Houston, Texas	920				†CRCM Montreal, Que.	S
XEOK	Tijuana Mex.	R	†KFLC-KVOD Denver			†WAWF Chicago, Ill.	M	†WBSO Needham, Mass.	M
KROW	Oakland, Cal.	O	†KMA Shenandoah, Ia.	930		*WBRC Birmingham, Ala.	M	†HKK Port au Prince, Haiti	M
KFWI	San Francisco, Cal.	M	†KGBZ York, Neb.			†WAVE Louisville, Ky.	O	†CHNS Halifax, N.S.	O
*KOIN	Portland, Ore.	R	†WDAY Fargo, N. D.	940		†XEFO Mexico City, Mex.	T	†WDBJ Roanoke, Va.	O
			†WHA Madison, Wis.					†WCSS Portland, Maine	R
KFWB	Hollywood, Cal.	O	*KMBC Kansas City, Mo.	950				†WAET Jersey City, N. J.	M
			†XEAW Reynosa, Tams.					†WRC Washington, D. C.	O
			†CKY Winnipeg, Man.	960					
†KJR	Seattle, Wash.	S	†XEP Mexico City	970		†WCFL Chicago, Ill.	P	†WIBG Glenside, Pa.	H
				980				†KDKA Pittsburgh, Pa.	W
			†XEAJ Nogales, Mexico	990		†WJEM Tupelo, Miss.	M	†WBZ-WBZA Boston, Mass.	W
KFVD	Los Angeles, Cal.	K	†WHO-WOC Des Moines, pt. W.	1000				†WORK York, Pa.	O







WAAB Boston... Mass 1410 M	WABC Waco... Tex 820 W	WABC Akron... Ohio 1320 H	WAGF DOTHAM Ala 1370 H	WAGM Presque Isle... Me 1420 H	WALB Columbus... Ohio 640 W	WALS Mobile... Ala 1380 M	WALR Zanesville... Ohio 1210 H	WAMC Anniston... Ala 1420 H	WAML Laurel... Miss 1310 H	WAPI Birmingham... Ala 1140 S	WARD Brooklyn... N.Y. 1120 W	WASH Grand Rapids... Mich 1270 M	WATR Waterbury... Conn 1190 H	WAVE Louisville... Ky 940 O	WAWZ New York... N.Y. 1350 K	WAZL Hazleton... Pa 1420 H	WBAF Lafayette... Ind 890 M	WBAA Baltimore... Md 1060 T	WBAP Fort Worth... Tex 800 W	WBAX Wilkes-Barre... Pa 1210 H	WBBC Brooklyn... N.Y. 1400 M	WBBL Richmond... Va 1210 H	WBCH Chicago... Ill 1120 V	WBBS Brooklyn... N.Y. 1300 O	WBBS Ponca City... Okla 1200 H	WBCHM Bay City... Mich 1410 M	WBEN Buffalo... N.Y. 900 O	WBEO Marquette... Mich 1310 H	WBET Huntsville... Ala 1200 H	WBIG Greensboro... NC 1440 M	WBNO New Orleans... La 1200 H	WBNS Columbus... Ohio 1430 O	WBNSX New York... N.Y. 1350 K	WBQY Springfield... Ind 840 M	WBRC Birmingham... Ala 930 H	WBRE Wilkes-Barre... Pa 1310 H	WBSSO Needham... Mass 920 M	WBST Charlotte... N.C. 1080 W	WBTM Danville... Va 1370 H	WBTV Springfield... Mass 990 O	WBUC Storrs... Conn 600 M	WCAD Canton... N.Y. 1220 M	WCAE Pittsburgh... Pa 1220 O	WCAL Northfield... Minn 1250 R	WCAM Camden... N.J. 1300 M	WCAP Asbury Park... N.J. 1280 M	WCAT Rapid City... S.D. 1200 H	WCAU Philadelphia... Pa 1170 W	WCAX Burlington... Vt 1200 H	WCAY Carthage... Ill 1070 H	WCEA Allentown... Pa 1440 K	WCBD Zion... Ill 1080 S	WCBM Baltimore... Md 1370 K	WCBS Springfield... Ill 1210 H	WCCO Minneapolis... Minn 810 W	WCFL Chicago... Ill 1190 P	WCFB Charlotte... N.C. 960 W	WCKY Covington... Ky 1490 S	WCLO Janesville... Wis 1200 H	WCLS Joliet... Ill 1310 H	WCNWX Brooklyn... N.Y. 1500 K	WCOA Pensacola... Fla 1340 M	WCOG Meridian... Miss 880 M	WCRC Chicago... Ill 11210 H	WCSC Charleston... S.C. 1360 O	WCSP Portland... Me 940 R	WDAE Tampa... Fla 1220 O	WDAF Kansas City... Mo 610 O	WDEF Anniston... Ala 1120 H	WDAH El Paso... Tex 1310 H	WDAS Philadelphia... Pa 1370 K	WDAY Fargo... N.D. 940 O	WDBJ Roanoke... Va 930 O	WDBO Orlando... Fla 580 K	WDEL Wilmington... Del 1210 K	WDEW Waterbury... Vt. 550 M	WDGY Minneapolis... Minn 1180 O	WDNC Durham... N.C. 1500 H	WDDD Chattanooga... Ten 1280 R	WDRS Hartford... Conn 1310 H	WDEL New Orleans... La 1200 H	WDZ Tuscola... Ill 1070 H	WEAF New York... N.Y. 660 W	WEAN Providence... R.I. 1270 M	WEEB Duluth... Minn 1290 R	WEEQ Harrisburg... Ill 1210 K	WEER Buffalo... N.Y. 1310 K	WEEC Chicago... Ill 1210 H	WEED Rocky Mt... N.C. 1300 H	WEEG New York... Mass 590 O	WEEU Reading... Pa 830 O	WEHC Charlottesville... Va 1350 M	WEHS Chicago... Ill 1420 H	WELL Battle Ck... Mich 3420 F	WENR Chicago... Ill 370 W	WENR Elm St... N.Y. 1090 O	WEVD New York... N.Y. 1300 O	WEW St. Louis... Mo 760 O	WEXL Royal Oak... Mich 4310 F	WFAA Dallas... Tex 800 W	WFB New York... N.Y. 1000 O	WFAM South Bend... Ind 1200 H	WFAS White Plains... N.Y. 1210 H	WFBC Greenville... S.C. 1300 K	WFBE Cincinnati... O 1200 K	WFBG Altoona... Pa 1310 H	WFBL Syracuse... N.Y. 1360 R	WFBM Indianapolis... Ind 1230 O	WFBF Baltimore... Md 1270 M	WFDF Flint... Mich 1310 H	WFEA Manchester... N.H. 1430 M	WFI Philadelphia... Pa 560 M	WFLA Orlando... Fla 1210 H	WGLA Lancaster... Pa 1500 K	WGAR Cleveland... O 1450 O	WGBB Freeport... N.Y. 1210 H	WGBF Evansville... Ind 630 M	WGCI Scranton... Pa 880 M	WGM GM Guilford... Miss 1210 K	WGCP Newark... N.J. 1250 O	WGES Chicago... Ill 1360 M	WGH Newport News... Va 1310 H	WGL Ft. Wayne... Ind 1370 H	WGLC Hudson Fls... N.Y. 1370 H	WGLD Chicago... Ill 1200 W	WGNV Chester Twp... N.Y. 1210 H	WGPC Albany... Ga 1420 H	WGR Buffalo... N.Y. 550 O	WGST Atlanta... Ga 890 O	WGY Schenectady... N.Y. 790 W	WHA Madison... Wis 940 R	WHAM Rochester... N.Y. 1150 W	WHAS Louisville... Ky 820 W	WHAT Philadelphia... Pa 1310 H	WHAZ Troy... N.Y. 1300 M	WHB Kansas City... Mo 860 M	WHBC Cleveland... Ohio 960 W	WHBD Bellefontaine... O 1370 H	WHBF Rock Island... Ill 1210 H	WHBL Sheboygan... Wis 1410 M	WHB Memphis... Tenn 1370 H	WHBU Anderson... Ind 1210 H	WHBY Green Bay... Wis 1200 H	WHDF Duluth... Mich 1370 M	WHDH Boston... Mass 830 K	WHDL Tupper Lake... N.H. 1420 H	WHBE Portsmouth... N.H. 740 K	WHEC Rochester... N.Y. 1430 M	WHFC Kosciusko... Miss 1500 K	WHG Chicago... Ill 1420 H	WHIS Bluefield... W. Va 1410 K	WHJB Pittsburgh... Pa 620 K	WHK Cleveland... Ohio 1390 R	WHN New York... N.Y. 1010 O	WHO Des Moines... Ia 1000 W	WHOM Jersey City... N.J. 1450 H	WHP Harrisburg... Pa 1430 O	WIB Madison... Wis 1280 O	WIBG Glenside... Pa 970 H	WIBM Jackson... Mich 1370 H	WIBU Poyntette... Wis 1210 H	WIBC Toledo... Kan 960 W	WIBX Utica... N.Y. 1200 L	WICC Bridgeport... Conn 600 M	WIL St. Louis... Mo 1200 K	WILL Urbana... Ill 880 K	WILM Wilmington... Del 1420 H	WIND Gary... Ind 560 O	WINS New York... N.Y. 1180 O	WIOD Miami Beach... Fla 1300 O	WIP Philadelphia... Pa 610 M	WIS Columbia... S.C. 1010 O	WISN Milwaukee... Wis 1120 M	WISN Johnston... N.H. 1210 H	WJAG Norfolk... Neb 1060 O	WJAR Providence... R.I. 1890 M	WJAS Pittsburgh... Pa 1290 R	WJAX Jacksonville... Fla 900 O	WJAY Cleveland... Ohio 610 M	WJBC Bloomington... Ill 1200 H	WJBI Red Bank... N.J. 1210 H	WJBL Highland Pk... Mich 1500 H	WJBO Boston... Ma 630 H	WJBO New Orleans... La 1420 H	WJBY New Orleans... La 1200 H	WJBY Gadsden... Ala 1210 H	WJDX Jackson... Miss 1270 O	WJEF Hagerstown... Md 1210 H	WJFK Tupelo... Miss 990 M	WJIM Lansing... Mich 1210 H	WJJD Chicago... Ill 11310 H	WJMS Ironwood... Mich 1420 H	WJR Detroit... Mich 750 T	WJRH Washington... D.C. 1450 T	WJTL Atlanta... Ga 1370 H	WJW Akron... Ohio 1210 H	WJZ New York... N.Y. 760 W	WKAQ San Juan... P.R. 1240 O	WKAR E. Lansing... Mich 1040 O	WKBF Indianapolis... Ind 1400 M	WKBB LaCrosse... Wis 1380 O	WKBI Chicago... Ill 11420 H	WKBN Youngstown... O 570 M	WKBF Harrisburg... Pa 1200 H	WKBF Buffalo... Pa 1210 H	WKBV Richmond... Ind 1500 H	WKBB Muskegon... Mich 1500 H	WKEU La Grange... Ga 1500 H	WKFI Greenville... Miss 1210 H	WKJG Lancaster... Pa 1200 K	WKJK Sunbury... Pa 1210 H	WKRC Cincinnati... Ohio 550 O	WKY Okla. City... Okla 990 O	WKZO Kalamazoo... Mich 590 O	WLAC Nashville... Tenn 1470 S	WLAP Lexington... Ky 1420 K	WLBB Minneapolis... Minn 1250 O	WLBC Muncie... Ind 1310 H	WLBF Kan. City... Kan 1420 H	WLBL Stevens Pt... Wis 900 R	WLBE Erie... Pa 1260 O	WLBY Bangor... Me 620 M	WLEU Erie... Pa 1420 H	WLEY Lexington... Mass 1370 K	WLIT Philadelphia... Pa 560 M	WLNH Laconia... N.H. 1310 H	WLS Chicago... Ill 870 H	WLBK Brooklyn... N.Y. 1400 M	WLVA Lynchburg... Va 1200 W	WLW Cincinnati... O 900 W	WLWL New York... N.Y. 1100 S	WMAL Washington... D.C. 630 W	WMAQ Chicago... Ill 670 M	WMAS Springfield... Mass 1420 K	WMAZ Macon... Ga 1180 O	WMBB Detroit... Mich 1200 K	WMBD Peoria... Ill 1440 O	WMBG Richmond... Va 1210 H	WMBH Joplin... Mo 1420 K	WMBI Chicago... Ill 1080 S	WMBQ Auburn... N.Y. 1310 H	WMBR New York... N.Y. 1210 H	WMBR Jacksonville... Fla 1370 O	WMC Memphis... Tenn 760 H	WMCA New York... N.Y. 570 O	WMEX Boston... Mass 1500 K	WMFM Fairmont... W. Va 890 M	WMLC Lapeer... Mich 1200 H	WMT Waterloo... Ia 600 O	WNAC Boston... Mass 1200 O	WNAD Norman... Okl 1010 M	WNAX Yankton... S.D. 570 R	WNEF Binghamton... N.Y. 1500 H	WNEW New Bedford... N.J. 1250 O	WNBO Silver Haven... Pa 1200 H	WNER Memphis... Tenn 1430 H	WNEX Springfield... Vt 1260 M	WNEZ Saranac Lake... N.Y. 1290 H	WNEL San Juan... P.R. 1290 M	WNEW Newark... N.J. 1250 O	WNOX Knoxville... Tenn 560 H	WNRA Muscle Shs... La 1420 K	WNYC New York... N.Y. 810 M	WDAI San Antonio... Tex 1190 W	WOC Davenport... Ia 1000 W	WOF Jamestown... N.Y. 1210 F	WOI Ames... Ia 640 S	WOKO Albany... N.Y. 1430 M	WOL Washington... D.C. 1310 K	WOMT Manitowish... Wis 1210 H	WOOD Gd Rpd... Mich 1270 M	WOPI Bristol... Tenn 1500 H	WOR Newark... N.J. 710 W	WORC Worcester... Mass 1280 M	WOSK Jefferson City... Mo 630 H	WOSU Columbus... Ohio 570 O	WOV New York... N.Y. 1130 O	WOVO Omaha... Neb 590 W	WOXF Ft. Wayne... Ind 1160 T	WPHD Paducah... Ky 1420 H	WPEN Philadelphia... Pa 1310 H	WPFB Hattiesburg... Miss 1370 H	WPG Atlantic City... N.J. 1100 S	WPHR Petersburg... Va 880 M	WPRI Providence... R.I. 630 K	WPTR Raleigh... N.C. 1500 H	WQAM Miami... Fla 560 O	WQAN Scranton... Pa 880 K	WQBC Vicksburg... Miss 1360 M	WQDM St. Albans... Vt 1370 H	WQDX Thomasville... Ga 1210 H	WRAK Wheeling... Pa 1370 H	WRAW Reading... Pa 1310 H	WRAX Philadelphia... Pa 920 K	WRBL Columbus... Ga 1200 H	WRBX Roanoke... Va 1410 M	WRD Washington... D.C. 950 O	WRDQ Asheville... N.C. 1370 H	WRDW Augusta... Ga 1500 H	WREN Memphis... Tenn 600 O	WREC Lawrence... Kan 1220 O	WRCA Rome... Ga 1500 H	WRMN Minneapolis... Minn 1250 O	WRNJ Raritan... N.J. 1370 H	WROK Rockford... Ill 1410 M	WROL Knoxville... Tenn 1310 H	WRRR Dallas... Tex 1280 M	WRUF Gainesville... Fla 830 S	WRVA Richmond... Va 1110 S	WSAI Cincinnati... O 1310 H	WSAJ Grove City... Pa 1310 H	WSAN Allentown... Pa 1440 K	WSAR Fall River... Mass 1450 K	WSAZ Huntington... W. Va 1190 O	WSB Atlanta... Ga 740 W	WSBC Chicago... Ill 1210 H	WSBT South Bend... Ind 1360 M	WSEN Columbus... O 1210 H	WSFA Montgomery... Ala 1410 M	WSGN Birmingham... Ala 1310 H	WSHG Springfield... Tenn 1210 H	WSJS Winston Salem... N.C. 1310 H	WSM Nashville... Tenn 650 W	WSME New Orleans... La 1320 O	WSMK Dayton... O 1380 J	WSOC Charlotte... N.C. 1210 K	WSPA Spartanburg... S.C. 1420 K	WTOD Toledo... O 1340 O	WSUI Iowa City... Ia 880 O	WSUN St. Petersburg... Fla 820 O	WSVA Staunton... Va 550 M	WSVS Buffalo... N.Y. 1370 F	WSYB Rutland... Vt 1500 K	WSYR Syracuse... N.Y. 570 K	WSYU Syracuse... N.Y. 570 K	WTAD Quincy... Ill 1440 M	WTAG Worcester... Mass 580 M	WTAM Cleveland... O 1070 W	WTAQ Eau Claire... Wis 1330 O	WTAR Norfolk... Va 780 M	WTAW Collierville... Tenn 1210 H	WTAX Springfield... Ill 1210 H	WTO Cumberland... Md 800 K	WTEL Philadelphia... Pa 1310 H	WTFI Athens... Ga 1450 M	WTFW Hartford... Conn 1010 W	WTJS Jackson... Tenn 1310 K	WTMJ Milwaukee... Wis 620 R	WTNJ Trenton... N.J. 1280 R	WTOD Savannah... Ga 1260 O	WTRC Elkhart... Ind 1310 H	WTVN New York... N.Y. 1400 H	WVAE Hammond... Ind 1200 H	WVJ Detroit... Mich 920 O	WVW New Orleans... La 850 T	WVNC Asheville... N.C. 570 O	WVRV Woodside... N.Y. 1500 K	WVWV Pittsburgh... Pa 1500 K	WVVA Wheeling... W. Va 150 S	WXYZ Detroit... Mich 1240 O
----------------------------	------------------------	---------------------------	------------------------	--------------------------------	-----------------------------	---------------------------	--------------------------------	-----------------------------	----------------------------	-------------------------------	------------------------------	----------------------------------	-------------------------------	-----------------------------	------------------------------	----------------------------	-----------------------------	-----------------------------	------------------------------	--------------------------------	------------------------------	----------------------------	----------------------------	------------------------------	--------------------------------	-------------------------------	----------------------------	-------------------------------	-------------------------------	------------------------------	-------------------------------	------------------------------	-------------------------------	-------------------------------	------------------------------	--------------------------------	-----------------------------	-------------------------------	----------------------------	--------------------------------	---------------------------	----------------------------	------------------------------	--------------------------------	----------------------------	---------------------------------	--------------------------------	--------------------------------	------------------------------	-----------------------------	-----------------------------	-------------------------	-----------------------------	--------------------------------	--------------------------------	----------------------------	------------------------------	-----------------------------	-------------------------------	---------------------------	-------------------------------	------------------------------	-----------------------------	-----------------------------	--------------------------------	---------------------------	--------------------------	------------------------------	-----------------------------	----------------------------	--------------------------------	--------------------------	--------------------------	---------------------------	-------------------------------	-----------------------------	---------------------------------	----------------------------	--------------------------------	------------------------------	-------------------------------	---------------------------	-----------------------------	--------------------------------	----------------------------	-------------------------------	-----------------------------	----------------------------	------------------------------	-----------------------------	--------------------------	-----------------------------------	----------------------------	-------------------------------	---------------------------	----------------------------	------------------------------	---------------------------	-------------------------------	--------------------------	-----------------------------	-------------------------------	----------------------------------	--------------------------------	-----------------------------	---------------------------	------------------------------	---------------------------------	-----------------------------	---------------------------	--------------------------------	------------------------------	----------------------------	-----------------------------	----------------------------	------------------------------	------------------------------	---------------------------	--------------------------------	----------------------------	----------------------------	-------------------------------	-----------------------------	--------------------------------	----------------------------	---------------------------------	--------------------------	---------------------------	--------------------------	-------------------------------	--------------------------	-------------------------------	-----------------------------	--------------------------------	--------------------------	-----------------------------	------------------------------	--------------------------------	--------------------------------	------------------------------	----------------------------	-----------------------------	------------------------------	----------------------------	---------------------------	---------------------------------	-------------------------------	-------------------------------	-------------------------------	---------------------------	--------------------------------	-----------------------------	------------------------------	-----------------------------	-----------------------------	---------------------------------	-----------------------------	---------------------------	---------------------------	-----------------------------	------------------------------	--------------------------	---------------------------	-------------------------------	----------------------------	--------------------------	-------------------------------	------------------------	------------------------------	--------------------------------	------------------------------	-----------------------------	------------------------------	------------------------------	----------------------------	--------------------------------	------------------------------	--------------------------------	------------------------------	--------------------------------	------------------------------	---------------------------------	-------------------------	-------------------------------	-------------------------------	----------------------------	-----------------------------	------------------------------	---------------------------	-----------------------------	-----------------------------	------------------------------	---------------------------	--------------------------------	---------------------------	--------------------------	----------------------------	------------------------------	--------------------------------	---------------------------------	-----------------------------	-----------------------------	----------------------------	------------------------------	---------------------------	-----------------------------	------------------------------	-----------------------------	--------------------------------	-----------------------------	---------------------------	-------------------------------	------------------------------	------------------------------	-------------------------------	-----------------------------	---------------------------------	---------------------------	------------------------------	------------------------------	------------------------	-------------------------	------------------------	-------------------------------	-------------------------------	-----------------------------	--------------------------	------------------------------	-----------------------------	---------------------------	------------------------------	-------------------------------	---------------------------	---------------------------------	-------------------------	-----------------------------	---------------------------	----------------------------	--------------------------	----------------------------	----------------------------	------------------------------	---------------------------------	---------------------------	-----------------------------	----------------------------	------------------------------	----------------------------	--------------------------	----------------------------	---------------------------	----------------------------	--------------------------------	---------------------------------	--------------------------------	-----------------------------	-------------------------------	----------------------------------	------------------------------	----------------------------	------------------------------	------------------------------	-----------------------------	--------------------------------	----------------------------	------------------------------	----------------------	----------------------------	-------------------------------	-------------------------------	----------------------------	-----------------------------	--------------------------	-------------------------------	---------------------------------	-----------------------------	-----------------------------	-------------------------	------------------------------	---------------------------	--------------------------------	---------------------------------	----------------------------------	-----------------------------	-------------------------------	-----------------------------	-------------------------	---------------------------	-------------------------------	------------------------------	-------------------------------	----------------------------	---------------------------	-------------------------------	----------------------------	---------------------------	------------------------------	-------------------------------	---------------------------	----------------------------	-----------------------------	------------------------	---------------------------------	-----------------------------	-----------------------------	-------------------------------	---------------------------	-------------------------------	----------------------------	-----------------------------	------------------------------	-----------------------------	--------------------------------	---------------------------------	-------------------------	----------------------------	-------------------------------	---------------------------	-------------------------------	-------------------------------	---------------------------------	-----------------------------------	-----------------------------	-------------------------------	-------------------------	-------------------------------	---------------------------------	-------------------------	----------------------------	----------------------------------	---------------------------	-----------------------------	---------------------------	-----------------------------	-----------------------------	---------------------------	------------------------------	----------------------------	-------------------------------	--------------------------	----------------------------------	--------------------------------	----------------------------	--------------------------------	--------------------------	------------------------------	-----------------------------	-----------------------------	-----------------------------	----------------------------	----------------------------	------------------------------	----------------------------	---------------------------	-----------------------------	------------------------------	------------------------------	------------------------------	------------------------------	-----------------------------

50 75 100 150 200 250 300 350 400 450 500 550 600 650 700 750 800 850 900 950 1000 1050 1100 1150 1200 1250 1300 1350 1400 1450 1500

F G H I J K L M N O POWER CODE P Q R S T U V W X Y Z

The range of reception is materially reduced by old, worn out tubes. But more important than that—your tubes lose their efficiency so gradually during a year that your ears accustom themselves to inferior tone quality and you do not realize how poorly the perfect broadcasts of elaborate programs from the studios are reproduced through your set. Replace your tubes once a year and notice the amazing difference.



# Our Compliments To Station CHNS

YES . . .

YOU will want a reliable Radio.

Broadcasting is becoming more efficient and better programmes are in store.

-You Want Accurate Reproduction-

Insist upon the Dealer showing you one of Our Models.

Manufactured in Canada for Canadian listeners by a Pioneer Radio Company with over fifty years' experience in Transmission Equipment, and makers of most of the larger Broadcasting Stations in Canada.

## *Northern Electric*

COMPANY LIMITED

86 Hollis Street - Halifax, N. S.





HARRY COCHRANE, *Orchestra Leader.*

## How to Report On Radio Signals

### Signal Strength (Readability)

- QSA means, "The strength of your signal is . . ."
- QSA1—Hardly perceptible; unreadable.  
 QSA2—Weak; readable now and then.  
 QSA3—Fairly good; readable but with difficulty.  
 QSA4—Good; readable.  
 QSA5—Very good; perfectly readable.

### The R-System of Audibility

- R1—Faint signals, just audible.  
 R2—Weak signals, barely audible.  
 R3—Weak signals, copiable (in absence of QRM).  
 R4—Fair signals, readable.  
 R5—Moderately strong signals.  
 R6—Strong signals.  
 R7—Good strong signals (such as copiable through interference).  
 R8—Very strong signals; can be heard several feet from phones.  
 R9—Extremely strong signals.

## Notice Radio Amateur Experimenters

If you operate or expect to operate an amateur radio station, The American Radio Relay League at Hartford, Connecticut, U.S.A., would be glad to send UPON REQUEST, a free copy of "Operating an Amateur Radio Station" (formerly the Rules and Regulations of the Communications Department). You will receive by return mail the above booklet of sixteen pages, containing a photo of A.R.R.L. headquarters station WIMK, and the following information:

- |                    |                                |
|--------------------|--------------------------------|
| The Amateur's Code | International Prefixes         |
| Operating Practice | Messages                       |
| Break-In           | Cable Count Check              |
| Relay Procedure    | A.R.R.L. Field Organization    |
| Word Lists         | Territorial Divisions          |
| Phone Procedure    | Officials and Appointments     |
| Underwriters Rules | The Official Phone Station     |
| A-1 Operator Club  | The Official Relay Station     |
| Emergency Work     | An Invitation                  |
| (QRR)              | Radio Communication Laws       |
| Q Code and Other   | Secrecy of Correspondence      |
| Abbreviations      | Federal Radio Commission Rules |
| Readability and    |                                |
| Audibility         |                                |

Write to F. E. Handy, Communications Manager,  
A.R.R.L., Hartford, Conn.



JOE MILLS, *Dance Orchestra Leader.*



# EATON'S . . .

features the New

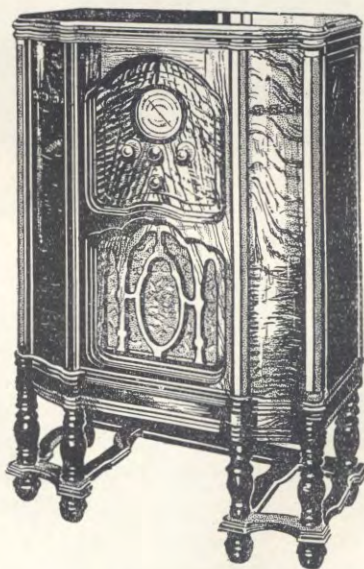
# General Electric Radios

In EATON'S Radio Department, on the Fifth Floor, you will find a representative selection of the popular General Electric Radios—with one of these modern, well-designed machines you may have hours of enjoyment in your home!

Model Illustrated:  
The G.E.  
ALL WAVE RADIO

Priced at  
Complete **\$154<sup>00</sup>**

An 8 tube console model that tunes from 13 to 555 metres, thereby bringing to you European and American short-wave stations as well as the regular broadcasts. Six leg console-cabinet of Renaissance style is finished in walnut with hand rubbed lacquer finish.



## Other Popular G.E. Models on Display!

A splendid choice of radios with the distinctive G.E. features—5 tube table model at \$49.50—5 tube console at \$69.50—8 tube All-wave table model at \$110.00, and several other popularly priced radios.

**THE T. EATON CO<sup>o</sup>**  
MARITIMES LIMITED

Eaton's—Fifth Floor





JERRY NAUGLER, *Dance Orchestra Leader.*

programs direct, we publish herewith, a list of British stations, with their frequencies and wave lengths, on which these programs are picked up for rebroadcasting purposes.

Call Sign	Frequency KC/S	Wave Lengths M
GSA	6,050	49.59
GSB	9,510	31.55
GSC	9,585	31.30
GSD	11,750	25.53
GSE	11,860	25.30
GSF	15,140	19.82
GSG	17,790	16.86
GSH	21,470	13.97

It must be explained that there are different times of the day most suitable for picking up the transmitters listed. The stations on the higher frequencies, commencing with GSH, being most suitable for the early morning

## Rebroadcasting from Great Britain

During the past year and a half, since the memorable Christmas Day broadcast of 1932, CHNS has rebroadcast many programs of the British Broadcasting Corporation and during the months of April, May and June, made this a daily feature, Sunday excepted, from half an hour to three hours. The British Broadcasting Corporation was very generous in its co-operation and gave the station unlimited assistance, thereby once more giving CHNS the honor of being the only Canadian station to daily bring to its listeners a program from the Old Country. Many letters were received in appreciation of this service and it is no doubt that, in the fall, a similar service will be given, when the schedule will allow.

For the special benefit of short wave listeners who would like to tune in on these British



GEORGE SINCLAIR, *Dance Orchestra Leader.*



reception and going up the list to GSA for night time reception. A little patient tuning and a few notes taken of the times of the day these signals can best be received, will be of value to the listener.

Further information containing exactly what will be broadcast, the stations used and time in Greenwich Mean Time, can be found in the current issue of the British Broadcasting Corporation's publication "World Radio," which can be found on any leading magazine stand.

We heartily recommend this excellent magazine to our listeners, for in addition to the programs listed, you will find splendid articles of interest to the short wave listener.



E. CHESLEY ALLEN, *Superintendent of the School for the Blind in Halifax. The organ of the School is heard on many programs.*

## Adding Pleasure To Nights at Home!

THE Service rendered by this Company in supplying an uninterrupted and constant electric Power supply assures you of better radio broadcast conditions and more pleasant home reception.

**NOVA SCOTIA LIGHT AND POWER CO.,  
LIMITED**

And Affiliated Companies





DR. F. H. MUNRO, *Superintendent of Education, Province of Nova Scotia.*

type of presentation and is proving very successful. Major Tibbs and the other members of the Committee have been untiring in their efforts to provide a series of talks fifteen minutes each night, during most of the year, on a number of subjects, including hobbies.

This Committee has been of very valuable assistance in bringing before the microphone every prominent person possible who has visited Halifax in the last six years and has obtained the co-operation of University Professors and others interested in educational subjects. This Committee "keeps a finger on the pulse," so to speak, of listeners in many walks of life and has enabled the station to give a service on many subjects that would otherwise not be available to the public.

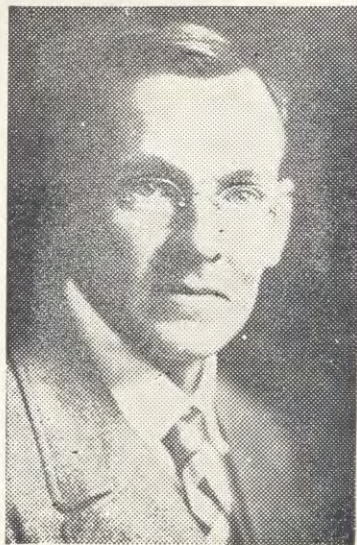
It is doing a most useful work and as far as can be ascertained, is the only Committee of its type in Canada working regularly with a broadcasting station, in framing a type of adult educational programs.

## Educational Features

CHNS, through the co-operation of Dr. F. H. Munro, Superintendent of Education, together with the following members of the Radio Committee of the National Council of Education, including Professor C. H. Mercer; Dr. F. H. Sexton; Gerald J. Redmond; Major Cunningham and Major Tibbs, has taken a leading part in educational broadcasting.

The Department of Education has been broadcasting to the schools regularly since 1926 and it is believed that it has the honor of broadcasting the first organized school broadcasting in North America.

Professor Mercer has conducted, for a number of years, a feature on Friday evenings, known as "The Radio Round Table Group," during which discussions on all sorts of subjects take place, in interview form. This is a novel



PROFESSOR C. H. MERCER, *Dalhousie University, Director of the Radio Round Table Group.*



# How Radio Waves are Divided

10 kcs. to	100	Long Waves, Fixed Point to Point, Transoceanic, High Power, Government and Commercial.	5365 to	6160	Relay Broadcast, Air, Foreign.
			6160 to	6425	Ships, Coastal.
			6425 to	7000	Air, Point to Point.
100 to	195	Fixed Point to Point and Maritime, Mobile, Ship to Shore.	7000 to	7300	Amateur.
			7300 to	8000	Point to Point.
196 to	245	Government.	8000 to	8900	Government, Point to Point.
245 to	283	Government and Point to Point.	8900 to	9600	Point to Point, Relay Broadcast.
283 to	390	Government.	9600 to	11000	Point to Point.
390 to	485	Maritime, Mobile, Aircraft, Government.	11000 to	13330	Government, Point to Point, Ships, Relay Broadcast.
485 to	550	Government.	13330 to	14000	Point to Point.
550 to	1500	Broadcast Band.	14000 to	14400	Amateur.
1500 to	1600	Marine Fire.	14400 to	16060	Point to Point, Relay Broadcast.
1600 to	1716	Television.	16060 to	18100	Ships, Government, Point to Point, Miscellaneous
1716 to	2000	Amateur.			
2000 to	2300	Television.	18100 to	21420	Point to Point.
2300 to	2500	Police, Fire, Miscellaneous.	21420 to	23000	Ship to Shore, etc.
2500 to	2750	Ship, Airway, Coastal.	23000 to	30000	Experimental Amateur.
2750 to	3100	Television, Aviation.	30000 to	100000	English Channel Experiments in Ultra-Short Waves.
3100 to	3500	Government, Air, etc.			
3500 to	4000	Amateur.			
4000 to	4535	Ship, Government, Foreign.	Above	100000	Heat Rays, Solar Rays, X Rays and Gamma Rays.
4535 to	5365	Point to Point Foreign, etc.			

## This Announcement Comes To You From Maritime Agencies, Limited

General Insurance Agents

156½ Hollis Street - Halifax

Telephone B-6720 D. K. McDermaid, Manager

WE wish to broadcast the fact that we are prepared to look after, promptly and efficiently, any orders you might entrust us with. Automobile, Fire, Marine and Casualty lines of all classes.

## We Solicit Your Business





DR. F. H. SEXTON, *Nova Scotia Technical College, Member of the Radio Committee, National Council of Education.*

Metres	Kc.	Call Sign	Station
49.18	6100	W3XAL	Bound Brook, N.Y. (relays WJZ)
49.1	6110	VUC	Calcutta, India
49.02	6120	W2XE	Long Island, N.Y. (relays WABC)
49.1	6110	VE9HX	Halifax, N.S. (relays CHNS)
48.86	6140	W8XK	East Pittsburg, Pa. (relays KDKA)
48.8	6147	VE9CL	Winnipeg
48.65	6167	XIF	Mexico City (Mexico)
48.35	6205	HKC	Bogota (Colombia)
48.2	6220	2RO	Rome (Italy)
48.05	6243	HKD	Barranquilla (Colombia)
46.69	6425	W3XL	Bound Brook, N.J. (relays WJZ)
46.67	6426	VE9BY	London, Ontario
45.38	6611	REN	Moscow
45.0	6667	FM8KR	Constantine (Algeria)
45.0	6667	TGW	Guatemala City (Central America)
43.75	6860		Radio Vitus, Paris
43.0	6970	EAR110	Madrid
41.7	7195	V51AB	Singapore (Malay States)
41.6	7211	EAR58	Teneriffe (Radio Club: Canary Islands)
41.5	7230	HB9D	Zurich (Radio Club) (Switzerland)
40.3	7443	HBQ	Radio Nations. Prangins (Switzerland)
39.7	7556	HKF	Bogota (Colombia)
39.4	7612	X26A	Nuevo Laredo (Mexico)
38.7	7797	HBL	Radio Nations, Prangins (Switzerland)
34.68	8650	W2XV	Long Island, N.Y.
34.68	8650	VE9BY	London, Ontario
31.58	9500	PRBA	Rio De Janeiro (Brazil)
31.55	9510	VK3ME	Melbourne (Australia)
31.54	9510	G5B	Empire Broadcasting Zones, 2, 4, 5
31.51	9520	OXY	Skamlebaek (Denmark)
31.48	9550	W2XAF	Schenectady, N.Y. (relays WGY)
31.38	9560	DIA	Zeesen
31.35	9570	SRI	Posen (Poland)
31.35	9570	W1XAZ	East Springfield, Mass. (relays WBZ)
31.3	9582	W3XAU	Philadelphia, Pa.
31.3	9582	HBL	Radio Nations, Prangins (Switzerland)
31.29	9585	G5C	Empire Broadcasting, Zone 3.
31.28	9590	VK2ME	Sydney (Australia)
31.25	9598	CT1AA	Lisbon (Portugal)
30.43	9869	EAQ	Aranjuez (Spain)
30.0	10000	.....	Belgrade (Yugoslavia)

## Principal Short Wave Radio Stations of the World

80 to 13 Meters

Metres	Kc.	Call Sign	Station
80.0	3750	2RO	Rome
62.56	4795	VE9BY	London, Ontario
62.5	4800	W2XV	Long Island, N.Y.
58.3	5146	PMY	Bandoeng (Java)
58.0	5172	OKIMPT	Prague (Czechoslovakia)
54.52	5502	W2XBH	Brooklyn, N.Y. (relays WCGU)
52.5	5714	HCJB	Quito (Ecuador)
51.22	5857	XDA	Chaputepec (Mexico)
50.6	5930	HKO	Medellin (Colombia)
50.26	5970	HVJ	Vatican State, Rome
50.0	6000	ZL3ZC	Christchurch (New Zealand)
50.0	6000		Bucharest (Roumania)
50.0	6000	RW59	Moscow
50.0	6000	EAR25	Barcelona, Radio Club, Spain
49.96	6005	VE9DR	Drummondville, (relays CFCF)
49.96	6005	HRB	Tegucigalpa (Honduras)
49.83	6020	W9XF	Chicago, Illinois (relays WENR)
49.8	6023	XEW	Mexico City (Mexico)
49.67	6042	W2XAL	Coytesville, N.J. (relays WRNY)
49.58	6050	GSA	Empire Broadcasting, Zones 4-5
49.5	6060	VO7LO	Nairobi (Kenya Colony)
49.5	6060	W8XAL	Mason, Ohio (relays WLW)
49.5	6060	W3XAU	Philadelphia, Pa. (relays WVAU)
49.43	6069	VE9CS	Vancouver, B.C.
49.4	6072	UOR2	Vienna
49.34	6080	W2XCX	Kearny, N.J. (relays WOR)
49.34	6080	W9XAA	Chicago, Ill. (relays WCFL)
49.22	6095	VE9GW	Bowmanville, Ont.



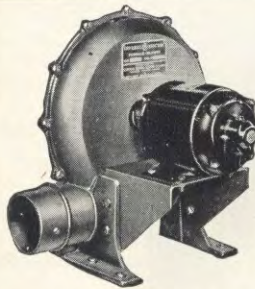
MAJOR W. E. TIBBS, *Chairman of the National Council of Education Radio Committee.*



Metres	Kc.	Call Sign	Station
29.3	10238	T14NRH	Heredia (Costa Rica)
28.98	10350	LSX	Buenos Aires (Argentina)
26.83	11180	CT3AQ	Fuchal (Madeira)
25.63	11700	FYA	Pontoise (France)
25.6	11720	VE9JR	Winnipeg
25.53	11750	GSD	Empire Broadcasting, Zones 1 and 4
25.5	11760	XDA	Chapultepec (Mexico)
25.4	11810	VE9GW	Bowmanville
25.4	11810	2RO	Prato Smeraldo, Rome
25.35	11853	VE9HX	Halifax, N.S. (relays CHNS)
25.34	11840	W9XAA	Chicago, Ill.
25.28	11865	GSE	Empire Broadcasting, Zone 2
25.27	11870	W8XK	East Pittsburg, Pa.
25.2	11905	FYA	Pontoise (France)
23.38	12830	.....	Rabat (Morocco)
20.5	14630	XDA	Chapultepec (Mexico)
19.81	15140	GSF	Empire Broadcasting, Zone 5
19.9	15075	T14NRH	Heredia (Costa Rica)
19.84	15120	HVJ	Vatican State, Rome
19.73	15200	DJB	Zeesen (Germany)
19.72	15210	W8XK	East Pittsburg, Pa. (relays KDKA)
19.68	15244	FYA	Pontoise (France)
19.56	15340	W2XAD	South Schenectady, N.Y.
16.9	17750	HSP	Bangkok (Siam)
16.88	17770	GSG	Empire Broadcasting, Zone 2
16.87	17780	W3XAL	Bound Brook, N.J.
16.57	18105	W9XAA	Chicago, Ill. (relays WCFL)
14.47	20730	LSY	Buenos Aires (Argentina)
13.97	21470	GSH	Empire Broadcasting, Zone 3
13.92	21540	W8XK	East Pittsburg (relays KDKA)



MAJOR A. W. CUNNINGHAM, *Member of the Radio Committee, National Council of Education.*



## LET US DEMONSTRATE GENERAL ELECTRIC FURNACE BLOWER

Thermostatic control eliminates hundreds of steps to the basement each day.

Start now to profit from the savings made possible by the GENERAL ELECTRIC BLOWER. Come in for a demonstration, or 'phone and a representative will call at your home.

# R. E. ARCHIBALD

Sole Agents for Halifax



## A Few Pointers for New Listeners on Short Waves

Don't expect to find stations on all parts of the dials. Short wave stations are widely separated except in a very few places.

Don't expect stations to tune broadly. Most distant stations tune very sharply.

Don't expect to hear the world the first day you tune. It requires some knowledge of tuning to get excellent results.

Don't expect to hear a station simply because it is on the air. Many things govern short wave reception.

Don't get discouraged. If reception is poor one day, it may be fine the next.

Don't skim over the dials. Tune slowly.

Don't pass up any weak signals. Ofttimes a weak program can be brought out plainly by careful tuning.

Don't tune for stations when they are not on the air. Use a station list.

Don't get into the habit of tuning haphazardly. Learn where stations should be found on the dials of your particular receiver.

Don't tune above 33 meters for distant stations in daylight.

Don't tune below 25 meters for distant stations after dark.



THE LYRIC TRIO

Left to right—ALLAN McIVER, pianist and arranger; LIONEL DAUNAIS, baritone; MISS ANNA MALENFANT, contralto and LUDOVIC HUOT, tenor. The Lyric Trio is exclusive to the Canadian Radio Commission and is heard weekly in the "One Hour With You" and "Under the Bridges of Paris" programs.





HARRY DEAN, Principal of the Maritime Academy of Music, well known in Maritime musical circles.

### Notice to all Canadian Listeners

We would call to the attention of all our listening friends the fact that the Radio Act, amended at the last session of the House of Commons, now demands that listeners pay a yearly license fee of \$2.00 for every radio set they own. Radio license fees are due on the 1st of April of each year and run for a period of twelve months and can be obtained from the Post Office, Radio Dealers and Radio Inspectors.

Be sure to have your radio license tacked up or kept near your radio set, so that it can be produced if the inspectors call around.

We would suggest that if you have more than one radio and do not intend to use the extra set, that charitable organizations could probably find a use for it, otherwise you may be paying license fees for sets you are not using.

## You Take No Gambling Chance When You Feed Fasterfat!

FASTERFAT WHITE FISH MEAL with its high Protein content, makes it extremely economical for ration blending and increasing the productivity of dairy cows and poultry.

FASTERFAT WHITE FISH MEAL has a high mineral content which is so essential to correct ration balance.

Fasterfat Protein and mineral content is guaranteed for your protection.

INSIST ON FASTERFAT WHITE FISH MEAL AND FASTERFAT COD LIVER OIL.

# FASTERFAT LIMITED

Halifax - Nova Scotia

Subsidiary of Maritime-National Fish Limited

HALIFAX

»

»

DARTMOUTH



S. CUNARD & CO. LTD. "Heat Merchants Since 1835"





IFAN WILLIAMS, of the Halifax Conservatory of Music, whose orchestra has given much pleasure at various times.

---



---

## CHNS Broadcast Memories of 1933

January 1—6.30 p.m. Talk to North America by Right Honorable R. B. Bennett.

January 27—10 p.m. R.C.R. Band from London, Ontario (CRC).

February 7—9 p.m. H.M. Canadian Grenadier Guards Band from Montreal.

March 22—11 p.m. Organ Recital by Jesse Crawford from Ottawa.

March 24—9.30 p.m. Canadian Junior Playoffs, Moncton vs Royals from Montreal.

April 11—12.30 a.m. Allen Cup Senior Hockey Finals from Vancouver.

May 18—4.30 p.m. United Empire Loyalist Program from Saint John, New Brunswick.

May 21—12 noon. Acadia University closing, Wolfville.

May 31—10.35 a.m. Rebroadcast the Derby.

—11 a.m. H. M. The King, Opening Economic Conference.

July 9—11 p.m. Maid of the Mountains, Toronto—CRC.

July 13—5.30 p.m. General Italo Balbo's arrival at Shediac, New Brunswick, by air.

August 22—8.15 p.m. Nova Scotia Provincial Election results.

August 28—11 p.m. Andrĕ Kostelanetz Presents—CBS.

August 31—9.30 p.m. Hands Across the Border—NBC.

September 3—11 p.m. H. M. Scots Guards Band—CRC.

September 8—9.30. British Commonwealth in Review, Toronto—CRC.

October 2—4 p.m. Springhill-Halifax Baseball Game.

October 5—10 p.m. Broadcast from Montreal Radio Show—CRC.

October 8—10 p.m. Talk by His Eminence Cardinal Villeneuve.

October 15—11.45. Wesley Choir from Fort William—CRC.

November 5—4 p.m. 1st of the Series of New York Philharmonic Concerts from the Columbia Broadcasting System.

November 5—11 p.m. Poppy Day Appeal by His Excellency The Right Honorable The Earl of Bessborough.

November 6—9.15. Talk by George McManus on "Bringing Up Father."

November 10—4 p.m. Miss Agnes McPhail, M.P. Talk on World Affairs.

November 11—11.45 a.m. Remembrance Day Program, Ottawa.

November 12—3 p.m. Nova Scotia Home for Colored Children—Broadcast.

November 19—3.30 p.m. Grenadier Guards Band, Montreal.

November 23—10 p.m. Band of the 22nd Regiment, Quebec—CRC.

November 30—9 p.m. Theatre Arts Guild Drama.

December 7—10 p.m. Band of Princess Louise Fusiliers—CRC network.

December 23—3 p.m. First in the Series of Metropolitan Opera Broadcasts.

—6.15 p.m. Santa's Christmas Party and Goodfellows' Auction.

December 31—10 p.m. New Year's Message to Canada by the Right Honorable R. B. Bennett.



GERALD J. REDMOND, Department of Education, announcer of Provincial educational programs.



## The Following Programmes Have Received the Most Favorable Comment from the Listening Audience, in Letters and Reports Received

Harbor Lights, with its Nova Scotian seafaring atmosphere, featuring Mrs. Jack Redden, at the organ; Clyde Connors, the Musical Sailor and Viola Franks, the Sailor Lass.

The World in Review, a weekly explanation of world events, given by Doctor H. L. Stewart, Professor of Philosophy at Dalhousie University.

Daily News Broadcast, from the Herald Offices—a service greatly appreciated by out-of-town listeners.

The Story Teller, with true stories of Nova Scotia's history and outstanding true adventures.

The Radio Round Table Group, The National Council of Education features and other educational programs.

The rebroadcasting of the British Broadcasting Corporation's programs.

Dance Orchestras, with local organizations receiving about 3-1 votes to outside organizations.

Old time orchestras and Cotter's Saturday Night.

Music, Chatter and Song.

One Hour With You.

Under the Bridges of Paris.

Church Services.

Children's Period with Pollyanna and Uncle Jerry.

Hour of Gaiety and Romance.

Gentleman Jim.

Rex Battle's Orchestra.

Parade of the Provinces.

The Operas.

Carefree Harmony.

Acadian Serenade.

While Hearts Are Singing.

Hands Across The Border.

Hockey Broadcasts.

Noon and Early Evening Recorded Programs.

Popular Piano Programs.



JOHN MCCURDY, *radio auctioneer extraordinary for the Goodfellows' Club.*

Lives of Composers.

Melody Lane.

Hawaiian Bound.

Gateways Four.

Masters of Music.

Melody Master.

Jack Dale.

Yodelling Cowboy.

Beautiful Lady.

# We Specialize in Nova Scotia Coal and Coke!

**G. B. GOODWIN & CO., LTD.**  
WHOLESALE AND RETAIL COAL MERCHANTS

OFFICE AND YARD · 155 KEMPT ROAD  
PHONES: L 1446 · L 1450

HALIFAX, N. S.





HELEN MORTON, the owner of the lovely voice from Regina.

730	CJCA	Oliver, Alta.
	CFPL	London, Ont.
	CKAC	St. Hyacinthe, Que.
780	CHWK	Chilliwack, B.C.
840	CFQC	Saskatoon, Sask.
	CRCT	Bowmanville, Ont.
880	CFJC	Kamloops, B.C.
	CRCO	Hawthorne, Ont.
890	CJIC	Sault Ste. Marie, Ont.
910	CJAT	Trail, B.C.
	CRCM	La Prairie, Que.
930	CFAC	Calgary, Alta.
	CKPR	Port Arthur, Ont.
	CFCH	North Bay, Ont.
	CKPC	Brantford, Ont.
	CFLC	Prescott, Ont.
	CHNS	Halifax, N.S.
950	CRCS	Chicoutimi, Que.
960	CKY	Winnipeg, Man.
1010	CKCD	Vancouver, B.C.
	CKWX	Vancouver, B.C.
	CHWC	Pilot Butte, Sask.
	CKCK	Regina, Sask.
	CHML	Mount Hamilton, Ont.
	CKCO	Boom Island, Que.
	CKIC	Wolfville, N.S.

## List of Broadcasting Stations in Canada

### By Frequencies

Corrected to September 1, 1934

#### PRIVATE COMMERCIAL STATIONS

Frequency in Kilocycles	Call Sign	Location of Station
540	CJRM	Belleplaine, Sask.
550	CFNB	Fredericton, N.B.
580	CKUA	Edmonton, Alta.
	CHRC	Quebec, Que.
	CKCL	Toronto, Ont.
600	CJOR	Sea Island, B.C.
	CFCO	Chatham, Ont.
	CFCF	Montreal, Que.
630	CKOV	Kelowna, B.C.
	CJGX	Yorkton, Sask.
	CFCY	Charlottetown, P.E.I.
690	CJCJ	Calgary, Alta.
	CFRB	Twp. of King, Ont.



JEAN HAIG, another radio star from Toronto.



Frequency in Kilocycles	Call Sign	Location of Station
1030	CFCN	Strathmore, Alta.
	CKLW	Sandwich South Twp., Essex County, Ont.
1050	CRCK	Charlesbourg, Que.
1100	CRCV	Lulu Island, B.C.
1120	CKOC	Fruitland, Ont.
	CHLP	Montreal, Que.
	CHSJ	Saint John, N.B.
1200	CHAB	Moose Jaw, Sask.
	CKTB	Port Dalhousie, Ont.
1210	CKBI	Prince Albert, Sask.
	CKMC	Cobalt, Ont.
	CKCH	Hull, Que.
	CHNC	New Carlisle, Que.
1230	CJOC	Lethbridge, Alta.
1240	CJCB	Sydney, N.S.
1260	CFTP	Edmonton, Alta.
1310	CJKL	Kirkland Lake, Ont.
	KCCV	Quebec, Que.
	CJLS	Yarmouth, N.S.
	CHCK	Charlottetown, P.E.I.
1370	CKCW	Moncton, N.B.
1390	CJRC	Middlechurch, Man.
1410	CKFC	Vancouver, B.C.
	CKMO	Vancouver, B.C.
1420	CKGB	Timmins, Ont.
	CKNC	Toronto, Ont.
1450	CFCT	Victoria, B.C.
	CKX	Brandon, Man.
1500	CHGS	Summerside, P.E.I.
1510	CKCR	Waterloo, Ont.
	CFRC	Kingston, Ont.
6150	CJRO	Middlechurch, Man.
11720	CJRX	Middlechurch, Man.



MARTIN LIVINGSTONE, Advertising Manager of the Halifax Herald, creator of "Greetings from Canada's Atlantic Playground" and "Halifax Days" programs.

## Musical Goods of All Kinds and Radios

Halifax home of the Famous Dominion Pianos and other makes. Records, Lending Library, Latest Magazines.

Washing Machines and Electric Refrigerators.

Victor and Westinghouse Radios and Combinations.

Call and hear them demonstrated.

# McDONALD MUSIC COMPANY

393 Barrington Street  
HALIFAX, N.S.

C. W. SPRAGUE  
President

Listen In for Radio Broadcast  
Every Morning

G. W. SPRAGUE  
Vice-President

# GLOBE LAUNDRY LIMITED

50 Buckingham Street

HALIFAX

ODORLESS CLEANING HYGIENIC  
BRITISH AND BEST

DRY CLEANING  
DEPARTMENT

Telephone B-6491—B-8484





DR. H. L. STEWART, Professor of Philosophy, Dalhousie University, whose talks, under the auspices of the *Halifax Herald*, and latterly also by the Canadian Radio Commission, are known throughout Canada.

---

## HALIFAX HERALD FEATURES

# The World in Review and News Items

In these fast changing times, with dispatches being printed daily from all over the world, the "man in the street" has a difficult time keeping up with the ever changing map and history. In fact, unless one is a deep scholar, it is impossible to be familiar with the world situation. With this in mind, the *Halifax Herald* created a feature on Sunday nights, some three years ago, which is now nationally known as "The World In Review," by Dr. H. L. Stewart, Professor of Philosophy, at Dalhousie University.

Every Sunday night, for half an hour, Dr. Stewart reviews the news of the world that has appeared in the *Halifax Herald* and the *Halifax Mail*, and also the latest dispatches received over the wires. This feature enables

all who care to listen, to receive a digest of the world situation, in language thoroughly understood and appreciated.

This feature became popular from the very first broadcast and today is still one of the leading broadcasts of the week. During the past year, the Canadian Radio Commission has also had Dr. Stewart give a series of talks on Canadian Events, along the same lines and he is heard over the national network.

In addition to this weekly feature, the daily broadcasts of news items from the office of the *Halifax Herald*, at noon and 7.30, are of particular service to our out-of-town listeners. The voices of Bob Rankin, Frank Doyle, Barbara MacLeod, Ronald Hart, are as well known and looked for as any feature on the air.

## Harbor Lights

In addition to the broadcasting of news, the *Halifax Herald* and the *Halifax Mail* have



MRS. JACK REDDEN, popular organist and musical director of "Harbor Lights."



# Your Car . . .

will respond quicker, develop full power and operate smoother, if you use IMPERIAL 3 STAR Gasoline and IMPERIAL MARVELUBE MOTOR OIL.

MANUFACTURED AT HOME

## IMPERIAL OIL LIMITED

# THE NOVA SCOTIA SECURITIES CO.

STOCKS - BONDS - UNLISTED SECURITIES

SPECIALISTS IN MINING SECURITIES

DIRECT PRIVATE WIRE CONNECTIONS TO LEADING EXCHANGES

*Publishers of the "Market Reporter"*

*Copies Forwarded Free*



Office and Boardroom - 155 HOLLIS STREET, HALIFAX, N.S.



## Maritime Life

*The Only Life Assurance Company  
With Head Office in the Maritimes*

HEAD OFFICE: HALIFAX CAN.

KEEP YOUR MONEY AT HOME

A. R. FRASER, C.L.U., *Manager for Nova Scotia*  
Page Building, Barrington Street, HALIFAX

C. C. EHRHARDT, *Manager for New Brunswick*  
Room 1, Imperial Block, Moncton, N. B.

WILLIAMS & BENTLEY LTD., *Managers for P. E. Island*  
Charlottetown, Prince Edward Island





PHOTO BY CLIMO

CLYDE CONNORS, featured on "Harbor Lights" program as "The Musical Sailor."

a very popular program. About two years ago, a young tenor was added to "The Crew." This young man, a Haligonian, was practically unknown to the radio audience, except for an occasional broadcast. He has been on the program ever since, singing under the name of the "Musical Sailor" and after two years, is as popular as ever. Some months ago, another member was added to the crew, in the person of a young soprano, who was introduced to the radio audience as "The Sailor Lass." This little group, under the direction of Mrs. Redden, produces what is judged by the radio audience from letters and comments received, as the most popular feature on the air today, over this station. Every week requests are received for special numbers and it seems the longer "Harbor Lights" runs, the better it is enjoyed.

## HALIFAX HERALD FEATURES

### Harbor Lights (Cont'd)

encouraged the use of local talent and are glad to see that the listening audience has shown great appreciation for musical programs sponsored by them. During the early life of CHNS, one of the most popular programs on the air was known as "Heart Songs" and it is spoken of even after a period of three years, as one of the outstanding musical features of this station.

Three years ago, the *Halifax Herald* instituted an organ program with a sea-faring atmosphere, under the title of "Harbor Lights." This program at first consisted entirely of organ numbers, with the reading of poetry. Later, a baritone was introduced and the feature continued to grow over a period of a year, into



PHOTO BY CLIMO

VIOLA FRANKS, latest member of the "Harbor Lights" crew, known on the air as "The Sailor Lass."



# 3-S TAXI

31 Sackville Street  
Halifax, N.S.

**SAFETY  
SERVICE  
SATISFACTION**

COURTEOUS DRIVERS  
24 HOUR SERVICE

+

Phones: B-6328—B-9614

100%

**Quality  
Style  
Service!**

**ROBERT STANFORD  
LIMITED**

Ladies' and Gentlemen's Tailors  
Breeches Makers, Custom Shirts

158 Hollis Street Halifax, N.S.

**Insure  
In Sure  
Insurance!**



**A. J. Haliburton & Co.**

St. Paul Building  
HALIFAX

**MARITIME  
FINANCE  
LIMITED**

**LOANS**

**\$50 to \$500**

Confidential loans to salaried men and women. Reasonable rates.

Loans repayable monthly over period of a year. All applications considered. Apply or phone for full particulars.

**MARBLE BUILDING**

452 BARRINGTON STREET  
HALIFAX, N.S. Phone B-8371





DOROTHY HENRION,  
"Pollyanna" of the  
Children's Hour.

## The Halifax Herald's Children's Hour

During the past eight years, CHNS has kept going one feature which seems to grow in popularity. It is the Children's Hour, under the direction of a young lady known on the air as Pollyanna.

Every Wednesday night, for half an hour, the children receive an entertaining program and also the reading of their birthdays and birthday greetings.

During the latter part of July, a new lease of life was obtained by the Children's Hour in the broadcasting each Wednesday of a program known as Uncle Jerry and His Safety Club. In one week, over 8,000 children have joined the Safety Club and promised to be careful when they cross the street. The work of conducting the Safety Club has meant that two and sometimes three, stenographers have been working full time making out cards and mailing the badges which every member of the Safety Club is expected to wear.

This Safety Campaign will be carried out for one year, so that in addition to hearing birthday greetings, the children will be reminded once a week, of the Safety slogan and it is hoped that this campaign will lessen the number of accidents that have been so prevalent in the past.

Parents are invited to write to Pollyanna, giving the birthday dates and any details they care to send in, about the children, as it is our desire to make this half hour program of the utmost enjoyment to our junior listeners.

Send us their names and birthdays and no little child will be overlooked.



MRS. ANNA DEXTER,  
Directress of the  
"Woman's Radio  
Institute."

## The Woman's Radio Institute

Like a newspaper, which has various departments for different members of the family, a radio station divides its time during different parts of the day to suit a different type of audience. It has been found, over a period of years, that the women of the house enjoy their radio as much in the morning as at any other time during the day. Since 1927, Mrs. Anna Dexter has been conducting a program known as "The Woman's Radio Institute," which is designed to give recipes and other useful household information and topics of feminine interest, during the period of the day when it is most acceptable.

The audience of the Woman's Radio Institute is varied and many. Every day letters and telephone calls are received, asking how to make this or that and how to accomplish many of the things that go towards successful housekeeping.

To conduct a program of this type is a most trying and severe task, but we believe that in Mrs. Dexter we have a Directress who always gives her best and in whom a large audience has particular faith. In fact, the number of sponsors who stick to the Woman's Radio Institute, year in, year out, proves beyond doubt that the message is going out.

As the years go by, Mrs. Dexter is proving to an ever increasing number of listeners, her sincerity and wide knowledge of subjects of which women like to hear, during their own listening time. She has proven her worth many times, to her feminine audience.



## Metropolitan Stores

Limited  
Barrington Street  
Gottingen Street

## Where Your Dollar Buys More

Ladies' and Misses' Wear, Men's and Boys' Wear, Infants' Wear, Hosiery, Lingerie, Toilet Goods, Notions, Millinery, Hardware, Enamel Ware, Aluminum Ware, Electrical Supplies, Crockery, China, Glassware, Food Products and Domestic Goods

## ON YOUR RADIO

—you hear broadcasts of Sports events in which the greatest stars of Sport are taking part.

## AT OUR STORE

—you will find Sports equipment identical with that used by these great athletes.

No matter what line of Sport you are interested in—we can supply you with the finest equipment you can obtain for the amount you wish to pay. The needs of the novice and the finished player have both been anticipated.

**CRAGG BROS.**  
COMPANY, LIMITED  
Barrington St. at George  
HALIFAX - NOVA SCOTIA

## Congratulations

to station C.H.N.S.  
on attaining another  
year of useful service  
in this community.

**WILLIS**  
PIANO COMPANY  
LIMITED

40 Sackville Street, Halifax  
FINE PIANOS                      RADIOS

## If It's Washable, We'll Launder It!

CURTAINS, blankets, rugs, quilts, pillows, motor rugs, car covers . . . we launder all by modern methods which restore their original beauty and serviceability,

*And we bring them back without delay.*

Call L-2300

**HALIFAX**  
Steam Laundry  
81-85 West Street  
HALIFAX





## Who Hears and Where

In the above map, dots are used to define points from which CHNS has received listener response. No attempt has been made to dress it up. There is no need to, for while CHNS has been picked up farther south than Washington and farther west than Hamilton, its own particular territory is in the Province of Nova Scotia and in the districts where most listeners are located.

In addition to the audience reached by the long wave station, those with short wave sets hear the experimental short wave station VE9HX over tremendous distances, both day and night.

With further improvement in equipment, it is hoped to considerably enlarge this field of usefulness. It is interesting to note, however, that over one-third of the listeners' receiving sets in the Province of Nova Scotia are located within an area of not more than ten miles from our antenna. One-third more of the sets are within a radius of about sixty miles.



# Good Printing At Low Prices!

We Specialize in Letterheads, Envelopes, Cards,  
Office Forms, Circulars, Posters, Inserts,  
and Commercial Printing of all kinds.

## Mr. Business Man:

Do you know that a well printed DIRECT MAIL  
promotion will help to pick off more business  
this Fall and Winter. We do it.

Telephone **HARBOR 803**

For Quick Service, Reliable and Economical Work . . . For  
Dependable, Result-Getting Printing of all kinds, consult—

# THE INDEPENDENT PRINT

A. F. Walker, Proprietor

17 DUNDAS STREET

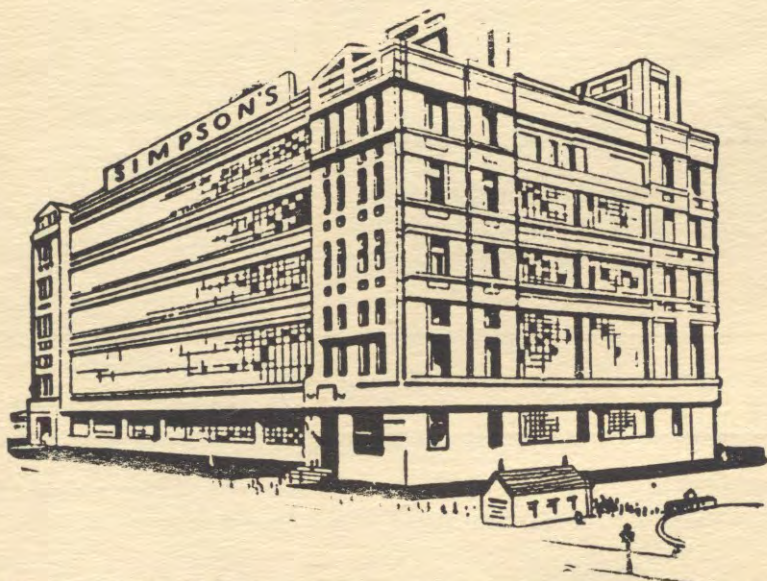
DARTMOUTH

N. S.



# SIMPSON'S

is constantly on the alert to bring you the latest developments of the Radio World, and to bring them, FIRST. . . Mindful of SIMPSON Leadership in the Realm of Radio, this proud distinction will be zealously guarded



Not only for Radio, but in every department of this great department store

"YOU'LL ENJOY SHOPPING AT SIMPSONS"

THE ROBERT **SIMPSON** EASTERN LIMITED  
HALIFAX - NOVA SCOTIA