

MAX ATIENZA  
TAGALOG BROADCASTER



PAUL PIPKIN - INSPIRATIONAL SPEAKER



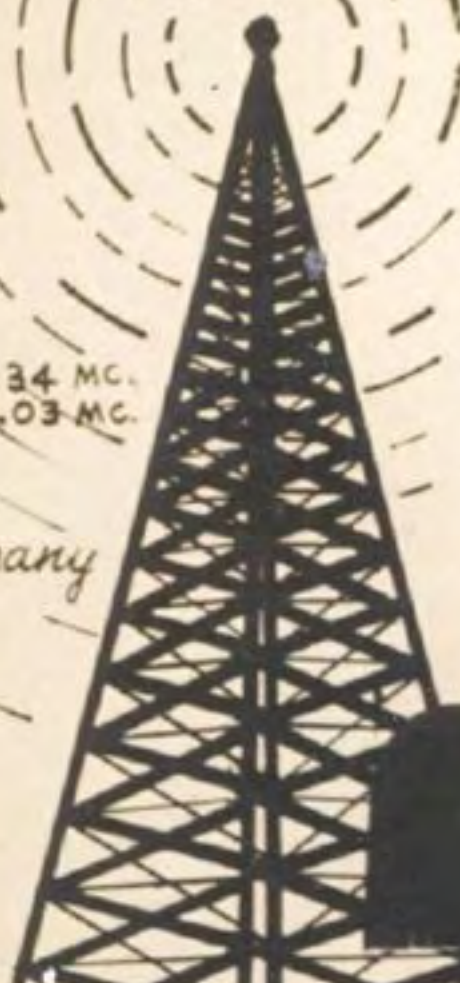
**DZAS**

**680 Kc.**

3.34 MC.  
6.03 MC.

*Far East  
Broadcasting Company*

MANILA P.I.



DICK BRONSON • JOHN WHEATLEY • RILEY KAUFMAN  
THREE OF THE REGULAR NEWSCASTERS



FROM THE MUSIC STAFF.....

ESTHER CUMMINS • HELEN SMITH • FLOSSIE KAUFMAN • RILEY KAUFMAN



EDDIE KIUNISALA • MIKE LACANILAO  
• REQUEST PROGRAMS •

*Some of the Staff members frequently heard on DZAS*

# the Signal

Organ of the FAR EAST BROADCASTING CO., INC.

Manila, Philippines

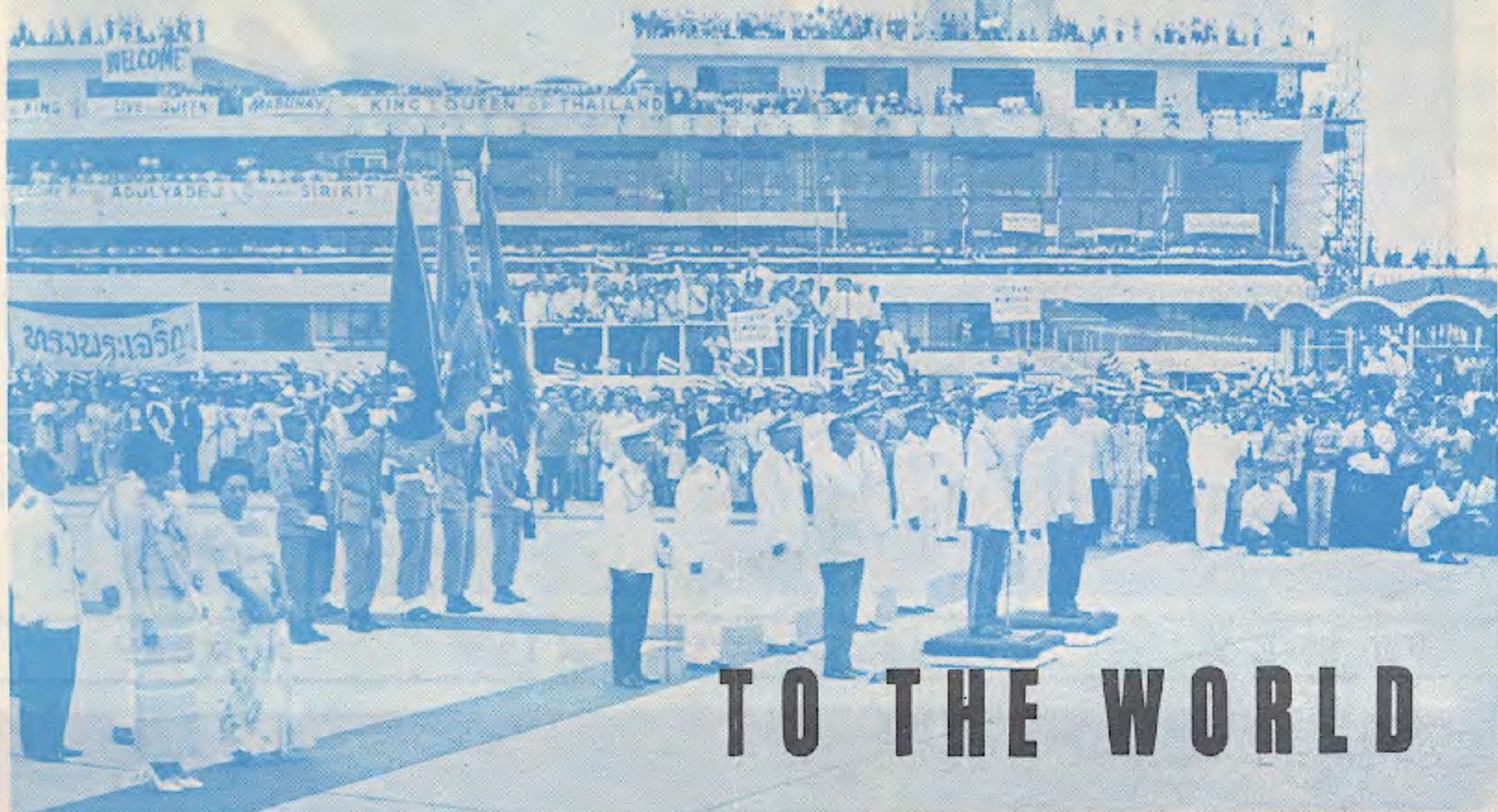
VOLUME V

NOVEMBER-DECEMBER 1963

NUMBER 6



# REPORTING WORLD NEWS



## TO THE WORLD

by Eric Parsons

"From the capitals of the world, here is the news." This familiar opening statement is heard on many of our newscasts throughout the day on local and overseas outlets of FEBC. From our early morning English newscast at 6:00 a. m. (local time) to our final English overseas newscast at 11:30 p. m. on shortwave, we seek to keep our listeners posted on latest happenings around the world.

In radio, one must bear in mind the listening habits of the audience; and, in news service by radio, the adequacy of news sources. For the latter, FEBC has the worldwide news-gathering facilities of the Associated Press bringing news from outside the Philippines. On the local scene, FEBC is continually looking for ways of tapping more immediate sources.

The matter of listening habits presents a problem for FEBC in its unique worldwide service. The best listening times in the local Philippine are can be rather "cut and dried," as the saying goes; that is, we can figure on times in the early morning before many folks go to work, and then at noon, and again in the early evening hours as being the best times to get the attention of the audience. But on overseas broadcasts, we have to keep in mind that the early morning audience in India (one of our target areas) will be listening after our day in the Philippines is well underway. Our noon hour does not coincide with the noon hour in India. And the same problem exists in the evening hours. This fact is complicated further by the varied times obtaining in Burma, Cambodia, Indonesia, and Australia (to mention a few). However, we attempt to beam news at suitable times of the day which reaches these areas.

FEBC has newscasts in Pilipino

(the national language of the Philippines), in Indonesian, and (until recently) in the Chinese dialect of Amoy. Again limitations in personnel who speak other languages carried by our stations prevent our expanding in this field. Perhaps in the future FEBC will have newscasts in Hindi, Japanese, Cambodian, Thai, and other languages.

Manila is a crossroads of the world, and very often heads of state include the Philippines in a Far East tour. A few who have been here in recent months are Prince Akihito and Princess Michiko of Japan, President Lopez Mateos of Mexico; King Bhumipol Adulyadej and Queen Sirikit of Thailand; and President and Mrs. Heinrich Luebke of West Germany. These and other visiting dignitaries of various nations have afforded FEBC opportunities to cover the events in the interest of public service.

In an effort to provide authoritative reports, FEBC frequently sends members of the news staff to cover important gatherings, such as the opening and closing ceremonies of the Manila summit conference which ended in the formation of Maphilindo in August and press conferences of VIP's.

FEBC has received expressions of appreciation for its news coverage from individuals in government and business agencies, as well as from listeners outside the Philippines. One recent letter pointed out that the quality and scope of FEBC news coverage is enjoyed by diplomatic personnel in this country. Another serving in the U.S. Foreign Service wrote from Liberia, West Africa, stating in regard to our morning newscast at 7:30 a.m. (Philippine time): "That particular report had later developments on Africa than I had heard two hours earlier on local African roundups, and obvious-



ly its coverage of Asia and the Philippines was something you cannot get any place else."

Another phase of FEBC's news department activity is giving the background behind the news, or commentary on news developments. For Philippine listeners, FEBC gathers materials on current problems in and around Manila and throughout the Philippines; thus, we give a fuller picture of causes and effects of stories spotlighted in newscasts. Much material of this nature regarding events on the international news sphere is released on occasional "Accent" programs which are coupled with news summaries several times daily, and in the program "Page Two."

FEBC Manila has gained a reputation for accuracy in reporting the news. The credibility of a radio station places on it a heavy responsibility, for opinions are formed and decisions are made on the basis of information released over the air. Sensing this responsibility, the news staff seeks to assure themselves that the listeners receive that which uplifts and builds FEBC's presentation of the Gospel of Christ in this context comes with added impact, and we trust with eternal benefit to all who listen.



# 1964

## JANUARY

S	M	T	W	T	F	S
			1	2	3	4
5	6	7	8	9	10	11
12	13	14	15	16	17	18
19	20	21	22	23	24	25
26	27	28	29	30	31	

## FEBRUARY

S	M	T	W	T	F	S
						1
2	3	4	5	6	7	8
9	10	11	12	13	14	15
16	17	18	19	20	21	22
23	24	25	26	27	28	29

## MARCH

S	M	T	W	T	F	S
1	2	3	4	5	6	7
8	9	10	11	12	13	14
15	16	17	18	19	20	21
22	23	24	25	26	27	28
29	30	31				

## APRIL

S	M	T	W	T	F	S
			1	2	3	4
5	6	7	8	9	10	11
12	13	14	15	16	17	18
19	20	21	22	23	24	25
26	27	28	29	30		

## MAY

S	M	T	W	T	F	S
					1	2
3	4	5	6	7	8	9
10	11	12	13	14	15	16
17	18	19	20	21	22	23
24	25	26	27	28	29	30
31						

## JUNE

S	M	T	W	T	F	S
	1	2	3	4	5	6
7	8	9	10	11	12	13
14	15	16	17	18	19	20
21	22	23	24	25	26	27
28	29	30				

## JULY

S	M	T	W	T	F	S
			1	2	3	4
5	6	7	8	9	10	11
12	13	14	15	16	17	18
19	20	21	22	23	24	25
26	27	28	29	30	31	

## AUGUST

S	M	T	W	T	F	S
						1
2	3	4	5	6	7	8
9	10	11	12	13	14	15
16	17	18	19	20	21	22
23	24	25	26	27	28	29
30	31					

## SEPTEMBER

S	M	T	W	T	F	S
		1	2	3	4	5
6	7	8	9	10	11	12
13	14	15	16	17	18	19
20	21	22	23	24	25	26
27	28	29	30			

## OCTOBER

S	M	T	W	T	F	S
				1	2	3
4	5	6	7	8	9	10
11	12	13	14	15	16	17
18	19	20	21	22	23	24
25	26	27	28	29	30	31

## NOVEMBER

S	M	T	W	T	F	S
1	2	3	4	5	6	7
8	9	10	11	12	13	14
15	16	17	18	19	20	21
22	23	24	25	26	27	28
29	30					

## DECEMBER

S	M	T	W	T	F	S
		1	2	3	4	5
6	7	8	9	10	11	12
13	14	15	16	17	18	19
20	21	22	23	24	25	26
27	28	29	30	31		



## from the editor's desk

Christian Radio City Manila has seen quite a bit of movement in and out, personnel-wise, during recent days. Topping the list of those who have passed through were FEBC President Robert Bowman and FEBC Vice-President William Roberts. It was the second time that both of these co-founders of FEBC (along with John Broger) have been together at CRCM in the long years of their association.



Bud Jillson and his family have returned to the U. S. A. for furlough, leaving the Printing and Offset Department in the hands of Glynn Dean. The John Hubbards and their four children (including twin boys) have arrived, with Mr. Hubbard taking the position of Music Director for FEBC Manila. And just after the New Year, the Kaare Wilhelmsens and their two boys departed for their ministry at FEBC Singapore, after several months of preliminary training in Manila.

On December 14th, Max Atienza returned after 11 months of deputation in the U. S. A., accompanied by his wife, Sarah, and their youngest child Lydia.



\*\*\*\*\*

From time to time, tragedy strikes close to us. Such was the case when a fire broke out in nearby Marulas, Bulacan. Several people lost their lives during the blaze, and a number were injured, with several hundred losing their homes. It was the privilege of FEBC Manila to help one family who suffered loss of their home and their earthly goods, collecting clothing for the family of a policeman from nearby Valenzuela, Mr. Francisco M. Nicolas.



As you read this issue of the SIGNAL, another year will have ended - and a new one just begun. 1963's opportunities are gone, and what we did with those opportunities is now history.'

Much is always said and written about New Year's resolution - "turning over a new leaf" - "starting all over again" - etc. But in order to fulfill our resolutions - or "turn over a new leaf" - or "start all over again," we need to be changed from the inside out. And in order to undergo this change, one must do it God's way. "THEREFORE IF ANY MAN BE IN CHRIST, HE IS A NEW CREATURE: OLD THINGS ARE PASSED AWAY; BEHOLD, ALL THINGS ARE BECOME NEW" (11 Corinthians 5: 17).

Fred Feria, Editor

**COVER PICTURE:** On our front cover, News Director Eric Parsons and Mike Lacanila look over items relating to election coverage last November.

Republic of the Philippines  
Department of Public Works and Communications  
BUREAU OF POSTS  
Manila  
**SWORN STATEMENT**  
(Required by Act 2580)

The undersigned, Policarpo A. Feria, editor of THE SIGNAL, published bi-monthly in English, at Karuhatan, Valenzuela, Bulacan, after having been duly sworn in accordance with law, hereby submits the following statement of ownership, management, circulation, etc., which is required by Act 2580, as amended by Commonwealth Act No. 201:

NAME	ADDRESS
Editor: Policarpo A. Feria	P.O. Box 2041, Manila
Owner: FEBC	P.O. Box 2041, Manila
Publisher: FEBC	P.O. Box 2041, Manila
Printer: FEBC	P.O. Box 2041, Manila
Office of Publication:	Radio DZAS, Manila

In case of publication other than daily, total number of copies printed and circulated of the last issue dated September-October, 1963:

1. Sent to paid subscribers	1,200
2. Sent to others than paid subscribers	5,450
Total	6,650

(Sgd.) Policarpo A. Feria  
Editor

SUBSCRIBED AND SWORN to before me this 17th day of October, 1963, at Manila, the affiant exhibiting his Residence Certificate No. A3104018 issued at Valenzuela, Bulacan, on Feb. 21, 1963.

(Sgd.) M. B. Aranda  
Postal Inspector

NOTE: This form is exempt from the payment of documentary stamp tax.

## The SIGNAL

VOLUME V

NOVEMBER-DECEMBER 1963

NUMBER 6

Published and Printed by the FAR EAST BROADCASTING CO., INC.

Editor ..... Fred Feria

**MAILING ADDRESS:**

In the Philippines: Far East Broadcasting Co., Box 2041, Manila

**SUBSCRIPTION RATES:**

One year (Philippines) P0.50 One year (Foreign) \$1.00



# The SIGNAL

P. O. BOX 2041  
MANILA, PHILIPPINES

Re-entered as Second Class Matter at the  
Manila Post Office on August 7, 1962.

ARE YOU TUNED IN TO OUR STATIONS? Here are the frequencies:

<b>Philippines</b>			<b>DZH9</b>	15.300 mc.	19 meter band
			<b>DZF3</b>	15.385 mc.	19 meter band
			<b>DZ16</b>	17.810 mc.	16 meter band
<b>Philippine Service</b>			<b>Okinawa</b>		
<b>DZAS</b>	680 kc.	medium wave	<b>KSAB</b>	1020 kc.	medium wave
<b>DZFE</b>	1030 kc.	medium wave	<b>KSDX</b>	1250 kc.	medium wave
<b>DZB2</b>	3.345 mc.	89 meter band	<b>KSBU</b>	1360 kc.	medium wave
<b>DZH6</b>	6.030 mc.	49 meter band	<b>San Francisco</b>		
<b>Oversent &amp; English Services</b>			<b>KGEI</b>	15.225 mc.	19 meter band
<b>DZ19</b>	7.230 mc.	41 meter band			
<b>DZH7</b>	9.715 mc.	31 meter band			
<b>DZH8</b>	11.850 mc.	25 meter band			
<b>DZF2</b>	11.920 mc.	25 meter band			

WRITE FOR FREE PROGRAM SCHEDULES.

Robert Behm  
1103 Evelyn Ave.  
Andalusia, Pennsylvania  
U. S. A.

11-63



## ENGLISH PROGRAM HIGHLIGHTS

Precious Melody - Sunday - 115 GMT, Wednesday 1545 GMT  
The Melody Men bring you "Words of Life and Hope"  
in music.

You Asked For It - Sunday 0645 GMT  
Your music requests from the extensive music library  
at Manila.

Christ of the Indian Road - Friday 1545 GMT  
Drawing from a lifetime of experience as a spiritual  
counsellor, Dr. E. Stanley Jones speaks to the people  
of India - and other countries of Asia.

Programs for Youth - Daily (Mon. - Sat.) 1315 GMT  
For children from 6 to 66, refer to the main schedule  
for specific daily programs.

This is the Philippines - Tuesday 1530, Thursday 0730 GMT  
To bring you glimpses of the Philippines, her people,  
customs, music, and culture.

---

## HOW TO USE THIS SCHEDULE

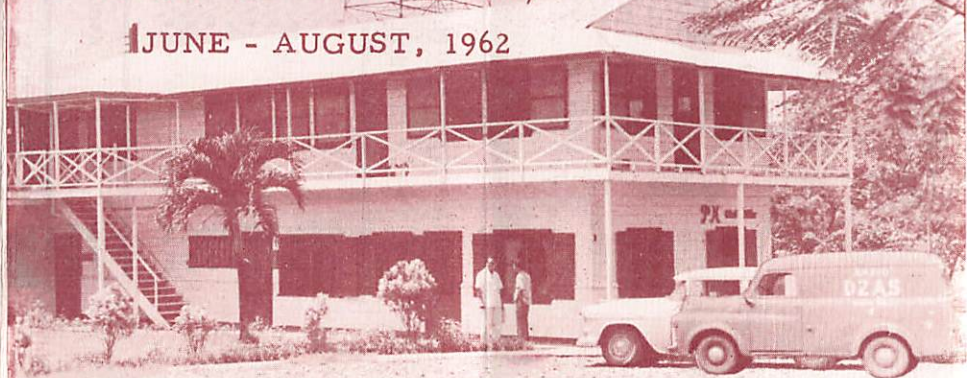
First, from the map, determine the color of beam  
in which your home lies. Then refer to the color chart  
immediately to the right of the time at which you want to  
listen. Your best reception will almost certainly be  
found on the frequency or frequencies which are marked  
with this color, so try listening to these first. This is  
not always true, as sometimes a higher powered station  
beamed in another direction will make better listening  
than a low powered station beamed in your direction.  
There is some overlap between the beams.



# Overseas Program Schedule

Far East Broadcasting Co.

JUNE - AUGUST, 1962

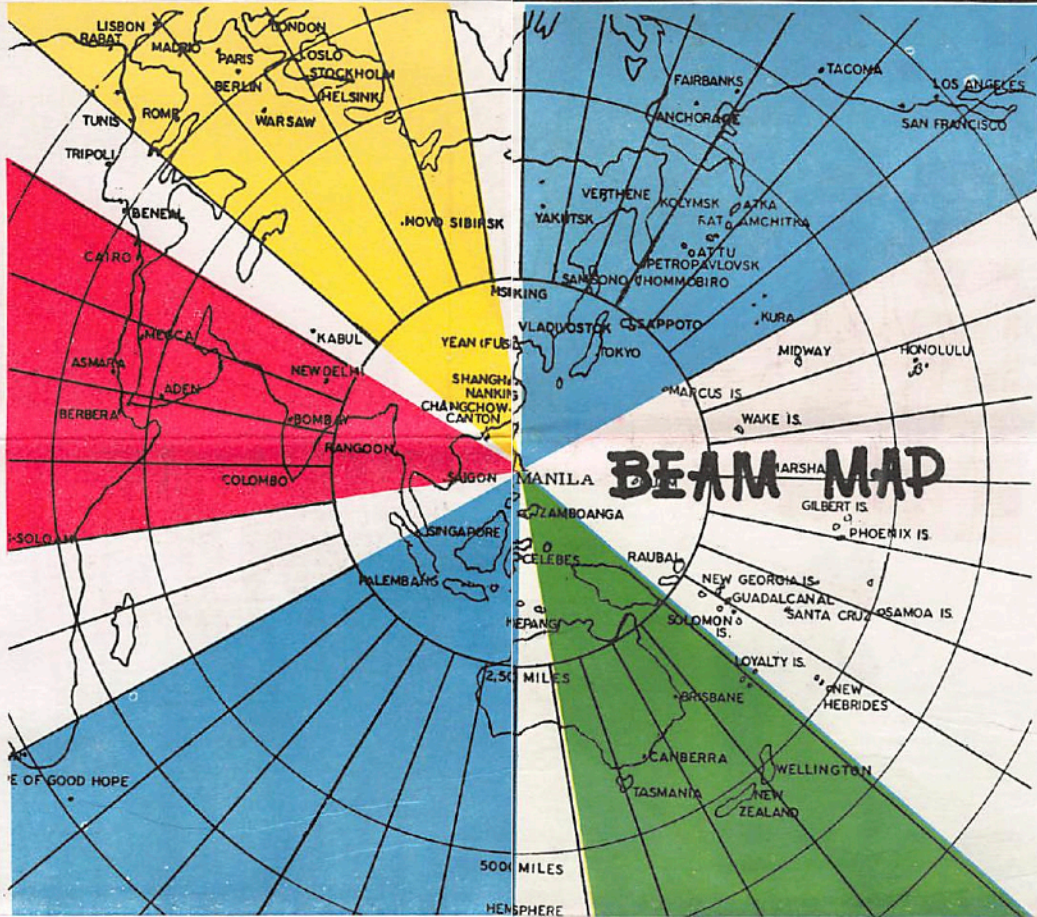


TIME	MEGACYCLES					LOCAL	MANILA	GMT	SUNDAY	MONDAY	TUESDAY	WEDNESDAY	THURSDAY	FRIDAY	SATURDAY
	6.03	7.24	9.73	11.855	15.30										
05:55									Sign On	Sign On	Sign On	Sign On	Sign On	Sign On	Sign On
06:00									Breakfast Concert	Breakfast Concert	Breakfast Concert	Breakfast Concert	Breakfast Concert	Breakfast Concert	Breakfast Concert
07:00									Splendor of Sacred Song	Splendor of Sacred Song	Splendor of Sacred Song	Splendor of Sacred Song	Splendor of Sacred Song	Splendor of Sacred Song	Splendor of Sacred Song
07:30									News	News	News	News	News	News	News
07:45									Quiet Time	Four Cups of Coffee	Four Cups of Coffee	Four Cups of Coffee	Four Cups of Coffee	Four Cups of Coffee	Four Cups of Coffee
08:00									Revival Time	Back to the Bible	Back to the Bible	Back to the Bible	Back to the Bible	Back to the Bible	Old Fashioned Revival Hour
08:30									(End English Transmission - Resume trans. at 01:00 GMT)						
09:00									Musical Interlude	Your Radio Doctor	Adventure!	Jungle Doctor	The Question Box	Colombo Interview	News in Review
09:15									Precious Melody	Bit of Heaven	Bit of Heaven	Bit of Heaven	Bit of Heaven	Bit of Heaven	Bit of Heaven
09:30									Temple Time	Musical Moments	Musical Moments	The Wondrous Story	Musical Moments	Musical Moments	U.N. Speaks
09:45									" "	Word of Faith	Norman Nelson Sings	Prayer time	Norman Nelson Sings	Norman Nelson Sings	Norman Nelson Sings
10:00									News	News	News	News	News	News	News
10:15									Music for Sunday	Interlude	Interlude	Interlude	Interlude	Interlude	Interlude
10:30									Back to God	Voice of Bethel	Hour of Revival	Lutheran Gospel Hour	Revival Time	Rock of Ages	Victory Hour
11:00									(End English Transmission - Monday through Saturday - Resume trans. at 05:30 GMT)						
12:00									(End English Transmission - on Sunday only - Resume trans. at 05:30 GMT)						
13:30									The Pacific Hour	The Pacific Hour	The Pacific Hour	The Pacific Hour	The Pacific Hour	The Pacific Hour	The Pacific Hour
14:30									News	News	News	News	News	News	News
14:45									You Asked For It	Sound of Music	Sound of Music	Sound of Music	Sound of Music	Sound of Music	Sound of Music
15:15									Australia Calling	20 Questions	Brighten Your Way	Redemption Tidings	The Wondrous Story	Brighten Your Way	Miracles
15:30									Unshackled	Today's World	Hello Neighbor - Engand	Hello Neighbor - Australia	This is the Philippines	Peace Corps	Asian Cultural News
15:45									" "	Shortwave Mailbag	Musical Merienda	Musical Merienda	Musical Merienda	Musical Merienda	Musical Merienda
16:00									Light and Life Hour	Bible Adventures	Page Two	The Bible Says	Page Two	Way of Victory	Way of Life
16:15									" "	Bandstand of the Air	Bandstand of the Air	Bandstand of the Air	Bandstand of the Air	Bandstand of the Air	Bandstand of the Air
16:30									Lutheran Hour	Back to the Bible	Back to the Bible	Back to the Bible	Back to the Bible	Back to the Bible	Back to the Bible
17:00									Hour of Decision	Music in the Air	Music in the Air	Music in the Air	Music in the Air	Music in the Air	Music in the Air
17:30									News	News	News	News	News	News	News
17:45									Hymn Histories	Bible School of the Air	Glad Tidings	Bible School of the Air	New Zealand Interlude	Bible School of the Air	Showers of Blessing
18:00									Music of the Masters	Music of the Masters	Music of the Masters	Music of the Masters	Music of the Masters	Music of the Masters	Music of the Masters
18:30									" "	" "	" "	" "	" "	" "	" "
20:00									Splendor of Sacred Song	Splendor of Sacred Song	Splendor of Sacred Song	Splendor of Sacred Song	Splendor of Sacred Song	Splendor of Sacred Song	Splendor of Sacred Song
20:30									Sound Stage	Winnie the Pooh	Ray of Sunlight	FEBC Playhouse	Adventure!	Children's Corner	Ray of Sunlight
20:45									Bible Adventures	Stories of Great Christians	Jungle Doctor	Melodies for Youth	Jungle Doctor	" "	Strange Stories
21:00									Eventide	Old Fashioned Revival Hour	Christian Brotherhood Hour	Hour of Decision	Unshackled	Search the Scriptures	Your Worship Hour
21:15									Way to Life	" "	" "	" "	" "	" "	" "
21:30									(End English Transmission - Resume trans. at 15:00 GMT)						
23:00									News	News	News	News	News	News	News
23:15									Bible Reading	Bible Reading	Bible Reading	Bible Reading	Bible Reading	Bible Reading	Bible Reading
23:18									Living Waters	Good News Magazine	Strange Stories from the Bible	Friend of Truth	Strange Stories from the Bible	Favorite Hymns	Home Bible Class
23:30									Colombo Interview	Shortwave Mailbag	This is the Philippines	Village Doctor	The Question Box	Your Radio Doctor	Home and Happiness
23:45									Introduction to Life	Who Jesus Is	New Zealand Interlude	Precious Melody	Friend of Truth	Christ of the Indian Road	Friend of Truth
24:00									Sunday Meditation	Back to the Bible	Back to the Bible	Back to the Bible	Back to the Bible	Back to the Bible	Back to the Bible
00:30									(End English Transmission - Resume trans. at 21:55 GMT)						

Colored blocks denote direction of transmission ( see beam map) North and South Beams ■ North Beam Only N South Beam Only ■ Northwest Beam ■ West Beam ■ Southeast Beam ■

OVERSEAS LANGUAGE BROADCASTS								
TIME	MEGACYCLES					LOCAL	MANILA	GMT
	6.03	7.24	9.73	11.855	15.30			
05:25								Sign On
05:30								Mandarin
07:00								Cantonese
07:30								English News
07:45								Indonesian
08:00								Thai
08:45								Lao
08:30								Sinhalese
08:45								Burmese/Karen
09:00								Burmese/Karen
09:15								Nepali/Tibet
09:30								Mandarin
10:30								English
11:00								Sign Off
12:00								Vietnamese
12:30								French
12:45								Cambodian
13:15								Cantonese
13:45								Amoy
14:30								English
17:00								Amoy
18:00								Indonesian
18:30								Japanese
20:00								Thai
20:00								Vietnamese
20:30								Lao
20:45								French
21:15								Cambodian
21:45								Mandarin
22:00								Mandarin
22:15								Cantonese
23:15								Mandarin
21:30								Tamil
22:00								Telegu
22:15								Marathi
22:30								Hindustani
23:00								English
24:00								Russian
00:15								Russian
01:30								Sign Off

• Simultaneous broadcast at 08:30, 20:00 and 21:30 daily

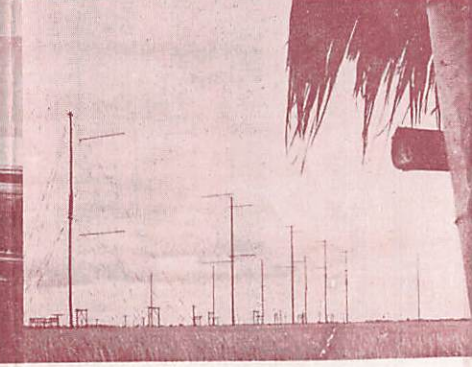
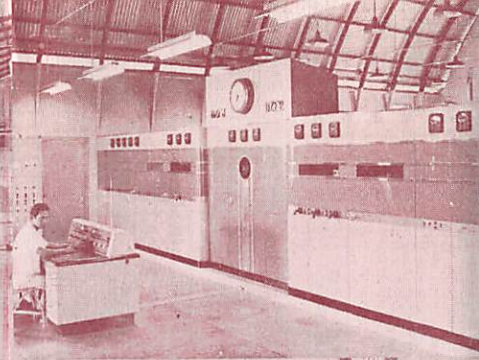
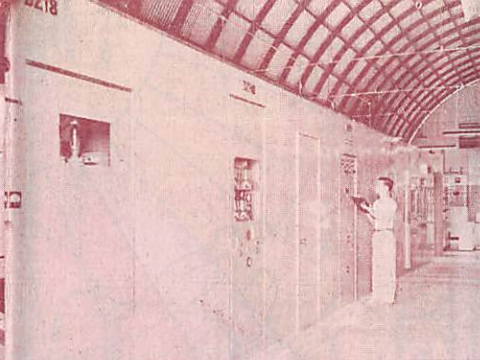


Call Letters	Megacycles	Meter Band
DZH6	6.03 mc/s	49 m
DZI9	7.24 mc/s	41 m
DZH7	9.73 mc/s	31 m
DZH8	11.855 mc/s	25 m
DZF2	11.92 mc/s	25 m
DZH9	15.30 mc/s	19 m
DZF3	15.385 mc/s	19 m
DZI6	17.805 mc/s	16 m
DZI8	21.515 mc/s	13 m

### TIME CALCULATOR

To correlate your local time with Manila Standard Time:

GMT	Subtract	8 hrs.
Bangkok	Subtract	1 hr.
Berlin	Subtract	7 hrs.
Bombay	Subtract	2 hrs. 30 min.
Cairo	Subtract	6 hrs.
Calcutta	Subtract	2 hrs. 30 min.
Chicago	Subtract	14 hrs.
Chungking	Subtract	1 hr.
Delhi	Subtract	2 hrs. 30 min.
Djakarta	Subtract	30 min.
Hongkong	Same as Manila	
Honolulu	Subtract	18 hrs.
Los Angeles	Subtract	16 hrs.
Melbourne	Add	2 hrs.
Moscow	Subtract	5 hrs.
Rangoon	Subtract	1 hr. 30 min.
Shanghai	Same as Manila	
Saigon	Same as Manila	
Singapore	Subtract	30 min.
Tokyo	Add	1 hr.
Vladivostock	Add	2 hrs.
Wellington	Add	4 hrs.



### HINTS FOR GOOD LISTENING:

**WARM-UP:** Most short-wave receivers "drift off" frequency during the first few minutes of operation. It is helpful to turn on your receiver about fifteen minutes before the start of the program you want to hear. This "warms up" your receiver properly -- helps keep it in tune.

**HOW TO LISTEN:** Shortwave stations are more difficult to tune in than the medium wave stations with which most people are more familiar. Tuning must be done very slowly and with precision, since many stations may be crowded into a small section of the dial and the tuning is likely to be quite sharp. Peak the signal for maximum volume and minimum interference by turning the tuning control slightly back and forth.

A good high outside antenna 50-100' long is important, as is also a good ground connection on some receivers.

**WHEN TO LISTEN;** It is important to listen at the right time on the right wave length. Usually good reception is not expected all day on the same frequency -- different frequencies are best for different times of the day. In general the higher frequency bands are best in the daytime and the lower frequencies at night, although this is by no means always true as sometimes the higher frequencies (19, 16 meters) are good until quite late and the lower frequencies (25, 31, 49 meters) are good all day, especially for short distances.

With a little experience and by checking the BEAM MAP on this schedule, it can be learned which of your frequencies serve a particular area at different times of the day. There will be some seasonal variation also.