

Palau on the Air

by Jerry Berg,
jsberg@rcn.com

The World Harvest Radio station on Palau left shortwave on October 27, 2019. The origin of the station was the subject of a recent three-part interview of Paul Hunter, formerly chief engineer with High Adventure Ministries. The interview was conducted by Ray Robinson of KVOH and presented in Wavescan Nos. N560 (November 17, 2019), N562 (December 1, 2019) and N564 (December 15, 2019). The audio of the interview is posted in the [Wavescan](#) section under “Specialized Resources” at ontheshortwaves.com.

Palau is an archipelago state. The modern incarnation of Palau shortwave broadcasting commenced in 1992. It started out as High Adventure Ministries (Voice of Hope) station KHBN, later becoming T8BZ, and still later T8WH. At various times it has carried Radio Free Asia broadcasts, as well as leased time programming, and it is now owned by World Harvest Radio. The station is located on Babeldaob Island (also called Babelthuap), which is the largest island of Palau (the capital is located there).

A little-known fact is that during World War II, Palau, which had been under Japanese control since the end of World War I, some programs of Radio Tokyo were transmitted from Palau. The station, JRAK, appears to have been authorized in 1941 and built a year later. Some sources give the location as Parao, others as Koror. The usually-reported frequencies were 9565 and 11740 kHz. Both carried Home Service programming, and at least 9565 carried an hour-long transmission to eastern North America and Brazil, according to the following schedule which appeared in the July 1944 issue of Radio News (pg. 118).

RADIO TOKYO TRANSMISSION			
BROADCAST SCHEDULE OF RADIO TOKYO BEAMED TO THIS HEMISPHERE. COMPILED THROUGH THE COURTESY OF D. BUCHAN OF THE BBC, NEW YORK OFFICE.			
MEGACYCLES	CALL	TIME (EWT)	BEAMED TO:
9.535	JZI	9:00 a.m.—10:45 a.m. 11:00 a.m.— 2:40 p.m.	E. North America and Brazil W. North America
9.565	JRAK (Palau)	7:00 p.m.— 8:00 p.m.	E. North America and Brazil
11.725	JVW3	7:15 a.m.— 8:15 a.m. 9:00 a.m.—10:45 a.m. 11:00 a.m.— 2:40 p.m.	Latin America E. North America and Brazil W. North America
11.80	JZJ	6:15 p.m.— 8:15 p.m. 8:30 p.m.— 9:30 p.m. 11:00 p.m.— 4:00 a.m.	E. North America and Brazil Latin America W. North America and Latin America
11.897	JVU3	6:15 p.m.— 8:15 p.m. 11:00 p.m.— 4:00 a.m.	E. North America and Brazil W. North America and Latin America
15.160	JZK	6:15 p.m.— 8:15 p.m. 11:00 p.m.— 4:00 a.m.	E. North America W. North America and Latin America
15.225	JLT3	7:15 a.m.— 8:15 a.m. 8:30 p.m.— 9:30 p.m. 11:00 p.m.— 4:00 a.m.	Latin America Latin America W. North America and Latin America
15.325	JLP2	8:30 p.m.— 9:30 p.m.	Latin America

Newscasts from Radio Tokyo are read on the hour, and are followed during all news-periods (mornings and evenings) by messages from American prisoners of war.

These entries are from the NNRC Bulletin, also July 1944.

11,740 JRAK, Parao, Palau Islands, broadcasts with a fine signal at 5:30 A.M. Program is in Japanese. Beginning at 5:55 A.M. a series of chimes is sounded until 6 A.M. when the program is resumed. However, DXC2, same frequency, signs on at 6 A.M. and causes considerable interference with the Jap.

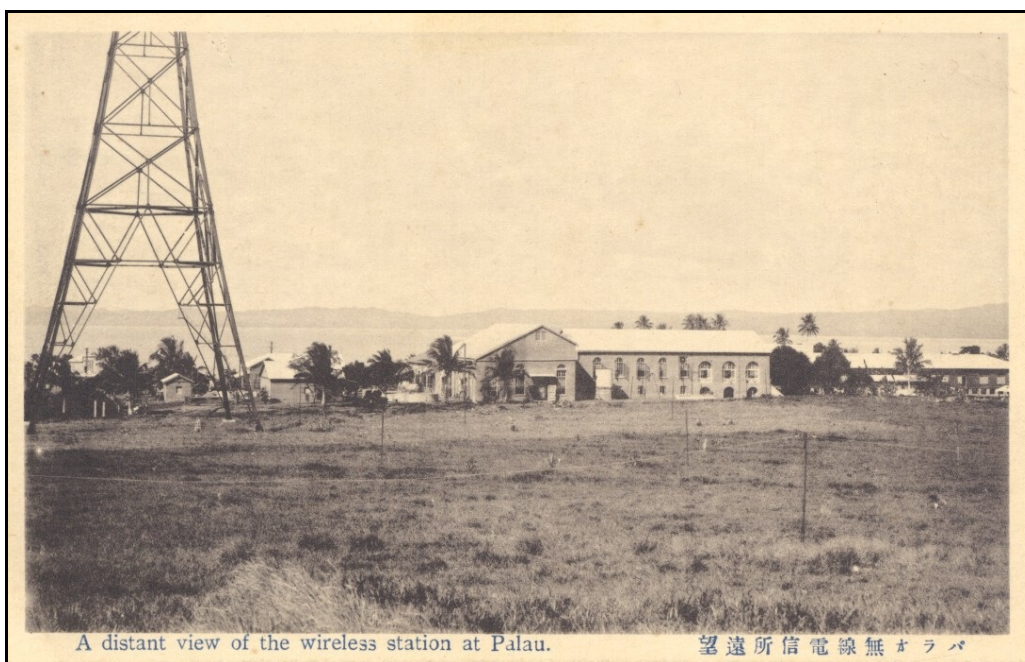
15,225 JLT3, Tokyo, signs on nightly at 11 using this frequency only. JLT3 is also on the air at 6:15 P.M. when it operates in parallel with JZK, 15,160 mcs.; JRAK, 9,565 and JVU3, 11,897 mcs. broadcasting a program for eastern North America.

And here is a listing of the station in the 1944 “Wartime Edition” of the Victory Radio Club’s “DX Almanac.”

9563	HHK	Port au Prince, Haiti. (D. G. des Travaux publics).
9565	JVZ	Tokyo, Japan, 5 to 8 PM.
9565	JRAK	Parao, Palau Group, Caroline Islands, 9:30 AM-12:15 PM (Japanese).
9565	—	Komsomolsk, U. S. S. R., 3-7:30; 8:30-10 AM; 3 PM to 12:30 AM intermitt.
9570	DXZ	Berlin, Germany, 12:15-1:45; 9:45 AM-12:45 PM & 1:30-3 PM.
11740	HVJ	Vatican City, Su., Th., 9:30-9:45 PM to N. A., Tu. 11-11:30 AM.
11740	—	Parao, Palau, Caroline Islands (Japanese), 4:30 PM to 9:30 AM.
11740	JLU-4	Tokyo, Japan, 5-7 AM approx., irregularly.

Adrian Peterson mentions the early Palau station in “Radio Broadcasting on the Island of Palau” in [Wavescan No. 456](#), September 28, 2003. And some pieces of information about radio in Palau were pulled together during wartime in [Palau Islands—Study of the Theater of Operations](#) (Marine Corps School, Marine Barracks, Quantico, Virginia, 1943), pgs. 24-25.

Below is a postcard view of a “wireless station” in Palau. Whether it is the plant that carried Tokyo programming is not known.



A distant view of the wireless station at Palau.

望遠所信電線無オラバ

The Palau island of Peleliu was the site of the famous battle of that name that took place in September-November 1944. It ended with the capture of the islands by the United States.