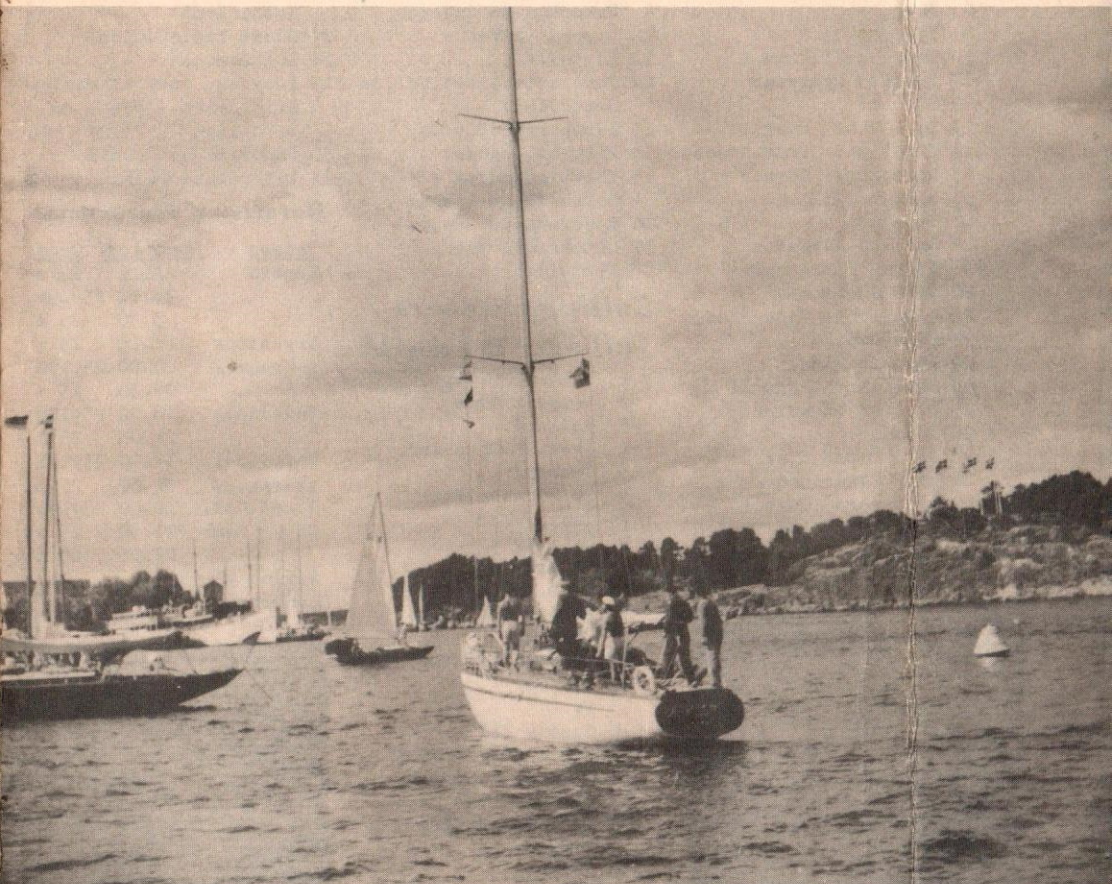




SWEDEN · SCHWEDEN · SUÈDE · SUÉCIA · SUECIA



7

1959

For USA and

CANADA

- 1 Tumba Johanson
- 2 Listeners' Corner
- 3 Arts in Review
- 4 Swedish Magazine
- 5 Concert
- 6 DX - Guest Star
- 7 Highlights from Sweden
- 8 Jazz
- 9 TV
- 10 Swedish Village I
- 11 Swedish Magazine
- 12 Concert
- 13 DX - Guest Star
- 14 Highlights from Sweden
- 15 Listeners' Corner
- 16 Gustav III
- 17 Special
- 18 Swedish Magazine
- 19 At the Opera House
- 20 DX - Guest Star
- 21 Highlights from Sweden
- 22 Folk Music
- 23 Woman's Side
- 24 Swedish Village II
- 25 Swedish Magazine
- 26 Concert
- 27 DX - Guest Star
- 28 Swed. American
- 29 Listeners' Corner
- 30 Special
- 31 Special

HABLA ESTOCOLMO

- 1 Política de Suecia +
Notas de mi carnet
- 2 Panorama de Suecia
- 3 Literatura Sueca
- 4 Tertulia
- 5 Club Caris
- 6 Buzón radiofónico
- 7 Los Lapones
- 8 Política de Suecia +
Notas de mi carnet
- 9 Panorama de Suecia
- 10 Leyenda Sueca
- 11 Tertulia
- 12 Concierto (Festival de
Estocolmo)
- 13 Buzón radiofónico
- 14 Figuras suecas
- 15 Política sueca +
Notas de mi carnet
- 16 Panorama de Suecia
- 17 Literatura sueca
- 18 Tertulia

- 19 Concierto (Festival de
Estocolmo)
- 20 Buzón radiofónico
- 21 La Medicina en Suecia
- 22 Política sueca +
Notas de mi carnet
- 23 Panorama de Suecia
- 24 Hemos leído ...
- 25 Tertulia
- 26 Concierto (Festival de
Estocolmo)
- 27 Buzón radiofónico
- 28 Los Lapones
- 29 Programa para el radio-
aficionado + Notas de
mi carnet
- 30 Panorama de Suecia
- 31 Literatura Sueca

Horario y frecuencias

<u>Países</u>	<u>Hora loc.</u>	<u>Onda</u>
España	22.15	25 m
	24.00	25y19m
	3.30	25 m
Argentina y Uruguay	18.15	25 m
	20.00	25y19m
Venezuela	23.30	25 m
	18.30	25y19m
Chile, Bol. y Paraguay	22.00	25 m
	19.00	25y19m
Ecuad. Col.	22.30	25 m
Cuba y Perú	18.00	25y19m
	21.30	25 m
México y Centroam.	23.00	25 m
	22.00	25 m

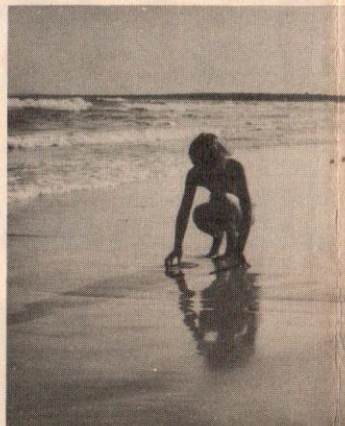
Calling listeners

all over the world

- 1 Tumba Johanson
- 2 Woman's Side
- 3 Gotland
- 4 Swedish Magazine
- 5 Concert
- 6 DX - Guest Star
- 7 Jazz
- 8 Mailbag
- 9 Bofors
- 10 Arts in Review
- 11 Swedish Magazine
- 12 Concert
- 13 DX - Guest Star
- 14 Special
- 15 TV
- 16 Gustav III
- 17 Swedish Village I
- 18 Swedish Magazine
- 19 Mr. and Mrs. Sweden
- 20 DX - Guest Star
- 21 Folk Music
- 22 Mailbag
- 23 Highlights
- 24 Youth Speaks
- 25 Swedish Magazine
- 26 Concert
- 27 DX - Guest Star
- 28 Swed. American
- 29 Woman's Side
- 30 Göta Canal
- 31 Swedish Village II



Summer in town



... and by the sea.

FÖR SVENSKA LYSSNARE

- 1 Sjöfartsnytt fr. Gbg + Ängf.AB. Trelleborg
- 2 Hört var det här
- 3 Om tidningen Sjömannen + Liten konsert
- 4 Backspegeln + Gammaldans
- 5 100-årsminnet av Heidenstams födelse + Andakt
- 6 Idrott + Missionärsprg
- 7 Kungälv 1.000 år
- 8 Kring frysfartyg + Linjen Trelleborg-Sassnitz 50 år
- 9 Hört var det här
- 10 Min sista resa. En sjökaptan berättar + Sommarschlagers
- 11 Backspegeln + Gammaldans
- 12 Riket runt + F.N.Piraten berättar
- 13 Idrott + Missionärsprg
- 14 Semester i Sverige
- 15 För sjöfolk: Sjöfartsnytt Önskeprg.t.visst fartyg
- 16 Hört var det här
- 17 Sommarteater landet runt
- 18 Backspegeln + Gammaldans
- 19 Nytt på grf + Andakt
- 20 Idrott + Missionärsprg
- 21 Minns Ni melodien?
- 22 Sjöfartsnytt + Sjöfolks-idrott
- 23 Hört var det här

- 24 Sendhamnsregattan
- 25 Backspegeln + Gammaldans
- 26 Riket runt + Svenska klassiker
- 27 Idrott + Missionärsprg
- 28 Hemma efter många år. Utlandssvenskar berättar
- 29 För sjöfolk: Tekn. nytt + Önskeprg f.visst fart.
- 30 Hört var det här
- 31 Sjöfartsprognos + Musik + Stordocka på Eriksberg

HIER SPRICHT STOCKHOLM

- 1 Volksmusik + DX
- 2 Aktuelle Sendung (Storlien-Trondheim)
- 3 Jazz
- 4 Gesehen, gelesen, gehört
- 5 Konzert
- 6 "Utvantrarna"
- 7 Sommerliches Programm
- 8 Hörerbriefe + DX
- 9 Aktuelle Sendung (Trelleborg)
- 10 Gespräch mit Dr. Bassmann
- 11 Gesehen, gelesen, gehört
- 12 Konzert
- 13 "Utvantrarna"

- 14 Sommerliches Programm
- 15 Unterhaltungsmusik + DX
- 16 Aktuelle Sendung
- 17 Dahms Special
- 18 Gesehen, gelesen, gehört
- 19 Wunschkonzert
- 20 "Utvantrarna"
- 21 Sommerliches Programm
- 22 Hörerbriefe + DX
- 23 Aktuelle Sendung
- 24 Frauensendung
- 25 Gesehen, gelesen, gehört
- 26 Sigfrid Siewertz
- 27 "Utvantrarna"
- 28 Sommerliches Programm
- 29 Volksmusik + DX
- 30 Aktuelle Sendung
- 31 Jazz

Horário e frequências

Os programas em português podem ser escutados diariamente às:

22.00, 23.45 e 01.45, T. M.C. nos 25,63 metros ou 11.705 Kc.

19.00, 20.45 e 22.45, H. do Rio, na mesma onda e. frequência.

As emissões das 23.45 T. M.C. e 20.45 H.R. são emitidas também em 19.69 metros ou 15.240 Kc.

Times and frequencies for programmes in English, German, French and Swedish

ENGLISH: (times in GMT)

- 12.30-20.15 to the Far East 16.82 and 19.69 m
 14.45-15.15 " South Asia 16.82 and 19.69 m
 16.15-16.45 " the Middle East 19.69 and 25.63 m
 17.45-18.15 " Africa 19.69 m
 19.45-20.15 " Africa 25.63 m
 20.30-21.00 " Europe 41.61 m
 Midnight " Europe 254.7 m

AMERICAN PROGRAMS: 16.82 and 25.40 m

- 19.15 PST (03.15 GMT) W.N.America
 09.00 EST (14.00 GMT) E.N.America
 20.45 EST (01.45 GMT) E.N.America

GERMAN:

- 22.30 CET (21.30 GMT) Europe 49.46 m
 00.00 CET (23.00 GMT) Europe 254.7 m

FRENCH:

- 19.15 GMT to Africa 25.63 m
 23.00 CET (22.00 GMT) Europe 49.46 m
 00.30 CET (23.30 GMT) Europe 254.7 m

SWEDISH: (times in GMT)

- 13.00 to the Far East 16.82 & 19.69
 15.15 " South Asia -" -"
 16.45 " Middle East 25.63 & -"
 18.15 " Africa 19.69 m
 01.00 " South America 25.63 m
 01.00 " E.North America 25.40 m
 02.30 " W.North America 25.40 m

The frequencies corresponding to the wavelengths are:	16.82 m = 17840 kc/sec.
	19.69 " = 15240 "
	25.40 " = 11810 "
	25.63 " = 11705 "
	31.19 " = 9620 "
	41.61 " = 7210 "
	49.46 " = 6065 "
	254.7 " = 1178 "

This booklet is edited by the International Service of RADIO SWEDEN

Ansv.utg: Roland Pålsson. Red: Gunilla Arnö

SINTONISAM

ESTOCOLMO. . .

- 1 Caixa Postal
- 2 Imagens da vida sueca
- 3 Teatro dos Deuses
- 4 Rapsódia Sueca
- 5 Caixa Postal Musical
- 6 A Personalidade do Mês
- 7 Página Musical
- 8 Caixa Postal
- 9 Imagens da vida sueca
- 10 Teatro dos Deuses
- 11 Rapsódia Sueca
- 12 Caixa Postal Musical
- 13 Lar doce lar
- 14 Página Musical
- 15 Caixa Postal
- 16 Imagens da vida sueca
- 17 Teatro dos Deuses
- 18 Rapsódia Sueca
- 19 Caixa Postal Musical
- 20 Lar doce lar
- 21 Página Musical
- 22 Caixa Postal
- 23 Imagens da vida sueca
- 24 Teatro dos Deuses
- 25 Rapsódia Sueca
- 26 Caixa Postal Musical
- 27 Lar doce lar
- 28 Página Musical
- 29 Caixa Postal
- 30 Imagens da vida sueca
- 31 Teatro dos Deuses



EMISSIONS EN FRANÇAIS

Smögen, a fishing village on Sweden's west coast.

- | | | |
|---|---|--|
| 1 Suède 59 | 14 Théâtre des Dieux 13 | |
| 2 Concert du Festival de Stockholm | 15 Suède 59 | 26 Stockholm-Magazine spécial. Enquête 4 |
| 3 A bâtons rompus | 16 Le quart d'heure littéraire. Musique électronique Aniara | 27 Dix minutes avec Quintett Allan Eriksson + DX |
| 4 Radio-dancing | 17 Pour vous Mesdames | 28 Théâtre des Dieux 15 |
| 5 Stockholm-Magazine spécial. Enquête 1 | 18 Radio-dancing | 29 Suède 59 |
| 6 Dix minutes avec Zarah Leander + DX | 19 Stockholm-Magazine spécial. Enquête 3 | 30 Concert du Festival de Stockholm |
| 7 Théâtre des Dieux 12 | 20 Dix minutes avec Lilly Berglund + DX | 31 Programme spécial |
| 8 Suède 59 | 21 Théâtre des Dieux 14 | |
| 9 Concert du Festival de Stockholm Aniara | 22 Suède 59 | |
| 10 Itinéraire suédois | 23 Concert du Festival de Stockholm | |
| 11 Estrade 15 | 24 Itinéraire suédois, côte ouest | |
| 12 Stockholm-Magazine spécial. Enquête 2 | 25 Estrade 16 | |
| 13 Dix minutes avec Gunnar Hahn + DX | | |

COVER: Sweden's largest yacht regatta takes place every year at Sandhamn in the Stockholm archipelago.